

Guide to the Application (Updated)

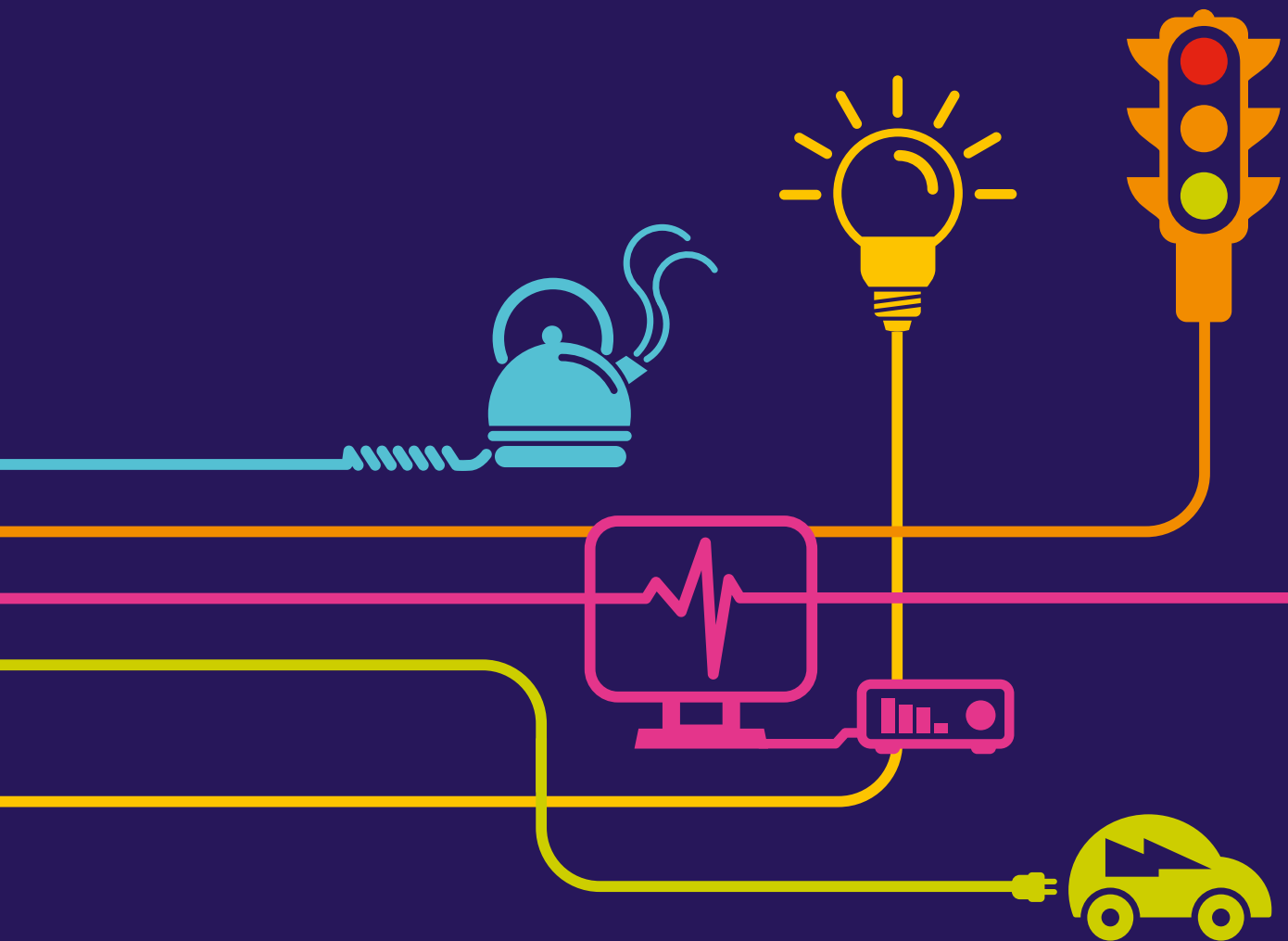
National Grid (Richborough Connection Project) Order

Regulation 5(2)(q) of the

Infrastructure Planning (Applications: Prescribed Forms and Procedure)

Regulations 2009 and

TEN-E Regulation EU347/2013



Richborough Connection Project

Volume 1

1.4(D) Guide to the Application

National Grid
National Grid House
Warwick Technology Park
Gallows Hill
Warwick
CV34 6DA

Final

August 2016

Document Control			
Document Properties			
Organisation	National Grid		
Author	Ken Guest		
Approved by	Steve Self		
Title	Guide to the Application		
Document Reference	1.4(D)		
Version History			
Date	Version	Status	Description/Changes
04/01/2016	1	Final	1 st Issue
07/04/2016	A	Final	Update due to document updates.
21/06/2016	B	Final	Update following submissions for deadline 1
14/07/2016	C	Final	Update following submissions for deadline 2
04/08/2016	D	Final	Update following submissions for deadline 3

Introduction

This document provides a guide to National Grid's Richborough Connection Project Development Consent Order application. The original application was submitted to the Planning Inspectorate on 14 January 2016, and accepted for examination by the Examining Authority on 11 February 2016.

Since submission a number of the original application documents have been revised and new documents produced. This guide charts the submission of these documents to the Planning Inspectorate.

This is a live document and will be updated throughout the examination period and submitted, when updated, for each deadline.

Master Document List

The master document list table commences on page 2 and provides a full list of all the documents submitted to date. indicating either the latest revision (if applicable) or when a new document was submitted.

For ease of navigation these documents are grouped by volumes as follows (note the colours continue throughout on the document covers):

Volume	This volume...
1. Application Information	provides details of the specific application information required by the Planning Inspectorate
2. Draft Development Consent Order	outlines the legal powers we are seeking from the Government to build the proposed connection
3. Compulsory Acquisition Information	provides evidence of why we may require legal powers of compulsory acquisition
4. Plans and Drawings	contains the plans which show where we propose to undertake the work
5. Environmental Information	shows how we assessed the potential impact on the environment
6. Consultation Report	provides details of the pre-application consultation that we have undertaken on the project
7. Other Documents	includes additional documents produced for the application submission
8. Examination Submissions	is for new documents submitted to the Planning Inspectorate

Highlighted documents are the latest versions

Master Document List - Submissions Made to the Planning Inspectorate

Document	Version	Submission Date	Document Title
Volume 1 Application Information			
1.1	Latest	14 January 2016	Navigation Document
1.2	Latest	14 January 2016	Application Letter
1.3	Latest	14 January 2016	Application Form
1.4	Superseded	14 January 2016	Guide to the Application
1.4 (A)	Superseded	18 April 2016	Guide to the Application
1.4 (B)	Superseded	21 June 2016	Guide to the Application
1.4 (C)	Superseded	14 July 2016	Guide to the Application
1.4 (D)	Latest	04 August 2016	Guide to the Application
1.5	Latest	14 January 2016	Glossary
Volume 2 Draft Development Consent Order			
2.1	Superseded	14 January 2016	Draft Development Consent Order
2.1 (A)	Latest	14 July 2016	Draft Development Consent Order
2.2	Latest	14 January 2016	Explanatory Memorandum
Volume 3 Compulsory Acquisition Information			
3.1	Latest	14 January 2016	Statement of Reasons
3.2	Latest	14 January 2016	Funding Statement
3.3 (Part 1 of 3)	Latest	14 January 2016	Book of Reference (Part 1 of 3)
3.3 (Part 2 of 3)	Latest	14 January 2016	Book of Reference (Part 2 of 3)
3.3 (Part 3 of 3)	Latest	14 January 2016	Book of Reference (Part 3 of 3)
3.4	Latest	18 April 2016	Schedule of Variation to the Book of Reference (Document 3.3)
Volume 4 Plans and Drawings			
4.1	Latest	14 January 2016	Location Plan
4.2	Latest	14 January 2016	Land Affected Plans
4.3	Latest	14 January 2016	Land Plans
4.3.1	Latest	18 April 2016	Land Plans (Updates to Sheets 11, 11D and 13)
4.4	Latest	14 January 2016	Extinguishment of Easements, Servitudes and Other Private Rights Plans
4.5	Latest	14 January 2016	Special Category Land Plans and Crown Land Plans
4.6	Latest	14 January 2016	Works Plans
4.7	Latest	14 January 2016	Access, Rights of Way and Public Rights of Navigation Plans
4.8	Latest	14 January 2016	Traffic Regulation Order Plans
4.9	Latest	14 January 2016	Environmental Features – Statutory or Non-Statutory Sites or Features of Nature Conservation
4.10	Latest	14 January 2016	Habitats of Protected Species, Important Habitats or Other Diversity Features and Waterbodies in a River Basin Management Plan - Plans
4.11	Latest	14 January 2016	CONFIDENTIAL: Habitats of Protected Species: Location of Badger Setts Plans
4.12	Latest	14 January 2016	Heritage Designation Plans
4.13	Latest	14 January 2016	Trees and Hedgerows to be Removed or Managed Plans
4.14	Latest	14 January 2016	Design Drawings
4.15	Superseded	14 January 2016	Typical Construction Details
4.15 (A)	Latest	04 August 2016	Typical Construction Details
Volume 5 Environmental Information			
5.1	Latest	14 January 2016	Environmental Statement - Non Technical Summary
5.2 (Part 1 of 2)	Latest	14 January 2016	Environmental Statement - Chapters 1 - 10 (Part 1 of 2)
5.2 (Part 2 of 2)	Latest	14 January 2016	Environmental Statement - Chapters 11 - 16 (Part 2 of 2)
5.2.1	Latest	14 July 2016	Environmental Statement Consolidated Errata and Changes
5.3	Latest	14 January 2016	Environmental Statement - Figures
5.3.1	Latest	14 January 2016	Environmental Statement - Chapter 1 Figures
5.3.2	Latest	14 January 2016	Environmental Statement - Chapter 2 Figures
5.3.3	Latest	14 January 2016	Environmental Statement - Chapter 3 Figures
5.3.4	Latest	14 January 2016	Environmental Statement - Chapter 4 Figures (NO FIGURES)
5.3.5	Latest	14 January 2016	Environmental Statement - Chapter 5 Figures
5.3.6	Latest	14 January 2016	Environmental Statement - Chapter 6 Figures
5.3.7	Latest	14 January 2016	Environmental Statement - Chapter 7 Figures
5.3.7 (1 of 7)	Latest	14 January 2016	Environmental Statement Figures 7.1 to 7.7
5.3.7 (2 of 7)	Latest	14 January 2016	Environmental Statement Figure 7.8 - Photomontage viewpoint location plan
5.3.7 (3 of 7)	Latest	14 January 2016	Environmental Statement Figure 7.9.1-7.9.10 - A3 Verified photomontages Section A
5.3.7 (4 of 7)	Latest	14 January 2016	Environmental Statement Figure 7.9.11-7.9.18 - A3 Verified photomontages Section B
5.3.7 (5 of 7)	Latest	14 January 2016	Environmental Statement Figure 7.9.19 – 7.9.25 - A3 Verified photomontages Section C
5.3.7 (6 of 7)	Latest	14 January 2016	Environmental Statement Figure 7.9.26 – 7.9.32 - A3 Verified photomontages Section D
5.3.7 (7 of 7)	Latest	14 January 2016	Environmental Statement Figures 7.10 to 7.15
5.3.8	Latest	14 January 2016	Environmental Statement - Chapter 8 Figures
5.3.9	Latest	14 January 2016	Environmental Statement - Chapter 9 Figures
5.3.10	Latest	14 January 2016	Environmental Statement - Chapter 10 Figures
5.3.11	Latest	14 January 2016	Environmental Statement - Chapter 11 Figures
5.3.12	Latest	14 January 2016	Environmental Statement - Chapter 12 Figures
5.3.13	Latest	14 January 2016	Environmental Statement - Chapter 13 Figures
5.3.14	Latest	14 January 2016	Environmental Statement - Chapter 14 Figures
5.3.15	Latest	14 January 2016	Environmental Statement - Chapter 15 Figures
5.3.16	Latest	14 January 2016	Environmental Statement - Chapter 16 Figures (NO FIGURES)
5.4	Latest	14 January 2016	Environmental Statement - Appendices
5.4.1A	Latest	14 January 2016	PINS Scoping Opinion (September 2014)
5.4.1B	Latest	14 January 2016	Response to PINS Scoping Opinion
5.4.2A	Latest	14 January 2016	Overview of Technology Options
5.4.2B	Latest	14 January 2016	Figure Showing North and South Route Corridor Options
5.4.2C	Latest	14 January 2016	Figure Showing North Corridor Sub-options
5.4.2D	Latest	14 January 2016	Proposed South East Water Reservoir - Route Options Appraisal
5.4.3A	Latest	14 January 2016	Pylon Information
5.4.3B	Superseded	14 January 2016	Embedded Environmental Measures Schedule (Confidential Information Removed)
5.4.3B (A)	Latest	14 July 2016	Embedded Environmental Measures Schedule (Confidential Information Removed)
5.4.3C	Superseded	14 January 2016	Construction Environmental Management Plan

Document	Version	Submission Date	Document Title
5.4.3C (A)	Latest	14 July 2016	Construction Environmental Management Plan
5.4.3D	Latest	14 January 2016	Outline Waste Management Plan
5.4.3E	Superseded	14 January 2016	Biodiversity Mitigation Strategy (Confidential Information Removed)
5.4.3E (A)	Latest	04 August 2016	Biodiversity Mitigation Strategy (Confidential Information Removed)
5.4.3F	Superseded	14 January 2016	Archaeological Mitigation Written Scheme of Investigation
5.4.3F (A)	Latest	14 July 2016	Archaeological Mitigation Written Scheme of Investigation
5.4.3G	Superseded	14 January 2016	Construction Traffic Management Plan
5.4.3G (A)	Latest	04 August 2016	Construction Traffic Management Plan
5.4.3H	Superseded	14 January 2016	Public Rights of Way Management Plan
5.4.3H (A)	Latest	04 August 2016	Public Rights of Way Management Plan
5.4.3I	Latest	14 January 2016	Arboricultural Impact Assessment
5.4.3I.1	Latest	14 July 2016	Arboricultural Impact Assessment Addendum
5.4.3J	Superseded	14 January 2016	Indicative Construction Programme
5.4.3J (A)	Latest	14 July 2016	Indicative Construction Programme
5.4.4	Latest	14 January 2016	(NO APPENDICES)
5.4.5A	Latest	14 January 2016	Certificate of Conformity
5.4.6A	Latest	14 January 2016	Landscape Methodology
5.4.6B	Latest	14 January 2016	Published Landscape Character Assessment Extracts
5.4.6C	Latest	14 January 2016	Landscape Character Field Survey Sheet
5.4.6D	Latest	14 January 2016	NBS Landscape Specification for Planting
5.4.7A (A)	Latest	14 January 2016	Visual Methodology
5.4.7B	Latest	14 January 2016	Holford Rules and Visual Amenity Principles
5.4.7C	Superseded	14 January 2016	Visual Impact Assessment Tables
5.4.7C (A)	Latest	14 July 2016	Visual Impact Assessment Tables
5.4.7D	Latest	14 January 2016	Method for the production of Verified Photomontages
5.4.8A	Latest	14 January 2016	Archaeological Desk-based Assessment
5.4.8B	Latest	14 January 2016	Gazetteer of Heritage Assets
5.4.8C	Latest	14 January 2016	Results of Step 1 Appraisal of Change to Setting
5.4.8D	Latest	14 January 2016	Summary Assessment of Direct Effects on Non-designated Heritage Assets
5.4.9A	Latest	14 January 2016	Evaluation of Receptors
5.4.9B	Latest	14 January 2016	Environmental Changes and Zones of Influence
5.4.9C	Latest	14 January 2016	Justification for Defining Zones of Influence
5.4.9D	Latest	14 January 2016	Glossary of Scientific Names
5.4.9E	Latest	14 January 2016	Extended Phase 1 Habitat Survey Report
5.4.9F	Latest	14 January 2016	Bat Survey Report
5.4.9G	Latest	14 January 2016	CONFIDENTIAL: Badger Survey Report
5.4.9H	Latest	14 January 2016	Dormice Survey Report
5.4.9I	Latest	14 January 2016	Great Crested Newt Survey Report
5.4.9J	Latest	14 January 2016	Hedgerow Survey Report
5.4.9K	Latest	14 January 2016	Invertebrate Survey Report
5.4.9L	Latest	14 January 2016	Reptile Survey Report
5.4.9M	Latest	14 January 2016	Water Vole and Otter Survey Report
5.4.9N	Latest	14 January 2016	Breeding Bird Survey Report
5.4.9O(i)	Latest	14 January 2016	Non-Breeding Bird Survey Report 2012-2014
5.4.9O(ii)	Latest	14 January 2016	Non-Breeding Bird Survey Report 2014-2015
5.4.9P	Latest	14 January 2016	Bird Collision Risk/Bird Flight Assessment
5.4.9Q	Latest	14 January 2016	CONFIDENTIAL: Ornithology - Schedule 1 Bird Report
5.4.10A	Superseded	14 January 2016	Transport Assessment
5.4.10A (A)	Latest	04 August 2016	Transport Assessment
5.4.11A	Latest	14 January 2016	Construction Noise Calculations
5.4.11B	Latest	14 January 2016	Night-time Background Noise Measurements
5.4.11C	Latest	14 January 2016	Operational Noise Assessment
5.4.11D	Latest	14 January 2016	Meteorological Office Average Rainfall Charts
5.4.11E	Latest	14 January 2016	Overhead Line Noise Modelling
5.4.12A	Latest	14 January 2016	Dust Risk Assessment
5.4.13A	Latest	14 January 2016	Flood Risk Assessment
5.4.13B	Latest	14 January 2016	Supporting Water Quality Baseline Information
5.4.14A	Superseded	14 January 2016	Land Contamination Desk Study
5.4.14A (A)	Latest	14 July 2016	Land Contamination Desk Study
5.4.14B	Latest	14 January 2016	Mineral Planning Report
5.4.14C	Latest	14 January 2016	Soil Associations and Agricultural Land Classification
5.4.14D	Latest	14 January 2016	Natural Geohazards
5.4.15A	Latest	14 January 2016	Socio-economic Assessment Tables
5.4.16	Latest	14 January 2016	(NO APPENDICES)
5.5 (Part 1 of 2)	Latest	14 January 2016	No Significant Effects Report (Habitat Regulations Assessment Screening)
5.5 (Part 2 of 2)	Latest	14 January 2016	No Significant Effects Report (Habitat Regulations Assessment Screening)
5.5.1	Latest	21 June 2016	Applicant's updated HRA matrices to inform the Report on the Implications for European Sites (RIES)
5.6	Latest	14 January 2016	Statement of Statutory Nuisance
5.7	Latest	14 January 2016	Electric and Magnetic Fields Report
5.8	Latest	14 January 2016	Landscape and Habitat Enhancement Scheme
Volume 6 Consultation Report			
6.1	Latest	14 January 2016	Consultation Report
6.2 (Part 1 of 2)	Latest	14 January 2016	Consultation Report Appendices 1 - 22
6.2 (Part 2 of 2)	Latest	14 January 2016	Consultation Report Appendices 23 - 40
Volume 7 Other Reports			
7.1	Latest	14 January 2016	Planning Statement
7.2	Superseded	14 January 2016	Details of other Consents and Licences
7.2 (A)	Latest	14 July 2016	Details of other Consents and Licences
7.3	Latest	14 January 2016	Need Case
7.4	Latest	14 January 2016	Strategic Options Report
7.5	Latest	14 January 2016	Route Corridor Study
7.6	Latest	14 January 2016	Preferred Connection Option and Route Corridor Report

Document	Version	Submission Date	Document Title
7.7	Latest	14 January 2016	Connections Options Report
7.8	Latest	14 January 2016	Pylon Design Options Report
Volume 8 Examination Submissions			
8.1	Latest	21 June 2016	Applicant's Proposed Site Inspection Document
8.2	Latest	14 July 2016	National Grid's Responses to the Examining Authority's 1st Round of Written Questions (Deadline 2)
8.2.1	Latest	14 July 2016	Response to Examining Authority's First Written Questions Appendices (A to S)
8.3	Latest	14 July 2016	Schedule under section 135 of the Planning Act 2008 in respect of Crown Land
8.4	Superseded	14 July 2016	Commonality on specific points between Statements of Common Ground
8.4 (A)	Latest	04 August 2016	Commonality on specific points between Statements of Common Ground
8.4.1	Superseded	14 July 2016	Statements of Common Ground Environment Agency
8.4.1 (A)	Latest	04 August 2016	Statements of Common Ground Environment Agency
8.4.2	Superseded	14 July 2016	Statements of Common Ground Internal Drainage Board
8.4.2 (A)	Latest	04 August 2016	Statements of Common Ground Internal Drainage Board
8.4.3	Latest	14 July 2016	Statements of Common Ground Natural England
8.4.4	Latest	14 July 2016	Statements of Common Ground Kent Wildlife Trust
8.4.5	Latest	14 July 2016	Statements of Common Ground Kent County Council (Highways /ProW)
8.4.6	Latest	14 July 2016	Statements of Common Ground Joint Councils
8.4.7	Latest	14 July 2016	Statements of Common Ground Historic England
8.4.8	Latest	14 July 2016	Statements of Common Ground Kent Downs AONB
8.4.9	Latest	14 July 2016	Statements of Common Ground Marine Management Organisation
8.4.10	Latest	04 August 2016	Statements of Common Ground Network Rail
8.4.11	Latest	14 July 2016	Statements of Common Ground South East Water
8.4.12	Latest	14 July 2016	Statements of Common Ground Southern Water
8.4.13	Latest	14 July 2016	Statements of Common Ground Southern Gas Networks
8.4.14	Latest	14 July 2016	Statements of Common Ground UK Power Networks
8.5.1	Latest	14 July 2016	Applications under section 127 and 138 of the Planning Act 2008 South East Water
8.5.2	Latest	14 July 2016	Applications under section 127 and 138 of the Planning Act 2008 Southern Water Services Ltd
8.5.3	Latest	14 July 2016	Applications under section 127 and 138 of the Planning Act 2008 Southern Gas Networks Plc
8.5.4	Latest	14 July 2016	Applications under section 127 and 138 of the Planning Act 2008 Environment Agency
8.5.5	Latest	14 July 2016	Applications under section 127 and 138 of the Planning Act 2008 Network Rail
8.6.1	Latest	14 July 2016	Application under section 138 of the Planning Act British Gas
8.6.2	Latest	14 July 2016	Application under section 138 of the Planning Act South Eastern Power Networks Plc
8.6.3	Latest	14 July 2016	Application under section 138 of the Planning Act British Telecommunications
8.6.4	Latest	14 July 2016	Application under section 138 of the Planning Act Level 3
8.6.5	Latest	14 July 2016	Application under section 138 of the Planning Act Vodafone
8.6.6	Latest	14 July 2016	Application under section 138 of the Planning Act Virgin Media Ltd
8.7.1	Latest	14 July 2016	Application under section 132 of the Planning Act 2008 in respect of Special Category Land
8.8	Latest	14 July 2016	Noise and Vibration Management Plan
8.9 (Part 1 of 2)	Latest	14 July 2016	Additional Photomontages and Other Supporting Information - Items 1 and 2
8.9 (Part 2 of 2)	Latest	14 July 2016	Additional Photomontages and Other Supporting Information - Items 3 and 4
8.10	Latest	15 July 2016	National Grid's Guidelines for Pollution Prevention
8.11	Latest	16 July 2016	Concept Mitigation Planting Plan
8.12	Latest	17 July 2016	Proposed Access Routes for Construction, Dismantling and Maintenance
8.13	Latest	04 August 2016	Applicants Comments on the Written Representations Submitted for Deadline 2
8.14	Latest	04 August 2016	Applicant's comments on the Joint Local Impact Report and the Councils Written Representations
8.15	Latest	04 August 2016	Applicant's Comments on Third Party Responses to Examining Authority's First Written Questions Submitted for Deadline 2
8.16	Latest	04 August 2016	Applicant's Written Summary of Case put forward orally at the Issue Specific Hearing on the Development Consent Order held on 28th July 2016
8.17	Latest	04 August 2016	Applicant's Written Summary of Case put forward orally at the Issue Specific Hearing on the effect of the Broad Oak reservoir proposal on the Application held on 29th July 2016
8.18	Latest	04 August 2016	Expert Witness Biographies for the Issue Specific Hearings held on 28 and 29 July 2016
8.19	Latest	04 August 2016	Applicant's Response to South East Water Written Representation submitted for Deadline 2
8.20	Latest	04 August 2016	Additional Verified Photomontage VP48 and Viewpoint Location Plan
8.21	Latest	04 August 2016	Detailed Accompanied Site Inspection Plans used on the 25th and 26th July 2016
8.22	Latest	04 August 2016	Applicant's Response to issues raised at the Open Floor Hearing Held on 27th July 2016
8.23	Latest	04 August 2016	Applicant's Hearing Note on Actions requested at the Issue Specific Hearing on the Development Consent Order held on 28th July 2016
8.24	Latest	04 August 2016	Applicant's Hearing Note on Actions requested at the Issue Specific Hearing on the effect of the Broad Oak reservoir proposal on the Application held on 29th July 2016
Covering Letters			
		15 April 2016	Covering Letter to Respond to Section 51 Advice Dated 15 April 2016
		21 June 2016	Covering Letter for documents submitted on 21 June 2016
		14 July 2016	Covering Letter for documents submitted on 14 July 2016
		04 August 2016	Covering Letter for documents submitted on 4 August 2016