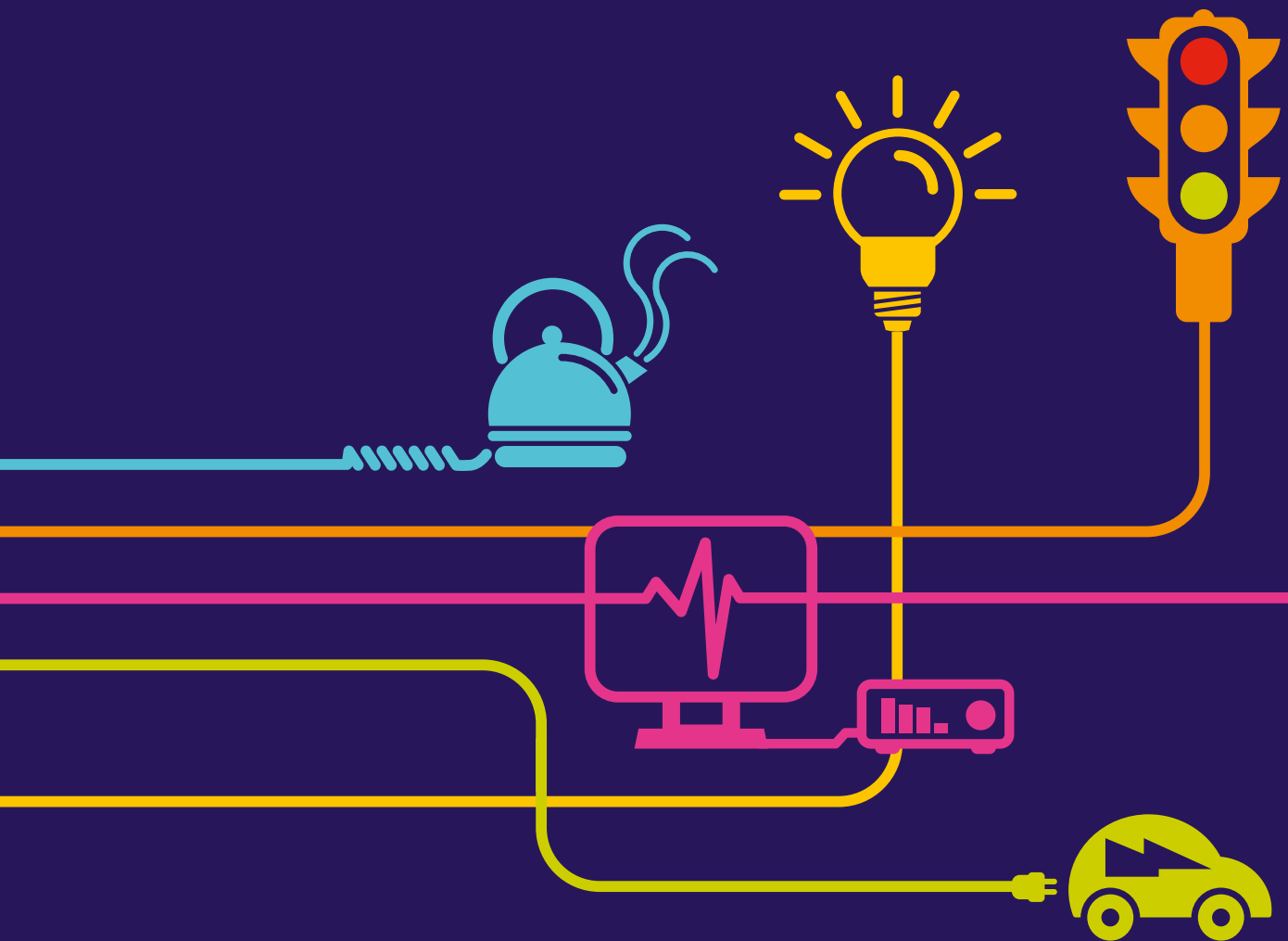


# Schedule under section 135 of the Planning Act 2008 in respect of Crown Land

National Grid (Richborough Connection Project) Order



**The Planning Act 2008**

**The proposed National Grid (Richborough Connection Project) Order**

**Schedule of Crown Land interests and compliance with section 135**

<b>Reference</b>	<b>8.3</b>
<b>Author</b>	<b>Bircham Dyson Bell LLP</b>
<b>Date</b>	<b>11 July 2016</b>
<b>Version</b>	<b>1</b>
<b>Planning Inspectorate reference number</b>	<b>EN020017</b>

## Schedule of Crown Land interests and compliance with section 135 of the Planning Act 2008

### **1 Introduction**

- 1.1 National Grid Electricity Transmission plc (“National Grid”) submitted in January 2016 an application for a Development Consent Order (“DCO”) to the Secretary of State for the Richborough Connection Project (application reference EN020017). The application was accepted by the Planning Inspectorate on 11 February 2016.
- 1.2 The DCO includes provision for the compulsory acquisition of rights in Crown land as defined by section 135 of the Planning Act 2008 as amended (“the Act”).
- 1.3 Under section 135 of the Act, the DCO may include a provision authorising the compulsory acquisition of an interest in Crown land only if the appropriate Crown authority consents to the acquisition and it is an interest which is for the time being held otherwise than by or on behalf of the Crown.

### **2 Crown Land**

- 2.1 The Crown Land referred to in the Book of Reference (Volume 3, Document 3.3) is all land for which The Crown Estate have an interest in. This is divided into two types:

2.1.1 Land where The Crown Estate is freehold proprietor.

2.1.2 Land that is ‘subject to escheat’.

No other Crown Land is affected by the DCO.

- 2.2 The full schedule of Crown Land is listed at the end of this document however an update on negotiations with The Crown Estate is set out in sections 3 and 4 below.

### **3 Land where The Crown Estate is freehold proprietor**

- 3.1 This land covers plots 1020, 1046, 1056, 1059, 1389, 1392, 1429, 1439, 1446, 1449, 1451, 1456, 1458, 1593, 1597, 1615, 1616, 1619, 1633, 1636, 1658, 1663 and 1675.
- 3.2 National Grid has been actively engaging with The Crown Estate to reach agreement on the terms for a voluntary agreement for the acquisition of the required rights over this land. Heads of Terms have now been agreed and the parties are now proceeding to issue draft documentation to conclude the voluntary agreement. National Grid envisages that all Crown consents required in connection with these plots will be forthcoming during the examination.

#### **4 Land that is 'subject to escheat'**

4.1 This covers plots 30, 38, 47, 61, 65, 74, 76, 91, 93 and 95.

4.2 The land covered by these plots remain 'subject to escheat'. As set out in the Statement of Reasons (Volume 3, Document 3.1, section 12) The Crown Estate will not grant consent for rights sought over this land because it believes that to do so may encumber itself with the liabilities to which the property is subject. National Grid also does not anticipate that the land will lose its status as 'subject to escheat' during the examination period through a disposal to a third party due to the nature of the land.



<b>Book of Reference Plot No</b>	<b>Description of Land</b>	<b>Owner</b>	<b>Type of Crown Land: 1=Proprietor; 2=Escheat</b>	<b>Class of Rights to be acquired NG/UKPN<sup>1</sup></b>
30	66 square metres of residential land to east of 39 Ulcombe Gardens, Canterbury	The Crown Estate Commissioners	2	4/4
38	818 square metres of highway and verge forming part of the road and verge to the north of 44 Ulcombe Gardens, Canterbury	The Crown Estate Commissioners	2	4/4
47	51 square metres of highway to south east of 64 Ulcombe Gardens, Canterbury	The Crown Estate Commissioners	2	4/4
61	50 square metres of grassland to south east of 62 Ulcombe Gardens, Canterbury	The Crown Estate Commissioners	2	4/4
65	418 square metres of highway and verge to north of 62 Ulcombe Gardens, Canterbury	The Crown Estate Commissioners	2	4/4
74	145 square metres of grassland to the east of 29 Headcorn Drive, Canterbury	The Crown Estate Commissioners	2	4/4
76	149 square metres of grassland to the east of 29 Headcorn Drive, Canterbury	The Crown Estate Commissioners	2	4/4
91	1246 square metres of highway and verge at Sandhurst Close, Canterbury and Headcorn Drive, Canterbury	The Crown Estate Commissioners	2	4/4

<sup>1</sup> Class of Rights as described in more detail in the Book of Reference (Volume 3, Document 3.3)

<b>Book of Reference Plot No</b>	<b>Description of Land</b>	<b>Owner</b>	<b>Type of Crown Land: 1=Proprietor; 2=Escheat</b>	<b>Class of Rights to be acquired NG/UKPN<sup>1</sup></b>
93	2 square metres of residential land forming part of the garden at 38 Headcorn Drive, Canterbury	The Crown Estate Commissioners	2	4/4
95	4 square metres of land being part of path to south east of 8 Sandhurst Close, Canterbury	The Crown Estate Commissioners	2	4/4
1020	14 square metres of river forming part of the River Wantsum at Sarre Bridge, Island Road, Sarre, Birchington	The Crown Estate Commissioners	1	5/5
1046	644 square metres of river forming part of the River Wantsum, south of Elms Farm, north of the railway, Sarre, Birchington	The Crown Estate Commissioners	1	4/4
1056	442 square metres of river forming part of the River Wantsum, south of the railway, south east of Paddock Cottage, Ramsgate Road, north of River Great Stour, Sarre, Birchington	The Crown Estate Commissioners	1	1/0
1059	74 square metres of river forming part of the River Wantsum, south of the railway, north of River Great Stour, Sarre, Birchington	The Crown Estate Commissioners	1	5/0
1389	2026 square metres of river forming part of the River Stour, south west of Marsh Farmhouse, Marsh Farm Road, Minster	The Crown Estate Commissioners	1	3/3

<b>Book of Reference Plot No</b>	<b>Description of Land</b>	<b>Owner</b>	<b>Type of Crown Land: 1=Proprietor; 2=Escheat</b>	<b>Class of Rights to be acquired NG/UKPN<sup>1</sup></b>
1392	1876 square metres of river forming part of the River Stour, south west of Marsh Farmhouse, Marsh Farm Road, Minster, Ramsgate	The Crown Estate Commissioners	1	3/3
1429	79 square metres of river forming part of the River Stour, south west of the sewage works, Marsh Farm Road, Minster	The Crown Estate Commissioners	1	4/4
1439	1286 square metres of river forming part of the River Stour, south west of the sewage works, Marsh Farm Road, Minster	The Crown Estate Commissioners	1	3/3
1446	363 square metres of river forming part of the River Stour, south of Marsh Farmhouse, Marsh Farm Road, Minster	The Crown Estate Commissioners	1	1/3
1449	582 square metres of river forming part of the River Stour, south of Marsh Farmhouse, Marsh Farm Road, Minster	The Crown Estate Commissioners	1	1/3
1451	178 square metres of river forming part of the River Stour, south of Marsh Farmhouse, Marsh Farm Road, Minster	The Crown Estate Commissioners	1	1/0
1456	1072 square metres of river forming part of the River Stour, south of the sewage works, Marsh Farm Road, Minster	The Crown Estate Commissioners	1	3/3



<b>Book of Reference Plot No</b>	<b>Description of Land</b>	<b>Owner</b>	<b>Type of Crown Land: 1=Proprietor; 2=Escheat</b>	<b>Class of Rights to be acquired NG/UKPN<sup>1</sup></b>
1458	1669 square metres of river forming part of the River Stour, south of the sewage works, Marsh Farm Road, Minster	The Crown Estate Commissioners	1	3/3
1593	1155 square metres of river forming part of the River Stour, west of Richborough Power Station, east of the railway, Richborough, south of Weatherlees Hill Wastewater Treatment Works, Jutes Lane, Ramsgate	The Crown Estate Commissioners	1	3/3
1597	1678 square metres of river forming part of the River Stour, west of Richborough Power Station, east of the railway, Richborough, south of Weatherlees Hill Wastewater Treatment Works, Jutes Lane, Ramsgate	The Crown Estate Commissioners	1	3/3
1615	172 square metres of river forming part of the River Stour, west of Richborough Power Station, east of the railway, Richborough, south of Weatherlees Hill Wastewater Treatment Works, Jutes Lane, Ramsgate	The Crown Estate Commissioners	1	1/0
1616	871 square metres of river forming part of the River Stour, west of Richborough Power Station, east of the railway, Richborough, south of Weatherlees Hill Wastewater Treatment Works, Jutes Lane, Ramsgate	The Crown Estate Commissioners	1	1/3
1619	367 square metres of river forming part of the River Stour, west of Richborough Power Station, east of the railway, Richborough, south of Weatherlees Hill Wastewater Treatment Works, Jutes Lane, Ramsgate	The Crown Estate Commissioners	1	1/3

<b>Book of Reference Plot No</b>	<b>Description of Land</b>	<b>Owner</b>	<b>Type of Crown Land: 1=Proprietor; 2=Escheat</b>	<b>Class of Rights to be acquired NG/UKPN<sup>1</sup></b>
1633	2474 square metres of river forming part of the River Stour, west of Richborough Power Station, east of the railway, Richborough, south of Weatherlees Hill Wastewater Treatment Works, Jutes Lane, Ramsgate	The Crown Estate Commissioners	1	3/3
1636	2986 square metres of river forming part of the River Stour, west of Richborough Power Station, east of the railway, Richborough, south of Weatherlees Hill Wastewater Treatment Works, Jutes Lane, Ramsgate	The Crown Estate Commissioners	1	3/3
1658	71 square metres of river forming part of the River Stour, south west of the 132kV Substation, Richborough Power Station, Ramsgate Road, Richborough	The Crown Estate Commissioners	1	4/4
1663	2251 square metres of river forming part of the River Stour, south of the 132kV Substation, Richborough Power Station, east of the railway, west of Ramsgate Road, Richborough	The Crown Estate Commissioners	1	3/3
1675	68 square metres of river forming part of the River Stour, west of Biffa Waste Services, Household Recycling Plant, Ramsgate Road, Richborough	The Crown Estate Commissioners	1	2/0