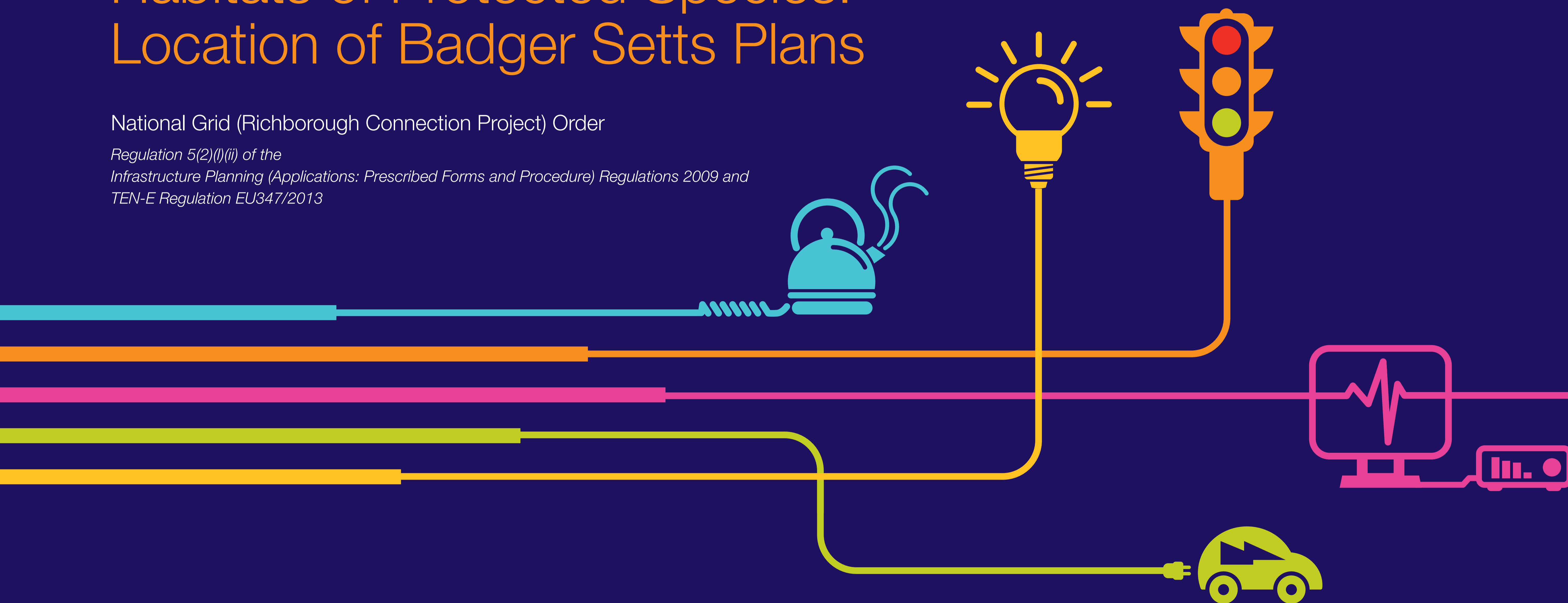


CONFIDENTIAL:

Habitats of Protected Species: Location of Badger Setts Plans

National Grid (Richborough Connection Project) Order

*Regulation 5(2)(l)(ii) of the
Infrastructure Planning (Applications: Prescribed Forms and Procedure) Regulations 2009 and
TEN-E Regulation EU347/2013*






Habitats of Protected Species: Location of Badger Setts



National Grid (Richborough Connection Project) Order

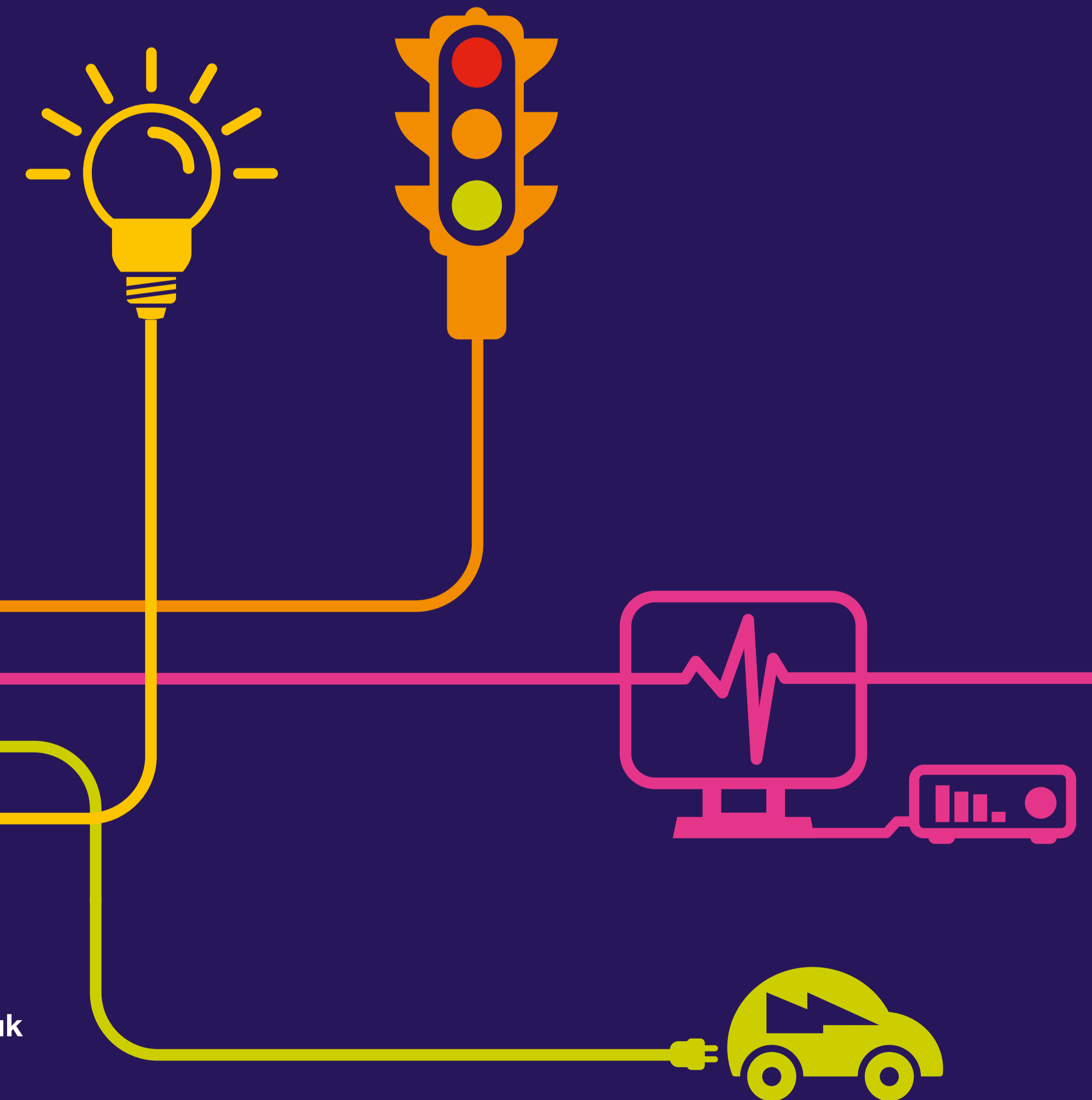
CONFIDENTIAL BADGER INFORMATION

These plans contain confidential information. Therefore these plans are only available on request to those who have a legitimate need to view the Information.

To request a copy of the document please use the contact details provided below:

-  Call our Freephone number: 0800 157 7878
-  Send an email to:
richboroughconnection@communitycomms.
-  Write to our freepost address at: FREEPOST
RICHBCONNECTION

-  Visit our project website:
www.richboroughconnection.co.uk
-  Follow us on Twitter: @
NGRichborough



Contact us



Visit our project website:
www.richboroughconnection.co.uk



Send an email to:
richboroughconnection@communitycomms.co.uk



Write to our freepost address at:
FREEPOST RICHBCONNECTION



Call our Freephone number:
0800 157 7878



Follow us on Twitter:
@NGRichborough
