

Navigation Document

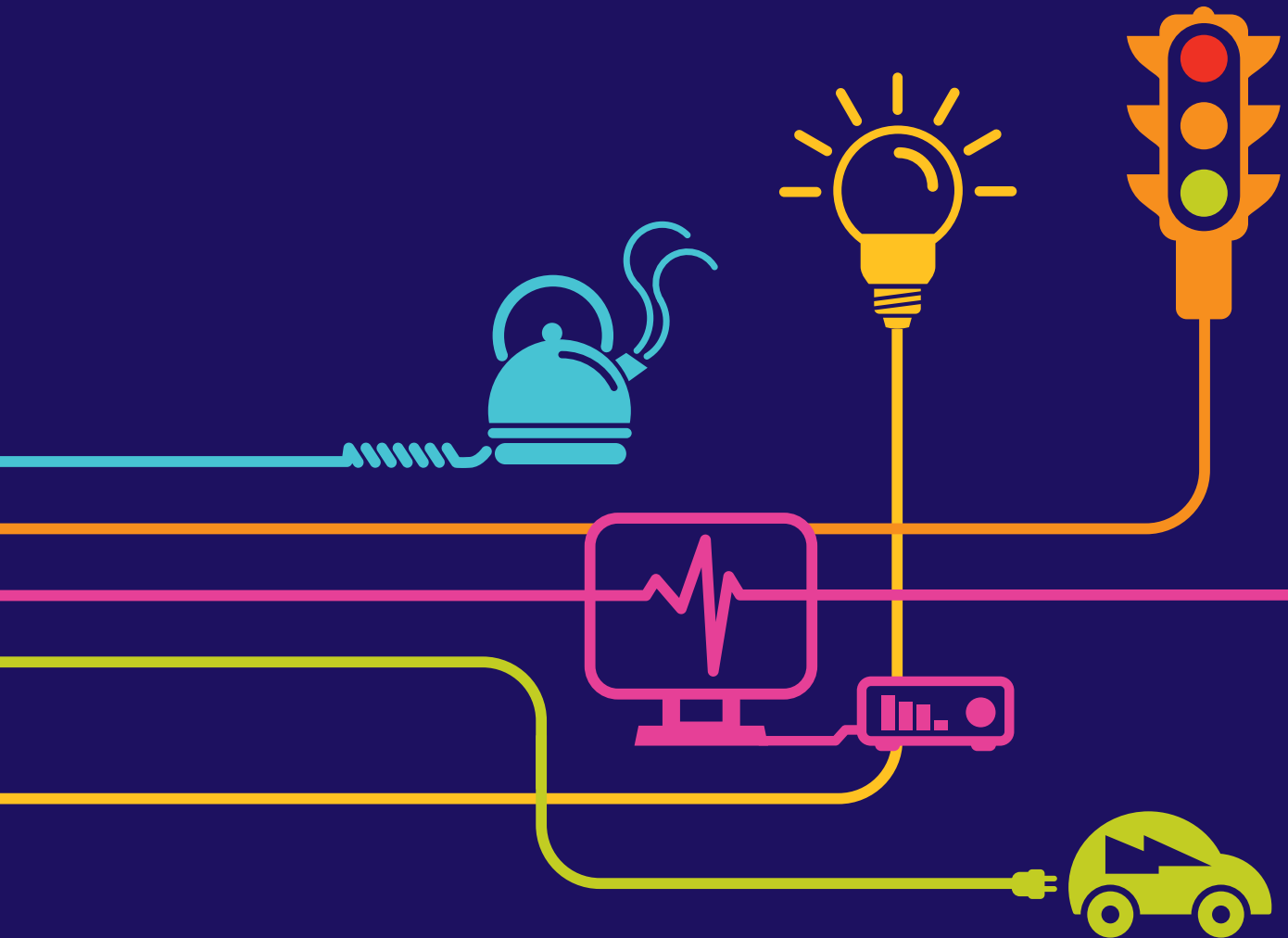
National Grid (Richborough Connection Project) Order

Regulation 5(2)(q) of the

Infrastructure Planning (Applications: Prescribed Forms and Procedure)

Regulations 2009 and

TEN-E Regulation EU347/2013



Richborough Connection Project

Volume 1

1.1 Navigation Document

National Grid
National Grid House
Warwick Technology Park
Gallows Hill
Warwick
CV34 6DA

Final

January 2016

Page intentionally blank

Document Control			
Document Properties			
Organisation	National Grid		
Author	Ken Guest		
Approved by	Steve Self		
Title	Navigation Document		
Document Reference	1.1		
Version History			
Date	Version	Status	Description/Changes
04/01/16	1	Final	1 st Issue

Page intentionally blank

Table of Contents

INTRODUCTION	1
The applicant and an overview of the Richborough Connection Project	1
The purpose of this document	1
Document numbering explained	2
TABLE OF APPLICATION DOCUMENTS	3
Documentation	3
VOLUME 1: APPLICATION INFORMATION	5
Introduction	5
Volume Contents	5
VOLUME 2: DRAFT DEVELOPMENT CONSENT ORDER	6
Introduction	6
Volume Contents	6
VOLUME 3: COMPULSORY ACQUISITION INFORMATION	7
Introduction	7
Volume Contents	7
VOLUME 4: PLANS AND DRAWINGS	8
Introduction	8
Volume Contents	8
VOLUME 5: ENVIRONMENTAL INFORMATION	10
Introduction	10
Volume Contents	10
VOLUME 6: CONSULTATION REPORT	12
Introduction	12
Volume Contents	12
VOLUME 7: OTHER REPORTS	13
Introduction	13
Volume Contents	13

List of Tables

Table 1.1	Application Volumes	2
-----------	---------------------	---

List of Figures

Figure 1.1	Document Numbering	2
------------	--------------------	---

Page intentionally blank

Introduction

The applicant and an overview of the Richborough Connection Project

At National Grid, our job is to connect people to the energy they use, whether to heat and light homes, or to keep factories and offices running. As old power stations close new sources of energy need to be connected to our network, so that electricity continues to be available at the flick of a switch.

One of these new sources of energy is a proposed high-voltage electricity link between Belgium and Richborough near Sandwich in Kent, known as the Nemo Link®. In order to transport the energy from the Nemo Link around the country, National Grid needs to connect it to the high-voltage electricity network.

There is no high-voltage electricity network in the Richborough area, so National Grid will need to build a new connection to join the Nemo Link from Richborough to their existing network approximately 20km away, near Canterbury. This new infrastructure project is known as the Richborough Connection project.

The proposed development consists of the following principle activities:

- A new 400,000 volts (400kV) overhead line between Richborough and Canterbury North 400kV Substations (to be known as the PC route). This would be approximately 20km long and would be built using 45 standard lattice pylons and 15 low height lattice pylons (60 pylons in total).
- A permanent diversion of an existing lower voltage 132,000 volts (132kV) overhead line, known as the PY route, owned by UK Power Networks.
- Three temporary diversions of another existing lower voltage 132kV overhead line, known as the PX route, owned by UK Power Networks.
- The removal of 20.6km (79 pylons) of the existing lower voltage 132kV PX route overhead line.
- Other works, for example, temporary access roads to reach pylon construction and demolition areas, bridge structures, highway works, construction compounds, protective scaffold structures, pylon work sites and ancillary works.

National Grid has prepared a series of plans and reports to explain our proposals to build a new 400kV overhead line between the existing 400kV substation at Canterbury and the proposed Richborough 400kV Substation. Our application has been submitted under the Planning Act 2008 (known as a Development Consent Order (DCO) application) and the TEN-E Regulations (European Legislation) which has been submitted to the Planning Inspectorate for their review.

The purpose of this document

This document provides a summary of the reports and plans in our application. The documents and reports that make up the application have been split into seven volumes listed in **Table 1.1**.

Table 1.1 – Application Volumes

Volume	This volume...
1. Application Information	provides specific application information required by the Planning Inspectorate
2. Draft Development Consent Order	outlines the legal powers we are seeking to build the proposed connection
3. Compulsory Acquisition Information	provides evidence of why and where legal powers of compulsory acquisition are being sought.
4. Plans and Drawings	contains the plans which show where we propose to undertake the work
5. Environmental Information	shows how we assessed the potential impact on the environment
6. Consultation Report	provides details of the pre-application consultation that we have undertaken on the project
7. Other Documents	includes additional documents produced for the application submission

To access the documents visit the Planning Inspectorate website:

<http://infrastructure.planningportal.gov.uk/projects/south-east/richborough-connection-project/>

Document numbering explained

The documents submitted as part of the application follow a consistent numbering format i.e. 1.1, 1.2, 4.1, 4.2...., with the exception of Volume 5, Documents 5.3 and 5.4. **Figure 1.1** shows how to understand the document numbering.

Figure 1.1 – Document Numbering

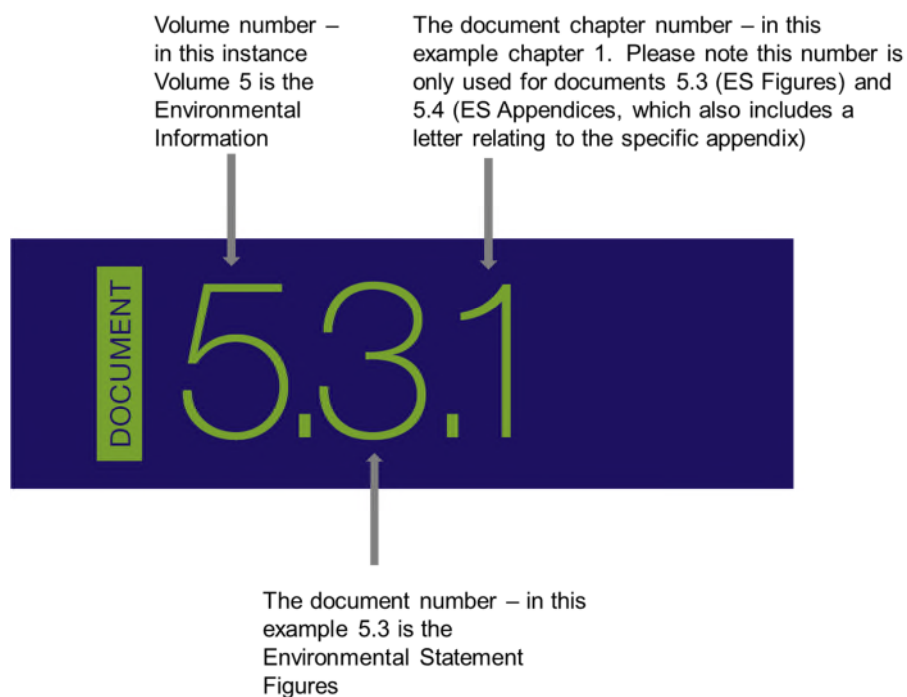


Table of Application Documents

Documentation

Below is the list of the volumes and documents that have been submitted as part of National Grid's DCO application (under the Planning Act 2008 and TEN-E Regulation).

Volume 1: Application information

- 1.1 Navigation Document
- 1.2 Application Letter
- 1.3 Application Form
- 1.4 Guide to the Application
- 1.5 Glossary

Volume 2: Draft Development Consent Order

- 2.1 Draft Development Consent Order
- 2.2 Explanatory Memorandum

Volume 3: Compulsory Acquisition Information

- 3.1 Statement of Reasons
- 3.2 Funding Statement
- 3.3 Book of Reference

Volume 4: Plans and Drawings

- 4.1 Location Plan
- 4.2 Land Affected Plans
- 4.3 Land Plans
- 4.4 Extinguishment of Easements, Servitudes and Other Private Rights Plans
- 4.5 Special Category Land Plans and Crown Land Plans
- 4.6 Works Plans
- 4.7 Access, Rights of Way and Public Rights of Navigation Plans
- 4.8 Traffic Regulation Order Plans
- 4.9 Environmental Features – Statutory or Non-Statutory Sites or Features of Nature Conservation
- 4.10 Habitats of Protected Species, Important Habitats or Other Diversity Features and Waterbodies in a River Basin Management Plan – Plans
- 4.11 CONFIDENTIAL: Habitats of Protected Species: Location of Badger Setts Plans
- 4.12 Heritage Designation Plans
- 4.13 Trees and Hedgerows to be Removed or Managed Plans
- 4.14 Design Drawings
- 4.15 Typical Construction Details

Volume 5: Environmental Information

- 5.1 Environmental Statement - Non Technical Summary
- 5.2 Environmental Statement
- 5.3 Environmental Statement - Figures
- 5.4 Environmental Statement – Appendices
- 5.5 No Significant Effects Report (Habitat Regulations Assessment Screening)
- 5.6 Statement of Statutory Nuisance
- 5.7 Electric and Magnetic Fields Report
- 5.8 Landscape and Habitat Enhancement Scheme

Volume 6: Consultation Report

- 6.1 Consultation Report
- 6.2 Consultation Report Appendices

Volume 7: Other Reports

- 7.1 Planning Statement
- 7.2 Details of other Consents and Licences
- 7.3 Need Case
- 7.4 Strategic Options Report
- 7.5 Route Corridor Study
- 7.6 Preferred Connection Option and Route Corridor Report
- 7.7 Connections Options Report
- 7.8 Pylon Design Options Report

Volume 1: Application Information

Introduction

This volume provides details of the application information required by the Planning Inspectorate when submitting an application and how to navigate the documentation.

The documents contained within this volume are shown below.

Volume Contents

- **1.1 Navigation Document** – provides a description of all documents and reports contained within the application.
- **1.2 Application Letter** - covering letter for the application. This also includes the s.55 Checklist.
- **1.3 Application Form** – provides the formal application form for the proposed development and lists documents included.
- **1.4 Guide to the Application** - this document provides a guide to National Grid's Richborough Connection Project Development Consent Order application and which document version is the most up to date.
- **1.5 Glossary** – provides an explanation of terminology used within application documents.

Volume 2: Draft Development Consent Order

Introduction

In order to build the proposed connection, National Grid need consent from the Government. These documents outline the legal powers National Grid is seeking.

The documents contained within this volume are shown below.

Volume Contents

- **2.1 Draft Development Consent Order** – contains a list of all the work National Grid propose to do and the powers that will enable them to carry out those works
- **2.2 Explanatory Memorandum** – explains the Draft Development Consent Order.

Volume 3: Compulsory Acquisition Information

Introduction

In order to build the proposed connection, National Grid need consent from the Government. These documents outline the legal powers National Grid is seeking.

The documents contained within this volume are shown below.

Volume Contents

- **3.1 Statement of Reasons** – provides an explanation of why National Grid may require legal powers to compulsory purchase land to build the connection.
- **3.2 Funding Statement** – explains how the development, including any compulsory purchase acquisition, is proposed to be funded.
- **3.3 Book of Reference** – identifies everyone who has a legal interest in the land affected by National Grid's proposals. The Book of Reference (BoR) should be read in conjunction with the Land Plans (**Volume 4, document 4.3**) which identifies the location of the plots of land.

Volume 4: Plans and Drawings

Introduction

This volume contains the plans which show where and how National Grid proposes to undertake its proposed works.

There are 15 different types of plan, each showing a different element of the project. Each set of plans is accompanied by a key plan and a key, which shows the symbols used on the plans, to help you understand what they show.

The documents contained within this volume are shown below.

Volume Contents

- **4.1 Location Plan** – this plan shows the whole proposed route from Canterbury to Richborough.
- **4.2 Land Affected Plans** – these show the boundary of all land affected, within which National Grid propose to build the connection
- **4.3 Land Plans** – these show the boundary within which National Grid propose to build the connection and the powers or rights to be exercised over the land.
- **4.4 Extinguishment of Easements, Servitudes and other Private Rights Plans** – these show existing rights on land required to build the connection and which will need to be extinguished as part of the proposed development
- **4.5 Special Category Land Plans and Crown Land Plans** – these show the boundary within which National Grid propose to build the connection and any special category land, such as common land, Crown Land or land owned by special bodies such as the National Trust. Not all parts of the route will have Special Category Land and Crown Land.
- **4.6 Works Plans** – these show the proposed limits of National Grid's DCO, the route of the development in each section and the distance either side of the proposed route where work may be carried out, known as the 'limits of deviation'.
- **4.7 Access and Rights of Way and Public Rights of Navigation Plans** – these show any changes proposed to public roads, footpaths, bridleways and rights of navigation and access to these.
- **4.8 Traffic Regulation Order Plans** – these show the proposed traffic management National Grid propose to implement during the construction of the proposed connection.
- **4.9 Environmental Features – Statutory or Non-Statutory Sites or Features of Nature Conservation Plans** – these show land which is of particular environmental importance, including areas that are important for the protection of nature or are protected habitats.
- **4.10 Habitats of Protected Species, Important Habitats or Other Diversity Features and Waterbodies in a River Basin Management Plan - Plans** – these show the locations of protected species' habitats.

- **4.11 CONFIDENTIAL: Habitats of Protected Species: Location of Badger Setts Plans** – these show the location of protected species and badger setts. Owing to their legal status these plans will not be made publicly available.
- **4.12 Heritage Designations Plans** – show historically important places such as listed buildings, scheduled monuments or archaeological sites. Located within the Environmental Statement Appendices (**Volume 5, document 5.4.8b**) is an appendix of historic buildings, historic landscape components, and known or potential archaeological sites for the area in which the proposed development would be located.
- **4.13 Trees and Hedges to be Removed or Managed Plans** – these show trees and hedges we may need to remove or managed when National Grid build the proposed development.
- **4.14 Design Drawings** – these provide details on the size and height of the new infrastructure National Grid propose.
- **4.15 Typical Construction Details** – these provide typical drawing details such as the size and height of temporary bridges that are required to construct the project.

Volume 5: Environmental Information

Introduction

At National Grid, we try to balance the need to build our equipment with consideration for the environment.

To understand this balance, National Grid has completed an Environmental Impact Assessment (EIA) to consider the likely effects of the proposed development on the environment. The Environmental Statement (ES) provides the results of the EIA (documents 5.1 to 5.4 of this volume).

A number of stand alone environmental reports are also contained in Volume 5, documents 5.5 to 5.8.

The documents contained within this volume are shown below.

Volume Contents

- **5.1 Environmental Statement – Non Technical Summary** – a non-technical summary of the ES
- **5.2 Environmental Statement** - the chapters contained within the ES and a brief description are shown below.
 - **Chapter 1 – Introduction** - an introduction to the ES.
 - **Chapter 2 – Need for the proposed development and alternatives considered to date** - details the need for the project, the alternative connection options and routes considered and design changes which have been made.
 - **Chapter 3 – Description of the proposed development-** the description of the project referred to throughout the ES.
 - **Chapter 4 – Planning Policy Context** – puts the proposals in the context of national, regional and local planning policy.
 - **Chapter 5 - Approach to the Environmental Statement** – outlines the approach and methodology adopted in the preparation of the Environmental Statement.
 - **Chapter 6 - Landscape** – National Grid’s assessment of the features and characteristics that shape the landscape.
 - **Chapter 7 - Visual** – our assessment of important viewpoints.
 - **Chapter 8 - Historic Environment** – National Grid’s assessment of archaeological remains, historic buildings and other historic aspects of the landscape.
 - **Chapter 9 - Biodiversity** – National Grid’s assessment of areas specially protected for nature conservation and protected habitats and species.

- **Chapter 10 - Traffic and Transport** – National Grid’s assessment of the transport network such as roads, public rights of way, footpaths, public bridleways, byways, railways, rivers and cycle routes.
 - **Chapter 11 - Noise and Vibration** – National Grid’s assessment of noise levels as we construct overhead lines, remove an existing overhead line and the operation of the new overhead line.
 - **Chapter 12 - Air Quality** – National Grid’s preliminary assessment of air quality, for example, dust from earthworks or gases from vehicle exhausts during construction.
 - **Chapter 13 - Water Environment** – National Grid’s assessment of the risk of flooding and water quality.
 - **Chapter 14 – Geology, Soils and Agriculture**– National Grid’s assessment of soils, geology and ground contamination.
 - **Chapter 15 - Socio-economics and Recreation** –National Grid’s assessment of socio-economic features and on existing and future land uses during construction and operation.
 - **Chapter 16 – Cumulative Effects Summary** – National Grid’s assessment of how the effects of the proposed development could combine with those of other proposals in the nearby area.
- **5.3 Environmental Statement Figures** – this contains all the diagrams and maps referred to in the ES.
 - **5.4 Environmental Statement Appendices** – this contains background technical information referred to in the ES.
 - **5.5 No Significant Effects Report (Habitat Regulations Assessment Screening)** – produced to inform the Habitat Regulations Assessment (HRA) process for the proposed development.
 - **5.6 Statement of Statutory Nuisance** – describes the relevant nuisances defined in the Environmental Protection Act 1990, as a result of the Proposed Development.
 - **5.7 Electric and Magnetic Fields Report** – National Grid’s assessment of electric and magnetic fields in the area which will be created by the new connection.
 - **5.8 Landscape and Habitat Enhancement Scheme** – this document shows proposed environmental enhancement schemes.

Volume 6: Consultation Report

Introduction

This volume contains the Consultation Report for the project.

The documents contained within this volume are shown below.

Volume Contents

- **6.1 Consultation Report** – provides an account of the pre-application consultation undertaken on the project, including statutory consultation under sections 42, 47 and 48 of the Planning Act 2008. The document also includes a summary of the relevant responses received as part of the pre-application consultation, and how these have been taken into account.
- **6.2 Consultation Report Appendices** – supporting documents for the Consultation Report.

Volume 7: Other Reports

Introduction

This volume includes additional documents that National Grid has produced for the application submission.

The documents contained within this volume are shown below.

Volume Contents

- **7.1 Planning Statement** – this outlines the relevant local and national planning policies relating to the application.
- **7.2 Details of other Consents and Licenses** – this lists and briefly describes any other consents, licenses and permits that the proposed development might need to enable it to be constructed and operated (including those already applied for).
- **7.3 Need Case** – this explains why the Richborough Connection Project is needed. This was first published October 2011.
- **7.4 Strategic Options Report** – this explains the process of developing and assessing the strategic options, which led to National Grid’s proposals. The costs of these options are included in the report. This was first published June 2013.
- **7.5 Route Corridor Study** – this documents the work undertaken to identify and appraise the potential route corridor options which could accommodate a 400kV overhead line between the Nemo Link Interconnector proposed at the former Richborough power station site and the existing Canterbury North substation. This was first published June 2013.
- **7.6 Preferred Connection Option and Route Corridor Report** – this sets out why National Grid has chosen to propose an overhead connection between Richborough and Canterbury. It also sets out how National Grid assessed the two areas of land in which the connection could be built (known as route corridors) taking into account feedback received from the non-statutory pre-application Summer 2013 consultation. This was first published November 2013.
- **7.7 Connections Options Report** – this explains how National Grid has looked at different options for building the Richborough Connection within the preferred route corridor and the reasons for choosing our preferred draft route. This was first published May 2014.
- **7.8 Pylon Design Options Report** – this explains how National Grid has considered the different pylon designs available to the project. This was first published February 2015.

Contact us



Visit our project website:

www.richboroughconnection.co.uk



Send an email to:

richboroughconnection@communitycomms.co.uk



Write to our freepost address at:

FREEPOST RICHBCONNECTION



Call our freephone number:

0800 157 7878



Follow us on Twitter:

@NGRichborough
