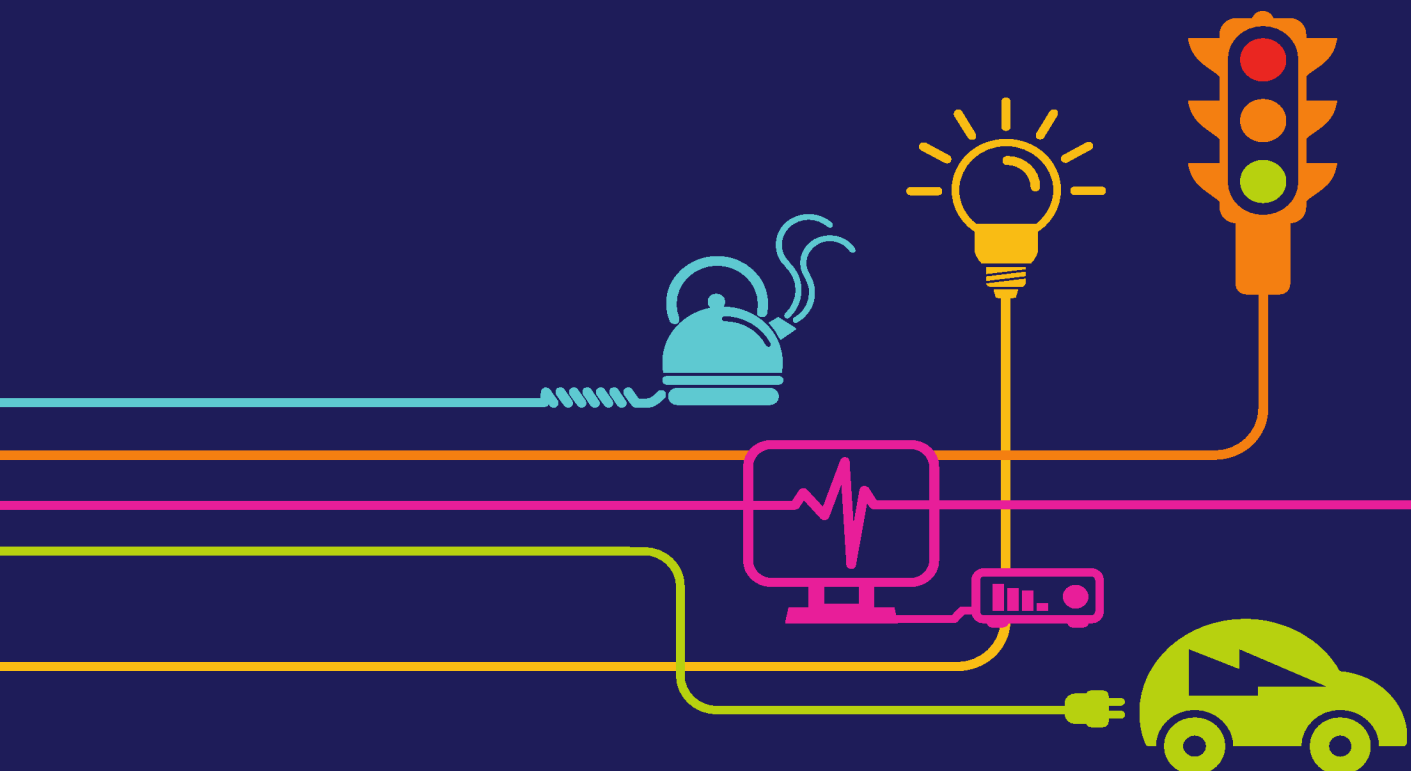


Guide to the Application

National Grid (North Wales Connection Project)

*Regulation 5(2)(a) of the Infrastructure Planning
(Applications: Prescribed Forms and Procedure) Regulations 2009*



national**grid**

North Wales Connection Project

Volume 1

1.5 Guide to the Application

National Grid
National Grid House
Warwick Technology Park
Gallows Hill
Warwick
CV34 6DA

December 2018

Document Control			
Document Properties			
Organisation	National Grid		
Author	Sian Robinson		
Approved by	Ken Guest		
Title	Guide to the Application		
Document Reference	1.5(B)		
Version History			
Date	Version	Status	Description/Changes
01/09/2018	A	Final	First Issue
03/12/2018	B	Final	Updated post Submission

Master Document List - Submissions Made to the Planning Inspectorate					
Document	PINS Reference No & Hyper Link.	Version	Status	Submission Date	Document Title
Volume 1 Application Information					
1.1	APP-001	A		07/09/18	Navigation Document
1.2	APP-002	A		07/09/18	Application Letter (inc s55 Acceptance of Applications Checklist)
1.3	APP-003	A		07/09/18	Application Form
1.4	APP-004	A		07/09/18	Glossary
1.5	APP-005	A	Superseded	07/09/18	Guide to the Application
1.5 (B)	-----	B	Latest	03/12/18	Guide to the Application
Volume 2 Draft Development Consent Order					
2.1	APP-006	A	Superseded	07/09/18	Draft Development Consent Order
2.1 (B)	-----	B	Latest	03/12/18	Draft Development Consent Order
2.1 (B)	-----	B	Latest	03/12/18	Draft Development Consent Order (Tracked Change Version)
2.2	APP-007	A		07/09/18	Draft Explanatory Memorandum
Volume 3 Compulsory Acquisition Information					
3.1	APP-008	A		07/09/18	Statement of Reasons
3.2	APP-009	A		07/09/18	Funding Statement
3.3_Part 1 of 5	APP-010	A		07/09/18	Book of Reference
3.3_Part 2 of 5	APP-011	A		07/09/18	Book of Reference
3.3_Part 3 of 5	APP-012	A		07/09/18	Book of Reference
3.3_Part 4 of 5	APP-013	A		07/09/18	Book of Reference
3.3_Part 5 of 5	APP-014	A		07/09/18	Book of Reference
Volume 4 Plans and Drawings					
4.0.1	APP-015	A		07/09/18	Overall Location Plan
4.0.2	APP-016	A		07/09/18	Master Key Plan
4.1	APP-017	A		07/09/18	Land Affected Plans
4.2	APP-018	A		07/09/18	Land Plans
4.3	APP-019	A		07/09/18	Special Category Land and Crown Land Plans
4.4	APP-020	A		07/09/18	Works Plans
4.5	APP-021	A		07/09/18	Access and Rights of Way Plans
4.6	APP-022	A		07/09/18	Other Environmental Features Plans
4.7	APP-023	A		07/09/18	Statutory or Non-Statutory Sites or Features of Nature Conservation, Habitats and Water Bodies Plans
4.8	APP-024	A		07/09/18	Habitats of Protected Species, Important Habitats or Other Diversity Features Plans
4.9	APP-025	A		07/09/18	CONFIDENTIAL: Habitats of Protected Species: Location of Badger Setts Plans
4.10	APP-026	A		07/09/18	Statutory or Non-Statutory Sites or Features of the Historic Environment Plans
4.11	APP-027	A		07/09/18	Trees and Hedgerows Potentially Affected Plans
4.12	APP-028	A		07/09/18	Traffic Regulation Order Plans
4.13	APP-029	A		07/09/18	Design Plans
4.14	APP-030	A		07/09/18	Plans Guidance Document
Volume 5 Environmental Information					
5.0	APP-031	A		07/09/18	Environmental Statement - Non Technical Summary
5.1	APP-032	A		07/09/18	Chapter 1: Introduction
5.1.1.1	APP-033	A		07/09/18	Chapter 1 - Figure 1 - Location of the Proposed Development Plan
5.1.2.1	APP-034	A		07/09/18	Chapter 1 - Appendix 1 - Notification to Provide an Environmental Statement
5.2	APP-035	A		07/09/18	Chapter 2: Alternatives and Proposed Development History
5.3	APP-036	A		07/09/18	Chapter 3: Description of the Proposed Development
5.3.1.1	APP-037	A		07/09/18	Chapter 3 - Figure 1 - Order Limits and Limits of Deviation

Master Document List - Submissions Made to the Planning Inspectorate					
Document	PINS Reference No & Hyper Link.	Version	Status	Submission Date	Document Title
5.3.1.2	APP-038	A		07/09/18	Chapter 3 - Figure 2 - Sections of New and Existing Overhead Line
5.3.2.1	APP-039	A		07/09/18	Chapter 3 - Appendix 1 - Indicative Pylon Schedule
5.3.2.2	APP-040	A		07/09/18	Chapter 3 - Appendix 2 - Indicative Watercourse Crossing Schedule
5.3.2.3	APP-041	A		07/09/18	Chapter 3 - Appendix 3 - Indicative Public Rights of Way, Road and Railway Crossing Schedule
5.3.2.4	APP-042	A		07/09/18	Chapter 3 - Appendix 4 - Indicative Utility Crossing Schedule
5.4	APP-043	A		07/09/18	Chapter 4: Construction, Operation, Maintenance and Decommissioning of the Proposed Development
5.4.1.1	APP-044	A		07/09/18	Chapter 4 - Figure 1 - National Grid Construction Plans
5.4.1.2	APP-045	A		07/09/18	Chapter 4 - Figure 2 - Third Party Construction plans
5.4.2.1	APP-046	A		07/09/18	Chapter 4 - Appendix 1 -Temporary Access Principles
5.5	APP-047	A		07/09/18	Chapter 5 - EIA Consultation
5.5.2.1	APP-048	A		07/09/18	Chapter 5 - Appendix 1 - Schedule of Responses to the Scoping Opinion
5.5.2.2	APP-049	A		07/09/18	Chapter 5 - Appendix 2 - Schedule of Responses to the PEIR
5.5.2.3	APP-050	A		07/09/18	Chapter 5 - Appendix 3 - Schedule of Responses to Stakeholder Review of the Draft ES
5.6	APP-051	A		07/09/18	Chapter 6 - EIA Methodology and Basis of Assessment
5.7	APP-052	A		07/09/18	Chapter 7 - Landscape Assessment
5.7.1.1	APP-053	A		07/09/18	Chapter 7 - Figure 1 - Landscape Constraints Overview
5.7.1.2	APP-054	A		07/09/18	Chapter 7 - Figure 2 - Landscape Constraints
5.7.1.3	APP-055	A		07/09/18	Chapter 7 - Figure 3 - Anglesey Area of Outstanding Natural Beauty and its Setting
5.7.1.4	APP-056	A		07/09/18	Chapter 7 - Figure 4 - Snowdonia National Park and its Setting
5.7.1.5	APP-057	A		07/09/18	Chapter 7 - Figure 5 - Landform and Drainage Overview
5.7.1.6	APP-058	A		07/09/18	Chapter 7 - Figure 6 - Landform and Drainage
5.7.1.7	APP-059	A		07/09/18	Chapter 7 - Figure 7 - Landscape Overview
5.7.1.8	APP-060	A		07/09/18	Chapter 7 - Figure 8 - LANDMAP Visual and Sensory Aspect Areas Overview
5.7.1.9	APP-061	A		07/09/18	Chapter 7 - Figure 9 - LANDMAP Visual and Sensory Aspect Areas
5.7.1.10	APP-062	A		07/09/18	Chapter 7 - Figure 10 - National Landscape Characters Areas, Regional Landscape Character Areas, and LANDMAP Visual and Sensory Aspect Areas
5.7.1.11	APP-063	A		07/09/18	Chapter 7 - Figure 11 - National Marine Character Areas, Local Seascape Character Areas, and LANDMAP Visual and Sensory Aspect Areas
5.7.1.12	APP-064	A		07/09/18	Chapter 7 - Figure 12 - Landscape Mitigation Location Plan
5.7.1.13	APP-065	A		07/09/18	Chapter 7 - Figure 13 - Landscape Mitigation Proposals for OHL
5.7.1.14	APP-066	A		07/09/18	Chapter 7 - Figure 14 - Landscape Mitigation Proposals for Braint THH/CSEC
5.7.1.15	APP-067	A		07/09/18	Chapter 7 - Figure 15 - Landscape Mitigation Proposals for Tŷ Fodol THH/CSEC
5.7.1.16	APP-068	A		07/09/18	Chapter 7 - Figure 16 - Landscape Mitigation Proposals for Pentir Substation Extension
5.7.1.17	APP-069	A		07/09/18	Chapter 7 - Figure 17 - Effects on Landscape Elements
5.7.2.1	APP-070	A		07/09/18	Chapter 7 - Appendix 1 - Local Planning Policy
5.7.2.2	APP-071	A		07/09/18	Chapter 7 - Appendix 2 - VSAA Character Assessment
5.7.2.3	APP-072	A		07/09/18	Chapter 7 - Appendix 3 - Landscape Character Areas Relevant to the Study Area
5.7.2.4	APP-073	A		07/09/18	Chapter 7 - Appendix 4 - Registered Parks and Gardens Excluded from the Landscape Assessment
5.8	APP-074	A		07/09/18	Chapter 8 - Visual Assessment
5.8.1.1	APP-075	A		07/09/18	Chapter 8 - Figure 1 - Visual Receptors
5.8.1.2	APP-076	A		07/09/18	Chapter 8 - Figure 2 - Overall Zones of Theoretical Visibility
5.8.1.3	APP-077	A		07/09/18	Chapter 8 - Figure 3 - Zones of Theoretical Visibility Braint Cable Sealing End Compound and Tunnel Head House
5.8.1.4	APP-078	A		07/09/18	Chapter 8 - Figure 4 - Zones of Theoretical Visibility Tŷ Fodol Cable Sealing End Compound and Tunnel Head House
5.8.1.5	APP-079	A		07/09/18	Chapter 8 - Figure 5 - Zones of Theoretical Visibility Wylfa (Gantry)
5.8.1.6	APP-080	A		07/09/18	Chapter 8 - Figure 6 - Zones of Theoretical Visibility Pentir Substation
5.8.1.7	APP-081	A		07/09/18	Chapter 8 - Figure 7 - Effects on Communities During Construction
5.8.1.8	APP-082	A		07/09/18	Chapter 8 - Figure 8 - Effects on Communities During Operation
5.8.1.9	APP-083	A		07/09/18	Chapter 8 - Figure 9 - Effects on Residential Receptors During Construction
5.8.1.10	APP-084	A		07/09/18	Chapter 8 - Figure 10 - Effects on Residential Receptors During Operation

Master Document List - Submissions Made to the Planning Inspectorate

Document	PINS Reference No & Hyper Link.	Version	Status	Submission Date	Document Title
5.8.1.11	APP-085	A		07/09/18	Chapter 8 - Figure 11 - Effects on Recreational Receptors During Construction
5.8.1.12	APP-086	A		07/09/18	Chapter 8 - Figure 12 - Effects on Recreational Receptors During Operation
5.8.1.13	APP-087	A		07/09/18	Chapter 8 - Figure 13 - Effects on Roads and Rail During Construction
5.8.1.14	APP-088	A		07/09/18	Chapter 8 - Figure 14 - Effects on Roads and Rail During Operation
5.8.2.1	APP-089	A		07/09/18	Chapter 8 - Appendix 1 - Local Landscape Policy
5.8.2.2_Part 1 of 6	APP-090	A		07/09/18	Chapter 8 - Appendix 2 - Viewpoint Assessment
5.8.2.2_Part 2 of 6	APP-091	A		07/09/18	Chapter 8 - Appendix 2 - Viewpoint Assessment
5.8.2.2_Part 3 of 6	APP-092	A		07/09/18	Chapter 8 - Appendix 2 - Viewpoint Assessment
5.8.2.2_Part 4 of 6	APP-093	A		07/09/18	Chapter 8 - Appendix 2 - Viewpoint Assessment
5.8.2.2_Part 5 of 6	APP-094	A		07/09/18	Chapter 8 - Appendix 2 - Viewpoint Assessment
5.8.2.2_Part 6 of 6	APP-095	A		07/09/18	Chapter 8 - Appendix 2 - Viewpoint Assessment
5.8.2.3	APP-096	A		07/09/18	Chapter 8 - Appendix 3 - Residential Visual Amenity Assessment
5.8.2.4	APP-097	A		07/09/18	Chapter 8 - Appendix 4 - Public Right of Way Assessment
5.8.2.5	APP-098	A		07/09/18	Chapter 8 - Appendix 5 - Views from Roads Assessment
5.9	APP-099	A		07/09/18	Chapter 9 - Ecology and Nature Conservation
5.9.1.1	APP-100	A		07/09/18	Chapter 9 - Figure 1 - Statutory Designated Sites
5.9.1.2	APP-101	A		07/09/18	Chapter 9 - Figure 2 - Statutory Designated Sites in the Wider Area
5.9.1.3	APP-102	A		07/09/18	Chapter 9 - Figure 3 - Non-Statutory Designated Sites
5.9.1.4	APP-103	A		07/09/18	Chapter 9 - Figure 4 - Non-Statutory Designated Sites - Wildlife Sites
5.9.1.5	APP-104	A		07/09/18	Chapter 9 - Figure 5 - Marine Statutory Designated Sites
5.9.1.6	APP-105	A		07/09/18	Chapter 9 - Figure 6 - Marine Drop Down Camera and Grab Sample Sites
5.9.1.7	APP-106	A		07/09/18	Chapter 9 - Figure 7 - New Benthic Habitats
5.9.1.8	APP-107	A		07/09/18	Chapter 9 - Figure 8 - Grey Seal - Total Estimated Usage for the Irish Sea
5.9.2.1	APP-108	A		07/09/18	Chapter 9 Appendix 1 - Local Planning Policy
5.9.2.2	APP-109	A		07/09/18	Chapter 9 Appendix 2 - Designated Sites Information
5.9.2.3	APP-110	A		07/09/18	Chapter 9 Appendix 3 - Phase 1 Habitat Report
5.9.2.4	APP-111	A		07/09/18	Chapter 9 Appendix 4 - National Vegetation Classification Report
5.9.2.5	APP-112	A		07/09/18	Chapter 9 Appendix 5 - Hedgerow Report
5.9.2.6	APP-113	A		07/09/18	Chapter 9 Appendix 6 - Great Crested Newt Report
5.9.2.7	APP-114	A		07/09/18	Chapter 9 Appendix 7 - Badger Report (CONFIDENTIAL)
5.9.2.8	APP-115	A		07/09/18	Chapter 9 Appendix 8 – Otter and Water Vole Report (CONFIDENTIAL)
5.9.2.9	APP-116	A		07/09/18	Chapter 9 Appendix 9 - Reptile Report
5.9.2.10	APP-117	A		07/09/18	Chapter 9 Appendix 10 - Bat Roost Report (CONFIDENTIAL)
5.9.2.11	APP-118	A		07/09/18	Chapter 9 Appendix 11 - Bat Activity Report (CONFIDENTIAL)
5.9.2.12	APP-119	A		07/09/18	Chapter 9 Appendix 12 - Terrestrial Mammal Report
5.9.2.13	APP-120	A		07/09/18	Chapter 9 Appendix 13 - Freshwater Report (CONFIDENTIAL)
5.9.2.14	APP-121	A		07/09/18	Chapter 9 Appendix 14 - Terrestrial Invertebrate Report
5.9.2.15	APP-122	A		07/09/18	Chapter 9 Appendix 15 - Ornithological Assessment Report (CONFIDENTIAL)
5.9.2.16	APP-123	A		07/09/18	Chapter 9 Appendix 16 - Menai Strait Intertidal Report
5.9.2.17	APP-124	A		07/09/18	Chapter 9 Appendix 17 - Menai Strait Subtidal Ecology Survey Report
5.9.2.18	APP-125	A		07/09/18	Chapter 9 Appendix 18 - Underwater Construction Noise Modelling and Assessment Report
5.10	APP-126	A		07/09/18	Chapter 10 - Historic Environment
5.10.1.1	APP-127	A		07/09/18	Chapter 10 - Figure 1 - Designated Assets
5.10.1.2	APP-128	A		07/09/18	Chapter 10 - Figure 2 - Non-Designated Assets
5.10.1.3	APP-129	A		07/09/18	Chapter 10 - Figure 3 - Extent of Geophysical Surveys
5.10.1.4	APP-130	A		07/09/18	Chapter 10 - Figure 4 - Geophysical Survey Results
5.10.1.5	APP-131	A		07/09/18	Chapter 10 - Figure 5 - Location of Trial Trenches

Master Document List - Submissions Made to the Planning Inspectorate

Document	PINS Reference No & Hyper Link.	Version	Status	Submission Date	Document Title
5.10.1.6	APP-132	A		07/09/18	Chapter 10 - Figure 6 - Assets Included in the Settings Assessment
5.10.1.7	APP-133	A		07/09/18	Chapter 10 - Figure 7 - Dinorwig Landscape of Outstanding Historical Interest
5.10.1.8	APP-134	A		07/09/18	Chapter 10 - Figure 8 - Location of Recorded Archaeological Remains in Relation to the Proposed Development
5.10.1.9	APP-135	A		07/09/18	Chapter 10 - Figure 9 - Settings Assessment: Location of Assets in Relation to the Proposed Development
5.10.2.1	APP-136	A		07/09/18	Chapter 10 - Appendix 1 - Historic Environment Desk Study Report
5.10.2.2_Part 1 of 8	APP-137	A		07/09/18	Chapter 10 - Appendix 2 - Geophysical Survey Report
5.10.2.2_Part 2 of 8	APP-138	A		07/09/18	Chapter 10 - Appendix 2 - Geophysical Survey Report
5.10.2.2_Part 3 of 8	APP-139	A		07/09/18	Chapter 10 - Appendix 2 - Geophysical Survey Report
5.10.2.2_Part 4 of 8	APP-140	A		07/09/18	Chapter 10 - Appendix 2 - Geophysical Survey Report
5.10.2.2_Part 5 of 8	APP-141	A		07/09/18	Chapter 10 - Appendix 2 - Geophysical Survey Report
5.10.2.2_Part 6 of 8	APP-142	A		07/09/18	Chapter 10 - Appendix 2 - Geophysical Survey Report
5.10.2.2_Part 7 of 8	APP-143	A		07/09/18	Chapter 10 - Appendix 2 - Geophysical Survey Report
5.10.2.2_Part 8 of 8	APP-144	A		07/09/18	Chapter 10 - Appendix 2 - Geophysical Survey Report
5.10.2.3	APP-145	A		07/09/18	Chapter 10 - Appendix 3 - ASIDOHL
5.10.2.4	APP-146	A		07/09/18	Chapter 10 - Appendix 4 - CADW Designations
5.10.2.5	APP-147	A		07/09/18	Chapter 10 - Appendix 5 - Historic Environment Photographs
5.10.2.6	APP-148	A		07/09/18	Chapter 10 - Appendix 6 - Development Plan Policies
5.10.2.7	APP-149	A		07/09/18	Chapter 10 - Appendix 7 - Trial Trench Report
5.10.2.8	APP-150	A		07/09/18	Chapter 10 - Appendix 8 - Heritage Viewpoints
5.11	APP-151	A		07/09/18	Chapter 11 - Geology, Hydrogeology and Ground Conditions
5.11.1.1	APP-152	A		07/09/18	Chapter 11 - Figure 1 - Bedrock Geology
5.11.1.2	APP-153	A		07/09/18	Chapter 11 - Figure 2 - Superficial Geology
5.11.1.3	APP-154	A		07/09/18	Chapter 11 - Figure 3 - Superficial Hydrogeology
5.11.1.4	APP-155	A		07/09/18	Chapter 11 - Figure 4 - Bedrock Hydrogeology
5.11.1.5	APP-156	A		07/09/18	Chapter 11 - Figure 5 - Contaminated Land Regulatory Information
5.11.1.6	APP-157	A		07/09/18	Chapter 11 - Figure 6 - Private Groundwater Abstractions
5.11.1.7	APP-158	A		07/09/18	Chapter 11 - Figure 7 - Potentially Contaminated Land
5.11.1.8	APP-159	A		07/09/18	Chapter 11 - Figure 8 - Historical Land Uses
5.11.1.9	APP-160	A		07/09/18	Chapter 11 - Figure 9 - Surface Ground Working
5.11.1.10	APP-161	A		07/09/18	Chapter 11 - Figure 10 - Coal Authority Information
5.11.1.11	APP-162	A		07/09/18	Chapter 11 - Figure 11 - Tunnel Geological Longitudinal Section
5.11.1.12	APP-163	A		07/09/18	Chapter 11 - Figure 12 - LANDMAP Geological Landscapes
5.11.2.1	APP-164	A		07/09/18	Chapter 11 - Appendix 1 - Local Planning Policy
5.11.2.2	APP-165	A		07/09/18	Chapter 11 - Appendix 2 - Reference Tables for Figures 11.5, 11.6, 11.7, 11.8 and 11.9
5.11.2.3	APP-166	A		07/09/18	Chapter 11 - Appendix 3 - Regulator Correspondence
5.11.2.4	APP-167	A		07/09/18	Chapter 11 - Appendix 4 - Coal Authority Report
5.11.2.5	APP-168	A		07/09/18	Chapter 11 - Appendix 5 - Walkover Survey
5.11.2.6	APP-169	A		07/09/18	Chapter 11 - Appendix 6 - Private Water Supply Risk Assessment
5.11.2.7_Part 1 of 4	APP-170	A		07/09/18	Chapter 11 - Appendix 7 - Ground Investigation Information
5.11.2.7_Part 2 of 4	APP-171	A		07/09/18	Chapter 11 - Appendix 7 - Ground Investigation Information
5.11.2.7_Part 3 of 4	APP-172	A		07/09/18	Chapter 11 - Appendix 7 - Ground Investigation Information
5.11.2.7_Part 4 of 4	APP-173	A		07/09/18	Chapter 11 - Appendix 7 - Ground Investigation Information
5.11.2.8	APP-174	A		07/09/18	Chapter 11 - Appendix 8 - Shaft and Tunnel Groundwater Inflow
5.12	APP-175	A		07/09/18	Chapter 12 - Geology, Hydrogeology and Ground Conditions
5.12.1.1	APP-176	A		07/09/18	Chapter 12 - Figure 1 - Local and Wider Hydrological Area of Influence
5.12.1.2	APP-177	A		07/09/18	Chapter 12 - Figure 2 - Local and Wider Hydrological Area of Influence for Sub-Sections
5.12.1.3	APP-178	A		07/09/18	Chapter 12 - Figure 3 - Detailed Hydrological Features

Master Document List - Submissions Made to the Planning Inspectorate

Document	PINS Reference No & Hyper Link.	Version	Status	Submission Date	Document Title
5.12.1.4	APP-179	A		07/09/18	Chapter 12 - Figure 4 - Braint Topography
5.12.1.5	APP-180	A		07/09/18	Chapter 12 - Figure 5 - Tŷ Fodol Topography
5.12.1.6	APP-181	A		07/09/18	Chapter 12 - Figure 6 - Braint Fluvial Flood Mapping
5.12.1.7	APP-182	A		07/09/18	Chapter 12 - Figure 7 - Braint Surface Water Flood Risk
5.12.1.8	APP-183	A		07/09/18	Chapter 12 - Figure 8 - Afon Braint 0.1% +CC Flood Map
5.12.1.9	APP-184	A		07/09/18	Chapter 12 - Figure 9 - Order Limits Topography
5.12.1.10	APP-185	A		07/09/18	Chapter 12 - Figure 10 - Overhead Line Fluvial Flood Risk
5.12.1.11	APP-186	A		07/09/18	Chapter 12 - Figure 11 - Overhead Line Surface Water Hazard Mapping
5.12.1.12	APP-187	A		07/09/18	Chapter 12 - Figure 12 - Susceptibility to Groundwater Flooding
5.12.1.13	APP-188	A		07/09/18	Chapter 12 - Figure 13 - Pentir Topography
5.12.1.14	APP-189	A		07/09/18	Chapter 12 - Figure 14 - Groundwater Water Framework Directive Status
5.12.2.1	APP-190	A		07/09/18	Chapter 12 - Appendix 1 - Overarching Flood Consequences Assessment
5.12.2.2	APP-191	A		07/09/18	Chapter 12 - Appendix 2 - Pentir Substation Extension Flood Consequences Assessment
5.12.2.3	APP-192	A		07/09/18	Chapter 12 - Appendix 3 - Tunnel Head Houses and Cable Sealing End Compounds Flood Consequences Assessment
5.12.2.4	APP-193	A		07/09/18	Chapter 12 - Appendix 4 - Overhead Line Flood Consequences Assessment
5.12.2.5	APP-194	A		07/09/18	Chapter 12 - Appendix 5 - Water Framework Directive Assessment
5.12.2.6	APP-195	A		07/09/18	Chapter 12 - Appendix 6 - Designated Sites
5.12.2.7	APP-196	A		07/09/18	Chapter 12 - Appendix 7 - Local Planning Policy
5.13	APP-197	A		07/09/18	Chapter 13 - Traffic and Transport
5.13.1.1	APP-198	A		07/09/18	Chapter 13 - Figure 1 - Existing Main Traffic Routes
5.13.1.2	APP-199	A		07/09/18	Chapter 13 - Figure 2 - Proposed Construction Routes
5.13.1.3	APP-200	A		07/09/18	Chapter 13 - Figure 3 - Proposed Temporary Access Point Locations
5.13.1.4	APP-201	A		07/09/18	Chapter 13 - Figure 4 - Traffic Count Locations
5.13.1.5	APP-202	A		07/09/18	Chapter 13 - Figure 5 - Abnormal Indivisible Loads (AIL) Routes
5.13.1.6	APP-203	A		07/09/18	Chapter 13 - Figure 6 - Public Rights of Way (PROW)
5.13.1.7	APP-204	A		07/09/18	Chapter 13 - Figure 7 - Unnamed Roads
5.13.1.8	APP-205	A		07/09/18	Chapter 13 - Figure 8 - Highway Link References
5.13.1.9	APP-206	A		07/09/18	Chapter 13 - Figure 9 - Highway Link and Receptor Sensitivity Classification
5.13.1.10	APP-207	A		07/09/18	Chapter 13 - Figure 10 - Summary of Residual Effects - Severance
5.13.1.11	APP-208	A		07/09/18	Chapter 13 - Figure 11 - Summary of Residual Effects - Pedestrian Delay
5.13.1.12	APP-209	A		07/09/18	Chapter 13 - Figure 12 - Summary of Residual Effects - Pedestrian Amenity
5.13.1.13	APP-210	A		07/09/18	Chapter 13 - Figure 13 - Summary of Residual Effects - Fear and Intimidation
5.13.1.14	APP-211	A		07/09/18	Chapter 13 - Figure 14 - Summary of Residual Effects - Driver Delay
5.13.2.1_Part 1 of 2	APP-212	A		07/09/18	Chapter 13 - Appendix 1 - Transport Assessment
5.13.2.1_Part 2 of 2	APP-213	A		07/09/18	Chapter 13 - Appendix 1 - Transport Assessment
5.13.2.2	APP-214	A		07/09/18	Chapter 13 - Appendix 2 - Local Planning Policy
5.14	APP-215	A		07/09/18	Chapter 14 - Air Quality
5.14.1.1	APP-216	A		07/09/18	Chapter 14 - Figure 1 - Air Quality Construction Routes
5.14.1.2	APP-217	A		07/09/18	Chapter 14 - Figure 2 - Air Quality Monitoring Locations
5.14.1.3	APP-218	A		07/09/18	Chapter 14 - Figure 3 - Construction Dust Emissions Sensitive Receptors
5.14.1.4	APP-219	A		07/09/18	Chapter 14 - Figure 4 - Road Traffic and Emergency Generators Emissions Sensitive Receptors
5.14.1.5	APP-220	A		07/09/18	Chapter 14 - Figure 5 - Reported Air Quality Effects
5.14.2.1	APP-221	A		07/09/18	Chapter 14 - Appendix 1 - Local Planning Policy
5.14.2.2	APP-222	A		07/09/18	Chapter 14 - Appendix 2 - Construction Dust Assessment Method & Supporting Information
5.14.2.3	APP-223	A		07/09/18	Chapter 14 - Appendix 3 - Detailed Air Quality Modelling Assessment
5.15	APP-224	A		07/09/18	Chapter 15 - Construction Noise and Vibration
5.15.1.1	APP-225	A		07/09/18	Chapter 15 - Figure 1 - Baseline Noise Monitoring Locations and Receptor Locations

Master Document List - Submissions Made to the Planning Inspectorate

Document	PINS Reference No & Hyper Link.	Version	Status	Submission Date	Document Title
5.15.1.2	APP-226	A		07/09/18	Chapter 15 - Figure 2 - Study Areas for Construction Compounds and Substation Construction Works
5.15.1.3	APP-227	A		07/09/18	Chapter 15 - Figure 3 - Study Areas for Pylon Construction and Dismantling Works.
5.15.1.4	APP-228	A		07/09/18	Chapter 15 - Figure 4 - Study Area for Tunnelling Construction Compounds
5.15.1.5	APP-229	A		07/09/18	Chapter 15 - Figure 5 - Study Area for Underground Tunnelling Works
5.15.1.6	APP-230	A		07/09/18	Chapter 15 - Figure 6 - Study Areas for Access Tracks
5.15.1.7	APP-231	A		07/09/18	Chapter 15 - Figure 7 - Study Area for Construction Traffic Routes
5.15.2.1	APP-232	A		07/09/18	Chapter 15 - Appendix 1 - Local Planning Policy
5.15.2.2	APP-233	A		07/09/18	Chapter 15 - Appendix 2 - Baseline Sound Monitoring Report
5.15.2.3	APP-234	A		07/09/18	Chapter 15 - Appendix 3 - Baseline Sound Levels Used for Numerical Assessment of Effects
5.15.2.4	APP-235	A		07/09/18	Chapter 15 - Appendix 4 - Construction Noise and Vibration Model Inputs
5.15.2.5	APP-236	A		07/09/18	Chapter 15 - Appendix 5 - Assessment of Noise Effects from Works at Penmynydd Road Construction Compound
5.15.2.6	APP-237	A		07/09/18	Chapter 15 - Appendix 6 - Assessment of Noise Effects from Works at Pentir Construction Compound
5.15.2.7	APP-238	A		07/09/18	Chapter 15 - Appendix 7 - Assessment of Noise Effects at Pentir Substation Construction Compound
5.15.2.8	APP-239	A		07/09/18	Chapter 15 - Appendix 8 - Assessment of Noise Effects from Works at Pentir Substation
5.15.2.9	APP-240	A		07/09/18	Chapter 15 - Appendix 9 - Assessment of Noise and Vibration Effects from Construction of Access Tracks, Culverts and Bridges
5.15.2.10	APP-241	A		07/09/18	Chapter 15 - Appendix 10 - Assessment of Noise and Vibration Effects from Pylon Construction, Dismantling and Conductor Stringing
5.15.2.11	APP-242	A		07/09/18	Chapter 15 - Appendix 11 - Assessment of Vibration Effects from Pylon Construction
5.15.2.12	APP-243	A		07/09/18	Chapter 15 - Appendix 12 - Assessment of Noise Effects from Works within the Braint Construction Compound
5.15.2.13	APP-244	A		07/09/18	Chapter 15 - Appendix 13 - Assessment of Noise Effects from Works within the Tŷ Fodol Construction Compound
5.15.2.14	APP-245	A		07/09/18	Chapter 15 - Appendix 14 - Assessment of Vibration Effects from Underground Tunnelling Works
5.15.2.15	APP-246	A		07/09/18	Chapter 15 - Appendix 15 - Assessment of Noise Effects from Access Tracks used by Construction Vehicles
5.15.2.16	APP-247	A		07/09/18	Chapter 15 - Appendix 16 - Assessment of Noise Effects from Construction Traffic Routes used by Construction Vehicles
5.15.2.17	APP-248	A		07/09/18	Chapter 15 - Appendix 17 - Summary of Residual Noise and Vibration Effects from All Construction Activities
5.15.2.18	APP-249	A		07/09/18	Chapter 15 - Appendix 18 - Assessment of Cumulative Noise Effects from Traffic Routes used by Construction Traffic
5.16	APP-250	A		07/09/18	Chapter 16 - Operational Noise and Vibration
5.16.1.1	APP-251	A		07/09/18	Chapter 16 - Figure 1 - Option A & B Dry Noise
5.16.1.2	APP-252	A		07/09/18	Chapter 16 - Figure 2 - Option A & B Wet Noise
5.16.1.3	APP-253	A		07/09/18	Chapter 16 - Figure 3 - Option B Dry Noise
5.16.1.4	APP-254	A		07/09/18	Chapter 16 - Figure 4 - Option B Wet Noise
5.16.1.5	APP-255	A		07/09/18	Chapter 16 - Figure 5 - Tunnel Head House - Braint
5.16.1.6	APP-256	A		07/09/18	Chapter 16 - Figure 6 - Tunnel Head House - Tŷ Fodol (100% Realistic Worst Case)
5.16.1.7	APP-257	A		07/09/18	Chapter 16 - Figure 7 - Tunnel Head House - Tŷ Fodol (50% Normal Operating Conditions)
5.16.1.8	APP-258	A		07/09/18	Chapter 16 - Figure 8 - Pentir Substation
5.16.1.9	APP-259	A		07/09/18	Chapter 16 - Figure 9 - Operational Noise - Residual Effects
5.16.2.1	APP-260	A		07/09/18	Chapter 16 - Appendix 1 - Representative Baseline Area Map
5.16.2.2	APP-261	A		07/09/18	Chapter 16 - Appendix 2 - Local Planning Policy
5.16.2.3	APP-262	A		07/09/18	Chapter 16 - Appendix 3 - OHL Conductor Assessment Methodology Summary
5.16.2.4	APP-263	A		07/09/18	Chapter 16 - Appendix 4 - Taking into Account the Existing 400 kV Overhead Line
5.16.2.5	APP-264	A		07/09/18	Chapter 16 - Appendix 5 - Noise Model Output Assessment Tables
5.16.2.6	APP-265	A		07/09/18	Chapter 16 - Appendix 6 - TR(T)94 A Method for Assessing the Community Response to Overhead Line Noise
5.17	APP-266	A		07/09/18	Chapter 17 Socio Economics
5.17.1.1	APP-267	A		07/09/18	Chapter 17 - Figure 1 - Lower Super Output Areas
5.17.1.2	APP-268	A		07/09/18	Chapter 17 - Figure 2 - Welsh Indices of Multiple Deprivation
5.17.1.3	APP-269	A		07/09/18	Chapter 17 - Figure 3 - Travel to Work Area
5.17.1.4	APP-270	A		07/09/18	Chapter 17 - Figure 4 - Tourist Attractions and Recreational Resources
5.17.1.5	APP-271	A		07/09/18	Chapter 17 - Figure 5 - Commercial Receptors
5.17.1.6	APP-272	A		07/09/18	Chapter 17 - Figure 6 - Community Study Areas

Master Document List - Submissions Made to the Planning Inspectorate

Document	PINS Reference No & Hyper Link.	Version	Status	Submission Date	Document Title
5.17.1.7	APP-273	A		07/09/18	Chapter 17 - Figure 7 - Amenity Assessment
5.17.2.1	APP-274	A		07/09/18	Chapter 17 - Appendix 1 - Amenity Assessment
5.17.2.2	APP-275	A		07/09/18	Chapter 17 - Appendix 2 - Workforce Analysis Assumptions Log
5.17.2.3	APP-276	A		07/09/18	Chapter 17 - Appendix 3 - Visitor Survey Results
5.17.2.4	APP-277	A		07/09/18	Chapter 17 - Appendix 4 - Business Survey Results
5.18	APP-278	A		07/09/18	Chapter 18 Agriculture
5.18.1.1	APP-279	A		07/09/18	Chapter 18 - Figure 1 - Provisional Agricultural Land Classification
5.18.1.2	APP-280	A		07/09/18	Chapter 18 - Figure 2 - Agricultural Land Classification at the Pentir Substation Extension
5.18.1.3	APP-281	A		07/09/18	Chapter 18 - Figure 3 - Agricultural Land Classification at the Braint Tunnel Headhouse and Cable Sealing End Compound
5.18.1.4	APP-282	A		07/09/18	Chapter 18 - Figure 4 - Agricultural Land Classification at the Tŷ Fodol Tunnel Headhouse and Cable Sealing End Compound
5.18.1.5	APP-283	A		07/09/18	Chapter 18 - Figure 5 - Soil Associations in the Order Limits
5.18.2.1	APP-284	A		07/09/18	Chapter 18 - Appendix 1 - Soil Profiles, ALC Calculations and Land Holding Data
5.18.2.2	APP-285	A		07/09/18	Chapter 18 - Appendix 2 - Agriculture Consultation Correspondence
5.18.2.3	APP-286	A		07/09/18	Chapter 18 - Appendix 3 - Local Planning Policy
5.19	APP-287	A		07/09/18	Chapter 19 Intra-Project Effects
5.19.1.1	APP-288	A		07/09/18	Chapter 19 - Figure 1 - Residual Intra-Project Effects Construction
5.19.1.2	APP-289	A		07/09/18	Chapter 19 - Figure 1 - Residual Intra-Project Effects Operation
5.19.2.1	APP-290	A		07/09/18	Chapter 19 - Appendix 1 - Pre Screening Stage Assessment
5.19.2.2	APP-291	A		07/09/18	Chapter 19 - Appendix 2 - Stage 2 Screening Assessment
5.20	APP-292	A		07/09/18	Chapter 20 Inter-Project Effects
5.20.1.1	APP-293	A		07/09/18	Chapter 20 - Figure 1 - Indicative Development Locations Wylfa Newydd
5.20.1.2	APP-294	A		07/09/18	Chapter 20 - Figure 2 - Cumulative Developments
5.20.2.1	APP-295	A		07/09/18	Chapter 20 - Appendix 1 - Project Descriptions - Wylfa Newydd Power Station
5.20.2.2	APP-296	A		07/09/18	Chapter 20 - Appendix 2 - Project Descriptions
5.21	APP-297	A		07/09/18	Chapter 21 Statement of the Combined Effects with the Wider Works
5.21.1.1	APP-298	A		07/09/18	Chapter 21 - Figure 1 - Indicative Locations of Wider Works
5.22	APP-299	A		07/09/18	Document 22 Summary of Residual Effects
5.23	APP-300	A		07/09/18	Document 23 Habitat Regulations Assessment Report
5.23.1.1	APP-301	A		07/09/18	Document 23 - Figure 1 - Statutory Designated Sites Overview
5.23.1.2	APP-302	A		07/09/18	Document 23 - Figure 2 - Statutory Designated Sites Detailed
5.23.1.3	APP-303	A		07/09/18	Document 23 - Figure 3 - Corsydd Mon Anglesey Fens SAC & Ramsar
5.23.2.1	APP-304	A		07/09/18	Document 23 - Appendix 1 - Screening Matrices
5.23.2.2	APP-305	A		07/09/18	Document 23 - Appendix 2 - Integrity Matrices
5.23.2.3	APP-306	A		07/09/18	Document 23 - Appendix 3 - Qualifying Features And Conservation Objectives, Threats/Vulnerabilities Of Natura 2000 Sites
5.24	APP-307	A		07/09/18	Document 24 Statement of Statutory Nuisance
5.25	APP-308	A		07/09/18	Document 25 Electric and Magnetic Fields Report
5.26	APP-309	A		07/09/18	Document 26 Welsh Language Impact Assessment
5.26.1.1	APP-310	A		07/09/18	Document 26 - Figure 1 - Travel to Work Areas
5.26.2.1	APP-311	A		07/09/18	Document 26 - Appendix 1 - WLIA Baseline
5.27	APP-312	A		07/09/18	Document 27 Well-being Report
5.27.2.1	APP-313	A		07/09/18	Document 27 - Appendix 1 - Scoping Meeting Notes
5.27.2.2	APP-314	A		07/09/18	Document 27 - Appendix 2 - WHIASU Report
5.27.2.3	APP-315	A		07/09/18	Document 27 - Appendix 3 - List of Workshop Attendees
5.28	APP-316	A		07/09/18	Document 28 Schedule of Mitigation
5.28.2.1	APP-317	A		07/09/18	Document 28 - Appendix 1 - Legislation Compliance Audit
5.29_Part 1 of 6	APP-318	A		07/09/18	Photomontages
5.29_Part 2 of 6	APP-319	A		07/09/18	Photomontages

Master Document List - Submissions Made to the Planning Inspectorate					
Document	PINS Reference No & Hyper Link.	Version	Status	Submission Date	Document Title
5.29_Part 3 of 6	APP-320	A		07/09/18	Photomontages
5.29_Part 4 of 6	APP-321	A		07/09/18	Photomontages
5.29_Part 5 of 6	APP-322	A		07/09/18	Photomontages
5.29_Part 6 of 6	APP-323	A		07/09/18	Photomontages
5.30	APP-324	A		07/09/18	Document 30 Arboricultural Impact Assessment
Volume 6 Consultation Report					
6.1	APP-325	A		07/09/18	Consultation Report
6.2_Part 1 of 3	APP-326	A		07/09/18	Consultation Report Appendices 1 - 8
6.2_Part 2 of 3	APP-327	A		07/09/18	Consultation Report Appendices 9 - 21
6.2_Part 3 of 3	APP-328	A		07/09/18	Consultation Report Appendices 22 - 41
Volume 7 Other Reports					
7.1	APP-329	A		07/09/18	Need Case
7.2	APP-330	A		07/09/18	Strategic Options Report
7.3	APP-331	A		07/09/18	History of the Project
7.4	APP-332	A		07/09/18	Construction Environmental Management Plan (CEMP)
7.4.1.1	APP-333	A		07/09/18	Document 7.4 - Figure 1 - Reinstatement Plans
7.4.2.1	APP-334	A		07/09/18	Document 7.4 Appendix 1 - Schedule of Environmental Commitments
7.5	APP-335	A		07/09/18	Outline Construction Traffic Management Plan
7.6	APP-336	A		07/09/18	Public Rights of Way Management Plan
7.7	APP-337	A		07/09/18	Biodiversity Mitigation Strategy
7.8	APP-338	A		07/09/18	Archaeological Strategy
7.9	APP-339	A		07/09/18	Noise & Vibration Management Plan
7.10	APP-340	A		07/09/18	Outline Soil Management Plan
7.11	APP-341	A		07/09/18	Outline Waste Management Plan
7.12	APP-342	A		07/09/18	Outline Materials Management Plan
7.13	APP-343	A		07/09/18	Enhancement Strategy
7.14	APP-344	A		07/09/18	Planning Statement
7.15	APP-345	A		07/09/18	Details of Other Consents and Licences
7.16	APP-346	A		07/09/18	Design and Access Statement
7.17_Part 1 of 2	APP-347	A		07/09/18	Design Report
7.17_Part 2 of 2	APP-348	A		07/09/18	Design Report
7.18	APP-349	A		07/09/18	Back-Check of Wylfa-Pentir Design Decisions
7.19	APP-350	A		07/09/18	Design Guide
Volume 8 Welsh Translation					
8.1	APP-351	A		07/09/18	Dogfen Lywio
8.2	APP-352	A		07/09/18	Memorandwm Esboniadol
8.3	APP-353	A		07/09/18	Datganiad o Resymau
8.4	APP-354	A		07/09/18	Datganiad Cyllido
8.5	APP-355	A		07/09/18	Dogfen Gyfarwyddyd Cynllunio
8.6	APP-356	A		07/09/18	Crynodeb Annhechnegol o'r Datganiad Amgylcheddol
8.7	APP-357	A		07/09/18	Asesiad o'r Effaith ar yr Iaith Gymraeg
8.8	APP-358	A		07/09/18	Crynodeb o'r Adroddiad Ymgynghori
8.9	APP-359	A		07/09/18	Crynodeb o'r Datganiad Cynllunio
8.10	APP-360	A		07/09/18	Crynodeb o'r Adroddiad Dylunio
8.11	APP-361	A		07/09/18	Hanes y Prosiect
Volume 9 Reference Documents					

Master Document List - Submissions Made to the Planning Inspectorate

Document	PINS Reference No & Hyper Link.	Version	Status	Submission Date	Document Title
9.1	APP-362	A		07/09/18	Wylfa to Pentir Overhead Electricity Transmission Line – Route Corridor Identification Report (Oct 2012)
9.2	APP-363	A		07/09/18	Wylfa to Pentir Preferred Route Corridor Selection Report (Oct 2015)
9.3	APP-364	A		07/09/18	Wylfa to Pentir Route Options Report (Oct 2015)
9.4	APP-365	A		07/09/18	Preferred Route Option Selection Report Wylfa to the Menai Crossing Area (Sep 2016)
9.5	APP-366	A		07/09/18	Draft Route Alignment Report Wylfa to the Menai Crossing Area (Sep 2016)
9.6	APP-367	A		07/09/18	Menai Strait Crossing Report (Sep 2016))
9.7.1	APP-368	A		07/09/18	Historic Need Case 2012
9.7.2	APP-369	A		07/09/18	Historic Need Case 2015
9.7.3	APP-370	A		07/09/18	Historic Need Case 2016
9.8.1	APP-371	A		07/09/18	Historic SoR 2012
9.8.2	APP-372	A		07/09/18	Historic SoR 2015
9.8.3	APP-373	A		07/09/18	Historic SoR 2016
Volume 10 Post Application and Examination Submissions					
10.1	*****	A		03/12/18	Covering Letter - Certificates of Compliance
10.2	*****	A		03/12/18	Schedule of Variation to the Book of Reference