

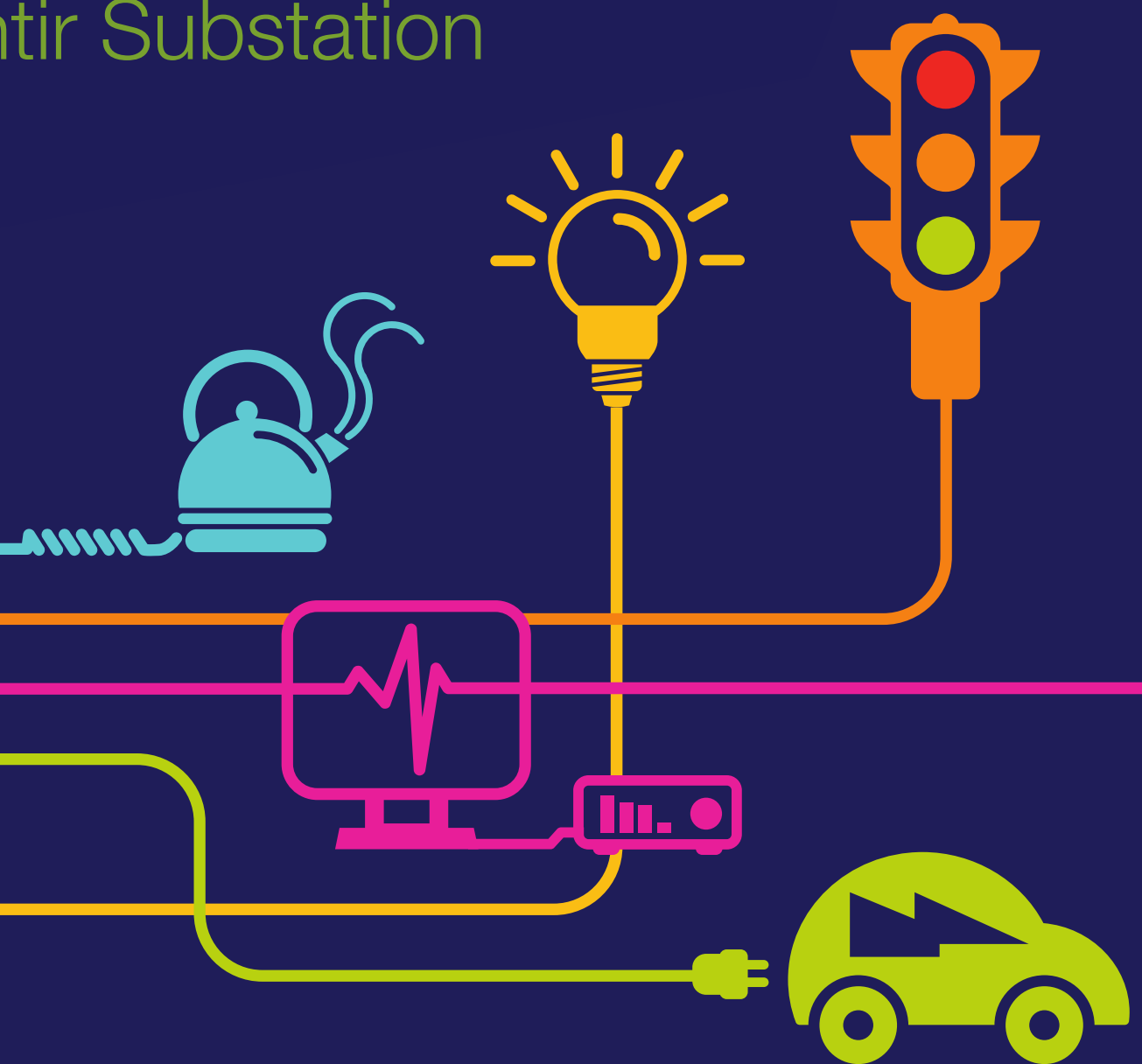
DOCUMENT 5.15.2.7

Assessment of Noise Effects at Pentir Substation Construction Compound

Chapter 15 – Appendix 7

National Grid (North Wales Connection Project)

*Regulation 5(2)(a) including (l) and (m) of the Infrastructure Planning
(Applications: Prescribed Forms and Procedure) Regulations 2009*



nationalgrid

North Wales Connection Project

Volume 5

Document 5.15.2.7 Appendix 15.7 Assessment of Noise Effects at Pentir Substation Construction Compound

National Grid
National Grid House
Warwick Technology Park
Gallows Hill
Warwick
CV34 6DA

Final September 2018

Page intentionally blank

Document Control			
Document Properties			
Organisation	RPS		
Author	Susan Hirst		
Approved by	Phil Evans		
Title	Environmental Statement Appendix 15.7		
Document Reference	Document 5.15.2.7		
Version History			
Date	Version	Status	Description/Changes
September 2018	Rev A	Final	Final for submission

Page intentionally blank

Contents

1. Preparation and Installation of Construction Compound	1
2. General Activities	3

Page intentionally blank

1. Preparation and Installation of Construction Compound

1.1 BS 5228 CALC

Preparation and Installation of Construction Compound					
Receptor	Receptor Classification	Receptor Sensitivity	Distance from Plant to Receptor (m)	BS 5228 Calc	
				A-Weighted Sound Pressure Level, $L_{Aeq,T}$ dB (at 10 m)	Predicted level of plant at receptor $L_{Aeq,T}$ dB
R5/09355	Detached	Medium	200	88	59
R5/09356	Caravan	Medium	200	88	59
R5/08715	Detached	Medium	430	88	52
R5/08574	Detached	Medium	430	88	52
C5/13713	Holiday Let/Accommodation/Short-Term Let Other Than CH01	Medium	450	88	51

1.2 DAYTIME

Preparation and Installation of Construction Compound						
Receptor	Receptor Classification	Receptor Sensitivity	Daytime			
			Pre Construction Ambient Noise Level, $L_{Aeq,T}$ dB	Log Sum of Pre Construction Ambient Noise and Predicted Noise Level, $L_{Aeq,T}$ dB	Exceedance of Pre Construction Noise, dB	Magnitude of Effect
R5/09355	Detached	Medium	47	59	12	Very Low
R5/09356	Caravan	Medium	47	59	12	Very Low
R5/08715	Detached	Medium	47	53	6	Very Low
R5/08574	Detached	Medium	47	53	6	Very Low
C5/13713	Holiday Let/Accommodation/Short-Term Let Other Than CH01	Medium	47	53	6	Very Low

2. General Activities

1.3 BS 5228 CALC

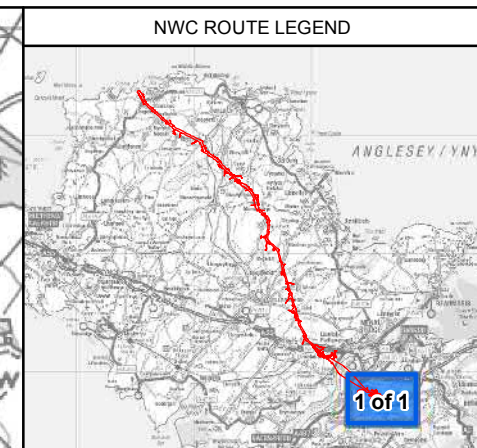
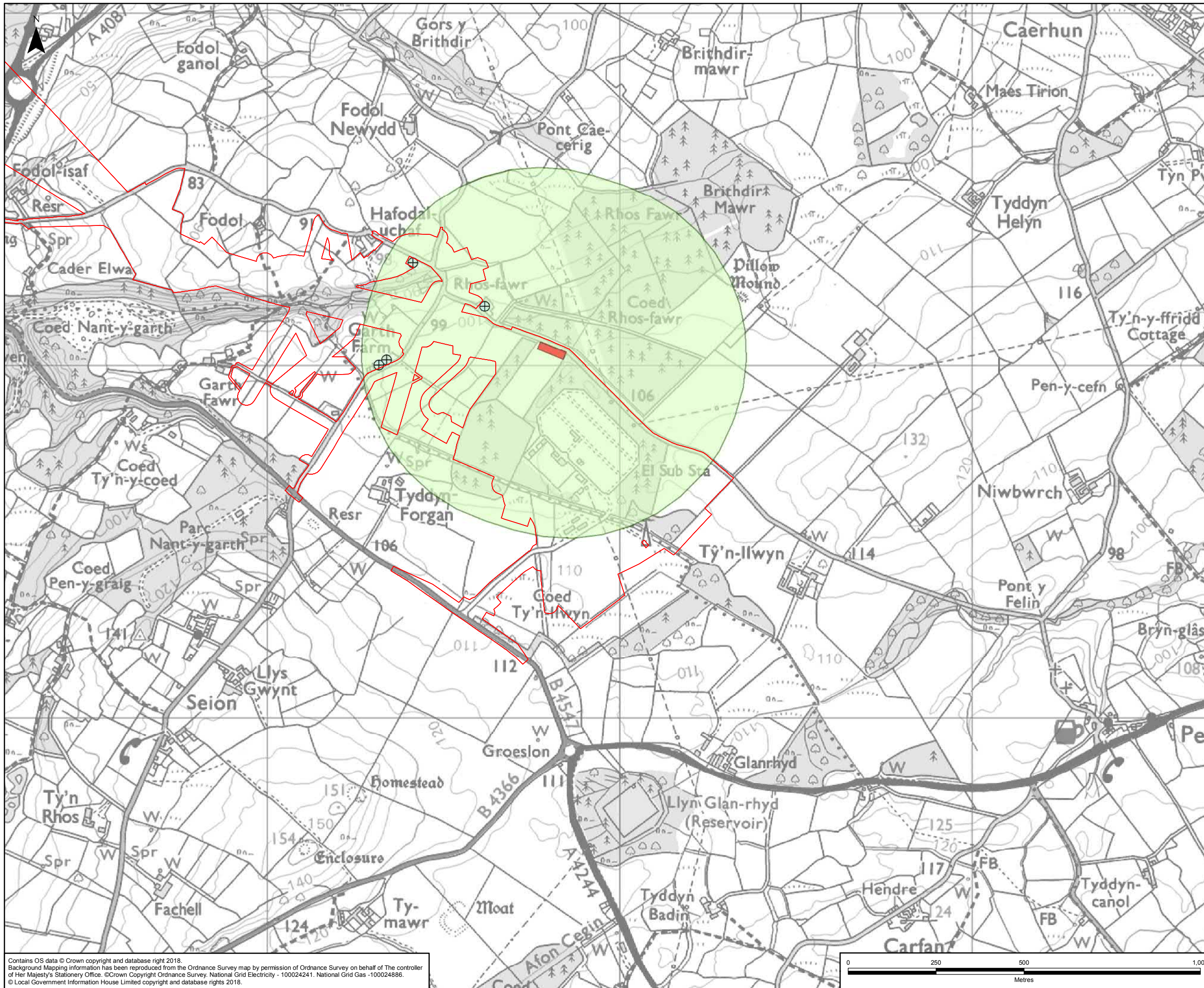
General Activities within Construction Compound					
Receptor	Receptor Classification	Receptor Sensitivity	Distance from Plant to Receptor (m)	BS 5228 Calc	
				A-Weighted Sound Pressure Level, $L_{Aeq,T}$ dB (at 10 m)	Predicted level of plant at receptor $L_{Aeq,T}$ dB
R5/09355	Detached	Medium	200	80	51
R5/09356	Caravan	Medium	200	80	51
R5/08715	Detached	Medium	430	80	43
R5/08574	Detached	Medium	430	80	43
C5/13713	Holiday Let/Accommodation/ Short-Term Let Other Than CH01	Medium	450	80	43

1.4 DAYTIME

General Activities within Construction Compound						
Receptor	Receptor Classification	Receptor Sensitivity	Daytime			
			Pre Construction Ambient Noise Level, $L_{Aeq,T}$ dB	Log Sum of Pre Construction Ambient Noise and Predicted Noise Level, $L_{Aeq,T}$ dB	Exceedance of Pre Construction Noise, dB	Magnitude of Effect
R5/09355	Detached	Medium	47	52	5	Very Low
R5/09356	Caravan	Medium	47	52	5	Very Low
R5/08715	Detached	Medium	47	49	2	Very Low
R5/08574	Detached	Medium	47	49	2	Very Low
C5/13713	Holiday Let/Accommodation/ Short-Term Let Other Than CH01	Medium	47	48	1	Very Low

Figures

Page intentionally blank



LEGEND

- ORDER LIMITS
- SECTION OUTLINES

SIGNIFICANCE OF EFFECT:

- + NEGLIGIBLE
- CONSTRUCTION COMPOUND
- NOISE STUDY AREA: PENTIR SUBSTATION

A	10/08/2018	ENVIRONMENTAL STATEMENT	JF	SH	PE
Rev	Date	Description	GIS	Chk	App

nationalgrid					
Scheme: NORTH WALES CONNECTION PROJECT					
Document Number: 5.15.2.7					
Document Title: FIGURE A SIGNIFICANCE OF EFFECTS FROM WORKS AT PENTIR SUBSTATION CONSTRUCTION COMPOUND SECTION F					
Creator:	Date:	Checker:	Date:	Approver:	Date:
JF	10/08/2018	SH	10/08/2018	PE	10/08/2018
Document Type:	Scale:	Format:	Sheets:	Rev:	
FIGURE	1:10,000	A3	1 of 1	A	

Contains OS data © Crown copyright and database right 2018.
Background Mapping Information has been reproduced from the Ordnance Survey map by permission of Ordnance Survey on behalf of The controller of Her Majesty's Stationery Office. © Crown Copyright Ordnance Survey, National Grid Electricity - 100024241. National Grid Gas - 100024886.
© Local Government Information House Limited copyright and database rights 2018.

