

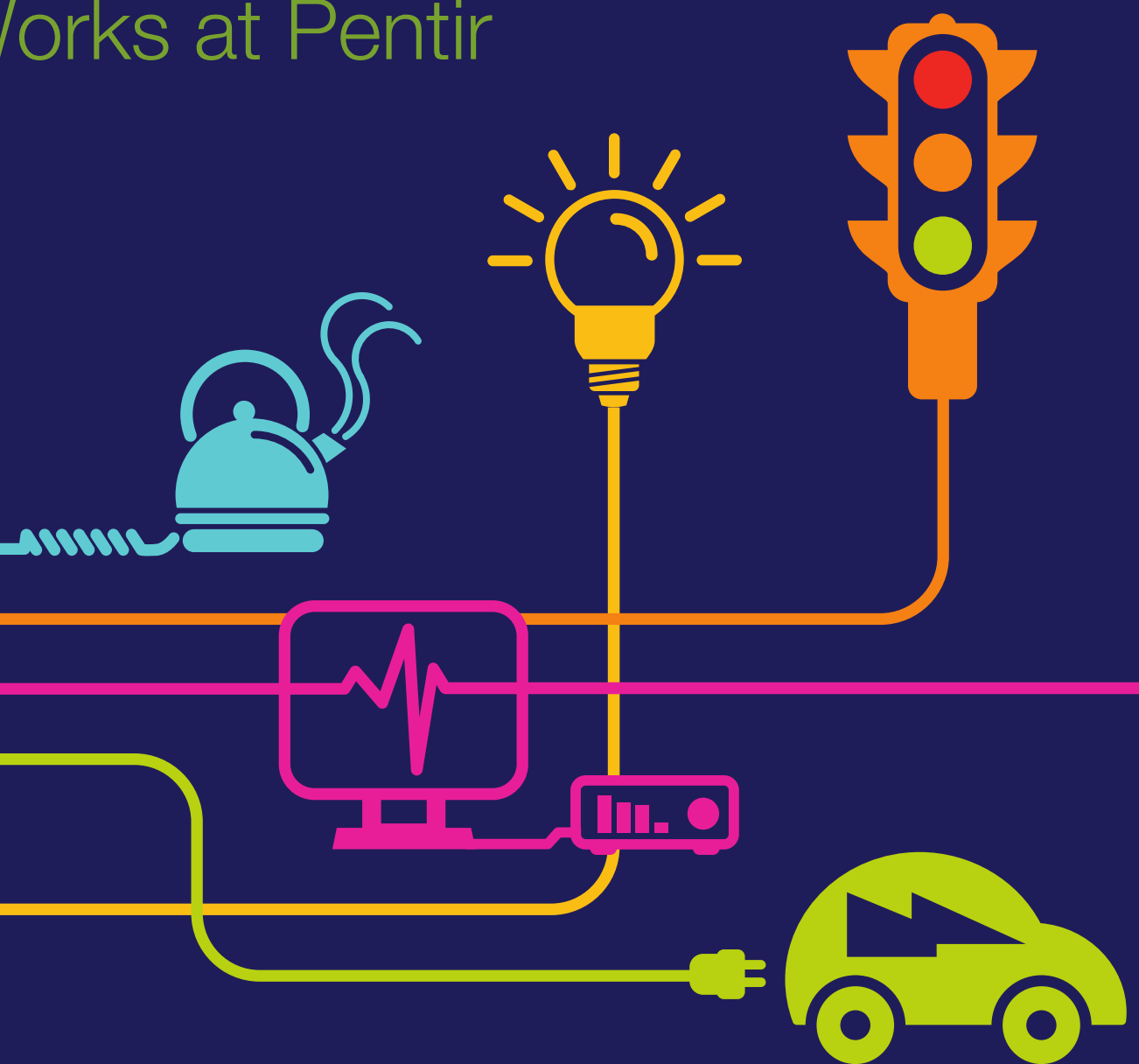
DOCUMENT 5.15.2.6

Assessment of Noise Effects from Works at Pentir Construction Compound

Chapter 15 – Appendix 6

National Grid (North Wales Connection Project)

Regulation 5(2)(a) including (l) and (m) of the Infrastructure Planning (Applications: Prescribed Forms and Procedure) Regulations 2009



nationalgrid

North Wales Connection Project

Volume 5

Document 5.15.2.6 Appendix 15.6 Assessment of Noise Effects from Works at Pentir Construction Compound

National Grid
National Grid House
Warwick Technology Park
Gallows Hill
Warwick
CV34 6DA

Final September 2018

Page intentionally blank

Document Control			
Document Properties			
Organisation	RPS		
Author	Susan Hirst		
Approved by	Phil Evans		
Title	Environmental Statement Appendix 15.6		
Document Reference	Document 5.15.2.6		
Version History			
Date	Version	Status	Description/Changes
September 2018	Rev A	Final	Final for submission

Page intentionally blank

Contents

1 Preparation and Installation of Construction Compound

1.1	BS 5228 Calc	1
1.2	Daytime	2
1.3	Weekend	3

2. General Activities

1.4	BS 5228 Calc	4
1.5	Daytime	5
1.6	Weekend	6

Figures

1

Page intentionally blank

1 Preparation and Installation of Construction Compound

1.1 BS 5228 CALC

Preparation and Installation of Construction Compound					
Receptor	Receptor Classification	Receptor Sensitivity	Distance from Plant to Receptor (m)	BS 5228 Calc	
				A-Weighted Sound Pressure Level, $L_{Aeq,T}$ dB (at 10 m)	Predicted level of plant at receptor $L_{Aeq,T}$ dB
C5/01325	Restaurant / Cafeteria	Low	447	88	52
R5/10768	Caravan	Medium	536	88	50
R5/08539	Detached	Medium	539	88	50
R5/08540	Caravan	Medium	539	88	50
R5/08541	Semi-Detached	Medium	539	88	50

1.2 DAYTIME

Preparation and Installation of Construction Compound						
Receptor	Receptor Classification	Receptor Sensitivity	Daytime			
			Pre Construction Ambient Noise Level, $L_{Aeq,T}$ dB	Log Sum of Pre Construction Ambient Noise and Predicted Noise Level, $L_{Aeq,T}$ dB	Exceedance of Pre Construction Noise, dB	Magnitude of Effect
C5/01325	Restaurant / Cafeteria	Low	49	54	5	Very Low
R5/10768	Caravan	Medium	47	52	5	Very Low
R5/08539	Detached	Medium	47	52	5	Very Low
R5/08540	Caravan	Medium	47	52	5	Very Low
R5/08541	Semi-Detached	Medium	47	52	5	Very Low

1.3 WEEKEND

Preparation and Installation of Construction Compound						
Receptor	Receptor Classification	Receptor Sensitivity	Weekend			
			Pre Construction Ambient Noise Level, $L_{Aeq,T}$ dB	Log Sum of Pre Construction Ambient Noise and Predicted Noise Level, $L_{Aeq,T}$ dB	Exceedance of Pre Construction Noise, dB	Magnitude of Effect
C5/01325	Restaurant / Cafeteria	Low	45	53	8	Low
R5/10768	Caravan	Medium	46	51	5	Low
R5/08539	Detached	Medium	44	51	7	Low
R5/08540	Caravan	Medium	44	51	7	Low
R5/08541	Semi-Detached	Medium	44	51	7	Low

2. General Activities

1.4 BS 5228 CALC

General Activities					
Receptor	Receptor Classification	Receptor Sensitivity	Distance from Plant to Receptor (m)	BS 5228 Calc	
				A-Weighted Sound Pressure Level, $L_{Aeq,T}$ dB (at 10 m)	Predicted level of plant at receptor $L_{Aeq,T}$ dB
C5/01325	Restaurant / Cafeteria	Low	447	80.0	44
R5/10768	Caravan	Medium	536	80.0	42
R5/08539	Detached	Medium	539	80.0	42
R5/08540	Caravan	Medium	539	80.0	42
R5/08541	Semi-Detached	Medium	539	80.0	42

1.5 DAYTIME

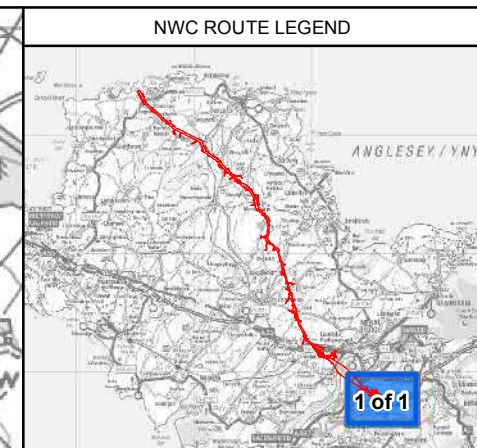
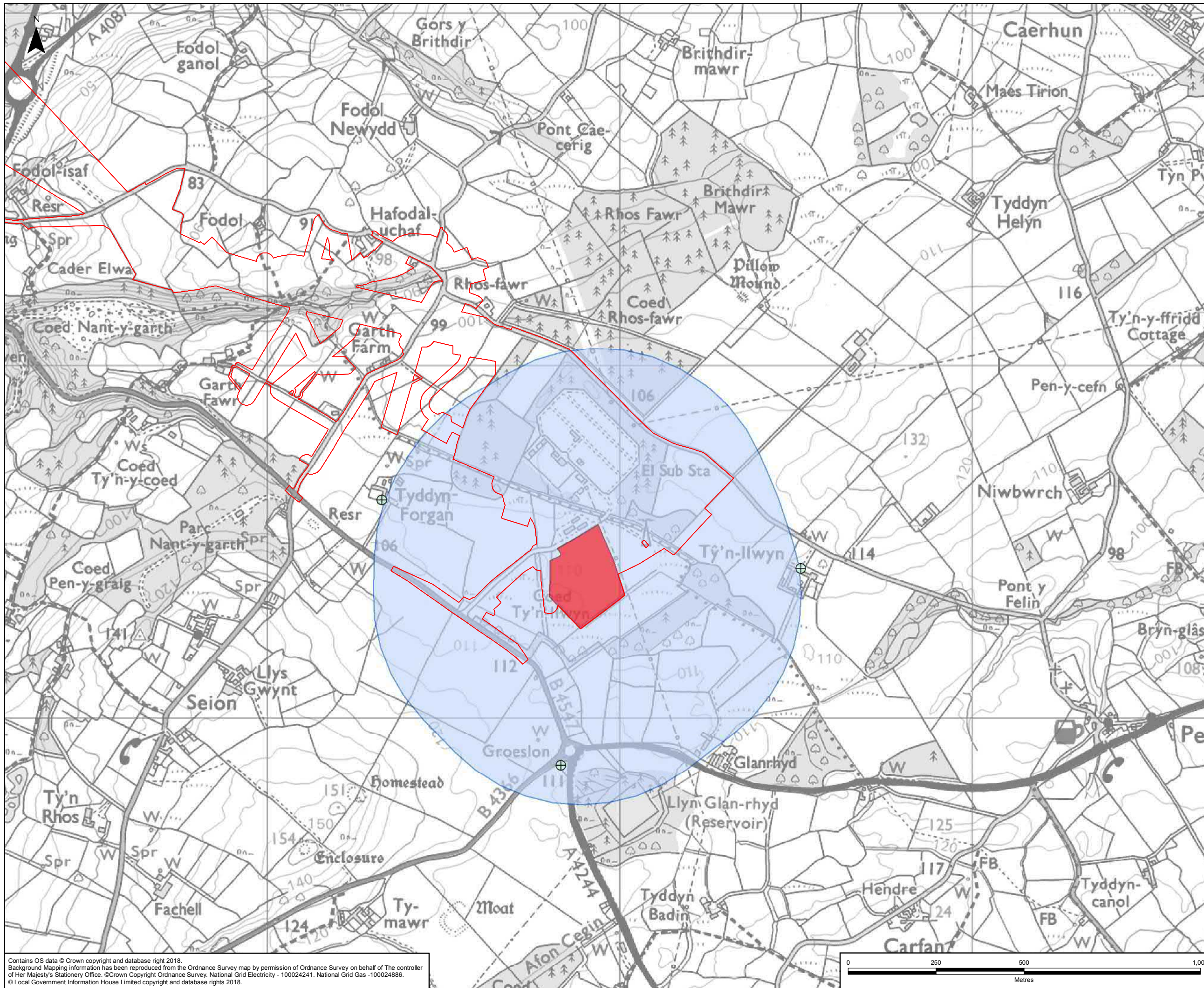
General Activities						
Receptor	Receptor Classification	Receptor Sensitivity	Daytime			
			Pre Construction Ambient Noise Level, $L_{Aeq,T}$ dB	Log Sum of Pre Construction Ambient Noise and Predicted Noise Level, $L_{Aeq,T}$ dB	Exceedance of Pre Construction Noise, dB	Magnitude of Effect
C5/01325	Restaurant / Cafeteria	Low	49	50	1	Very Low
R5/10768	Caravan	Medium	47	48	1	Very Low
R5/08539	Detached	Medium	47	48	1	Very Low
R5/08540	Caravan	Medium	47	48	1	Very Low
R5/08541	Semi-Detached	Medium	47	48	1	Very Low

1.6 WEEKEND

General Activities						
Receiver	Receptor Classification	Receptor Sensitivity	Weekend			
			Pre Construction Ambient Noise Level, $L_{Aeq,T}$ dB	Log Sum of Pre Construction Ambient Noise and Predicted Noise Level, $L_{Aeq,T}$ dB	Exceedance of Pre Construction Noise, dB	Magnitude of Effect
C5/01325	Restaurant / Cafeteria	Low	45	47	2	Very Low
R5/10768	Caravan	Medium	46	47	1	Very Low
R5/08539	Detached	Medium	44	46	2	Very Low
R5/08540	Caravan	Medium	44	46	2	Very Low
R5/08541	Semi-Detached	Medium	44	46	2	Very Low

Figures

Page intentionally blank



LEGEND

- ORDER LIMITS
- SECTION OUTLINES

SIGNIFICANCE OF EFFECT:

- ⊕ NEGLIGIBLE
- CONSTRUCTION COMPOUND
- NOISE STUDY AREA: PENTIR CONSTRUCTION COMPOUND

A	10/08/2018	ENVIRONMENTAL STATEMENT	JF	SH	PE
Rev	Date	Description	GIS	Chk	App

nationalgrid

Scheme: NORTH WALES CONNECTION PROJECT

Document Number: 5.15.2.6

Document Title: FIGURE A
SIGNIFICANCE OF EFFECTS FROM WORKS AT PENTIR
CONSTRUCTION COMPOUND
SECTION F

Creator:	Date:	Checker:	Date:	Approver:	Date:
JF	10/08/2018	SH	10/08/2018	PE	10/08/2018
Document Type:	Scale:	Format:	Sheets:	Rev:	
FIGURE	1:10,000	A3	1 of 1	A	

Contains OS data © Crown copyright and database right 2018.
Background Mapping Information has been reproduced from the Ordnance Survey map by permission of Ordnance Survey on behalf of The controller of Her Majesty's Stationery Office. © Crown Copyright Ordnance Survey, National Grid Electricity - 100024241. National Grid Gas - 100024886.
© Local Government Information House Limited copyright and database rights 2018.

