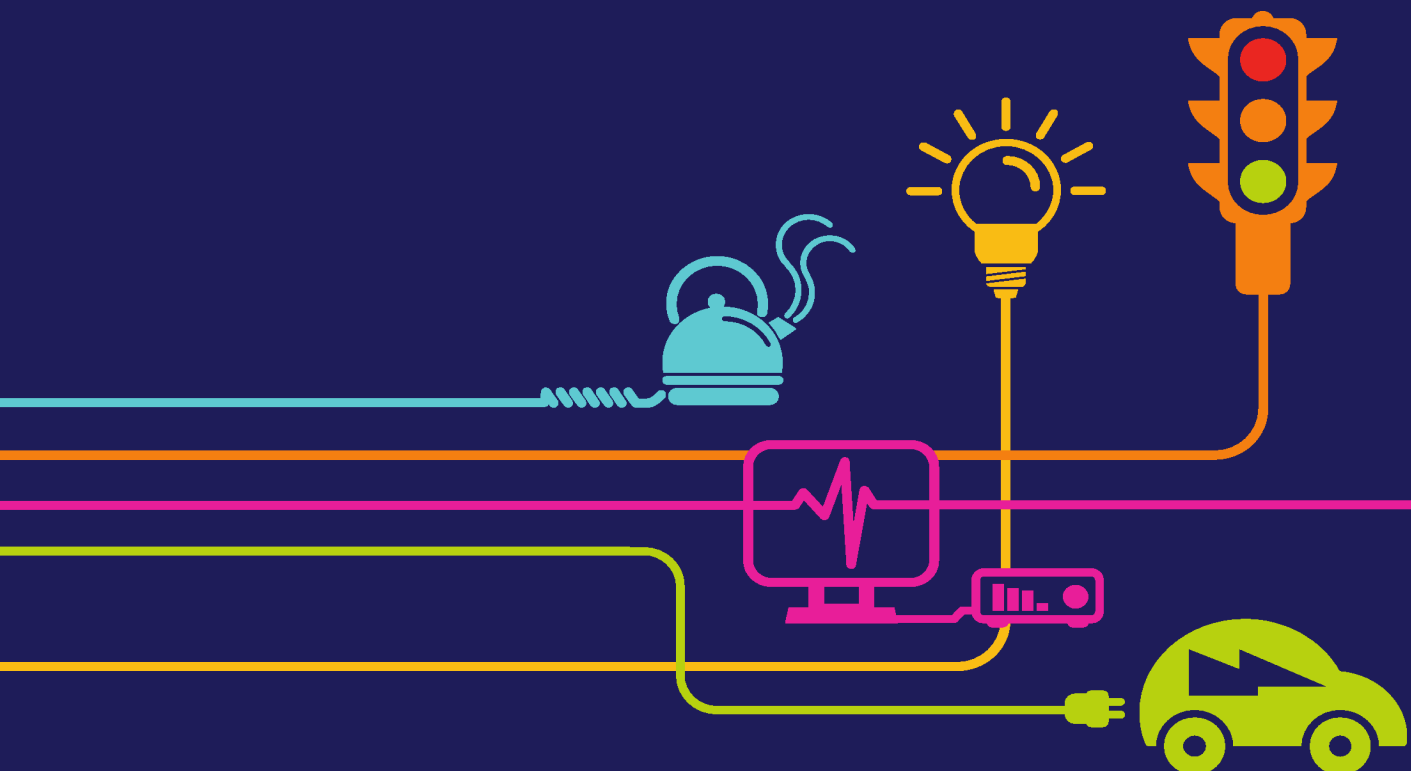


## Local Planning Policy

### Chapter 15 – Appendix 1

National Grid (North Wales Connection Project)

*Regulation 5(2)(a) including (l) and (m) of the Infrastructure Planning (Applications: Prescribed Forms and Procedure) Regulations 2009*





nationalgrid

---

## **North Wales Connection Project**

### **Volume 5**

### **Document 5.15.2.1 Appendix 15.1 Local Planning Policy**

National Grid  
National Grid House  
Warwick Technology Park  
Gallows Hill  
Warwick  
CV34 6DA

Final September 2018

*Page intentionally blank*

<b>Document Control</b>			
<b>Document Properties</b>			
<b>Organisation</b>	RPS		
<b>Author</b>	Susan Hirst		
<b>Approved by</b>	Phil Evans		
<b>Title</b>	Appendix 15.1 – Local Planning Policy – Construction Noise and Vibration		
<b>Document Reference</b>	Document 5.15.2.1		
<b>Version History</b>			
<b>Date</b>	<b>Version</b>	<b>Status</b>	<b>Description/Changes</b>
September 2018	Rev A	Final	Final for submission

*Page intentionally blank*

## **Contents**

<b>1</b>	<b>Local Planning Policy</b>	<b>1</b>
1.1	Joint Local Development Plan	1

*Page intentionally blank*



# 1 Local Planning Policy

## 1.1 ANGLESEY AND GWYNEDD JOINT LOCAL DEVELOPMENT PLAN

- 1.1.1 Local planning policy is provided within the Anglesey and Gwynedd Joint Local Development Plan (JLDP). The relevant policies have been considered in relation to the assessment of construction noise and vibration of the Proposed Development. Table 15.2.1 provides a summary of relevant policies.

*Page intentionally blank*

Table 15.2.1 Joint Local Development Plan Policies				
Policy /Number	Name	Policy	Where this is covered in the ES	Compliance Points
6.2 SUSTAINABLE LIVING				
SUSTAINABLE DEVELOPMENT AND CLIMATE CHANGE				
Policy PCYFF2: Development Criteria		<p><i>[...] Additionally, planning permission will be refused where the proposed development would have an unacceptable adverse impact on:</i></p> <p><i>[...]</i></p> <p><i>11. The health, safety or amenity of occupiers of local residences, other land and property uses or characteristics of the locality due to increased activity, disturbance, vibration, noise, dust, fumes, litter, drainage, light pollution, or other forms of pollution or nuisance;</i></p>	<p>The potential noise and vibration effects from the Proposed Development with respect to amenity of occupiers of local residences, other land and property uses or characteristics of the locality is addressed in 'Section 9 mitigation and residual effects'.</p>	<p>The ES demonstrates that potentially significant adverse effects would be minimised using Best Practical Means (BPM).</p>