

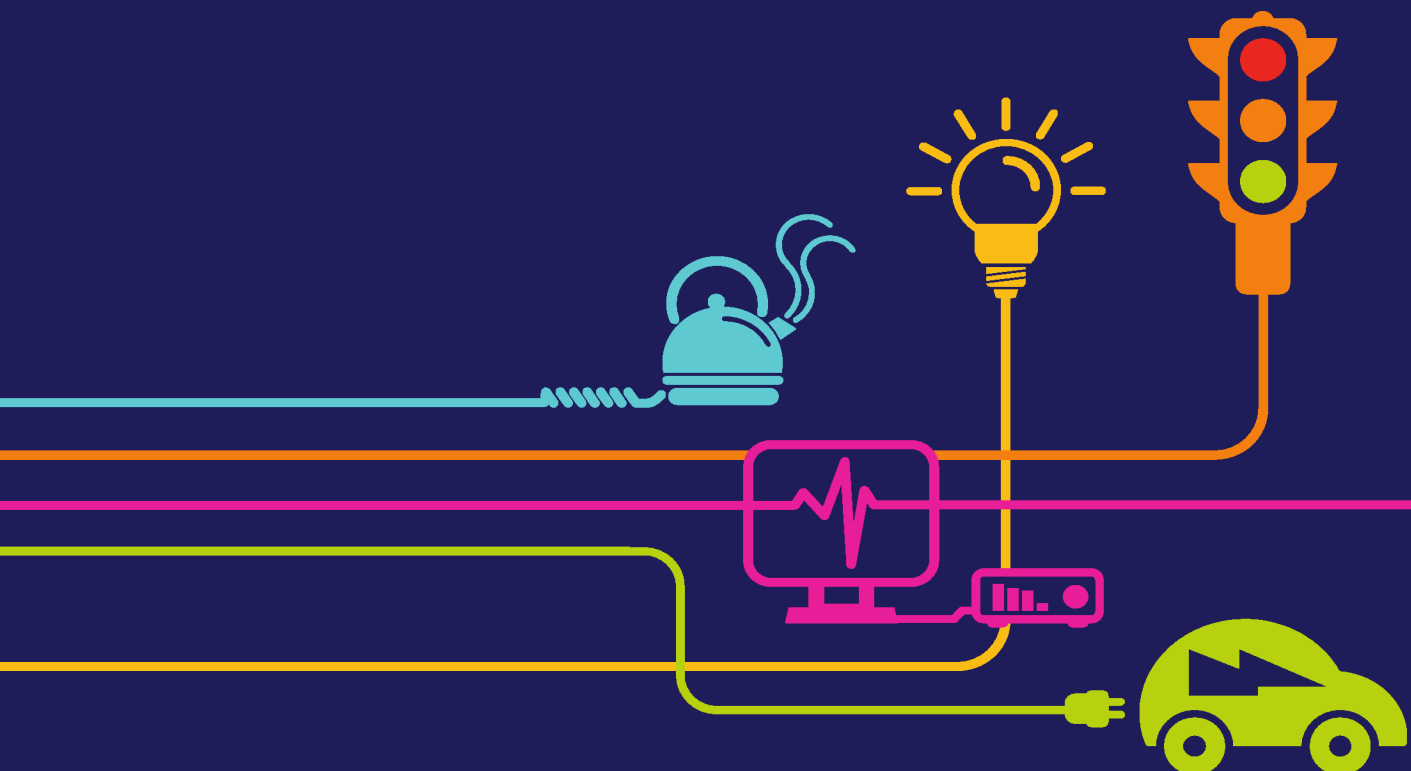
DOCUMENT 5.9.2.1

# Local Planning Policy

## Chapter 9 – Appendix 1

National Grid (North Wales Connection Project)

*Regulation 5(2)(a) including (l) and (m) of the Infrastructure Planning (Applications: Prescribed Forms and Procedure) Regulations 2009*





nationalgrid

---

# **North Wales Connection Project**

## **Volume 5**

### **Document 5.9.2.1 Appendix 9.1 Local Planning Policy**

National Grid  
National Grid House  
Warwick Technology Park  
Gallows Hill  
Warwick  
CV34 6DA

Final September 2018

*Page intentionally blank*

<b>Document Control</b>			
<b>Document Properties</b>			
<b>Organisation</b>	AECOM		
<b>Author</b>	Pamela Swallow, Lisa Rigby		
<b>Approved by</b>	Nicola Lewis		
<b>Title</b>	Appendix 9.1 Local Planning Policy		
<b>Document Reference</b>	Document 5.9.2.1		
<b>Version History</b>			
<b>Date</b>	<b>Version</b>	<b>Status</b>	<b>Description/Changes</b>
September 2018	Rev A	Final	Final for submission

*Page intentionally blank*

## **Contents**

<b>1</b>	<b>Local Planning Policy</b>	<b>1</b>
----------	------------------------------	----------

*Page intentionally blank*



# 1 Local Planning Policy

## 1.1 INTRODUCTION

1.1.1 This section provides the local planning policies relevant to Chapter 9, Ecology and Nature Conservation.

## 1.2 LOCAL PLANNING POLICY

1.2.1 The Joint Local Development Plan (JLDP) for Anglesey and Gwynedd (adopted July 2017) superseded the documents listed in Table 1

Table 1 Plans and Interim Policies superseded by Joint Local Development Plan (Anglesey and Gwynedd)	
Isle of Anglesey County Council	Gwynedd Council
Gwynedd Structure Plan (1993)	Gwynedd Unitary Development Plan (2009)
Anglesey Local Plan (1996)	
Anglesey Unitary Development Plan (stopped) (2005)	
Interim Planning Policy: Large Sites (2011)	
Interim Planning Policy: Rural Clusters (2011)	

Sources:

Gwynedd Council: <https://www.gwynedd.gov.uk/en/Council/Strategies-and-policies/Environment-and-planning/Planning-policy/Joint-Local-Development-Plan/Joint-Local-Development-Plan.aspx>.

Isle of Anglesey County Council: <http://www.anglesey.gov.uk/planning-and-waste/planning-policy/joint-local-development-plan-anglesey-and-gwynedd/>

1.2.2 Table 2 provides all of the policies contained within the JLDP relevant to Ecology and Nature Conservation.

<b>Table 2 Joint Local Development Plan (Anglesey and Gwynedd) (adopted July 2017)</b>			
<b>Policy Name/Number</b>	<b>Policy Description</b>	<b>Where this is covered in the ES</b>	<b>Compliance Points</b>
Strategic Policy PS19: Conserving and where appropriate enhancing the natural environment	<p>The Councils will manage development so as to conserve and where appropriate enhance the Plan area's distinctive natural environment, countryside and coastline, and proposals that have a significant adverse effect on them will be refused unless the need for and benefits of the development in that location clearly outweighs the value of the site or area and national policy protection for that site and area in question. When determining a planning application, consideration will need to be given to the following:</p> <ol style="list-style-type: none"> <li>1. safeguard the Plan area's habitats and species, geology, history, the coastline and landscapes;</li> <li>2. protect or where appropriate enhance sites of international, national, regional and local importance and, where appropriate, their settings in line with National Policy;</li> <li>3. have appropriate regard to the relative significance of international, national or local designations in considering the weight to be attached to acknowledged interests, ensuring that any international or national responsibilities and obligations are fully met in accordance with National Policy;</li> <li>4. protect or enhance biodiversity within the Plan area and enhance and/or restore networks of natural habitats in accordance with the Local Biodiversity Action Plans and Policy AMG 5;</li> </ol>	<p>Chapter 9, Ecology and Nature Conservation assessment (<b>Document 5.9</b>).</p> <p>Biodiversity Mitigation Strategy (<b>Document 7.7</b>).</p> <p>Enhancement Strategy (<b>Document 7.13</b>).</p>	<p>Direct changes and/or loss of sites and species of international, national, regional and local importance are assessed.</p> <p>Opportunities to protect and enhance biodiversity through the development are considered.</p>

Table 2 Joint Local Development Plan (Anglesey and Gwynedd) (adopted July 2017)			
Policy Name/Number	Policy Description	Where this is covered in the ES	Compliance Points
	<p>5. protect or enhance biodiversity through networks of green/ blue infrastructure;</p> <p>6. safeguard internationally, nationally and locally protected species;</p> <p>7. protect, retain or enhance the local character and distinctiveness of the individual Landscape Character Areas (in line with Policy AMG 2) and Seascape Character Areas (in line with Policy AMG 4); and</p> <p>8. protect, retain or enhance trees, hedgerows or woodland of visual, ecological, historic cultural or amenity value.</p> <p><u>National Development Management Policies</u></p> <p>Chapter 5 of Planning Policy Wales and TAN 5 set out clear national development management policies and guidance in respect of statutory designations, reflecting the greater environmental significance of international and national statutory designations, compared to statutory and non-statutory local designations Table 23 (in the Joint Local Development Plan) lists all international and national statutory designations relevant to the Plan area, and defines the obligation of the designation. When preparing and considering planning applications, Policy PS 19, PCYFF 1 as well as Planning Policy Wales and TAN 5 should be considered. This approach subjects all planning applications to up-</p>		

Table 2 Joint Local Development Plan (Anglesey and Gwynedd) (adopted July 2017)			
Policy Name/Number	Policy Description	Where this is covered in the ES	Compliance Points
	to-date national planning policy and guidance to avoid unnecessary repetition throughout the Plan.		
Policy AMG 4: Coastal Protection	<p>In considering a proposal on the coast, including the Heritage Coast, there will be a need to ensure that the proposal conforms to the following criteria:</p> <ol style="list-style-type: none"> <li>1. the development due to its nature must be located on the coast, or in open estuaries, or nearby, and that there is an overriding economic and social benefit from the development;</li> <li>2. it does not cause unacceptable harm to:                             <ol style="list-style-type: none"> <li>i. water quality;</li> <li>ii. public access considerations;</li> <li>iii. the built environment, or the landscape, or seascape character;</li> <li>iv. the area's biodiversity interests (including European Protected Areas such as marine Special Areas of Conservation and Special Protected Areas) due to their location, scale, form, appearance, materials, noise, or emissions or due to an unacceptable increase in traffic;</li> </ol> </li> <li>3. priority is given to locations with a close visual connection to current buildings or existing structures;</li> <li>4. there are no suitable alternative locations on the coast that have</li> </ol>	<p>Chapter 9, Ecology and Nature Conservation assessment (<b>Document 5.9</b>).                      Biodiversity Mitigation Strategy (<b>Document 7.7</b>).                      Enhancement Strategy (<b>Document 7.13</b>).</p>	<p>Effects on individual receptors are considered, particularly impacts on designated sites and their interest features, (including marine), are discussed in this assessment.</p>

Table 2 Joint Local Development Plan (Anglesey and Gwynedd) (adopted July 2017)			
Policy Name/Number	Policy Description	Where this is covered in the ES	Compliance Points
	<p>been developed and</p> <p>5. that the development is consistent with other policies within the Plan including Policy ARNA1.</p>		
Policy AMG 5: Local Biodiversity Conservation	<p>Proposals must protect and, where appropriate, enhance biodiversity that has been identified as being important to the local area by:</p> <p>a. avoiding significant harmful impacts through the sensitive location of development;</p> <p>b. considering opportunities to create, improve and manage wildlife habitats and natural landscape including wildlife corridors, stepping stones, trees, hedges, woodlands and watercourses;</p> <p>A proposal affecting sites of local biodiversity importance will be refused unless they can conform with all of the following criteria:</p> <p>1. that there are no other satisfactory alternative sites available for the development;</p> <p>2. the need for the development outweighs the importance of the site for local nature conservation; and</p> <p>3. that appropriate mitigation or compensation measures are included as part of the proposal.</p> <p>Where necessary, an Ecological Assessment which highlights the relevant local biodiversity issues should be included with the</p>	<p>Chapter 9, Ecology and Nature Conservation assessment (<b>Document 5.9</b>).</p> <p>Biodiversity Mitigation Strategy (<b>Document 7.7</b>).</p> <p>Enhancement Strategy (<b>Document 7.13</b>).</p>	<p>Relevant biodiversity issues have been highlighted and appropriate mitigation measures applied in order to reduce/minimise impacts on local biodiversity.</p> <p>Consideration has also been given to enhancing biodiversity.</p>

Table 2 Joint Local Development Plan (Anglesey and Gwynedd) (adopted July 2017)			
Policy Name/Number	Policy Description	Where this is covered in the ES	Compliance Points
	planning application.		
Policy AMG 6: Protecting Sites of Regional or Local Significance	Proposals that are likely to cause direct or indirect significant harm to Local Nature Reserves (LNR), Wildlife Sites (WS) or Regionally Important Geological/Geomorphologic Sites (RIGS) will be refused, unless it can be proven that there is an overriding social, environmental and/or economic need for the development, and that there is no other suitable site that would avoid having a detrimental impact on sites of local nature conservation value or local geological importance. When a development is granted, it will be necessary to ensure that there are appropriate mitigation measures in place. It will be possible to use planning conditions and/or obligations in order to safeguard the site's biodiversity and geological importance.	Chapter 9, Ecology and Nature Conservation assessment ( <b>Document 5.9</b> ). Biodiversity Mitigation Strategy ( <b>Document 7.7</b> ). Enhancement Strategy ( <b>Document 7.13</b> ).	Where there may be loss or partial loss (temporary or permanent) to sites of local value, appropriate mitigation measures would be put in place in order to reduce potential impacts on the site.