

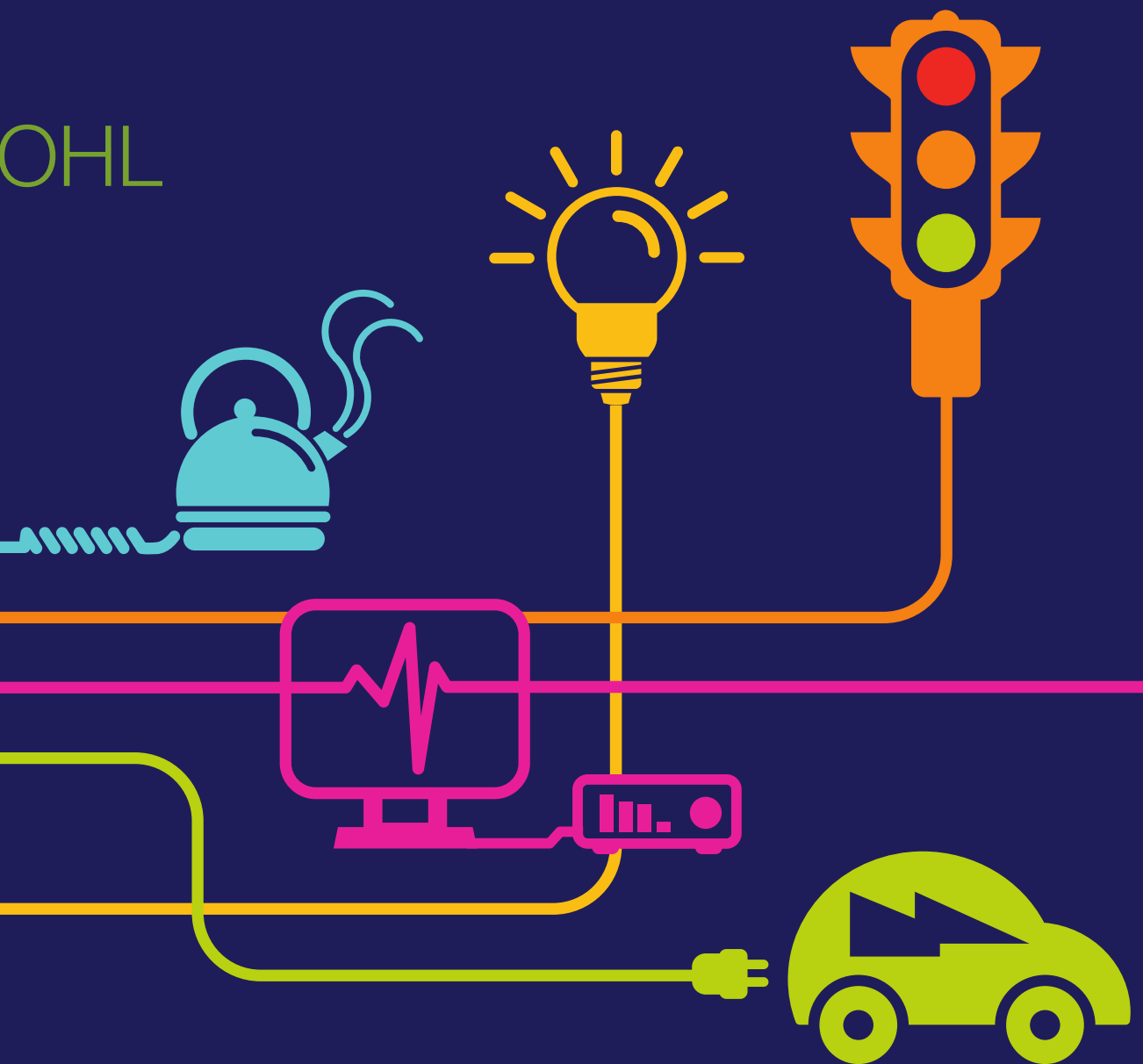
DOCUMENT 5.7.1.13

Landscape Mitigation Proposals for OHL

Chapter 7 – Figure 13

National Grid (North Wales Connection Project)

Regulation 5(2)(a) including (l) and (m) of the Infrastructure Planning (Applications: Prescribed Forms and Procedure) Regulations 2009



CARROG ISA - SECTION A



Planting Schedule for Carrog Isia

WOODLAND TREE SPECIES

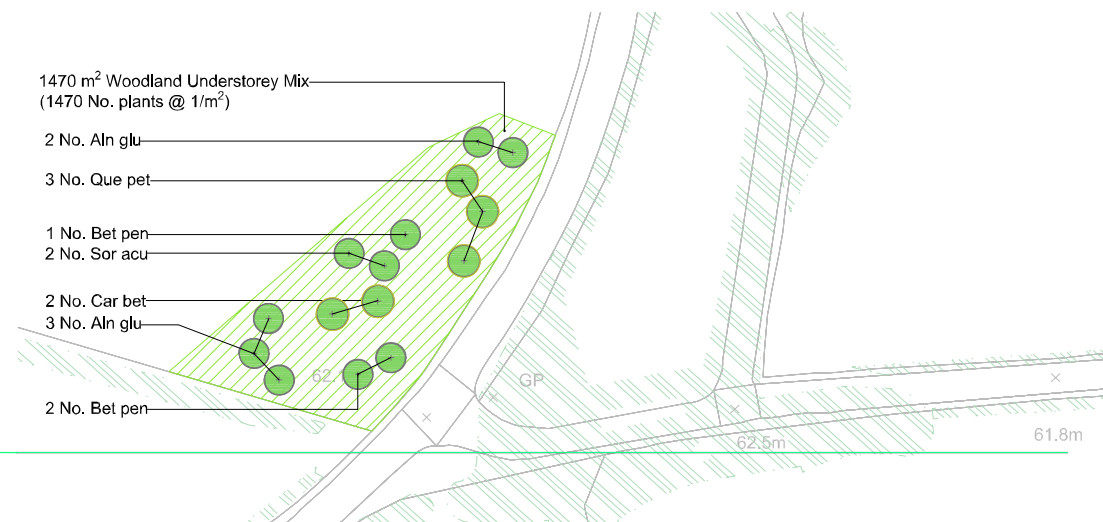
No.	Species	Abbreviation	Size (cm)	Root Type	Specification
2	Ainus glutinosa	Aln glu	12-14	RB	HS, 300-350cm, bushy
3	Betula pubescens	Bet pub	12-14	RB	HS, 300-350cm, bushy
1	Fagus sylvatica	Fag syl	14-16	RB	EHS, 425-450cm, bushy
2	Quercus petraea	Que pet	14-16	RB	EHS, 425-450cm, bushy
2	Ulmus glabra	Ulm gla	12-14	RB	HS, 300-350cm, bushy

WOODLAND UNDERSTOREY

(653 m² planted @ 1/m², notch planted into ground, individual varieties to be planted in groups of approximately 3-7)

No.	Species	% of Mix	Size (cm)	Root Type
131	Crataegus monogyna	20	60/80	B
131	Corylus avellana	20	60/80	B
65	Rosa canina	10	40/60	B
65	Rosa pimpinellifolia	10	40/60	B
98	Prunus spinosa	15	60/90	B
33	Salix cinerea	5	60/80	B
98	Sambucus nigra	15	60/80	B
33	Ulex europaeus	5	40/60	2L Pot

WOODLAND COPSE - SECTION D



Planting Schedule for Woodland Copse

WOODLAND TREE SPECIES

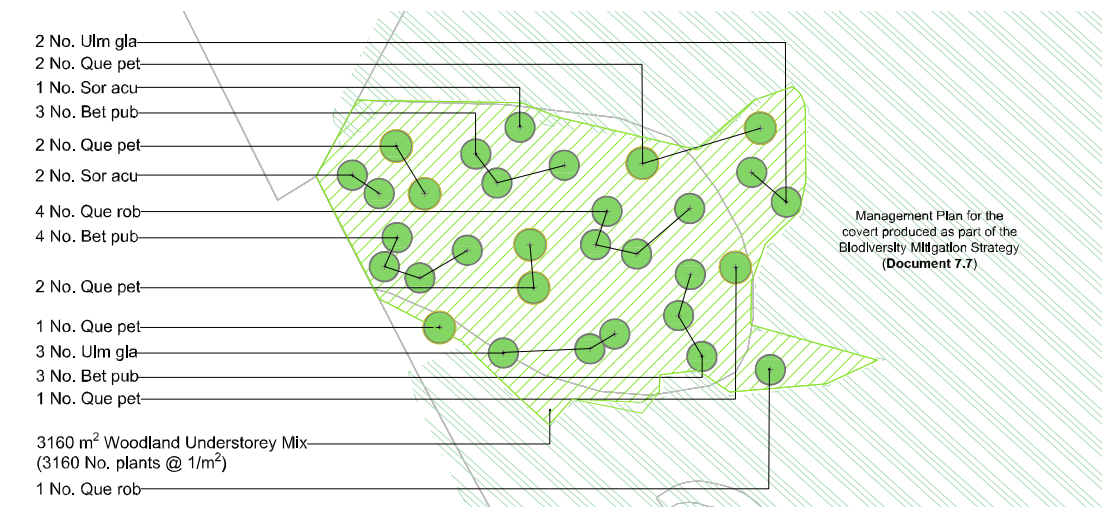
No.	Species	Abbreviation	Size (cm)	Root Type	Specification
5	Ainus glutinosa	Aln glu	12-14	RB	HS, 300-350cm, bushy
3	Betula pendula	Bet pen	12-14	RB	HS, 300-350cm, bushy
2	Carpinus betulus	Car bet	14-16	RB	EHS, 425-450cm, bushy
3	Quercus petraea	Que pet	14-16	RB	EHS, 425-450cm, bushy
2	Sorbus acuparia	Sor acu	12-14	RB	HS, 300-350cm, bushy

WOODLAND UNDERSTOREY

(1470 m² planted @ 1/m², notch planted into ground, individual varieties to be planted in groups of approximately 3-7)

No.	Species	% of Mix	Size (cm)	Root Type
294	Crataegus monogyna	20	60/80	B
294	Corylus avellana	20	60/80	B
147	Rosa canina	10	40/60	B
147	Rosa pimpinellifolia	10	40/60	B
221	Prunus spinosa	15	60/90	B
74	Salix cinerea	5	60/80	B
221	Sambucus nigra	15	60/80	B
74	Ulex europaeus	5	40/60	2L Pot

GYLCHED COVER - SECTION D



Planting Schedule for Gylched Cover

WOODLAND TREE SPECIES

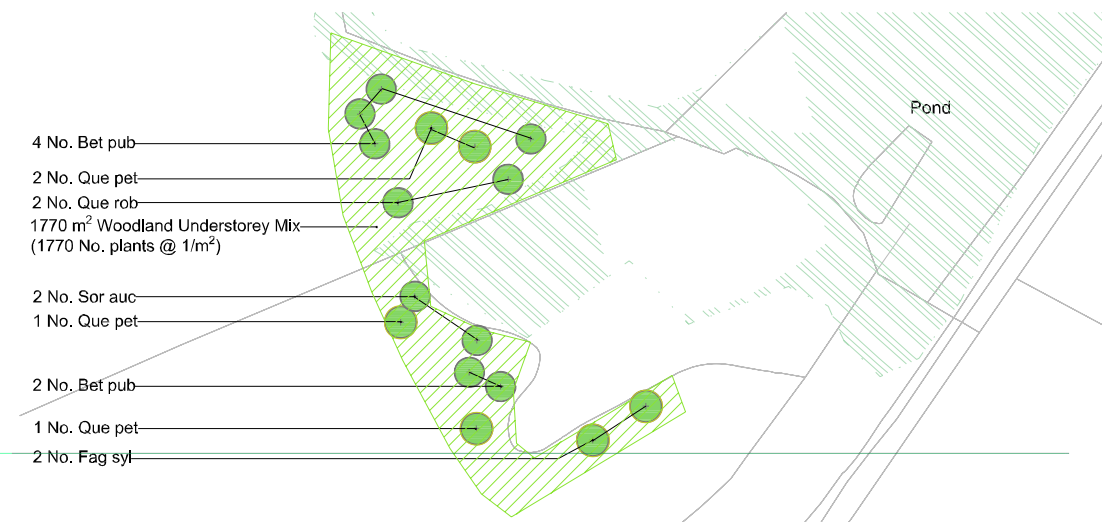
No.	Species	Abbreviation	Size (cm)	Root Type	Specification
10	Betula pubescens	Bet pub	12-14	RB	HS, 300-350cm, bushy
5	Quercus robur	Que rob	12-14	RB	HS, 300-350cm, bushy
8	Quercus petraea	Que pet	14-16	RB	EHS, 425-450cm, bushy
3	Sorbus acuparia	Sor acu	12-14	RB	HS, 300-350cm, bushy
5	Ulmus glabra	Ulm gla	12-14	RB	HS, 300-350cm, bushy

WOODLAND UNDERSTOREY

(3160 m² planted @ 1/m², notch planted into ground, individual varieties to be planted in groups of approximately 3-7)

No.	Species	% of Mix	Size (cm)	Root Type
158	Acer campestre	5	60/80	B
632	Crataegus monogyna	20	60/80	B
158	Cornus sanguinea	5	40/60	B
632	Corylus avellana	20	60/80	B
158	Euonymus europaeus	5	40/60	B
474	Prunus spinosa	15	60/90	B
158	Salix cinerea	5	60/80	B
474	Sambucus nigra	15	60/80	B
158	Viburnum opulus	5	40/60	B
158	Viburnum lantana	5	40/60	B

CEINT - SECTION D



Planting Schedule for Ceint

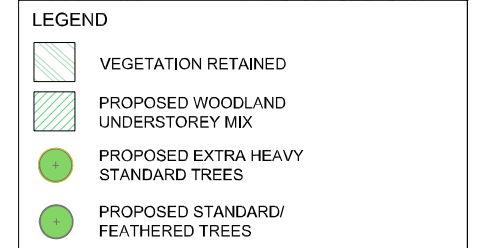
WOODLAND TREE SPECIES

No.	Species	Abbreviation	Size (cm)	Root Type	Specification
6	Betula pubescens	Bet pub	12-14	RB	HS, 300-350cm, bushy
2	Fagus sylvatica	Fag syl	14-16	RB	EHS, 425-450cm, bushy
2	Quercus robur	Que rob	12-14	RB	HS, 300-350cm, bushy
4	Quercus petraea	Que pet	14-16	RB	EHS, 425-450cm, bushy
2	Sorbus acuparia	Sor acu	12-14	RB	HS, 300-350cm, bushy

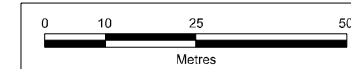
WOODLAND UNDERSTOREY

(1770 m² planted @ 1/m², notch planted into ground, individual varieties to be planted in groups of approximately 3-7)

No.	Species	% of Mix	Size (cm)	Root Type
354	Crataegus monogyna	20	60/80	B
354	Corylus avellana	20	60/80	B
177	Rosa canina	10	40/60	B
177	Rosa pimpinellifolia	10	40/60	B
266	Prunus spinosa	15	60/90	B
89	Salix cinerea	5	60/80	B
266	Sambucus nigra	15	60/80	B
89	Ulex europaeus	5	40/60	2L Pot



Contains OS data © Crown copyright and database right 2018. Background Mapping Information has been reproduced from the Ordnance Survey map by permission of Ordnance Survey on behalf of The controller of Her Majesty's Stationery Office. © Crown Copyright Ordnance Survey. National Grid Electricity - 100024241. National Grid Gas - 100024886



A	14/08/18	ENVIRONMENTAL STATEMENT	KM	HJ	SG
Rev	Date	Description	GIS	Chk	App
nationalgrid					
Scheme: NORTH WALES CONNECTION PROJECT					
Document Number: 5.7.1.13					
Document Title: FIGURE 7.13 LANDSCAPE MITIGATION PROPOSALS FOR OHL					
Creator:	Date:	Checker:	Date:	Approver:	Date:
KM	18/07/2018	HJ	18/07/2018	SG	19/07/2018
Document Type:	Scale:	Format:	Sheets:	Rev:	
FIGURE	1:625	A1	1 of 1	A	