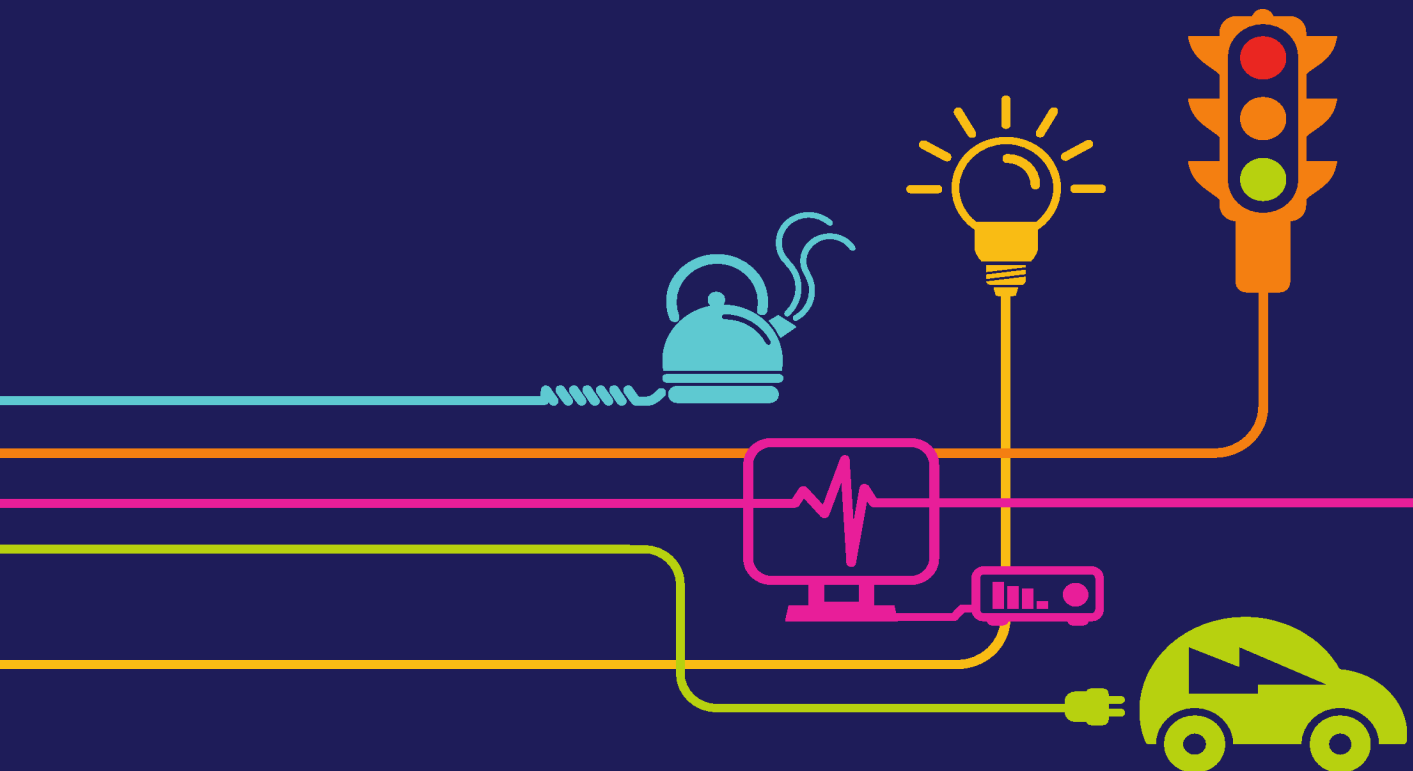


Guide to the Application

National Grid (North Wales Connection Project)

*Regulation 5(2)(a) of the Infrastructure Planning
(Applications: Prescribed Forms and Procedure) Regulations 2009*



national**grid**

North Wales Connection Project

Volume 1

1.5 Guide to the Application

National Grid
National Grid House
Warwick Technology Park
Gallows Hill
Warwick
CV34 6DA

September 2018

Document Control			
Document Properties			
Organisation	National Grid		
Author	Sian Robinson		
Approved by	Ken Guest		
Title	Guide to the Application		
Document Reference	1.5		
Version History			
Date	Version	Status	Description/Changes
01/09/2018	A	Final	First Issue

Introduction

This document provides a guide to National Grid's North Wales Connection Project Development Consent Order application and which document version is the most up to date.

This is a live document and will be updated when updates or revisions to existing documents are made and new documents are submitted to the Planning Inspectorate

Master Document List

The master document list table commences on page 2 and provides a full list of all the documents submitted to date, indicating either the latest revision (if applicable) or when a new document was submitted.

Where a document has Figures or Appendices associated they will be numbered using the Volume, then Document identifiers, followed by 1 for figures and 2 to denote appendices, finishing with a unique numerical identifier

e.g 5.4.1.1 = Figure 1 of Chapter/Document 4 of Volume 5

7.4.2.1 = Appendix 1 of Document 4 of Volume 7

For ease of navigation these documents are grouped by volumes as follows (note the colours continue throughout on the document covers):

Volume	This volume
1. Application Information	provides details of the specific application information required by the Planning Inspectorate
2. Draft Development Consent Order	outlines the legal powers we are seeking from the Government to build the proposed connection
3. Compulsory Acquisition Information	provides evidence of why we may require legal powers of compulsory acquisition
4. Plans and Drawings	contains the plans which show where we propose to undertake the work
5. Environmental Information	shows how we assessed the potential impact on the environment
6. Consultation Report	provides details of the pre-application consultation that we have undertaken on the project
7. Other Documents	includes additional documents produced for the application submission
8. Welsh Translation	application submission documents translated to the Welsh language
9. Reference Documents	existing project documents referenced elsewhere within the DCO application

Public Folder	Master Document List - Submissions Made to the Planning Inspectorate			
	Document	Version	Submission Date	Document Title
Volume 1 Application Information				
1	1.1	A	07/09/18	Navigation Document
1	1.2	A	07/09/18	Application Letter (inc s55 Acceptance of Applications Checklist)
1	1.3	A	07/09/18	Application Form
1	1.4	A	07/09/18	Glossary
1	1.5	A	07/09/18	Guide to the Application
Volume 2 Draft Development Consent Order				
2	2.1	A	07/09/18	Draft Development Consent Order
2	2.2	A	07/09/18	Draft Explanatory Memorandum
Volume 3 Compulsory Acquisition Information				
3	3.1	A	07/09/18	Statement of Reasons
3	3.2	A	07/09/18	Funding Statement
4	3.3_Part 1 of 5	A	07/09/18	Book of Reference
5	3.3_Part 2 of 5	A	07/09/18	Book of Reference
6	3.3_Part 3 of 5	A	07/09/18	Book of Reference
7	3.3_Part 4 of 5	A	07/09/18	Book of Reference
8	3.3_Part 5 of 5	A	07/09/18	Book of Reference
Volume 4 Plans and Drawings				
10	4.0.1	A	07/09/18	Overall Location Plan
10	4.0.2	A	07/09/18	Master Key Plan
9	4.1	A	07/09/18	Land Affected Plans
10	4.2	A	07/09/18	Land Plans
11	4.3	A	07/09/18	Special Category Land and Crown Land Plans
12	4.4	A	07/09/18	Works Plans
13	4.5	A	07/09/18	Access and Rights of Way Plans
14	4.6	A	07/09/18	Other Environmental Features Plans
15	4.7	A	07/09/18	Statutory or Non-Statutory Sites or Features of Nature Conservation, Habitats and Water Bodies Plans
16	4.8	A	07/09/18	Habitats of Protected Species, Important Habitats or Other Diversity Features Plans
17	4.9	A	07/09/18	CONFIDENTIAL: Habitats of Protected Species: Location of Badger Setts Plans
18	4.10	A	07/09/18	Statutory or Non-Statutory Sites or Features of the Historic Environment Plans
19	4.11	A	07/09/18	Trees and Hedgerows Potentially Affected Plans
20	4.12	A	07/09/18	Traffic Regulation Order Plans
21	4.13	A	07/09/18	Design Plans
22	4.14	A	07/09/18	Plans Guidance Document
Volume 5 Environmental Information				
23	5.0	A	07/09/18	Environmental Statement - Non Technical Summary
24	5.1	A	07/09/18	Chapter 1: Introduction
24	5.1.1.1	A	07/09/18	Chapter 1 - Figure 1 - Location of the Proposed Development Plan
24	5.1.2.1	A	07/09/18	Chapter 1 - Appendix 1 - Notification to Provide an Environmental Statement
25	5.2	A	07/09/18	Chapter 2: Alternatives and Proposed Development History
26	5.3	A	07/09/18	Chapter 3: Description of the Proposed Development
26	5.3.1.1	A	07/09/18	Chapter 3 - Figure 1 - Order Limits and Limits of Deviation
26	5.3.1.2	A	07/09/18	Chapter 3 - Figure 2 - Sections of New and Existing Overhead Line
26	5.3.2.1	A	07/09/18	Chapter 3 - Appendix 1 - Indicative Pylon Schedule
26	5.3.2.2	A	07/09/18	Chapter 3 - Appendix 2 - Indicative Watercourse Crossing Schedule
26	5.3.2.3	A	07/09/18	Chapter 3 - Appendix 3 - Indicative Public Rights of Way, Road and Railway Crossing Schedule
26	5.3.2.4	A	07/09/18	Chapter 3 - Appendix 4 - Indicative Utility Crossing Schedule
27	5.4	A	07/09/18	Chapter 4: Construction, Operation, Maintenance and Decommissioning of the Proposed Development
27	5.4.1.1	A	07/09/18	Chapter 4 - Figure 1 - National Grid Construction Plans
27	5.4.1.2	A	07/09/18	Chapter 4 - Figure 2 - Third Party Construction plans
27	5.4.2.1	A	07/09/18	Chapter 4 - Appendix 1 - Temporary Access Principles
28	5.5	A	07/09/18	Chapter 5 - EIA Consultation
28	5.5.2.1	A	07/09/18	Chapter 5 - Appendix 1 - Schedule of Responses to the Scoping Opinion
29	5.5.2.2	A	07/09/18	Chapter 5 - Appendix 2 - Schedule of Responses to the PEIR

Public Folder	Master Document List - Submissions Made to the Planning Inspectorate			
	Document	Version	Submission Date	Document Title
29	5.5.2.3	A	07/09/18	Chapter 5 - Appendix 3 - Schedule of Responses to Stakeholder Review of the Draft ES
30	5.6	A	07/09/18	Chapter 6 - EIA Methodology and Basis of Assessment
31	5.7	A	07/09/18	Chapter 7 - Landscape Assessment
32	5.7.1.1	A	07/09/18	Chapter 7 - Figure 1 - Landscape Constraints Overview
32	5.7.1.2	A	07/09/18	Chapter 7 - Figure 2 - Landscape Constraints
32	5.7.1.3	A	07/09/18	Chapter 7 - Figure 3 - Anglesey Area of Outstanding Natural Beauty and its Setting
32	5.7.1.4	A	07/09/18	Chapter 7 - Figure 4 - Snowdonia National Park and its Setting
32	5.7.1.5	A	07/09/18	Chapter 7 - Figure 5 - Landform and Drainage Overview
32	5.7.1.6	A	07/09/18	Chapter 7 - Figure 6 - Landform and Drainage
32	5.7.1.7	A	07/09/18	Chapter 7 - Figure 7 - Landscape Overview
32	5.7.1.8	A	07/09/18	Chapter 7 - Figure 8 - LANDMAP Visual and Sensory Aspect Areas Overview
32	5.7.1.9	A	07/09/18	Chapter 7 - Figure 9 - LANDMAP Visual and Sensory Aspect Areas
32	5.7.1.10	A	07/09/18	Chapter 7 - Figure 10 - National Landscape Characters Areas, Regional Landscape Character Areas, and LANDMAP Visual and Sensory Aspect Areas
32	5.7.1.11	A	07/09/18	Chapter 7 - Figure 11 - National Marine Character Areas, Local Seascape Character Areas, and LANDMAP Visual and Sensory Aspect Areas
32	5.7.1.12	A	07/09/18	Chapter 7 - Figure 12 - Landscape Mitigation Location Plan
32	5.7.1.13	A	07/09/18	Chapter 7 - Figure 13 - Landscape Mitigation Proposals for OHL
32	5.7.1.14	A	07/09/18	Chapter 7 - Figure 14 - Landscape Mitigation Proposals for Braint THH/CSEC
32	5.7.1.15	A	07/09/18	Chapter 7 - Figure 15 - Landscape Mitigation Proposals for Tŷ Fodol THH/CSEC
32	5.7.1.16	A	07/09/18	Chapter 7 - Figure 16 - Landscape Mitigation Proposals for Pentir Substation Extension
32	5.7.1.17	A	07/09/18	Chapter 7 - Figure 17 - Effects on Landscape Elements
31	5.7.2.1	A	07/09/18	Chapter 7 - Appendix 1 - Local Planning Policy
32	5.7.2.2	A	07/09/18	Chapter 7 - Appendix 2 - VSAA Character Assessment
32	5.7.2.3	A	07/09/18	Chapter 7 - Appendix 3 - Landscape Character Areas Relevant to the Study Area
31	5.7.2.4	A	07/09/18	Chapter 7 - Appendix 4 - Registered Parks and Gardens Excluded from the Landscape Assessment
33	5.8	A	07/09/18	Chapter 8 - Visual Assessment
35	5.8.1.1	A	07/09/18	Chapter 8 - Figure 1 - Visual Receptors
35	5.8.1.2	A	07/09/18	Chapter 8 - Figure 2 - Overall Zones of Theoretical Visibility
35	5.8.1.3	A	07/09/18	Chapter 8 - Figure 3 - Zones of Theoretical Visibility Braint Cable Sealing End Compound and Tunnel Head House
35	5.8.1.4	A	07/09/18	Chapter 8 - Figure 4 - Zones of Theoretical Visibility Tŷ Fodol Cable Sealing End Compound and Tunnel Head House
35	5.8.1.5	A	07/09/18	Chapter 8 - Figure 5 - Zones of Theoretical Visibility Wylfa (Gantry)
35	5.8.1.6	A	07/09/18	Chapter 8 - Figure 6 - Zones of Theoretical Visibility Pentir Substation
35	5.8.1.7	A	07/09/18	Chapter 8 - Figure 7 - Effects on Communities During Construction
35	5.8.1.8	A	07/09/18	Chapter 8 - Figure 8 - Effects on Communities During Operation
35	5.8.1.9	A	07/09/18	Chapter 8 - Figure 9 - Effects on Residential Receptors During Construction
35	5.8.1.10	A	07/09/18	Chapter 8 - Figure 10 - Effects on Residential Receptors During Operation
35	5.8.1.11	A	07/09/18	Chapter 8 - Figure 11 - Effects on Recreational Receptors During Construction
35	5.8.1.12	A	07/09/18	Chapter 8 - Figure 12 - Effects on Recreational Receptors During Operation
35	5.8.1.13	A	07/09/18	Chapter 8 - Figure 13 - Effects on Roads and Rail During Construction
35	5.8.1.14	A	07/09/18	Chapter 8 - Figure 14 - Effects on Roads and Rail During Operation
33	5.8.2.1	A	07/09/18	Chapter 8 - Appendix 1 - Local Landscape Policy
34	5.8.2.2_Part 1 of 6	A	07/09/18	Chapter 8 - Appendix 2 - Viewpoint Assessment
34	5.8.2.2_Part 2 of 6	A	07/09/18	Chapter 8 - Appendix 2 - Viewpoint Assessment
34	5.8.2.2_Part 3 of 6	A	07/09/18	Chapter 8 - Appendix 2 - Viewpoint Assessment
34	5.8.2.2_Part 4 of 6	A	07/09/18	Chapter 8 - Appendix 2 - Viewpoint Assessment
34	5.8.2.2_Part 5 of 6	A	07/09/18	Chapter 8 - Appendix 2 - Viewpoint Assessment
34	5.8.2.2_Part 6 of 6	A	07/09/18	Chapter 8 - Appendix 2 - Viewpoint Assessment
35	5.8.2.3	A	07/09/18	Chapter 8 - Appendix 3 - Residential Visual Amenity Assessment
35	5.8.2.4	A	07/09/18	Chapter 8 - Appendix 4 - Public Right of Way Assessment
35	5.8.2.5	A	07/09/18	Chapter 8 - Appendix 5 - Views from Roads Assessment
36	5.9	A	07/09/18	Chapter 9 - Ecology and Nature Conservation
37	5.9.1.1	A	07/09/18	Chapter 9 - Figure 1 - Statutory Designated Sites
37	5.9.1.2	A	07/09/18	Chapter 9 - Figure 2 - Statutory Designated Sites in the Wider Area
37	5.9.1.3	A	07/09/18	Chapter 9 - Figure 3 - Non-Statutory Designated Sites
37	5.9.1.4	A	07/09/18	Chapter 9 - Figure 4 - Non-Statutory Designated Sites - Wildlife Sites
37	5.9.1.5	A	07/09/18	Chapter 9 - Figure 5 - Marine Statutory Designated Sites
37	5.9.1.6	A	07/09/18	Chapter 9 - Figure 6 - Marine Drop Down Camera and Grab Sample Sites

Public Folder	Master Document List - Submissions Made to the Planning Inspectorate			
	Document	Version	Submission Date	Document Title
37	5.9.1.7	A	07/09/18	Chapter 9 - Figure 7 - New Benthic Habitats
37	5.9.1.8	A	07/09/18	Chapter 9 - Figure 8 - Grey Seal - Total Estimated Usage for the Irish Sea
38	5.9.2.1	A	07/09/18	Chapter 9 Appendix 1 - Local Planning Policy
38	5.9.2.2	A	07/09/18	Chapter 9 Appendix 2 - Designated Sites Information
38	5.9.2.3	A	07/09/18	Chapter 9 Appendix 3 - Phase 1 Habitat Report
38	5.9.2.4	A	07/09/18	Chapter 9 Appendix 4 - National Vegetation Classification Report
38	5.9.2.5	A	07/09/18	Chapter 9 Appendix 5 - Hedgerow Report
38	5.9.2.6	A	07/09/18	Chapter 9 Appendix 6 - Great Crested Newt Report
38	5.9.2.7	A	07/09/18	Chapter 9 Appendix 7 - Badger Report (CONFIDENTIAL)
38	5.9.2.8	A	07/09/18	Chapter 9 Appendix 8 – Otter and Water Vole Report (CONFIDENTIAL)
38	5.9.2.9	A	07/09/18	Chapter 9 Appendix 9 - Reptile Report
39	5.9.2.10	A	07/09/18	Chapter 9 Appendix 10 - Bat Roost Report (CONFIDENTIAL)
39	5.9.2.11	A	07/09/18	Chapter 9 Appendix 11 - Bat Activity Report (CONFIDENTIAL)
39	5.9.2.12	A	07/09/18	Chapter 9 Appendix 12 - Terrestrial Mammal Report
39	5.9.2.13	A	07/09/18	Chapter 9 Appendix 13 - Freshwater Report (CONFIDENTIAL)
39	5.9.2.14	A	07/09/18	Chapter 9 Appendix 14 - Terrestrial Invertebrate Report
39	5.9.2.15	A	07/09/18	Chapter 9 Appendix 15 - Ornithological Assessment Report (CONFIDENTIAL)
39	5.9.2.16	A	07/09/18	Chapter 9 Appendix 16 - Menai Strait Intertidal Report
39	5.9.2.17	A	07/09/18	Chapter 9 Appendix 17 - Menai Strait Subtidal Ecology Survey Report
39	5.9.2.18	A	07/09/18	Chapter 9 Appendix 18 - Underwater Construction Noise Modelling and Assessment Report
40	5.10	A	07/09/18	Chapter 10 - Historic Environment
43	5.10.1.1	A	07/09/18	Chapter 10 - Figure 1 - Designated Assets
43	5.10.1.2	A	07/09/18	Chapter 10 - Figure 2 - Non-Designated Assets
43	5.10.1.3	A	07/09/18	Chapter 10 - Figure 3 - Extent of Geophysical Surveys
43	5.10.1.4	A	07/09/18	Chapter 10 - Figure 4 - Geophysical Survey Results
43	5.10.1.5	A	07/09/18	Chapter 10 - Figure 5 - Location of Trial Trenches
43	5.10.1.6	A	07/09/18	Chapter 10 - Figure 6 - Assets Included in the Settings Assessment
43	5.10.1.7	A	07/09/18	Chapter 10 - Figure 7 - Dinorwig Landscape of Outstanding Historical Interest
43	5.10.1.8	A	07/09/18	Chapter 10 - Figure 8 - Location of Recorded Archaeological Remains in Relation to the Proposed Development
43	5.10.1.9	A	07/09/18	Chapter 10 - Figure 9 - Settings Assessment: Location of Assets in Relation to the Proposed Development
40	5.10.2.1	A	07/09/18	Chapter 10 - Appendix 1 - Historic Environment Desk Study Report
41	5.10.2.2_Part 1 of 8	A	07/09/18	Chapter 10 - Appendix 2 - Geophysical Survey Report
41	5.10.2.2_Part 2 of 8	A	07/09/18	Chapter 10 - Appendix 2 - Geophysical Survey Report
41	5.10.2.2_Part 3 of 8	A	07/09/18	Chapter 10 - Appendix 2 - Geophysical Survey Report
41	5.10.2.2_Part 4 of 8	A	07/09/18	Chapter 10 - Appendix 2 - Geophysical Survey Report
41	5.10.2.2_Part 5 of 8	A	07/09/18	Chapter 10 - Appendix 2 - Geophysical Survey Report
41	5.10.2.2_Part 6 of 8	A	07/09/18	Chapter 10 - Appendix 2 - Geophysical Survey Report
41	5.10.2.2_Part 7 of 8	A	07/09/18	Chapter 10 - Appendix 2 - Geophysical Survey Report
41	5.10.2.2_Part 8 of 8	A	07/09/18	Chapter 10 - Appendix 2 - Geophysical Survey Report
42	5.10.2.3	A	07/09/18	Chapter 10 - Appendix 3 - ASIDOHL
42	5.10.2.4	A	07/09/18	Chapter 10 - Appendix 4 - CADW Designations
42	5.10.2.5	A	07/09/18	Chapter 10 - Appendix 5 - Historic Environment Photographs
42	5.10.2.6	A	07/09/18	Chapter 10 - Appendix 6 - Development Plan Policies
42	5.10.2.7	A	07/09/18	Chapter 10 - Appendix 7 - Trial Trench Report
42	5.10.2.8	A	07/09/18	Chapter 10 - Appendix 8 - Heritage Viewpoints
44	5.11	A	07/09/18	Chapter 11 - Geology, Hydrogeology and Ground Conditions
49	5.11.1.1	A	07/09/18	Chapter 11 - Figure 1 - Bedrock Geology
49	5.11.1.2	A	07/09/18	Chapter 11 - Figure 2 - Superficial Geology
49	5.11.1.3	A	07/09/18	Chapter 11 - Figure 3 - Superficial Hydrogeology
49	5.11.1.4	A	07/09/18	Chapter 11 - Figure 4 - Bedrock Hydrogeology
49	5.11.1.5	A	07/09/18	Chapter 11 - Figure 5 - Contaminated Land Regulatory Information
49	5.11.1.6	A	07/09/18	Chapter 11 - Figure 6 - Private Groundwater Abstractions
49	5.11.1.7	A	07/09/18	Chapter 11 - Figure 7 - Potentially Contaminated Land
49	5.11.1.8	A	07/09/18	Chapter 11 - Figure 8 - Historical Land Uses
49	5.11.1.9	A	07/09/18	Chapter 11 - Figure 9 - Surface Ground Working
49	5.11.1.10	A	07/09/18	Chapter 11 - Figure 10 - Coal Authority Information

Public Folder	Master Document List - Submissions Made to the Planning Inspectorate			
	Document	Version	Submission Date	Document Title
49	5.11.1.11	A	07/09/18	Chapter 11 - Figure 11 - Tunnel Geological Longitudinal Section
49	5.11.1.12	A	07/09/18	Chapter 11 - Figure 12 - LANDMAP Geological Landscapes
44	5.11.2.1	A	07/09/18	Chapter 11 - Appendix 1 - Local Planning Policy
44	5.11.2.2	A	07/09/18	Chapter 11 - Appendix 2 - Reference Tables for Figures 11.5, 11.6, 11.7, 11.8 and 11.9
44	5.11.2.3	A	07/09/18	Chapter 11 - Appendix 3 - Regulator Correspondence
44	5.11.2.4	A	07/09/18	Chapter 11 - Appendix 4 - Coal Authority Report
44	5.11.2.5	A	07/09/18	Chapter 11 - Appendix 5 - Walkover Survey
44	5.11.2.6	A	07/09/18	Chapter 11 - Appendix 6 - Private Water Supply Risk Assessment
45	5.11.2.7_Part 1 of 4	A	07/09/18	Chapter 11 - Appendix 7 - Ground Investigation Information
46	5.11.2.7_Part 2 of 4	A	07/09/18	Chapter 11 - Appendix 7 - Ground Investigation Information
47	5.11.2.7_Part 3 of 4	A	07/09/18	Chapter 11 - Appendix 7 - Ground Investigation Information
48	5.11.2.7_Part 4 of 4	A	07/09/18	Chapter 11 - Appendix 7 - Ground Investigation Information
48	5.11.2.8	A	07/09/18	Chapter 11 - Appendix 8 - Shaft and Tunnel Groundwater Inflow
50	5.12	A	07/09/18	Chapter 12 - Geology, Hydrogeology and Ground Conditions
51	5.12.1.1	A	07/09/18	Chapter 12 - Figure 1 - Local and Wider Hydrological Area of Influence
51	5.12.1.2	A	07/09/18	Chapter 12 - Figure 2 - Local and Wider Hydrological Area of Influence for Sub-Sections
51	5.12.1.3	A	07/09/18	Chapter 12 - Figure 3 - Detailed Hydrological Features
51	5.12.1.4	A	07/09/18	Chapter 12 - Figure 4 - Braint Topography
51	5.12.1.5	A	07/09/18	Chapter 12 - Figure 5 - Tŷ Fodol Topography
51	5.12.1.6	A	07/09/18	Chapter 12 - Figure 6 - Braint Fluvial Flood Mapping
51	5.12.1.7	A	07/09/18	Chapter 12 - Figure 7 - Braint Surface Water Flood Risk
51	5.12.1.8	A	07/09/18	Chapter 12 - Figure 8 - Afon Braint 0.1% +CC Flood Map
51	5.12.1.9	A	07/09/18	Chapter 12 - Figure 9 - Order Limits Topography
51	5.12.1.10	A	07/09/18	Chapter 12 - Figure 10 - Overhead Line Fluvial Flood Risk
51	5.12.1.11	A	07/09/18	Chapter 12 - Figure 11 - Overhead Line Surface Water Hazard Mapping
51	5.12.1.12	A	07/09/18	Chapter 12 - Figure 12 - Susceptibility to Groundwater Flooding
51	5.12.1.13	A	07/09/18	Chapter 12 - Figure 13 - Pentir Topography
51	5.12.1.14	A	07/09/18	Chapter 12 - Figure 14 - Groundwater Water Framework Directive Status
50	5.12.2.1	A	07/09/18	Chapter 12 - Appendix 1 - Overarching Flood Consequences Assessment
50	5.12.2.2	A	07/09/18	Chapter 12 - Appendix 2 - Pentir Substation Extension Flood Consequences Assessment
50	5.12.2.3	A	07/09/18	Chapter 12 - Appendix 3 - Tunnel Head Houses and Cable Sealing End Compounds Flood Consequences Assessment
50	5.12.2.4	A	07/09/18	Chapter 12 - Appendix 4 - Overhead Line Flood Consequences Assessment
50	5.12.2.5	A	07/09/18	Chapter 12 - Appendix 5 - Water Framework Directive Assessment
50	5.12.2.6	A	07/09/18	Chapter 12 - Appendix 6 - Designated Sites
50	5.12.2.7	A	07/09/18	Chapter 12 - Appendix 7 - Local Planning Policy
52	5.13	A	07/09/18	Chapter 13 - Traffic and Transport
53	5.13.1.1	A	07/09/18	Chapter 13 - Figure 1 - Existing Main Traffic Routes
53	5.13.1.2	A	07/09/18	Chapter 13 - Figure 2 - Proposed Construction Routes
53	5.13.1.3	A	07/09/18	Chapter 13 - Figure 3 - Proposed Temporary Access Point Locations
53	5.13.1.4	A	07/09/18	Chapter 13 - Figure 4 - Traffic Count Locations
53	5.13.1.5	A	07/09/18	Chapter 13 - Figure 5 - Abnormal Indivisible Loads (AIL) Routes
53	5.13.1.6	A	07/09/18	Chapter 13 - Figure 6 - Public Rights of Way (PROW)
53	5.13.1.7	A	07/09/18	Chapter 13 - Figure 7 - Unnamed Roads
53	5.13.1.8	A	07/09/18	Chapter 13 - Figure 8 - Highway Link References
53	5.13.1.9	A	07/09/18	Chapter 13 - Figure 9 - Highway Link and Receptor Sensitivity Classification
53	5.13.1.10	A	07/09/18	Chapter 13 - Figure 10 - Summary of Residual Effects - Severance
53	5.13.1.11	A	07/09/18	Chapter 13 - Figure 11 - Summary of Residual Effects - Pedestrian Delay
53	5.13.1.12	A	07/09/18	Chapter 13 - Figure 12 - Summary of Residual Effects - Pedestrian Amenity
53	5.13.1.13	A	07/09/18	Chapter 13 - Figure 13 - Summary of Residual Effects - Fear and Intimidation
53	5.13.1.14	A	07/09/18	Chapter 13 - Figure 14 - Summary of Residual Effects - Driver Delay
54	5.13.2.1_Part 1 of 2	A	07/09/18	Chapter 13 - Appendix 1 - Transport Assessment
55	5.13.2.1_Part 2 of 2	A	07/09/18	Chapter 13 - Appendix 1 - Transport Assessment
52	5.13.2.2	A	07/09/18	Chapter 13 - Appendix 2 - Local Planning Policy
56	5.14	A	07/09/18	Chapter 14 - Air Quality
56	5.14.1.1	A	07/09/18	Chapter 14 - Figure 1 - Air Quality Construction Routes
56	5.14.1.2	A	07/09/18	Chapter 14 - Figure 2 - Air Quality Monitoring Locations

Public Folder	Master Document List - Submissions Made to the Planning Inspectorate			
	Document	Version	Submission Date	Document Title
56	5.14.1.3	A	07/09/18	Chapter 14 - Figure 3 - Construction Dust Emissions Sensitive Receptors
56	5.14.1.4	A	07/09/18	Chapter 14 - Figure 4 - Road Traffic and Emergency Generators Emissions Sensitive Receptors
56	5.14.1.5	A	07/09/18	Chapter 14 - Figure 5 - Reported Air Quality Effects
56	5.14.2.1	A	07/09/18	Chapter 14 - Appendix 1 - Local Planning Policy
56	5.14.2.2	A	07/09/18	Chapter 14 - Appendix 2 - Construction Dust Assessment Method & Supporting Information
56	5.14.2.3	A	07/09/18	Chapter 14 - Appendix 3 - Detailed Air Quality Modelling Assessment
57	5.15	A	07/09/18	Chapter 15 - Construction Noise and Vibration
58	5.15.1.1	A	07/09/18	Chapter 15 - Figure 1 - Baseline Noise Monitoring Locations and Receptor Locations
58	5.15.1.2	A	07/09/18	Chapter 15 - Figure 2 - Study Areas for Construction Compounds and Substation Construction Works
58	5.15.1.3	A	07/09/18	Chapter 15 - Figure 3 - Study Areas for Pylon Construction and Dismantling Works.
58	5.15.1.4	A	07/09/18	Chapter 15 - Figure 4 - Study Area for Tunnelling Construction Compounds
58	5.15.1.5	A	07/09/18	Chapter 15 - Figure 5 - Study Area for Underground Tunnelling Works
58	5.15.1.6	A	07/09/18	Chapter 15 - Figure 6 - Study Areas for Access Tracks
58	5.15.1.7	A	07/09/18	Chapter 15 - Figure 7 - Study Area for Construction Traffic Routes
57	5.15.2.1	A	07/09/18	Chapter 15 - Appendix 1 - Local Planning Policy
57	5.15.2.2	A	07/09/18	Chapter 15 - Appendix 2 - Baseline Sound Monitoring Report
58	5.15.2.3	A	07/09/18	Chapter 15 - Appendix 3 - Baseline Sound Levels Used for Numerical Assessment of Effects
57	5.15.2.4	A	07/09/18	Chapter 15 - Appendix 4 - Construction Noise and Vibration Model Inputs
58	5.15.2.5	A	07/09/18	Chapter 15 - Appendix 5 - Assessment of Noise Effects from Works at Penmynydd Road Construction Compound
58	5.15.2.6	A	07/09/18	Chapter 15 - Appendix 6 - Assessment of Noise Effects from Works at Pentir Construction Compound
58	5.15.2.7	A	07/09/18	Chapter 15 - Appendix 7 - Assessment of Noise Effects at Pentir Substation Construction Compound
58	5.15.2.8	A	07/09/18	Chapter 15 - Appendix 8 - Assessment of Noise Effects from Works at Pentir Substation
58	5.15.2.9	A	07/09/18	Chapter 15 - Appendix 9 - Assessment of Noise and Vibration Effects from Construction of Access Tracks, Culverts and Bridges
58	5.15.2.10	A	07/09/18	Chapter 15 - Appendix 10 - Assessment of Noise and Vibration Effects from Pylon Construction, Dismantling and Conductor Stringing
58	5.15.2.11	A	07/09/18	Chapter 15 - Appendix 11 - Assessment of Vibration Effects from Pylon Construction
58	5.15.2.12	A	07/09/18	Chapter 15 - Appendix 12 - Assessment of Noise Effects from Works within the Braint Construction Compound
58	5.15.2.13	A	07/09/18	Chapter 15 - Appendix 13 - Assessment of Noise Effects from Works within the Tŷ Fodol Construction Compound
58	5.15.2.14	A	07/09/18	Chapter 15 - Appendix 14 - Assessment of Vibration Effects from Underground Tunnelling Works
58	5.15.2.15	A	07/09/18	Chapter 15 - Appendix 15 - Assessment of Noise Effects from Access Tracks used by Construction Vehicles
59	5.15.2.16	A	07/09/18	Chapter 15 - Appendix 16 - Assessment of Noise Effects from Construction Traffic Routes used by Construction Vehicles
60	5.15.2.17	A	07/09/18	Chapter 15 - Appendix 17 - Summary of Residual Noise and Vibration Effects from All Construction Activities
60	5.15.2.18	A	07/09/18	Chapter 15 - Appendix 18 - Assessment of Cumulative Noise Effects from Traffic Routes used by Construction Traffic
61	5.16	A	07/09/18	Chapter 16 - Operational Noise and Vibration
62	5.16.1.1	A	07/09/18	Chapter 16 - Figure 1 - Option A & B Dry Noise
62	5.16.1.2	A	07/09/18	Chapter 16 - Figure 2 - Option A & B Wet Noise
62	5.16.1.3	A	07/09/18	Chapter 16 - Figure 3 - Option B Dry Noise
62	5.16.1.4	A	07/09/18	Chapter 16 - Figure 4 - Option B Wet Noise
62	5.16.1.5	A	07/09/18	Chapter 16 - Figure 5 - Tunnel Head House - Braint
62	5.16.1.6	A	07/09/18	Chapter 16 - Figure 6 - Tunnel Head House - Tŷ Fodol (100% Realistic Worst Case)
62	5.16.1.7	A	07/09/18	Chapter 16 - Figure 7 - Tunnel Head House - Tŷ Fodol (50% Normal Operating Conditions)
62	5.16.1.8	A	07/09/18	Chapter 16 - Figure 8 - Pentir Substation
62	5.16.1.9	A	07/09/18	Chapter 16 - Figure 9 - Operational Noise - Residual Effects
61	5.16.2.1	A	07/09/18	Chapter 16 - Appendix 1 - Representative Baseline Area Map
61	5.16.2.2	A	07/09/18	Chapter 16 - Appendix 2 - Local Planning Policy
61	5.16.2.3	A	07/09/18	Chapter 16 - Appendix 3 - OHL Conductor Assessment Methodology Summary
61	5.16.2.4	A	07/09/18	Chapter 16 - Appendix 4 - Taking into Account the Existing 400 kV Overhead Line
61	5.16.2.5	A	07/09/18	Chapter 16 - Appendix 5 - Noise Model Output Assessment Tables
61	5.16.2.6	A	07/09/18	Chapter 16 - Appendix 6 - TR(T)94 A Method for Assessing the Community Response to Overhead Line Noise
63	5.17	A	07/09/18	Chapter 17 Socio Economics
63	5.17.1.1	A	07/09/18	Chapter 17 - Figure 1 - Lower Super Output Areas
63	5.17.1.2	A	07/09/18	Chapter 17 - Figure 2 - Welsh Indices of Multiple Deprivation
63	5.17.1.3	A	07/09/18	Chapter 17 - Figure 3 - Travel to Work Area
63	5.17.1.4	A	07/09/18	Chapter 17 - Figure 4 - Tourist Attractions and Recreational Resources
63	5.17.1.5	A	07/09/18	Chapter 17 - Figure 5 - Commercial Receptors
63	5.17.1.6	A	07/09/18	Chapter 17 - Figure 6 - Community Study Areas
63	5.17.1.7	A	07/09/18	Chapter 17 - Figure 7 - Amenity Assessment

Public Folder	Master Document List - Submissions Made to the Planning Inspectorate			
	Document	Version	Submission Date	Document Title
63	5.17.2.1	A	07/09/18	Chapter 17 - Appendix 1 - Amenity Assessment
63	5.17.2.2	A	07/09/18	Chapter 17 - Appendix 2 - Workforce Analysis Assumptions Log
63	5.17.2.3	A	07/09/18	Chapter 17 - Appendix 3 - Visitor Survey Results
63	5.17.2.4	A	07/09/18	Chapter 17 - Appendix 4 - Business Survey Results
64	5.18	A	07/09/18	Chapter 18 Agriculture
64	5.18.1.1	A	07/09/18	Chapter 18 - Figure 1 - Provisional Agricultural Land Classification
64	5.18.1.2	A	07/09/18	Chapter 18 - Figure 2 - Agricultural Land Classification at the Pentir Substation Extension
64	5.18.1.3	A	07/09/18	Chapter 18 - Figure 3 - Agricultural Land Classification at the Braint Tunnel Headhouse and Cable Sealing End Compound
64	5.18.1.4	A	07/09/18	Chapter 18 - Figure 4 - Agricultural Land Classification at the Ty Fodol Tunnel Headhouse and Cable Sealing End Compound
64	5.18.1.5	A	07/09/18	Chapter 18 - Figure 5 - Soil Associations in the Order Limits
64	5.18.2.1	A	07/09/18	Chapter 18 - Appendix 1 - Soil Profiles, ALC Calculations and Land Holding Data
64	5.18.2.2	A	07/09/18	Chapter 18 - Appendix 2 - Agriculture Consultation Correspondence
64	5.18.2.3	A	07/09/18	Chapter 18 - Appendix 3 - Local Planning Policy
65	5.19	A	07/09/18	Chapter 19 Intra-Project Effects
66	5.19.1.1	A	07/09/18	Chapter 19 - Figure 1 - Residual Intra-Project Effects Construction
66	5.19.1.2	A	07/09/18	Chapter 19 - Figure 1 - Residual Intra-Project Effects Operation
66	5.19.2.1	A	07/09/18	Chapter 19 - Appendix 1 - Pre Screening Stage Assessment
66	5.19.2.2	A	07/09/18	Chapter 19 - Appendix 2 - Stage 2 Screening Assessment
67	5.20	A	07/09/18	Chapter 20 Inter-Project Effects
67	5.20.1.1	A	07/09/18	Chapter 20 - Figure 1 - Indicative Development Locations Wylfa Newydd
67	5.20.1.2	A	07/09/18	Chapter 20 - Figure 2 - Cumulative Developments
67	5.20.2.1	A	07/09/18	Chapter 20 - Appendix 1 - Project Descriptions - Wylfa Newydd Power Station
67	5.20.2.2	A	07/09/18	Chapter 20 - Appendix 2 - Project Descriptions
68	5.21	A	07/09/18	Chapter 21 Statement of the Combined Effects with the Wider Works
68	5.21.1.1	A	07/09/18	Chapter 21 - Figure 1 - Indicative Locations of Wider Works
69	5.22	A	07/09/18	Document 22 Summary of Residual Effects
70	5.23	A	07/09/18	Document 23 Habitat Regulations Assessment Report
71	5.23.1.1	A	07/09/18	Document 23 - Figure 1 - Statutory Designated Sites Overview
71	5.23.1.2	A	07/09/18	Document 23 - Figure 2 - Statutory Designated Sites Detailed
71	5.23.1.3	A	07/09/18	Document 23 - Figure 3 - Corsydd Mon Anglesey Fens SAC & Ramsar
71	5.23.2.1	A	07/09/18	Document 23 - Appendix 1 - Screening Matrices
71	5.23.2.2	A	07/09/18	Document 23 - Appendix 2 - Integrity Matrices
71	5.23.2.3	A	07/09/18	Document 23 - Appendix 3 - Qualifying Features And Conservation Objectives, Threats/Vulnerabilities Of Natura 2000 Sites
72	5.24	A	07/09/18	Document 24 Statement of Statutory Nuisance
72	5.25	A	07/09/18	Document 25 Electric and Magnetic Fields Report
72	5.26	A	07/09/18	Document 26 Welsh Language Impact Assessment
72	5.26.1.1	A	07/09/18	Document 26 - Figure 1 - Travel to Work Areas
72	5.26.2.1	A	07/09/18	Document 26 - Appendix 1 - WLIA Baseline
72	5.27	A	07/09/18	Document 27 Well-being Report
72	5.27.2.1	A	07/09/18	Document 27 - Appendix 1 - Scoping Meeting Notes
72	5.27.2.2	A	07/09/18	Document 27 - Appendix 2 - WHIASU Report
72	5.27.2.3	A	07/09/18	Document 27 - Appendix 3 - List of Workshop Attendees
73	5.28	A	07/09/18	Document 28 Schedule of Mitigation
73	5.28.2.1	A	07/09/18	Document 28 - Appendix 1 - Legislation Compliance Audit
74	5.29_Part 1 of 6	A	07/09/18	Photomontages
74	5.29_Part 2 of 6	A	07/09/18	Photomontages
74	5.29_Part 3 of 6	A	07/09/18	Photomontages
74	5.29_Part 4 of 6	A	07/09/18	Photomontages
74	5.29_Part 5 of 6	A	07/09/18	Photomontages
74	5.29_Part 6 of 6	A	07/09/18	Photomontages
75	5.30	A	07/09/18	Document 30 Arboricultural Impact Assessment
Volume 6 Consultation Report				
76	6.1	A	07/09/18	Consultation Report
77	6.2_Part 1 of 3	A	07/09/18	Consultation Report Appendices 1 - 8
78	6.2_Part 2 of 3	A	07/09/18	Consultation Report Appendices 9 - 21
79	6.2_Part 3 of 3	A	07/09/18	Consultation Report Appendices 22 - 41

Public Folder	Master Document List - Submissions Made to the Planning Inspectorate			
	Document	Version	Submission Date	Document Title
Volume 7 Other Reports				
80	7.1	A	07/09/18	Need Case
80	7.2	A	07/09/18	Strategic Options Report
80	7.3	A	07/09/18	History of the Project
81	7.4	A	07/09/18	Construction Environmental Management Plan (CEMP)
81	7.4.1.1	A	07/09/18	Document 7.4 - Figure 1 - Reinstatement Plans
81	7.4.2.1	A	07/09/18	Document 7.4 Appendix 1 - Schedule of Environmental Commitments
81	7.5	A	07/09/18	Outline Construction Traffic Management Plan
81	7.6	A	07/09/18	Public Rights of Way Management Plan
82	7.7	A	07/09/18	Biodiversity Mitigation Strategy
83	7.8	A	07/09/18	Archaeological Strategy
83	7.9	A	07/09/18	Noise & Vibration Management Plan
83	7.10	A	07/09/18	Outline Soil Management Plan
83	7.11	A	07/09/18	Outline Waste Management Plan
83	7.12	A	07/09/18	Outline Materials Management Plan
84	7.13	A	07/09/18	Enhancement Strategy
85	7.14	A	07/09/18	Planning Statement
85	7.15	A	07/09/18	Details of Other Consents and Licences
85	7.16	A	07/09/18	Design and Access Statement
86	7.17_Part 1 of 2	A	07/09/18	Design Report
87	7.17_Part 2 of 2	A	07/09/18	Design Report
88	7.18	A	07/09/18	Back-Check of Wylfa-Pentir Design Decisions
88	7.19	A	07/09/18	Design Guide
Volume 8 Welsh Translation				
89	8.1	A	07/09/18	Dogfen Lywio
89	8.2	A	07/09/18	Memorandwm Esboniadol
89	8.3	A	07/09/18	Datganiad o Resymau
89	8.4	A	07/09/18	Datganiad Cyllido
89	8.5	A	07/09/18	Dogfen Gyfarwyddyd Cynllunio
89	8.6	A	07/09/18	Crynodeb Annhechnegol o'r Datganiad Amgylcheddol
89	8.7	A	07/09/18	Aseiad o'r Effaith ar yr Iaith Gymraeg
89	8.8	A	07/09/18	Crynodeb o'r Adroddiad Ymgynghori
89	8.9	A	07/09/18	Crynodeb o'r Datganiad Cynllunio
89	8.1	A	07/09/18	Crynodeb o'r Adroddiad Dylunio
89	8.11	A	07/09/18	Hanes y Prosiect
Volume 9 Reference Documents				
90	9.1	A	07/09/18	Wylfa to Pentir Overhead Electricity Transmission Line – Route Corridor Identification Report (Oct 2012)
91	9.2	A	07/09/18	Wylfa to Pentir Preferred Route Corridor Selection Report (Oct 2015)
92	9.3	A	07/09/18	Wylfa to Pentir Route Options Report (Oct 2015)
93	9.4	A	07/09/18	Preferred Route Option Selection Report Wylfa to the Menai Crossing Area (Sep 2016)
94	9.5	A	07/09/18	Draft Route Alignment Report Wylfa to the Menai Crossing Area (Sep 2016)
95	9.6	A	07/09/18	Menai Strait Crossing Report (Sep 2016))
96	9.7.1	A	07/09/18	Historic Need Case 2012
96	9.7.2	A	07/09/18	Historic Need Case 2015
96	9.7.3	A	07/09/18	Historic Need Case 2016
97	9.8.1	A	07/09/18	Historic SoR 2012
97	9.8.2	A	07/09/18	Historic SoR 2015
97	9.8.3	A	07/09/18	Historic SoR 2016