

MONA OFFSHORE WIND PROJECT

Annex 7.2 to the Applicants response at the Procedural Deadline

Figure updates to address inconsistency between Onshore Works Plan and Environmental Statement figures - Reports

Deadline: Procedural Deadline

Application Reference: EN01037

Document Number: MOCNS-J3303-RPS-10234

Document Reference: S_PD_7.2

25 June 2024

F01



Image of an offshore wind farm

MONA OFFSHORE WIND PROJECT

Document status

Version	Purpose of document	Authored by	Reviewed by	Approved by	Review date
F01	Examination – Procedural Deadline	RPS	Mona Offshore Wind Ltd.	Mona Offshore Wind Ltd.	June 2024

Prepared by:

RPS

Prepared for:

Mona Offshore Wind Ltd.

Contents

1	FIGURE UPDATES TO ADDRESS INCONSISTENCY BETWEEN ONSHORE WORKS PLAN AND ENVIRONMENTAL STATEMENT FIGURES - REPORTS.....	1
1.1	Introduction	1
1.2	Response.....	1
1.3	Updated figures	1

Figures

Figure 1.1:	Figure 1.1 of HRA Stage 2 ISAA Part One: Introduction and Background (APP-031).....	2
Figure 1.2:	Figure 1.1 of Technical Engagement Plan (APP-041).....	3

Glossary

Term	Meaning
Applicant	Mona Offshore Wind Limited.
Development Consent Order (DCO)	An order made under the Planning Act 2008 granting development consent for one or more Nationally Significant Infrastructure Project (NSIP).
Mona Offshore Wind Project	The Mona Offshore Wind Project is comprised of both the generation assets, offshore and onshore transmission assets, and associated activities.
The Planning Inspectorate	The agency responsible for operating the planning process for Nationally Significant Infrastructure Projects.

1 Figure updates to address inconsistency between Onshore Works Plan and Environmental Statement figures - Reports

1.1 Introduction

1.1.1.1 This document has been prepared in response to Section 51 advice from the Examining Authority in relation to the figures included in the Mona Offshore Wind Project DCO application. The point from the Section 51 advice is as follows:

Para 12.1 of the Application Letter (Doc A1) states that the proposed operational access to the existing National Grid Substation from the proposed Mona Substation access from Glascoed Road has been assessed in the Environmental Impact Assessment (EIA) but part of it is not currently shown on all the EIA figures.

The Inspectorate advises the Applicant to undertake a thorough audit of the ES figures to ensure that they are consistent with the Onshore Work Plan (Doc B3). Amended ES figures should be provided, together with a list of the figures subject to amendment.

1.2 Response

1.2.1.1 The Applicant has updated the figures of the Environmental Statement and other relevant application document figures as appropriate to show the proposed operational access to the existing National Grid Substation from the proposed Mona Substation access road. The figures that have been updated is provided below.

1.3 Updated figures

MONA OFFSHORE WIND PROJECT

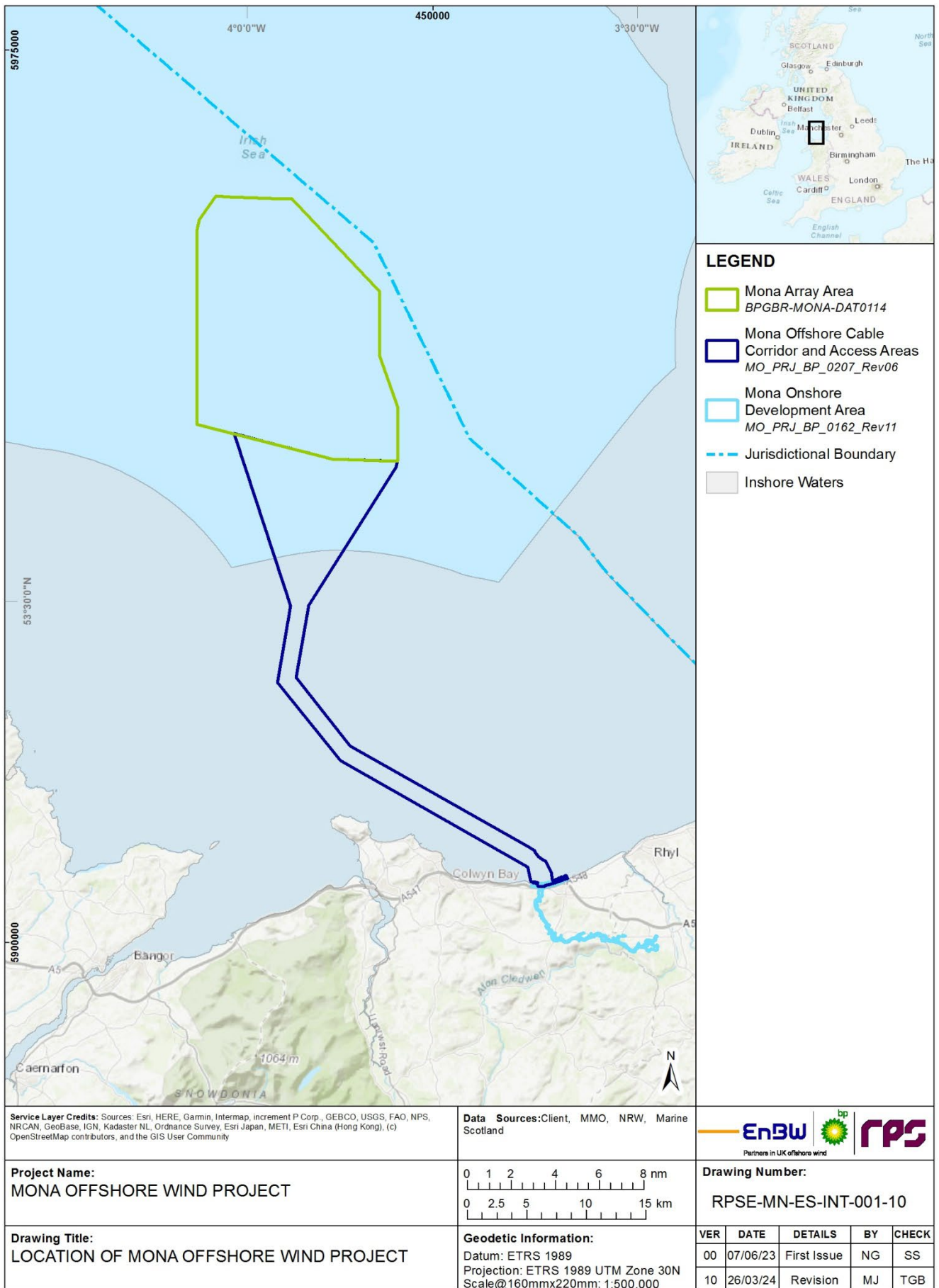


Figure 1.1: Figure 1.1 of HRA Stage 2 ISAA Part One: Introduction and Background (APP-031).

MONA OFFSHORE WIND PROJECT

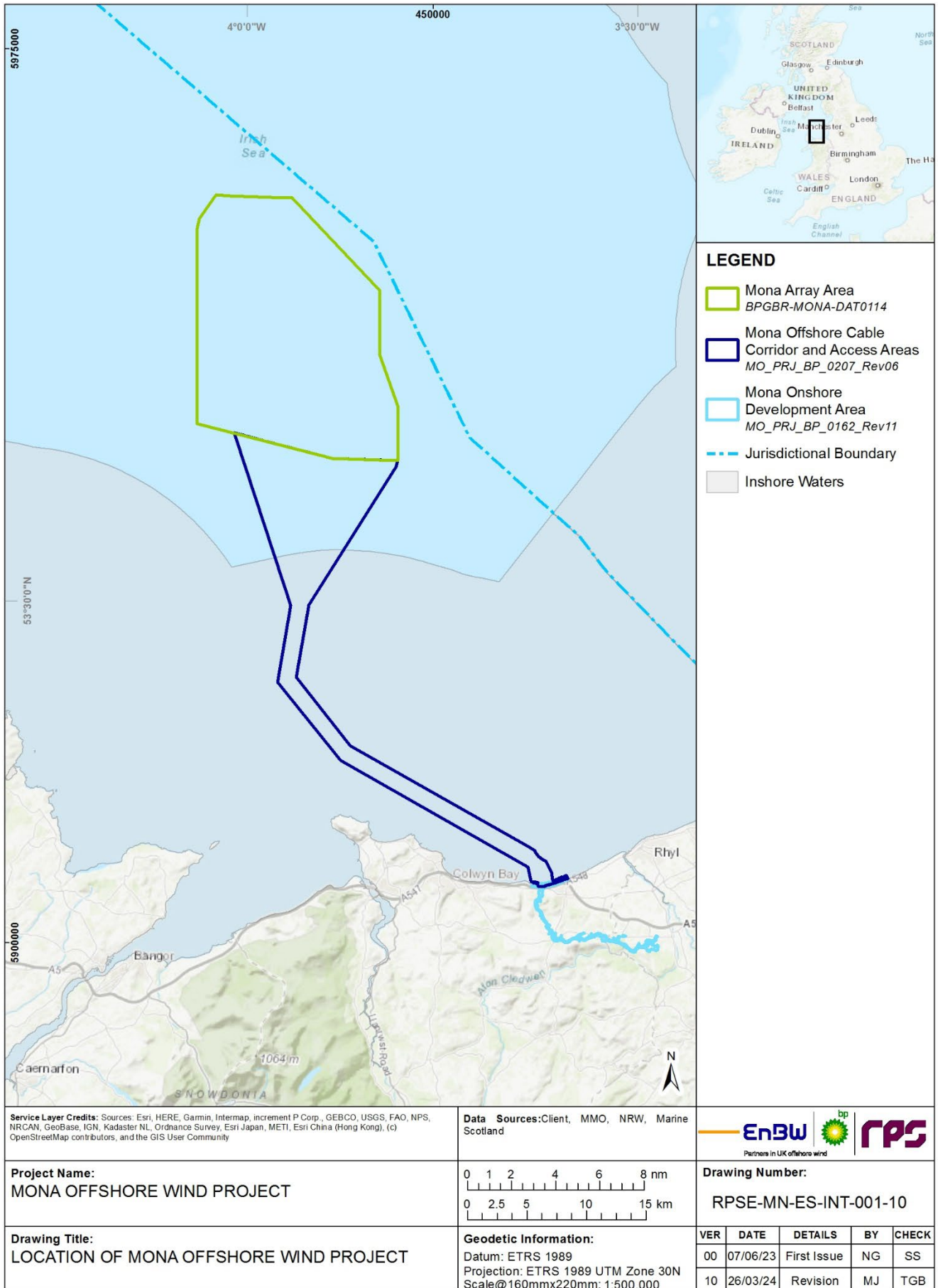


Figure 1.2: Figure 1.1 of Technical Engagement Plan (APP-041)