

West Burton Recommendations for Examining Authority's Site Visit

West Lindsey District Council (WLDC) undertook a site visit of Cottam, Gate Burton and West Burton on the 12th and 13th of June 2023. During the site visit, several points of interest around the schemes were considered. This note and accompanying drawing provides a summary of these points of interest for the Cottam scheme which may be of use to the Examining Authority when their site visit.

The Points of Interest (PoI) are shown on the West Burton access location plan which shows the eight vehicle access points for the construction of the solar panels. Also included as part of this submission is the access to the West Burton cabling routes, of which there are 19 access points.

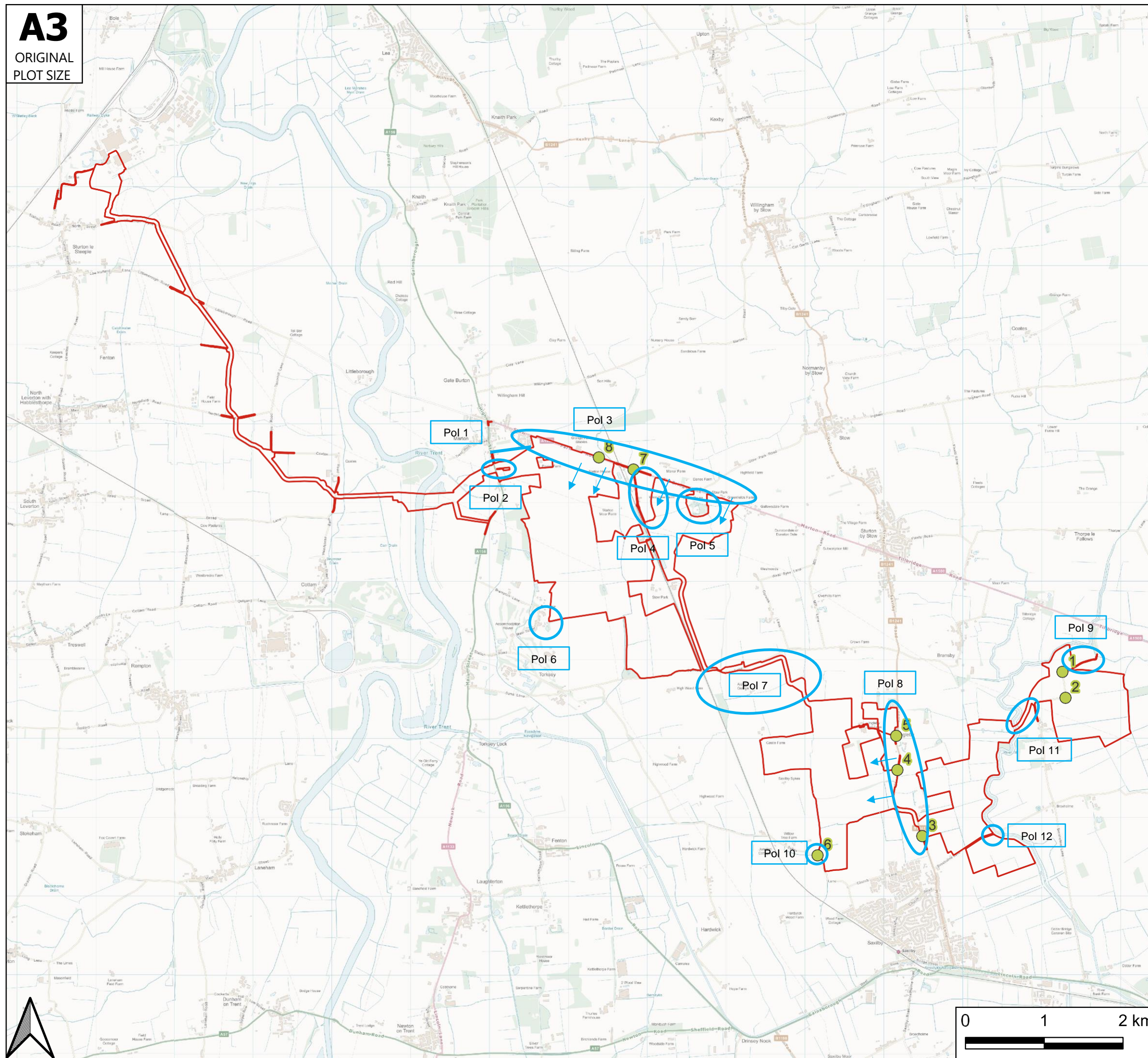
Points of Interest (PoI)

This section provides a brief summary of the PoI that were noted during the site visit. These are not listed in any particular order other than working from the northwest of the scheme and ending in the southeast.

- PoI 1 – View of solar panels along Broxholme Lane.
- PoI 2 – View of Grid Connection Corridor along A156 – interaction with Gate Burton and Cottam shared grid connection.
- PoI 3 – Accesses along Till Bridge Lane and Stowe Park Road. Two lane traffic with national speed limit and railroad crossing at Stow Park.
- PoI 4 – Proposed Stow Park solar development. This solar farm is considered EIA development and is surrounded by the West Burton scheme.
- PoI 5 – The medieval bishop's palace and deer park, Stow Park scheduled monument.
- PoI 6 – Interaction of development with the village of Brampton residential receptors.
- PoI 7 – cable route connection between West Burton 2 and 3 along Cowdale Lane. Impact during construction.
- PoI 8 – Accesses along Sturton Road and views onto field to the west of the Sturton Road. Will incur heavy construction traffic and will result in long term impact on views.
- PoI 9 – Access into West Burton 1 from Tillbridge Lane.
- PoI 10 – Access into West Burton 2 from Sykes Lane.
- PoI 11 – Cable connection between West Burton 1 and 2 and impact on Broxholme during construction.
- PoI 12 – View of Grid Connection Corridor Along the Public Right of Way. Allows understanding of the character of the area and its relationship with surrounding features/uses.

A3

ORIGINAL
PLOT SIZE



Pol X

Points of Interest



View

