

RWE

MASDAR 

**RWE Renewables UK Dogger Bank
South (West) Limited**

**RWE Renewables UK Dogger Bank
South (East) Limited**

**Dogger Bank South Offshore
Wind Farms**

Works Plan (Offshore) (Revision 3)

Volume 2

Pre-Examination Procedural Deadline

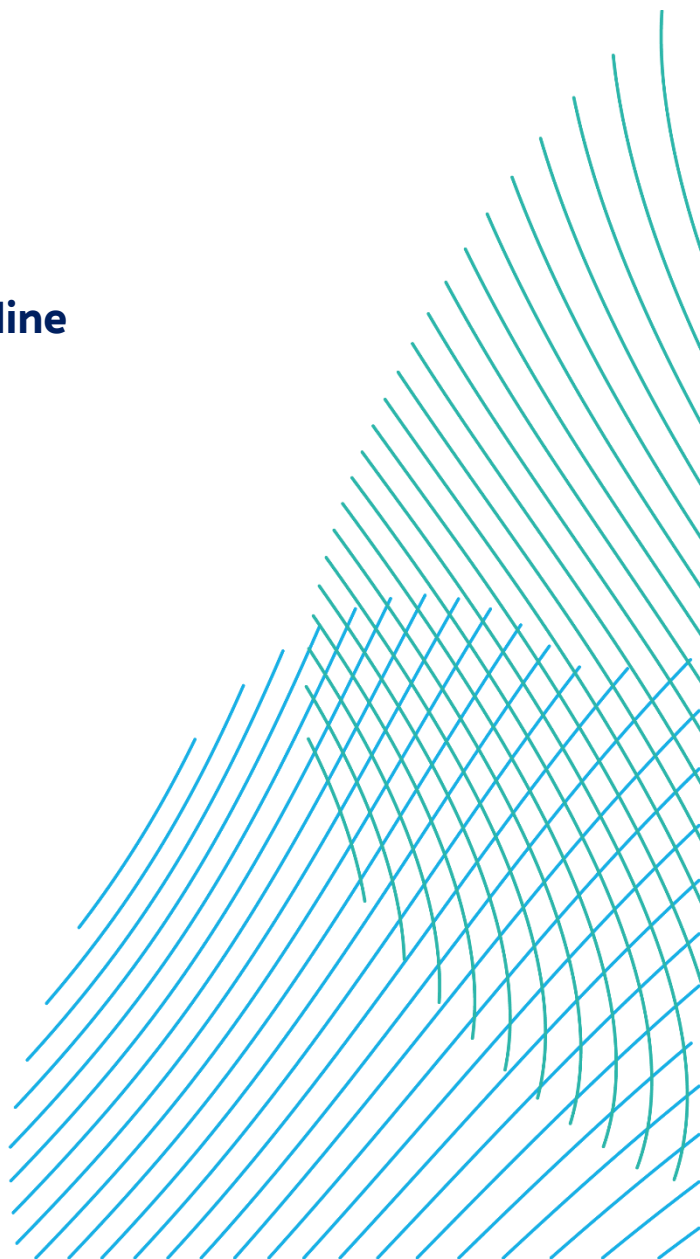
October 2024

Application Reference: 2.5

APFP Regulation: 5(2)(j)

Revision: 03

Unrestricted



Company:	RWE Renewables UK Dogger Bank South (West) Limited and RWE Renewables UK Dogger Bank South (East) Limited	Asset:	Development		
Project:	Dogger Bank South Offshore Wind Farms	Sub Project/Package:	Consents		
Document Title or Description:	Works Plan (Offshore) (Revision 3)				
Document Number:	004525725-02	Contractor Reference Number:	N/A		
<p><i>COPYRIGHT © RWE Renewables UK Dogger Bank South (West) Limited and RWE Renewables UK Dogger Bank South (East) Limited, 2024. All rights reserved.</i></p> <p><i>This document is supplied on and subject to the terms and conditions of the Contractual Agreement relating to this work, under which this document has been supplied, in particular:</i></p> <p>LIABILITY</p> <p><i>In preparation of this document RWE Renewables UK Dogger Bank South (West) Limited and RWE Renewables UK Dogger Bank South (East) Limited has made reasonable efforts to ensure that the content is accurate, up to date and complete for the purpose for which it was contracted. RWE Renewables UK Dogger Bank South (West) Limited and RWE Renewables UK Dogger Bank South (East) Limited makes no warranty as to the accuracy or completeness of material supplied by the client or their agent.</i></p> <p><i>Other than any liability on RWE Renewables UK Dogger Bank South (West) Limited and RWE Renewables UK Dogger Bank South (East) Limited detailed in the contracts between the parties for this work RWE Renewables UK Dogger Bank South (West) Limited and RWE Renewables UK Dogger Bank South (East) Limited shall have no liability for any loss, damage, injury, claim, expense, cost or other consequence arising as a result of use or reliance upon any information contained in or omitted from this document.</i></p> <p><i>Any persons intending to use this document should satisfy themselves as to its applicability for their intended purpose.</i></p> <p><i>The user of this document has the obligation to employ safe working practices for any activities referred to and to adopt specific practices appropriate to local conditions.</i></p>					
Rev No.	Date	Status/Reason for Issue	Author	Checked by	Approved by
01	February 2024	Draft for PINS / TCE Submission	Wardell Armstrong	RWE	RWE
02	June 2024	Final for DCO Application	Wardell Armstrong	RWE	RWE
03	October 2024	Submission at Pre-Examination Procedural Deadline	Wardell Armstrong	RWE	RWE

Revision Change Log			
Rev No.	Page	Section	Description
01	N/A	N/A	Draft for PINS / TCE Submission
02	N/A	N/A	Submission for DCO Application
03	4 to 5	N/A	The Works Plan (Offshore) has been updated to address inconsistencies and apparent omissions which were noted in the Section 55 Checklist provided by the Planning Inspectorate

