



Awel y Môr Offshore Wind Farm

Category 6: Environmental Statement

**Volume 6, Annex 2.3: LVIA
Visualisations - Figure 2.20 (Viewpoint
3: Glascoed Rd)**

Deadline 8

Date: 15 March 2023

Revision: B

Document Reference: 8.59

Application Reference: 6.6.2.3.3



REVISION	DATE	STATUS/ REASON FOR ISSUE	AUTHOR	CHECKED BY	APPROVED BY
A	April 2022	ES	OPEN	SLR/GoBe	RWE
B	March 2023	Deadline 8	OPEN	SLR/GoBe	RWE

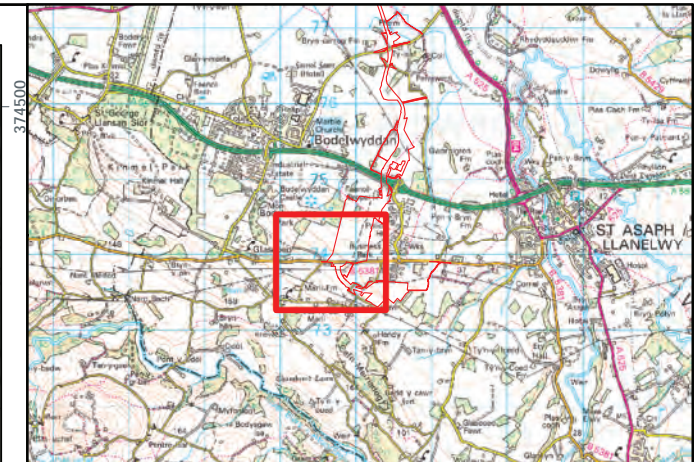
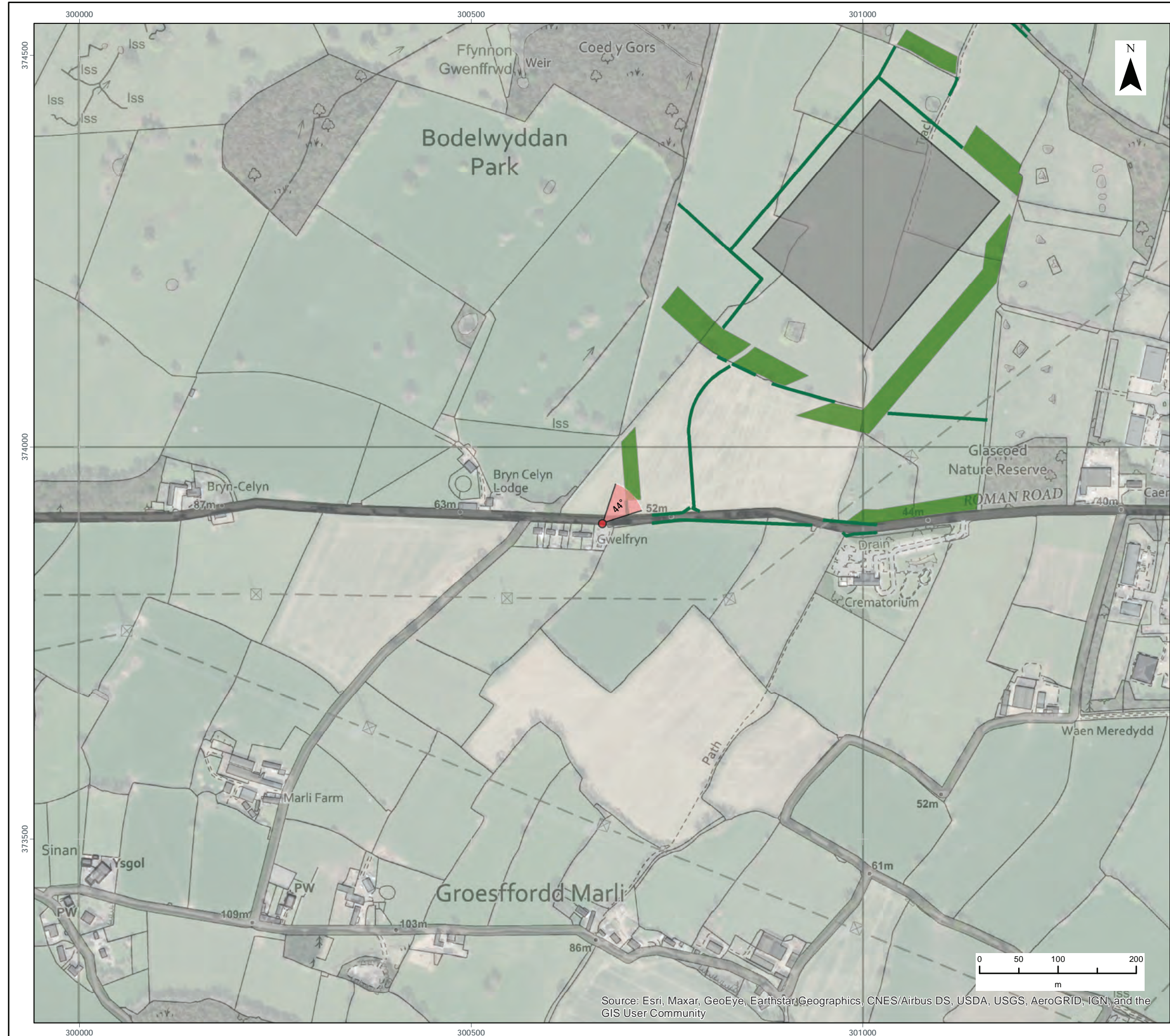
[Redacted]

RWE Renewables UK Swindon Limited

Windmill Hill Business Park
Whitehill Way
Swindon
Wiltshire SN5 6PB
T +44 (0)8456 720 090

[Redacted]

Registered office:
RWE Renewables UK Swindon Limited
Windmill Hill Business Park
Whitehill Way
Swindon



- LEGEND**
- Maximum Parameter Extent
 - Proposed Woodland
 - Proposed Hedgerow
 - Photomontage Viewpoint Location (53.5 degrees HFOV)

Note: Proposed woodland mostly comprises indigenous woodland species with a mix of faster growing 'nurse' species and slower growing 'core' species. Nurse species, such as alder, birch and black poplar would grow quicker and would provide shelter to bring on core species, such as oak, elm and sycamore. After 15 years the Proposed Woodland is estimated to be approximately 7-10m in height (as shown on the year 15 visualisations at an average of 8.5m).

Data Source: Contains OS data © Crown copyright and database right (2021). © Crown copyright. All rights reserved. (2021). Ordnance Survey Licence 0100031673. Contains public sector information licensed under the terms of the Open Government Licence v 3.0.

PROJECT TITLE:
AWEL Y MÔR OFFSHORE WINDFARM

FIGURE TITLE:
**Viewpoint 3:
Glascoed Rd**

VER	DATE	REMARKS	Drawn	Checked
1	04/02/2022	For Issue	TH	SC

FIGURE NUMBER:
Figure 2.20a

SCALE: 1:5,000 | PLOT SIZE: A3 | DATUM: OSGB 1936 | PROJECTION: BNG



Source: Esri, Maxar, GeoEye, Earthstar/Geographics, CNES/Airbus DS, USDA, USGS, AeroGRID, IGN, and the GIS User Community



TYPE 3 VISUALISATION: Baseline Photograph

View flat at a comfortable arm's length

OS reference: 300665 E 373901 N
Eye level: 59.8 m AOD
Direction of view: 44 °
Dist. to Substn. Zone: 0.39 km

Horizontal field of view: 53.5° (planar projection)
Principal distance: 812.5mm
Paper size: 841 x 297 mm (half A1)
Correct printed image size: 820 x 260 mm

Camera: Canon EOS 6D
Lens: Canon EF 50mm f/1.4
Camera height: 1.5m
Date and time: 31/03/2021 13:59

Enlargement Factor: 150% @A1

© Crown copyright. All rights reserved (2021). Licence number 0100031673

Figure 2.20b
Viewpoint 3: Glascoed Road
AWEL Y MÔR OFFSHORE WINDFARM



Maximum Parameter Extent

TYPE 3 VISUALISATION: Photomontage of AIS Substation at Year 0

View flat at a comfortable arm's length

OS reference: 300665 E 373901 N
 Eye level: 59.8 m AOD
 Direction of view: 44 °
 Dist. to Substn. Zone: 0.39 km

Horizontal field of view: 53.5° (planar projection)
 Principal distance: 812.5mm
 Paper size: 841 x 297 mm (half A1)
 Correct printed image size: 820 x 260 mm

Camera: Canon EOS 6D
 Lens: Canon EF 50mm f/1.4
 Camera height: 1.5m
 Date and time: 31/03/2021 13:59

Enlargement Factor: 150% @A1

Note: The OnSS maximum parameter includes a maximum building height of 15m plus an additional 0.8m in height to account for potential differences in finished ground level relative to the position of the OnSS GIS option within the OnSS AIS platform, see limitations described in Volume 3, Chapter 2, section 2.7.

© Crown copyright. All rights reserved (2021). Licence number 0100031673



Maximum Parameter Extent

TYPE 3 VISUALISATION: Photomontage of GIS Substation at Year 0

View flat at a comfortable arm's length

OS reference: 300665 E 373901 N
 Eye level: 59.8 m AOD
 Direction of view: 44 °
 Dist. to Substn. Zone: 0.39 km

Horizontal field of view: 53.5° (planar projection)
 Principal distance: 812.5mm
 Paper size: 841 x 297 mm (half A1)
 Correct printed image size: 820 x 260 mm

Camera: Canon EOS 6D
 Lens: Canon EF 50mm f/1.4
 Camera height: 1.5m
 Date and time: 31/03/2021 13:59

Enlargement Factor: 150% @A1

Note: The OnSS maximum parameter includes a maximum building height of 15m plus an additional 0.8m in height to account for potential differences in finished ground level relative to the position of the OnSS GIS option within the OnSS AIS platform, see limitations described in Volume 3, Chapter 2, section 2.7.

© Crown copyright. All rights reserved (2021). Licence number 0100031673



Maximum Parameter Extent

TYPE 3 VISUALISATION: Photomontage of AIS Substation at Year 15

View flat at a comfortable arm's length

OS reference: 300665 E 373901 N
Eye level: 59.8 m AOD
Direction of view: 44 °
Dist. to Substn. Zone: 0.39 km

Horizontal field of view: 53.5° (planar projection)
Principal distance: 812.5mm
Paper size: 841 x 297 mm (half A1)
Correct printed image size: 820 x 260 mm

Camera: Canon EOS 6D
Lens: Canon EF 50mm f/1.4
Camera height: 1.5m
Date and time: 31/03/2021 13:59

Enlargement Factor: 150% @A1

Note: The OnSS maximum parameter includes a maximum building height of 15m plus an additional 0.8m in height to account for potential differences in finished ground level relative to the position of the OnSS GIS option within the OnSS AIS platform, see limitations described in Volume 3, Chapter 2, section 2.7.

© Crown copyright. All rights reserved (2021). Licence number 0100031673

Figure 2.20e
Viewpoint 3: Glascoed Road
AWEL Y MÔR OFFSHORE WINDFARM



Maximum Parameter Extent

TYPE 3 VISUALISATION: Photomontage of GIS Substation at Year 15

View flat at a comfortable arm's length

OS reference: 300665 E 373901 N
Eye level: 59.8 m AOD
Direction of view: 44 °
Dist. to Substn. Zone: 0.39 km

Horizontal field of view: 53.5° (planar projection)
Principal distance: 812.5mm
Paper size: 841 x 297 mm (half A1)
Correct printed image size: 820 x 260 mm

Camera: Canon EOS 6D
Lens: Canon EF 50mm f/1.4
Camera height: 1.5m
Date and time: 31/03/2021 13:59

Enlargement Factor: 150% @A1

Note: The OnSS maximum parameter includes a maximum building height of 15m plus an additional 0.8m in height to account for potential differences in finished ground level relative to the position of the OnSS GIS option within the OnSS AIS platform, see limitations described in Volume 3, Chapter 2, section 2.7.

© Crown copyright. All rights reserved (2021). Licence number 0100031673

Errata List

Year Labels

In response to ExQ1.10.33, the Applicant would like to confirm that the visualisations should have been labelled “Year 1” where they currently are labelled “Year 0”.



RWE Renewables UK Swindon Limited

Windmill Hill Business Park
Whitehill Way
Swindon
Wiltshire SN5 6PB
T +44 (0)8456 720 090

Registered office:
RWE Renewables UK Swindon Limited
Windmill Hill Business Park
Whitehill Way
Swindon