

APPENDIX 8C: NOISE MONITORING

APPENDIX 8C: NOISE MONITORING

8C.1 Noise Survey Instrumentation

8C.1.1 All measurements were taken at approximately 1.2-1.5 m above ground level, and in accordance with the requirements of British Standard (BS) 7445 (BSI, 1991 and 2003). All monitoring locations were positioned at least 3.5 m from any reflecting surface, other than the ground (i.e. free-field). Details of ongoing activities and typical noise sources in the area were recorded during visits to the monitoring locations to set up and collect the measurement equipment.

8C.1.2 All SLMs used were Class 1 precision instruments. Each was programmed to log a number of parameters including L_{Aeq} , L_{A90} , L_{A10} and L_{Amax} values, in 15-minute contiguous intervals.

8C.1.3 The calibration levels were checked prior to and following all measurements. No significant drift, more than 0.2 dB, occurred. Full calibration details are available upon request.

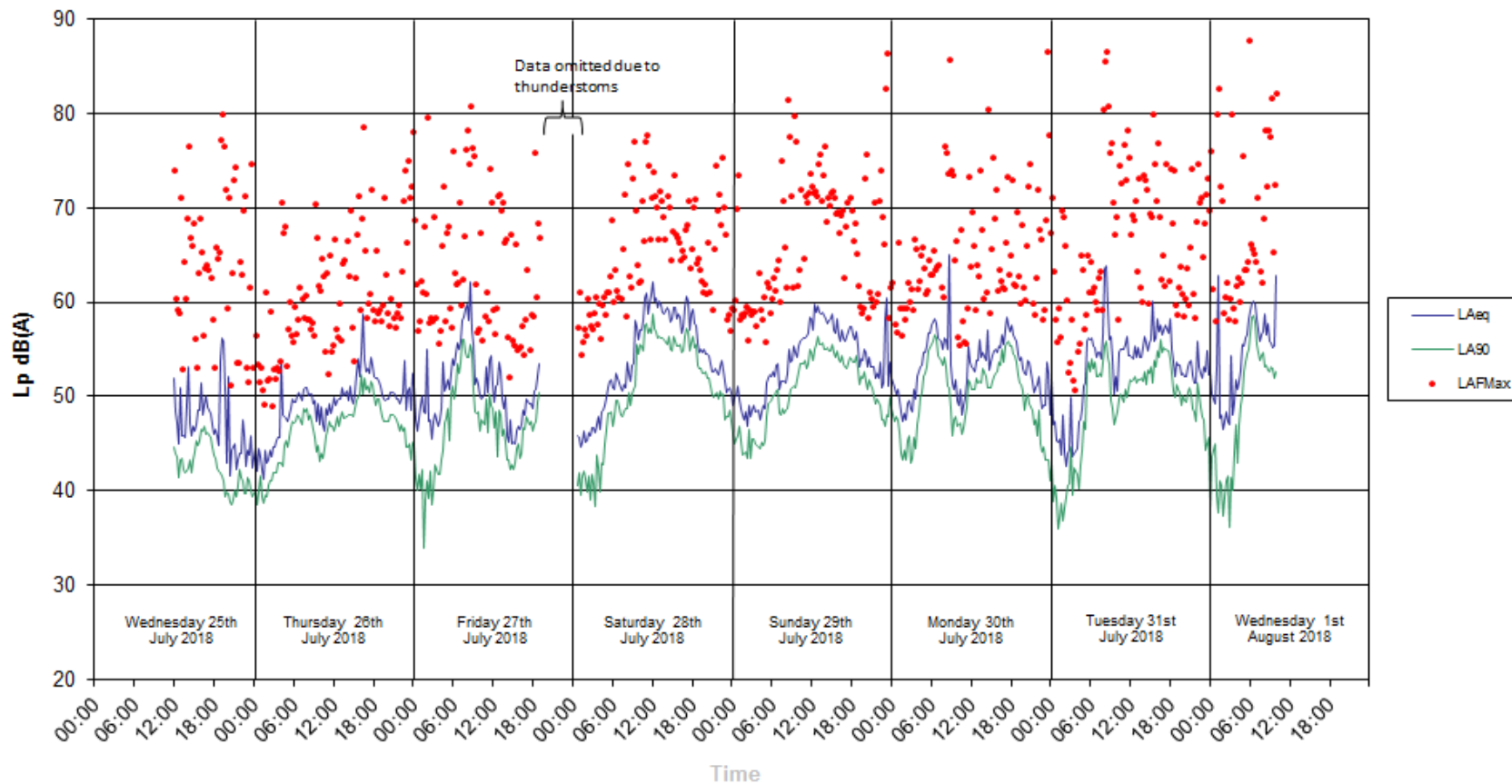
8C.1.4 Details of the meters used in the assessment are given in Table 8C.1.

Table 8C.1: Measurement equipment

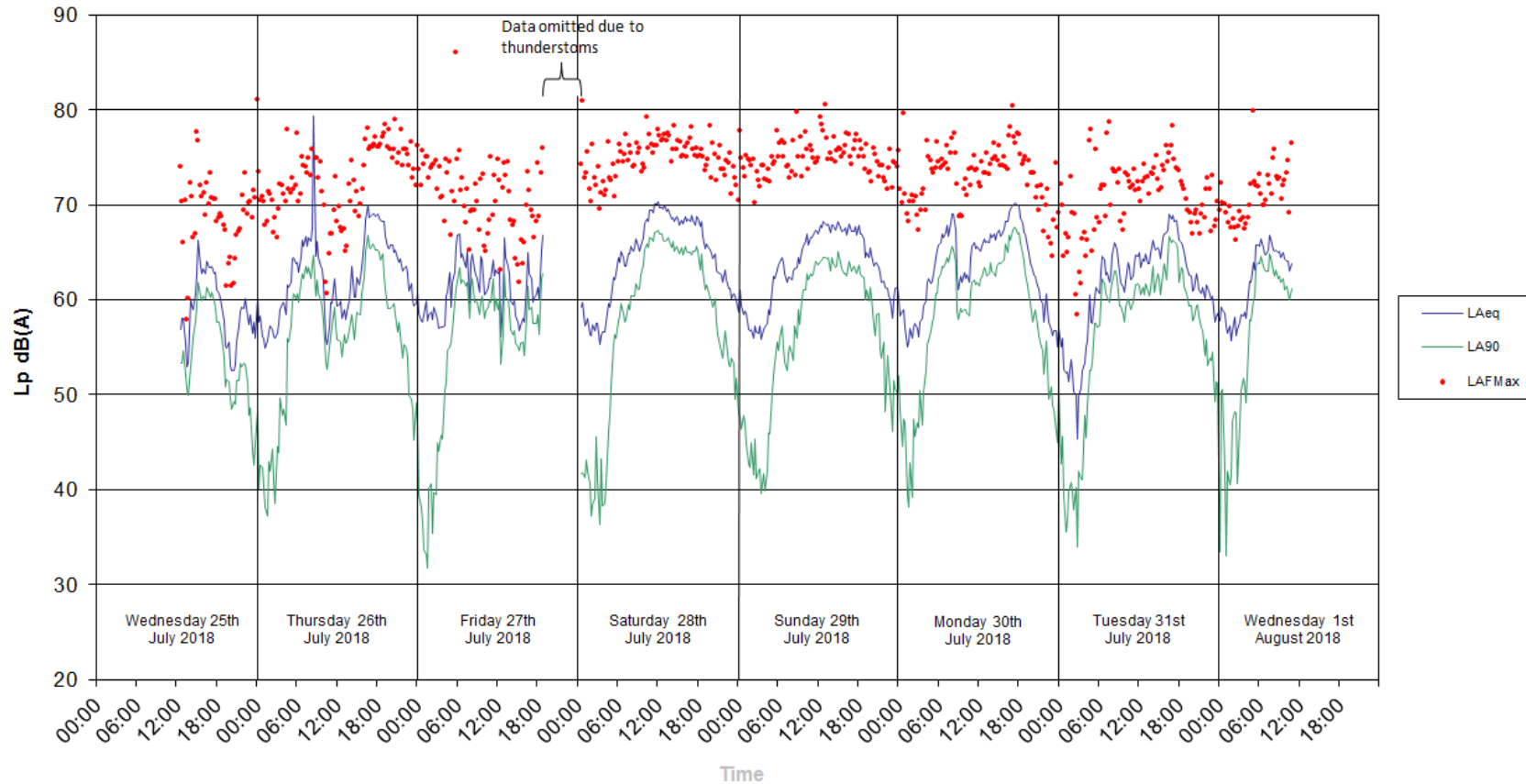
MONITORING LOCATION	MANUFACTURER	SLM MODEL	SLM SERIAL NUMBER
LT1	Rion	NL-52	01021280
LT2	Rion	NL-52	01021281
LT3	Rion	NL-52	01021278
ST1 and ST2	Rion	NL-52	01021282

8C.2 Time History Plots

Monitoring Location LT1 - Poplar Farm



Monitoring Location LT2 - Cress Cottage



Monitoring Location LT3 - Southern Site Boundary

