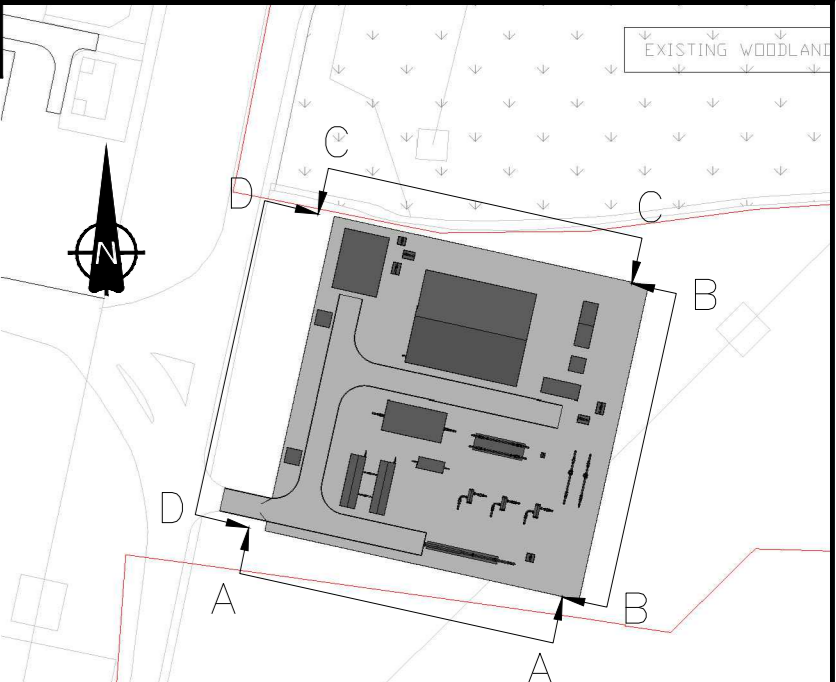
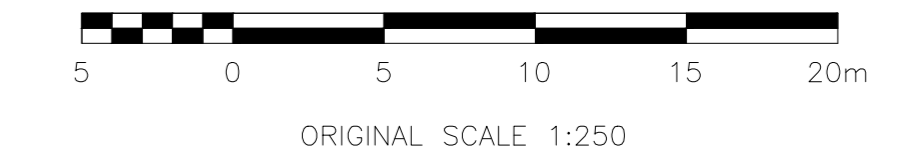
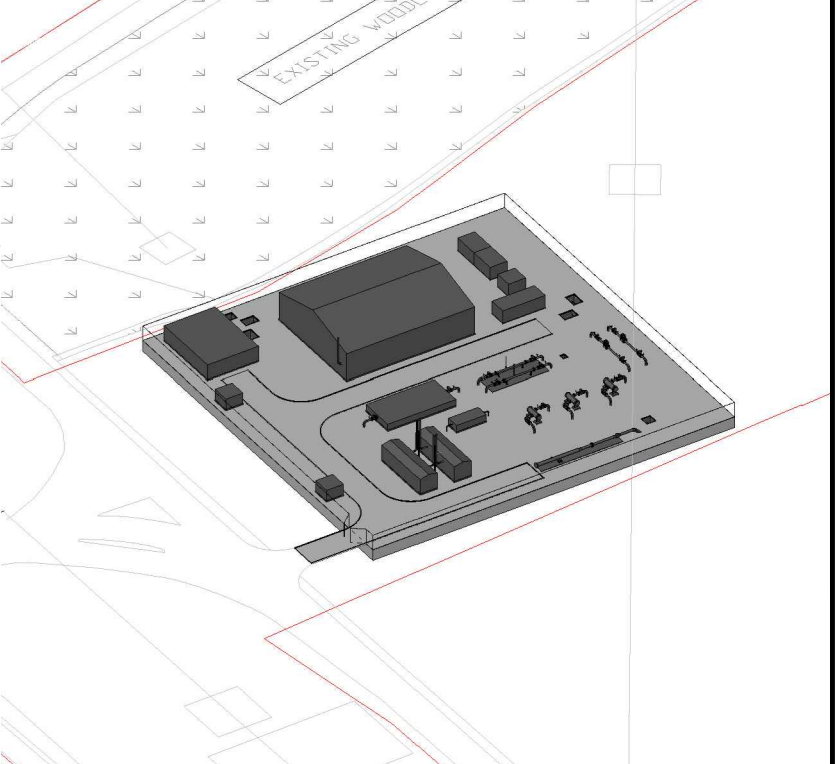


SECTION A-A SOUTH ELEVATION



PLAN VIEW - SCALE 1:2000

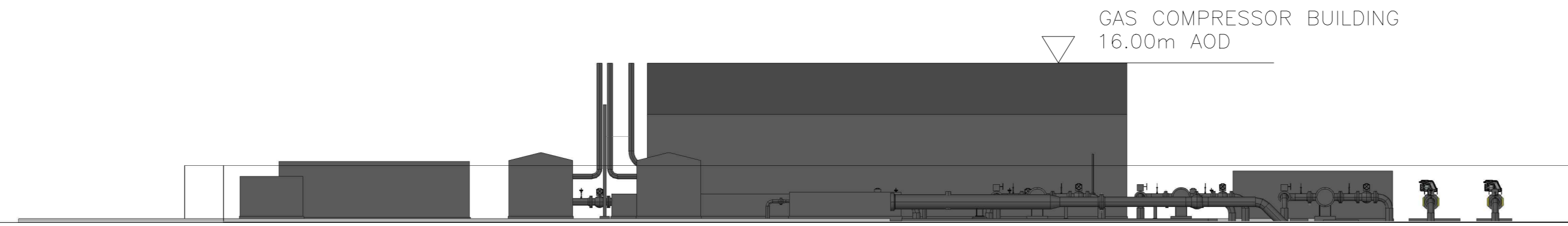


ISOMETRIC VIEW - SCALE 1:1500

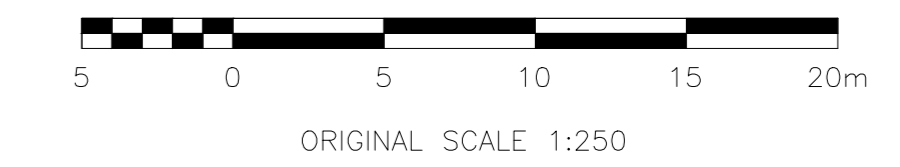
NOTES:  
DETAIL OF THE ELECTRICITY GENERATING STATION EQUIPMENT LOCATED TO THE WEST OF THE GAS RECEIVING FACILITY HAS BEEN OMITTED FROM THIS ELEVATION DRAWING

LIGHTING COLUMNS HAVE BEEN EXCLUDED. LOCATION, SIZE AND TYPE OF LIGHTING WILL BE ASSESSED AT DETAILED DESIGN.

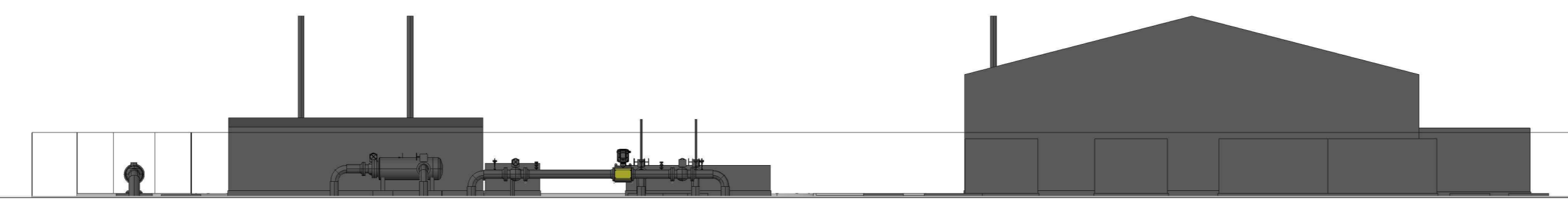
GROUND LEVEL +6.00m AOD



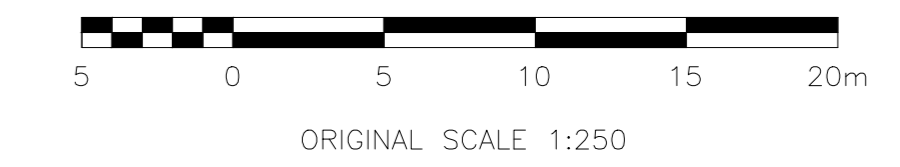
SECTION B-B EASTERN ELEVATION



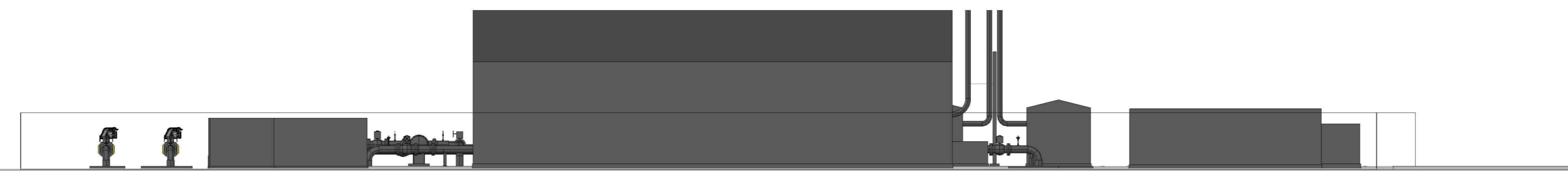
GROUND LEVEL +6.00m AOD



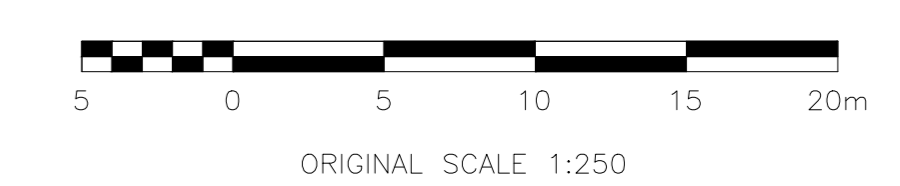
SECTION C-C NORTHERN ELEVATION



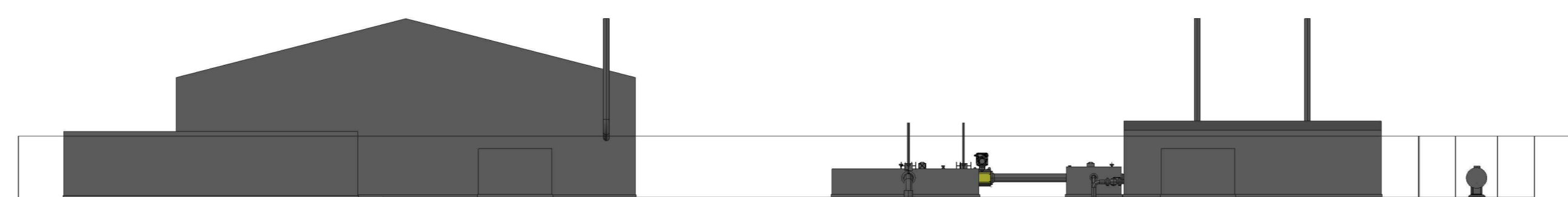
GROUND LEVEL +6.00m AOD



SECTION D-D WESTERN ELEVATION



GROUND LEVEL +6.00m AOD



Infrastructure Planning (Applications: Prescribed Forms and Procedure) Regulations 2009 - Regulation 5(2) (c)

REV	DATE	BY	DESCRIPTION	CHK	APP
02	09/01/2019	SPS	Second issue submitted for Examination Deadline 5	RM	ES
01	04/04/2018	SPS	Final issue	RM	ES

DRAWING STATUS: SUBMISSION FOR REFERENCE

**wsp**  
Westbrook Mills, Borough Road, Godalming, GU7 2AZ, UK  
T+ 44 (0) 1483 528 400, F+ 44 (0) 1483 528 989  
wsp.com

**drax**

PROJECT:  
The Drax Power (Generating Station) Order

TITLE:  
Application Document Reference 2 6B - Indicative Gas Receiving Facility and Gas Compressor Building Elevations

SCALE AS SHOWN	DRAWN BY	CHECKED BY	APPROVED BY
AS SHOWN	B. SETHORP	R. MCKIN	B. SETHORP

PROJECT NO.	DATE	REV.
70037047	09/01/2019	
70037047-2.6B-EL		02

© WSP UK Ltd

File name: I:\03\0306\03\0306\CONCENTRAL DATA\PROJECTS\70037047\2.6B-EL.dwg - 03\06\2018 11:11:12 by 20664, Sam