

Norfolk Boreas Offshore Wind Farm

Appendix 23.3a

Pink-footed goose maps for Broadland SPA

Environmental Statement

Volume 3

Applicant: Norfolk Boreas Limited
Document Reference: 6.3.23.3a
RHDHV Reference: PB5640-006-2303a
Pursuant to APFP Regulation: 5(2)(a)

Date: June 2019
Revision: Version 1
Author: Royal HaskoningDHV

Photo: Ormonde Offshore Wind Farm

Date	Issue No.	Remarks / Reason for Issue	Author	Checked	Approved
23/02/2019	01D	First draft for Norfolk Boreas Limited review	GC	CD	AD/JL
29/04/2019	01F	Final for DCO Submission	GC	CD	JL



Table of Contents

1	Sensitivity maps	1
2	Interpreting the maps	1
3	Broadland (UK9009253)	1
3.1	Roost locations and feeding distribution.	1

Plates

Plate 3.1 Feeding distribution (1986/87 to 2012/13 - all records) of Pink-footed Geese in relation to the Broadland SPA.	2
Plate 3.2 Feeding distribution (2008/09 to 2012/13 - new records) of Pink-footed Geese in relation to the Broadland SPA.	3

1 Sensitivity maps

1. For each Special Protection Area (SPA) for which the site is designated and selected important roost sites, two maps are presented; one showing the distribution of all feeding records (from the period 1986/87 to 2012/13) and one showing the distribution of feeding records from the most recent five years (2008/09 to 2012/13).
2. Key:
 1. Sensitivity Index represented by four graduated dark blue symbols (dots).
 2. 1km squares for which no quantitative data exists but geese were known to be present (represented by small red symbols (dots)).
 3. The SPA boundary (thick red line).
 4. Important roosts either within the SPA boundary (if known) or other nearby waterbodies represented by green symbols (dots).
 5. 20km line surrounding the SPA boundary (black line).

2 Interpreting the maps

3. The maps show the distribution of feeding geese based on available data. There are fewer records from the most recent period (from 2008/09 to 2012/13) partly due to the shorter time period (five years) and partly due to the reduction in the number of geese being ringed in recent years and a subsequent reduction in the number of sightings.
4. However, at some sites, a reduction in feeding records may also represent an absence, or reduction in number of geese. The maps should therefore be interpreted in conjunction with results from any available local surveys, recent roost count data, annual IGC reports (e.g. Mitchell 2011), a review of goose use of SPAs (Mitchell & Hall 2012) and the Waterbird Review Series reports for Pink-footed Goose (Mitchell & Hearn 2004).

3 Broadland (UK9009253)

3.1 Roost locations and feeding distribution.

5. The two main Pink-footed Goose roosts within Broadland are Horsey Mere and Berney Marshes (Plate 1). Birds from there generally remain close to the roost sites when feeding, moving mainly along the coast rather than inland. The main concentration is around Horsey Mere, though some move as far south as north Suffolk.

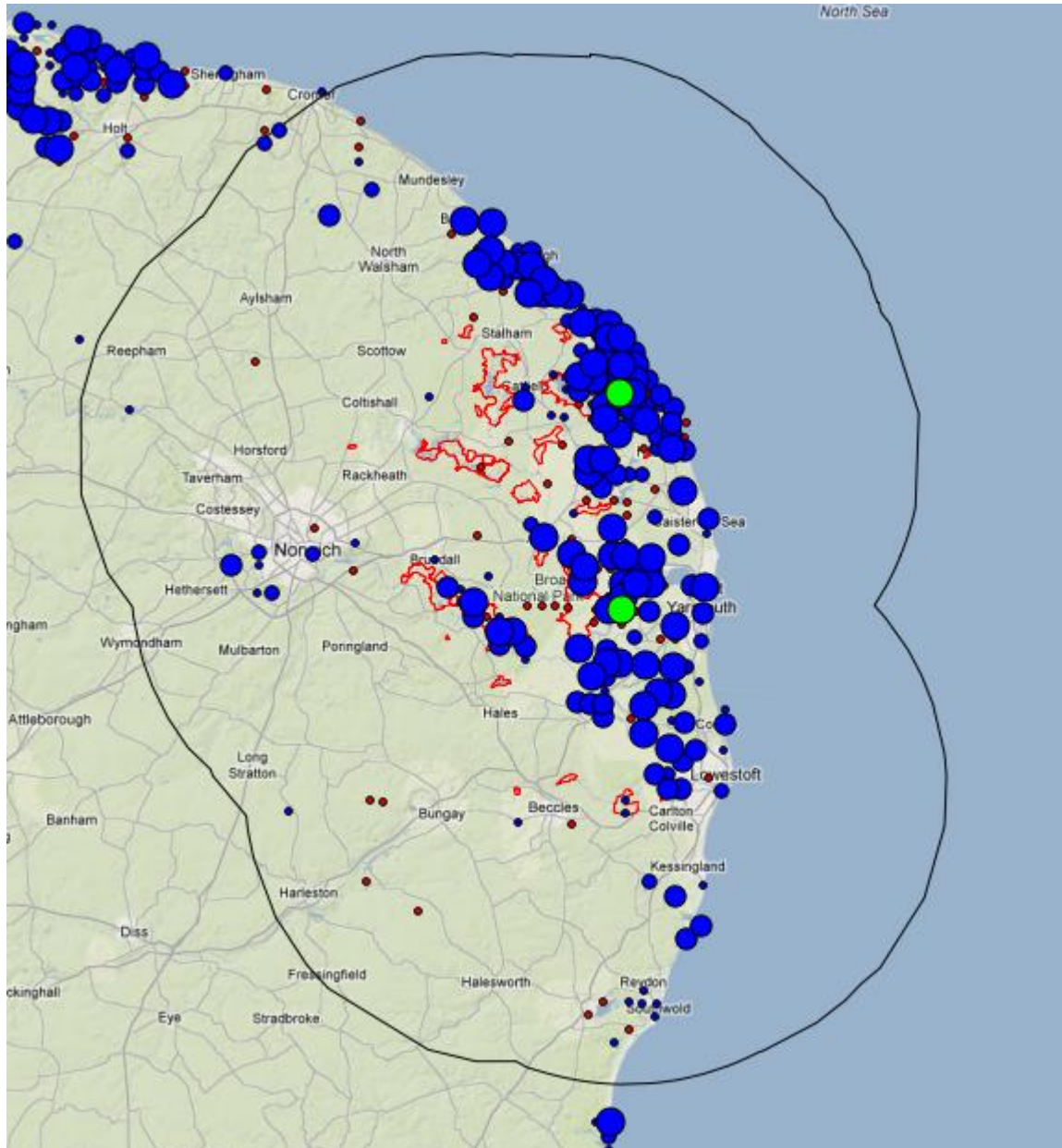


Plate 3.1 Feeding distribution (1986/87 to 2012/13 - all records) of Pink-footed Geese in relation to the Broadland SPA.

6. The data for the most recent five years (Plate 3.2) show that during this period little change has taken place in the main feeding areas of birds roosting within Broadland.

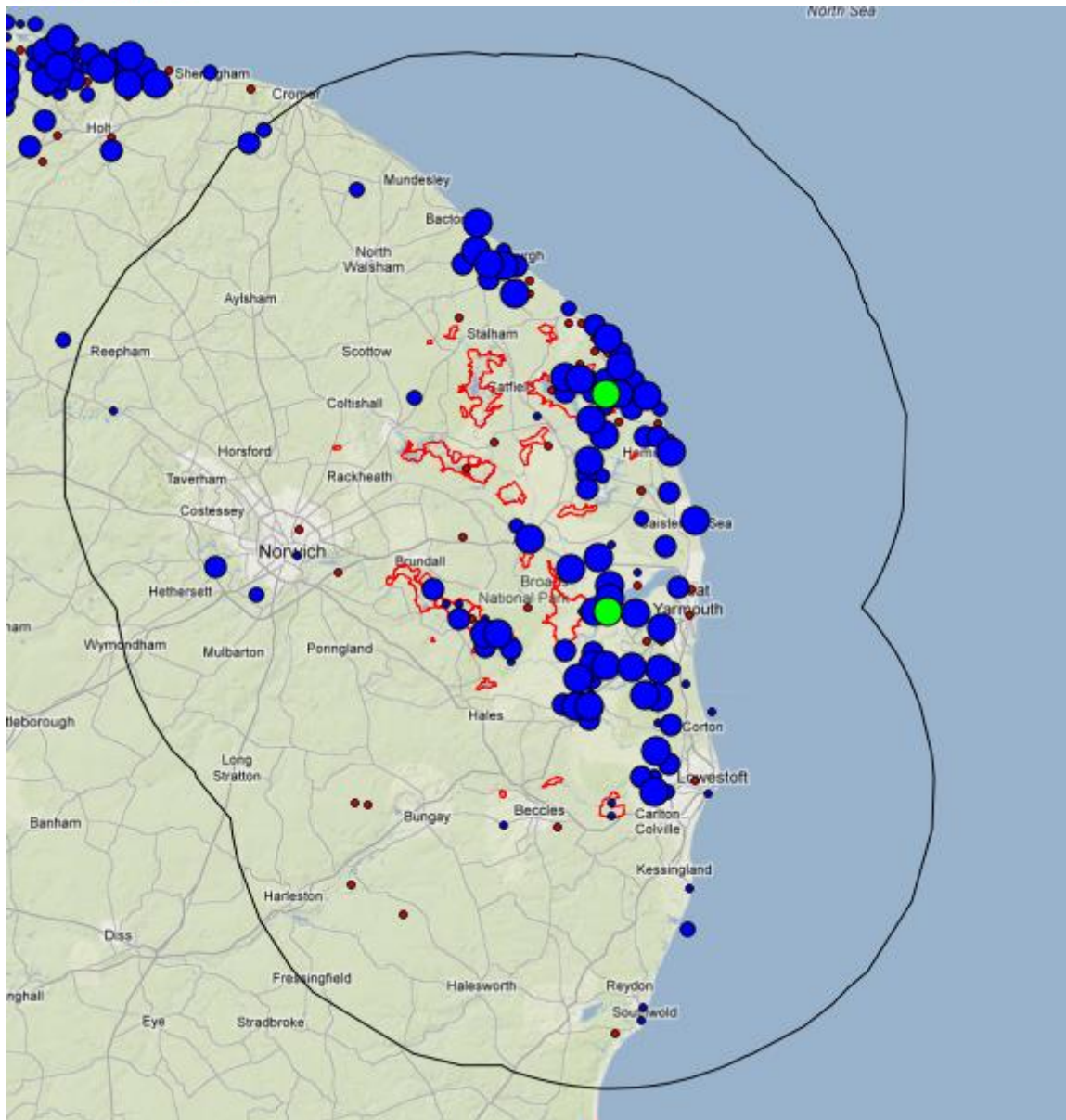


Plate 3.2 Feeding distribution (2008/09 to 2012/13 - new records) of Pink-footed Geese in relation to the Broadland SPA.

This page is intentionally blank.