

Legend:

- Norfolk Boreas onshore red line boundary
- Landfall
 - Landfall zone
 - Landfall compound zone
 - Indicative landfall compound
- Onshore cable route
 - Onshore cable route
- Access
 - Construction access
 - Operation access
- Study area 500m
- Local authority boundary
- Registered park and garden ¹
- Conservation area ²
- National park ³
- National character area ³
- North Norfolk landscape character area ⁴

¹ Historic England, 2019
² Broadland Development Management Plan, 2015/ North Norfolk Local Development Framework, 2008/ Breckland Local Development Plan, 2012
³ Natural England, 2019
⁴ North Norfolk Landscape Character Assessment, 2018/ Broadland District Council LDF Landscape Character Assessment Supplementary Planning Document (SPD), 2013/ Breckland District Landscape Character Assessment, 2007

Project:	Report:
Norfolk Boreas	Environmental Statement

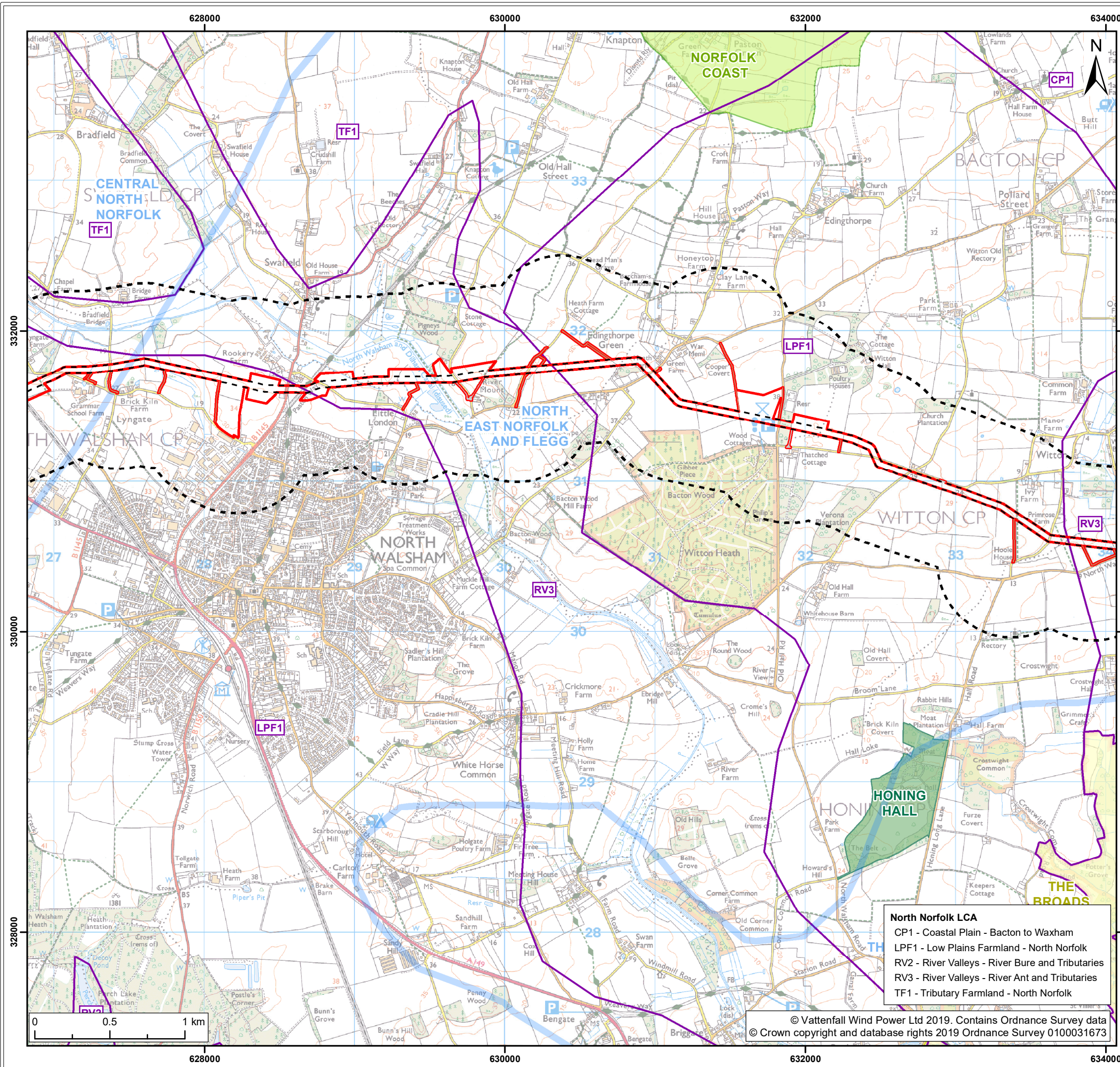
Title: Scenario 1
 Landscape Designations & Landscape Character Areas (map 1 of 9)

Figure: 29.2	Drawing No: PB5640-006-029-002				
Revision:	Date:	Drawn:	Checked:	Size:	Scale:
01	12/02/2019	LA	JP	A3	1:25,000
02	21/02/2019	LA	JP	A3	1:25,000

Co-ordinate system: British National Grid EPSG: 27700

VATTENFALL   **Royal HaskoningDHV**
 Enhancing Society Together

North Norfolk LCA
 CP1 - Coastal Plain - Bacton to Waxham
 LPF1 - Low Plains Farmland - North Norfolk
 RV3 - River Valleys - River Ant and Tributaries



Legend:

- Norfolk Boreas onshore red line boundary
- Study area 500m
- Local authority boundary
- Onshore cable route
- Registered park and garden ¹
- National park ³
- Construction access
- Operation access
- Area of outstanding natural beauty (AONB) ³
- National character area ³
- North Norfolk landscape character area ⁴

¹ Historic England, 2019
² Broadland Development Management Plan, 2015/ North Norfolk Local Development Framework, 2008/ Breckland Local Development Plan, 2012
³ Natural England, 2019
⁴ North Norfolk Landscape Character Assessment, 2018/ Broadland District Council LDF Landscape Character Assessment Supplementary Planning Document (SPD), 2013/ Breckland District Landscape Character Assessment, 2007

Project: Norfolk Boreas	Report: Environmental Statement
-----------------------------------	---

Title:
Scenario 1
Landscape Designations & Landscape Character Areas
(map 2 of 9)

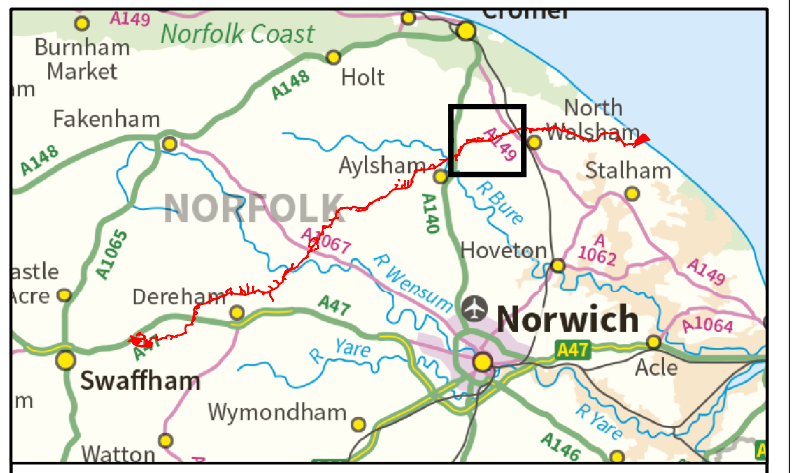
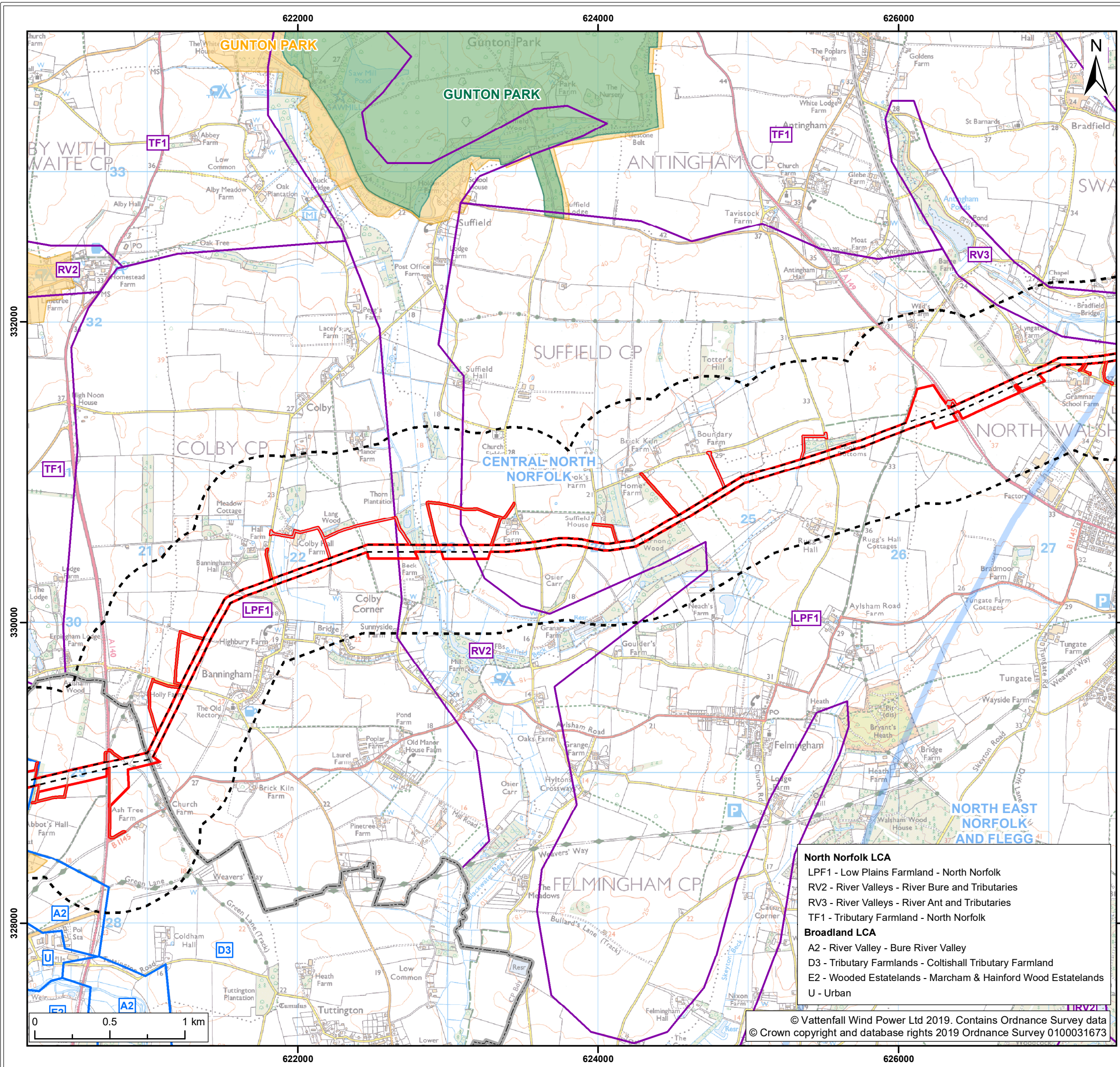
Figure: 29.2	Drawing No: PB5640-006-029-002				
Revision:	Date:	Drawn:	Checked:	Size:	Scale:
01	12/02/2019	LA	JP	A3	1:25,000
02	21/02/2019	LA	JP	A3	1:25,000

Co-ordinate system: British National Grid EPSG: 27700

VATTENFALL

Royal HaskoningDHV
Enhancing Society Together

North Norfolk LCA
 CP1 - Coastal Plain - Bacton to Waxham
 LPF1 - Low Plains Farmland - North Norfolk
 RV2 - River Valleys - River Bure and Tributaries
 RV3 - River Valleys - River Ant and Tributaries
 TF1 - Tributary Farmland - North Norfolk



Legend:

- Norfolk Boreas onshore red line boundary
- Study area 500m
- Local authority boundary
- Registered park and garden ¹
- Conservation area ²
- National character area ³
- Construction access
- Operation access
- North Norfolk landscape character area ⁴
- Broadland landscape character area ⁴

Onshore cable route

- Onshore cable route

Access

¹ Historic England, 2019
² Broadland Development Management Plan, 2015/ North Norfolk Local Development Framework, 2008/ Breckland Local Development Plan, 2012
³ Natural England, 2019
⁴ North Norfolk Landscape Character Assessment, 2018/ Broadland District Council LDF Landscape Character Assessment Supplementary Planning Document (SPD), 2013/ Breckland District Landscape Character Assessment, 2007

Project: Norfolk Boreas	Report: Environmental Statement
-----------------------------------	---

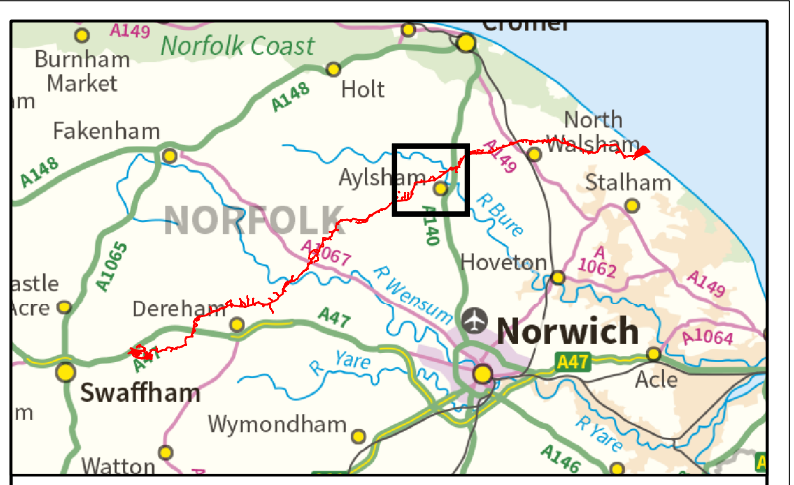
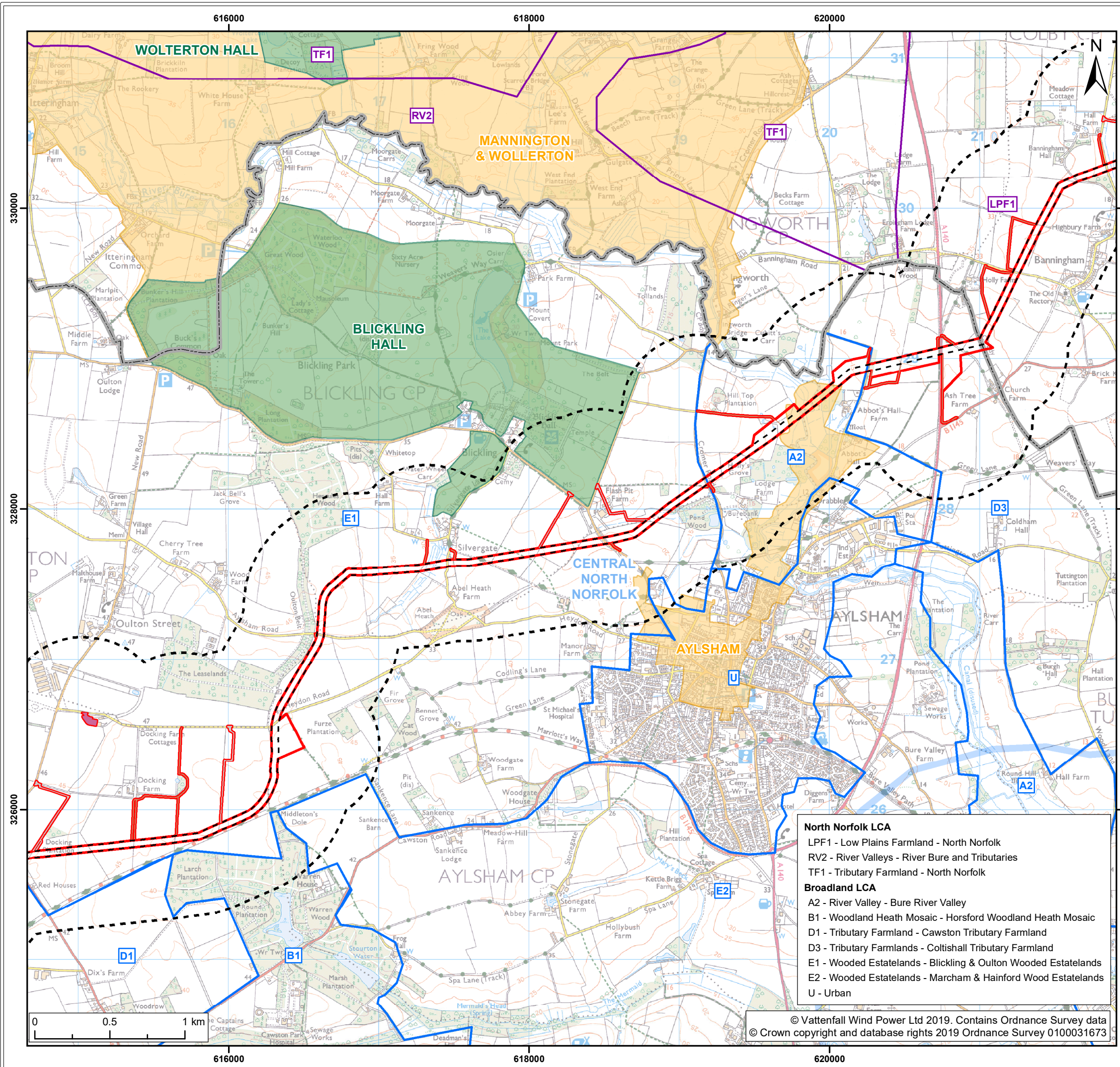
Title:
Scenario 1
Landscape Designations & Landscape Character Areas
(map 3 of 9)

Figure: 29.2	Drawing No: PB5640-006-029-002				
Revision:	Date:	Drawn:	Checked:	Size:	Scale:
01	12/02/2019	LA	JP	A3	1:25,000
02	21/02/2019	LA	JP	A3	1:25,000

Co-ordinate system: British National Grid **EPSG:** 27700

- North Norfolk LCA**
- LPF1 - Low Plains Farmland - North Norfolk
 - RV2 - River Valleys - River Bure and Tributaries
 - RV3 - River Valleys - River Ant and Tributaries
 - TF1 - Tributary Farmland - North Norfolk
- Broadland LCA**
- A2 - River Valley - Bure River Valley
 - D3 - Tributary Farmlands - Coltishall Tributary Farmland
 - E2 - Wooded Estatelands - Marcham & Hainford Wood Estatelands
 - U - Urban





Legend:

- Norfolk Boreas onshore red line boundary
- Study area 500m
- Local authority boundary
- Onshore cable route
- Registered park and garden ¹
- Conservation area ²
- Cable logistics area
- National character area ³
- Construction access
- Operation access
- North Norfolk landscape character area ⁴
- Broadland landscape character area ⁴

¹ Historic England, 2019
² Broadland Development Management Plan, 2015/ North Norfolk Local Development Framework, 2008/ Breckland Local Development Plan, 2012
³ Natural England, 2019
⁴ North Norfolk Landscape Character Assessment, 2018/ Broadland District Council LDF Landscape Character Assessment Supplementary Planning Document (SPD), 2013/ Breckland District Landscape Character Assessment, 2007

Project: Norfolk Boreas	Report: Environmental Statement
-----------------------------------	---

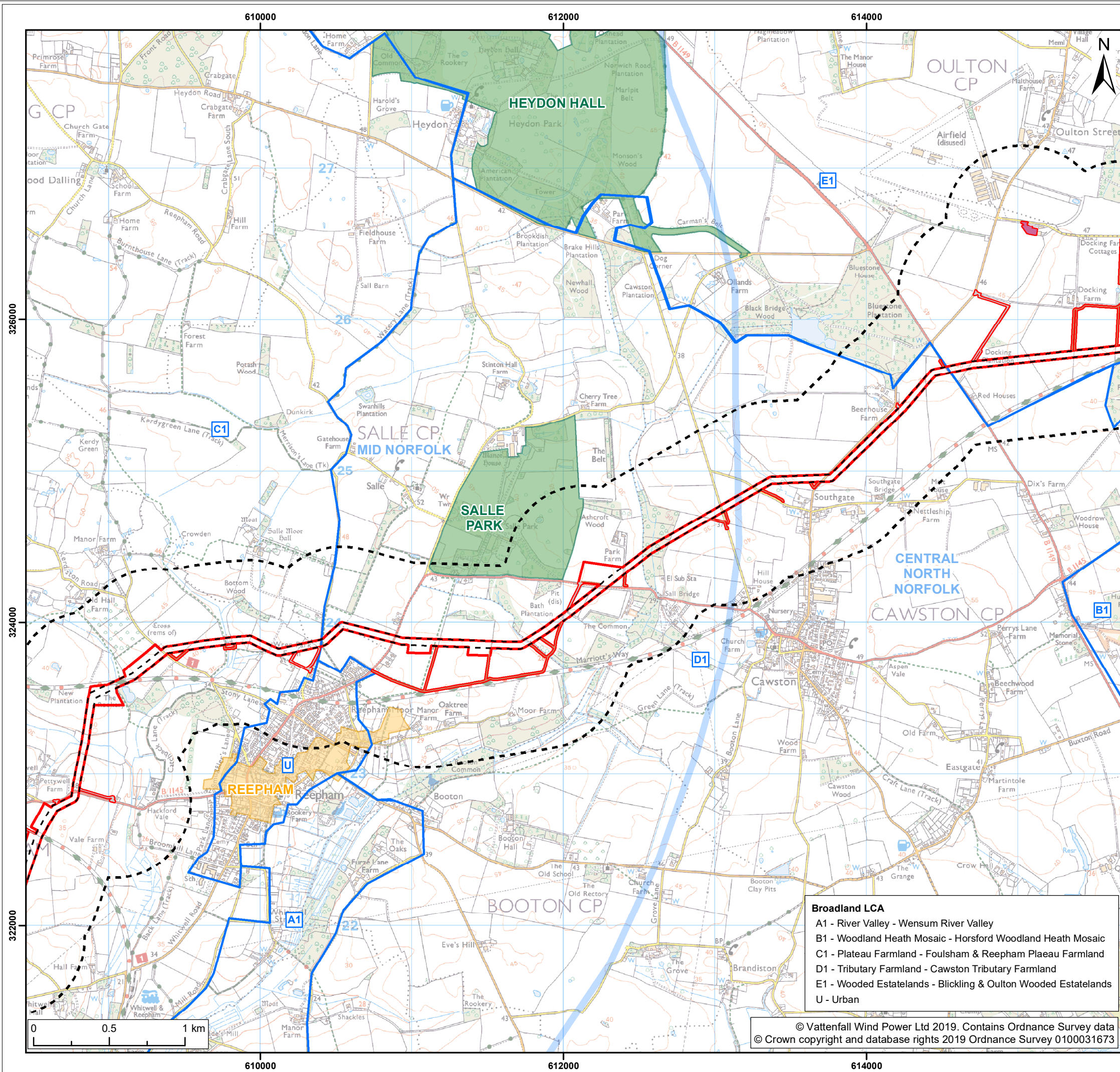
Title:	Scenario 1 Landscape Designations & Landscape Character Areas (map 4 of 9)
--------	--

Figure: 29.2	Drawing No: PB5640-006-029-002				
Revision:	Date:	Drawn:	Checked:	Size:	Scale:
01	12/02/2019	LA	JP	A3	1:25,000
02	21/02/2019	LA	JP	A3	1:25,000

Co-ordinate system: British National Grid **EPSG: 27700**

- North Norfolk LCA**
- LPF1 - Low Plains Farmland - North Norfolk
 - RV2 - River Valleys - River Bure and Tributaries
 - TF1 - Tributary Farmland - North Norfolk
- Broadland LCA**
- A2 - River Valley - Bure River Valley
 - B1 - Woodland Heath Mosaic - Horsford Woodland Heath Mosaic
 - D1 - Tributary Farmland - Cawston Tributary Farmland
 - D3 - Tributary Farmlands - Coltishall Tributary Farmland
 - E1 - Wooded Estatelands - Blickling & Oulton Wooded Estatelands
 - E2 - Wooded Estatelands - Marcham & Hainford Wood Estatelands
 - U - Urban





- Legend:**
- Norfolk Boreas onshore red line boundary
 - Study area 500m
 - Local authority boundary
 - Onshore cable route
 - Registered park and garden ¹
 - Conservation area ²
 - Cable logistics area
 - National character area ³
 - Construction access
 - Operation access
 - Broadland landscape character area ⁴

¹ Historic England, 2019
² Broadland Development Management Plan, 2015/ North Norfolk Local Development Framework, 2008/ Breckland Local Development Plan, 2012
³ Natural England, 2019
⁴ North Norfolk Landscape Character Assessment, 2018/ Broadland District Council LDF Landscape Character Assessment Supplementary Planning Document (SPD), 2013/ Breckland District Landscape Character Assessment, 2007

Project: Norfolk Boreas	Report: Environmental Statement
-----------------------------------	---

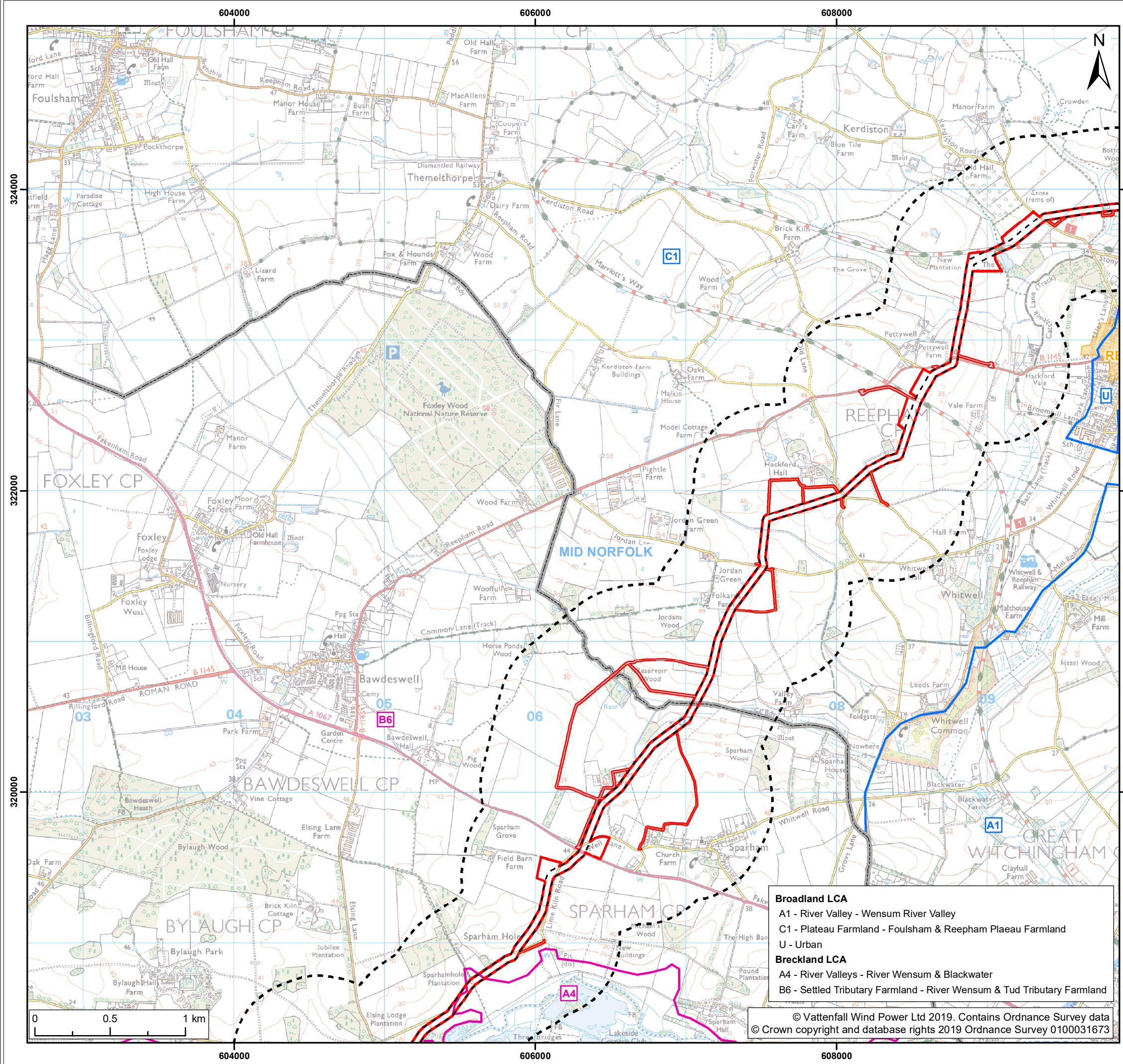
Title:
**Scenario 1
 Landscape Designations & Landscape Character Areas
 (map 5 of 9)**

Figure: 29.2	Drawing No: PB5640-006-029-002				
Revision:	Date:	Drawn:	Checked:	Size:	Scale:
01	12/02/2019	LA	JP	A3	1:25,000
02	21/02/2019	LA	JP	A3	1:25,000

Co-ordinate system: British National Grid EPSG: 27700



- Broadland LCA**
- A1 - River Valley - Wensum River Valley
 - B1 - Woodland Heath Mosaic - Horsford Woodland Heath Mosaic
 - C1 - Plateau Farmland - Foulsham & Reepham Plateau Farmland
 - D1 - Tributary Farmland - Cawston Tributary Farmland
 - E1 - Wooded Estatelands - Blickling & Oulton Wooded Estatelands
 - U - Urban



- Legend:**
- Norfolk Boreas onshore red line boundary
 - Study area 500m
 - Local authority boundary
 - Conservation area ²
 - National character area ³
 - Construction access
 - Operation access
 - Broadland landscape character area ⁴
 - Breckland landscape character area ⁴

¹ Historic England, 2019
² Broadland Development Management Plan, 2015/ North Norfolk Local Development Framework, 2008/ Breckland Local Development Plan, 2012
³ Natural England, 2019
⁴ North Norfolk Landscape Character Assessment, 2018/ Broadland District Council LDF Landscape Character Assessment Supplementary Planning Document (SPD), 2013/ Breckland District Landscape Character Assessment, 2007

Project: Norfolk Boreas	Report: Environmental Statement
-----------------------------------	---

Title:	Scenario 1 Landscape Designations & Landscape Character Areas (map 6 of 9)
---------------	--

Figure: 29.2	Drawing No: PB5640-006-029-002
--------------	--------------------------------

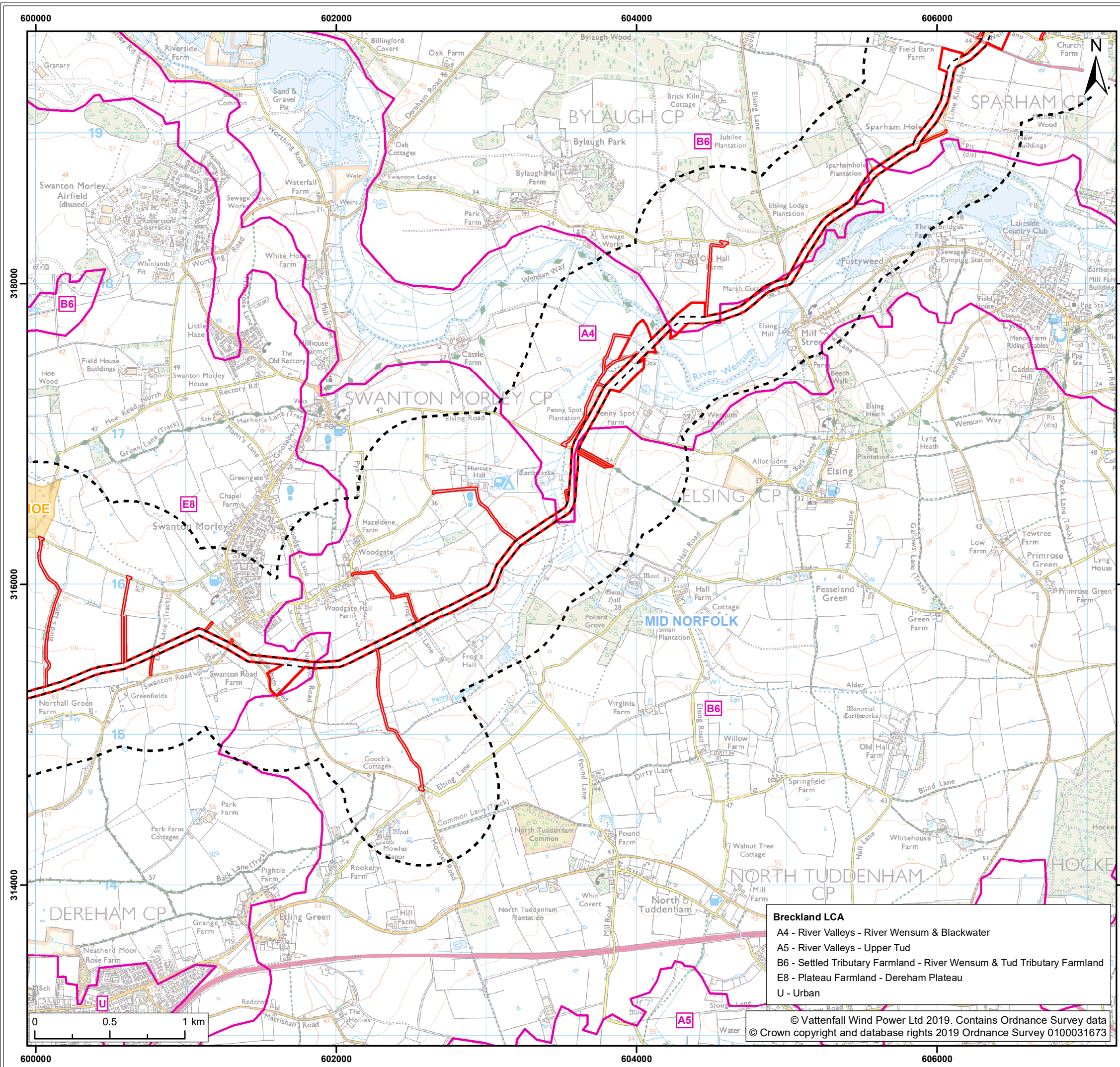
Revision:	Date:	Drawn:	Checked:	Size:	Scale:
01	12/02/2019	LA	JP	A3	1:25,000
02	21/02/2019	LA	JP	A3	1:25,000

Co-ordinate system: British National Grid **EPSG:** 27700

- Broadland LCA**
A1 - River Valley - Wensum River Valley
C1 - Plateau Farmland - Foulsham & Reepham Plateau Farmland
U - Urban
- Breckland LCA**
A4 - River Valleys - River Wensum & Blackwater
B6 - Settled Tributary Farmland - River Wensum & Tud Tributary Farmland

© Vattenfall Wind Power Ltd 2019. Contains Ordnance Survey data
© Crown copyright and database rights 2019 Ordnance Survey 0100031673





Breckland LCA
 A4 - River Valleys - River Wensum & Blackwater
 A5 - River Valleys - Upper Tud
 B6 - Settled Tributary Farmland - River Wensum & Tud Tributary Farmland
 E8 - Plateau Farmland - Dereham Plateau
 U - Urban

© Vattenfall Wind Power Ltd 2019. Contains Ordnance Survey data
 © Crown copyright and database rights 2019 Ordnance Survey 0100031673



- Legend:
- Norfolk Boreas onshore red line boundary
 - Study area 500m
 - Local authority boundary
 - Conservation area ²
 - National character area ³
 - Access
 - Operation access
 - Breckland landscape character area ⁴

¹ Historic England, 2019
² Broadland Development Management Plan, 2015/
 North Norfolk Local Development Framework, 2008/
 Breckland Local Development Plan, 2012
³ Natural England, 2019
⁴ North Norfolk Landscape Character Assessment, 2018/
 Broadland District Council LDF Landscape Character
 Assessment Supplementary Planning Document (SPD), 2013/
 Breckland District Landscape Character Assessment, 2007

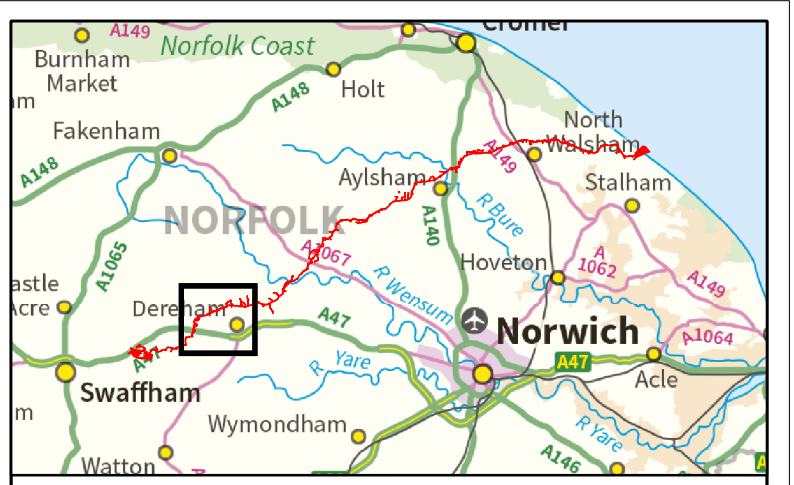
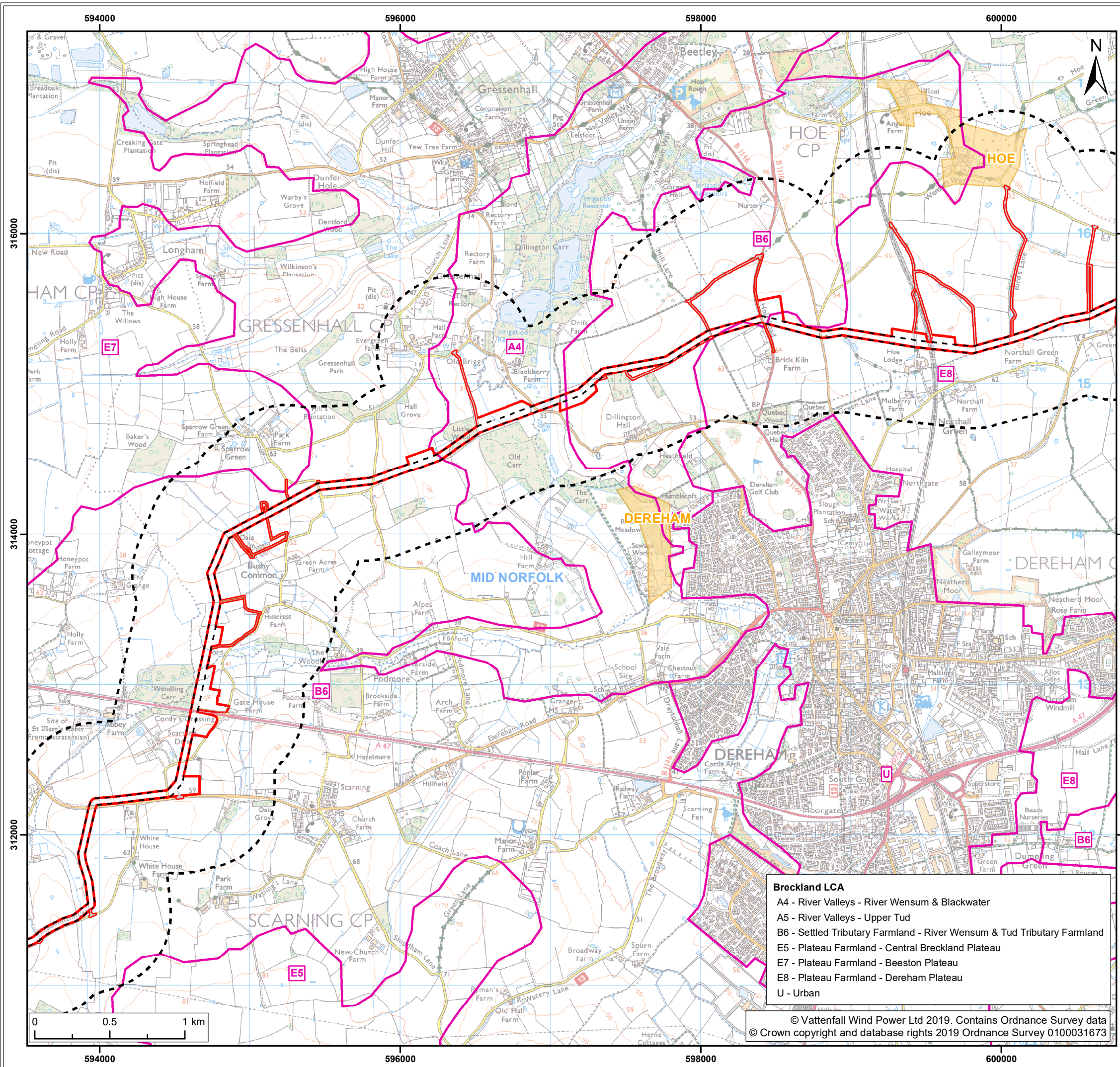
Project:	Report:
Norfolk Boreas	Environmental Statement

Title:
 Scenario 1
 Landscape Designations & Landscape Character Areas
 (map 7 of 9)

Figure: 29.2	Drawing No: PB5640-006-029-002				
Revision:	Date:	Drawn:	Checked:	Size:	Scale:
01	12/02/2019	LA	JP	A3	1:25,000
02	21/02/2019	LA	JP	A3	1:25,000

Co-ordinate system: British National Grid EPSG: 27700





- Legend:
- Norfolk Boreas onshore red line boundary
 - Study area 500m
 - Conservation area ²
 - National character area ³
 - Breckland landscape character area ⁴
 - Local authority boundary
 - Access
 - Construction access
 - Operation access

¹ Historic England, 2019
² Broadland Development Management Plan, 2015/ North Norfolk Local Development Framework, 2008/ Breckland Local Development Plan, 2012
³ Natural England, 2019
⁴ North Norfolk Landscape Character Assessment, 2018/ Broadland District Council LDF Landscape Character Assessment Supplementary Planning Document (SPD), 2013/ Breckland District Landscape Character Assessment, 2007

Project: Norfolk Boreas
 Report: Environmental Statement

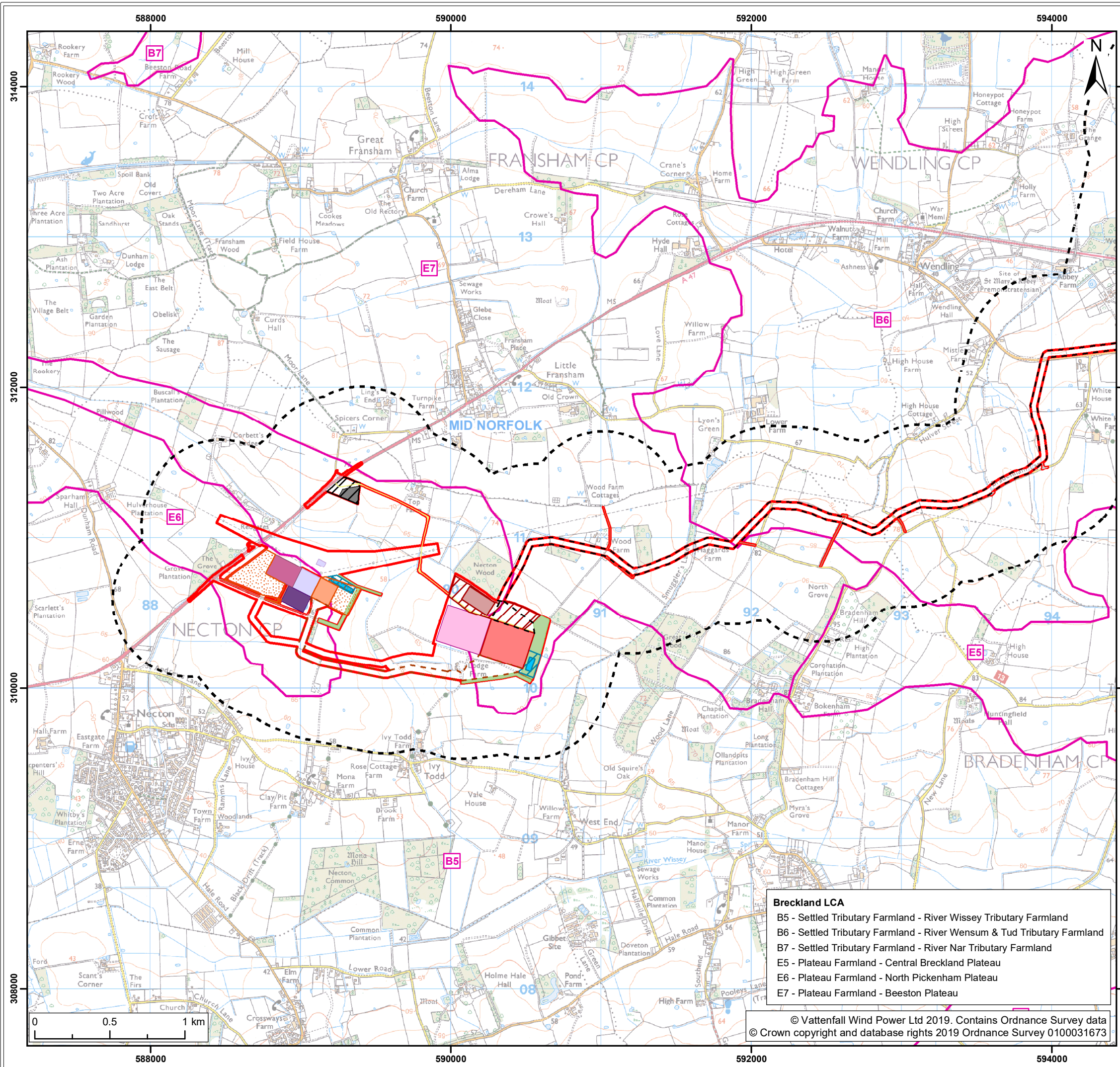
Title: Scenario 1
 Landscape Designations & Landscape Character Areas (map 8 of 9)

Figure: 29.2	Drawing No: PB5640-006-029-002				
Revision:	Date:	Drawn:	Checked:	Size:	Scale:
01	12/02/2019	LA	JP	A3	1:25,000
02	21/02/2019	LA	JP	A3	1:25,000

Co-ordinate system: British National Grid EPSG: 27700

- Breckland LCA**
- A4 - River Valleys - River Wensum & Blackwater
 - A5 - River Valleys - Upper Tud
 - B6 - Settled Tributary Farmland - River Wensum & Tud Tributary Farmland
 - E5 - Plateau Farmland - Central Breckland Plateau
 - E7 - Plateau Farmland - Beeston Plateau
 - E8 - Plateau Farmland - Dereham Plateau
 - U - Urban





- Legend:**
- Norfolk Boreas onshore red line boundary
 - Onshore cable route
 - Onshore 400kV cable route
 - Mobilisation zone
 - Indicative mobilisation area compound
 - Onshore project substation
 - Onshore project substation temporary construction compound zone
 - Indicative onshore project substation temporary construction compound
 - Norfolk Vanguard onshore project substation
 - Norfolk Vanguard National Grid substation extension
 - National Grid substation extension
 - National Grid temporary works
 - Mitigation areas
 - Attenuation pond zone
 - Indicative attenuation pond
 - Indicative mitigation planting
 - Access
 - Permanent access
 - Construction access
 - Operation access
 - Existing substation locations
 - Dudgeon substation
 - Necton National Grid substation
 - Study area 500m
 - Local authority boundary
 - National character area ³
 - Breckland landscape character area ⁴
- ¹ Historic England, 2019
² Broadland Development Management Plan, 2015/ North Norfolk Local Development Framework, 2008/ Breckland Local Development Plan, 2012
³ Natural England, 2019
⁴ North Norfolk Landscape Character Assessment, 2018/ Broadland District Council LDF Landscape Character Assessment Supplementary Planning Document (SPD), 2013/ Breckland District Landscape Character Assessment, 2007

Project: Norfolk Boreas Report: Environmental Statement

Title: Scenario 1
Landscape Designations & Landscape Character Areas (map 9 of 9)

Figure: 29.2	Drawing No: PB5640-006-029-002				
Revision:	Date:	Drawn:	Checked:	Size:	Scale:
01	12/02/2019	LA	JP	A3	1:25,000
02	21/02/2019	LA	JP	A3	1:25,000

Co-ordinate system: British National Grid EPSG: 27700

- Breckland LCA**
- B5 - Settled Tributary Farmland - River Wissey Tributary Farmland
 - B6 - Settled Tributary Farmland - River Wensum & Tud Tributary Farmland
 - B7 - Settled Tributary Farmland - River Nar Tributary Farmland
 - E5 - Plateau Farmland - Central Breckland Plateau
 - E6 - Plateau Farmland - North Pickenham Plateau
 - E7 - Plateau Farmland - Beeston Plateau

