

- Legend:
- Norfolk Boreas site
 - Offshore cable corridor
 - Project interconnector search area
 - 2016 geotechnical sample points¹
 - 2017 geotechnical sample points¹
 - Brown Bank formation extents²
 - Possible Twente Formation extents³
- Features of archaeological potential²**
- Devensian, Acoustic Blanking
 - Devensian, Erosion Surface
 - Holocene (Pre-Transgression), Channel
 - Holocene (Pre-Transgression), High Amplitude Reflector
 - Ipswichian or Devensian, Infilled Depression
 - Holocene (Pre-Transgression), Simple Cut and Fill

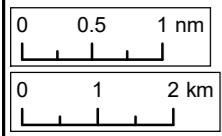
¹ Fugro, 2016/2017.
² Wessex Archaeology, 2018.
³ BGS, 1984.

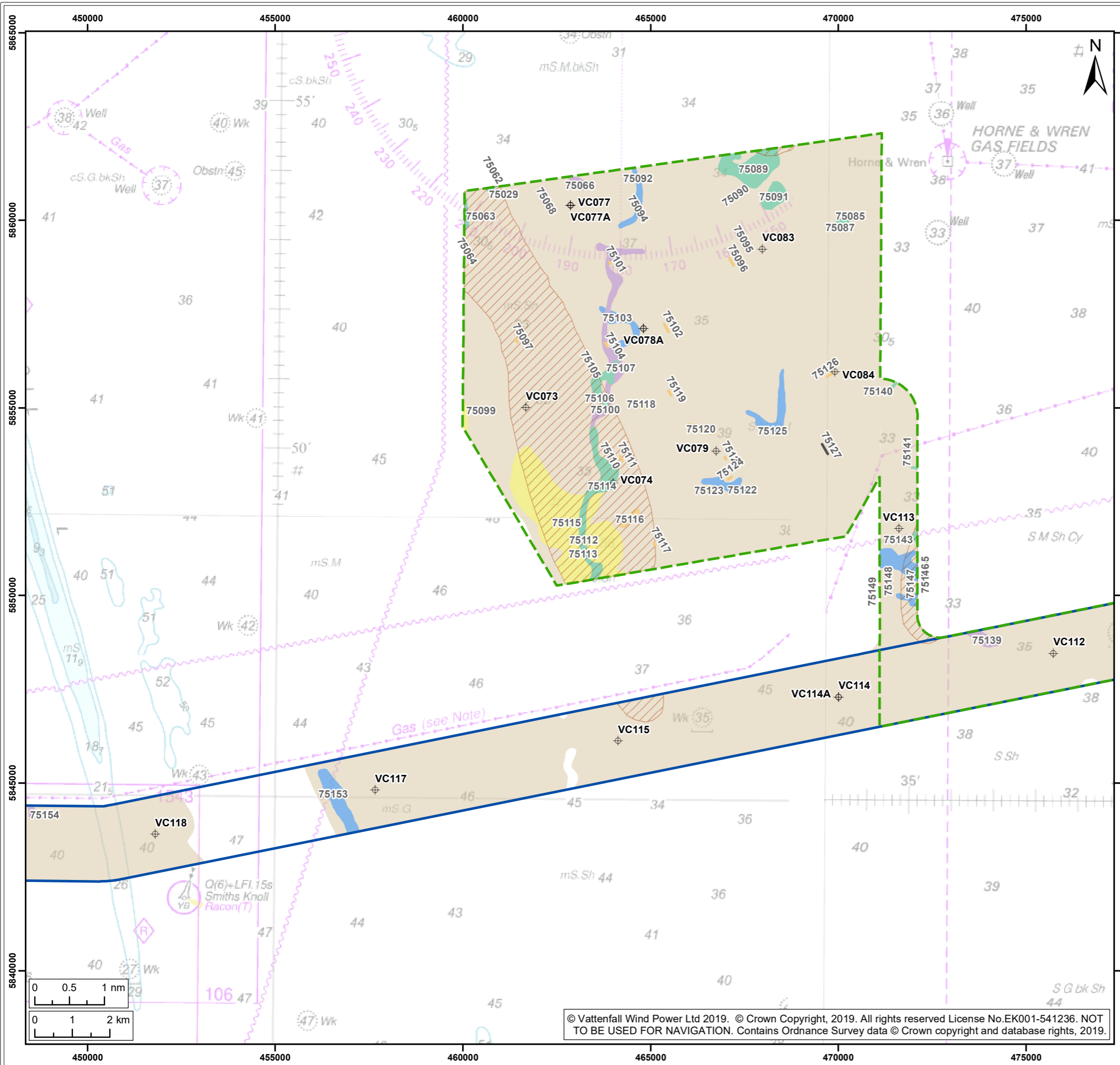
Project: Norfolk Boreas	Report: Environmental Statement
----------------------------	------------------------------------

Title:
 Palaeogeographic features of archaeological potential in the Offshore cable corridor and Project interconnector search area
 (Map 1 of 4)

Figure: 17.3	Drawing No: PB5640-006-0017-003				
Revision:	Date:	Drawn:	Checked:	Size:	Scale:
03	07/05/2019	JT	DT	A3	1:100,000
02	14/02/2019	JT	DT	A3	1:100,000

Co-ordinate system: ETRS 1989 UTM Zone 31N EPSG: 25831





- Legend:**
- Offshore cable corridor
 - Project interconnector search area
 - + 2016 geotechnical sample points¹
 - Brown Bank formation extents²
 - Possible Twente Formation extents³
- Features of archaeological potential²**
- Devesian, Acoustic Blanking
 - Devesian, Erosion Surface
 - Holocene (Pre-Transgression), Channel
 - Holocene (Pre-Transgression), High Amplitude Reflector
 - Holocene (Pre-Transgression), Simple Cut and Fill
 - Holocene (Pre-Transgression), Simple Cut and Fill
 - Ipswichian or Devesian, Coarse Sediment Deposit

¹ Fugro, 2016/2017.
² Wessex Archaeology, 2018.
³ BGS, 1984.

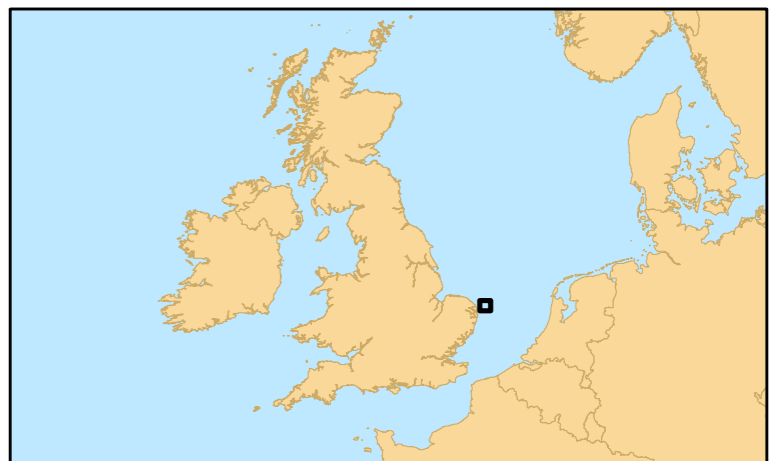
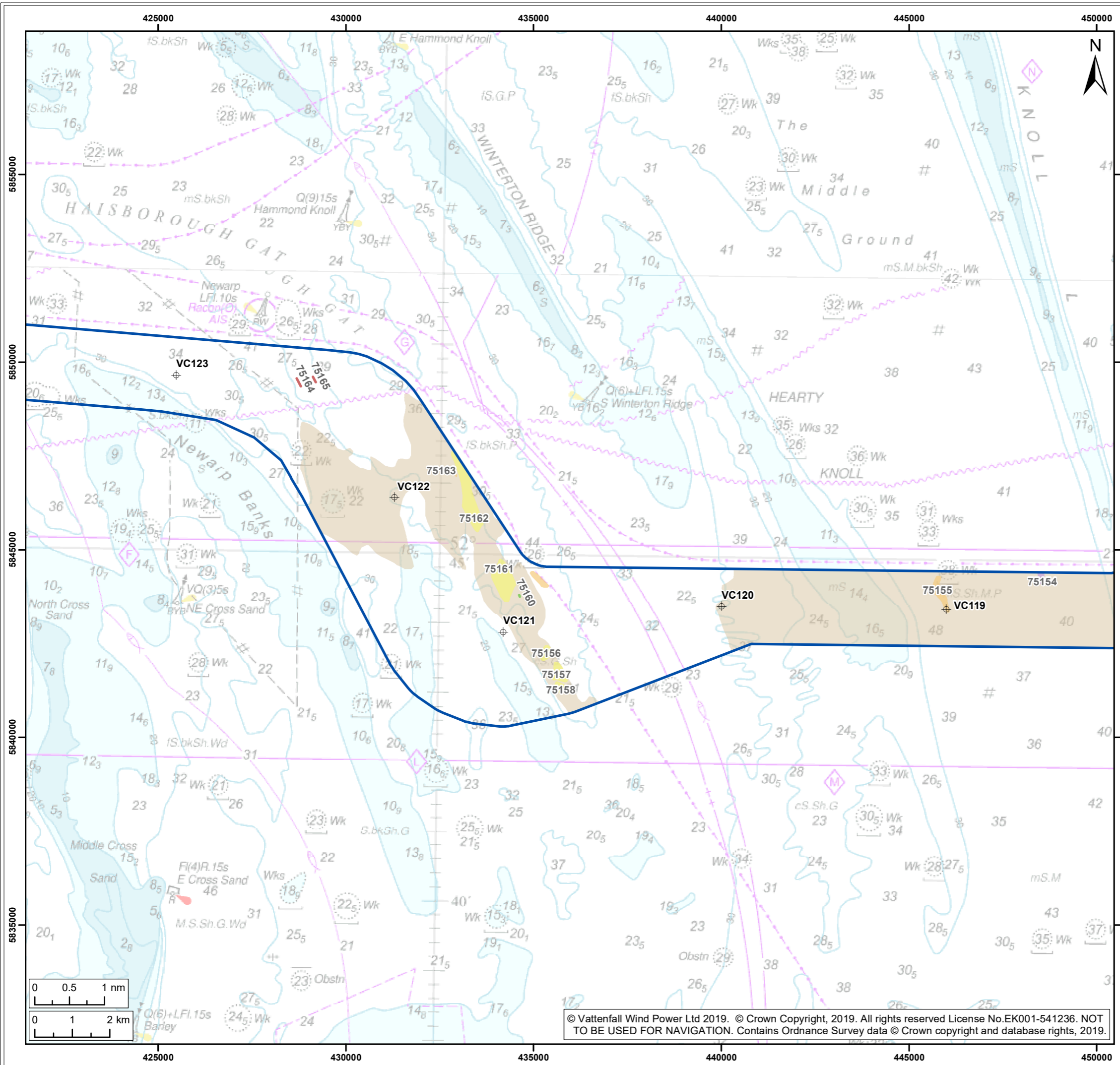
Project:	Report:
Norfolk Boreas	Environmental Statement

Title:
 Palaeogeographic features of archaeological potential in the Offshore cable corridor and Project interconnector search area
 (Map 2 of 4)

Figure: 17.3	Drawing No: PB5640-006-0017-003				
Revision:	Date:	Drawn:	Checked:	Size:	Scale:
03	07/05/2019	JT	DT	A3	1:100,000
02	14/02/2019	JT	DT	A3	1:100,000

Co-ordinate system: ETRS 1989 UTM Zone 31N EPSG: 25831





- Legend:
- Offshore cable corridor
 - 2016 geotechnical sample points¹
 - Brown Bank formation extents²
 - Features of archaeological potential²**
 - Devensian, Acoustic Blanking
 - Devensian, Erosion Surface
 - Holocene (Pre-Transgression), Simple Cut and Fill
 - Devensian, High Amplitude Reflector
 - Post-Ipswichian, Simple Cut and Fill

¹ Fugro, 2016/2017.
² Wessex Archaeology, 2018.
³ BGS, 1984.

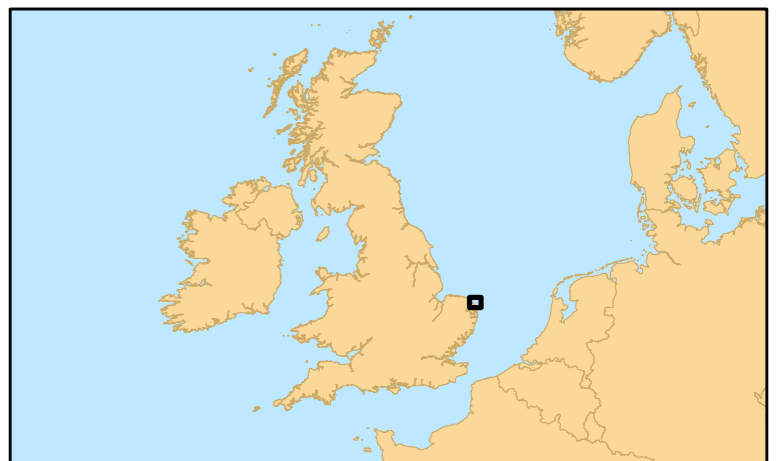
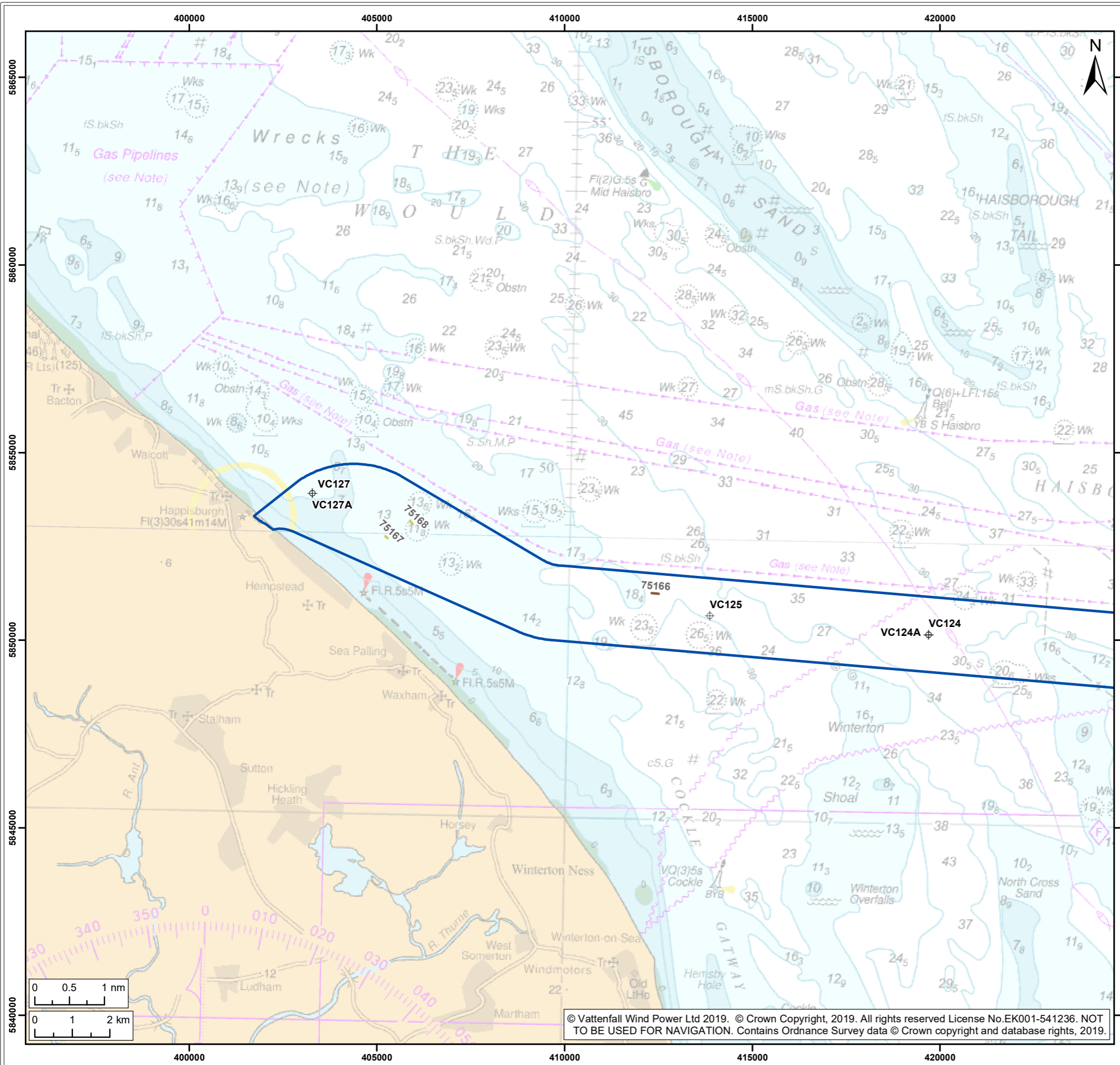
Project: Norfolk Boreas	Report: Environmental Statement
----------------------------	------------------------------------

Title:
 Palaeogeographic features of archaeological potential in the Offshore cable corridor and Project interconnector search area
 (Map 3 of 4)

Figure: 17.3		Drawing No: PB5640-006-0017-003			
Revision:	Date:	Drawn:	Checked:	Size:	Scale:
03	07/05/2019	JT	DT	A3	1:100,000
02	14/02/2019	JT	DT	A3	1:100,000

Co-ordinate system: ETRS 1989 UTM Zone 31N EPSG: 25831





- Legend:
- Offshore cable corridor
 - 2016 geotechnical sample points¹
 - Features of archaeological potential²**
 - Unknown, Complex Cut and Fill
 - Unknown, Simple Cut and Fill

¹ Fugro, 2016/2017.
² Wessex Archaeology, 2018.
³ BGS, 1984.

Project:	Report:
Norfolk Boreas	Environmental Statement

Title:
 Palaeogeographic features of archaeological potential in the Offshore cable corridor and Project interconnector search area
 (Map 4 of 4)

Figure: 17.3		Drawing No: PB5640-006-0017-003			
Revision:	Date:	Drawn:	Checked:	Size:	Scale:
03	07/05/2019	JT	DT	A3	1:100,000
02	14/02/2019	JT	DT	A3	1:100,000

Co-ordinate system: ETRS 1989 UTM Zone 31N EPSG: 25831

