

# Norfolk Boreas Offshore Wind Farm

# Consultation Report

## Appendix 12.4 October 2016 newsletter

Applicant: Norfolk Boreas Limited  
Document Reference: 5.1.12.4  
Pursuant to APFP Regulation: 5(2)(q)

Date: June 2019  
Revision: Version 1  
Author: Copper Consultancy

*Photo: Ormonde Offshore Wind Farm*

**This page is intentionally blank.**

# NORFOLK VANGUARD OFFSHORE WIND FARM



Community workshop


## Register your interest and keep up to date.

If you want to keep up to date with the project, whether or not you can attend a drop-in, you can register your interest in the project or contact us using one of these means:

 [info@norfolkvanguard.co.uk](mailto:info@norfolkvanguard.co.uk)

 01603 567995

 @VattenfallUK using the #NorfolkVanguard

 Norfolk Vanguard,  
The Union Building,  
51-59 Rose Lane,  
Norwich, Norfolk. NR1 1BY.

 [norfolkvanguard.vattenfall.co.uk/contactus](http://norfolkvanguard.vattenfall.co.uk/contactus)



## Dates for your diary

We look forward to meeting you at our drop-in exhibitions

Date	Tuesday 18 October	Wednesday 19 October	Thursday 20 October	Friday 21 October	Saturday 22 October	Friday 28 October	Saturday 29 October
Location	Aylsham	Happisburgh	Dereham	Necton	North Walsham	Great Yarmouth	Norwich
Address	Town Hall, Market Place, Aylsham, Norwich NR11 6EL	Wenn Evans Community Centre, Blacksmiths Lane, Happisburgh, NR12 0QY	Dereham Memorial Hall, 62A Norwich St, Dereham NR19 1AD	Necton Village Hall, Tuns Road, Swaffham, Norfolk, PE37 8EH	North Walsham Community Centre, New Road, North Walsham NR28 9DE	Great Yarmouth Borough Council Town Hall, Great Yarmouth, Norfolk NR30 2QF	Norwich City Hall, St Peters St, Norwich NR2 1NH
Exhibition Start Time	2pm	2pm	2pm	2pm	11am	2pm	11am
Close	6.30pm	6.30pm	6.30pm	6.30pm	4pm	6.30pm	4pm

## Can't make it?

Whilst we would encourage you to attend an event to talk directly to the team, information will also be available online for your consideration and comments.

[norfolkvanguard.vattenfall.co.uk](http://norfolkvanguard.vattenfall.co.uk)

## WELCOME TO OUR NEWSLETTER

### About Norfolk Vanguard

We are developing an offshore wind project, called Norfolk Vanguard, which could power more than 1.3million homes/year<sup>1</sup>. The 1.8 gigawatt (GW) development area would be located more than 47km from the Norfolk Coast. In fact, from the shore you won't be able to see it. The map also shows Norfolk Boreas, a second project which will be developed later.

### About Vattenfall

- 100% owned by the Swedish state.
- Operations in Sweden, Denmark, Finland, Germany, the Netherlands, Poland, and the United Kingdom.
- More than 28,000 employees.
- Ten UK offices with 214 staff.
- Since 2008, we have invested £3bn in the UK.
- Vattenfall aims to be carbon neutral by 2050.

### The planning process

The scale of Norfolk Vanguard means it is classed as a Nationally Significant Infrastructure Project (NSIP) under the Planning Act 2008. There is a clear, robust process that we follow, which gives you many opportunities to get involved and influence the project. See the timeline on pages 2 and 3 for development milestones.

### In this newsletter

- About Norfolk Vanguard
- About Vattenfall
- Getting involved
- Developing the project: offshore & onshore works
- Dates for your diary

### Getting involved

This is a major investment in Norfolk, one with long term possibilities. We will be holding a series of drop-in exhibitions to give you the chance to highlight the issues and opportunities that are important to maximise the benefits this project brings and minimise the impacts on you.

#### At these sessions, you can:

- meet our project team
- learn about our current plans
- understand the process
- share your views on the key issues
- help to shape the proposal.

See page 4 for dates and venues of the drop-ins.

Norfolk Vanguard and Norfolk Boreas Offshore Wind Farms are named after two ships Admiral Lord Nelson commanded in the 1700's.



<sup>1</sup>Number of homes equivalent: This is calculated using the most recent statistics from the Department for Business, Energy and Industrial Strategy showing that annual UK average domestic household consumption is 4,115kWh: <http://www.renewableuk.com/page/UKWEDEexplained>

## Developing the project - scoping and surveys

Developing any major energy scheme can be a complex engineering project, often in an environment with many natural, social and economic assets which need to be considered.

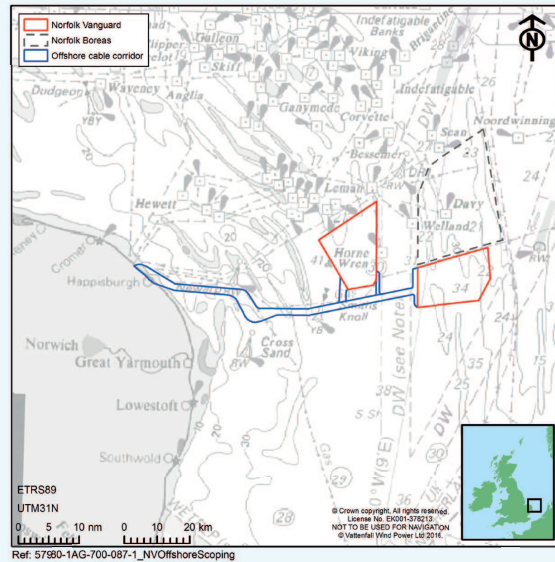
There is a significant amount of research, discussion and preparation that needs to take place.

The first step is a major scoping and survey effort, informed by discussions with you and key stakeholders. We need your input now as we start this work to understand the issues that are important to you.

In addition to the offshore aspects of the scheme, we need to connect the project to the National Grid, and understanding how we can best do this will be an important part of our conversations with you.

## Offshore works

Offshore, our survey work looks at the marine environment to understand the technical and environmental issues that we will need to factor into our design of the project. Our aim is to understand the optimal location for the turbines and other infrastructure.

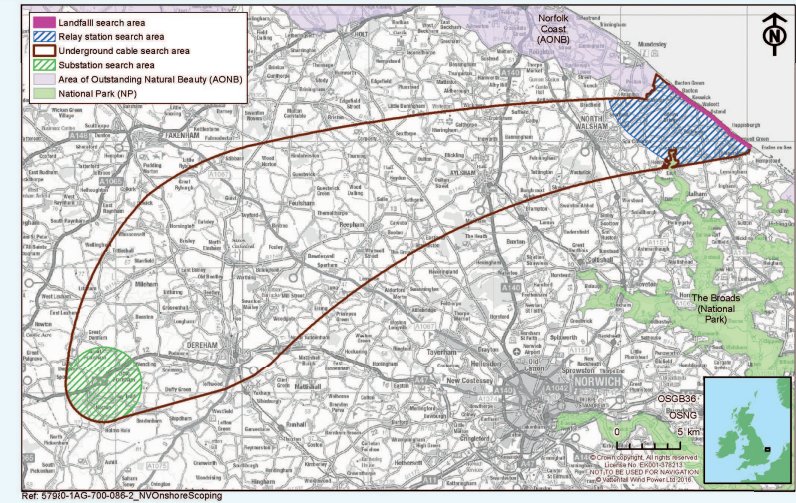


## Onshore works

Today, we have a wide search area (see map below) where our landfall, cable relay station (if required), substation and underground cables connecting the power from the offshore wind farm to the National Grid could be located. To start detailed survey work early in 2017, we need to focus our efforts, based on your feedback and our research about

environmental, physical, technical, commercial and social features, constraints and opportunities. Now is the chance to influence our decisions and help us understand what we need to consider from your perspective.

We have committed to burying all onshore cables underground.



Spring 2015 –  
Summer 2016

Spring –  
Autumn 2016

NOW

Winter 2016 –  
Summer 2017

Summer –  
Autumn 2017

Autumn –  
Winter 2017

Winter 2017 –  
Spring 2018

Summer 2018

2018 - 2019

2019

Pre-scoping	Scoping	Environmental Impact Assessment			Consent Application	Evaluation	Decision		
Early work to see what kind of project is possible. We look to secure a seabed lease and agree an onshore connection point with National Grid.	Scoping is the process which determines the content and extent of assessments to be covered in the Environmental Impact Assessment (EIA). It helps clarify and promote dialogue with consultees and stakeholders – including you – on the design of the project and proposed methods for our surveys and assessments.		The EIA process involves gathering data and enables dialogue and understanding to progress.  It allows for appropriate management and mitigation measures to be identified to ensure the development is sustainable.  The design of the offshore wind farm and onshore works is guided by the EIA.		The results of survey and assessment work undertaken during the EIA are presented in a document called the Preliminary Environmental Information Report (PEIR).	Further refinement of the EIA and preparation of the Environmental Statement.	The project submits a Development Consent Order (DCO) application for consent together with a range of additional supporting documents including the Environmental Statement to the Planning Inspectorate for examination.	The Planning Inspectorate will consider the DCO application and supporting documents.  This includes opportunities for stakeholders to comment on the proposal.	The Planning Inspectorate will make a recommendation to the Secretary of State who will then make a decision on the consent of the project.

Norfolk Vanguard website launched.

To register interest, or communicate with the project team, use: <http://norfolkvanguard.vattenfall.co.uk/contactus>

An early opportunity for you to influence the project design and surveys in the scoping phase.

In January 2017 we'll share a summary of the feedback we received.

You will see how the information you and others provided has refined the scope of our environmental assessments.

These are further opportunities for dialogue to help shape our emerging project design.

Your chance to comment on the design submitted in our DCO application and the Environmental Statement.

We exchange information with many stakeholders, including statutory consultees regularly and repeatedly during the Development Consent Order (DCO) process. Their reviews and feedback help shape the project.

To learn more about planning and nationally significant infrastructure projects, see <https://infrastructure.planninginspectorate.gov.uk>