

Vattenfall Wind Power Ltd

Thanet Extension Offshore Wind Farm

Annex A to Appendix 2 to Deadline 3 Submission:
ZTV and Wireframe Visualisations - Calais Dover
Ferry Route

Relevant Examination Deadline: 3

Submitted by Vattenfall Wind Power Ltd

Date: March 2019

Revision A

Drafted By:	Op-En
Approved By:	Daniel Bates
Date of Approval:	March 2019
Revision:	A

Revision A	Original Document submitted to the Examining Authority
N/A	
N/A	
N/A	

Copyright © 2019 Vattenfall Wind Power Ltd
All pre-existing rights retained

THANET EXTENSION OFFSHORE WIND FARM

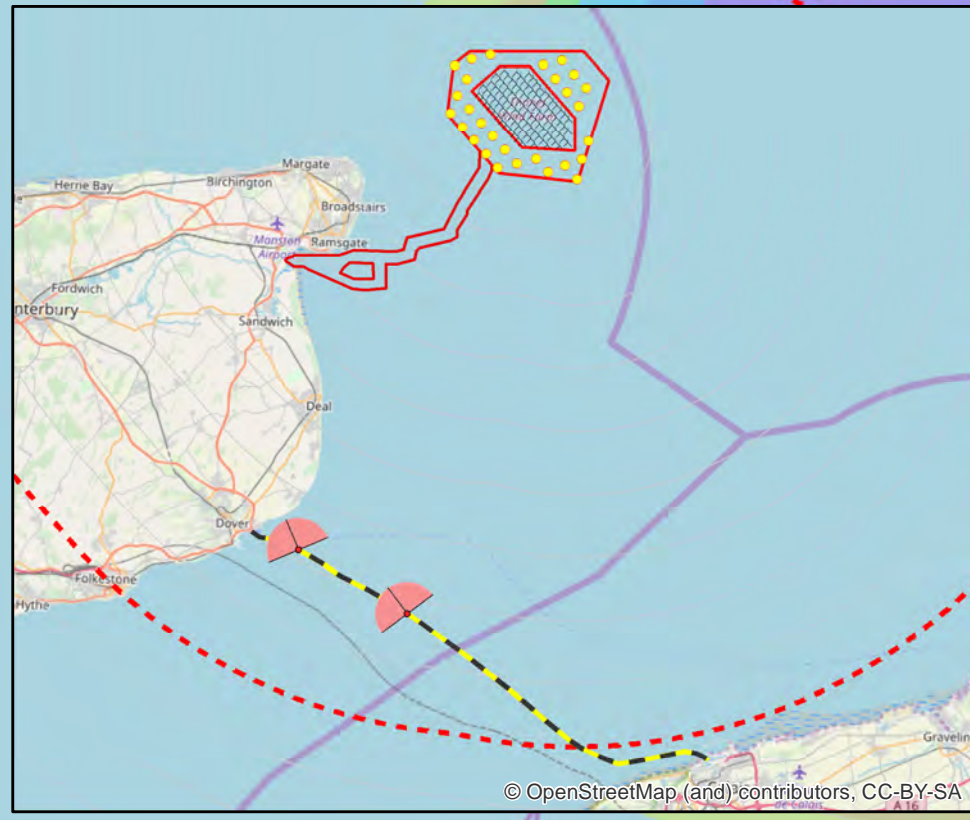
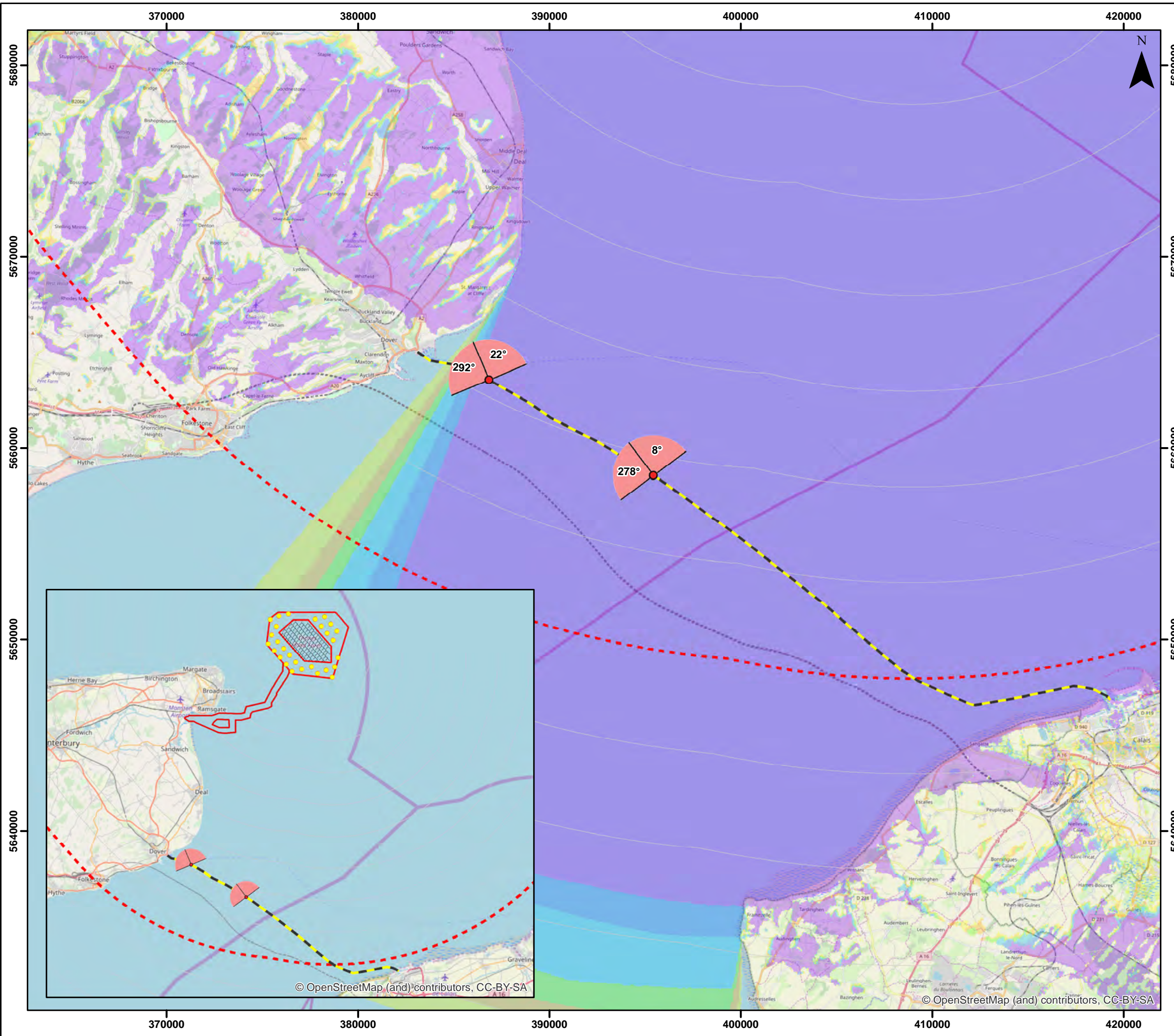
Annex A-1 Calais Dover Ferry Route ZTV

Legend

- Viewpoint Location (90° Field of View)
- Calais-Dover ferry route
- Indicative WTG location
- TOWF
- Offshore Red Line Boundary
- Offshore Cable Corridor
- 5km Radii
- 45km SLVIA Study Area

No. of Blade Tips Visible

- 1 - 5
- 6 - 10
- 11 - 14
- 15 - 19
- 20 - 25
- 26 - 28

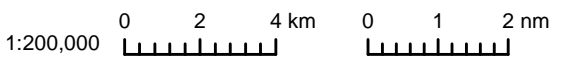


Datum: ETRS 1989
Projection: UTM31N

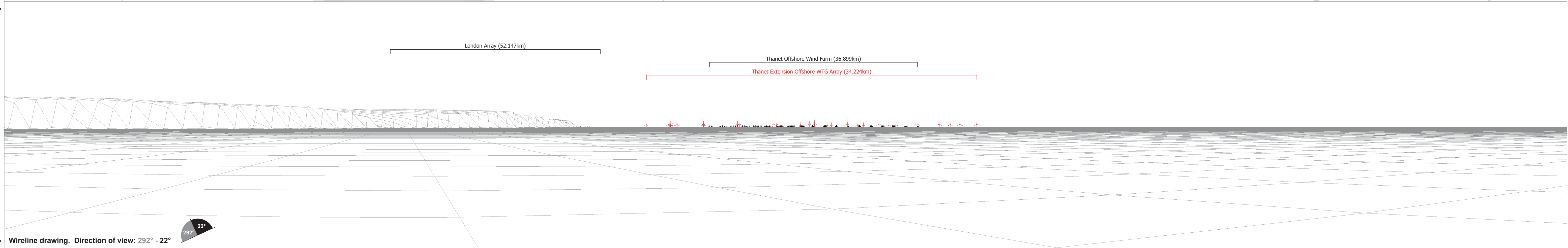
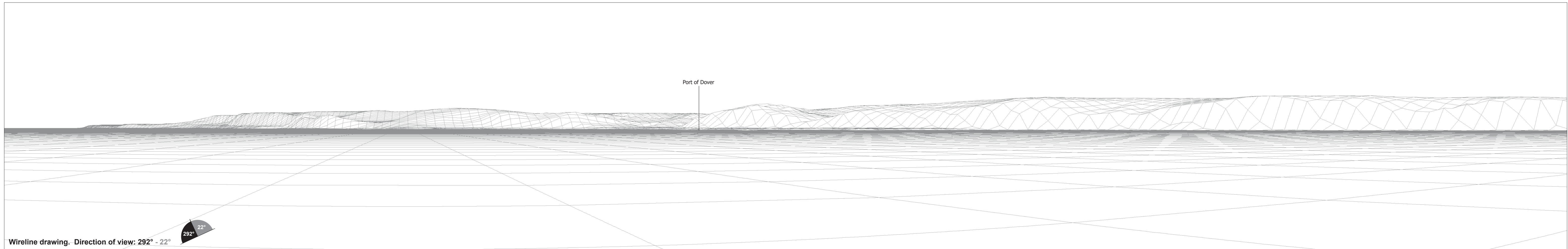


Notes
1 Insert note where relevant

© Vattenfall Wind Power Ltd 2018
© Crown Copyright, 2016. All rights reserved License
No. EK001-412013. NOT TO BE USED FOR NAVIGATION

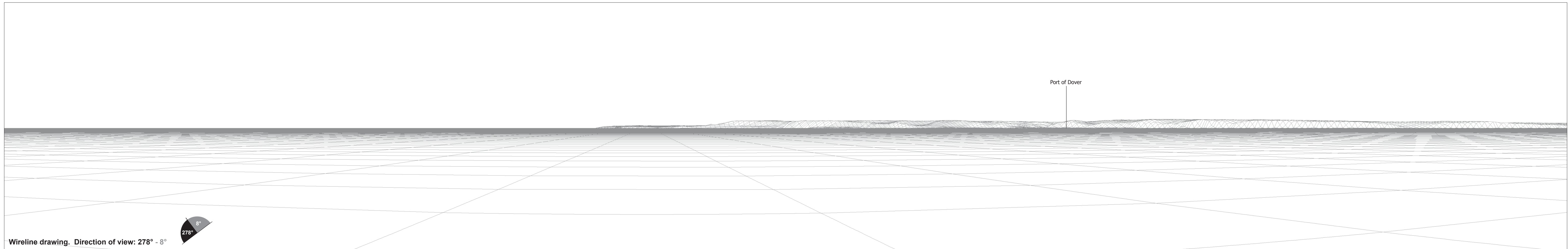


Drg No.	VF_SLVIA_Fig_A1_Ferry Route			Annex A-1
Rev	0.1	Date	01/03/2019	
By	JM	Layout	THET2018	

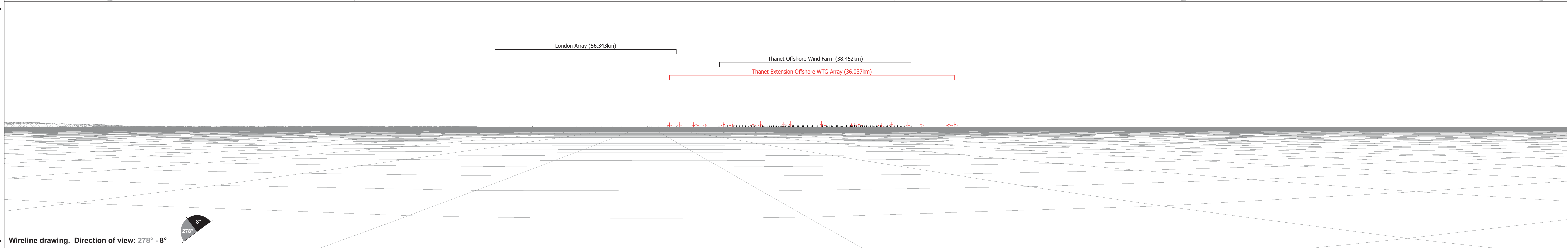
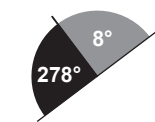


OS reference: 636893 E 140226 N
 Eye level: 11.5 m AOD
 Direction of view: 292° - 22°
 Nearest turbine: 34.224 km

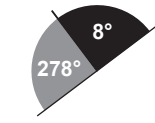
Horizontal field of view: 2 x 90° (cylindrical projection)
 Principal distance: 522 mm



Wireline drawing. Direction of view: 278° - 8°



Wireline drawing. Direction of view: 278° - 8°



OS reference: 645680 E 135877 N
 Eye level: 11.5 m AOD
 Direction of view: 278° - 8°
 Nearest turbine: 36.037 km

Horizontal field of view: 2 x 90° (cylindrical projection)
 Principal distance: 522 mm