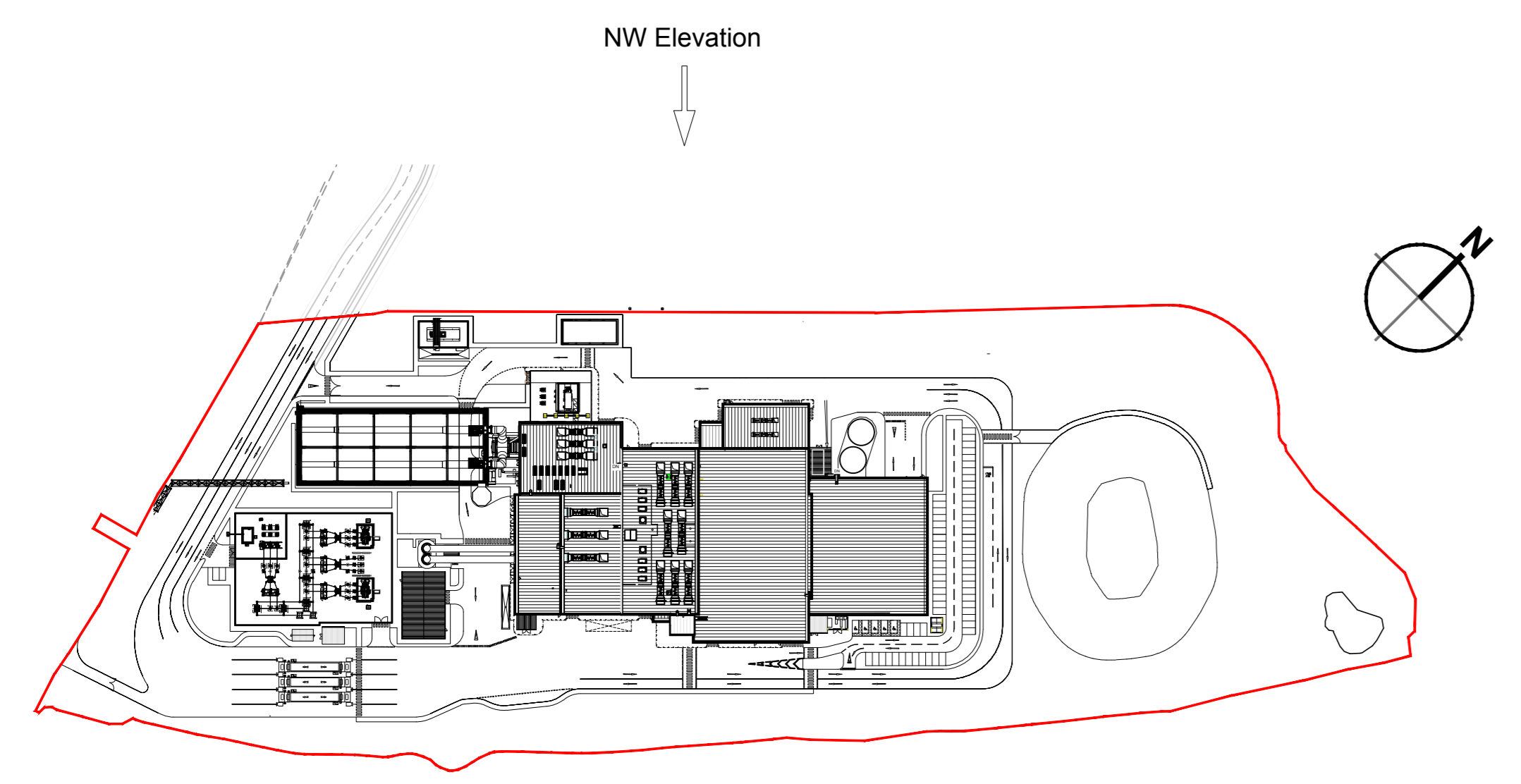


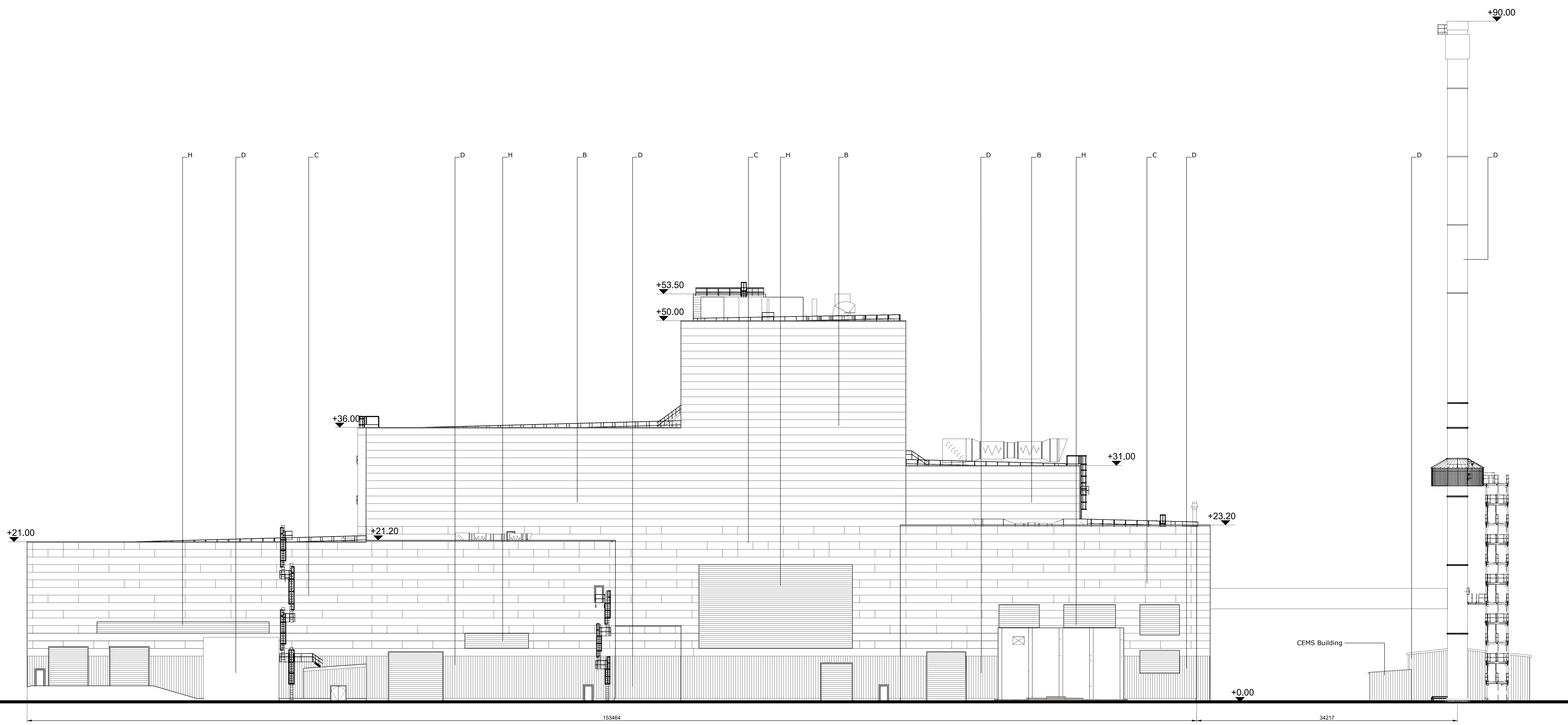
- notes :
- If this drawing has been received electronically it is the recipient's responsibility to print the document to the correct scale.
 - All dimensions are in millimetres unless stated otherwise. It is recommended that information is not scaled off this drawing.
 - This drawing should be read in conjunction with all other relevant drawings and specifications.
 - Internal dimensions to be confirmed at a later stage.

- Key:
- A. Horizontally laid 'Sinuacore' profile insulated built-up cladding with Colorcoat HPS2008 Ultra coating - Colour 'Terracotta' (matt finish) / RAL 040 40 40
 - B. Horizontally laid microb profile insulated cladding panel with Colorcoat HPS2008 Ultra coating - Colour 'Abatross' / RAL 240 80 05
 - C. Horizontally laid microb profile insulated cladding panel with Colorcoat HPS2008 Ultra coating, 100mm deep bands - Colours random mixture 'Terracotta' (matt finish) RAL 040 40 40 / Merin Grey RAL 180 40 05 / Anthracite (matt finish) RAL 7016 / Hamlet RAL 9002
 - D. Vertically laid Trapezoidal profile insulated cladding panel with Colorcoat HPS2008 Ultra coating - Colour 'Terracotta' (matt finish) / RAL 7016
 - E. Stack - Colour 'Light Grey' / RAL 7035
 - F. Horizontally laid microb profile cladding sheet with Colorcoat HPS2008 Ultra coating, 100mm deep bands - Colours random mixture 'Terracotta' (matt finish) RAL 040 40 40 / Merin Grey RAL 180 40 05 / Anthracite (matt finish) RAL 7016 / Hamlet RAL 9002
 - G. Horizontally laid microb profile insulated cladding panel with Colorcoat HPS2008 Ultra coating - Colour 'Terracotta' (matt finish) / RAL 180 40 05
 - H. Aluminium Louvers to be PPC colour Merin Grey RAL 180 40 05 / Anthracite (matt finish) RAL 7016

All Doors and Louvers - colour and dimensions to be confirmed.
 Polyester powder coated aluminium window frames - Colour 'Anthracite' (matt finish) / RAL 7016
 Metal external handrails and plant support - Galvanised finish.
 Palatin fencing and gates - Colour 'Anthracite' (matt finish) / RAL 7016



Key Plan
Scale 1:2000



North West Elevation
Scale 1:200

Drawing for **PLANNING** purposes only
 Content of drawing based on UMC drawing number 502520020002_UMG0291 and CNIM drawing AAK-04-0202_64G0008.
 Reproduced with permission

K	Louvre altered, CEMS platform and staircase added, site plan updated.	EC	TFH	28.08.18
J	Elevation updated to reflect recent client details.	PER	TFH	20.06.18
H	Escape stairs updated to be un-enclosed stair. Key Plan updated.	JT	CMG	28.02.17
G	Client logos updated. Walkway enclosure added. Transformer fence added. CEMS building added. Escape stair added. Key updated.	JT	CMG	13.02.17
F	Dimensions added	MT	CD	20.01.17
E	Elevation and Site Plan updated.	JH	CMG	10.01.17
D	Elevations Updated to suit latest UJ design. Keyplan updated to show revised site plan. Cladding design clarified.	AJA	RS	05.07.13
C	Elevations updated.	JAT	SG	09.10.12
B	E.ON logo added. UJU height confirmed.	KRY	PRP	15.02.10
A	UMA building extents confirmed. Keyplan updated. Stack colour confirmed.	AJA	PRP	18.01.10

RPS
 Shewood House
 Shewood Avenue
 Newark, Nottinghamshire
 NG24 1QD
 T +44 (0) 1636 605 700
 F +44 (0) 1636 610 696
 W www.rpsgroup.com
 E rpsnewark@rpsgroup.com

Client
 Wheelabrator Technologies
 Project Kemsley Sustainable Energy Plant
 Title Main Building Proposed North West Elevation

Drawing Status	Date Created	Drawing Scale
Preliminary	23.11.09	1:200
Project Leader	Drawn By	Initial Review
AWY	PRP	RS

Drawing Number 16315 / A0 / P / 0128 K
 Rev

