

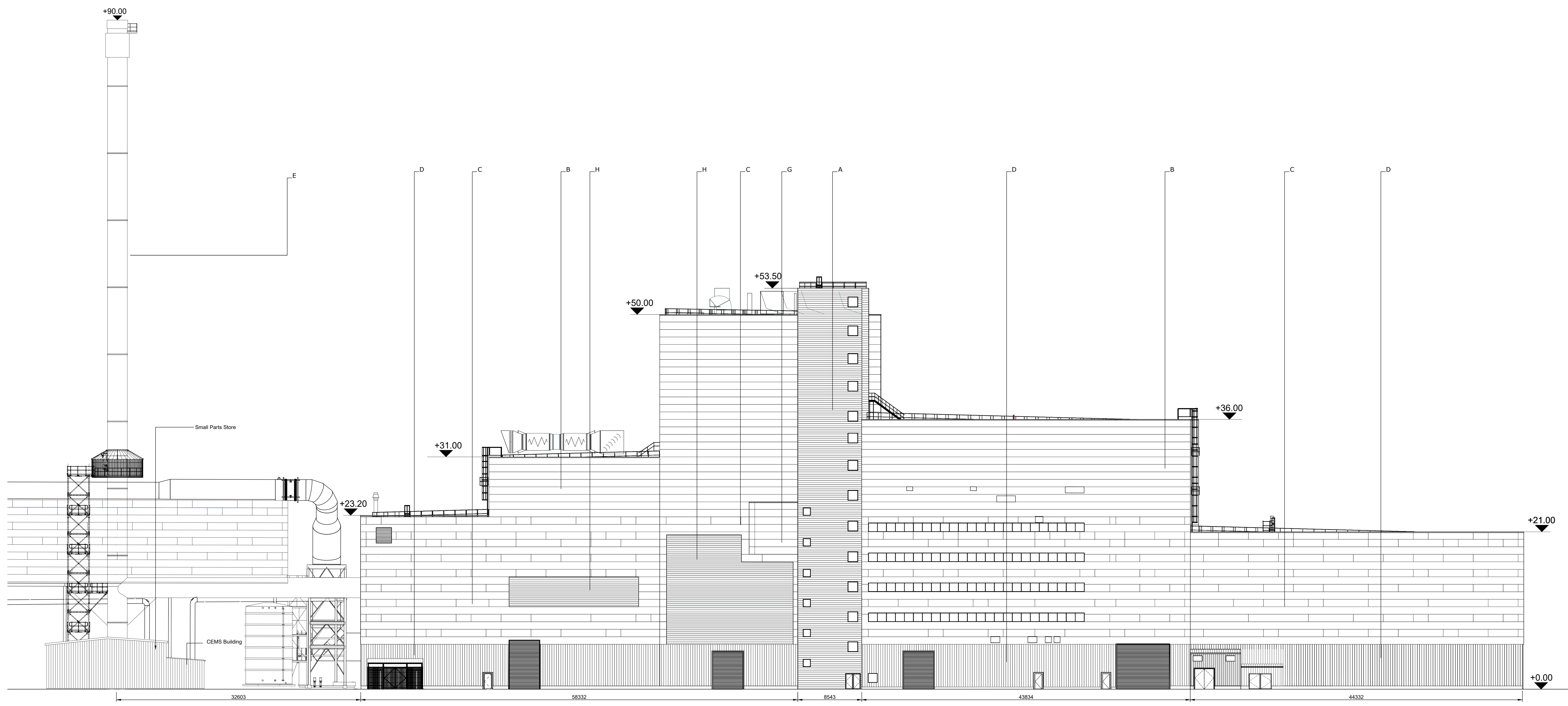
notes :

1. If this drawing has been received electronically it is the recipient's responsibility to print the document to the correct scale.
2. All dimensions are in millimetres unless stated otherwise. It is recommended that information is not scaled off this drawing.
3. This drawing should be read in conjunction with all other relevant drawings and specifications.
4. Internal dimensions to be confirmed at a later stage.

Key:

- A. Horizontally laid Sinusoidal profile insulated built-up cladding with Colorcoat HPS2000 Ultra coating - Colour 'Terracotta' (matt finish) / RAL 1040 40 40
- B. Horizontally laid microbe profile insulated cladding panel with Colorcoat HPS2000 Ultra coating - Colour 'Abatross' / RAL 247 80 05
- C. Horizontally laid microbe profile insulated cladding panel with Colorcoat HPS2000 Ultra coating, 1000mm deep bands - Colours random mixture 'Terracotta (matt finish) RAL 1040 40 40 / Merin Grey RAL 180 40 05 Anthracite (matt finish) RAL 7016 / Hanelt RAL 9002
- D. Vertically laid Trapezoidal profile insulated cladding panel with Colorcoat HPS2000 Ultra coating - Colour 'Anthracite' (matt finish) / RAL 7016
- E. Stack - Colour 'Light Grey' / RAL 7035
- F. Horizontally laid microbe profile cladding sheet with Colorcoat HPS2000 Ultra coating, 100mm deep bands - Colours random mixture 'Terracotta (matt finish) RAL 1040 40 40 / Merin Grey RAL 180 40 05 Anthracite (matt finish) RAL 7016 / Hanelt RAL 9002
- G. Horizontally laid microbe profile insulated cladding panel with Colorcoat HPS2000 Ultra coating - Colour 'Terracotta' (matt finish) / RAL 1040 40 05
- H. Aluminum Louvers to be PPC colour Merin Grey RAL 180 40 05 / Anthracite (matt finish) RAL 7016

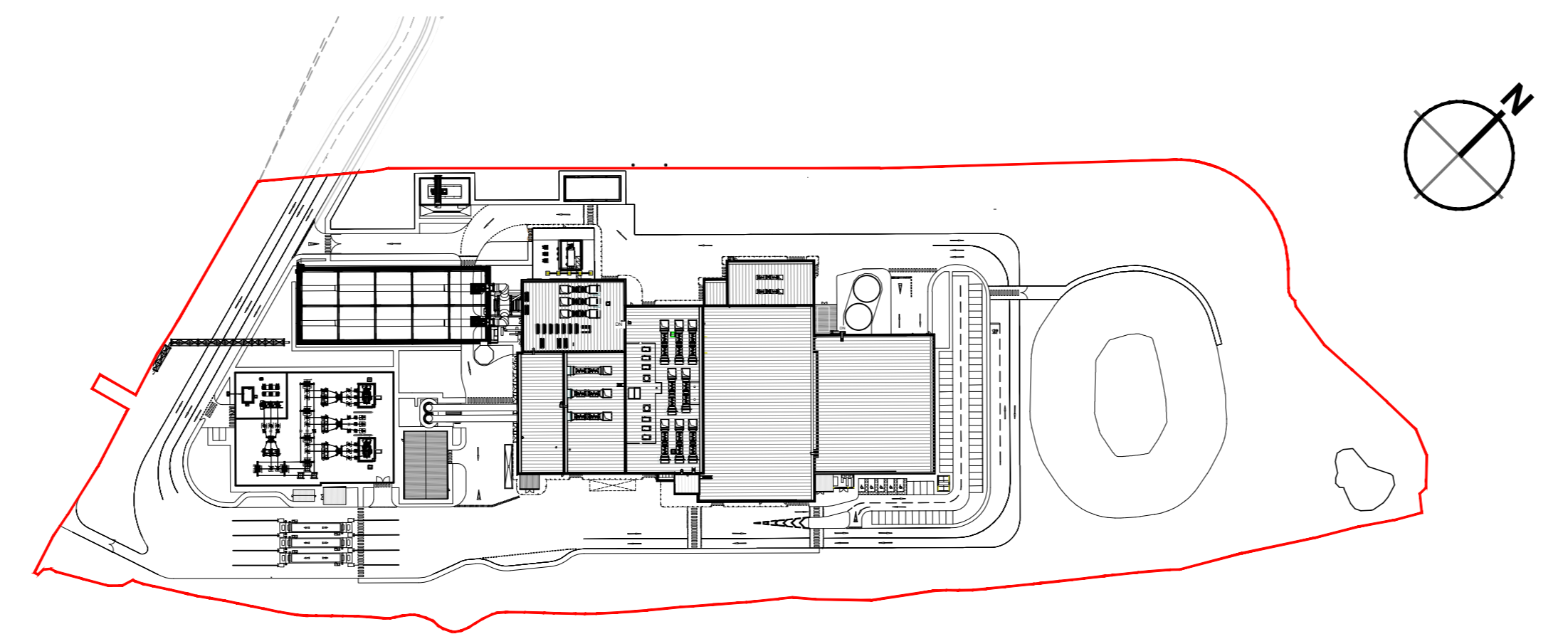
All Doors and Louvers - colour and dimensions to be confirmed.  
 Polyester powder coated aluminum window frames - Colour 'Anthracite' (matt finish) / RAL 7016  
 Metal external handrails and plant support - Galvanised finish.  
 Palatin fencing and gates - Colour 'Anthracite' (matt finish) / RAL 7016



South East Elevation  
Scale 1:200

Drawing for **PLANNING** purposes only  
 Content of drawing based on UMC drawing number 50252002002, UMG0290 and CNIM drawing AAK-04-0202\_04G0008. Reproduced with permission

|   |   |      |      |            |
|---|---|------|------|------------|
| K | Elevation and site plan updated   | BC   | TFH  | 17.09.2019 |
| J | Elevation updated to reflect recent client details  | PBR  | TFH  | 20.06.18   |
| H | Admin HVAC area updated. Escape stairs updated to be un-enclosed stair. Key Plan updated.   | JT   | CMDD | 28.02.17   |
| G | Client logos updated. Steam support rack updated as per CNM drawing. Walkway enclosure added. CEMS Building added. Escape stair added. Key updated. | JT   | CMDD | 13.02.17   |
| F | Dimensions added  | JH   | CMDD | 20.01.17   |
| E | Elevation and Site Plan updated.  | JH   | CMDD | 16.01.17   |
| D | Elevations Updated to suit latest UI design. Keyplan updated to show revised site plan. Cladding design clarified.                                  | A.JL | RS   | 05.07.13   |
| C | Elevations updated.   | JAT  | SG   | 09.10.12   |
| B | E.ON logo added. Building extents confirmed.  | KRY  | PRP  | 15.02.10   |
| A | Crane area material changes. Keyplan outline clarified.   | A.JL | PRP  | 16.01.10   |



Key Plan  
Scale 1:2000

SE Elevation



**RPS**  
 Shewood House  
 Shewood Avenue  
 Newark, Nottinghamshire  
 NG24 1QD

T +44 (0) 1636 605 700  
 F +44 (0) 1636 610 696  
 W www.rpsgroup.com  
 E rpsnewark@rpsgroup.com

Client: **Wheelabrator TECHNOLOGIES**

Project: **Kemsley Sustainable Energy Plant**

Title: **Main Building Proposed South East Elevation**

Drawing Status: Preliminary  
 Date Created: 23.11.09  
 Project Leader: AWY  
 Drawn By: PRP  
 Initial Review: RS

Drawing Number: **16315 / A0 / P / 0125 K**

FIGURE 4.8D