

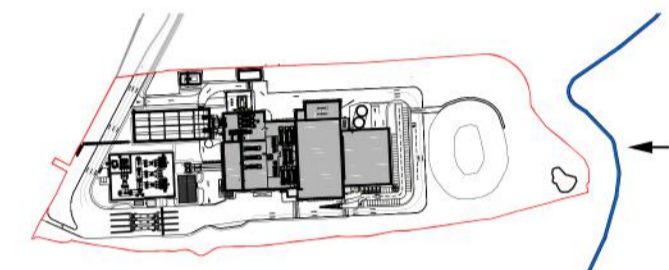
Key:

- A. Horizontally laid Sinusoidal profile insulated built-up cladding with Colorcoat HPS200® Ultra coating - Colour 'Terracotta' (matt finish) / RAL 040 40 40
- B. Horizontally laid microrib profile insulated cladding panel with Colorcoat HPS200® Ultra coating - Colour 'Albatross' / RAL 240 80 05
- C. Horizontally laid microrib profile insulated cladding panel with Colorcoat HPS200® Ultra coating, 1000mm deep bands - Colours random mixture 'Terracotta' (matt finish) RAL 040 40 40/ Merin Grey RAL 180 40 05/ Anthracite (matt finish) RAL 7016/ Hamlet RAL 9002
- D. Vertically laid Trapezoidal profile insulated cladding panel with Colorcoat HPS200® Ultra coating - Colour 'Anthracite' (matt finish) / RAL 7016
- E. Stack - Colour 'Light Grey' / RAL 7035
- F. Horizontally laid microrib profile cladding sheet with Colorcoat HPS200® Ultra coating, 1000mm deep bands - Colours random mixture 'Terracotta' (matt finish) RAL 040 40 40/ Merin Grey RAL 180 40 05/ Anthracite (matt finish) RAL 7016/ Hamlet RAL 9002
- G. Horizontally laid microrib profile insulated cladding panel with Colorcoat HPS200® Ultra coating - Colour 'Terracotta' (matt finish) / RAL 040 05
- H. Aluminium Louvres to be PPC colour Merin Grey RAL 180 40 05 / Anthracite (matt finish) RAL 7016

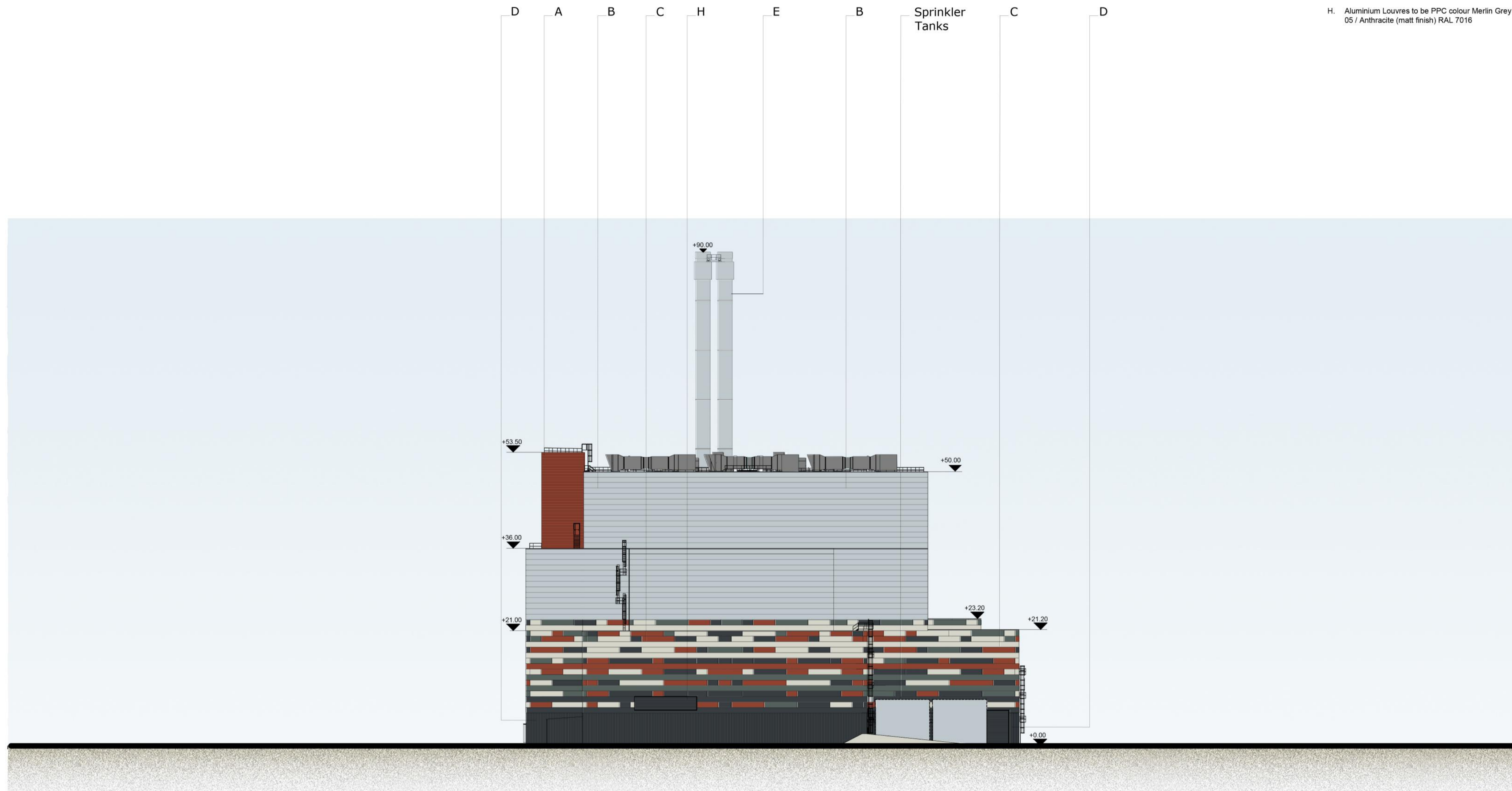
Polyester powder coated aluminium window frames - Colour 'Anthracite' (matt finish) / RAL 7016
 Metal external handrails and plant support - Galvanised finish.
 Paladin fencing and gates - Colour 'Anthracite' (matt finish) / RAL 7016

notes :

1. If this drawing has been received electronically it is the recipient's responsibility to print the document to the correct scale.
2. All dimensions are in millimetres unless stated otherwise. It is recommended that information is not scaled off this drawing.
3. This drawing should be read in conjunction with all other relevant drawings and specifications.
4. Information based on drawing reference: 15015 F0006.



Drawing for **PLANNING** purposes only



North East Elevation
 Scale 1:500

Rev	Amendments	By	CKD	Date
T	Site plan updated with removal of contour lines and building labels.	BC	TFH	04.09.18
S	Site revised and updated to show M & E equipment	PBR	TFH	04.07.18
R	Escape stair updated to be non enclosed stair.	JT	CMGD	21.02.17
P	Client logos updated. Steam export rack updated as per CNIM drawing. Key updated. Escape stair added.	JT	CMGD	13.02.17
N	Scale amended	MT	CD	19.01.17
M	Site Elevations and sections updated to suit 2016 NMA Site Plan Layout	DDP	CD	03.01.17
L	Updated to suit current site layout received from EPC contractor	MK	JAT	17.11.15
K	Updated as per client comments 26.10.15.	MK	JAT	28.10.15
J	Updated to suit current building layout received from EPC contractor	DEC	JAT	20.10.15
H	Logo's updated.	LMA	ST	02.08.13
G	Elevations updated. Logo's updated.	AJL	RS	10.07.13
F	Elevation information, title block and key updated.	JAT	SG	08.10.12
E	E.ON logo added. Building extents confirmed.	KRy	PRP	15.02.10
D	Stack colour reference amended. Crane area material changed to concrete. UMA extents confirmed.	AJL	PRP	18.01.10
C	Key updated. Brise Soleil added. Other minor amendments to drawing.	SMG	PRP	17.12.09
B	Elevation altered to show UEB.	AJL	PRP	23.11.09
A	Key added. Keyplan Updated. Building Elements Labelled.	AJL	PRP	19.11.09

rev	amendments	by	ckd	date
-----	------------	----	-----	------



Sherwood House
 Sherwood Avenue
 Newark, Nottinghamshire
 NG24 1QQ

T +44 (0) 1636 605 700
 F +44 (0) 1636 610 696
 W www.rpsgroup.com
 E rpsnewark@rpsgroup.com



Project **Kemsley Sustainable Energy Plant**

Title **North East Elevation**

Drawing Status	Date Created	Drawing Scale
Preliminary	11.11.09	1:250
Project Leader	Drawn By	Initial Review
AWY	SMG	RS

Drawing Number **16315 / A1 / P / 0111 T**

FIGURE 4.5D

