

Hornsea Project Three  
Offshore Wind Farm



## Hornsea Project Three Offshore Wind Farm

Appendix 34 to Deadline 7 submission – Figure showing BGS  
1992 Upper Cretaceous extents with Sheringham Shoal and  
Dudgeon

Date: 14<sup>th</sup> March 2019

Document Control			
<b>Document Properties</b>			
Organisation	Ørsted Hornsea Project Three		
Author	Amit Jadhav		
Checked by	Felicity Browner		
Approved by	Andrew Guyton		
Title	Appendix 34 to Deadline 7 submission – Figure showing BGS 1992 Upper Cretaceous extents with Sheringham Shoal and Dudgeon		
PINS Document Number	n/a		
<b>Version History</b>			
Date	Version	Status	Description / Changes
14/03/2019	A	Final	Submitted at Deadline 7 (14 <sup>th</sup> Mar 2019)

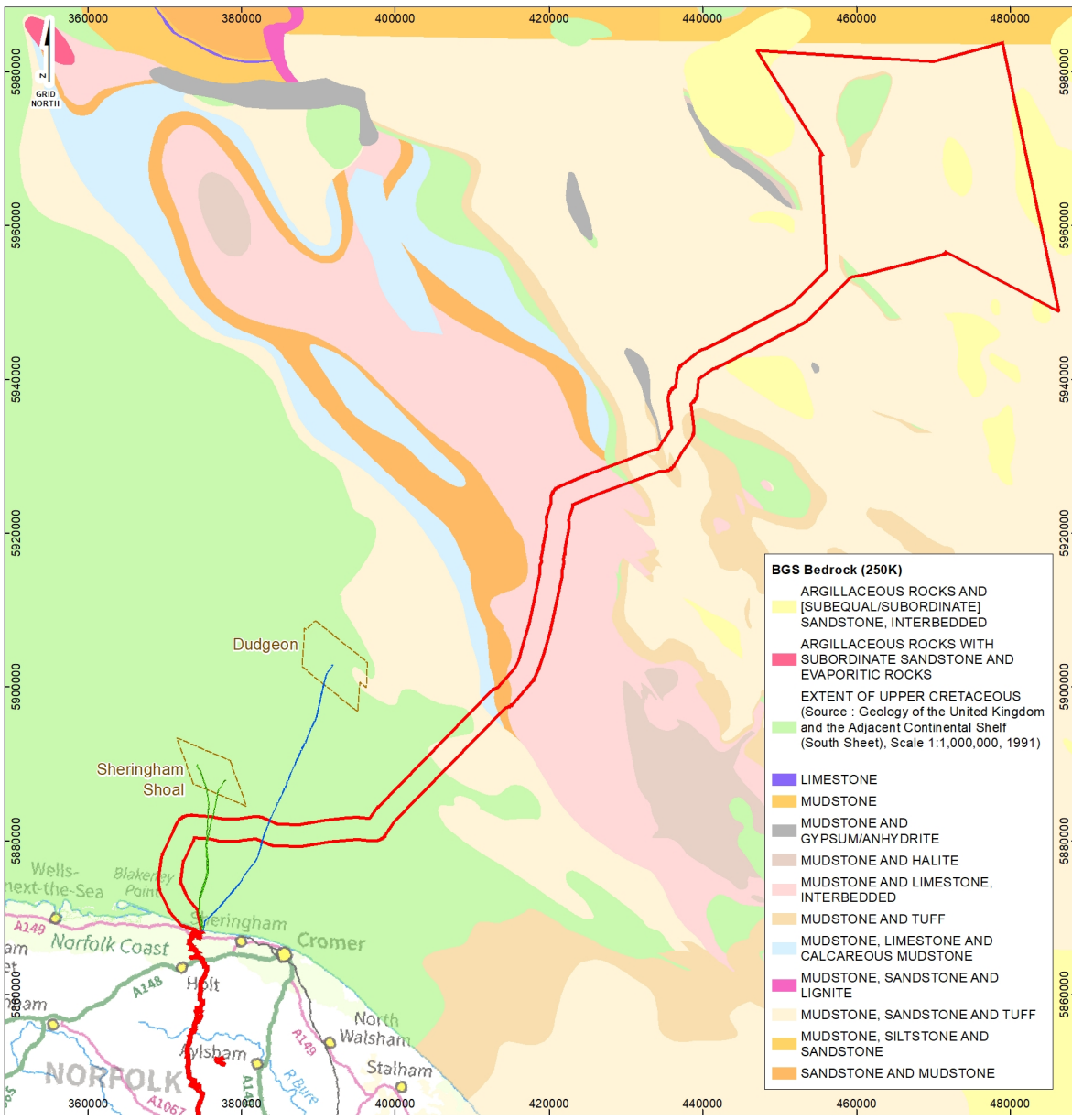
Ørsted

5 Howick Place,

London, SW1P 1WG

© Orsted Power (UK) Ltd, 2019. All rights reserved

Front cover picture: Kite surfer near a UK offshore wind farm © Ørsted Hornsea Project Three (UK) Ltd., 2019.

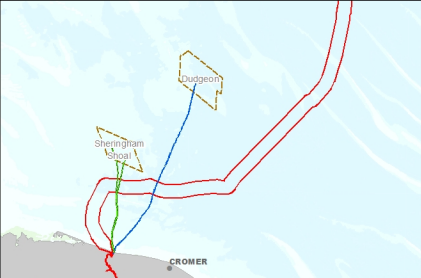


**Hornsea Three**

- Order Limits
- Other Offshore Windfarms**
- Other Offshore Windfarms (inset map)
- Dudgeon Export Cables
- Blue Transmission - Sheringham Shoal Export Cable
- Extent of Upper Cretaceous

Source : *Geology of the United Kingdom and the Adjacent Continental Shelf (South Sheet), Scale 1:1,000,000, 1991*

Source:  
 Agreement for Lease © TCE, Crown copyright 2019  
 Contains British Geological Survey materials © UKRI 2019  
 Crown copyright and database rights 2 019 Ordnance Survey 010 0031 673  
 Contains EMODnet data © 2019 | Cables data from KIS-ORCA



- BGS Bedrock (250K)**
- ARGILLACEOUS ROCKS AND [SUBEQUAL/SUBORDINATE] SANDSTONE, INTERBEDDED
  - ARGILLACEOUS ROCKS WITH SUBORDINATE SANDSTONE AND EVAPORITIC ROCKS
  - EXTENT OF UPPER CRETACEOUS (Source : *Geology of the United Kingdom and the Adjacent Continental Shelf (South Sheet), Scale 1:1,000,000, 1991*)
  - LIMESTONE
  - MUDSTONE
  - MUDSTONE AND GYPSUM/ANHYDRITE
  - MUDSTONE AND HALITE
  - MUDSTONE AND LIMESTONE, INTERBEDDED
  - MUDSTONE AND TUFF
  - MUDSTONE, LIMESTONE AND CALCAREOUS MUDSTONE
  - MUDSTONE, SANDSTONE AND LIGNITE
  - MUDSTONE, SANDSTONE AND TUFF
  - MUDSTONE, SILTSTONE AND SANDSTONE
  - SANDSTONE AND MUDSTONE

Reference System : ETRS89  
 Projection : UTM 31N  
 Scale@A4: 1:900,000  
 Vertical reference: LAT

0 10 20 30 Kilometres

0 5 10 15 Nautical Miles

REV	REMARK	DATE
00	Initial Issue	14/03/2019

## Hornsea Three

### Extent of Upper Cretaceous