

Hornsea Project Three  
Offshore Wind Farm



## Hornsea Project Three Offshore Wind Farm

Appendix 35 to Deadline I submission  
– Marine Navigation Figures and Tables

Date: 7<sup>th</sup> November 2018

  
Hornsea 3  
Offshore Wind Farm



Document Control			
<b>Document Properties</b>			
Organisation	Ørsted Hornsea Project Three		
Author	Karma Leyland		
Checked by	Dominika Chalder		
Approved by	Andrew Guyton		
Title	Appendix 35 to Deadline I submission – Marine Navigation Figures and Tables		
PINS Document Number	n/a		
<b>Version History</b>			
Date	Version	Status	Description / Changes
07/11/2018	A	Final	Submission at Deadline I (7 <sup>th</sup> Nov 2018)

Ørsted

5 Howick Place,

London, SW1P 1WG

© Ørsted Power (UK) Ltd, 2018. All rights reserved

Front cover picture: Kite surfer near a UK offshore wind farm © Ørsted Hornsea Project Three (UK) Ltd., 2018.

## Table of Contents

1. Figures and tables to support responses detailed in Written Questions 1.5.1 and 1.5.2 .....	1
Written Question 1.5.1: Collision Risk Modelling .....	1
Written Question 1.5.2: Adverse Weather Routeing .....	1

## List of Tables

Table 1.1 Other Offshore Wind Farm Collision Risk Change .....	1
--	---

## List of Figures

Figure 1.1 Overview of DFDS Seaways adverse weather routes, standard routes and vessel tracks (December 2017 –February 2018).....	2
---	---

## 1. Figures and tables to support responses detailed in Written Questions 1.5.1 and 1.5.2

### **Written Question 1.5.1: Collision Risk Modelling**

Table 1.1 presents the vessel to vessel collision return periods (the estimated number of years per major collision) for the pre wind farm and post wind farm scenarios for other (publically available) offshore wind projects.

Table 1.1 Other Offshore Wind Farm Collision Risk Change

Project	Vessel to Vessel Collision Return Period		
	Pre Wind Farm	Post Wind Farm	Change %
Hornsea Three	193	152	21.4
Hornsea Two (Consented)	44	31	41
Hornsea One (Consented)	75	60	25
Norfolk Vanguard	15	12	22
Beatrice	2,014	2,013	0.1
Inch Cape	797	695	15
Dogger Bank Creyke Beck A (Consented)	2,223	1,890	17.6
Dogger Bank Creyke Beck B (Consented)	1,401	835	68.1
Combined Creyke Beck A and B (Consented)	941	568	66
Dogger Bank Teesside A (Consented)	569	461	23.41
Dogger Bank Teesside B (Consented)	1112	624	78.31
Combined Teesside A and B (Consented)	312	242	29.07

### **Written Question 1.5.2: Adverse Weather Routeing**

Figure 1.1 presents an overview of the indicative DFDS adverse weather routes and indicative standard routes alongside actual vessel tracks that were recorded using the Cuxhaven – Immingham routes (recorded from AIS data). The actual tracks were primarily recorded from AIS during December 2017 – February 2018 and feature four commercial ferries – namely the *Anglia*

*Seaways, Hafnia Seaways, Jutlandia Seaways and Stena Foreteller* – these are shown in black within the figure. Actual adverse weather tracks for the Hafnia Seaways recorded were during April – October 2016 are shown in pink within the figure.

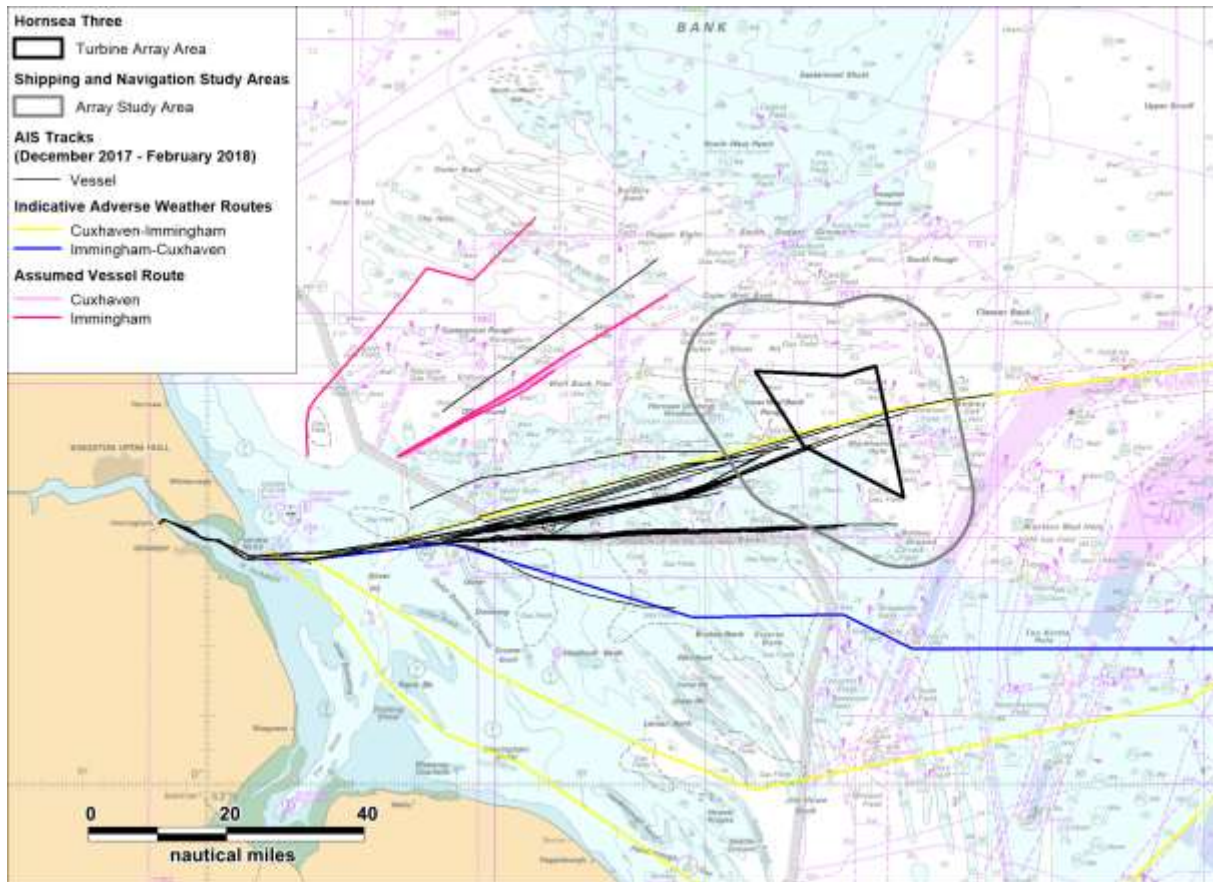


Figure 1.1 Overview of DFDS Seaways adverse weather routes, standard routes and vessel tracks (December 2017 –February 2018)