

Hornsea Project Three
Offshore Wind Farm



Hornsea Project Three Offshore Wind Farm

Consultation Report:
Annex 11 - Section 47 Phase 1.A Consultation Materials

PINS Document Reference: A5.1.11
Planning Act 2008, s37(7)

Date: May 2018


Hornsea 3
Offshore Wind Farm



Consultation Report

Annex 11 – Section 47 Phase 1.A Consultation Materials

Report Number: A5.1.11

Version: Final

Date: May 2018

This report is also downloadable from the Hornsea Project Three offshore wind farm website at:

www.hornseaproject3.co.uk

Ørsted

5 Howick Place,

London, SW1P 1WG

© Orsted Power (UK) Ltd, 2018. All rights reserved

Front cover picture: Kite surfer near a UK offshore wind farm © Orsted Hornsea Project Three (UK) Ltd., 2018.

Prepared by: Ørsted

Checked by: Katie Hales, Celestia Godbehere and Thomas Neall

Accepted by: Emily Woolfenden

Approved by: Sophie Banham

Table of Contents

Section Number	Content
1	Phase 1 Consultation Event Overview
2	Phase 1 Exhibition Banners
3	Phase 1 Consultation Plans
4	Phase 1 Publicity
5	Phase 1 Feedback Form

Hornsea Project Three
Offshore Wind Farm



Hornsea Project Three Offshore Wind Farm

Consultation Report: Annex 11
Section 1 – Phase 1 Consultation Event Overview

Date: May 2018



Table of Contents

1.	Introduction	3
2.	DONG Energy	4
3.	Hornsea Project Three Offshore Wind Farm	5
4.	Policy Background	6
5.	The Planning Process	7
6.	Project Description	8
6.1	Infrastructure Overview	8
7.	Offshore Works	10
8.	Onshore Works	11
9.	Site Selection Process	12
10.	Pre-application Consultation	13
10.1	Statement of Community Consultation	13
10.2	Environmental Information	14
10.3	Community Consultation Events	15
10.3.1	Phase One (Informal)	15
10.3.2	Phase Two (Formal)	15
11	Let Us Know Your Thoughts	16
12	Project Contact Information	17
<u>Appendix</u>		18
Appendix 1:	List of Phase 1 Events	18
Appendix 2:	List of Council Offices Where the SoCC is Displayed	19



1. Introduction

This Phase One Consultation Event Overview provides an introduction to the proposed Hornsea Project Three Offshore Wind Farm.

It provides initial information on the Project at this early stage, including the proposed infrastructure and site selection process. It also describes our plans for public engagement and your opportunities to find out more and have your say.

The first round of events for our Phase One (informal) Community Consultation will run from 31st October – 9th November 2016.

2. DONG Energy

DONG Energy is the global leader in the development, construction and operation of offshore wind farms, with over 25 years of experience. Headquartered in Denmark, the UK is DONG Energy's largest market, with national headquarters in London and further office locations throughout the UK.

DONG Energy is investing heavily in the UK with a total of £6 billion invested to date, and a further £6 billion expected by 2020. In the UK, we have eight operational offshore wind farms and a further four under construction. The UK is now our primary market for offshore wind power, but we also invest in the exploration of oil and gas, sell flexible solutions to our gas and electricity commercial and industrial customers and are investing in new technologies that convert household waste into energy.



The current installed capacity of DONG Energy's offshore wind farms in the UK has the potential to power almost **2 million** UK households each year.¹



DONG Energy is rapidly expanding in the UK. With fewer than ten employees in 2004, we have grown to over **700** today.



Our offshore wind farms in the UK are helping to offset UK CO₂ emissions. The emissions saved by the electricity currently generated from our offshore wind farms equates to taking **1.8 million** cars off UK streets for one whole year.²



¹ We have based this on a load factor of 42% and a household consumption of 4.1MWh per year.

² This figure assumes a load factor of 42%, and a CO₂ emissions factor of 430g CO₂ / kWh and an emissions saving per car of 1909 tons CO₂ / year.

3. Hornsea Project Three Offshore Wind Farm

DONG Energy is proposing to develop a new offshore wind farm in the North Sea, approximately 120 km off the North Norfolk coast.



If built out to full capacity (2.4 GW, which is 2,400 MW), Hornsea Project Three could be the world's largest offshore wind farm, providing green electricity for well over

2 million UK homes.



Hornsea Project Three Offshore Wind Farm will be located approximately 120 km off the North Norfolk coast, within an offshore area over

17 times the size of Norwich.

Background

In August 2015, DONG Energy acquired the rights to develop the remainder of the Hornsea Zone in purchasing SMart Wind Ltd, who were originally awarded the zone in The Crown Estate Round 3 bid process.

Hornsea Project One and Hornsea Project Two have both received planning consent and we are now exploring the potential to develop a third offshore wind farm to the east of these (Hornsea Project Three).

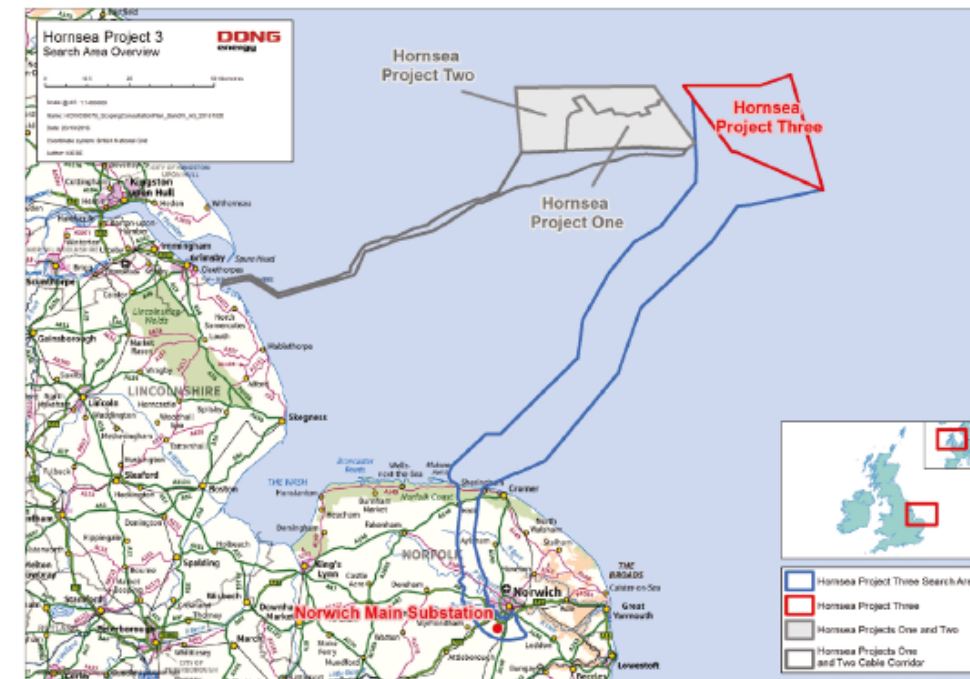


Figure 1: Map showing the Hornsea Project Three offshore array area in relation to Hornsea Project One and Hornsea Project Two.

4. Policy Background

The Climate Change Act 2008 legally committed the UK to reduce its greenhouse gas emissions by at least 80% by 2050, compared to the 1990 level³. Over the next couple of decades, much of the UK's existing electricity generation plant is set to close and the UK urgently needs to replace large volumes of its existing electricity infrastructure with low carbon generation.

Moving to a secure, low carbon energy system requires major investment in new technologies and changes the way energy is used by society. In 2011, the UK Government published a number of National Policy Statements (NPSs) for Energy, designed to help deliver new energy infrastructure, at the scale and speed required to meet the UK's current and future energy needs, whilst respecting the principles of sustainable development⁴. Development consent decisions on these Nationally Significant Infrastructure Projects (NSIPs) must also take into account the views of local communities.

As an island nation, with relatively shallow waters and high wind speeds, the UK has an abundant natural wind resource, and offshore wind power has the potential to contribute significantly towards this low carbon transition. The UK currently has more installed offshore wind capacity than anywhere in the world, with over 5 GW of operational capacity, enough to supply over three and a half million UK homes⁵.

As the market leader and with a strong pipeline of UK projects, DONG Energy has played a pivotal role in the growth of the UK offshore wind market, helping support the development of a sustainable UK supply chain and providing long-term high skilled jobs across the UK. We have been at the forefront of reducing the cost of offshore wind, bringing forward next generation turbines and standardising our methods.



³ Climate Change Act 2008. Available online: http://www.legislation.gov.uk/ukpga/2008/27/pdfs/ukpga_20080027_en.pdf

⁴ DECC (July 2011). National Policy Statement for Energy (EN-1). Available online: https://www.gov.uk/government/uploads/system/uploads/attachment_data/file/47854/1938-overarching-nps-for-energy-en1.pdf

⁵ RenewableUK (June 2016). <http://www.renewableuk.com/page/UKWEDHome>

5. The Planning Process

As the proposed generating capacity of Hornsea Project Three exceeds 100 megawatts (MW), the Project is classified as a NSIP, and must apply for a Development Consent Order (DCO) under the Planning Act 2008 (the Act). Consents for the wind farm, offshore and onshore cable route (including substations and final grid connection) will be included in the DCO.

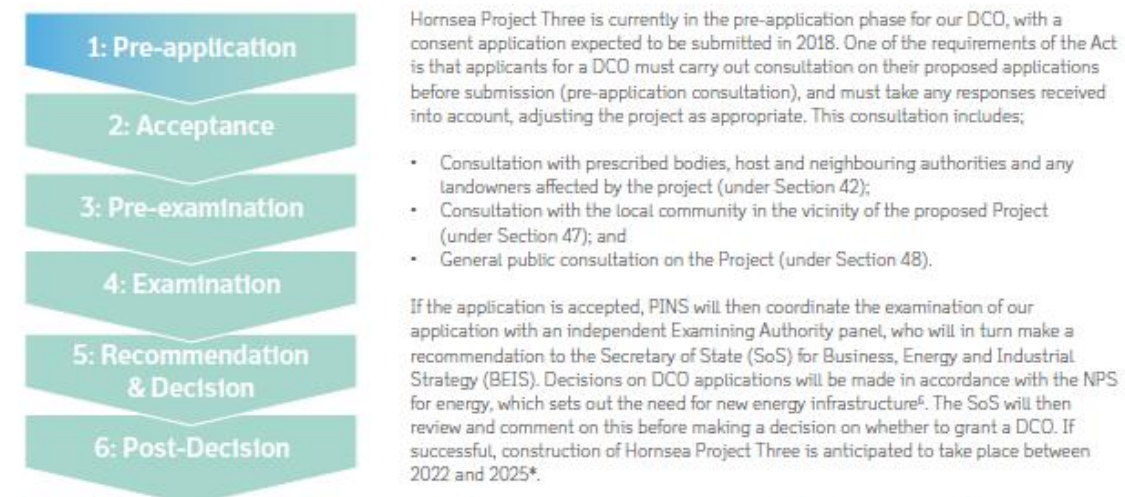


Figure 2: Six stages of the development consent regime. The consultation process for Hornsea Project Three has been summarised below and further information is detailed in section 8.

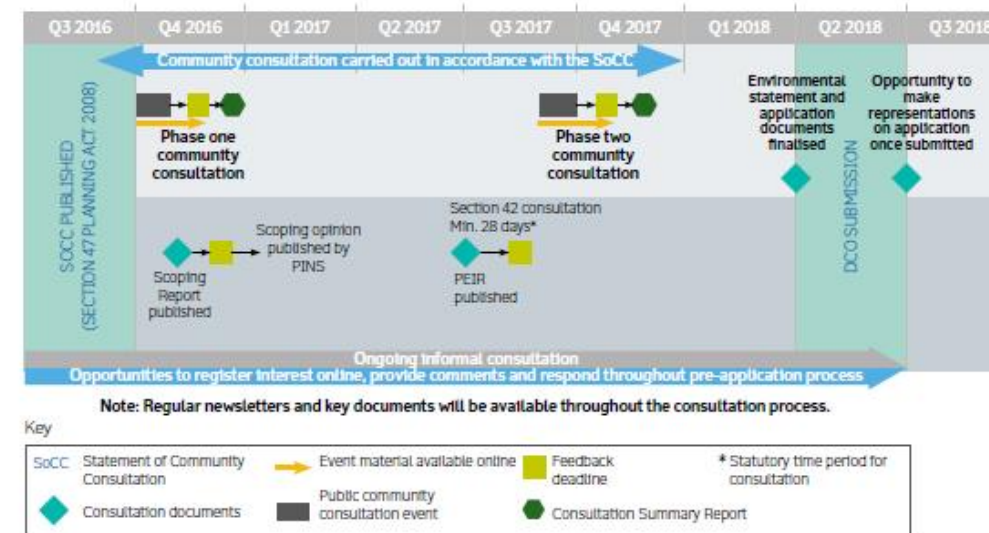


Figure 3: Public Consultation Diagram

⁶ DECC (July 2011). National Policy Statement for Energy (EN-1). Available online: https://www.gov.uk/government/uploads/system/uploads/attachment_data/file/47854/1938-overarching-nps-for-energy-en1.pdf

* These dates are indicative and subject to change.

6. Project Description

Hornsea Project Three will have a total generating capacity of up to 2,400 megawatts (MW). Hornsea Project Three will connect to the Norwich Main National Grid Substation, located to the south of Norwich. The DCO will include all associated offshore and onshore infrastructure, including electrical grid connection works.

6.1 Infrastructure overview

The components comprising the offshore wind farm are likely to include (see Figure 4):

- Wind turbines (up to 400);
- Turbine foundations (up to 400);
- Array cables (linking the individual wind turbines to an offshore substation);
- Scour protection;
- Offshore accommodation platform(s) (up to 3); and
- A HVAC or HVDC transmission system including either:

HVAC (High Voltage Alternating Current)	HVDC (High Voltage Direct Current)
• Offshore transformer substation(s) (up to 12);	• Offshore transformer substation(s) (up to 12);
• Offshore interconnector cables(s);	• Offshore interconnector cables(s);
• Offshore export cable(s) (up to 6);	• Offshore converter substation(s) (up to 4);
• Offshore HVAC booster station(s) (up to 4 sub surface or 6 sub sea);	• Offshore export cables(s) (up to 6);
• Buried onshore export cable(s) (up to 6);	• Buried onshore export cables(s) (up to 6);
• Onshore HVAC booster station;	• Onshore substation; and
• Onshore substation; and	• Buried grid connection export cable(s).
• Buried grid connection export cable(s).	

The electricity generated from Hornsea Project Three will be transmitted via buried High Voltage (HV) cables using either Direct Current (DC) or Alternating Current (AC), or a combination of the two.

Technical Term	Definition
Array area.	This is where the offshore wind farm will be located, which will include the wind turbines, wind turbine foundations, array cables, and a range of offshore substations and offshore interconnector cables;
Offshore ECR corridor search area.	This is where the offshore export cable will be located, as well as the offshore HVAC booster station(s) (if required); and
Onshore ECR corridor search area.	This is where the onshore export cable will be located, as well as the onshore HVAC booster station (if required), onshore substation and connections to the national grid.

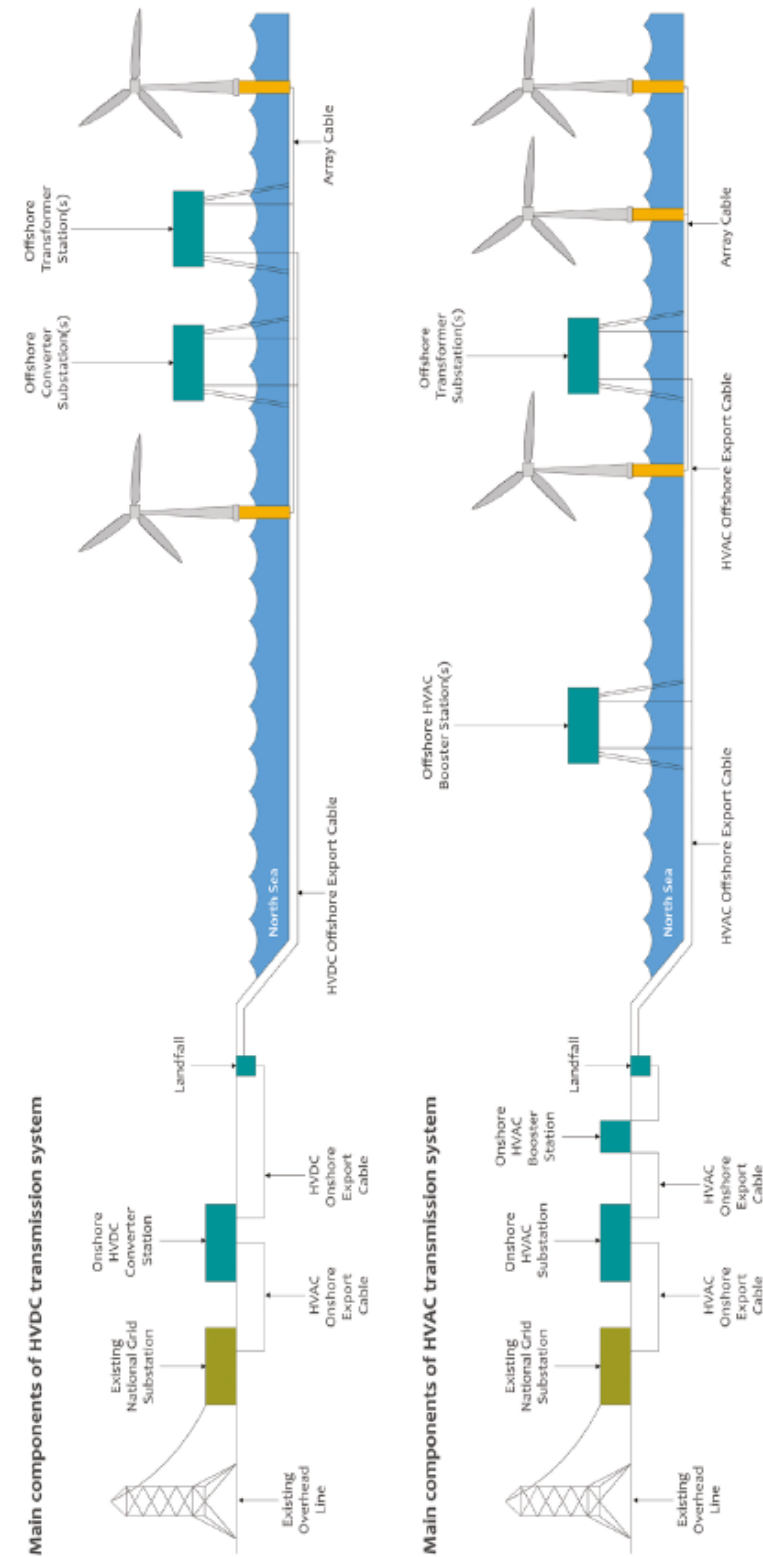


Figure 4: Main components of High Voltage Direct Current (HVDC) and High Voltage Alternating Current (HVAC) transmission options for Hornsea Project Three.

7. Offshore Works

Up to 400 turbines will be located within the offshore array area. We are currently exploring an area of 696 km², over 17 times the size of Norwich, located approximately 120 km off the North Norfolk coast.

Electricity generated by the offshore wind turbines will be brought onshore by up to 6 subsea export cables, via an offshore HVAC substation (if required) before making landfall along the North Norfolk coast in the vicinity of Sheringham. The Hornsea Project Three Offshore Export Cable Route (ECR) corridor scoping area extends from the Norfolk coast, offshore in a north easterly direction to the western and southern boundary of the Hornsea Project Three array area and the ECR corridor is approximately 120 km in length (Figure 5).

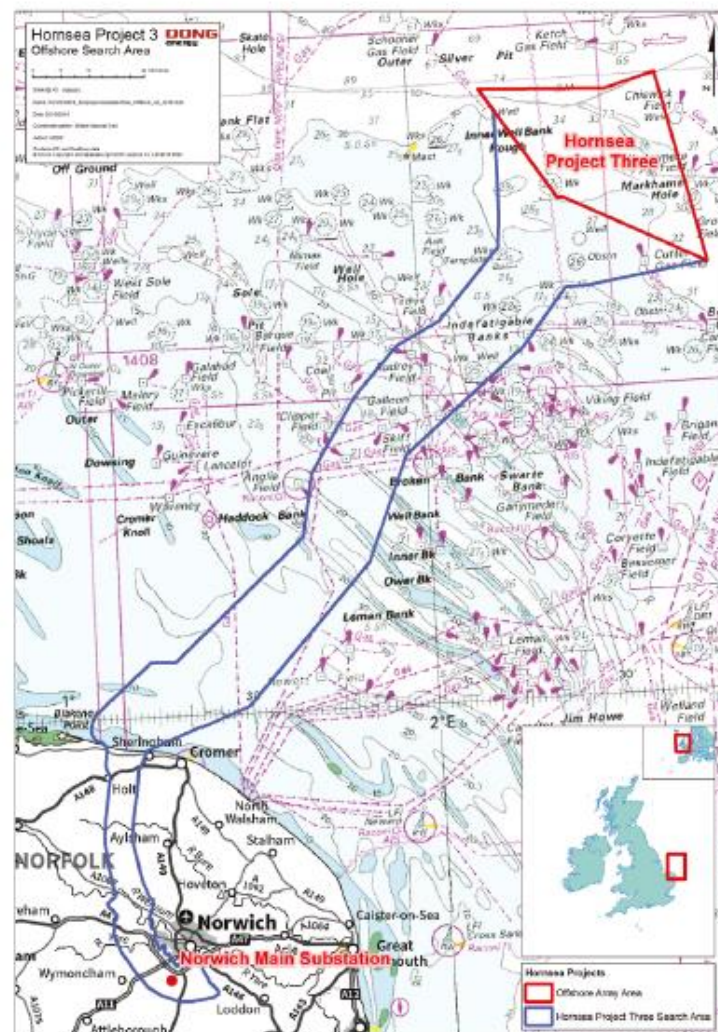


Figure 5: Map showing the offshore array area and offshore ECR search area.

8. Onshore Works

We are currently reviewing environmental constraints and collecting data from the onshore cable search area within a corridor approximately 5 km wide, extending from the proposed landfall area, in the vicinity of Sheringham on the North Norfolk coast, and travelling southwards to connect into Norwich Main National Grid Substation. This includes exploring potential sites for locating the onshore substation in the vicinity (3 km radius) of the existing Norwich Main National Grid Substation.

From the Norfolk coast, onshore cables will be buried and connect the offshore wind farm to an onshore High Voltage Alternating Current (HVAC) Substation/High Voltage Direct Current (HVDC) Converter Substation, which will in turn connect to the existing Norwich Main National Grid Substation. The onshore ECR corridor search area is approximately 55 km in length (Figure 6).

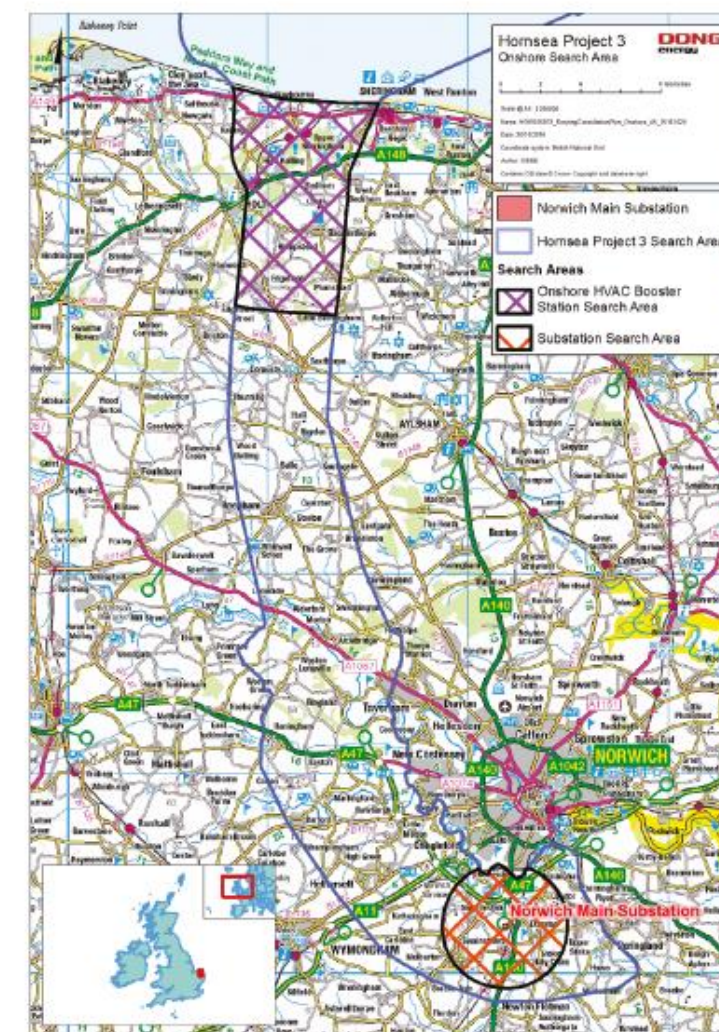


Figure 6: Onshore ECR search area, including substation search areas.

Should Hornsea Project Three be developed as a HVAC connection, the Project would need to construct a HVAC booster station to mitigate against transmission losses of power between the offshore wind farm itself and the national grid connection point. Depending on the outcome of the assessment process and technical feasibility the HVAC booster station could be situated offshore and/or onshore. Due to technical reasons, the Onshore HVAC booster station would need to be located as close to the cable landfall at the coast as possible, recognising environmental sensitivities. Therefore, Hornsea Project Three has sought to identify sites for the Onshore HVAC booster station within approximately 10 km of the coastline to make it effective.

9. Site Selection Process

As the Project develops, we will refine the onshore and offshore export cable route areas, and provide a selection of potential turbine layouts for the purpose of assessing environmental impacts of the wind farm array. Further refinement of the Project Description will present one or more cable route(s), including required substation(s) options being considered. These will be presented during Phase Two Consultation for you to comment on.

Consultation will run in parallel to internal feasibility studies, to provide stakeholders with the opportunity to review and influence the route planning and site selection process as part of the overall project development.

The site selection process will take a number of factors into consideration, including the potential impact on the following;

- Biological environment (e.g. birds and marine mammals, onshore ecology, environmentally sensitive areas);
- Physical environment (e.g. marine processes, land use, ground conditions); and
- Human environment (e.g. fisheries, archaeological and cultural sites, developed areas, recreational activities, shipping).

Where possible the Project will adhere to the following principles, including but not limited to:

- Select the most direct route possible to reduce impact area;
- Avoid/minimise environmental and culturally designed sites;
- Avoid developed areas (e.g. residential and commercial areas and land allocated for residential and commercial development in the local development plan);
- Minimise road, river and rail crossings and other existing infrastructure;
- Avoid flood risk areas;
- Must have technical feasibility;
- Consider the anticipated cumulative impact with other existing and planned projects; and
- Avoid/minimise impact on recreational areas (e.g. Public Rights of Way).

More information on the Site Selection Process will be available in the Project Environmental Information Report (PEIR) in 2017 and the final Environmental Statement (ES) submitted as part of the consent application in 2018.

10. Pre-application Consultation

10.1 Statement of Community Consultation

Hornsea Project Three has published a Statement of Community Consultation (SoCC⁷) for Hornsea Project Three, in accordance with Section 47 of the Act. The purpose of this document is to clearly explain how we intend to consult with local communities in the vicinity of the development, on the proposed Project.

It explains how members of the public can access information on the Project, how they can engage in the consultation process and play an active role in developing the proposals, and finally how they will receive feedback and be kept informed about the progress and outcomes of the consultation.

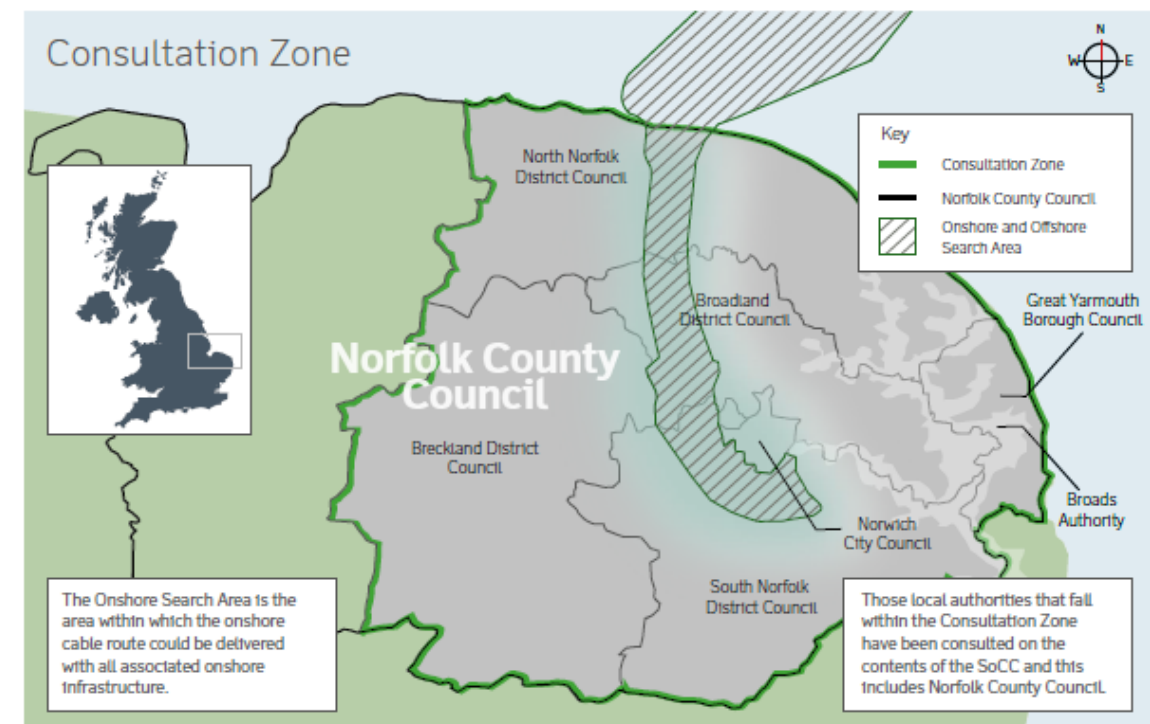


Figure 5: Map showing the onshore search area and Consultation Zone, including those authorities consulted on the contents of the SoCC (under section 47(2)). Since issuing the SoCC in September the search area has been refined slightly, the new area is presented in the Scoping Report and all public documents going forward.

The SoCC is available to download on our website (www.dongenergy.co.uk/hornseaproject3) and hard copies are available at a number of council offices and Community Access Points (CAP sites) across the Consultation Zone. The SoCC has also been advertised locally in newspapers (in accordance with Section 47(6)) and via social media to ensure maximum visibility. Prior to publishing our SoCC, we consulted the relevant local authorities on the contents of the SoCC, to ensure that we selected the most appropriate methods of consultation for your area⁸.

Please see Appendix 2 for a full list of locations at which the SoCC is available.

⁷ Hornsea Project Three Offshore Wind Farm – Statement of Community Consultation (SoCC) (September 2016). Available online: <http://www.dongenergy.co.uk/SoCC>

⁸ The local authorities consulted on the SoCC were identified as those authorities which had the potential to be directly impacted by the proposed development, or those in close proximity to the impacted area who could be indirectly impacted.

10.2 Environmental Information

As Hornsea Project Three falls within the scope of the Environmental Impact Assessment Directive, an Environmental Impact Assessment (EIA) of the Project (for both offshore and onshore elements) will be undertaken in accordance with the Infrastructure Planning (Environmental Impact Assessment) Regulations 2009.

The following documents form part of the EIA and will be available to you during the consultation process:



Published:
Scoping Report

Information on the existing offshore and onshore environments in the location of the proposed development and the key issues for the EIA.

The EIA Scoping Report has been published for information, as part of our Phase One Consultation. The report is intended to ensure that the Applicant (DONG Energy) has identified the key issues for the EIA. The Project will submit the Scoping Report to PINS who will seek comments on the report on behalf of the SoS from statutory and non-statutory bodies before issuing a Scoping Opinion that confirms the issues that must be addressed in the EIA. Copies of the Scoping Report are available via the Hornsea Project Three website once it has been issued to PINS.

An Environmental Statement (ES) will be submitted alongside our application for development consent in 2018, and prior to this a draft version of this document (also known as the Preliminary Environmental Information Report (PEIR)) will be available during Phase Two Consultation in 2017 for formal consultation seeking responses to this. The EIA will consider the environmental, social and economic impacts of the proposed development.



Preliminary Environmental
Information Report (PEIR)

This document will incorporate the findings of initial surveys and assessments and will enable consultees to develop an informed view of the potential environmental effects.



Final Environmental
Statement (ES)

The final ES will build on the PEIR and consultation responses to document the impact assessment and proposed mitigation measures.

10.3 Community Consultation Events

The Project will hold a minimum of two rounds of community consultation events at various locations in local planning authority areas across the Consultation Zone.

These events fall into two phases. The first (informal) phase broadly coincides with issuing the EIA Scoping Report to PINS and the second phase aligns with formal consultation on the Preliminary Environmental Information Report (PEIR). See page 7 for a diagram of these phases, and Appendix 1 for a full list of community consultation events being held in 2016.

10.3.1 Phase One (Informal)

Publication of the SoCC on 30th September 2016 marked the start of Phase One (informal) Consultation. Informal consultation with stakeholders has been ongoing since March 2016.

At the first set of events, the Project will talk through and provide maps showing the onshore and offshore search area (the area in which the proposed development could be constructed). Members of the public will be asked to comment on these plans, and attendees will have the opportunity to complete a feedback form.

Following these events, we will review the feedback and produce a short summary report, which will capture the views and concerns raised during Phase One Consultation. The feedback we receive at the Phase One Consultation events will help us to refine our search area and inform the preferred cable route, which will be presented at the Phase Two (formal) Consultation.

10.3.2 Phase Two (Formal)

Information about the environmental surveys and progress on the Environmental Impact Assessment and proposed mitigation for the Project will be available during Phase 2 Consultation in the form of a PEIR.

This document in addition to other updates shown via charts, banners and leaflets will be available at the second round of community consultation events. This is scheduled to take place during the second half of 2017, where members of the public will also be able to view our preferred cable route and substation locations and comment on these plans.



11. Let us know your thoughts

We appreciate you taking the time to hear more about our Project and we hope that you have found the information presented in this information pack useful. We are in the early stages of Project development, and want to hear your views on our proposals. The information provided in this document is only our initial thoughts and more information will be available as the Project develops.

We would value your thoughts on all aspects of our proposal;

- Tell us what you think of our plans for public consultation;
- Tell us what you think of our initial proposal; and
- Let us know of any aspects relating to the Project that you think we should be aware of.

You can provide feedback on this initial information by;

- Talking directly with a member of the team at one of our consultation events;
- Drawing/commenting directly on our foam boards at one of our consultation events; and
- Completing a feedback form (online version available).

The deadline for submitted information at this initial stage of the consultation process is **Monday 28th November 2016**.

A period of time will then be given for us to review all of the feedback we have received at this first stage of (Informal) consultation, and a Consultation Summary Report will be produced which will summarise your views and concerns.

You can also comment on our plans throughout the consultation period using one of the channels on the next page.



12. Project Contact Information



Website: www.dongenergy.co.uk/hornseaproject3

Read the latest information on Hornsea Project Three, including our plans for public consultation on our dedicated website.



Freephone Information Line: 0800 0288 466

This Freephone Information line is open for calls between 9am and 5pm, Monday to Friday, with an answer phone facility to take calls outside these hours. The information line allows members of the local community to ask questions about Hornsea Project Three and the consultation process.



Enquiries Email: contact@hornsea-project-three.co.uk

The enquiries email allows members of the local community to put general questions or comments in writing about Hornsea Project Three.



Community Access Points (CAP sites)

CAP sites are places where the public can obtain information about Hornsea Project Three. They are local sites easily accessible to people in the area, such as shops, libraries and community buildings. You can find your nearest CAP site by using our online mapping tool on our website.



Newsletters

Quarterly newsletters will contain information about Hornsea Project Three and the progression of the consultation process. Newsletters will be sent to local authorities, council offices and CAP sites, as well as being available online through the website.



Events

We will keep local communities up to date at events such as exhibitions and meetings during the consultation period. Event details will be published in our newsletters, on our website and shared with local groups such as Parish Councils.



Twitter: [#DONGEnergyUK #HornseaProject3](https://twitter.com/DONGEnergyUK)

We will tweet about Project developments and activities during the consultation period so that you can keep up to date using social media.



Send us a letter:

Hornsea Project Three Offshore Wind Farm,
c/o Emily Woolfenden,
DONG Energy Power (UK) Ltd,
5 Howick Place, Victoria, London, SW1P 1WG



Appendix

Appendix 1: List of Phase 1 Community Consultation Events

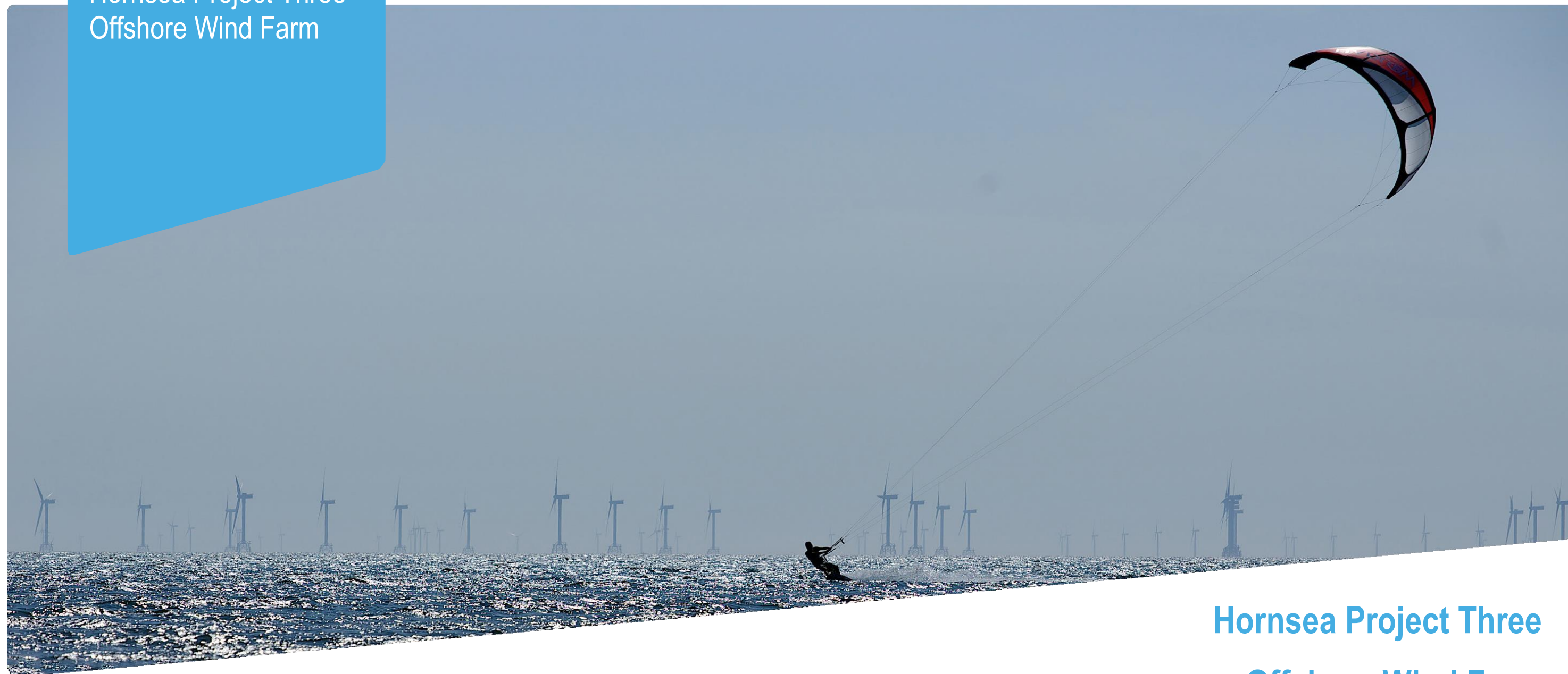
Monday 31st October 2016 3pm – 7pm Sheringham Community Centre, Holway Road, Sheringham, NR26 8NP
Wednesday 2nd November 2016 3pm – 7pm Aylsham Town Council, Town Hall, Market Place, Aylsham, Norfolk, NR11 6EL
Thursday 3rd November 2016 3pm – 7pm The Green Britain Centre, Turbine Way, Swaffham, PE37 7HT
Monday 7th November 2016 3pm – 7pm Great Yarmouth Town Hall, Hall Plain, Great Yarmouth, NR30 2QF
Tuesday 8th November 2016 2pm – 5:30pm Harford Community Centre, Harford Park, Peterkin Road, Norwich, NR4 6LQ
Wednesday 9th November 2016 2pm – 6:30pm Blackfriars' Hall, St Andrews St, Norwich, NR3 1AU

Appendix 2: List of Council Offices where the SoCC is available

- North Norfolk District Council**
 Council Offices, Holt Road, Cromer, Norfolk, NR27 9EN
 Monday, Tuesday and Thursday: 8:30am-5pm
 Wednesday: 10am-5pm
 Friday: 8:30am-4:30pm
- Broadland District Council**
 1 Yarmouth Road, Thorpe St Andrew, Norwich, NR7 0DU
 Monday-Friday: 8:30am-5pm
- South Norfolk District Council**
 South Norfolk House, Cygnet Court, Long Stratton, Norwich, NR15 2XE
 Monday-Friday: 8:15am-5pm
- Broads Authority**
 Yare House, 62-64 Thorpe Road, Norwich, NR1 1RY
 Monday-Friday: 9am-5pm
- Breckland District Council**
 Elizabeth House, Walpole Loke, Dereham, NR19 1EE
 Monday-Thursday: 8am-6pm
- Great Yarmouth Borough Council**
 Town Hall, Hall Plain, Great Yarmouth, NR30 2QF
 Monday-Friday: 9am-5pm
- Norwich City Council**
 City Hall, St Peters Street, Norwich, NR2 1NH
 Monday-Friday: 8am-5pm
 Customer Centre: Monday, Tuesday, Thursday and Friday: 8:45am-5pm, Wednesday: 1pm-5pm
- Norfolk County Council**
 County Hall, Martineau Lane, Norwich, Norfolk, NR1 2DH
 Monday-Friday: 9am-5pm



Hornsea Project Three
Offshore Wind Farm



Hornsea Project Three Offshore Wind Farm

Consultation Report: Annex 11
Section 2 – Phase 1 Exhibition Banners

Date: May 2018

Hornsea 3
Offshore Wind Farm

Orsted



Welcome to the
**Hornsea Project Three
Offshore Wind Farm**
Community Consultation Event

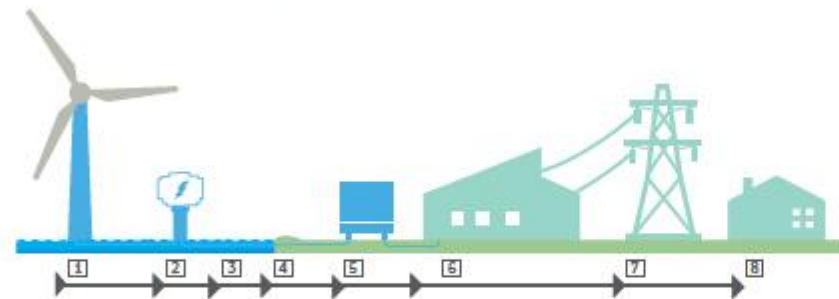
Hornsea Project Three Offshore Wind Farm

DONG Energy is proposing to develop a new offshore wind farm (Hornsea Project Three), in the North Sea, located approximately 120 km off the North Norfolk coast.

Who is DONG Energy?

DONG Energy is the global leader in offshore wind power; we are an oil and gas producer and a leading energy supplier to the industrial and commercial market. Headquartered in Denmark, we have been in the UK since 2004.

The UK is now our primary market for offshore wind power production. We have invested around £6 billion in the UK and plan to double this investment by 2020. We are committed to innovation, taking a lead in driving down the costs of wind power and developing innovative solutions for our energy customers.



Components of a typical offshore wind farm

- | | |
|--|---------------------------------------|
| 1. Offshore wind turbines and inter array cables | 5. DONG Energy onshore substation |
| 2. Offshore substation | 6. Existing National Grid substation |
| 3. Offshore export cable and landfall | 7. Existing National Grid power lines |
| 4. Onshore export cable | 8. Homes |

Hornsea 3
Offshore Wind Farm

*This figure assumes a coefficient of performance of 0.75 and a household consumption of 4.1 MWh per year. Source: Ofgem (July 2016).



If built out to full capacity, Hornsea Project Three could be the world's largest offshore wind farm, capable of powering well over **2 million** UK homes¹.



DONG
energy

1) This figure is based on the assumptions in the project description. Details and figures are based on available information and are subject to change.

www.dongenergy.co.uk/hornseaproject3

Consultation Process

The planning process

Hornsea Project Three is a Nationally Significant Infrastructure Project (NSIP) and must apply for a Development Consent Order (DCO) under the Planning Act 2008 (the Act). Consents for the wind farm, the offshore and onshore cable route (including substations and final grid connection) will be included in the DCO.

Hornsea Project Three is currently in the pre-application phase for the DCO, with a consent application expected to be submitted in 2018.

If successful, construction of Hornsea Project Three could take place between 2022 and 2025².

We are in the early stages of developing Hornsea Project Three and are looking for your input to help shape the Project as it progresses.

For more information on our plans for community consultation, please see our Statement of Community Consultation (SoCC).

Guidance on the planning process can be found on the PINS website at: <http://infrastructure.planninginspectorate.gov.uk/legislation-and-advice/>

²Data are indicative and are subject to change

Public consultation

The Project will hold a minimum of two rounds of community consultation events at various locations across the consultation area. These events fall into two phases:

Phase One – Informal consultation on initial Project information, including the consultation process and considerations for siting the proposed infrastructure.

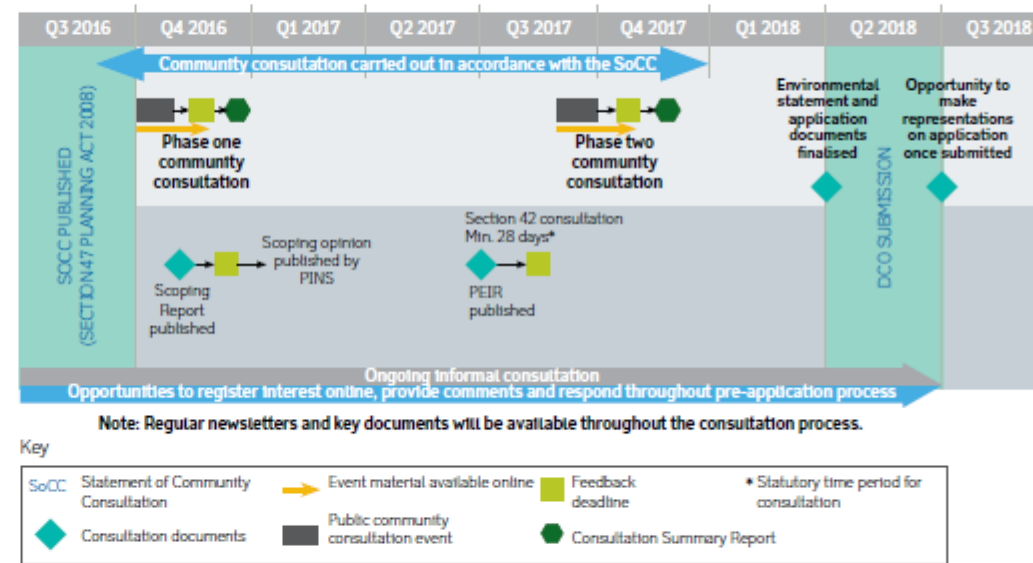
Phase Two – Formal consultation on the contents of our Preliminary Environmental Information Report (PEIR) and preferred cable route and substation locations.

Letting us know your views

Your views are important to us and your feedback today will feed into the site selection process. You can provide feedback on the information you have received through the following channels:

- By talking directly with a member of the team
- By drawing/commenting directly on our foam boards
- By completing a feedback form

After the events we will publish a Consultation Summary Report, which will provide an overview of all of the views expressed at this first set of events.



All graphics in this document are for illustrative purposes. Dates and figures are based on available information and are subject to change

Offshore

Up to 400 turbines will be located within the offshore array area. We are currently exploring an area of 696 km², over 17 times the size of Norwich, located approximately 120 km off the North Norfolk coast.

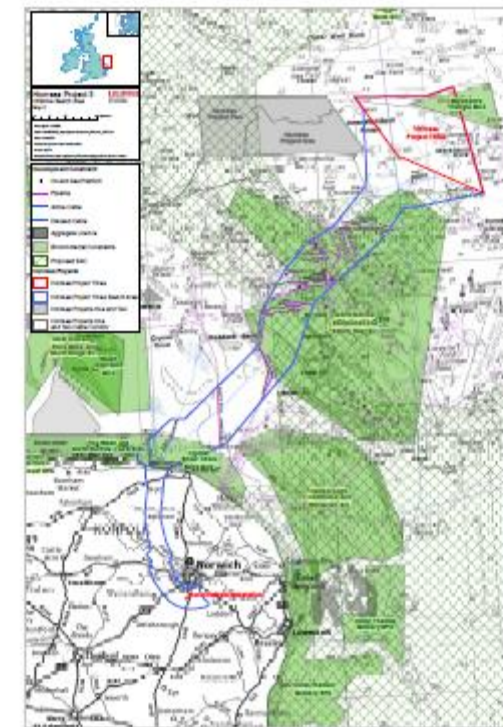
Electricity generated by the offshore wind turbines will be brought onshore by up to six subsea export cables, via an offshore High Voltage Alternating Current (HVAC) booster station (if required) before making landfall along the North Norfolk coast in the vicinity of Sheringham.

The site selection process will take a number of factors into consideration, including the potential impact on the following:

- **Biological environment** (e.g. birds and marine mammals, environmentally sensitive areas)
- **Physical environment** (e.g. seabed conditions, marine processes)
- **Human environment** (e.g. fisheries, archaeological sites, recreation, shipping)

As the Project develops, we will refine these areas. A selection of potential turbine layouts (for the purpose of assessing environmental impacts) and one or more offshore export cable route options (including required substation(s) options being considered) will be presented during Phase Two Consultation.

Please take this opportunity to view the maps we have provided on the table and highlight any features that you would like to make us aware of within the search area.



Onshore

We are currently reviewing environmental constraints and collecting data from the onshore cable search area within a 5 km corridor. This extends from the proposed landfall area (in the vicinity of Sheringham, on the North Norfolk coastline) and travels southwards to connect into Norwich Main National Grid Substation.

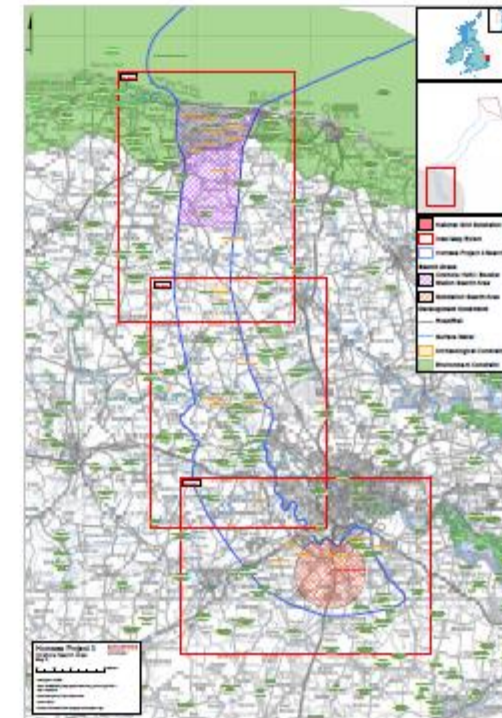
This includes exploring potential sites for locating the onshore substation in the vicinity (3 km radius) of the existing National Grid substation and the onshore High Voltage Alternating Current (HVAC) booster station (if required) within approximately 10 km of the cable landfall at the coast.

The site selection process will take a number of factors into consideration, including the potential impact on the following:

- **Biological environment** (e.g. onshore ecology, environmentally sensitive areas)
- **Physical environment** (e.g. land use, ground conditions)
- **Human environment** (e.g. archaeological and cultural sites, developed areas, recreational activities, infrastructure)

As the Project develops, we will refine these areas. One or more onshore cable route(s) and required onshore substation(s) will be presented during Phase Two Consultation for you to comment on.

Please take this opportunity to view the maps we have provided on the table and highlight any features that you would like to make us aware of within the search area.



www.dongenergy.co.uk/hornseaproject3



We want to hear from you.

At DONG Energy, we prioritise engaging with the communities in which we work. Throughout the consultation period for Hornsea Project Three, you will be able to get in touch with us using any of the channels listed below.



Website: www.dongenergy.co.uk/hornseaproject3
Read the latest information on Hornsea Project Three, including our plans for public consultation on our dedicated website.



Freephone Information Line: 0800 0288 466
This Freephone Information Line is open for calls between 9am and 5pm, Monday to Friday, with an answer phone facility to take calls outside these hours. The information line allows you to ask questions about Hornsea Project Three and the consultation process.



Enquiries Email: contact@hornsea-project-three.co.uk
The enquiries email allows you to put general questions or comments in writing about Hornsea Project Three.



Community Access Points (CAP sites)
CAP sites are places where you can obtain information about Hornsea Project Three. They are local sites easily accessible to people in the area, such as shops, libraries and community buildings. You can find your nearest CAP site by using our online mapping tool on our website.



Newsletters
Quarterly newsletters will contain information about Hornsea Project Three and the progression of the consultation process. Newsletters will be sent to local authorities, council offices and CAP sites, as well as being available online through the website.



Events
We will keep you up to date at events such as exhibitions and meetings during the consultation period. Event details will be published in our newsletters, on our website and shared with local groups such as Parish Councils.



Twitter: [@DONGEnergyUK](https://twitter.com/DONGEnergyUK) [#HornseaProject3](https://twitter.com/HornseaProject3)
We will tweet about Project developments and activities during the consultation period so that you can keep up to date using social media.



Send us a letter
Hornsea Project Three Offshore Wind Farm,
c/o Emily Woolfenden,
DONG Energy Power (UK) Ltd,
5 Howick Place, Victoria, London, SW1P 1WG

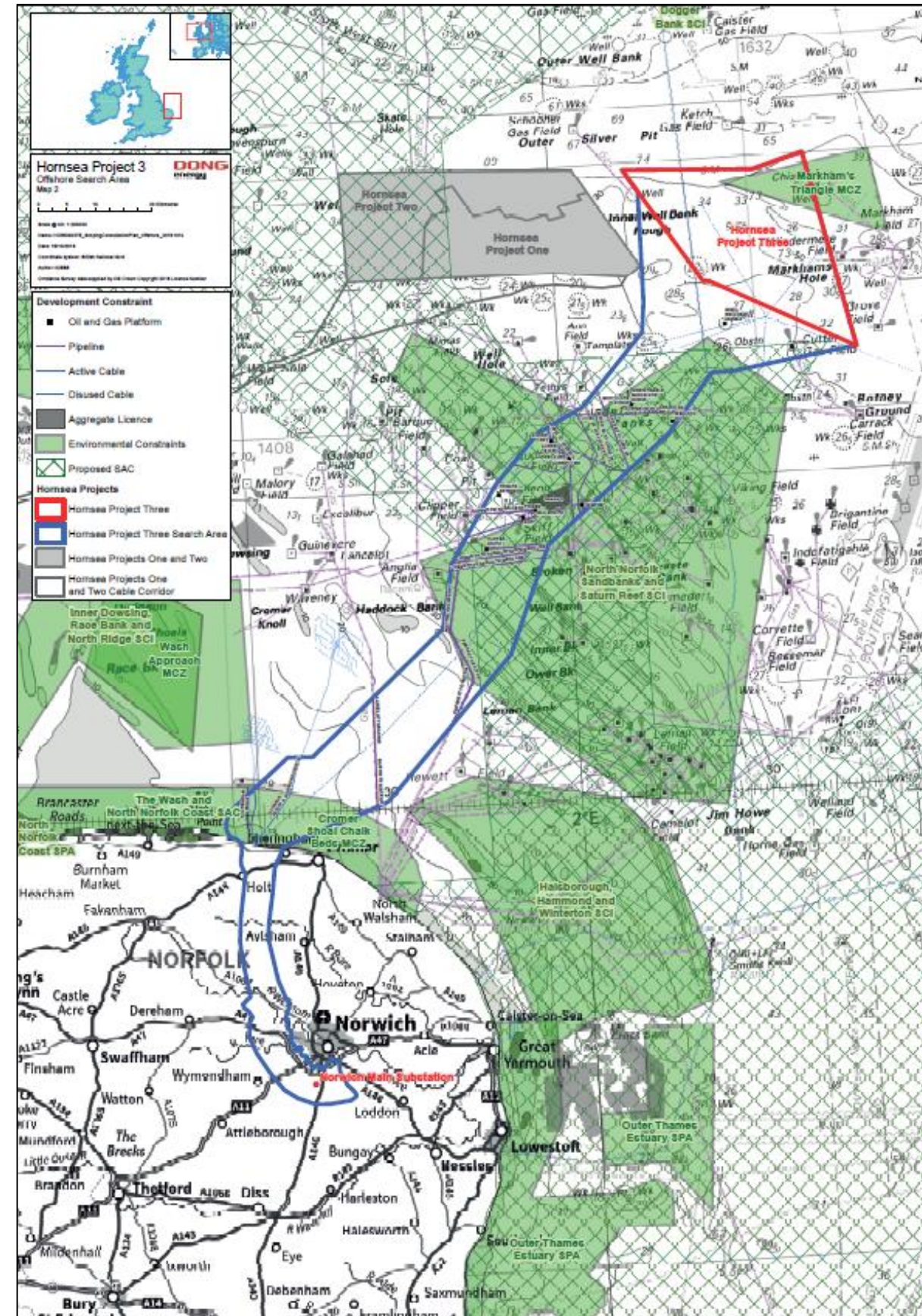
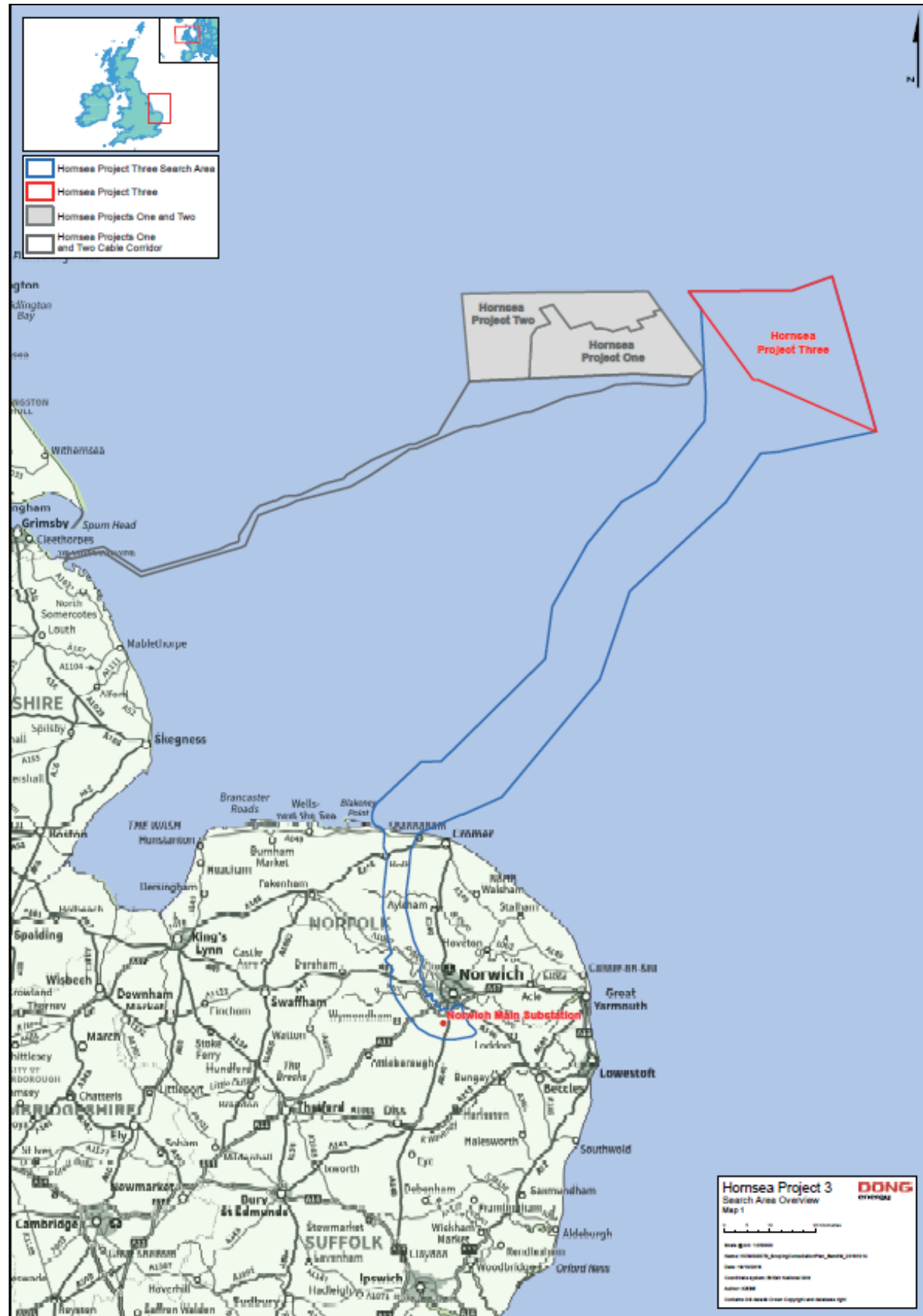
Hornsea Project Three
Offshore Wind Farm

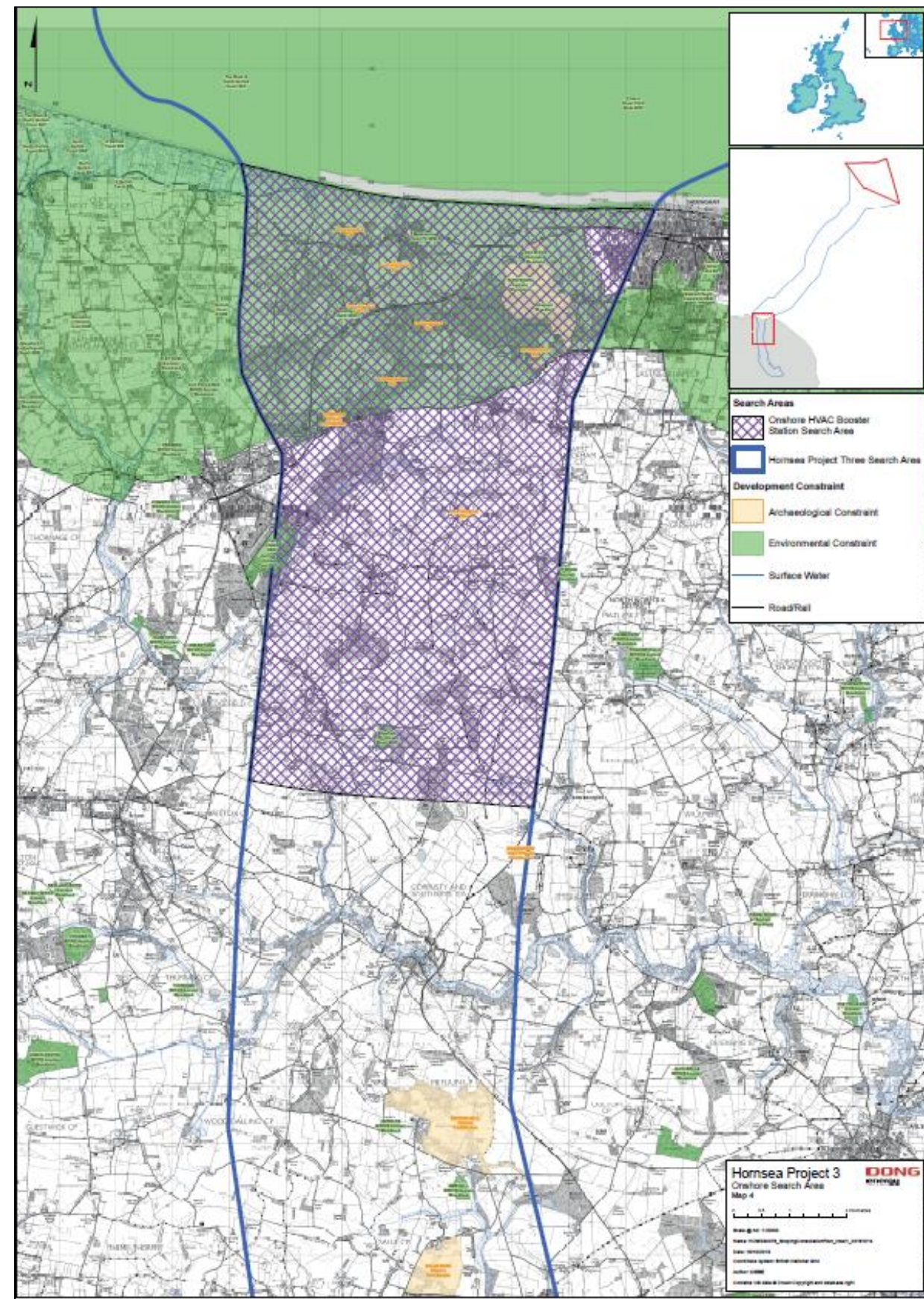
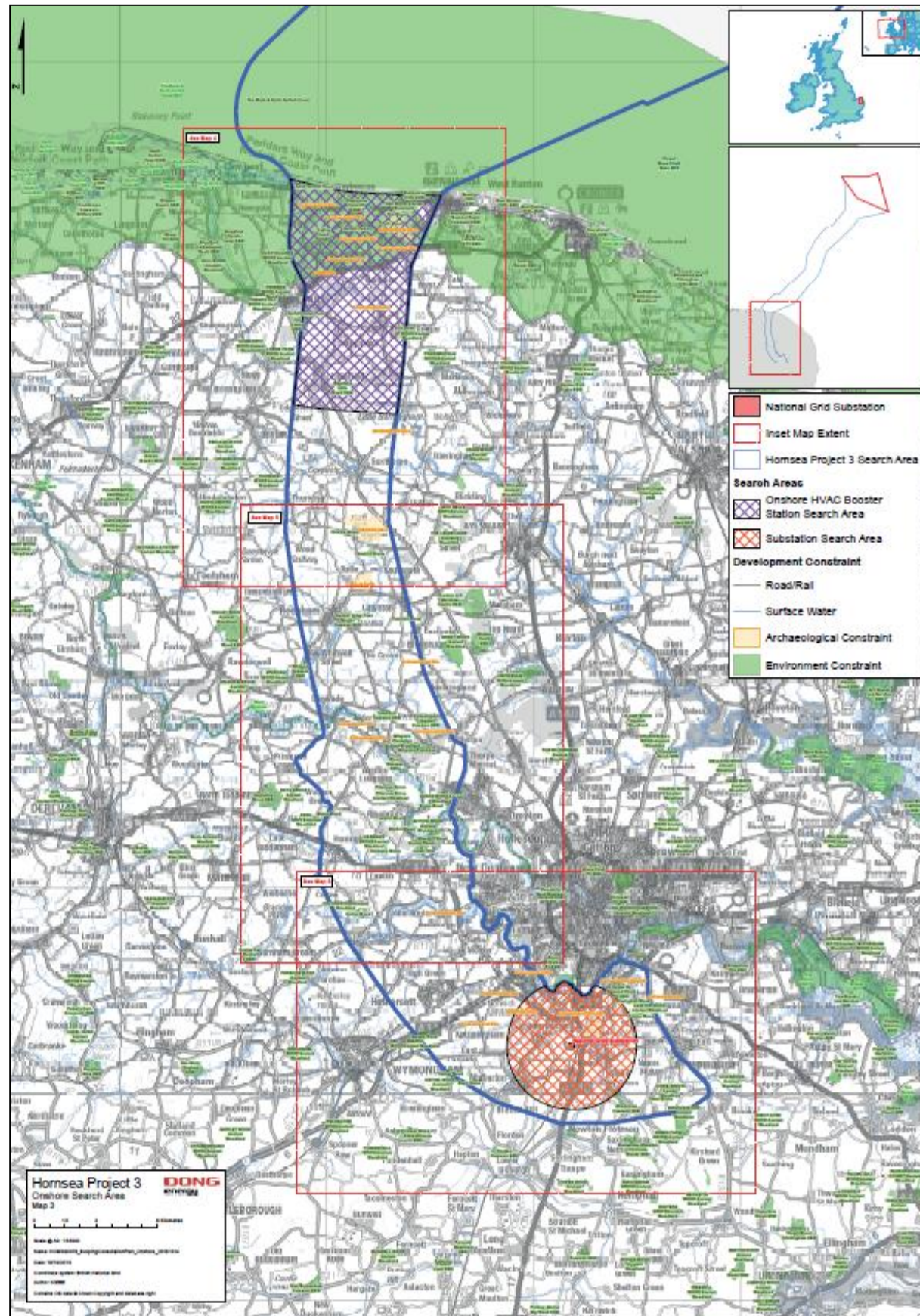


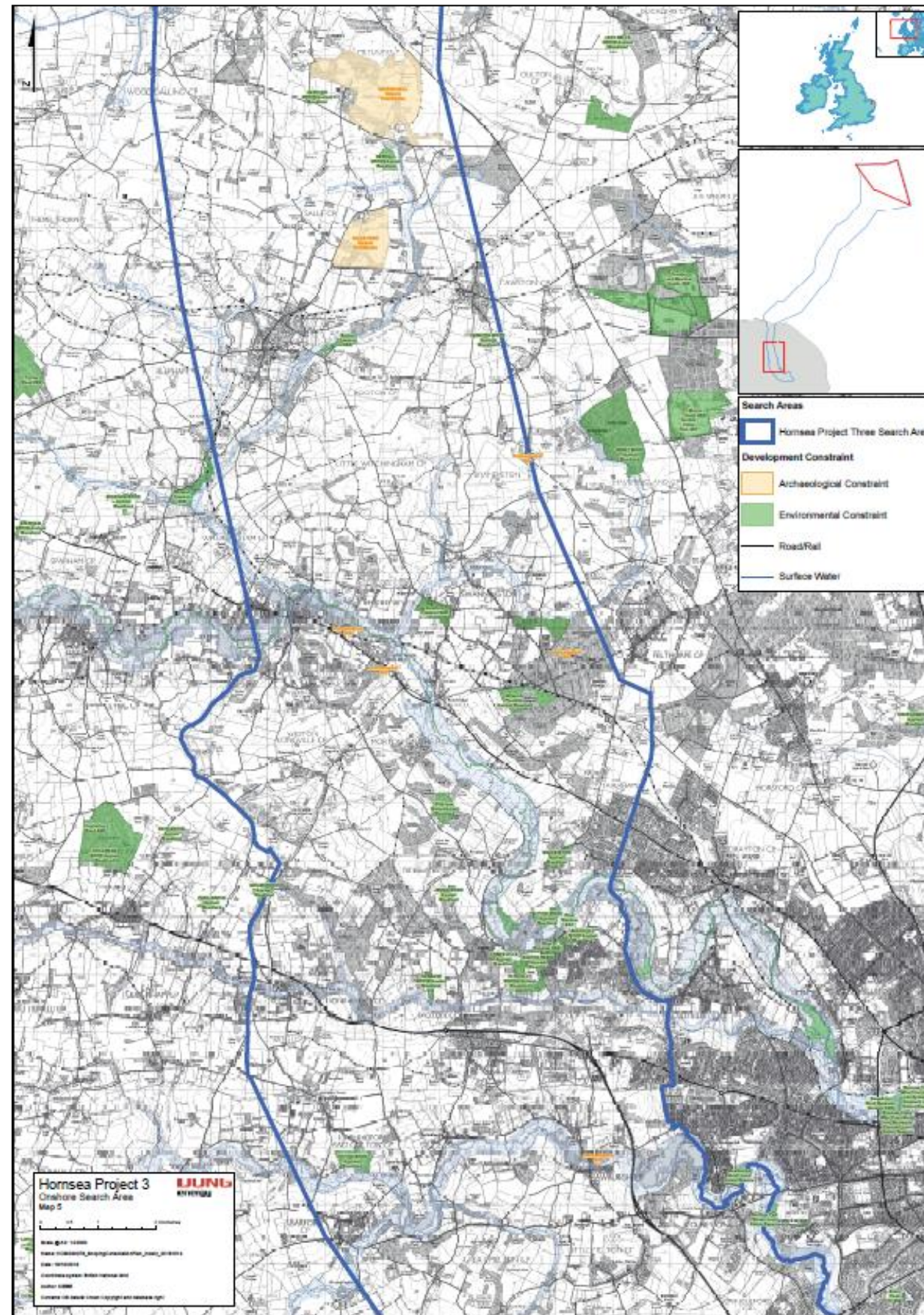
**Hornsea Project Three
Offshore Wind Farm**

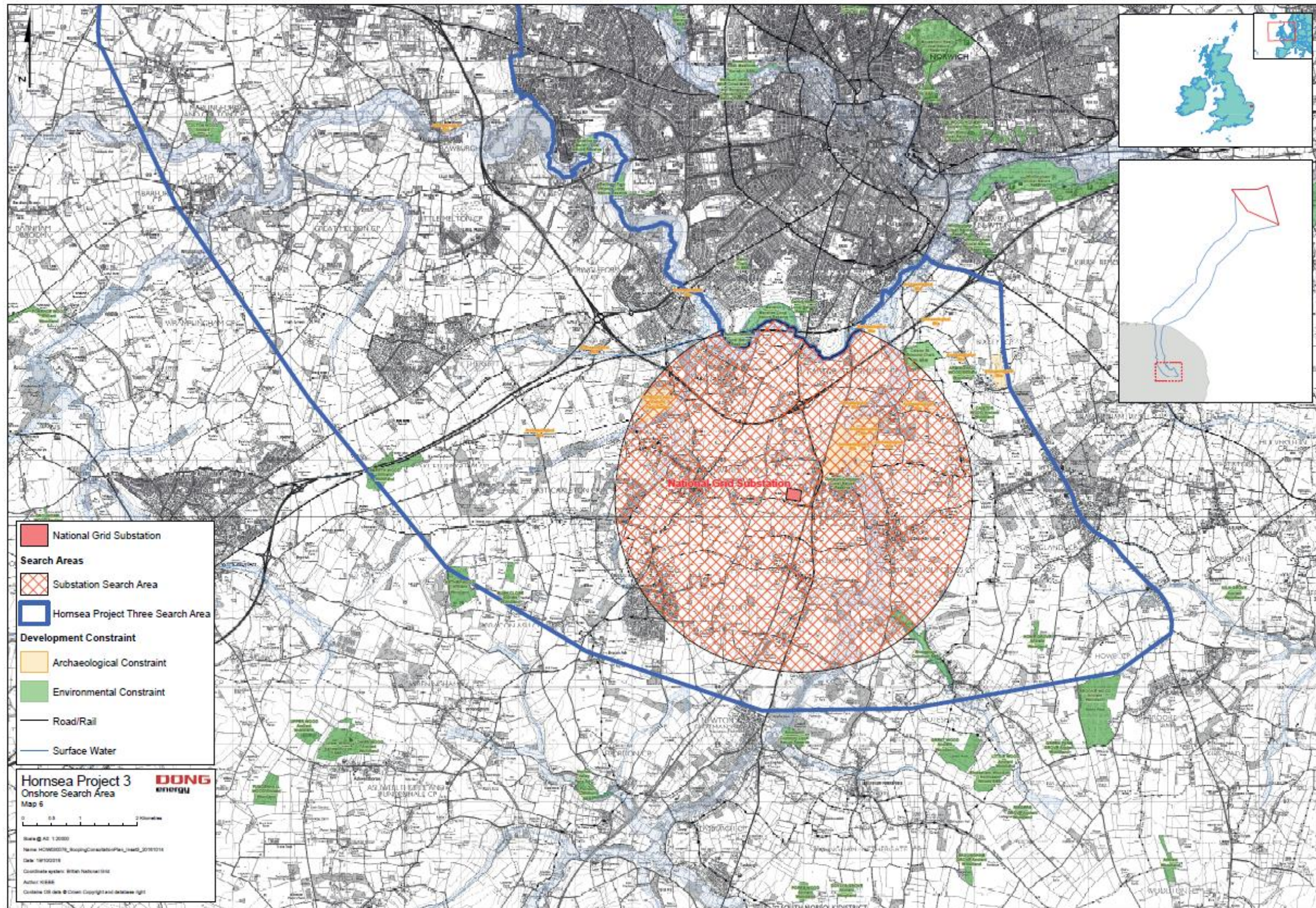
Consultation Report: Annex 11
Section 3 – Phase 1 Consultation Plans

Date: May 2018









Hornsea Project Three
Offshore Wind Farm



Hornsea Project Three
Offshore Wind Farm

Consultation Report: Annex 11
Section 4 – Phase 1 Publicity

Date: May 2018



Hornsea Project Three Offshore Wind Farm Community Consultation Events

DONG Energy are holding a series of community consultation events to present details of the proposed Hornsea Project Three Offshore Wind Farm and to listen to your views and feedback.

These events will take place at the following venues:

Monday 31st October 2016, 3pm – 7pm

Sheringham Community Centre, Holway Road, Sheringham, NR26 8NP

Wednesday 2nd November 2016, 3pm – 7pm

Aylsham Town Council, Town Hall, Market Place, Aylsham, NR11 6EL

Thursday 3rd November 2016, 3pm – 7pm

The Green Britain Centre, Turbine Way, Swaffham, PE37 7HT

Monday 7th November 2016, 3pm – 7pm

Great Yarmouth Town Hall, Hall Plain, Great Yarmouth, NR30 2QF

Tuesday 8th November 2016, 2pm – 5:30pm

Harford Community Centre, Harford Park, Peterkin Road, Norwich, NR4 6LQ

Wednesday 9th November 2016, 2pm – 6:30pm

Blackfriars' Hall, St. Andrews Street, Norwich, NR3 1AU

Members of the Project Team will be available at the events to answer questions and explain details of the proposals.

For more information, please visit:

www.dongenergy.co.uk/hornseaproject3

DONG
energy

Hornsea 3
Offshore Wind Farm

Eastern Daily Press | Thursday, October 22 2016

Follow us on Twitter @edp24

local NEWS



Landlord Ian Pinches at the Railway Arms in 2013 after it was named Camra East of Anglia Regional Cider Pub of the Year. Pictures: ARCHANT

End of the line for award-winning pub

IN BRIEF
Car which was stopping work has been moved

NORWICH: A Porsche which had been preventing Transport for Norwich and Norwich City Council from completing the painting of double yellow lines has been removed and the new road markings completed. The vehicle, belonging to Jill Stanforth (pictured) which had previously been parked on Finkelgate, is believed to have been removed overnight on Saturday - with the council finishing the work on Sunday.

Crew is on the scene after bus catches fire
SUTTON BRIDGE: A double-decker bus went up in flames in Sutton Bridge yesterday. A fire crew from Terrington helped Lincolnshire Fire and Rescue at the scene. A spokesman said they were called at about 3.20pm. No-one is believed to have been injured.

The Railway Arms
Downham Market

David Bale
david.bale@archant.co.uk

An award-winning pub that featured on television in the series Great Railway Journeys of Britain and was the last stopping-off point for thousands of thirsty rail customers has closed down, amid a row over rent.

A notice was posted this week on the window of the Railway Arms, on platform one at Downham Market station.

In the note, the tenants of seven years, who also run The Fenland Express cafe on the platform, blamed the closure on a "proposed rent increase, which we regard as excessive, and which, in our view, would adversely affect the viability of the business".

It comes just a year after staff at the pub were celebrating being named by Camra as the region's best cider pub of the year for the third consecu-

rent increase, which we regard as excessive, and which... would adversely affect the viability of the business

Pub tenants' message

...tive time. Three years ago, it was named the best cider pub in the whole country by Camra.

Andrea Briers, Rast Anglian regional director for Camra, said it was a sad day.

"I always enjoyed my visits to the pub," she added.

The Railway Arms featured on Great Railway Journeys of Britain presented by Michael Portillo in 2011. It was also spotlighted in the book Unusual Railway Pubs.

A spokesman for Great Northern, which runs rail services from Downham Market to Cambridge and London, said it was surprised to learn the tenants had handed back the keys to their unit.

"It was our understanding that negotiations were under way via our managing agent, and a very modest rent increase was offered," the spokesman added.

"After several years without an increase, we wanted to work with the tenant to ensure he stayed, as he is a valuable asset to the community.

"We would be very willing to talk to the tenant to understand why this offer was unacceptable."

Landlord Ian Pinches was unavailable for comment yesterday.

What's your reaction to the pub's closure? Email david.bale2@archant.co.uk

Weekend rail disruption to continue

Rail travellers from the region hoping to enjoy weekend days out in London in early 2017 are facing four months of more disruption on the main line as Shenfield station is rebuilt.

The Great Eastern Main Line will be closed south of either Witham or Ingatesstone every weekend from February 4, possibly until the end of May.

The work is part of long-term plans to bring about improvements to the line.

During the closures, buses will take passengers to Newbury Park tube station, adding an hour on to journey times.

Rail passengers from Norwich, Bury St Edmunds and Stowmarket are being encouraged to travel via Cambridge during the rail closures.

Hornsea 3 Offshore Wind Farm **DONG energy**

Hornsea Project Three Offshore Wind Farm

The first Hornsea Project Three Offshore Wind Farm community newsletter is now available.

For further information about the Project, and to download your copy of the newsletter, please visit our website:
www.dongenergy.co.uk/hornseaproject3

If you have any questions or comments about the Project, you can:

- Call the Freephone information line: **0800 0288 465**
- Send us an email: contact@hornsea-project-three.co.uk
- Visit us at one of our Community Consultation Events:

Monday 31st October 2016 3pm - 7pm	Sheringham Community Centre, Holway Road, Sheringham, NR26 8NP
Wednesday 2nd November 2016 3pm - 7pm	Sylsham Town Council, Town Hall, Market Place, Aytsham, Norfolk, NR11 6EL
Thursday 3rd November 2016 3pm - 7pm	The Green Britain Centre, Turbine Way, Swaffham, PE37 7HT
Monday 7th November 2016 3pm - 7pm	Great Yarmouth Town Hall, Hall Plain, Great Yarmouth, NR30 2QF
Tuesday 8th November 2016 2pm - 5.30pm	Harford Community Centre, Harford Park, Peterkin Road, Norwich, NR4 6LQ
Wednesday 9th November 2016 2pm - 6.30pm	Blackfriars' Hall, St Andrews St, Norwich, NR3 1AU

Cromer, Holt, and Sheringham Edition

NORTH NORFOLK NEWS

ARCHANT £1.00 northnorfolknews.co.uk Thursday, October 27, 2016

All smiles for Little Theatre chief

» Top prize page 14

GREAT SECTION

» TV & lifestyle
TV, food & drink, gardening, fashion, interiors & puzzles

56 PAGES OF YOUR NEWS FROM YOUR COMMUNITY

7-DAY TV

TV & lifestyle
Moores' marriage to take on race for the White House

» Airborne

Rewards for lads who cleaned up trashed park

Page 9

Pals fight back against illness

Four friends who have provided each other with unstinting support through life's ups and downs are on target to raise more than £3,000 for charity, after a double serious illness shock inspired them to organise a dinner dance and auction that sold out within minutes.

Childhood best friends Kate Bywater and Maria Suffolk, who met

Karen Dethell
karen.dethell@archant.co.uk

at Sheringham Primary School, teamed up with Harry Leggett and Laura Mills as teenagers.

The four became inseparable. Harry, Laura and Maria went on to have nine children between them but, when Kate, 32, gave birth to daughter

Lola five years ago, she started suffering headaches, slurred speech and exhaustion.

She was devastated when tests revealed that not only had she suffered a mini stroke, thought to have been caused by pre-eclampsia - a condition causing high blood

» Continued on page 20

Best friends Harry Leggett, Kate Bywater, Laura Mills and Maria Suffolk.
Picture: KAREN DETHELL

Intricately designed beautifully built

10% V3 OFF EVERYTHING - LIFETIME GUARANTEE. Need we say more!

0% interest over TWO YEARS on all orders placed in November. Call 01603 754752 for more information or a FREE no obligation quotation.

We are a family run business established over 20 years.

Amber

AMBER HOME INVESTMENTS

Make your home an Amber Home
Telephone: 8000 1219 131

CALL NOW for more information or a FREE no obligation quotation or visit our site at SHINGHAM CENTRE, Amber Home Investments, Eastern Way, Sheringham, Norfolk, NR21 4AR or 01603 754752

CLIFTONVILLE HOTEL

Book on line at
www.cliftonvillehotel.co.uk
reservations@cliftonvillehotel.co.uk
01263 512543

CHRISTMAS PARTY NIGHTS

CHRISTMAS DAY LUNCHEON

NEW YEAR'S EVE GALA DINNER DANCE

BOOKING NOW

CALL IN AND PICK UP A MENU OR WE CAN EMAIL MENUS AND DETAILS

www.norfolknews.co.uk Thursday, October 27, 2016

NEWS

AWARDS



Duncan Baker, Mayor of Holt, with the Anglia in Bloom Environmental Quality award.
Picture: NICK BUTCHER

Blooming good effort by community

Community chiefs in Holt are blooming thrilled that their town scooped two awards in the Anglia in Bloom competition.

Holt has not entered the annual contest for several years and was delighted to come away with the Environmental Quality award, and a high silver

in the Small Towns' category.

Town council clerk Elaine Oliver said the judges' tour had included the Spouts, the primary school, High Street, and the churchyard.

They had been impressed at how the Spout Hills area of

common land had been turned into an attractive environment with a restored pond and walks.

The whole community had been involved with the In Bloom project which had included a community planting evening and a team of volunteer waterers.

Fines after electric shock farm accident

Emma Knights/Peter Walsh
newsdesk@archant.co.uk

"Their failings have destroyed my life."

These are the words of a man who sustained life-changing injuries when he suffered a massive electric shock while at work on farmland in Felmingham.

Jon Howes was speaking immediately after a court case in which two Norfolk companies were together fined more than £214,000 after admitting health and safety failings following an incident on April 26, 2014.

Mr Howes, of The Street, Old Costessey, suffered the electric shock after the drilling rig he was working on came into contact with a power line that was carrying a load of 11,000 volts of electricity

sentenced after having previously admitted health and safety breaches.

Recorder Douglas Herbert ordered LF Papworth to pay a fine of £134,000 and costs of £8,491.45 and TW Page and Son to pay a fine of £80,400 and costs of £8,966.05.

Earlier Eleanor Sanderson, prosecuting on behalf of the Health and Safety Executive (HSE), said: "There was an investigation by the HSE that revealed there was not a safe system of work at the site."

Mr Howes spent six months in hospital, has had to have extensive skin grafting and two of his toes amputated and is suffering continuing health problems.

The court heard both companies were devastated by what had happened and had taken remedial action following the accident.

Mr Howes was speaking immediately after a court case in which two Norfolk companies were together fined more than £214,000 after admitting health and safety failings following an incident on April 26, 2014.

Mr Howes, of The Street, Old Costessey, suffered the electric shock after the drilling rig he was working on came into contact with a power line that was carrying a load of 11,000 volts of electricity

Picture: DENISE BRADLEY

Hornsea 3 Offshore Wind Farm

Hornsea Project

DONG energy

Three Offshore Wind Farm

The first Hornsea Project Three Offshore Wind Farm community newsletter is now available.

For further information about the Project, and to download your copy of the newsletter, please visit our website:
www.dongenergy.co.uk/hornseaproject3

If you have any questions or comments about the Project, you can:

- Call the Freephone information line: 0800 0288 466
- Send us an email: contact@hornsea-project-three.co.uk
- Visit us at one of our Community Consultation Events:

Monday 31st October 2016 3pm - 7pm	Sheringham Community Centre, Holway Road, Sheringham, NR26 8NP
Wednesday 2nd November 2016 3pm - 7pm	Aylsham Town Council, Town Hall, Market Place, Aylsham, Norfolk, NR11 6EL
Thursday 3rd November 2016 3pm - 7pm	The Green Britain Centre, Turbine Way, Swaffham, PE37 7HT
Monday 7th November 2016 3pm - 7pm	Great Yarmouth Town Hall, Hall Plain, Great Yarmouth, NR30 2QF
Tuesday 8th November 2016 2pm - 5.30pm	Harford Community Centre, Harford Park, Peterkin Road, Norwich, NR4 6LQ
Wednesday 9th November 2016 2pm - 6.30pm	Blackfriars' Hall, St Andrews St, Norwich, NR3 1AU

FAKENHAM GARDEN CENTRE

WINTER GARDENING... PREPARE YOUR GARDEN FOR THIS WINTER

COFFEE & CAKES | PETS & AQUATICS | FESTIVE FOOD | AUTUMN GARDENING

LOOKING FOR THE PERFECT GIFT? ONE OF OUR GIFT CARDS WOULD BE IDEAL.

JOIN OUR FREE REWARD CLUB

www.fakenhamgardencentre.co.uk
T: 01328 863380 | E: enquiries@fakenhamgardencentre.co.uk
Fakenham Garden Centre, Mill Road, Hempton, Fakenham, Norfolk NR21 7LH

FIND US ON FACEBOOK

Attleborough Mercury

ARCHANT Thursday, October 27, 2016 www.wam24.co.uk 80p where sold

Pilgrimage covered 1,240 miles
» See P8

Joy as school work starts
» See P11

Legion's standard to fly for Queen

Stuart Anderson
stuart.anderson@archant.co.uk

The standard representing Attleborough's armed forces veterans will stand tall on the stage of London's Royal Albert Hall.

The blue-and-yellow flag will be one of three from East Anglian branches of the Royal British Legion taking part in the year's Festival of Remembrance on November 12.

The branch's standard bearer, Michael Edwards, from Attleborough, will have the honour of marching with the flag on stage in front of an audience including the Queen.

Mr Edwards, a former Royal Air Force aircraft engineer, said: "This is quite an honour, and it's a rare opportunity to go and be a part of the Festival of Remembrance."

"It's also quite nice for us because our standard was kept in Norwich for a long time and we've only recently got it back."

Mr Edwards, 40, joined the branch 18 months ago and took on



Michael Edwards, inset, and marching at last year's Remembrance Day in Attleborough. Picture: SONYA DUNCAN

the role of standard bearer as a way of getting involved in the group. He was in the RAF for 12 years, serving in Afghanistan and Iraq, and spent many years based at RAF Marham.

For part of his career, Mr Edwards maintained English

Electric Canberras. He said: "I spent four years working on these and they took me to the Middle East."

Are you organising a Remembrance Day event? Email stuart.anderson@archant.co.uk



Top Marks for The Boars!
THE BOARS
Look out for our story inside

Wymondham Garden Centre
Come and visit our fantastic Christmas department today!

FOUR SEASONS COFFEE SHOP
serving delicious home made cakes and lunches

Halloween Spooktacular
Meaning, grinning, ghosts and ghouls, light up pumpkins, witches brooms, fake blood and lots more scary bits and bobs!

Tuttles Lane, Wymondham NR18 0EP
01953 600282
www.wymondhamgardencentre.co.uk
Open Mon-Sat 9.00-5.00, Sun 10.00-4.00
LOCAL DELIVERY SERVICE

Shapla Tandoori Restaurant
30th Anniversary Celebration

Special Offer: HALF PRICE ON ALL MAIN COURSES

Available: Sunday 30th November, Monday 31st November, Wednesday 13th November, Thursday 14th November

The Red Lion
The Red Lion, East Church Street, Keatinghall, Norfolk, NR16 2EP
Telephone: 01953 887849
Mon-Thurs 12-11pm, 5.30-11pm | Fri & Sat 12-11pm, Sun 12-11pm

SUNDAY 30TH OCTOBER FROM 4PM
Halloween Party with music from the The Signs and fancy dress optional!!!
Regular jam session, quiz night and open mic continue monthly.
Plus 12TH NOVEMBER is Bubble Dogs which is ladies night with prosecco and hot dogs!
19TH NOVEMBER Felix Simpson is here!

Traditional Village Pub
Good Food
Real Ales
Friendly Faces

Car parking changes are approved for two towns

Anthony Carroll
anthony.carroll@archant.co.uk

A car parking fee and time shake up is heading to south Norfolk after council leaders agreed to make changes to help boost town's economies.

South Norfolk Council's cabinet has approved an off-street car parking proposals report looking at all the authority's public car parks in Wymondham and Diss to encourage drivers to use under-utilised edge of town parking sites to ease the problem of busy or full town centre car parks.



It will create short stay shoppers car parks, with a maximum of four hours, and long stay car parks with people paying £4 to park all day, an increase of a £1.

All day car parks at Market Street and Back Lane in Wymondham and Chapel Street Upper and Lower Weaver's Court and Mount Street in Diss will be converted to short stay shoppers and resident permit holder car parks.

The maximum time allowed would be four hours, with fees increasing to £5 to park for three to four hours.

A Diss car park set for the changes.

The other council car parks would be long stay and non-residents permit only with all day parking costing £4, a £1 increase.

A 30 space new car park will also be created in Ayton Road in Wymondham.

There will be an annual season ticket increase from £240 to £260 and the car park in Cemetery Lane in Wymondham will gain long stay status.

The changes will lead to a £67,388 surplus for the council, which will be used to fund the changes.

The proposals paper said the sometime non-existent car parking available in the town centres "impacts on shopper footfall and therefore the vitality of the town centres we are working to support".

Harleston and Loddon will not be affected by car parking charges in the 2016/17 period at least and Long Stratton will not change due to an agreement with Co-op for parking.

Nikon
I SEE SWEET DREAMS
through Nikon Spectacle Lenses

Cecil Amey
Looking Good!

NORWICH
ATTLEBOROUGH
DEREHAM
HALESWORTH
HARLESTON
WATTON
WROXHAM
WYMONDHAM
CECILAMEY.CO.UK

FREE UPGRADE ON NIKON VARIFOCAL LENSES*

Hornsea 3 Offshore Wind Farm
Hornsea Project Three Offshore Wind Farm
DONG energy

The first Hornsea Project Three Offshore Wind Farm community newsletter is now available.

For further information about the Project, and to download your copy of the newsletter, please visit our website: www.dongenergy.co.uk/hornseaproject3

If you have any questions or comments about the Project, you can:

- Call the Freephone information line: 0800 0288 466
- Send us an email: contact@hornsea-project-three.co.uk
- Visit us at one of our Community Consultation Events:

Monday 31st October 2016 3pm - 7pm	Sheringham Community Centre, Holway Road, Sheringham, NR26 8NP
Wednesday 2nd November 2016 3pm - 7pm	Aylsham Town Council, Town Hall, Market Place, Aylsham, Norfolk, NR11 6EL
Thursday 3rd November 2016 3pm - 7pm	The Green Brake Centre, Turbine Way, Swaffham, PE37 7HT
Monday 7th November 2016 3pm - 7pm	Great Yarmouth Town Hall, Hall Plain, Great Yarmouth, NR30 2QF
Tuesday 8th November 2016 2pm - 5:30pm	Harford Community Centre, Harford Park, Peterkin Road, Norwich, NR4 6LQ
Wednesday 9th November 2016 2pm - 6:30pm	Blackfriars Hall, St Andrews St, Norwich, NR3 1AU

Discover more by coach this Christmas

Enjoy festive days out and spectacular live events with convenient local pick up points.

Ideal Home Show at Christmas - 24 November £45pp
Bury Christmas Market - various dates £17pp
Hyde Park Winter Wonderland - various dates £25pp
Bruges Christmas Market - 8 December £58pp

From **£17** per person

Galloway
travel-galloway.com

3 Castle Meadow
Norwich NR1 3PY
Tel: 01603 679010

¹ The advert for the Diss and Wymondham Mercury were identical to the Attleborough Mercury, although the coverage area varies. For this Report only one copy of the advert is provided.

Hornsea Project Three
Offshore Wind Farm



**Hornsea Project Three
Offshore Wind Farm**

Consultation Report: Annex 11
Section 5 – Phase 1 Feedback Form

Date: May 2018

Hornsea 3
Offshore Wind Farm

Orsted

Hornsea Project Three Offshore Wind Farm



Name

Title

Date

Organisation (if applicable)

Address

Postcode Telephone*

E-mail Address*

Would you like to receive regular newsletters to keep up to date with the progress of the Hornsea Project Three Offshore Wind Farm? (Tick all that apply)

Yes, via e-mail (please provide e-mail above)
 Yes, via post (please provide address above)
 No, thanks

Which of the following do you consider the best way to generate electricity?

Wind
 Coal
 Nuclear
 Biomass
 Hydro
 Gas
 Solar
 Wave
 Oil

Please tell us what you feel is the most important issue that we should be aware of whilst developing our proposals for this offshore wind farm:

If you have any other comments about the proposed offshore wind farm, the consultation event or the people you spoke to today please use the box below:

*This information is for the purpose of consultation only and will not be passed onto any third parties.

Please continue overleaf

For each of the following statements please tell us whether you agree or disagree with them.

	Strongly disagree	Disagree	Don't know	Agree	Strongly agree
1) Climate change is an important issue					
2) I support renewable energy					
3) I believe that offshore wind should be a significant source of renewable energy					
4) I prefer wind farms to be placed out at sea rather than on land					
5) I support offshore wind power in the North Sea					
6) Offshore wind farms will encourage visitors to the area					
7) Offshore wind farms have created jobs and supported local businesses in the area					
8) Today's event helped me understand the proposed plans for the wind farm development					
9) All my questions were answered properly					
10) I have, or know how to get, all the information I need to understand how the proposed offshore wind farm may impact upon me					
11) I am able to easily express my views on the proposed wind farm development					
12) My views will be taken into account as the proposed wind farm project is being developed					
13) The finalised wind farm proposal will reflect my views and opinions and those of my local community					
14) I support Hornsea Project Three Offshore Wind Farm					

This event has given me all of the information I feel I need in order to comment on the proposed offshore wind farm:

Agree
 Disagree

Finally, please let us know roughly how long you spent at the event today:

Up to 15 minutes
 Up to 30 minutes
 Up to 45 minutes
 Up to an hour
 Over an hour

Thank you for taking the time to complete this questionnaire, your input is very important to us.

All feedback on Phase One Consultation must be submitted by 28th November 2016. After this deadline, a short Consultation Summary Report will be produced, which will summarise all of the feedback received at the Phase One Consultation Events. This will be available on our website www.dongenergy.co.uk/hornseaproject3 and you will be notified via email.