



**SCOTTISHPOWER  
RENEWABLES**

# **East Anglia ONE North and East Anglia TWO Offshore Windfarms**

## **Applicants' Responses to Examining Authority's Written Questions**

### **Appendix 14 Junction Locations**

Applicants: East Anglia ONE North Limited and East Anglia TWO Limited

Document Reference: ExA.WQ-1.A14.D1.V1

SPR Reference: EA1N\_EA2-DWF-ENV-REP-IBR-001085\_0014

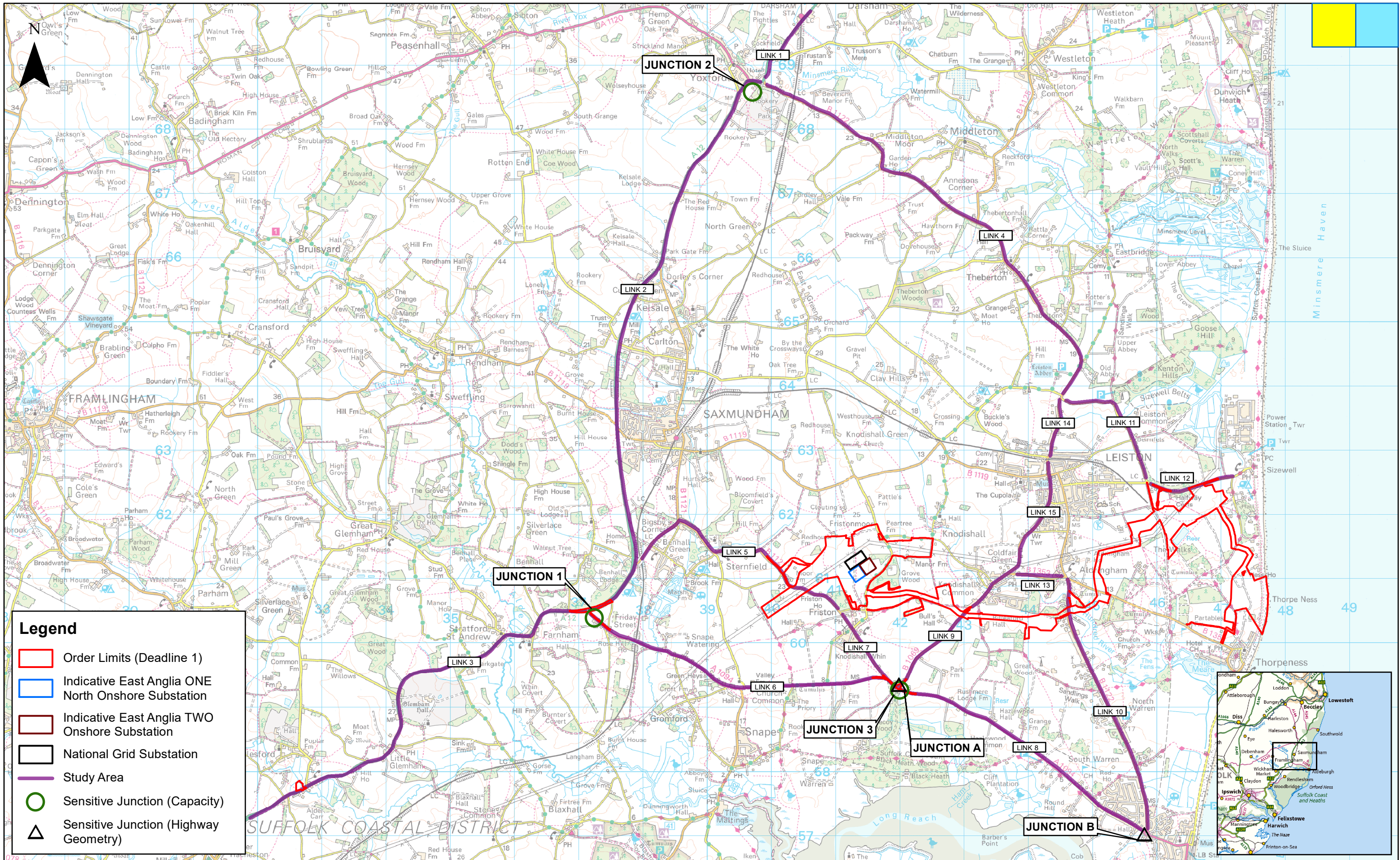
Date: 2<sup>nd</sup> November 2020

Revision: Version 01

Author: Royal HaskoningDHV

**Applicable to East Anglia ONE North and East Anglia TWO**





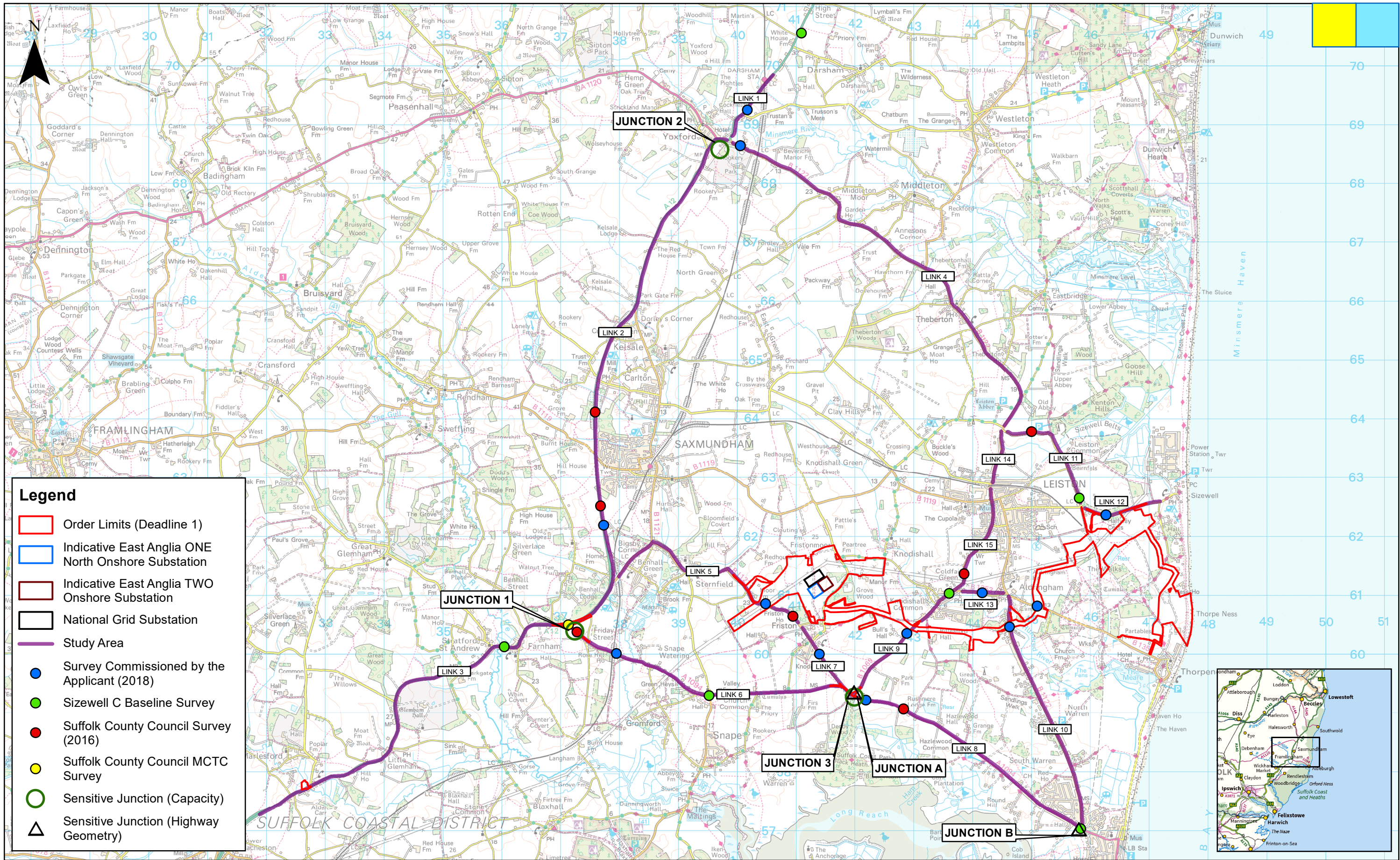
1	01/11/2020	AB	First Issue.	Prepared:	AB
Rev	Date	By	Comment	Checked:	FM
				Approved:	PP

1:55,000	Scale @ A3
Source: © Crown copyright and database rights 2020. Ordnance Survey 0100031673.	
This map has been produced to the latest known information at the time of issue, and has been produced for your information only. Please consult with the SPR Onshore GIS team to ensure the content is still current before using the information contained on this map. To the fullest extent permitted by law, we accept no responsibility or liability (whether in contract, tort (including negligence) or otherwise in respect of any errors or omissions in the information contained in the map and shall not be liable for any loss, damage or expense caused by such errors or omissions.	

## East Anglia ONE North and East Anglia TWO Onshore Highway Study Area

Drg No	EA1N-EA2-DEV-DRG-IBR-001225	Coordinate System:	BNG
Rev	1	Datum:	OSGB36
Date	01/11/20		
Figure	26.1		





1	01/11/2020	AB	First Issue.	Prepared:	AB
Rev	Date	By	Comment	Checked:	FM
				Approved:	PP

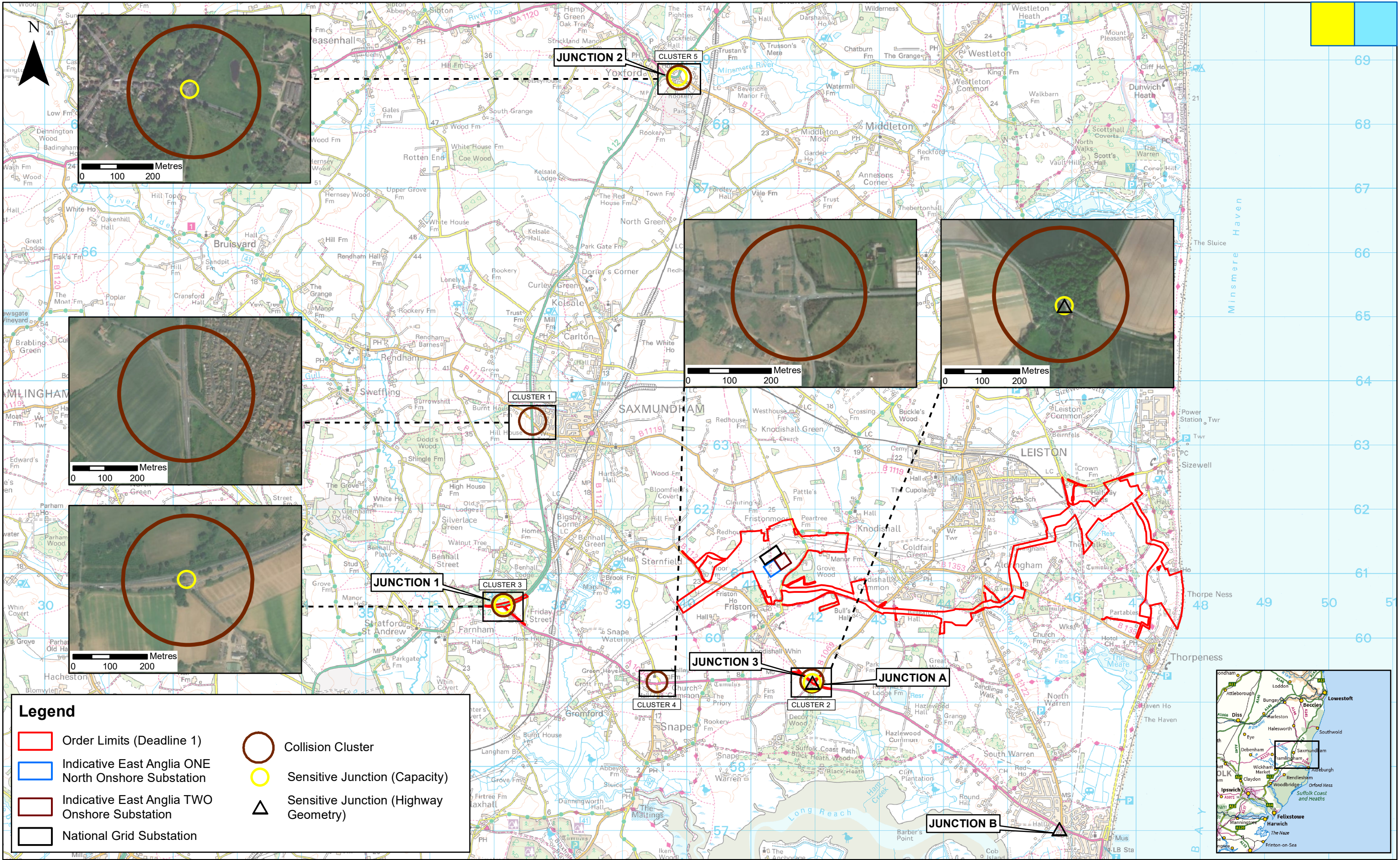
1:60,000	Scale @ A3
Source: © Suffolk County Council, 2016 and 2018. © Crown copyright and database rights 2020. Ordnance Survey 0100031673.	
This map has been produced to the latest known information at the time of issue, and has been produced for your information only. Please consult with the SPR Onshore GIS team to ensure the content is still current before using the information contained on this map.	
To the fullest extent permitted by law, we accept no responsibility or liability (whether in contract, tort (including negligence) or otherwise in respect of any errors or omissions in the information contained in the map and shall not be liable for any loss, damage or expense caused by such errors or omissions.	



## East Anglia ONE North and East Anglia TWO

### Traffic Count Survey Locations

Drg No	EA1N-EA2-DEV-DRG-IBR-001226	
Rev	1	Coordinate System: BNG
Date	01/11/20	Datum: OSGB36
Figure	26.4	





 <b>SCOTTISHPOWER RENEWABLES</b>							1:55,000		<b>East Anglia ONE North and East Anglia TWO</b>  <b>Collision Cluster Locations</b>	<b>Drg No</b>	EA1N-EA2-DEV-DRG-IBR-001227		
					Prepared:	AB					<b>Rev</b>	1	<b>Coordinate System:</b> BNG <b>Datum:</b> OSGB36
	1	01/11/2020	AB	First Issue.	Checked:	FM	<small>Source: © Crown copyright and database rights 2020. Ordnance Survey 0100031673. Service Layer Credits: Source: Esri, DigitalGlobe, GeoEye, Earthstar Geographics, CNES/Airbus D.S., USDA, AeroGRID, IGN, and the GIS User Community, 2019.</small>			<b>Date</b>	01/11/20		
	<b>Rev</b>	<b>Date</b>	<b>By</b>	<b>Comment</b>	<b>Approved:</b>	PP	<small>This map has been produced to the latest known information at the time of issue, and has been produced for your information only. Please consult with the SPR Onshore GIS team to ensure the content is still current before using the information contained on this map. To the fullest extent permitted by law, we accept no responsibility or liability (whether in contract, tort (including negligence) or otherwise in respect of any errors or omissions in the information contained in the map and shall not be liable for any loss, damage or expense caused by such errors or omissions.</small>			<b>Figure</b>	26.6		