



SCOTTISHPOWER  
RENEWABLES



# East Anglia ONE North Offshore Windfarm

## Applicants' Responses to Examining Authority's Written Questions

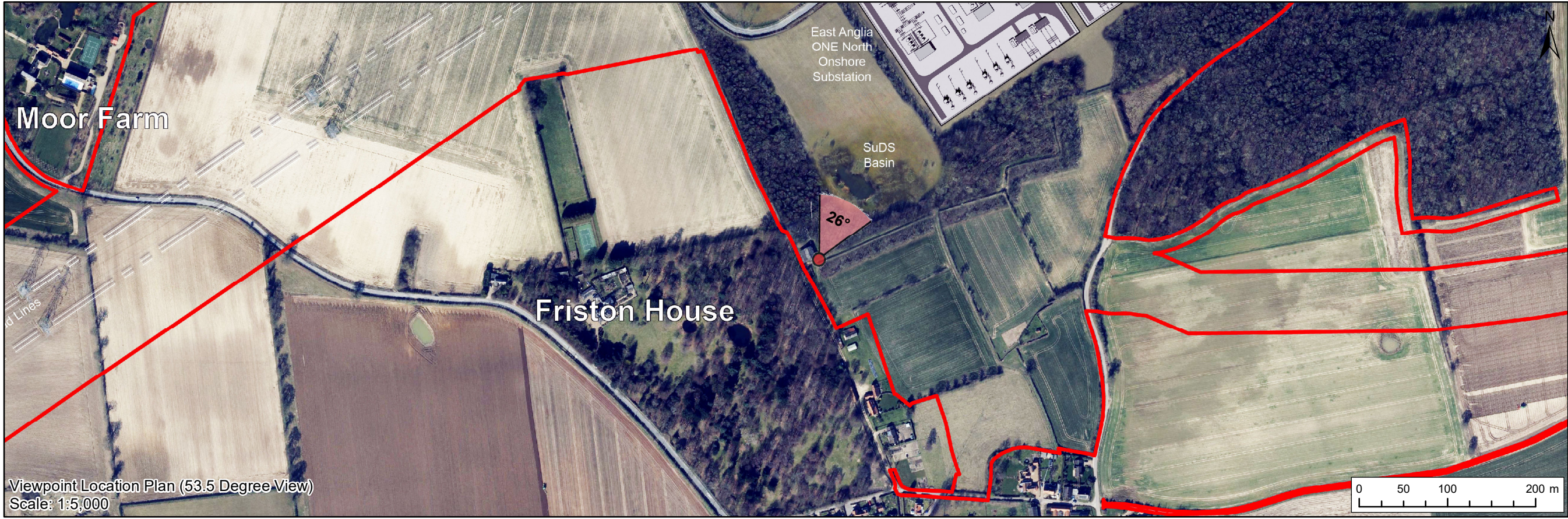
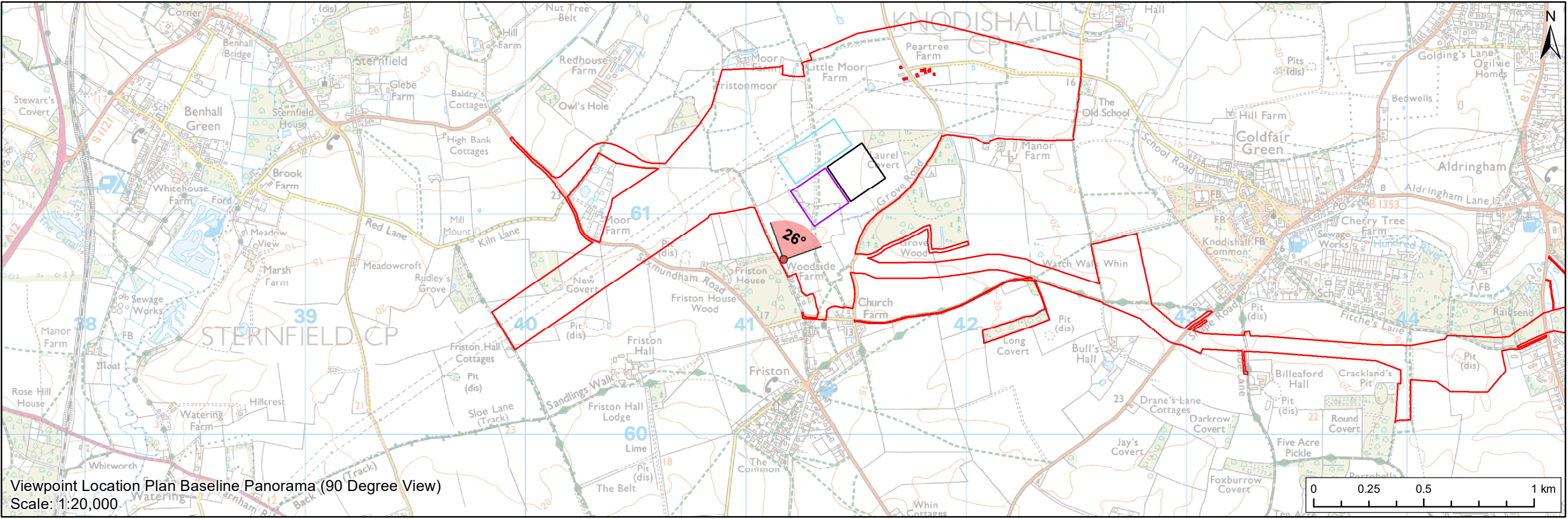
### Appendix 9.1 EA1N Annotated Viewpoint 1

Applicants: East Anglia ONE North Limited  
Document Reference: ExA.WQ-1.A9.D1.V1  
SPR Reference: EA1N\_EA2-DWF-ENV-REP-IBR-001085\_009

Date: 2<sup>nd</sup> November 2020  
Revision: Version 01  
Author: Royal HaskoningDHV

**Applicable to East Anglia ONE North**





**Legend**

- Proposed Onshore Development Area
- Indicative East Anglia ONE North Substation Location
- Indicative East Anglia TWO Substation Location
- Indicative National Grid AIS Substation Location

**Viewpoint:**

- 90 Degree Field of View Viewpoint
- 53.5 Degree Field of View Viewpoint



 <div>SCOTTISHPOWER RENEWABLES</div>								<div>East Anglia ONE North with National Grid AIS Substation</div> <div>Viewpoint 1: Public Right of Way near Friston House</div>	Drg No		EA1N-DWF-ENV-REP-IBR-000366	
	2	29/08/2019	LA	Second Issue (OPEN)	Prepared:	LA	Scale @ A3		Rev	2	Coordinate System: BNG Datum: OSGB36	
	1	02/08/2019	LA	First Issue (OPEN)	Checked:	SM			Date	29/08/19		
	Rev	Date	By	Comment	Approved:	LT			Figure	29.13a		
	<div>Source: © Crown copyright and database rights 2019. Ordnance Survey 0100031673.</div> <div>This map has been produced to the latest known information at the time of issue, and has been produced for your information only. Please consult with the DNSi Ordnance OSi team to ensure the content is still current before using the information contained in this map. The latest edition permitted by law, we accept no responsibility for liability, whether in contract, tort (including negligence) or otherwise, in respect of any errors or omissions in the information contained in this map and shall not be liable for any loss, damage or expense caused by such errors or omissions.</div>											





**Visual representation of 1st year of operational phase**  
Photomontage of the proposed East Anglia ONE North and National Grid AIS Substation

View flat at a comfortable arm's length





**Visual representation of 15th year of operational phase**  
Photomontage of the proposed East Anglia ONE North and National Grid AIS Substation

View flat at a comfortable arm's length

<b>OS reference:</b>	641169 E 260794 N	<b>Horizontal field of view:</b>	53.5° (planar projection)	<b>Camera:</b>	Canon EOS 5D Mark II	<small>Contains Ordnance Survey digital data © Crown copyright, All rights reserved 2019 Licence number 0100031673</small>
<b>Eye level:</b>	14 m AOD	<b>Principal viewing distance:</b>	812.5 mm	<b>Lens:</b>	50mm (Canon EF 50mm f/1.4)	
<b>Direction of view:</b>	26°	<b>Paper size:</b>	841 x 297 mm (half A1)	<b>Camera height:</b>	1.5 m AGL	
		<b>Correct printed image size:</b>	820 x 260 mm	<b>Date and time:</b>	22/02/2019, 14:24:44	

**Figure: 29.13c**  
**Viewpoint 1: Public Right of Way near Friston House**





**Visual representation of 1st year of operational phase**  
Photomontage of the proposed East Anglia ONE North, East Anglia TWO and National Grid AIS Substation

View flat at a comfortable arm's length

OS reference:	641169 E 260794 N	Horizontal field of view:	53.5° (planar projection)	Camera:	Canon EOS 5D Mark II
Eye level:	14 m AOD	Principal viewing distance:	812.5 mm	Lens:	50mm (Canon EF 50mm f/1.4)
Direction of view:	26°	Paper size:	841 x 297 mm (half A1)	Camera height:	1.5 m AGL
		Correct printed image size:	820 x 260 mm	Date and time:	22/02/2019, 14:24:44

Contains Ordnance Survey digital data © Crown copyright, All rights reserved 2019 Licence number 0100031673

**Figure: 29.13d**  
**Viewpoint 1: Public Right of Way near Friston House**





**Visual representation of 15th year of operational phase**  
Photomontage of the proposed East Anglia ONE North, East Anglia TWO and National Grid AIS Substation

View flat at a comfortable arm's length

<b>OS reference:</b>	641169 E 260794 N	<b>Horizontal field of view:</b>	53.5° (planar projection)	<b>Camera:</b>	Canon EOS 5D Mark II	<small>Contains Ordnance Survey digital data © Crown copyright, All rights reserved 2019 Licence number 0100031673</small>
<b>Eye level:</b>	14 m AOD	<b>Principal viewing distance:</b>	812.5 mm	<b>Lens:</b>	50mm (Canon EF 50mm f/1.4)	
<b>Direction of view:</b>	26°	<b>Paper size:</b>	841 x 297 mm (half A1)	<b>Camera height:</b>	1.5 m AGL	
		<b>Correct printed image size:</b>	820 x 260 mm	<b>Date and time:</b>	22/02/2019, 14:24:44	

**Figure: 29.13e**  
**Viewpoint 1: Public Right of Way near Friston House**