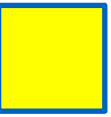




SCOTTISHPOWER  
RENEWABLES



# East Anglia ONE North Offshore Windfarm

## Applicants' Responses to Examining Authority's Written Questions

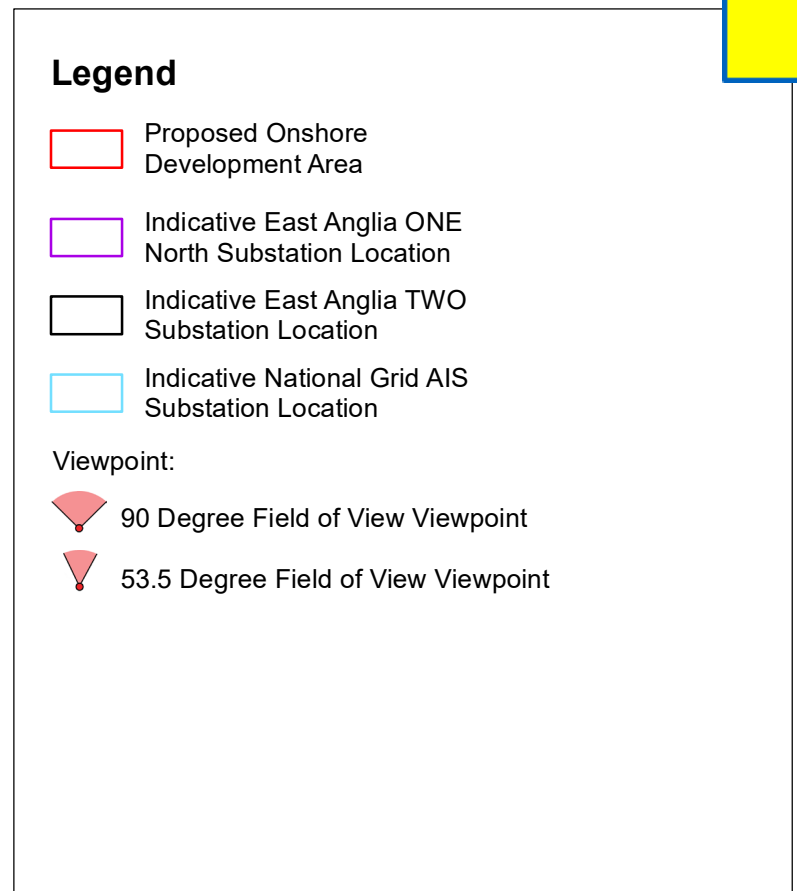
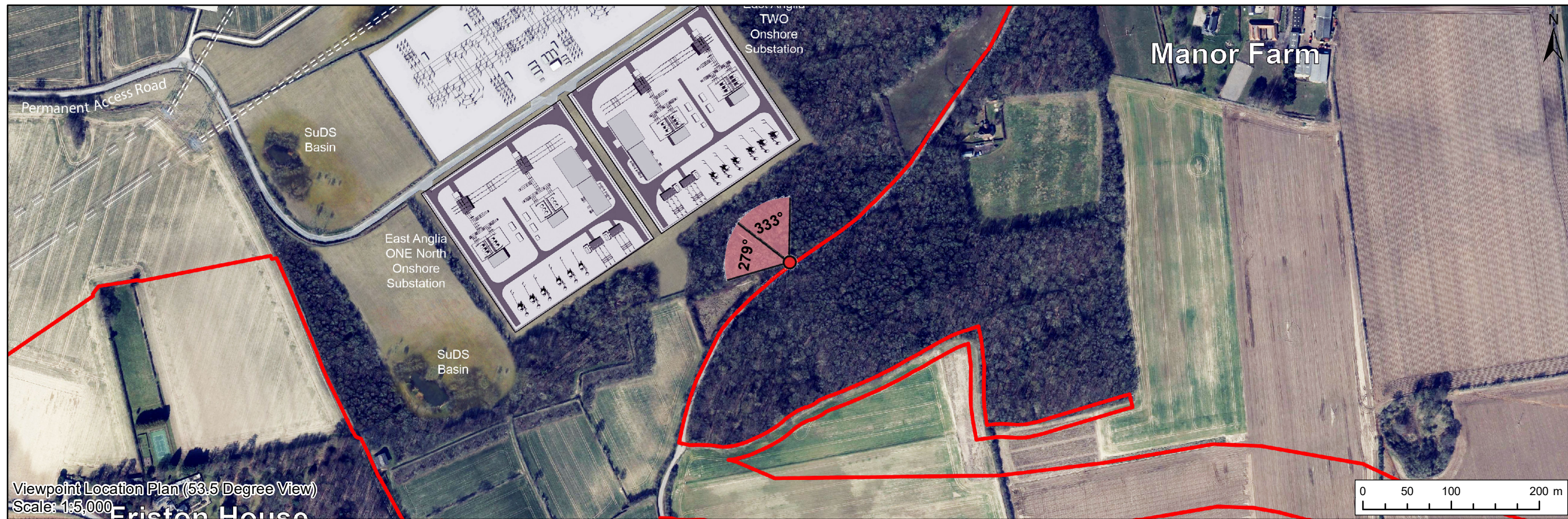
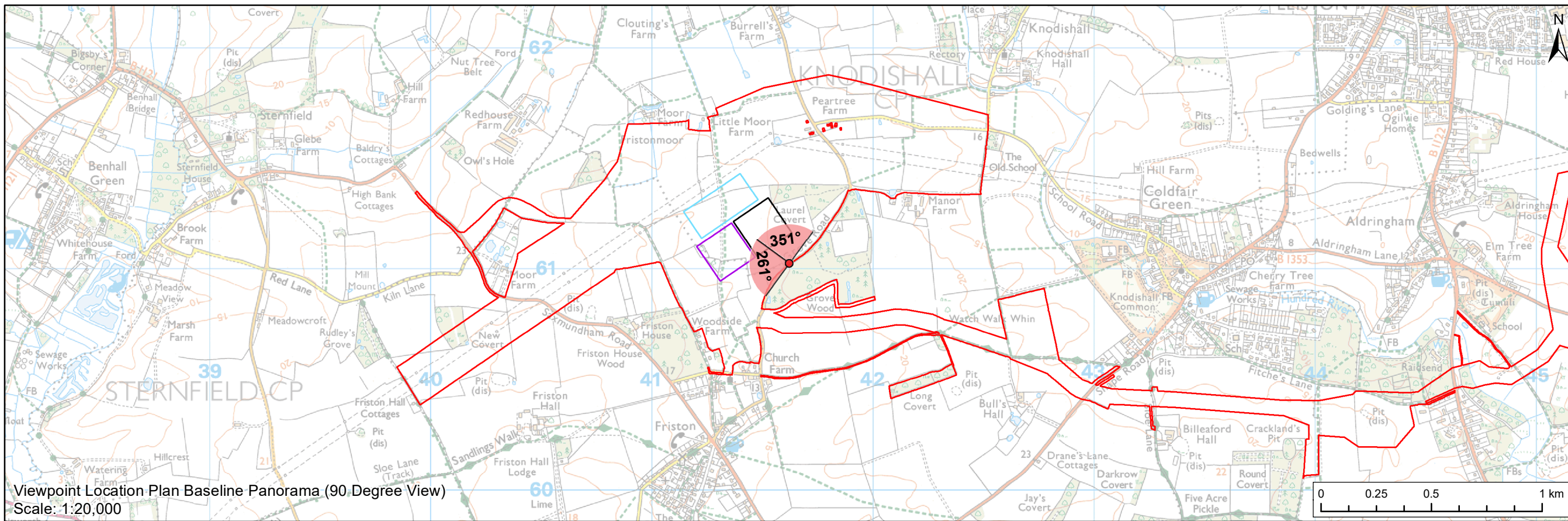
### Appendix 9.6 EA1N Annotated Viewpoint 14

Applicants: East Anglia ONE North Limited  
Document Reference: ExA.WQ-1.A9.D1.V1  
SPR Reference: EA1N\_EA2-DWF-ENV-REP-IBR-001085\_009

Date: 2<sup>nd</sup> November 2020  
Revision: Version 01  
Author: Royal HaskoningDHV

**Applicable to East Anglia ONE North**





2	29/08/2019	LA	Second Issue (OPEN)	Prepared:	LA	Scale @ A3
1	02/08/2019	LA	First Issue (OPEN)	Checked:	SM	<p>This map has been produced to the best of our knowledge and belief from the information available to us at the time of production. It is not intended to be used for navigation or other purposes where accuracy is essential. The user must verify the accuracy of the information contained in this map for their own use. The user must also verify the accuracy of the information contained in this map for their own use.</p>
<b>Rev</b>	<b>Date</b>	<b>By</b>	<b>Comment</b>	<b>Approved:</b>	<b>LT</b>	

Source: © Crown copyright and database rights 2019. Ordnance Survey 0100031673.

## East Anglia ONE North with National Grid AIS Substation

Viewpoint 14: Grove Road

<b>Drq No</b>	EA1N-DWF-ENV-REP-IBR-000366	
<b>Rev</b>	2	Coordinate System: BNG Datum: OSGB36
<b>Date</b>	29/08/19	
<b>Figure</b>	29.26a	





Baseline Photograph (90 Degree Field of View)



2	29/08/2019	LA	Second Issue (OPEN)	Prepared:	LA
1	02/08/2019	LA	First Issue (OPEN)	Checked:	SM
Rev	Date	By	Comment	Approved:	LT

Source: © Crown copyright and database rights 2019. Ordnance Survey 0100018072.  
This map has been produced to the latest known information at the time of issue, and has been produced for your information only.  
Please consult with the SPN Onshore GIS team to ensure the content is still current before using the information contained on this map.  
To the fullest extent permitted by law, we accept no responsibility or liability, whether in contract, tort (including negligence) or otherwise in respect of any errors or omissions in the information contained in the map and shall not be liable for any loss, damage or expense caused by such errors or omissions.

<b>East Anglia ONE North with National Grid AIS Substation</b>  Viewpoint 14: Grove Road			<b>Drg No</b>	EA1N-DWF-ENV-REP-IBR-000366	
			<b>Rev</b>	2	Coordinate System: BNG Datum: OSGB36
			<b>Date</b>	29/08/19	
			<b>Figure</b>	29.26a	









**Visual representation of 1st year of operational phase**  
Photomontage of the proposed East Anglia ONE North and National Grid AIS Substation

View flat at a comfortable arm's length

OS reference:	641619 E 261025 N	Horizontal field of view:	53.5° (planar projection)	Camera:	Canon EOS 5D Mark II
Eye level:	22 m AOD	Principal viewing distance:	812.5 mm	Lens:	50mm (Canon EF 50mm f/1.4)
Direction of view:	332.9°	Paper size:	841 x 297 mm (half A1)	Camera height:	1.5 m AGL
		Correct printed image size:	820 x 260 mm	Date and time:	08/04/2019, 13:12:05

Contains Ordnance Survey digital data © Crown copyright, All rights reserved 2019 Licence number 0100031673

**Figure: 29.26b**  
**Viewpoint 14: Grove Road**





**Visual representation of 15th year of operational phase**  
Photomontage of the proposed East Anglia ONE North and National Grid AIS Substation

View flat at a comfortable arm's length

OS reference:	641619 E 261025 N	Horizontal field of view:	53.5° (planar projection)	Camera:	Canon EOS 5D Mark II
Eye level:	22 m AOD	Principal viewing distance:	812.5 mm	Lens:	50mm (Canon EF 50mm f/1.4)
Direction of view:	279.4°	Paper size:	841 x 297 mm (half A1)	Camera height:	1.5 m AGL
		Correct printed image size:	820 x 260 mm	Date and time:	08/04/2019, 13:12:05

Contains Ordnance Survey digital data © Crown copyright, All rights reserved 2019 Licence number 0100031673

**Figure: 29.26c**  
**Viewpoint 14: Grove Road**





**Visual representation of 15th year of operational phase**  
Photomontage of the proposed East Anglia ONE North and National Grid AIS Substation

View flat at a comfortable arm's length

OS reference:	641619 E 261025 N	Horizontal field of view:	53.5° (planar projection)	Camera:	Canon EOS 5D Mark II
Eye level:	22 m AOD	Principal viewing distance:	812.5 mm	Lens:	50mm (Canon EF 50mm f/1.4)
Direction of view:	332.9°	Paper size:	841 x 297 mm (half A1)	Camera height:	1.5 m AGL
		Correct printed image size:	820 x 260 mm	Date and time:	08/04/2019, 13:12:05

Contains Ordnance Survey digital data © Crown copyright, All rights reserved 2019 Licence number 0100031673

**Figure: 29.26c**  
**Viewpoint 14: Grove Road**





**Visual representation of 1st year of operational phase**  
Photomontage of the proposed East Anglia ONE North, East Anglia TWO and National Grid AIS Substation

View flat at a comfortable arm's length









**Visual representation of 15th year of operational phase**  
Photomontage of the proposed East Anglia ONE North, East Anglia TWO and National Grid AIS Substation

View flat at a comfortable arm's length

OS reference:	641619 E 261025 N	Horizontal field of view:	53.5° (planar projection)	Camera:	Canon EOS 5D Mark II
Eye level:	22 m AOD	Principal viewing distance:	812.5 mm	Lens:	50mm (Canon EF 50mm f/1.4)
Direction of view:	279.4°	Paper size:	841 x 297 mm (half A1)	Camera height:	1.5 m AGL
		Correct printed image size:	820 x 260 mm	Date and time:	08/04/2019, 13:12:05

Contains Ordnance Survey digital data © Crown copyright, All rights reserved 2019 Licence number 0100031673

**Figure: 29.26e**  
**Viewpoint 14: Grove Road**





**Visual representation of 15th year of operational phase**  
Photomontage of the proposed East Anglia ONE North, East Anglia TWO and National Grid AIS Substation

View flat at a comfortable arm's length

OS reference:	641619 E 261025 N	Horizontal field of view:	53.5° (planar projection)	Camera:	Canon EOS 5D Mark II
Eye level:	22 m AOD	Principal viewing distance:	812.5 mm	Lens:	50mm (Canon EF 50mm f/1.4)
Direction of view:	332.9°	Paper size:	841 x 297 mm (half A1)	Camera height:	1.5 m AGL
		Correct printed image size:	820 x 260 mm	Date and time:	08/04/2019, 13:12:05

Contains Ordnance Survey digital data © Crown copyright, All rights reserved 2019 Licence number 0100031673

**Figure: 29.26e**  
**Viewpoint 14: Grove Road**