



The Millbrook Power (Gas Fired Power Station) Order

**Plan 31116/2001/008 – Revision B – Submitted for
Deadline 2 – April 2018**

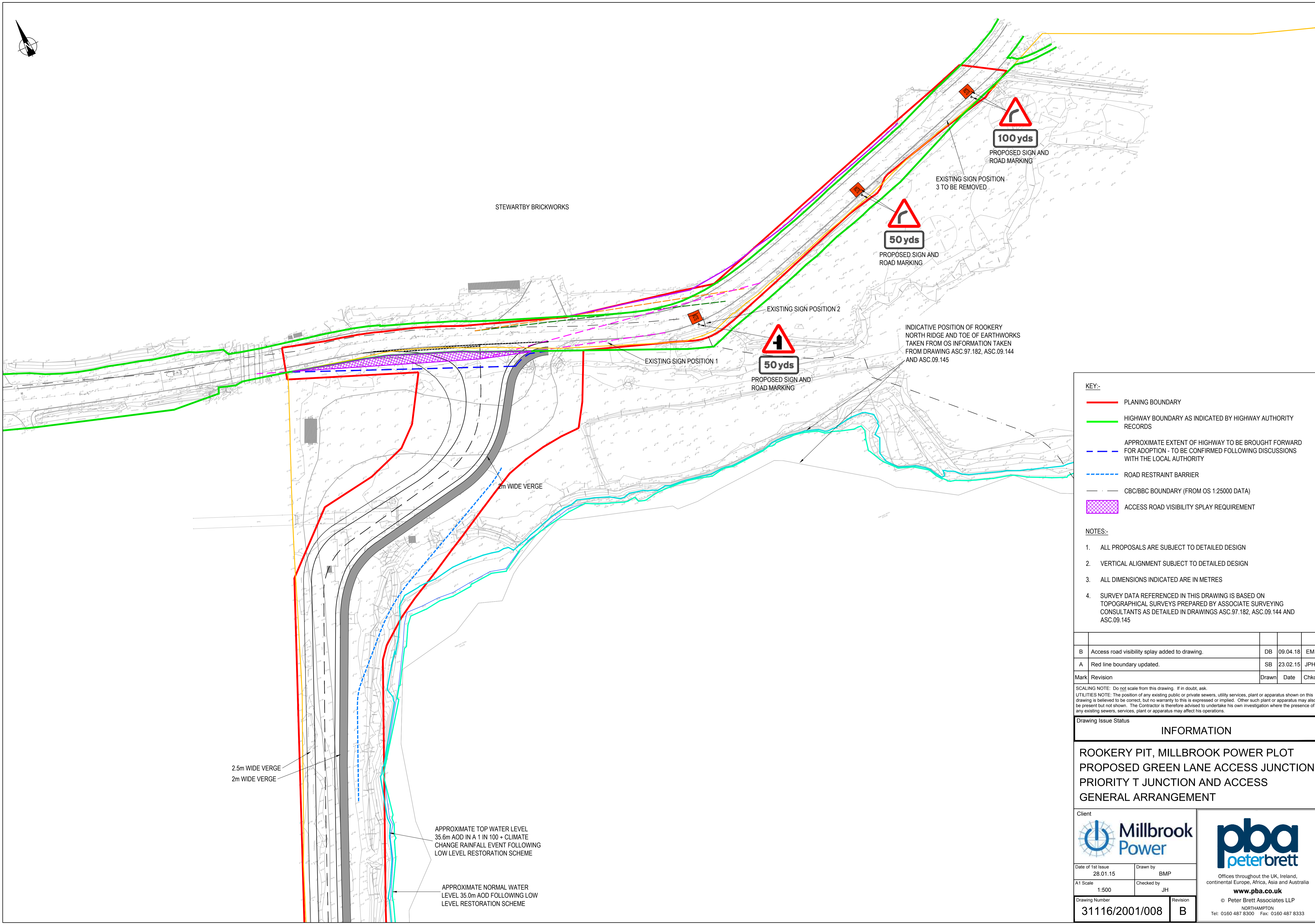
Superseding Plan 31116/2001/008 Revision A – Appendix 2.1 of the Transport Assessment of Volume L Appendix 12.1 of the Environmental Statement submitted in October 2017

**Planning Act 2008
The Infrastructure Planning
(Applications: Prescribed Forms and Procedure) Regulations 2009**

PINS Reference Number: EN010068
Document Reference: 6.2
Regulation Number: Reg. 5(2)(a) & Infrastructure Planning
(Environmental Impact Assessment)
Regulations 2009
Author: Peter Brett Associates LLP

Revision	Date	Description
B	April 2018	Examination Version





KEY:-

- PLANING BOUNDARY
- HIGHWAY BOUNDARY AS INDICATED BY HIGHWAY AUTHORITY RECORDS
- - - APPROXIMATE EXTENT OF HIGHWAY TO BE BROUGHT FORWARD FOR ADOPTION - TO BE CONFIRMED FOLLOWING DISCUSSIONS WITH THE LOCAL AUTHORITY
- - - ROAD RESTRAINT BARRIER
- CBC/BBC BOUNDARY (FROM OS 1:25000 DATA)
- ACCESS ROAD VISIBILITY SPLAY REQUIREMENT

- NOTES:-**
1. ALL PROPOSALS ARE SUBJECT TO DETAILED DESIGN
 2. VERTICAL ALIGNMENT SUBJECT TO DETAILED DESIGN
 3. ALL DIMENSIONS INDICATED ARE IN METRES
 4. SURVEY DATA REFERENCED IN THIS DRAWING IS BASED ON TOPOGRAPHICAL SURVEYS PREPARED BY ASSOCIATE SURVEYING CONSULTANTS AS DETAILED IN DRAWINGS ASC.97.182, ASC.09.144 AND ASC.09.145



Mark	Revision	Drawn	Date	Chkd
B	Access road visibility splay added to drawing.	DB	09.04.18	EM
A	Red line boundary updated.	SB	23.02.15	JPH

SCALING NOTE: Do not scale from this drawing. If in doubt, ask.
 UTILITIES NOTE: The position of any existing public or private sewers, utility services, plant or apparatus shown on this drawing is believed to be correct, but no warranty to this is expressed or implied. Other such plant or apparatus may also be present but not shown. The Contractor is therefore advised to undertake his own investigation where the presence of any existing sewers, services, plant or apparatus may affect his operations.

Drawing Issue Status

INFORMATION

**ROOKERY PIT, MILLBROOK POWER PLOT
 PROPOSED GREEN LANE ACCESS JUNCTION
 PRIORITY T JUNCTION AND ACCESS
 GENERAL ARRANGEMENT**

Client					
Date of 1st Issue	28.01.15	Drawn by	BMP	Offices throughout the UK, Ireland, continental Europe, Africa, Asia and Australia	
A1 Scale	1:500	Checked by	JH	www.pba.co.uk	
Drawing Number	31116/2001/008	Revision	B	© Peter Brett Associates LLP NORTHAMPTON Tel: 0160 487 8300 Fax: 0160 487 8333	