

# Planning Act 2008

The Infrastructure Planning (Applications: Prescribed Forms and Procedure) Regulations 2009

## The Port Talbot Steelworks (Power Generation Enhancement) Order

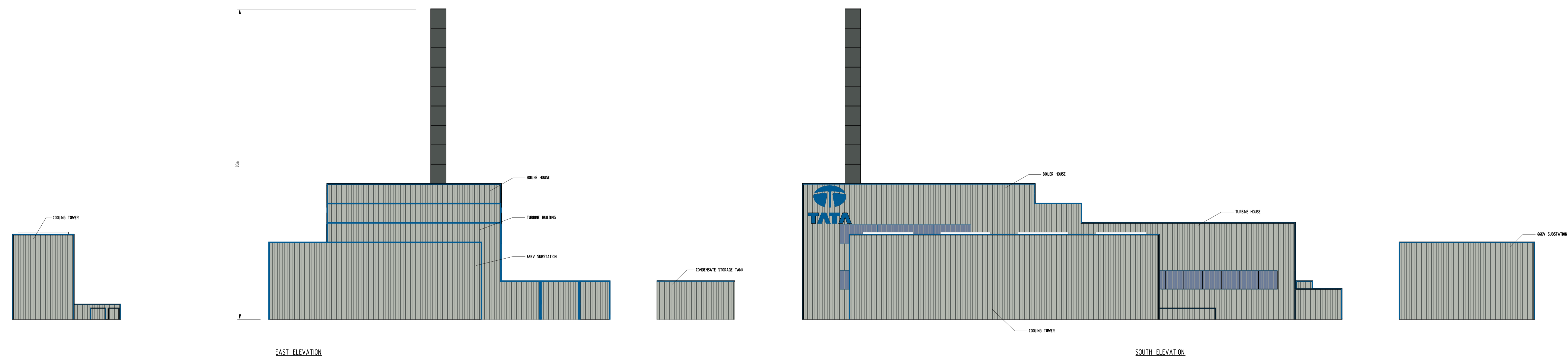
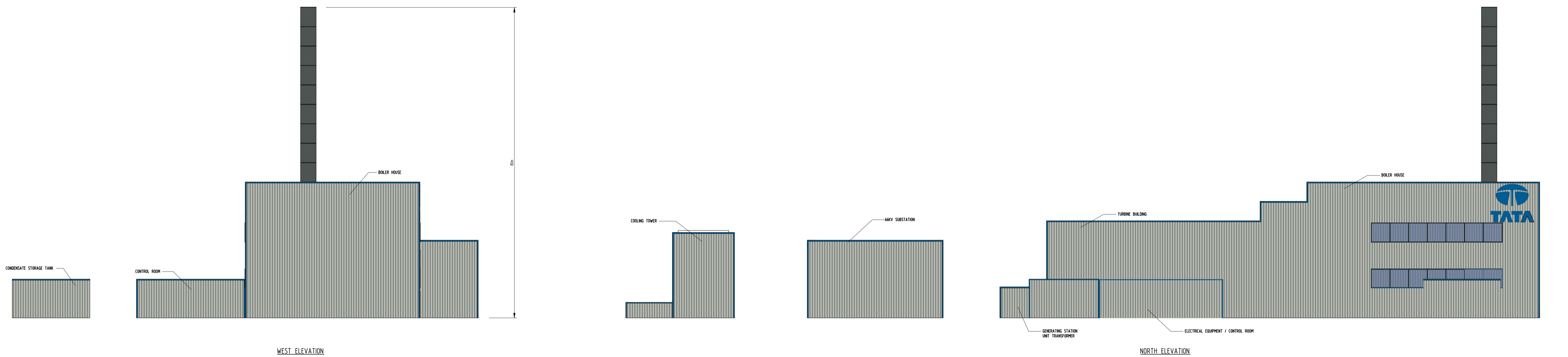
### 2.06 Indicative Elevations, Sections & Floorplans

<b>PINS Reference</b>	EN010062	
<b>Document No.</b>	2.06	
<b>Regulation</b>	5(2)(o)	
<b>Author</b>	AECOM	
<b>Revision</b>	<b>Date</b>	<b>Description</b>
0	July 2014	Submission Version

## 2.06 Indicative Elevations, Sections & Floorplans

### Index to Plans

1	Indicative Elevations – Generating Station
2	Indicative Elevations – Generating Station Phase 1 of Option 2
3	Indicative Sections
4	Indicative Floorplans



**PRELIMINARY**



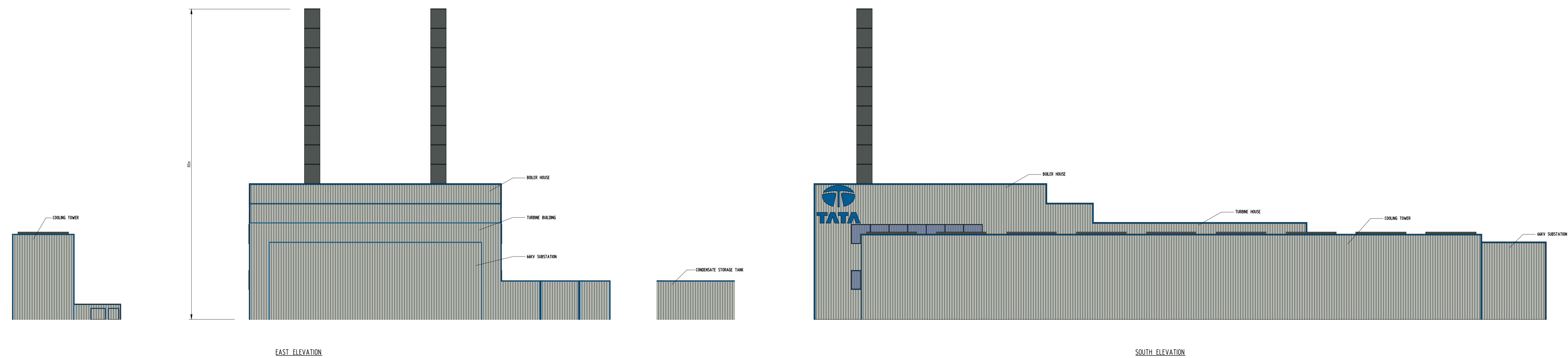
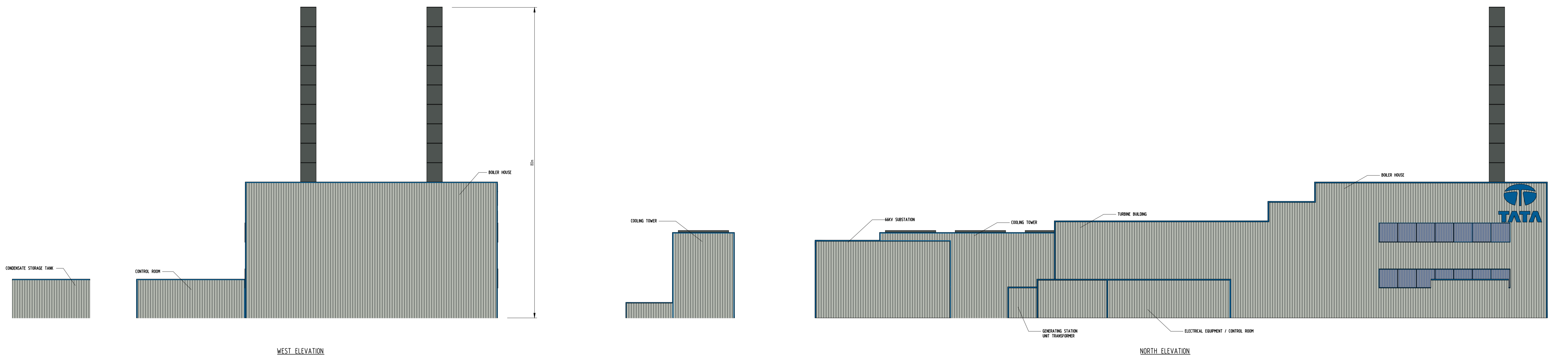
Client: **TATA**  
 Project: THE PORT TALBOT STEELWORKS (POWER GENERATION ENHANCEMENT) ORDER  
 Title: INDICATIVE ELEVATIONS – GENERATING STATION PHASE 1 OF OPTION 2

THE PORT TALBOT STEELWORKS (POWER GENERATION ENHANCEMENT) ORDER  
 INDICATIVE ELEVATIONS – GENERATING STATION PHASE 1 OF OPTION 2



1 Callaghan Square  
 Cardiff  
 CF10 5BT  
 Tel: +44 (0) 292 067 4600  
 Fax: +44 (0) 292 067 4699  
 www.aecom.com

Drawn: L.C.Thomas (TATA)	Checked: GM
Regulation: 5(2)(c)	Scale at A1: 1:500
Date: JULY 2014	Revision: 01
Drawing Reference: 2.06 - Indicative Elevations Phase 1	A1



**PRELIMINARY**

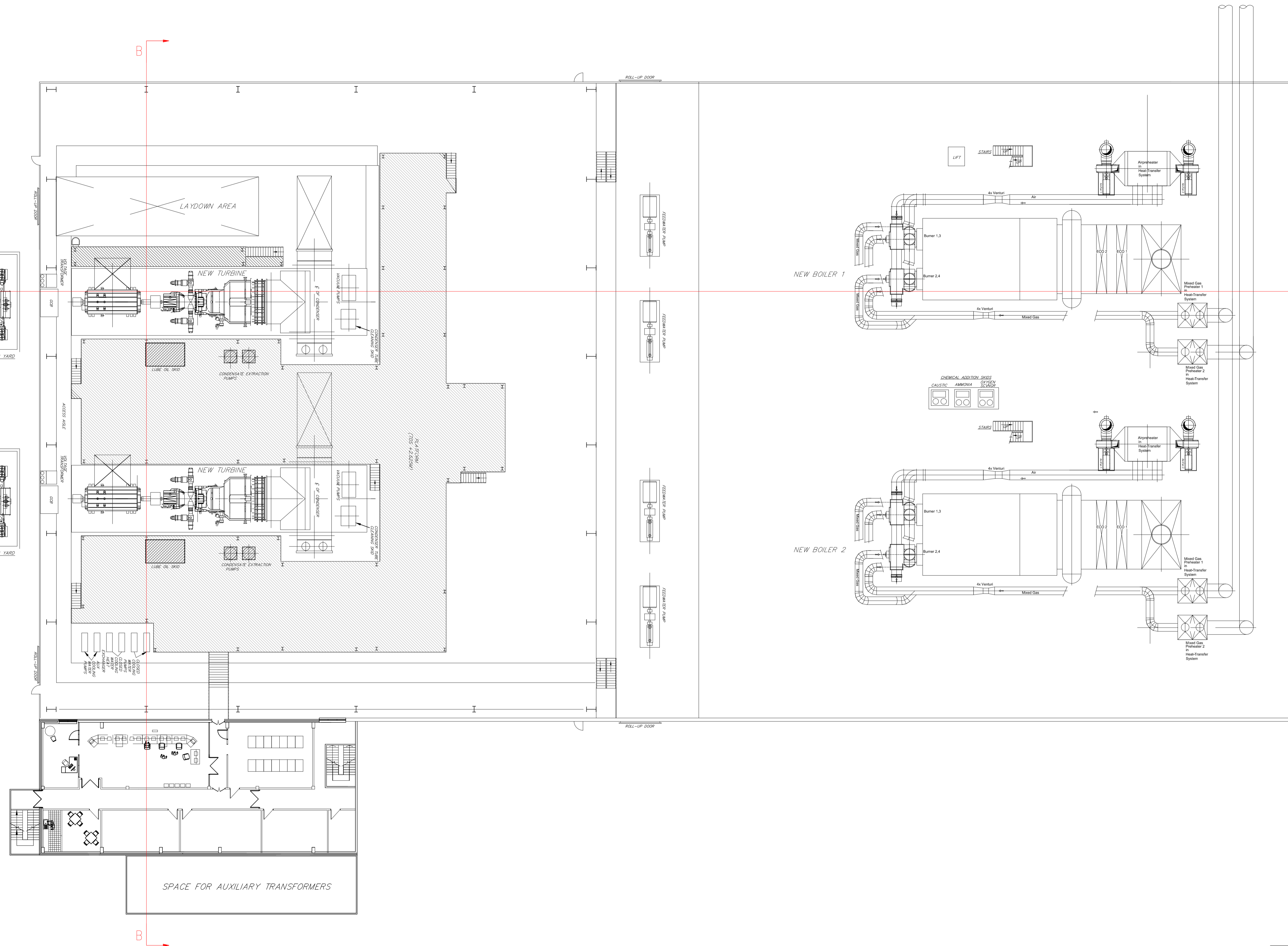


Client: **THE PORT TALBOT STEELWORKS (POWER GENERATION ENHANCEMENT) ORDER**  
 Project:  
 Title: **INDICATIVE ELEVATIONS - GENERATING STATION**

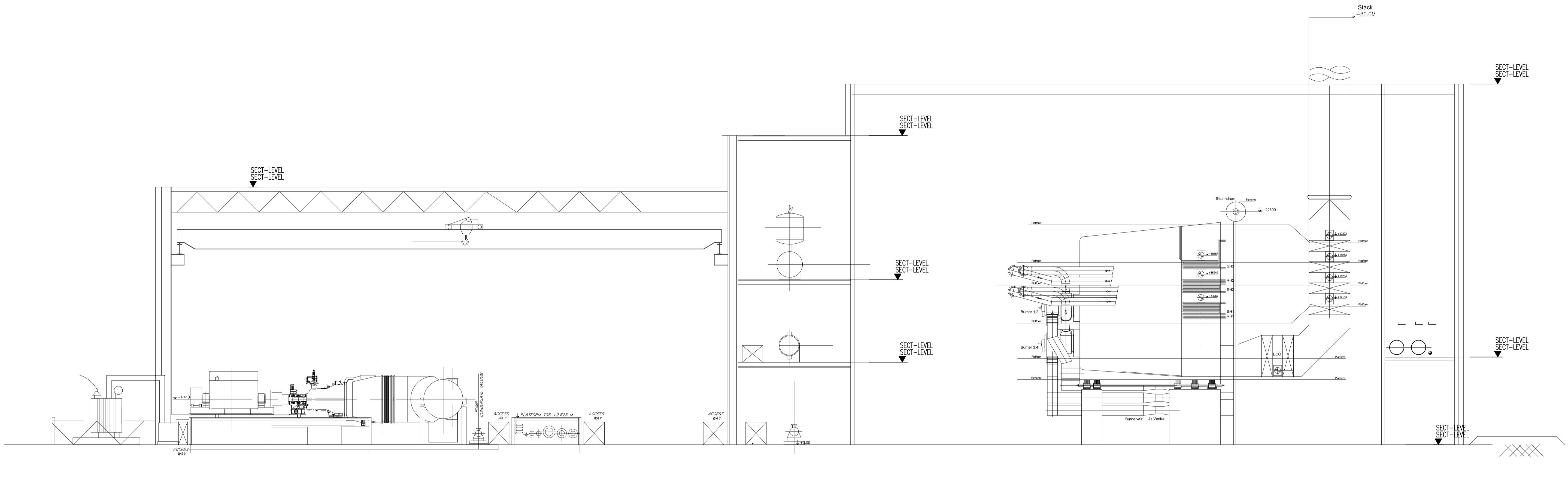


1 Callaghan Square  
 Cardiff  
 CF10 5BT  
 Tel: +44 (0) 292 067 4600  
 Fax: +44 (0) 292 067 4699  
 www.aecom.com

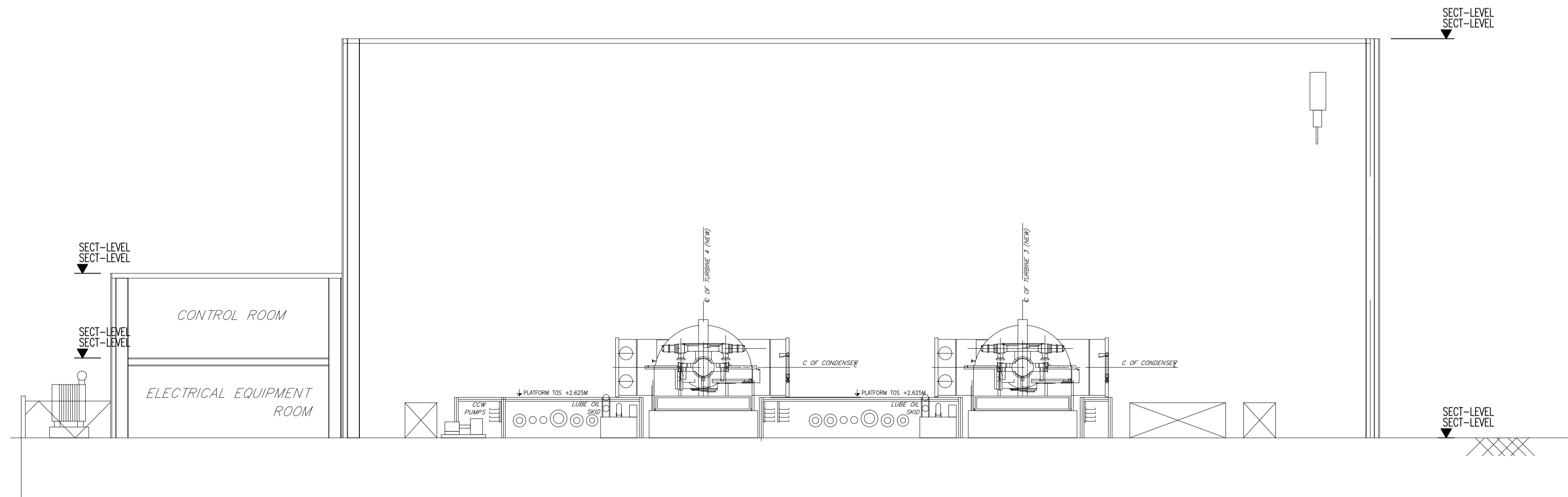
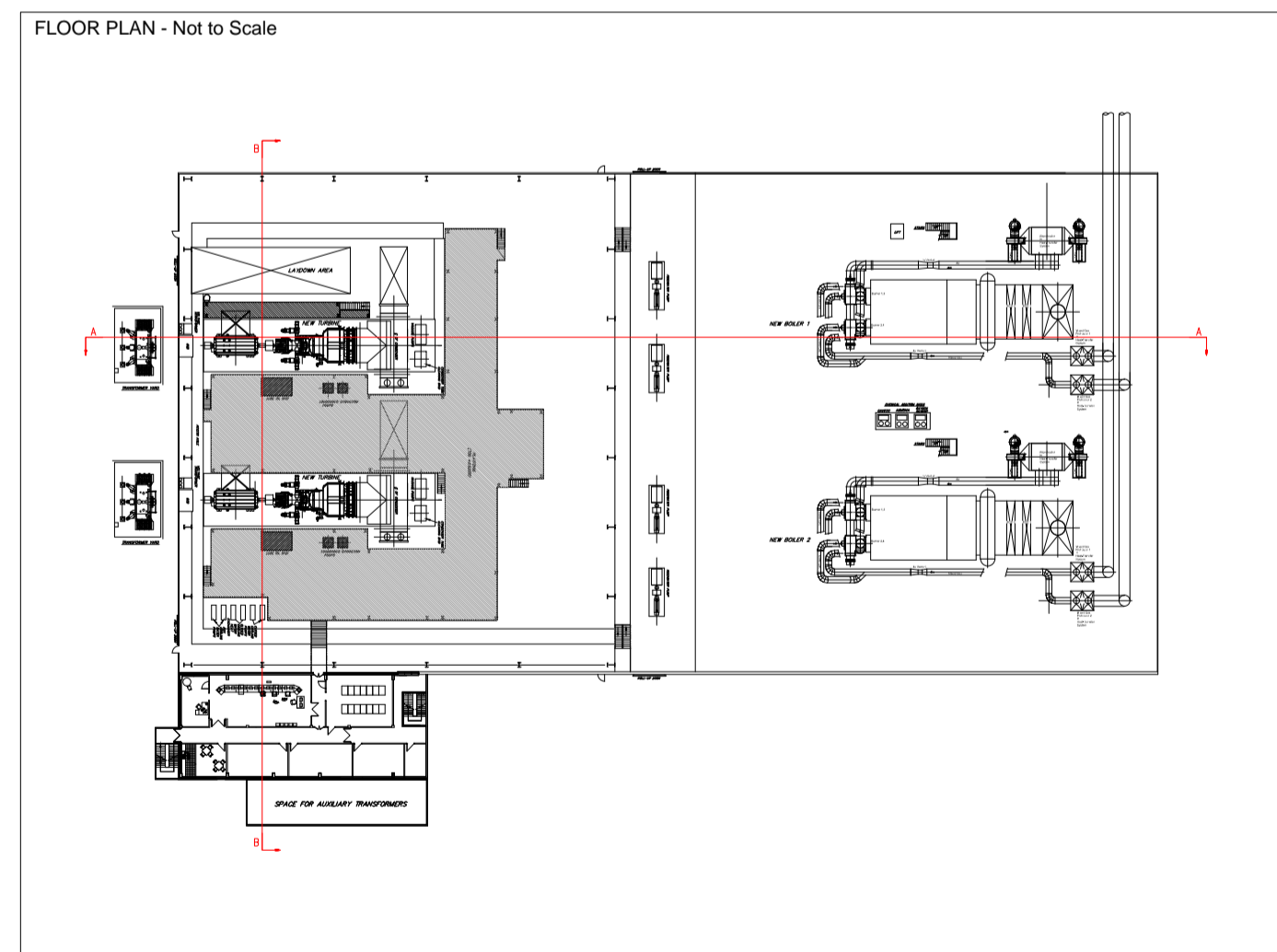
Drawn: L.C.Thomas (TATA)	Checked: GM
Regulation: 5(2)(c)	Scale at A1: 1:500
Date: JULY 2014	Revision: 01
Drawing Reference: 2.06 - Indicative Elevations	



**PRELIMINARY**



SECTION-AA



SECTION-BB

**PRELIMINARY**