



PROPOSED COMBINED CYCLE GAS TURBINE PALM PAPER 3 (CCGT PP3) IN KING'S LYNN

15 November 2012

Meeting Agenda

Overview of the Proposed Scheme

Scoping Opinion

Proposed Consultation Strategy

PINS Process

The Planning Act 2008 and changes to the regime

Anticipated Timescales Moving Forward

AOB

The Developer

Palm Paper Ltd. is the UK subsidiary company of Papierfabrik Palm, Germany

22 production facilities –
4 paper mills (3 in Germany, 1 in UK)
18 box plants

Several electricity and steam generating plants:
1 sludge combustor and
2 gas turbine plants
1 gas fired power plant

Planning Permission for **Lynn PM7** in November 2007;
including PM, DIP, ETP, Sludge Combustor etc.
(approx. 550,000 t / a of newsprint, 160 employees)

The Development

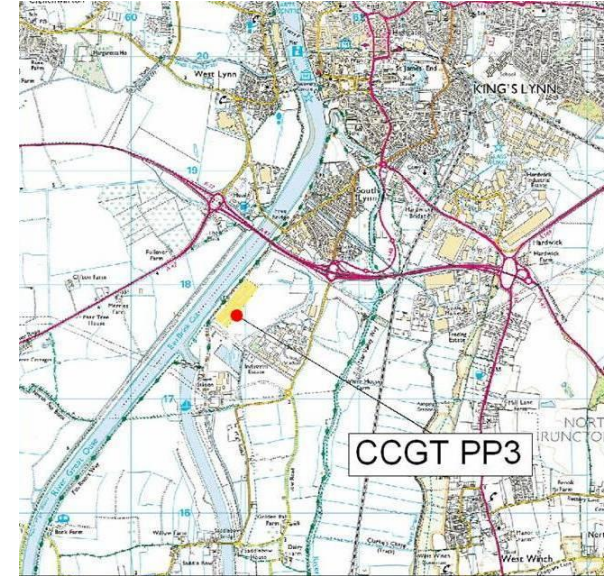
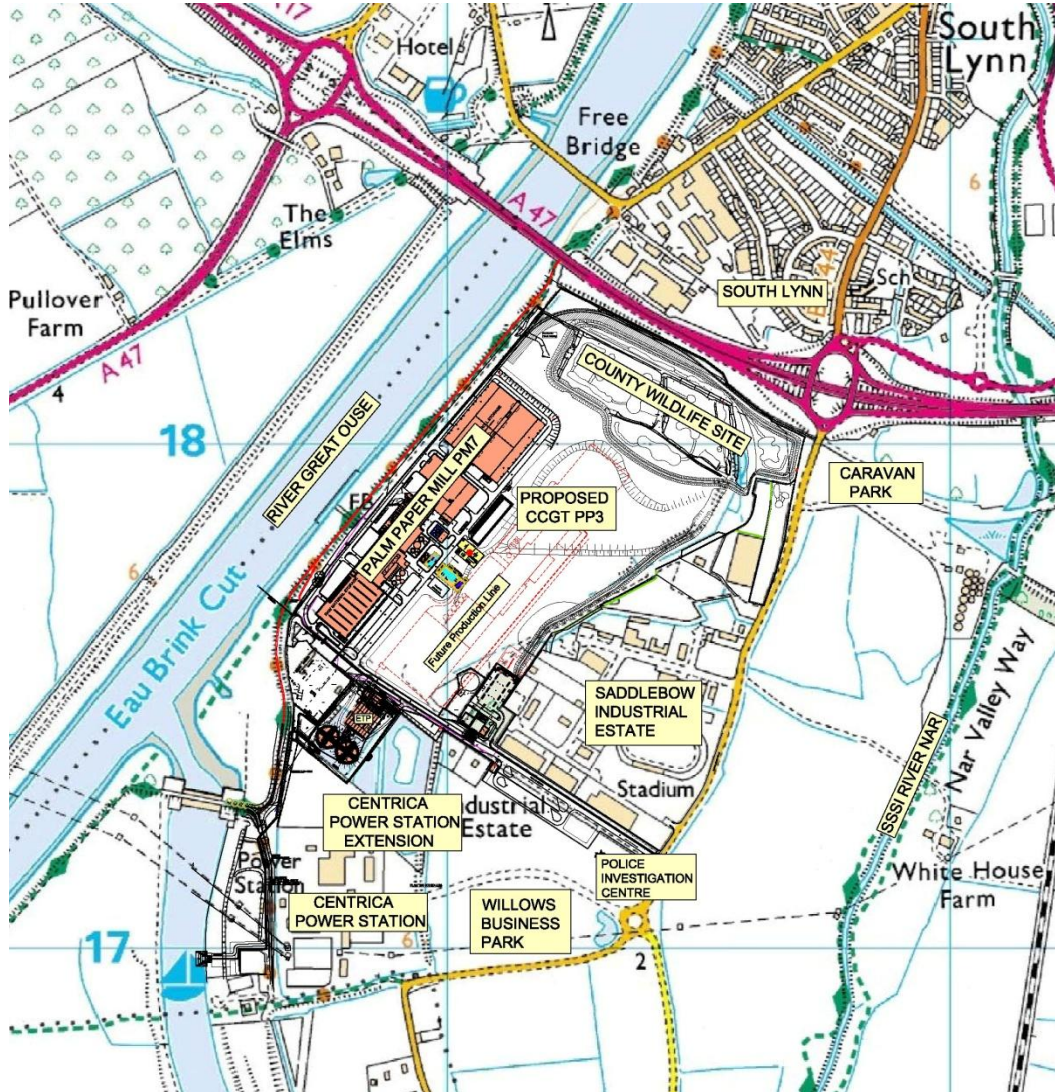
Combined Cycle Gas Turbine (CCGT) Palm Paper 3

Fuel:	Natural gas
Thermal capacity:	162 MW
Electrical output:	55-60 MWe
Steam:	130 t / h (peak load)
Plant efficiency:	85 %



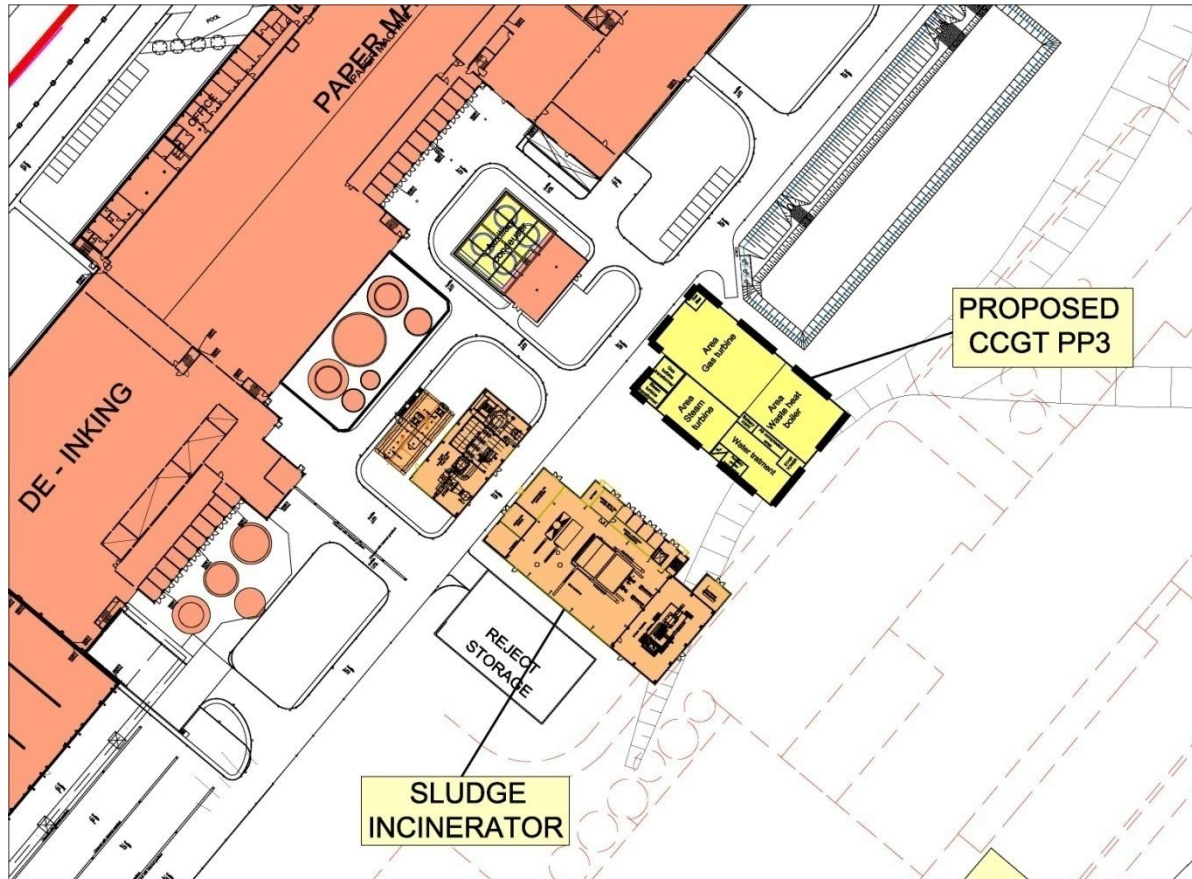
With the new CCGT Palm Paper seeks to reduce reliance on external sources energy.

SITE LOCATION



- 2.5km south-west of town centre
- Saddlebow Industrial Estate
- located on existing mill site between Sludge Combustor and Reject Storage

SITE LAYOUT - PM7 and CCGT PP3

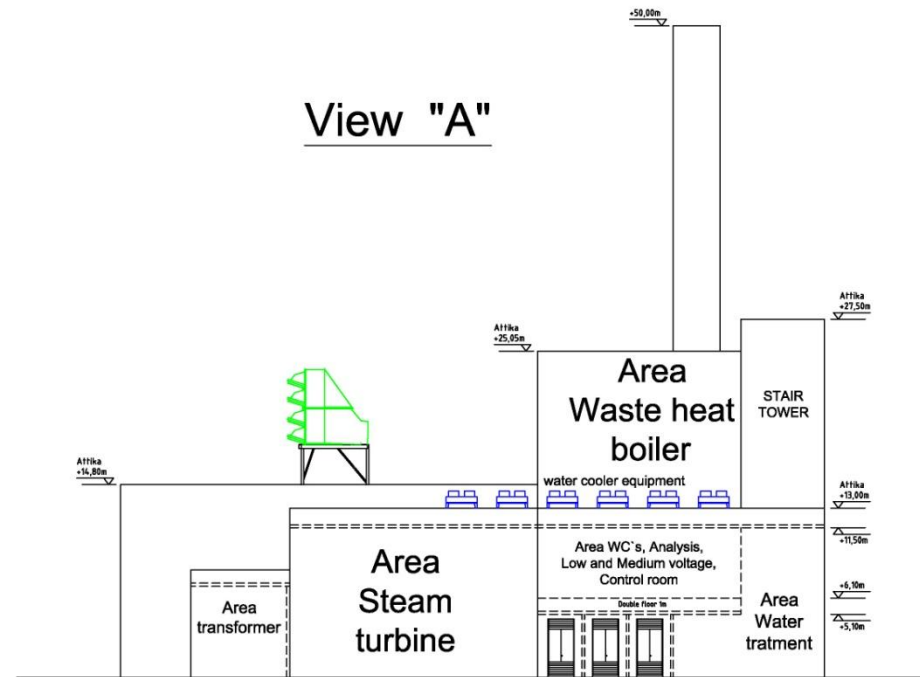
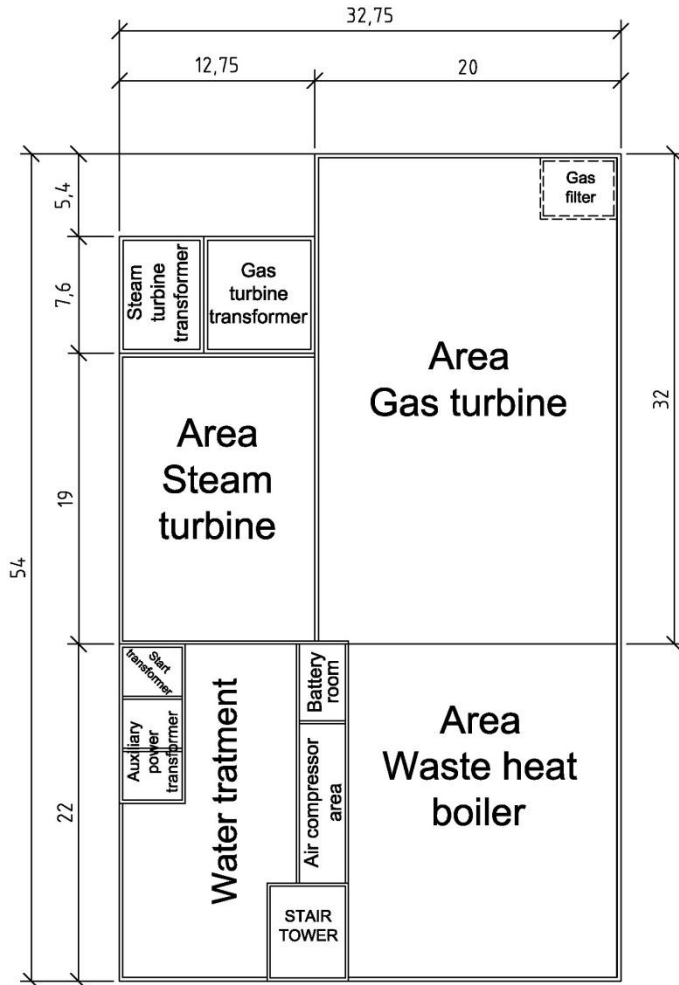


Proposed site layout

CCGT PP3 requires sludge combustor to be rotated 90° counter clockwise

→ Minor Variation

PLANT DIMENSIONS - Layout and Elevations



PROPOSED CONSULTATION STRATEGY



Proposed Community Consultation Strategy

Palm Paper Ltd

Proposed Combined Cycle
Gas Turbine

November 2012

DCH/7508

- publish SoCC in **Lynn News** newspaper
- send SoCC and Preliminary Information to
 - Norfolk County Council (**NCC**)
 - Borough Council of King's Lynn and West Norfolk (**KLWNBC**)and areas which border NCC and KLWNBC
- Borough Councils** of
 - North Norfolk, Breckland, Fenland, South Holland, Forest Heath and East Cambridgeshire,
- County Councils** of
 - Lincolnshire, Cambridgeshire and Suffolk,
- Parishes** and **Local Groups**