

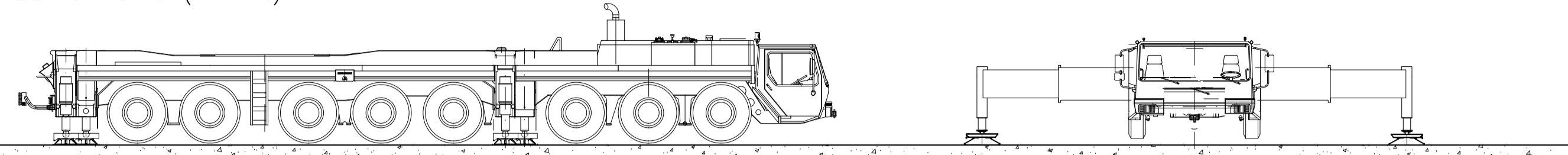
NOTE:  
FINAL CRANE PAD DESIGN & CONSTRUCTION BASED ON GROUND CONDITIONS AND TURBINE SELECTION. GENERALLY THIS WILL COMPRISE OF A REINFORCED EARTH DESIGN OVERLYING A SUITABLE FORMATION.

WHERE PRACTICAL ALL SOFT SUPERFICIAL DEPOSITS WILL BE REMOVED. TERRAM OR SIMILAR GEOTEXTILE FABRIC TO BE PLACED OVER FORMATION WITH 600mm CRUSHED ROCK COMPACTED IN APPROPRIATE LAYERS (150-250mm). GEOGRID TO BE USED WHERE NECESSARY TO ADD STRENGTH.

CROSSFALL IN ACCORDANCE WITH TURBINE SUPPLIER STANDARD (MAX 1%).

TURBINE

GROUND FLEVEL



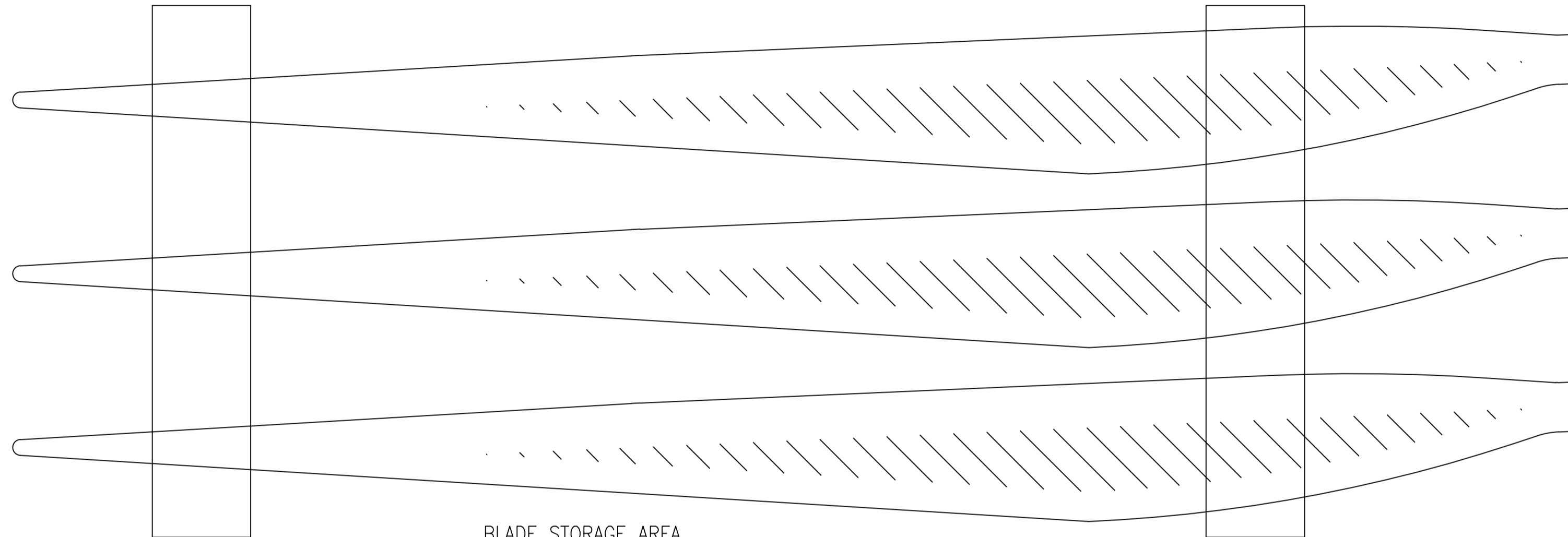
40.00m

**ELEVATION**

SCALE: 1:100

INDICATIVE DOWNSLOPE DRAINAGE WITH COARSE STONE AT BASE

ROTOR ASSEMBLY AREA



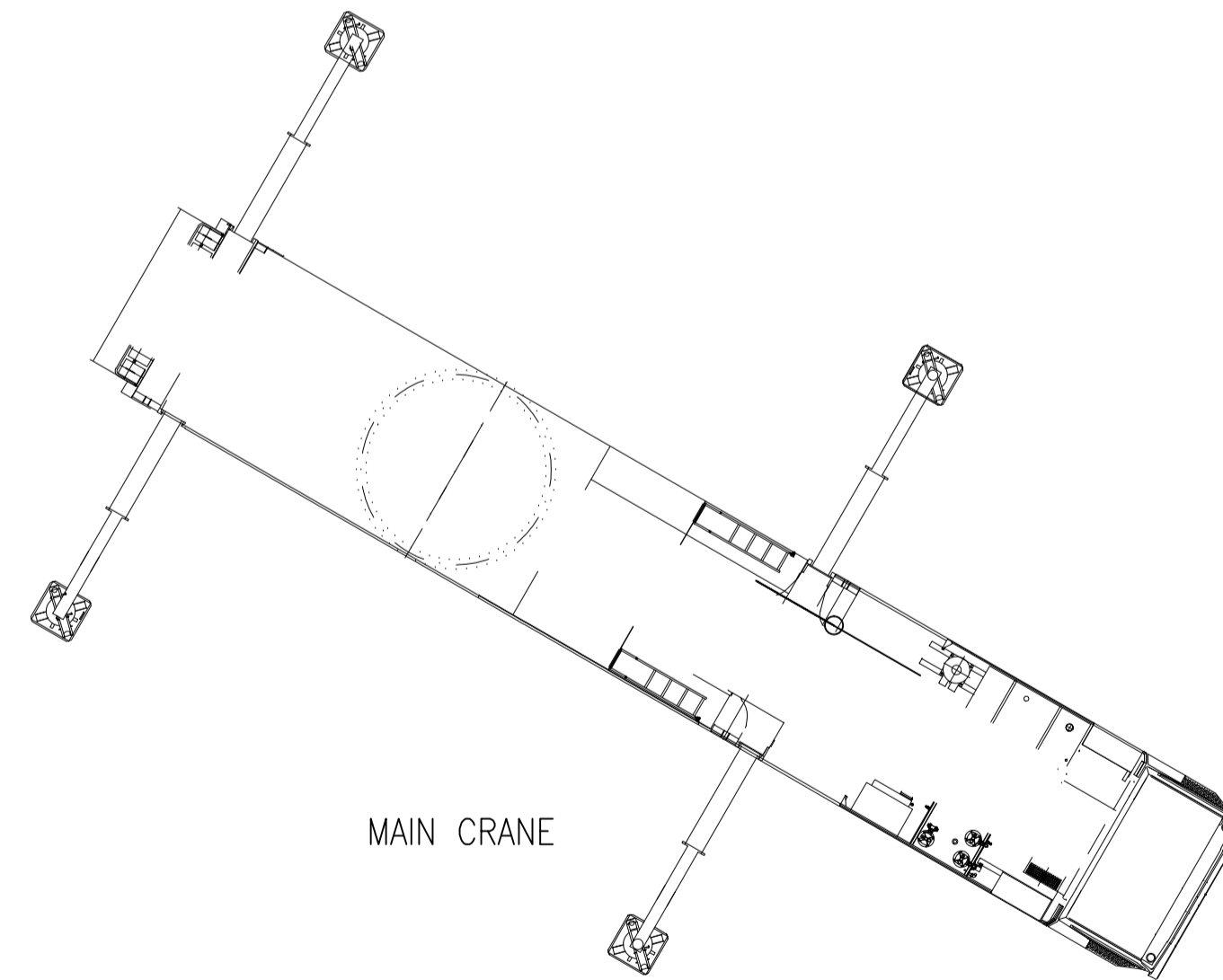
BLADE STORAGE AREA

FOUNDATION

TURBINE

2m HARDCORE ACCESS AREA MAINTAINED AROUND TURBINE TOWER

EXTENT OF HARD STANDING



MAIN CRANE

TAILING CRANE

CONSTRUCTION AREA

20.00m

ACCESS TRACK

40.00m

**PLAN VIEW**

REV.	DATE	DESCRIPTION
A	11.11.13	FOUNDATION REVISED


Client  
Mynydd y Gwynt Ltd

Project  
Mynydd y Gwynt  
PROPOSED WINDFARM

Title  
TYPICAL CRANE HARD STANDING  
PLAN AND ELEVATION

**Magna Project Services**  
Project Management Consultants

Unit 1, Chew Court Farm,  
Chew Magna, Bristol, BS40 8SF  
Tel/Fax: 01275 332 957  
Email: [rj.magnaps@btinternet.com](mailto:rj.magnaps@btinternet.com)



Date FEB 2012 Drawn by CATS/CAD

Scale 1:100 @ A1 Checked by RJ

Drawing No. MPS/117/06 Rev. A

**FIGURE 6.5**