



SIZEWELL C PROJECT –
FINAL ITINERARY FOR SITE INSPECTIONS

NOT PROTECTIVELY MARKED

FINAL ITINERARY FOR SITE INSPECTIONS

NOT PROTECTIVELY MARKED

CONTENTS

1	INTRODUCTION.....	1
2	ITINERARY FOR ACCOMPANIED SITE INSPECTIONS.....	2
2.2	Arrangements for the day.....	2

TABLES

Table 2.1: Itinerary for Accompanied Site Inspection Day 1: Main Development Site	4
Table 2.2: Itinerary for Accompanied Site Inspection Day 2: Main Development Site and Associated Developments.....	7
Table 2.3: Itinerary for Accompanied Site Inspection Day 3: Associated Developments	10

PLATES

None provided.

FIGURES

- Figure 1: Accompanied Site Inspection Day 1: Main Development Site
- Figure 2: Accompanied Site Inspection Day 2 Part 1: Main Development Site and Green Rail Route
- Figure 3: Accompanied Site Inspection Day 2 Part 2: Sizewell Link Road
- Figure 4: Accompanied Site Inspection Day 3: Overview Map
- Figure 5: Accompanied Site Inspection Day 3: Two village bypass

1 INTRODUCTION

- 1.1.1 As requested by the Rule 6 letter [\[PD-011\]](#), this document sets out SZC Co.'s itinerary and points of interest for the Examining Authority to visit as part of its Accompanied Site Inspection.
- 1.1.2 The itinerary notes areas which are not publicly accessible or where the Applicant and/or other Interested Parties assist with identifying the relevant points of interest; and
- 1.1.3 The notes provided after the Unaccompanied Site Inspections in August 2020 [\[EV-001\]](#) and February 2021 [\[EV-002\]](#) note the locations already visited by the Examining Authority.
- 1.1.4 Some of the locations already visited are also referenced on the Accompanied Site Inspection itinerary presented in **Section 2** of this document. The Applicant considers that these locations ought to be the subject of an Accompanied Site Inspection as well as an Unaccompanied Site Inspection, so that the Applicant and other Interested Parties can assist with directing the Examining Authority to the relevant points of interest.
- 1.1.5 The following locations, however, have been excluded from the itineraries, on the basis that they have already been visited by the Examining Authority, are not considered to require an additional Accompanied Site Inspection, and can be visited by the Examining Authority again as part of an Unaccompanied Site Inspection, if required:
- Leiston off-site sports facilities (visited on 18th and 19th August 2020);
 - fen meadow habitat at Benhall (visited on 19th August 2020);
 - fen meadow habitat at Halesworth (visited on 20th August 2020);
 - Westleton marsh harrier habitat improvement site (visited on 20th August 2020);
 - Leiston Abbey first and second site (visited on 19th August 2020, 16th and 18th February 2021); and
 - National Trust Dunwich Coastguard Cottages (visited on 20th August 2020 and 17th February 2021).
- 1.1.6 SZC Co. consulted East Suffolk Council, Suffolk County Council and RSPB, and has had regard to their comments in preparing this itinerary for submission to the Examining Authority.

2 ITINERARY FOR ACCOMPANIED SITE INSPECTIONS

- 2.1.1 The Examining Authority will determine who will attend the Accompanied Site Inspection. All those who visit the EDF Energy estate will be required to provide personal information for security prior to the visit and to bring an in-date passport or driving license with them on the day.
- 2.1.2 Subject to COVID-19 restrictions, the number of participants taking part in the Accompanied Site Inspections is likely to be limited. Due to the restriction in numbers, locations have been identified which are also visible from publicly accessible locations in the event the Examining Authority wish to visit the locations unaccompanied.
- 2.1.3 This itinerary has the approval for land access by landowners.

2.2 Arrangements for the day

COVID-19 mitigation measures

- 2.2.1 Lateral flow testing will be taking place in the morning at the Sizewell Sports and Social Club (Days 1 and 2) and Riverside Centre (Day 3).
- 2.2.2 On the main development site (Days 1 and 2), the use of 4x4 vehicles will be necessary. Due to the number of attendees and nature of the vehicles social distancing will not be possible within the vehicles. As such, a negative lateral flow test result will be required before boarding the vehicle, face masks must be worn inside at all times, unless medically exempt, and the windows will be down to promote a clean airflow.
- 2.2.3 For the associated developments (Days 2 and 3), a coach will be used to transport attendees between sites. Whilst this vehicle will have capacity to enable social distancing measures, a negative lateral flow test will still be required for the safety and comfort of attendees as well as the use of face masks on-board, unless medically exempt, and the opening of windows where practicable.
- 2.2.4 All attendees will have a lateral flow test on each day of the visit, as such attendees must arrive for the morning session (for either the morning visits or full day) or the afternoon session).

Lunch and restroom provisions

- 2.2.5 Lunch will be taken at the Sizewell Sports and Social Club (Days 1 and 2) and Riverside Centre (Day 3); attendees can bring their own or this can be provided. If attendees that wish to be provided with lunch, they must

write to the Planning Inspectorate to confirm this by **1 June 2021** and include any special dietary requirements so that catering arrangements can be made.

Clothing and Personal Protective Equipment (PPE) for the day

- 2.2.6 Attendees will be provided with the necessary PPE for the main development site visit (hi-vis jacket and hard hat) on the morning of the tour.
- 2.2.7 Whilst steel toe capped boots are not necessary, sturdy walking footwear is required for all visits and arms and legs must be covered at all times when on the main development site. As there are aspects of the site visits that require walking tours, attendees should sensibly dress to weather conditions.
- 2.2.8 A first aid kit will be provided on the coach, and a first aider will be available for the duration of the visits.

Route of the site visits

- 2.2.9 **Table 2.1** to **Table 2.3** summarise the itineraries for Accompanied Site Inspections. The points of interest are also shown on **Figures 1-5**.
- 2.2.10 Please note that whilst the Applicant will endeavour to visit every point of interest on the itineraries in the order listed on the tables, the order may change to account for the number of vehicles required for the visit.
- 2.2.11 Each attendee will be given an 'ASI pack' containing **Tables 2.1** to **2.3** , as well as the accompanying figures (**Figures 1** to **5**).

Table 2.1: Itinerary for Accompanied Site Inspection Day 1: Main Development Site

Location	Time	Points of Interest/ Notes	Location for attendees to join the ASI	Location for parking
Main Development site – Main Construction Area	09:00 – 10:00	Meet at Sizewell Sports and Social Club for safety briefing, lateral flow testing and use of restroom and facilities. Pick up and drive to site in 4x4 vehicles	Sizewell Sports and Social Club car park, King Georges Avenue, Leiston, IP16 4JX	Sizewell Sports and Social Club car park, King Georges Avenue, Leiston, IP16 4JX
(see Figure 1)	10:00– 12:30	Main Construction Area tour: <ul style="list-style-type: none"> - View of existing Sizewell B site and sites for relocated facilities: <ul style="list-style-type: none"> o Coronation Wood development area (MDS1). o Sizewell A land to be used for relocated facilities (MDS2). o Pillbox Field (MDS3), note Rosery cottages (MDS4). - Visit the Sizewell Drain. - Main site tour on 4x4s <ul style="list-style-type: none"> o View proposed Sizewell C main construction area (MDS5). o Northern mound (MDS6). o Note the area within Sizewell Marshes SSSI. o Note the boundary of Minsmere to Walberswick SPA/SAC/Ramsar site. o Site for SSSI Crossing (MDS7). 		
12:30 – 13:00 Lunch at Sizewell Sports and Social Club and use of restroom and facilities. Any additional attendees to meet at Sizewell Sports and Social Club by 12:15 for safety briefing and lateral flow testing.				

SIZEWELL C PROJECT –
FINAL ITINERARY FOR SITE INSPECTIONS

NOT PROTECTIVELY MARKED

Location	Time	Points of Interest/ Notes	Location for attendees to join the ASI	Location for parking
Main Development site – Temporary Construction Area (see Figure 1)	13:00 – 16:00	Temporary Construction Area tour (with 4x4s): <ul style="list-style-type: none"> - Identify areas that fall outside the original EN-6 area. - Visit Water Management Zone 1 – natterjack toad area (MDS8). - Note Goose Hill and Dunwich Forest (MDS9). - Stop at MDS10. Note the temporary construction area, main spoil management area, railhead location and the bat corridor. - Stop at Ash Wood Cottages (MDS11). - Walk north a short distance to note marsh harrier mitigation area (MDS12). - Stop at Lower Abbey Farm (MDS13) – walk a short distance east to note proposed bat barn, the combined flood mitigation area and wetlands. - Stop at Roundhouse (MDS14), note area for borrow pits (MDS15). - Stop at Potter's Farmhouse (MDS16). - Go down Bridleway 19 by accommodation campus site (MDS17), note the sandpit. - Stop at Upper Abbey Farm and Cottages (MDS18). - Stop at main roundabout site (MDS19). Note Greenhouse Plantation. - Stop at the Abbey Care Home at Old Abbey Farm (MDS20). - Drive down Sandy Lane (west end), short walk to the north-eastern end of the reptile mitigation area (MDS21). 		Sizewell Sports and Social Club car park, King Georges Avenue, Leiston, IP16 4JX

NNB Generation Company (SZC) Limited. Registered in England and Wales. Registered No. 6937084. Registered office: 90 Whitfield Street, London W1T 4EZ

NOT PROTECTIVELY MARKED

SIZEWELL C PROJECT –
FINAL ITINERARY FOR SITE INSPECTIONS

NOT PROTECTIVELY MARKED

Location	Time	Points of Interest/ Notes	Location for attendees to join the ASI	Location for parking
		<p>Note acid grassland and heathland creation and reptile receptor site at Broom Covert.</p> <ul style="list-style-type: none"> - Walk along Leiston drain back towards Sizewell B site, where possible (subject to site conditions), otherwise, stop along the way. Note Kenton Hills and reptile receptor site (MDS22). 		
<p>Main Development site – Sizewell Beach</p> <p>(see Figure 1)</p>	16:00 - 17:30	<ul style="list-style-type: none"> - Meet any additional attendees at Sizewell Beach car park. - Use of public facilities before walk begins. - Walk up the beach – note the following: <ul style="list-style-type: none"> o Note existing Sizewell B sea defences and Suffolk Coast Path (MDS23). o Locations for BLFs (MDS24 and MDS25). o Location for temporary surface water drainage outfall (MDS26). o Suffolk Shingle Beaches County Wildlife Site. o Note the boundary of Minsmere to Walberswick SPA/SAC/Ramsar site. 	Sizewell Beach Car Park, IP16 4UH	Sizewell Beach Car Park, IP16 4UH
	17:30	Close. Use of restroom facilities at Sizewell Sports and Social Club before departure if necessary.		

NOT PROTECTIVELY MARKED

SIZEWELL C PROJECT –
FINAL ITINERARY FOR SITE INSPECTIONS

NOT PROTECTIVELY MARKED

Location	Time	Points of Interest/ Notes	Location for attendees to join the ASI	Location for parking
		Pick up any additional attendees for green rail route and drop off any attendees at parking locations (to be agreed in advance with attendees, if required).		
	11:35 – 11:45	Use of public facilities at Sizewell Road.		Sizewell Road Car Park
Green Rail Route (see Figure 2)	11:50 – 12:50	Green Rail Route: <ul style="list-style-type: none"> - Stop at Aldhurst Farm (GRR1) – walk down E-363/006/0. - Walk up E-363/003/0 (GRR2) to north or south of Buckleswood Road, south of Buckle's Wood (ancient woodland). 		
13:00 – 13:30 Lunch at Sizewell Sports and Social Club and use of restroom and facilities. Any additional attendees to meet at Sizewell Sports and Social Club by 12:45 for safety briefing.				
Sizewell Link Road (see Figure 3)	13:45 – 18:15	Sizewell Link Road <ul style="list-style-type: none"> - Drive the route, stopping off at selected locations, as detailed below. Stop off at following locations (in east to west direction): <ul style="list-style-type: none"> o Start journey along B1122 from lay-by north of Moat Lane on B1122 (SLR1). o Detour on Moat Road. o Theberton village (SLR2). o Theberton Hall (SLR3). o Pretty Road (SLR4) to Hawthorn Road (SLR5), noting points where the route of Sizewell link road would intersect these roads, including location of 		Pick-up from lay-by north of Moat Lane, Theberton, B1122.

NOT PROTECTIVELY MARKED

SIZEWELL C PROJECT –
FINAL ITINERARY FOR SITE INSPECTIONS

NOT PROTECTIVELY MARKED

Location	Time	Points of Interest/ Notes	Location for attendees to join the ASI	Location for parking
		<p>Pretty Road overbridge (SLR4), connecting back on to B1122 south of Middleton Moor.</p> <ul style="list-style-type: none"> ○ Trust Farm (SLR6) - if permitted to use private access road, subject to landowner approval, or can park up on B1122, if possible and walk up E-396/023/0. ○ Middleton Moor (SLR7). ○ Fordley Road (SLR8) to Littlemoor Road (SLR9), before connecting back on to B1122 (noting points where the route of Sizewell link road would intersect and Oakfield House, on Fordley Road). ○ Littlemoor Road (SLR9) (note the location of 'Middleton Moor link' where roundabout will be (SLR10)). <ul style="list-style-type: none"> ▪ Optional Stop – stop at Littlemoor Road, north of Littlemoor Spring, and walk Footpath E-396/014/0 and E-584/016/0 for view of the East Suffolk line crossing (SLR_Opt). ○ Drive from Littlemoor Road to the A12, near future connection between Sizewell link road and A12 (Lay-by near The Red House Farm and Town Farm Lane – note location proposed for contractor compounds (SLR11)). ○ Drive down B1122 through the villages of Middleton Moor and Theberton. 		

NOT PROTECTIVELY MARKED

Location	Time	Points of Interest/ Notes	Location for attendees to join the ASI	Location for parking
	18:15	Close, return attendees to any parking locations, as required. Use of restroom facilities at Sizewell Sports and Social Club before departure if necessary.		

Table 2.3: Itinerary for Accompanied Site Inspection Day 3: Associated Developments

Location	Time	Points of Interest / Notes	Location for attendees to join the ASI	Location for parking
Riverside Centre	09:00 – 10:00	Meet at Riverside Centre for safety briefing, lateral flow testing and use of restroom and facilities.	Riverside Centre, Stratford St Andrew, IP17 1LL	Riverside Centre, Stratford St Andrew, IP17 1LL
Northern Park and Ride (see Figure 4)	10:15 – 11:00	Northern Park and Ride <ul style="list-style-type: none"> - LVIA viewpoints – refer to ES Volume 3, Figure 6.4 [APP-362]. - Note the proximity to the Darsham Train Station, Willow Marsh Lane and adjacent properties. 		Darsham Services, A12 Main Road, IP17 3PW
Yoxford Roundabout (see Figure 4)	11:15 - 11:45	Yoxford Roundabout <ul style="list-style-type: none"> - Note Yoxford Conservation Area and Conservation Area extension. - Roadside Nature Reserve 197. - River Yox. - Note land associated with Heveningham Hall Estate. - Stop at Cockfield Hall. 		
12:00 – 12:30 Lunch at Riverside Centre and use of restroom and facilities.. Any additional attendees to meet at Riverside Centre by 11:45 for safety briefing and lateral flow testing.				
	12:30	Two Village Bypass		

Location	Time	Points of Interest / Notes	Location for attendees to join the ASI	Location for parking
Two village bypass (see Figure 5)		<ul style="list-style-type: none"> - Meeting point at Riverside Centre, Stratford St Andrew (TVB MP) <ul style="list-style-type: none"> o View of A12 current operation 		
	12:45 – 16:00	<p>Two Village Bypass walkover</p> <ul style="list-style-type: none"> - Pick up at Riverside Centre, Stratford St Andrew (TVB MP), drive through villages and all exit bus at Friday Street Farm (TVB1). - Walk route North to South: <ul style="list-style-type: none"> o Friday Street Farm (TVB1) (via access track if permission granted, towards Mollett's Farm connecting to E-137/029/0). o Mollett's Farm (TVB2) (then connect back to E-243/006/0, passing Palant's Grove and Foxburrow Wood). o Note the ancient trees (97, 97 on Figure 5) as detailed in the Deadline 1 submission made by FERN. o Foxburrow Wood and parts of Palant's Grove (TVB3) (along south of Foxburrow Wood, connect to E-243/003/0 towards Farnham Hall). o Note the ancient lane (TVB10) o Note the ancient trees (118, 119, 120 on Figure 5) as detailed in the Deadline 1 submission made by FERN. 		Friday Street Farm, Molletts Farm, A12, Farnham

SIZEWELL C PROJECT –
FINAL ITINERARY FOR SITE INSPECTIONS

NOT PROTECTIVELY MARKED

Location	Time	Points of Interest / Notes	Location for attendees to join the ASI	Location for parking
		<ul style="list-style-type: none"> ○ Farnham Hall and surrounding properties (TVB4) (connecting to access road, south of Farnham at the Old Vicarage). ○ Pond Wood (TVB9) ○ The Old Vicarage (TVB5) (turn south past Nuttery Belt to Pond Barn). ○ Nuttery Belt (TVB6), travelling back towards Nuttery Belt, taking RoW E-243/001/0 on the west side of Nuttery Belt, then: <ul style="list-style-type: none"> ▪ Option 1 (requires landowner permission to use accommodation access track): continue until reaching access track which connects to Park Gate Farm and Tinker Brook, if permitted by landowner (TVB7). This route will cross over the River Alde to the north of where two village bypass would cross the river. ▪ Option 2: walk back to the road towards the Old Vicarage for pick up, either at Old Vicarage or to Farnham, view St Mary's parish church in Farnham, and drive to Park Gate Farm. ○ Park Gate Farm (via Tinker Brook) (TVB8), noting junction with A12 and proposed location of the roundabout. 		
	16:15 – 16:30	Use of restroom facilities		Riverside Centre, Stratford St Andrew, IP17 1LL

NNB Generation Company (SZC) Limited. Registered in England and Wales. Registered No. 6937084. Registered office: 90 Whitfield Street, London W1T 4EZ

NOT PROTECTIVELY MARKED

Location	Time	Points of Interest / Notes	Location for attendees to join the ASI	Location for parking
Southern Park and Ride (see Figure 4)	16:45– 17:30	Southern Park and Ride: <ul style="list-style-type: none"> - On the drive to southern park and ride, stop over at Glemham Hall. - Note Little Glemham and Marlesford on the A12. - LVIA viewpoints (landscaping) – refer to ES Volume 4, Figure 6.4 [APP-392]. - Drive through Wickham Market, note B1078 junction, as well as parking between Border Cot Lane and River Debden bridge noting street. 		Layby on the slip road to the A12, north of Wickham Market in the parish of Hacheston
	17:30 - 17:45	Return to The Riverside Centre.		

FIGURES

Figure 1: Accompanied Site Inspection Day 1: Main Development Site

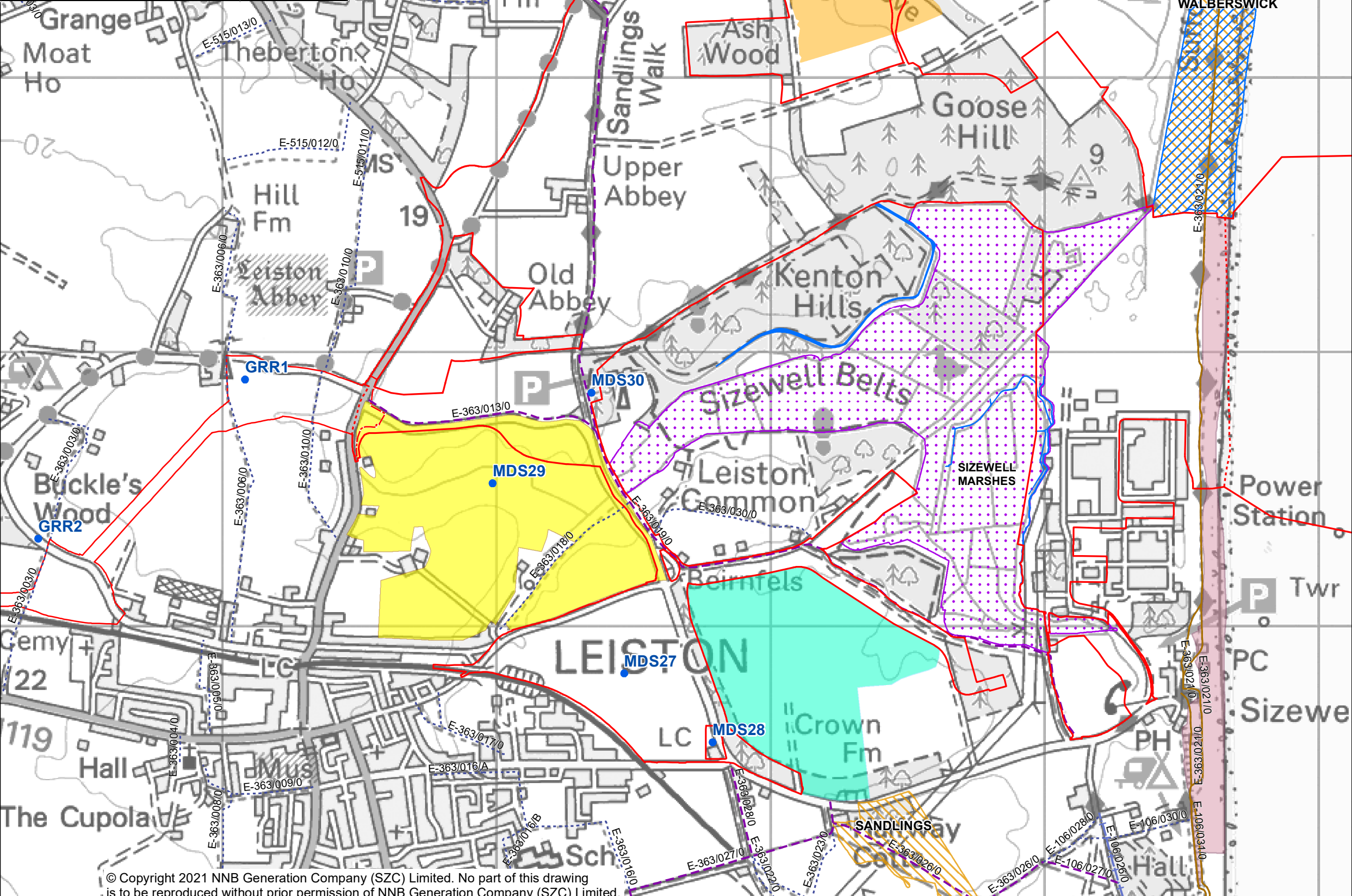
Figure 2: Accompanied Site Inspection Day 2 Part 1: Main Development Site and Green Rail Route

Figure 3: Accompanied Site Inspection Day 2 Part 2: Sizewell Link Road

Figure 4: Accompanied Site Inspection Day 3: Overview Map

Figure 5: Accompanied Site Inspection Day 3: Two village bypass

NAME	ID
LEEIE	MDS27
Crown Lodge	MDS28
Aldhurst Farm Habitat Creation Scheme	MDS29
Kenton Hills Car Park	MDS30
Aldhurst Farm	GRR1
Buckle's Wood	GRR2



KEY

- SIZEWELL C AND ASSOCIATED DEVELOPMENT SITE BOUNDARIES
- DEMARCATION LINE
- TO BE VISITED IN DAY 2
- SUFFOLK COAST PATH
- REPTILE MITIGATION AREA
- MARSH HARRIER MITIGATION AREA
- SUFFOLK SHINGLE BEACHES
- DRAIN
- ALDHURST FARM HABITAT CREATION SCHEME
- SPECIAL AREA OF CONSERVATION (SAC)
- SITE OF SPECIAL SCIENTIFIC INTEREST (SSSI)
- SPECIAL PROTECTION AREA (SPA)

PUBLIC RIGHT OF WAY

- FOOTPATH
- BRIDLEWAY
- BYWAY
- RESTRICTED BYWAY

NOT PROTECTIVELY MARKED

COPYRIGHT
Reproduced from Ordnance Survey map with the permission of Ordnance Survey on behalf of the controller of Her Majesty's Stationary Office © Crown Copyright (2021). All Rights reserved. NNB GenCo 0100060408.

© Natural England material is reproduced with the permission of Natural England 2019.

PROW data sourced from Suffolk CC on 27/02/2019 under OGL v3.0 are an interpretation of the Definitive Map and Statement, not the Definitive Map itself, and should not be relied on for determining the position or alignment of any public right of way. The data contains Ordnance Survey data © Crown copyright and database right 2019.

CWS: The Licensor grants to the End User a non-exclusive, non-transferable licence (revocable pursuant to the terms of this End User Licence) to use Supplied Data for the End User Purpose for the Term

Doing the power of good for Britain

DOCUMENT:
ACCOMPANIED SITE INSPECTIONS ITINERARY

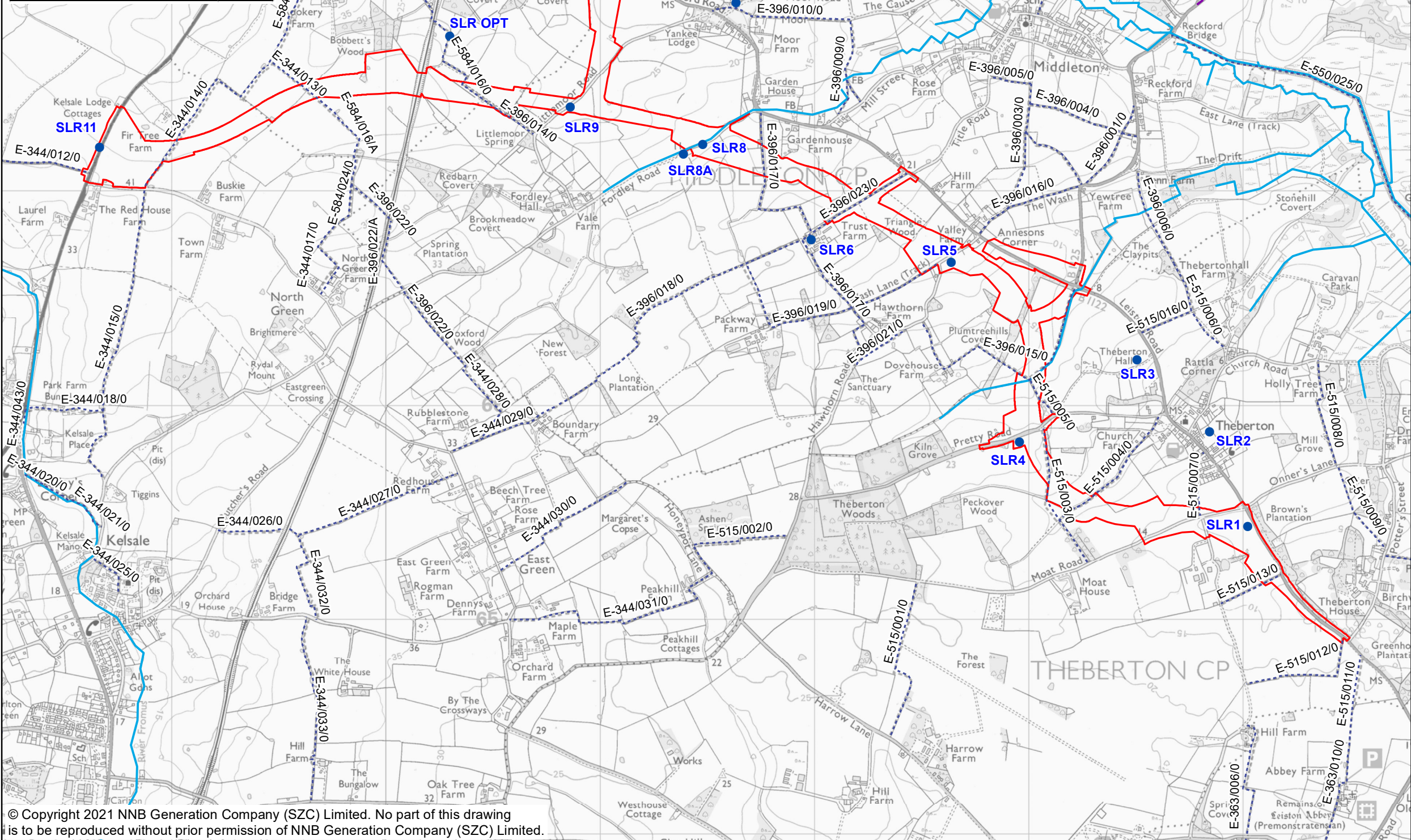
DRAWING TITLE:
ACCOMPANIED SITE INSPECTION DAY 2:
MAIN DEVELOPMENT SITE AND
GREEN RAIL ROUTE

DRAWING NO:
FIGURE 2

DATE: APR 2021	DRAWN: A.M.	SCALE: 1:15,000 @A3	REV: 01
-------------------	----------------	------------------------	------------

SCALE BAR
0 200 400 M

NAME	ID
Moat Road	SLR1
Theberton Village	SLR2
Theberton Hall	SLR3
Pretty Road / Proposed Pretty Road Bridge	SLR4
Hawthorn Road	SLR5
Trust Farm	SLR6
Middleton Moor	SLR7
Fordley Road	SLR8
Oakfield House, Fordley Road	SLR8A
Littlemoor Road	SLR9
Proposed Middleton Link and roundabout	SLR10
A12	SLR11
View of the East Suffolk line road crossing	SLR OPT



KEY

- SIZEWELL LINK ROAD DEVELOPMENT
- SITE BOUNDARY
- TO BE VISITED IN DAY 2
- OS_Rivers_pl
- PUBLIC RIGHT OF WAY (SUFFOLK COUNTY COUNCIL)
- FOOTPATH
- BRIDLEWAY
- BYWAY
- RESTRICTED BYWAY

NOT PROTECTIVELY MARKED

COPYRIGHT
Reproduced from Ordnance Survey map with the permission of Ordnance Survey on behalf of the controller of Her Majesty's Stationery Office © Crown Copyright (2021). All Rights reserved. NNB GenCo 0100060408.

PROW data sourced from Suffolk CC on 27/02/2019 under OGL v3.0 are an interpretation of the Definitive Map and Statement, not the Definitive Map itself, and should not be relied on for determining the position or alignment of any public right of way. The data contains Ordnance Survey data © Crown copyright and database right 2019.

Sizewell
Doing the power of good for Britain

EDF **CGN**

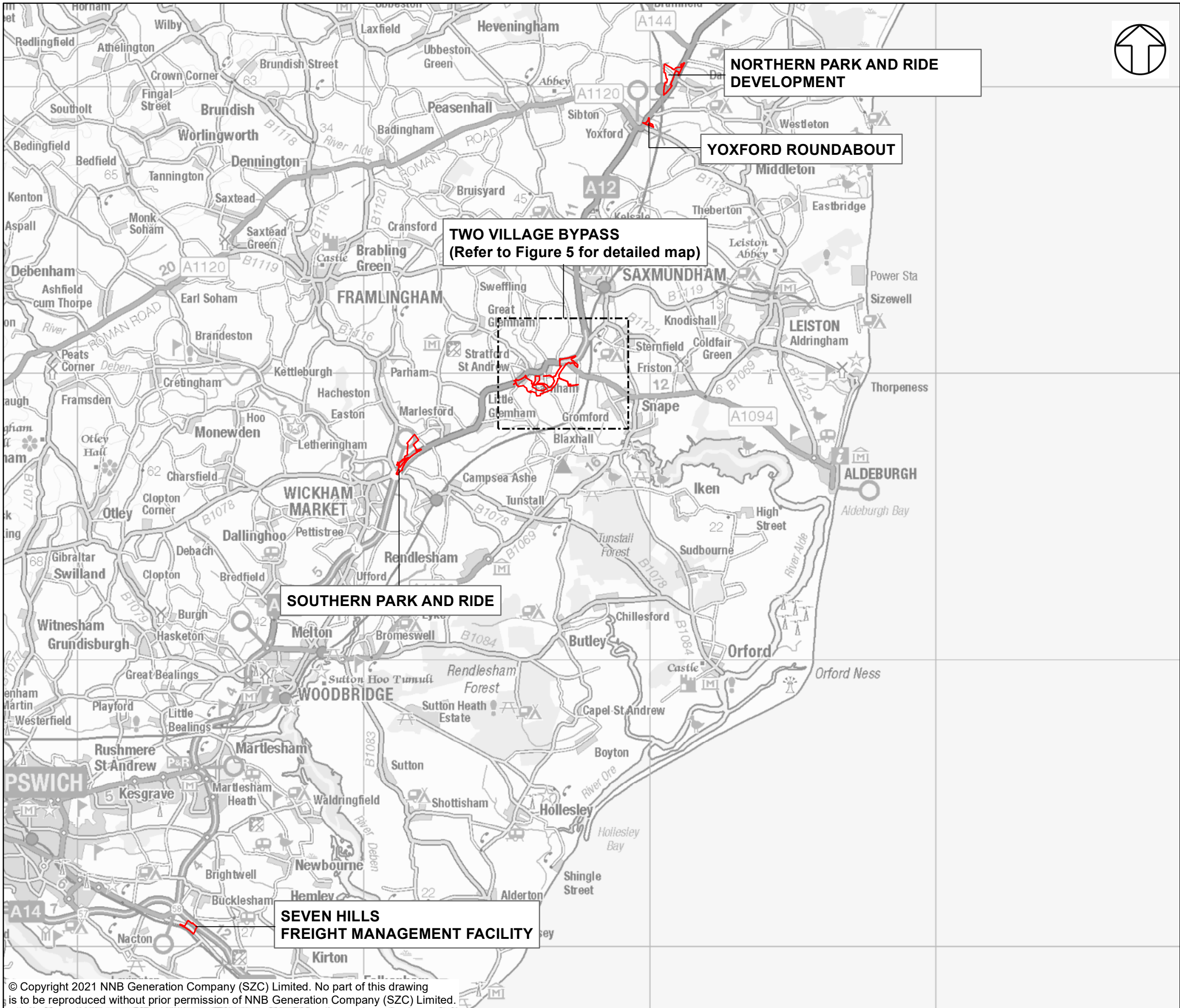
DOCUMENT:
ACCOMPANIED SITE INSPECTIONS ITINERARY


DRAWING TITLE:
DAY 2 - SIZEWELL LINK ROAD

DRAWING NO:
FIGURE 3

DATE: MAY 2021 **DRAWN:** A.M. **SCALE:** 1:20,000 @A3 **REV:** 01


SCALE BAR
0 200 400 600 800 1,000 M




KEY
 ASSOCIATED DEVELOPMENT SITE BOUNDARIES

NOT PROTECTIVELY MARKED

COPYRIGHT
Reproduced from Ordnance Survey map with the permission of Ordnance Survey on behalf of the controller of Her Majesty's Stationery Office © Crown Copyright (2021). All Rights reserved. NNB GenCo 0100060408.



Doing the power of good for Britain



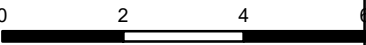
DOCUMENT:
ACCOMPANIED SITE INSPECTIONS ITINERARY

DRAWING TITLE:
DAY 3 – OVERVIEW MAP

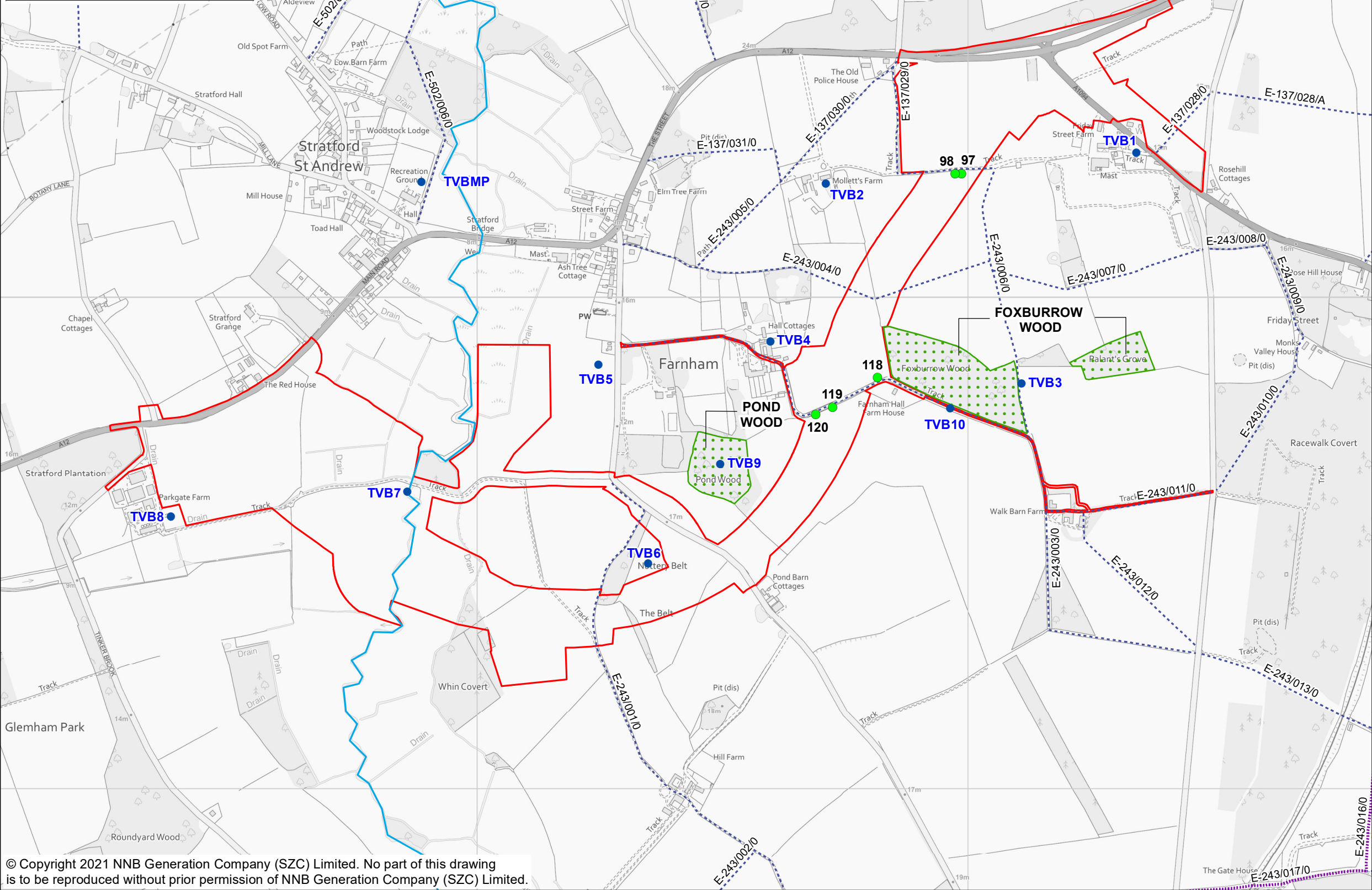
DRAWING NO:
FIGURE 4

DATE: APR 2021	DRAWN: A.M.	SCALE: 1:125,000 @A3	REV: 01
-------------------	----------------	-------------------------	------------

SCALE BAR



NAME	ID
Riverside Centre Meeting Point	TVBMP
Friday Street Farm	TVB1
Mollett's Farm	TVB2
Foxburrow Wood and Palant's Grove	TVB3
Farnham Hall, 1 & 2 Farnham Barn and 1 & 2 Hall Cottages	TVB4
The Old Vicarage	TVB5
Nuttery Belt	TVB6
River Alde	TVB7
Park Gate Farm	TVB8
Pond Wood	TVB9
Ancient lane	TVB10



KEY

TWO VILLAGE BYPASS DEVELOPMENT SITE BOUNDARY

TO BE VISITED IN DAY 3

TREE OF INTEREST

ANCIENT WOODLAND

RIVER ALDE

PUBLIC RIGHT OF WAY

FOOTPATH

BYWAY

RESTRICTED BYWAY

NOT PROTECTIVELY MARKED

COPYRIGHT
Reproduced from Ordnance Survey map with the permission of Ordnance Survey on behalf of the controller of Her Majesty's Stationary Office © Crown Copyright (2021). All Rights reserved. NNB GenCo 0100060408.

© Natural England material is reproduced with the permission of Natural England 2021.

PROW data sourced from Suffolk CC on 27/02/2019 under OGL v3.0 are an interpretation of the Definitive Map and Statement, not the Definitive Map itself, and should not be relied on for determining the position or alignment of any public right of way. The data contains Ordnance Survey data © Crown copyright and database right 2019.

Sizewell

Doing the power of good for Britain

edf

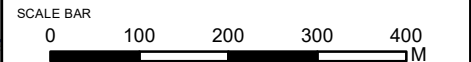
CGN

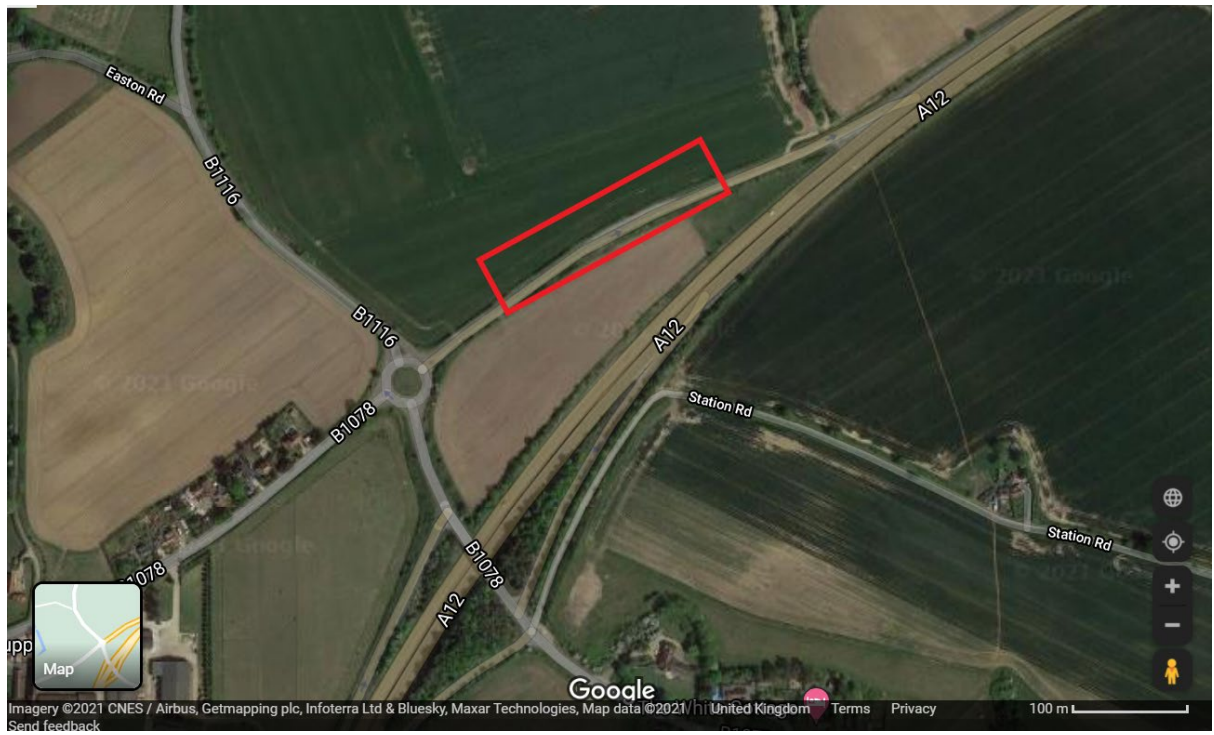
DOCUMENT:
ACCOMPANIED SITE INSPECTIONS ITINERARY

DRAWING TITLE:
DAY 3 - TWO VILLAGE BYPASS – DETAILED MAP

DRAWING NO:
FIGURE 5

DATE: MAY 2021	DRAWN: A.M.	SCALE: 1:8,500 @A3	REV: 01
-------------------	----------------	-----------------------	------------







SIZEWELL C PROJECT –
ITINERARY FOR HPC ACCOMPANIED SITE VISIT

NOT PROTECTIVELY MARKED

ITINERARY FOR SITE VISIT TO HINKLEY POINT C

NOT PROTECTIVELY MARKED



SIZEWELL C PROJECT –
ITINERARY FOR HPC ACCOMPANIED SITE VISIT

NOT PROTECTIVELY MARKED

CONTENTS

1	INTRODUCTION.....	1
---	-------------------	---

TABLES

Table 1.1: Itinerary for the Examining Authorities Accompanied Site Inspection (ASI) to the Hinkley Point C Site	2
--	---

PLATES

None provided.

FIGURES

None provided.

NOT PROTECTIVELY MARKED

1 INTRODUCTION

1.1.1 As requested by the Rule 8 letter [\[PD-011\]](#), this document sets out SZC Co.'s suggested itinerary for the Examining Authorities Accompanied Site Inspection (ASI) to the Hinkley Point C Site. Any views into the site from particular view points or visits to the surrounding area will be done unaccompanied.

1.1.2 The Examining Authority will determine who will attend the Accompanied Site Inspection. All those included will be required to provide personal information for security prior to the visit (details of their Full Name, Date of Birth, Nationality and Country of Birth). This information will be collected via a registration form (refer to Appendix A) and will need to be sent back to PINS by 23.59 on **Tuesday 8th June**. On the day, attendees need to bring either a current passport or photo driving licence as identification with them. This is a requirement of entering a Nuclear Licenced Site.

COVID-19 mitigation measures

1.1.3 Lateral flow testing will be taking place in the morning at Cannington Court.

1.1.4 Minibuses will be used to transport attendees between sites. Whilst this vehicle will have capacity to enable social distancing measures (a seat between each attendee), a negative lateral flow test will still be required for the safety and comfort of attendees visiting the Nuclear Licenced Site, as well as the use of face masks on-board and the opening of windows to promote clean airflow.

Lunch provisions

1.1.5 Lunch will be provided at Cannington Court. Attendees that wish to bring their own lunch, or have special dietary requirements must note this on the registration form provided (Appendix A), which must be sent back to PINS by 23.59 on **Tuesday 8 June 2021**.

Clothing and Personal Protective Equipment (PPE) for the day

1.1.6 Attendees will not need PPE for the visit but should this change, it will be provided.

1.1.7 Whilst steel toe capped boots are not necessary, sturdy walking footwear is required and arms and legs must be covered at all times. Attendees should sensibly dress to weather conditions.

Route of the site visit

- 1.1.8 **Table 1.1** sets out the itinerary.
- 1.1.9 Please note that whilst the Applicant will endeavour to visit the points of interests in the order as listed in the table, the order may change to account for site conditions.

Table 1.1: Itinerary for the Examining Authorities Accompanied Site Inspection (ASI) to the Hinkley Point C Site ¹

Date	Time and Activity
22nd June 2021	<p>09.00am</p> <p>As there is no parking available at Cannington Court, those travelling by car should park at Cannington Park and Ride Site and will be transported by minibus to Cannington Court. All visitors will undergo a lateral flow test, a security briefing and have the opportunity to use the restroom and facilities. Parties travelling by public transport, or from overnight stays locally, can arrive directly at Cannington Court.</p>
	<p>10:00am</p> <p>Depart Cannington Court and travel to the Hinkley Point C Site via Bus/Coach. Route to include Cannington Bypass (AD Site)</p>
	<p>10:25am</p> <p>Bus/Coach guided tour around the Hinkley Point C Site to include:</p> <ul style="list-style-type: none"> • Temporary office and welfare facilities • Community Safety Centre and Hinkley Health • Permanent Buildings and Structures under construction • Batching Plants and other Temporary Construction facilities and structures • Temporary Aggregate Jetty and Sea Wall • Materials Stockpile and Compounds • External Car Park
	<p>11:55am</p> <p>Travel to Hinkley Campus (AD Site) for stop and visit.</p> <p>Use of restrooms and facilities if necessary.</p>

¹ As noted in the Rule 8 letter, the ASI is dependant on COVID-19 restrictions and Site Rules in place at the Hinkley Point C Site permitting the ASI to go ahead. Face masks will need to be worn for most of the day, with social distancing measures observed when not worn.

Date	Time and Activity
	<p>12:30pm</p> <p>Travel to entrance of Emergency Access Road for stop and walking tour of southern landscape/ecology area.</p>
	<p>1pm</p> <p>Travel to Cannington Court via Cannington Village.</p>
	<p>1:30pm</p> <p>Lunch provided at Cannington Court for ExA and Interested Parties.</p>
	<p>2:15pm</p> <p>Transport back to Cannington Park and Ride, or to Taunton station if requested in advance.</p>

