



The Sizewell C Project

8.14 Water Framework Directive Compliance Assessment Report Addendum Figures

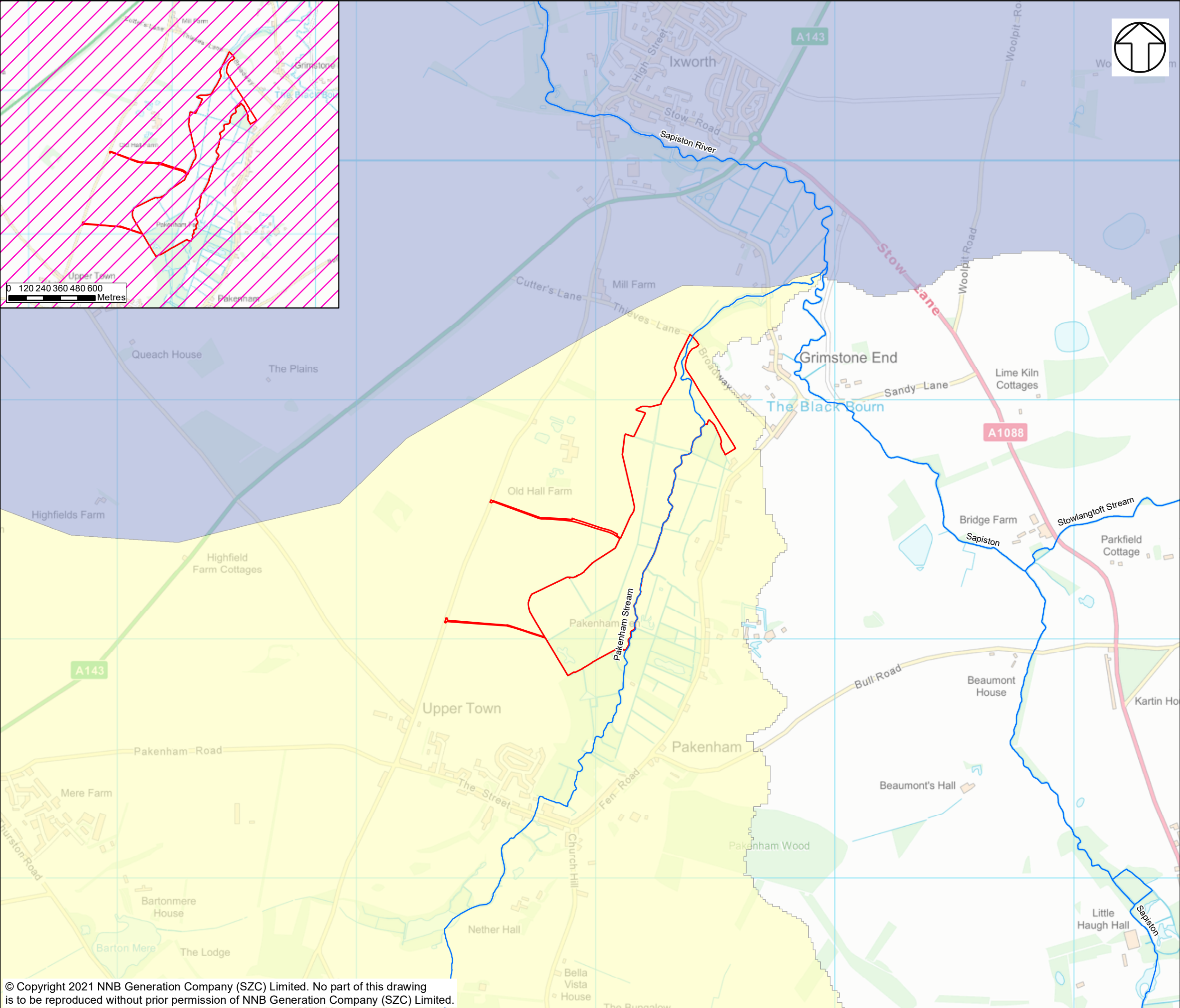
Revision: 1.0
Applicable Regulation: Regulation 5(2)(q)
PINS Reference Number: EN010012

January 2021

Planning Act 2008
Infrastructure Planning (Applications: Prescribed
Forms and Procedure) Regulations 2009



FIGURE 2.1: PAKENHAM FEN MEADOW HABITAT CREATION - WFD WATER BODIES



NOTES

KEY

- FEN MEADOW HABITAT DEVELOPMENT SITE BOUNDARY
- PAKENHAM STREAM WFD RIVER WATER BODY CATCHMENT
- SAPISTON RIVER WFD RIVER WATER BODY CATCHMENT
- WFD RIVER CANAL AND SURFACE WATER TRANSFER WATER BODIES
- CAM AND ELY OUSE CHALK WFD GROUND WATER BODY

NOT PROTECTIVELY MARKED

COPYRIGHT
Reproduced from Ordnance Survey map with the permission of Ordnance Survey on behalf of the controller of Her Majesty's Stationary Office © Crown Copyright (2019). All Rights reserved. NNB GenCo 0100060408.



DOCUMENT:
SIZEWELL C
WFD COMPLIANCE ASSESSMENT: ADDENDUM
VOLUME X
CHAPTER 2
WFD COMPLIANCE OF PROPOSED DESIGN
CHANGES

DRAWING TITLE:
PAKENHAM FEN MEADOW HABITAT CREATION -
WFD WATER BODIES

DRAWING NO:
FIGURE 2.1

DATE: JAN 2021 DRAWN: J.T. SCALE: 1:15,000 @A3 REVISION: 2.0

SCALE BAR
0 100 200 300 400 500
Metres

FIGURE 3.1: PROPOSED FEN MEADOW COMPENSATION SITES

