



The Sizewell C Project

6.3 Volume 2 Main Development Site Chapter 12 Air Quality Figures 12.1 - 12.2

Revision: 2.0
Applicable Regulation: Regulation 5(2)(a)
PINS Reference Number: EN010012

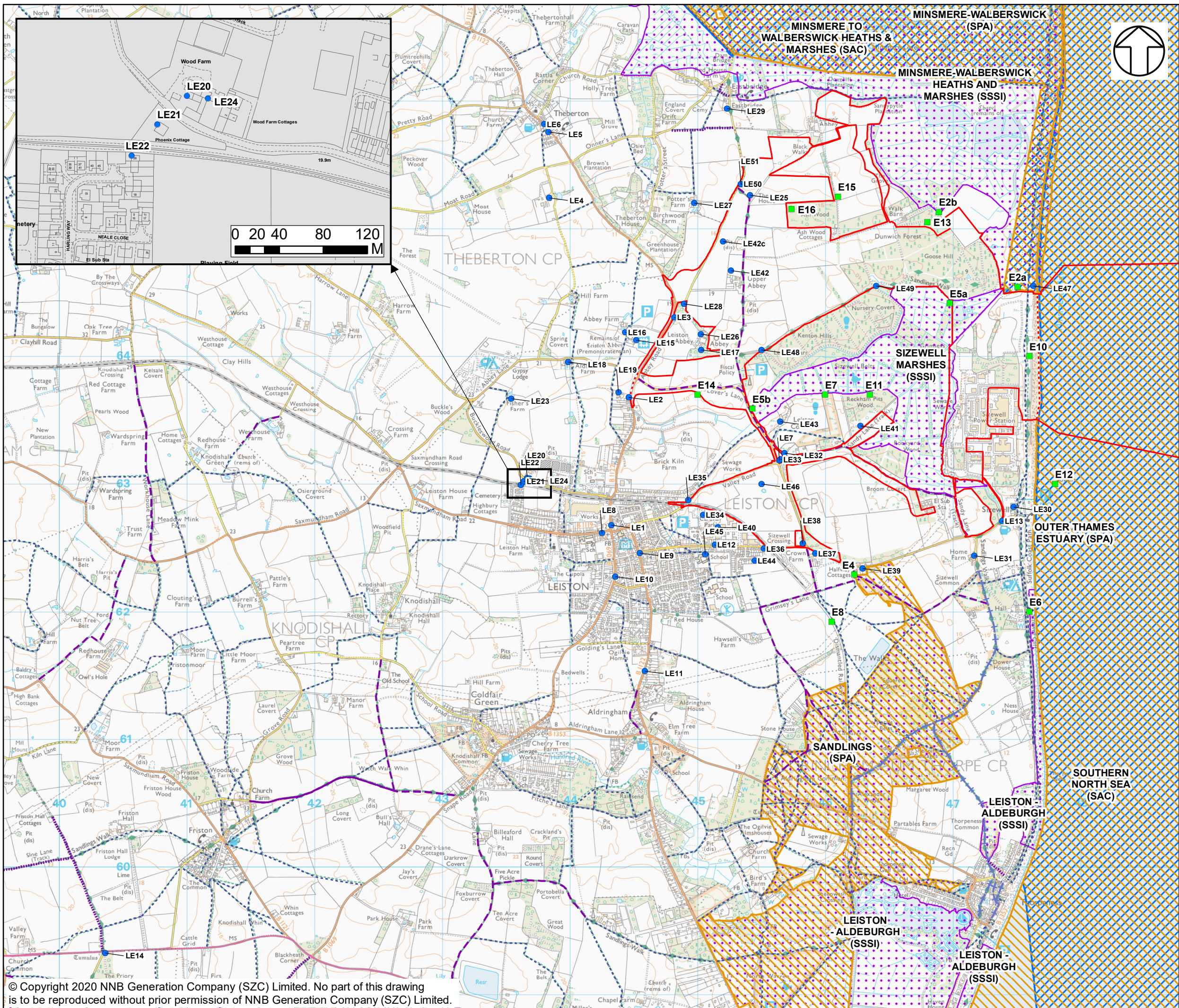
November 2020

Planning Act 2008
Infrastructure Planning (Applications: Prescribed
Forms and Procedure) Regulations 2009



Revision history / Record of comments

Revision	Amendment	By	Date
01	Original version [APP-215]	SZC Co.	May 2020
02	Figure 12.1 – Errors to labelling corrected Figure 12.2 – No change	SZC Co.	November 2020



NOTES

KEY

- SIZEWELL C MAIN DEVELOPMENT SITE BOUNDARY
- DEMARCATION LINE
- AIR QUALITY HUMAN HEALTH RECEPTOR
- AIR QUALITY ECOLOGICAL RECEPTOR, CONSTRUCTION DUST
- SPECIAL PROTECTION AREA
- SITE OF SPECIAL SCIENTIFIC INTEREST (SSSI)
- SPECIAL AREA OF CONSERVATION
- PUBLIC RIGHT OF WAY (SUFFOLK COUNTY)
- FOOTPATH
- BRIDLEWAY
- BYWAY
- RESTRICTED BYWAY

NOT PROTECTIVELY MARKED

COPYRIGHT
Reproduced from Ordnance Survey map with the permission of Stationery Office © Crown Copyright (2019). All Rights reserved. NNB GenCo 0100060408.
© Natural England material is reproduced with the permission of Natural England 2019
PROW data sourced from Suffolk CC on 27/02/2019 under OGL v3.0 are an interpretation of the Definitive Map and Statement, not the Definitive Map itself, and should not be relied on for determining the position or alignment of any public right of way. The data contains Ordnance Survey data © Crown copyright and database right 2019.



DOCUMENT:
SIZEWELL C
ENVIRONMENTAL STATEMENT
VOLUME 2
CHAPTER 12
AIR QUALITY

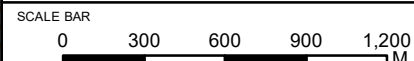
DRAWING TITLE:
MAIN DEVELOPMENT SITE
AIR QUALITY REPRESENTATIVE RECEPTOR
LOCATIONS

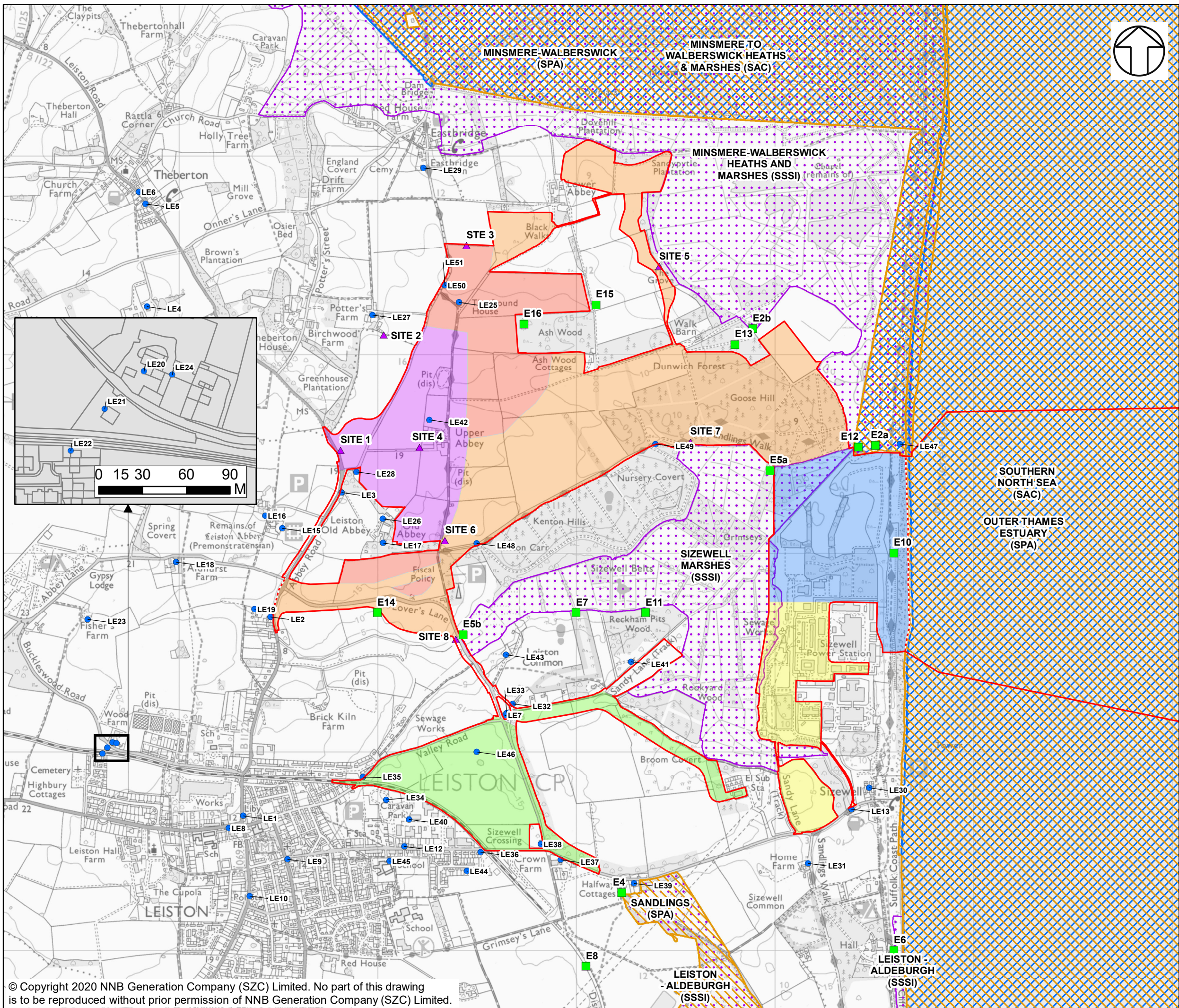
DRAWING NO:
FIGURE 12.1

DATE:
NOV 2020

DRAWN:
A.B.

SCALE:
1:28,000 @A3





NOTES

KEY

- SIZEWELL C MAIN DEVELOPMENT SITE BOUNDARY
- DEMARCATION LINE
- AIR QUALITY HUMAN HEALTH RECEPTOR
- AIR QUALITY ECOLOGICAL RECEPTOR
- DUST MONITORING LOCATIONS
- CONSTRUCTION ZONE A
- CONSTRUCTION ZONE B
- CONSTRUCTION ZONE C
- CONSTRUCTION ZONE D
- CONSTRUCTION ZONE E
- CONSTRUCTION ZONE F
- SPECIAL PROTECTION AREA (SPA)
- SPECIAL AREA OF CONSERVATION (SAC)
- SITE OF SPECIAL SCIENTIFIC INTEREST (SSSI)

NOT PROTECTIVELY MARKED

COPYRIGHT
Reproduced from Ordnance Survey map with the permission of Ordnance Survey on behalf of the controller of Her Majesty's Stationary Office © Crown Copyright (2019). All Rights reserved. NNB GenCo 0100060408.
© Natural England material is reproduced with the permission of Natural England 2019



DOCUMENT:
SIZEWELL C
ENVIRONMENTAL STATEMENT
VOLUME 2
APPENDIX 12A
CONSTRUCTION DUST ASSESSMENT

DRAWING TITLE:
MAIN DEVELOPMENT SITE CONSTRUCTION ZONES
ILLUSTRATIVE - FOR INFORMATION

DRAWING NO:
FIGURE 12.2

DATE: JAN 2020 **DRAWN:** A.B. **SCALE:** 1:18,000 @A3

