



The Sizewell C Project

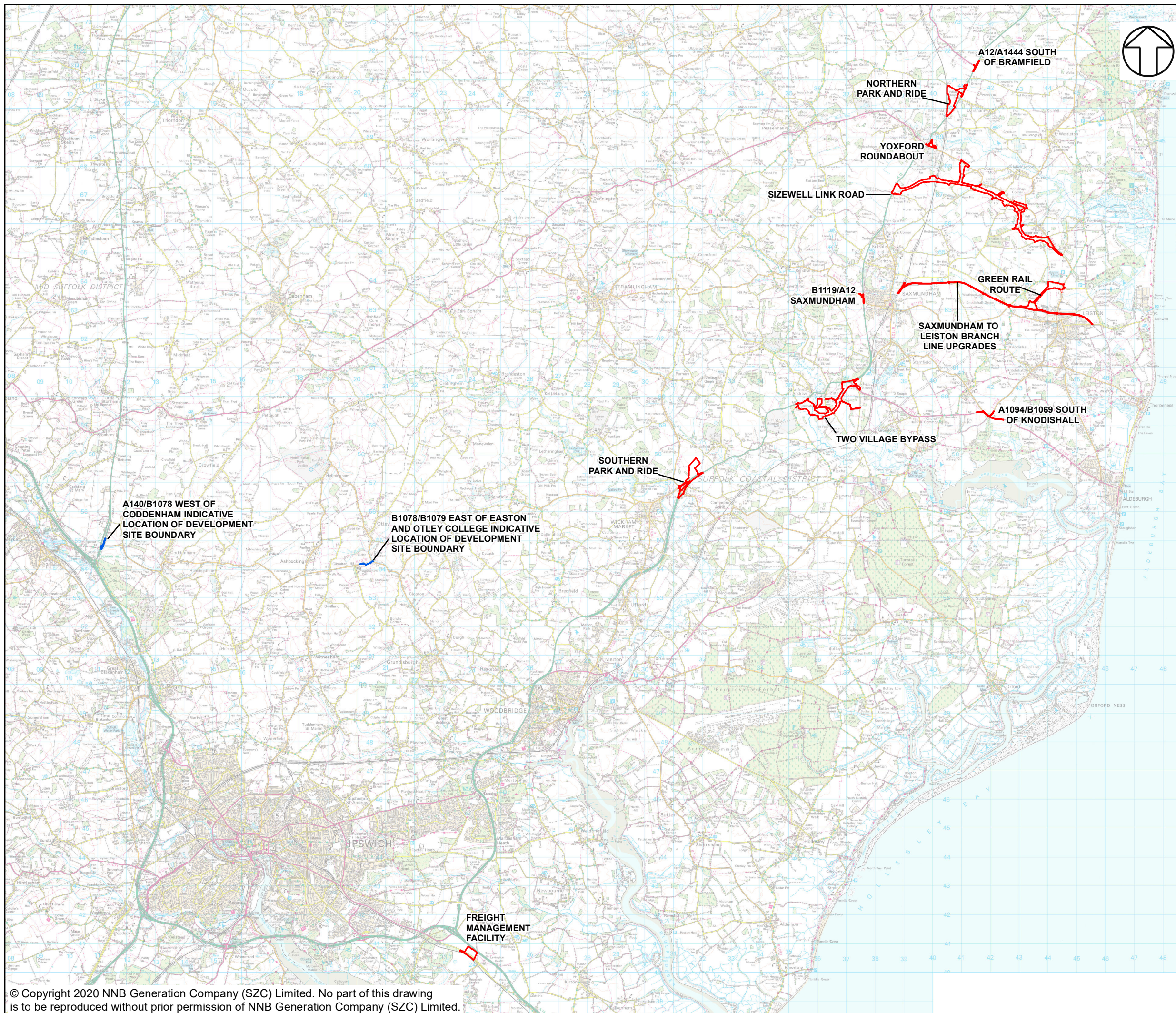
8.14 Water Framework Directive Compliance Assessment Report Part 3 Figures 3.1 to 3.22 - Part 1 of 2

Revision: 1.0
Applicable Regulation: Regulation 5(2)(q)
PINS Reference Number: EN010012

May 2020

Planning Act 2008
Infrastructure Planning (Applications: Prescribed
Forms and Procedure) Regulations 2009





NOTES

KEY

- ASSOCIATED DEVELOPMENT SITE BOUNDARIES
- INDICATIVE LOCATION OF DEVELOPMENT SITE BOUNDARIES

NOT PROTECTIVELY MARKED

COPYRIGHT
 Reproduced from Ordnance Survey map with the permission of Ordnance Survey on behalf of the controller of Her Majesty's Stationary Office © Crown Copyright (2019). All Rights reserved. NNB GenCo 0100060408.

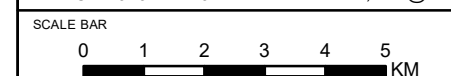


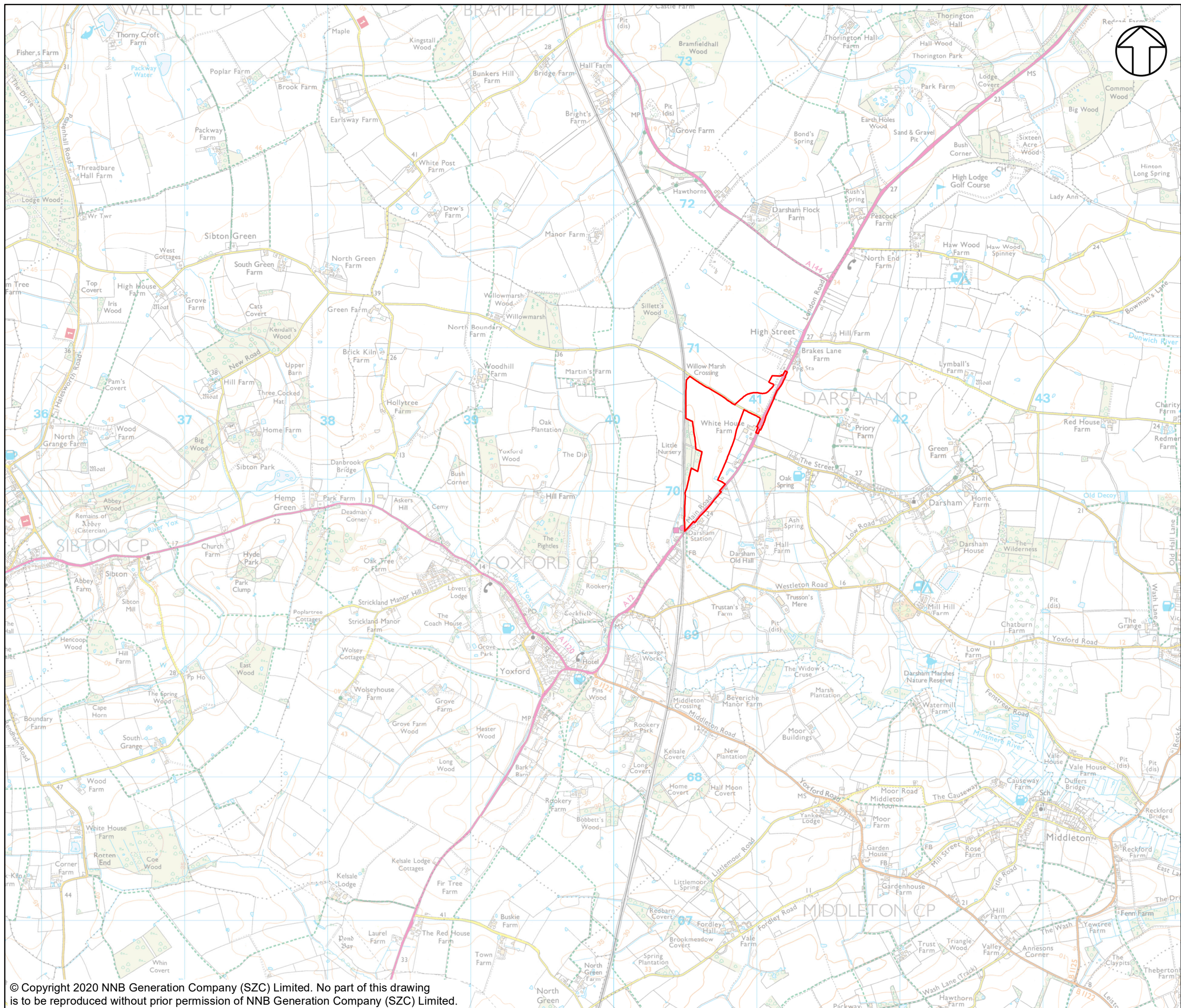
DOCUMENT:
 SIZEWELL C
 WFD COMPLIANCE ASSESSMENT
 PART 3: ASSOCIATED DEVELOPMENT SITES
 OVERVIEW OF ASSOCIATED DEVELOPMENT

DRAWING TITLE:
 ASSOCIATED DEVELOPMENT SITES

DRAWING NO:
 FIGURE 3.1


DATE: MARCH 2020 **DRAWN:** J.T. **SCALE:** 1:125,000 @A3





NOTES

KEY

 NORTHERN PARK AND RIDE DEVELOPMENT SITE BOUNDARY

NOT PROTECTIVELY MARKED

COPYRIGHT
 Reproduced from Ordnance Survey map with the permission of Ordnance Survey on behalf of the controller of Her Majesty's Stationery Office © Crown Copyright (2019). All Rights reserved. NNB GenCo 0100060408.

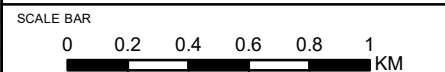


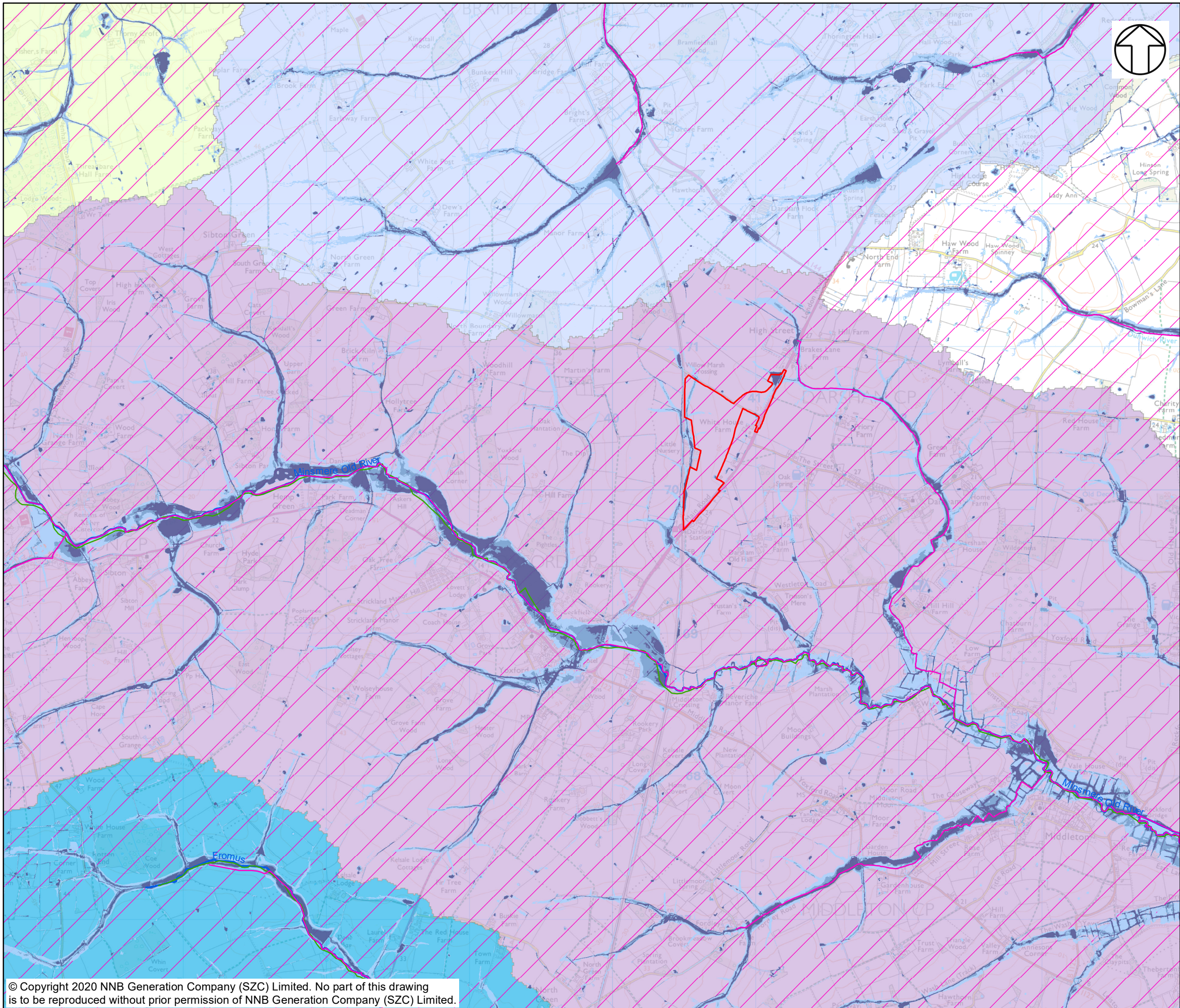
DOCUMENT:
 SIZEWELL C
 WFD COMPLIANCE ASSESSMENT
 PART 3: ASSOCIATED DEVELOPMENT SITES
 NORTHERN PARK AND RIDE

DRAWING TITLE:
 NORTHERN PARK AND RIDE LOCATION PLAN

DRAWING NO:
 FIGURE 3.2

DATE: MARCH 2020 **DRAWN:** J.T. **SCALE:** 1:25,000 @A3





NOTES

KEY

- NORTHERN PARK AND RIDE DEVELOPMENT SITE BOUNDARY
- WFD RIVER CANAL AND SURFACE WATER TRANSFER WATER BODIES
- WFD RIVER WATER BODIES
- MAIN RIVERS

WFD RIVER WATER BODY CATCHMENTS

- BLYTH (HEVINGHAM HALL - D/S HALESWORTH)
- FROMUS
- MINSMERE OLD RIVER
- WENHASTON WATERCOURSE

WFD GROUNDWATER CATCHMENTS

- WAVENEY AND EAST SUFFOLK CHALK AND CRAG

ENVIRONMENT AGENCY RISK OF SURFACE WATER FLOODING

- HIGH RISK (GREATER THAN 1 IN 30 ANNUAL PROBABILITY OF FLOODING)
- MEDIUM RISK (BETWEEN 1 IN 100 AND 1 IN 30 ANNUAL PROBABILITY OF FLOODING)
- LOW RISK (BETWEEN 1 IN 1,000 AND 1 IN 100 ANNUAL PROBABILITY OF FLOODING)
- VERY LOW RISK (LESS THAN 1 IN 1,000 ANNUAL PROBABILITY OF FLOODING)

NOT PROTECTIVELY MARKED

COPYRIGHT
 Reproduced from Ordnance Survey map with the permission of Ordnance Survey on behalf of the controller of Her Majesty's Stationery Office © Crown Copyright (2019). All Rights reserved. NNB GenCo 0100060408.
 © Environment Agency, 2019.

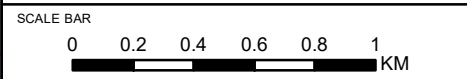


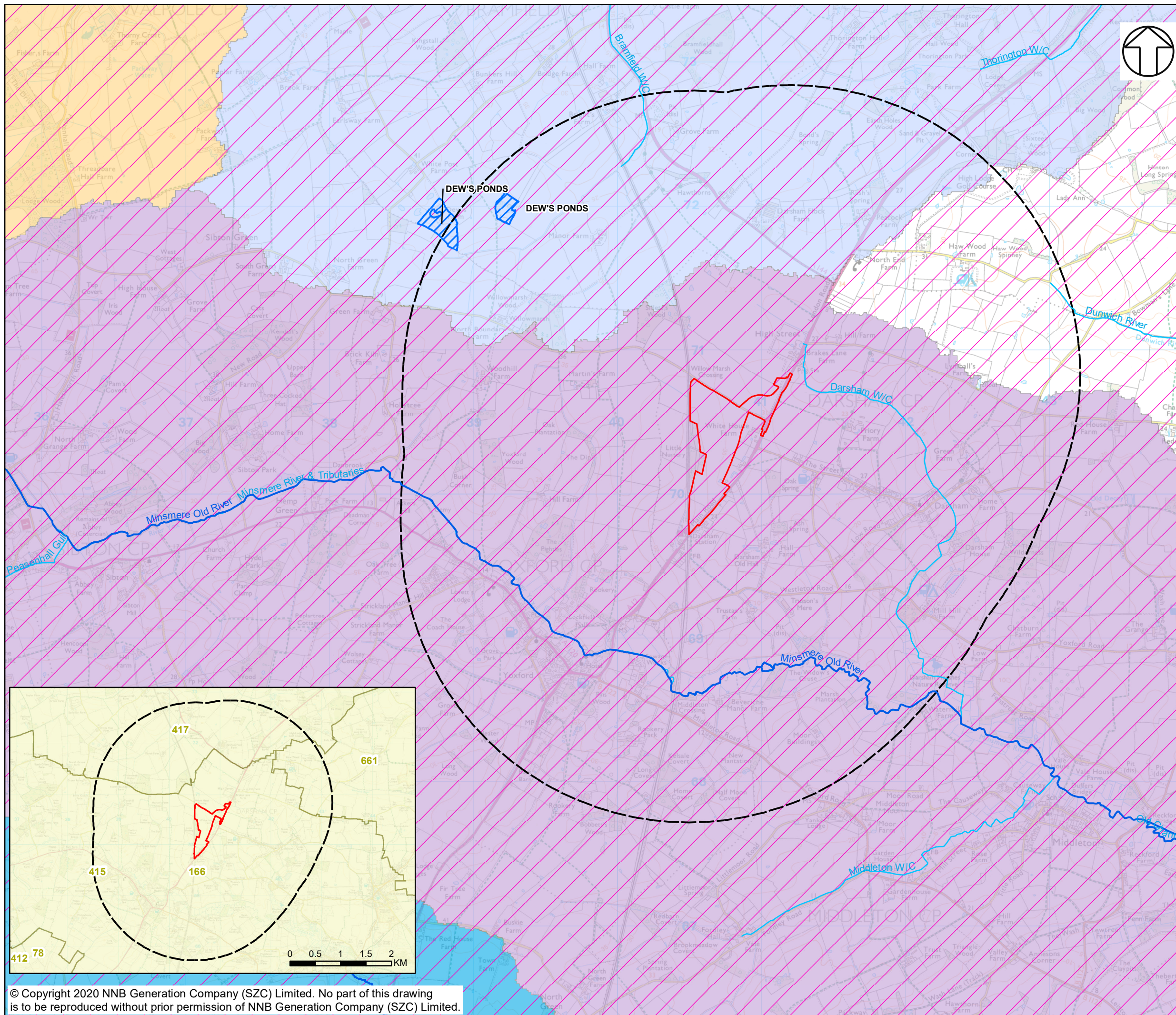
DOCUMENT:
 SIZEWELL C
 WFD COMPLIANCE ASSESSMENT
 PART 3: ASSOCIATED DEVELOPMENT SITES
 NORTHERN PARK AND RIDE

DRAWING TITLE:
 NORTHERN PARK AND RIDE WFD WATER BODIES

DRAWING NO:
 FIGURE 3.3

DATE: MARCH 2020 **DRAWN:** J.T. **SCALE:** 1:25,000 @A3





NOTES

KEY

- NORTHERN PARK AND RIDE DEVELOPMENT SITE BOUNDARY
- 2KM BUFFER
- WFD RIVER CANAL AND SURFACE WATER TRANSFER WATER BODIES
- MAIN RIVERS
- NITRATE VULNERABLE ZONES
- DESIGNATIONS
- SPECIAL AREA OF CONSERVATION (SAC)
- WFD RIVER WATER BODY CATCHMENTS**
- BLYTH (HEVINGHAM HALL - D/S HALESWORTH)
- FROMUS
- MINSMERE OLD RIVER
- WENHASTON WATERCOURSE
- WFD GROUNDWATER CATCHMENTS**
- WAVENEY AND EAST SUFFOLK CHALK AND CRAG

PROTECTED AREAS WITHIN 2 KM BUFFER
 - WFD GROUNDWATER OPERATIONAL CATCHMENT: WAVENEY AND EAST SUFFOLK CHALK AND CRAG
 - WFD RIVER WATER BODY CATCHMENTS: MINSMERE OLD RIVER & WENHASTON
 - NVZ: 166, 415, 417 & 661.
 - SAC: DEW'S POND

NOT PROTECTIVELY MARKED

COPYRIGHT

Reproduced from Ordnance Survey map with the permission of Ordnance Survey on behalf of the controller of Her Majesty's Stationery Office © Crown Copyright (2019). All Rights reserved. NNB GenCo 0100060408.
 © Environment Agency, 2019; Natural England, © Natural England material is reproduced with the permission of Natural England 2019.

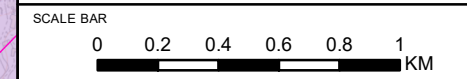


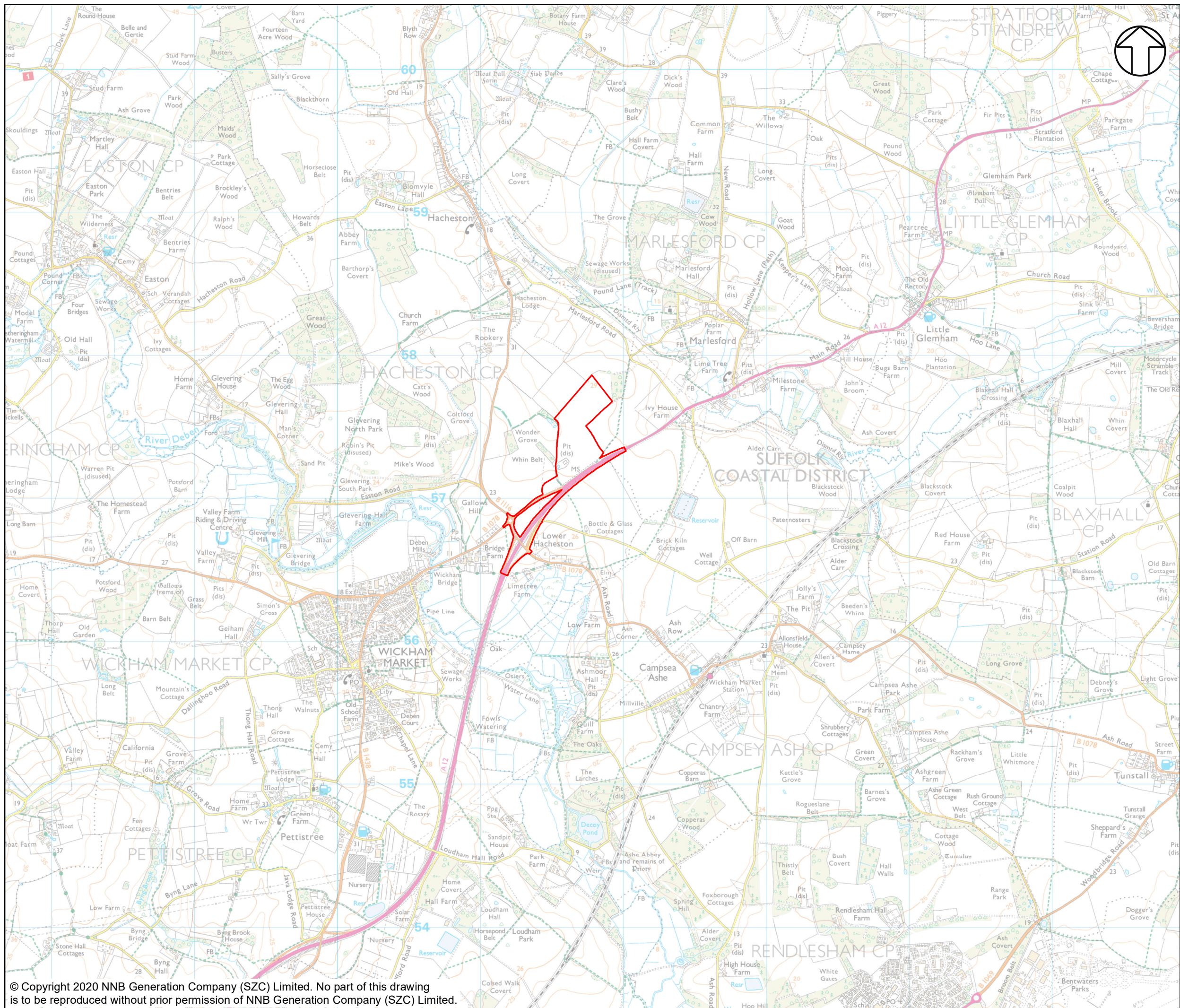
DOCUMENT:
 SIZEWELL C
 WFD COMPLIANCE ASSESSMENT
 PART 3: ASSOCIATED DEVELOPMENT SITES
 NORTHERN PARK AND RIDE

DRAWING TITLE:
 NORTHERN PARK AND RIDE PROTECTED AREAS

DRAWING NO:
 FIGURE 3.4

DATE: MARCH 2020 **DRAWN:** J.T. **SCALE:** 1:25,000 @A3





NOTES

KEY

 SOUTHERN PARK AND RIDE DEVELOPMENT SITE BOUNDARY

NOT PROTECTIVELY MARKED

COPYRIGHT
 Reproduced from Ordnance Survey map with the permission of Ordnance Survey on behalf of the controller of Her Majesty's Stationery Office © Crown Copyright (2019). All Rights reserved. NNB GenCo 0100060408.

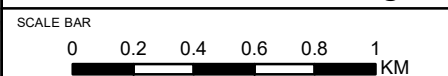


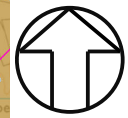
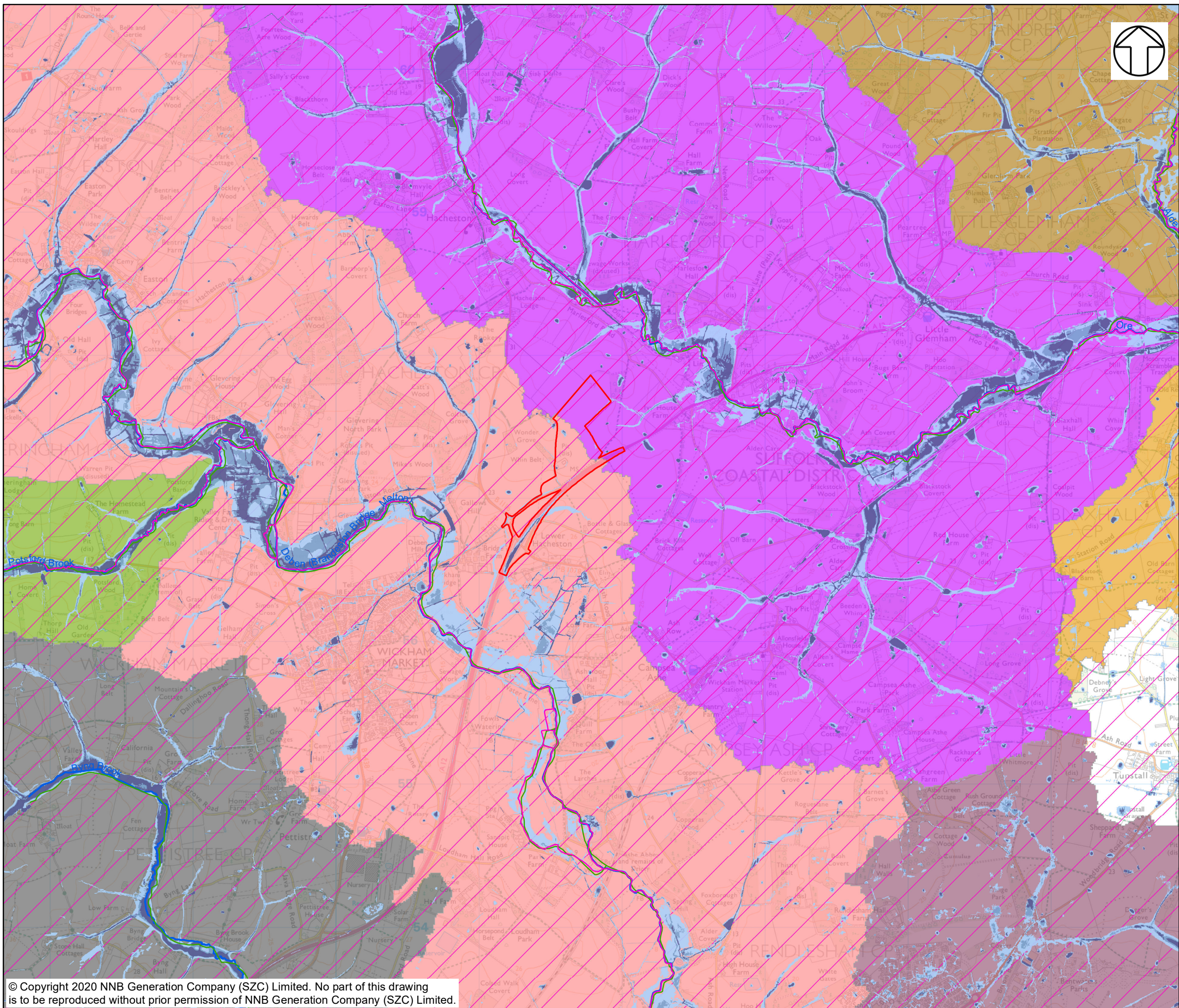
DOCUMENT:
 SIZEWELL C
 WFD COMPLIANCE ASSESSMENT
 PART 3: ASSOCIATED DEVELOPMENT SITES
 SOUTHERN PARK AND RIDE

DRAWING TITLE:
 SOUTHERN PARK AND RIDE LOCATION PLAN

DRAWING NO:
 FIGURE 3.5

DATE: MARCH 2020 DRAWN: J.T. SCALE: 1:25,000 @A3





NOTES

KEY

- SOUTHERN PARK AND RIDE DEVELOPMENT SITE BOUNDARY
- WFD RIVER CANAL AND SURFACE WATER TRANSFER WATER BODIES
- WFD RIVER WATER BODIES
- MAIN RIVERS
- WFD RIVER WATER BODY CATCHMENTS**
- ALDE
- ALDE - ORE (D/S CONFLUENCE)
- BUTLEY RIVER
- BYNG BROOK
- DEBEN (BRANDESTON BRIDGE - MELTON)
- ORE
- POTSFORD BROOK
- WFD GROUNDWATER CATCHMENTS**
- WAVENEY AND EAST SUFFOLK CHALK AND CRAG
- ENVIRONMENT AGENCY RISK OF SURFACE WATER FLOODING**
- HIGH RISK (GREATER THAN 1 IN 30 ANNUAL PROBABILITY OF FLOODING)
- MEDIUM RISK (BETWEEN 1 IN 100 AND 1 IN 30 ANNUAL PROBABILITY OF FLOODING)
- LOW RISK (BETWEEN 1 IN 1,000 AND 1 IN 100 ANNUAL PROBABILITY OF FLOODING)
- VERY LOW RISK (LESS THAN 1 IN 1,000 ANNUAL PROBABILITY OF FLOODING)

NOT PROTECTIVELY MARKED

COPYRIGHT

Reproduced from Ordnance Survey map with the permission of Ordnance Survey on behalf of the controller of Her Majesty's Stationery Office © Crown Copyright (2019). All Rights reserved. NNB GenCo 0100060408. © Environment Agency, 2019.

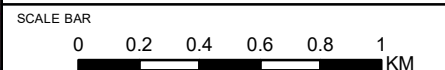


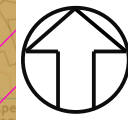
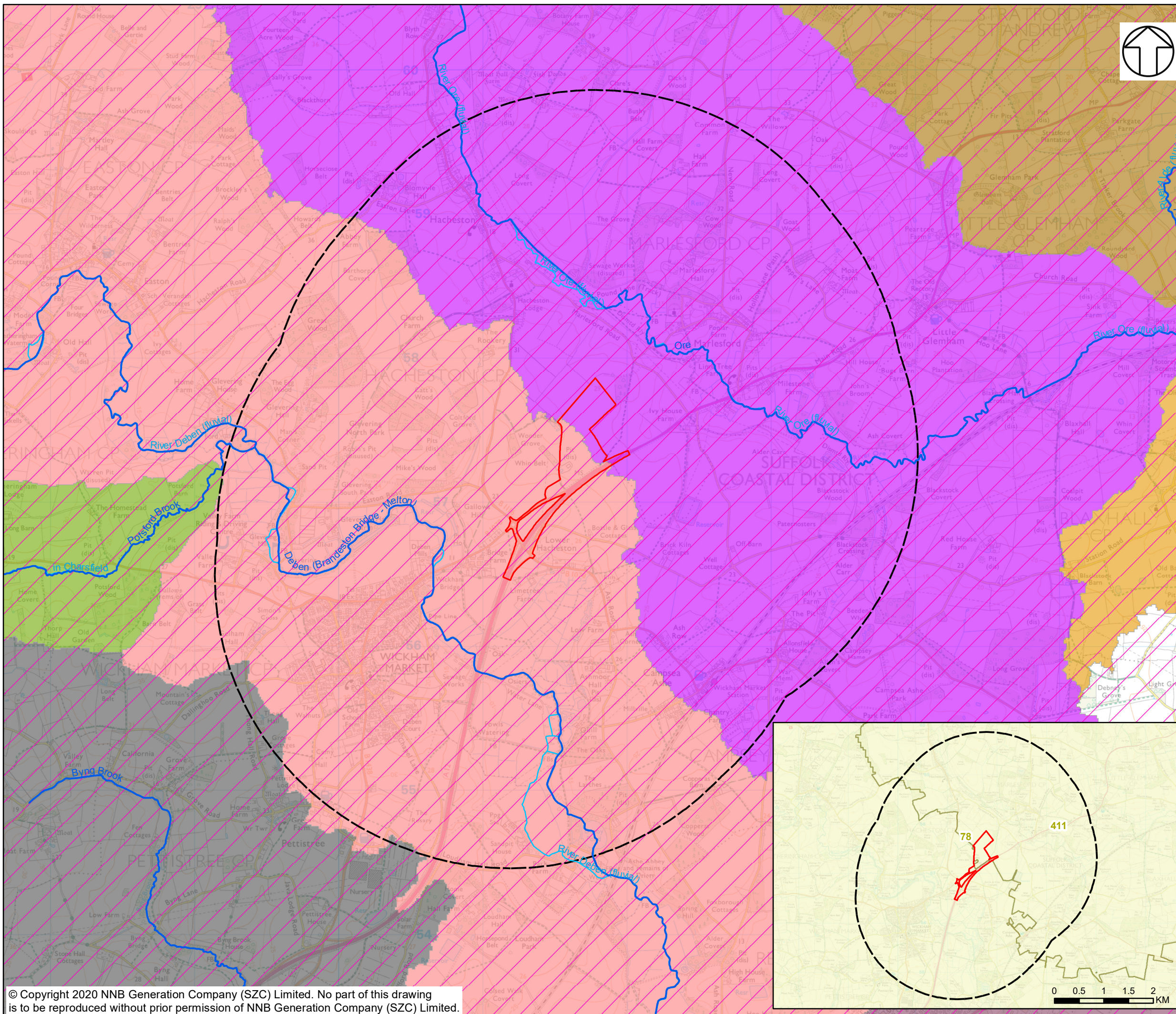
DOCUMENT:
 SIZEWELL C
 WFD COMPLIANCE ASSESSMENT
 PART 3: ASSOCIATED DEVELOPMENT SITES
 SOUTHERN PARK AND RIDE

DRAWING TITLE:
 SOUTHERN PARK AND RIDE WFD WATER BODIES

DRAWING NO:
 FIGURE 3.6

DATE: MARCH 2020 DRAWN: J.T. SCALE: 1:25,000 @A3





NOTES

KEY

- SOUTHERN PARK AND RIDE DEVELOPMENT SITE BOUNDARY
- NITRATE VULNERABLE ZONES
- 2KM BUFFER
- WFD RIVER CANAL AND SURFACE WATER TRANSFER WATER BODIES
- MAIN RIVERS
- WFD RIVER WATER BODY CATCHMENTS**
- ALDE
- ALDE - ORE (D/S CONFLUENCE)
- BUTLEY RIVER
- BYNG BROOK
- DEBEN (BRANDESTON BRIDGE - MELTON)
- ORE
- POTSFORD BROOK
- WFD GROUNDWATER CATCHMENTS**
- WAVENEY AND EAST SUFFOLK CHALK AND CRAG

PROTECTED AREAS WITHIN 2 KM BUFFER
 - WFD GROUNDWATER OPERATIONAL CATCHMENT: WAVENEY AND EAST SUFFOLK CHALK AND CRAG
 - WFD RIVER WATER BODY CATCHMENT: DEBEN, ORE & BYNG BROOK
 - NVZ: 78 & 411.

NOT PROTECTIVELY MARKED

COPYRIGHT

Reproduced from Ordnance Survey map with the permission of Ordnance Survey on behalf of the controller of Her Majesty's Stationary Office © Crown Copyright (2019). All Rights reserved. NNB GenCo 0100060408.
 © Environment Agency, 2019; Natural England, © Natural England material is reproduced with the permission of Natural England 2019.

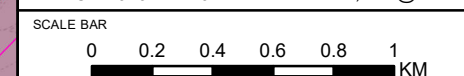


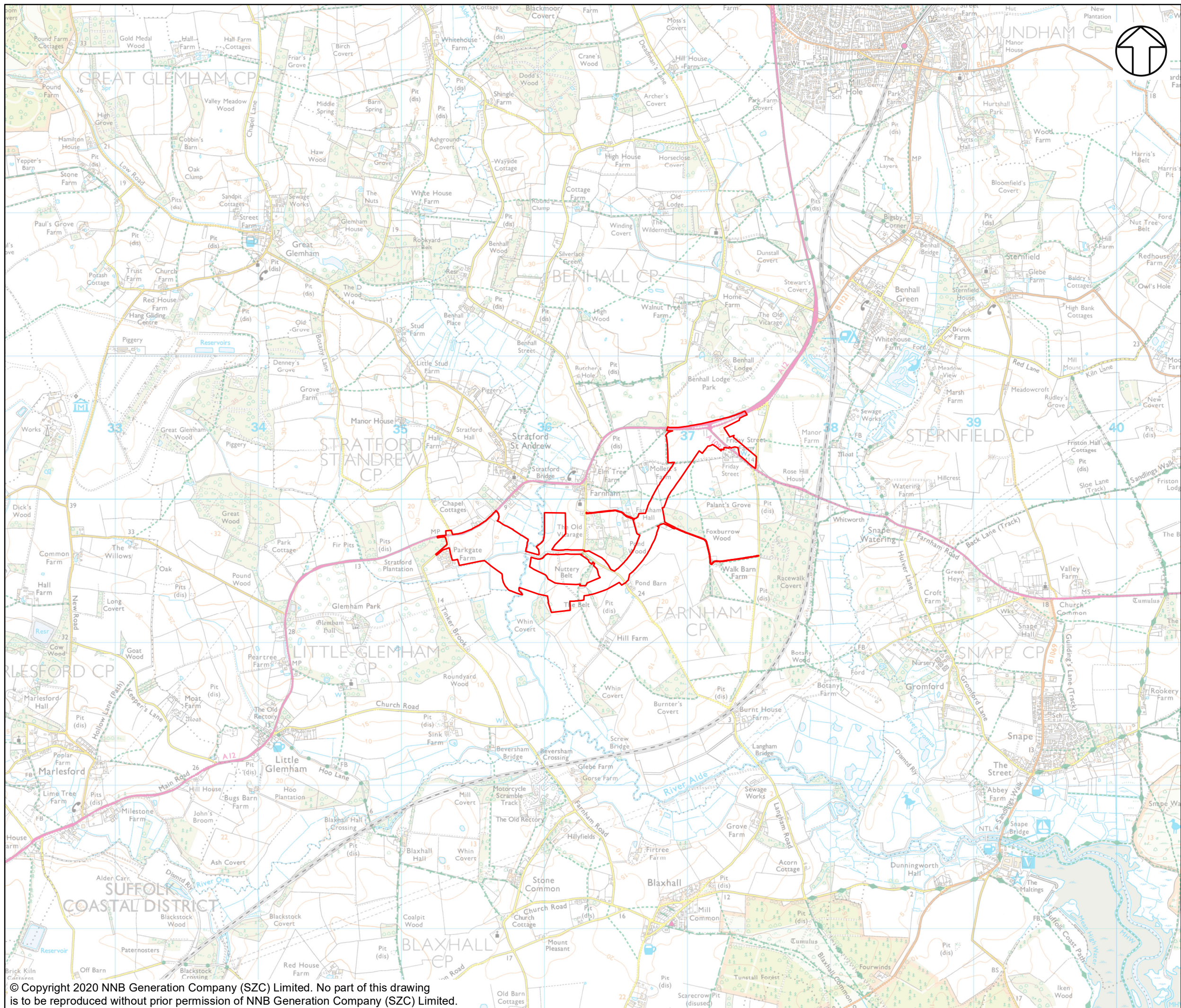
DOCUMENT:
 SIZEWELL C
 WFD COMPLIANCE ASSESSMENT
 PART 3: ASSOCIATED DEVELOPMENT SITES
 SOUTHERN PARK AND RIDE

DRAWING TITLE:
 SOUTHERN PARK AND RIDE PROTECTED AREAS

DRAWING NO:
 FIGURE 3.7


DATE: MARCH 2020 **DRAWN:** J.T. **SCALE:** 1:25,000 @A3





NOTES

KEY

 TWO VILLAGE BYPASS DEVELOPMENT SITE BOUNDARY

NOT PROTECTIVELY MARKED

COPYRIGHT
 Reproduced from Ordnance Survey map with the permission of Ordnance Survey on behalf of the controller of Her Majesty's Stationery Office © Crown Copyright (2019). All Rights reserved. NNB GenCo 0100060408.

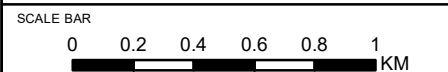


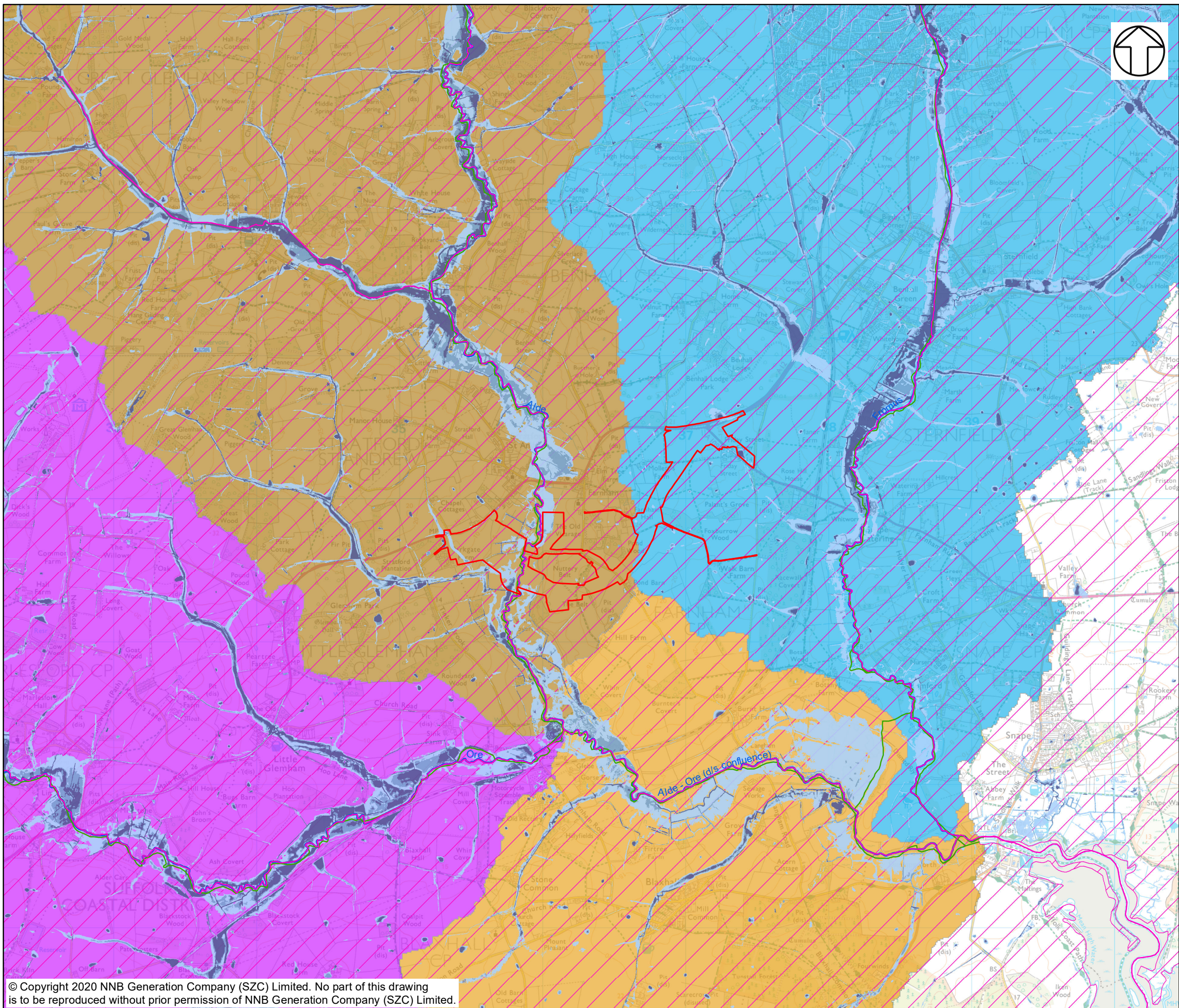
DOCUMENT:
 SIZEWELL C
 WFD COMPLIANCE ASSESSMENT
 PART 3: ASSOCIATED DEVELOPMENT SITES
 TWO VILLAGE BYPASS

DRAWING TITLE:
 TWO VILLAGE BYPASS LOCATION PLAN

DRAWING NO:
 FIGURE 3.8

DATE: MARCH 2020 DRAWN: J.T. SCALE: 1:25,000 @A3





NOTES

KEY

- TWO VILLAGE BYPASS DEVELOPMENT SITE BOUNDARY
- WFD RIVER CANAL AND SURFACE WATER TRANSFER WATER BODIES
- WFD RIVER WATER BODIES
- MAIN RIVERS

WFD RIVER WATER BODY CATCHMENTS

- ALDE
- ALDE - ORE (D/S CONFLUENCE)
- FROMUS
- ORE

WFD GROUNDWATER CATCHMENTS

- WAVENEY AND EAST SUFFOLK CHALK AND CRAG

ENVIRONMENT AGENCY RISK OF SURFACE WATER FLOODING

- HIGH RISK (GREATER THAN 1 IN 30 ANNUAL PROBABILITY OF FLOODING)
- MEDIUM RISK (BETWEEN 1 IN 100 AND 1 IN 30 ANNUAL PROBABILITY OF FLOODING)
- LOW RISK (BETWEEN 1 IN 1,000 AND 1 IN 100 ANNUAL PROBABILITY OF FLOODING)
- VERY LOW RISK (LESS THAN 1 IN 1,000 ANNUAL PROBABILITY OF FLOODING)

NOT PROTECTIVELY MARKED

COPYRIGHT

Reproduced from Ordnance Survey map with the permission of Ordnance Survey on behalf of the controller of Her Majesty's Stationery Office © Crown Copyright (2019). All Rights reserved. NNB GenCo 0100060408. © Environment Agency, 2019.



DOCUMENT:
 SIZEWELL C
 WFD COMPLIANCE ASSESSMENT
 PART 3: ASSOCIATED DEVELOPMENT SITES
 TWO VILLAGE BYPASS

DRAWING TITLE:
 TWO VILLAGE BYPASS WFD WATER BODIES

DRAWING NO:
 FIGURE 3.9

DATE: MARCH 2020 DRAWN: J.T. SCALE: 1:25,000 @A3

