



The Sizewell C Project

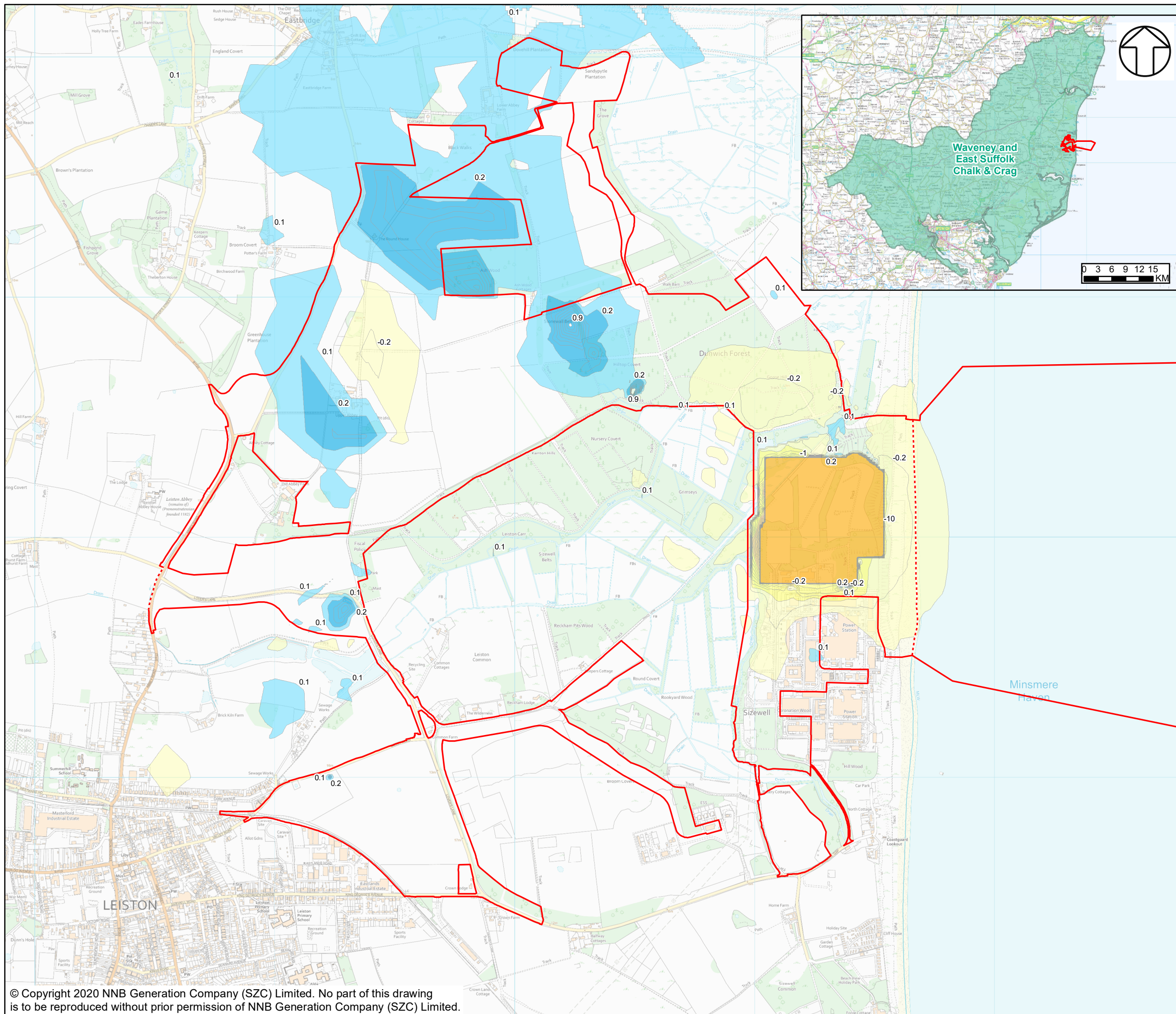
8.14 Water Framework Directive Compliance Assessment Report Part 2 Figures 2.1 to 2.32 - Part 2 of 3

Revision: 1.0
Applicable Regulation: Regulation 5(2)(q)
PINS Reference Number: EN010012

May 2020

Planning Act 2008
Infrastructure Planning (Applications: Prescribed
Forms and Procedure) Regulations 2009





NOTES

KEY

- SIZEWELL C MAIN DEVELOPMENT SITE BOUNDARY
- - - DEMARCATION LINE
- WAVENEY AND EAST SUFFOLK CHALK & CRAG WFD GROUND WATER BODY

CHANGE IN GWL CONSTRUCTION - BASELINE (M)

- <-10
- -10 to -1
- -1 to -0.2
- -0.2 to -0.1
- 0.1 to 0.2
- 0.2 to 0.9

NOT PROTECTIVELY MARKED

COPYRIGHT
 Reproduced from Ordnance Survey map with the permission of Ordnance Survey on behalf of the controller of Her Majesty's Stationary Office © Crown Copyright (2019). All Rights reserved. NNB GenCo 0100060408. Source: © Environment Agency, 2019. © CEFAS, 2019



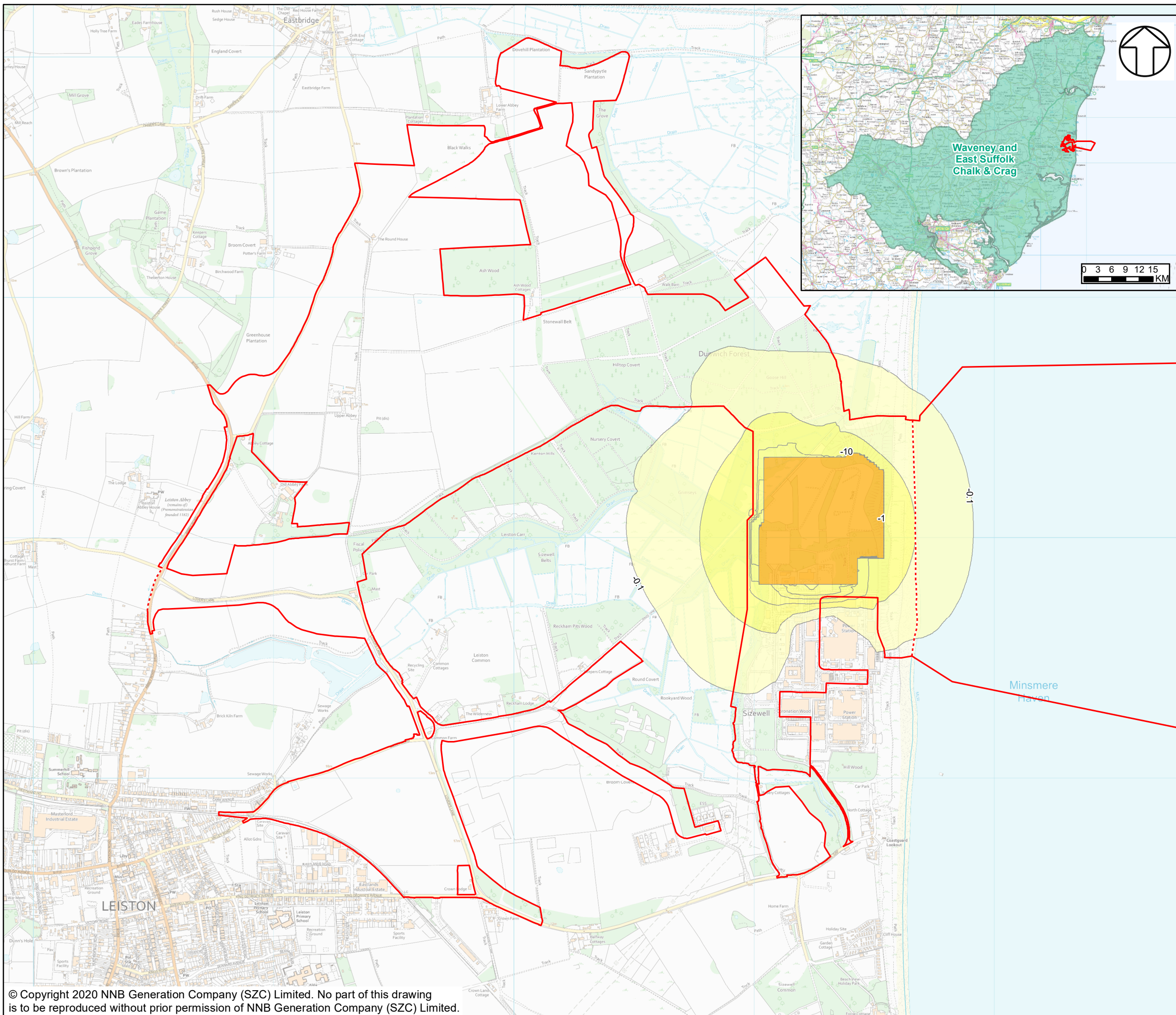
DOCUMENT:
 SIZEWELL C
 WFD COMPLIANCE ASSESSMENT
 PART 2: MAIN DEVELOPMENT SITE
 STAGE 3: FURTHER ASSESSMENT

DRAWING TITLE:
 MAXIMUM DRAWDOWN FOR PEAT DURING INTERMEDIATE SCENARIO

DRAWING NO:
 FIGURE 2.16

DATE: MARCH 2020 **DRAWN:** J.T. **SCALE:** 1:15,000 @A3

SCALE BAR
 0 100 200 300 400 500 Metres



NOTES

KEY

- SIZEWELL C MAIN DEVELOPMENT SITE BOUNDARY
- - - DEMARCATION LINE
- WAVENEY AND EAST SUFFOLK CHALK & CRAG WFD GROUND WATER BODY

CHANGE IN GWL CONSTRUCTION BASELINE (M)

- <-10
- 1 to -0.2
- 0.2 to -0.1

NOT PROTECTIVELY MARKED

COPYRIGHT
 Reproduced from Ordnance Survey map with the permission of Ordnance Survey on behalf of the controller of Her Majesty's Stationery Office © Crown Copyright (2019). All Rights reserved. NNB GenCo 0100060408.
 Source: © Environment Agency, 2019.
 © CEFAS, 2019



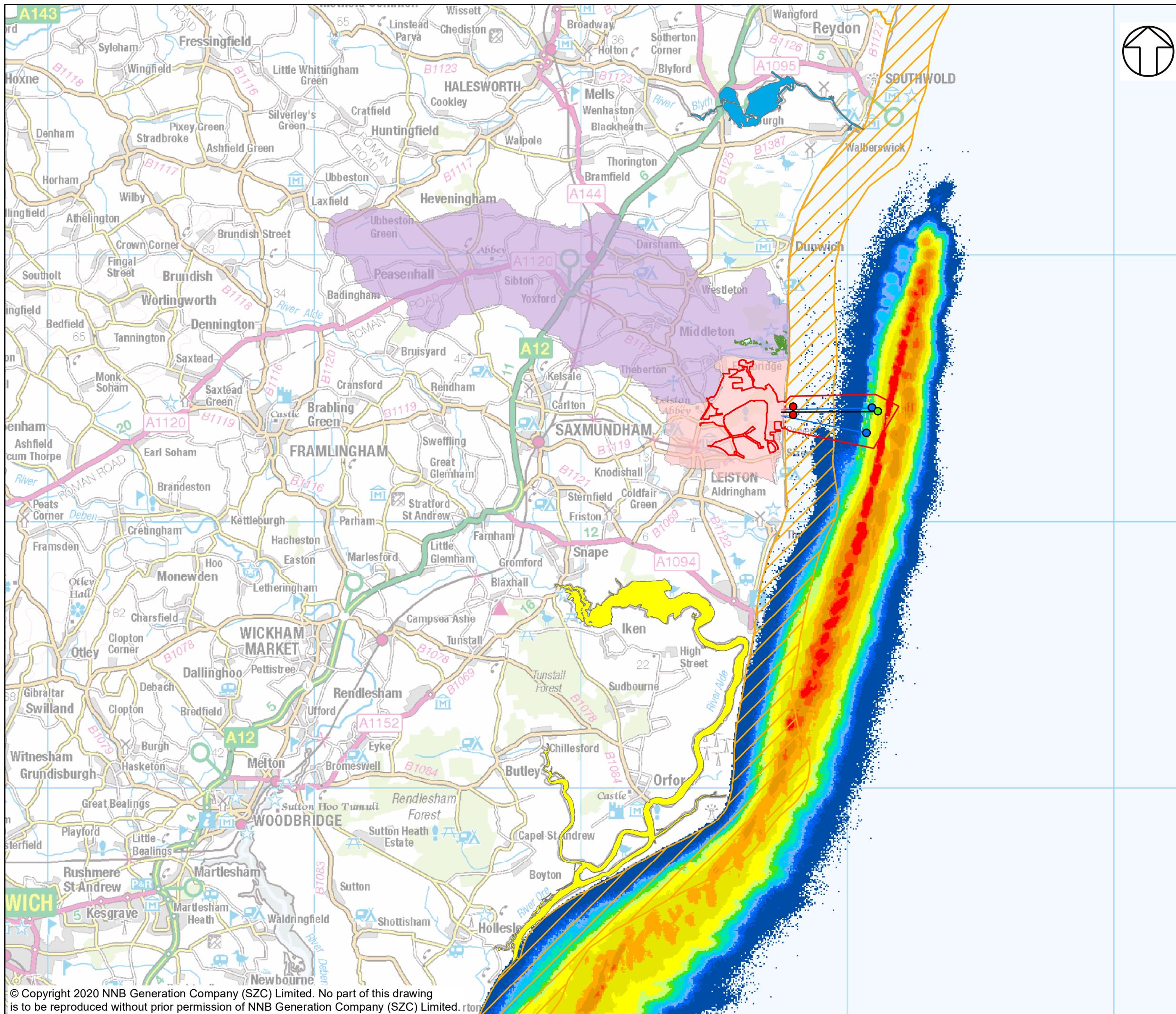
DOCUMENT:
 SIZEWELL C
 WFD COMPLIANCE ASSESSMENT
 PART 2: MAIN DEVELOPMENT SITE
 STAGE 3: FURTHER ASSESSMENT

DRAWING TITLE:
 MAXIMUM DRAWDOWN FOR CRAG
 DURING INTERMEDIATE SCENARIO

DRAWING NO.:
 FIGURE 2.17

DATE: MARCH 2020 **DRAWN:** J.T. **SCALE:** 1:15,000 @A3

SCALE BAR
 0 100 200 300 400 500 Metres



NOTES

KEY

- SIZEWELL C MAIN DEVELOPMENT SITE BOUNDARY
- - - DEMARCATION LINE
- INTAKE TUNNEL
- COOLING WATER OUTFALL TUNNEL
- FISH RECOVERY AND RETURN (FRR)
- COOLING WATER DISCHARGE OUTFALL LOCATION
- COOLING WATER INTAKE LOCATION
- FISH RECOVERY AND RETURN (FRR) OUTFALLS
- SUFFOLK WFD COASTAL WATER BODY
- WALBERSWICK MARSHES WFD COASTAL WATER BODY
- ALDE & ORE WFD TRANSITIONAL WATER BODY
- BLYTH (S) WFD TRANSITIONAL WATER BODY
- LEISTON BECK WFD RIVER WATER BODY CATCHMENT
- MINSMERE OLD RIVER WFD RIVER WATER BODY CATCHMENT

SSC (mg/l)

0 to 1	30 - 50
1 to 2	50 - 100
2 to 3	100 - 200
3 to 5	200 - 300
5 to 10	300 - 500
10 to 20	500 - 750
20 - 30	750 - 10000

NOT PROTECTIVELY MARKED

COPYRIGHT
 Reproduced from Ordnance Survey map with the permission of Ordnance Survey on behalf of the controller of Her Majesty's Stationery Office © Crown Copyright (2019). All Rights reserved. NNB GenCo 0100060408.
 © Environment Agency, 2019.

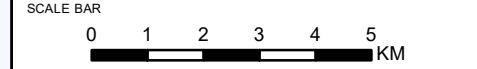


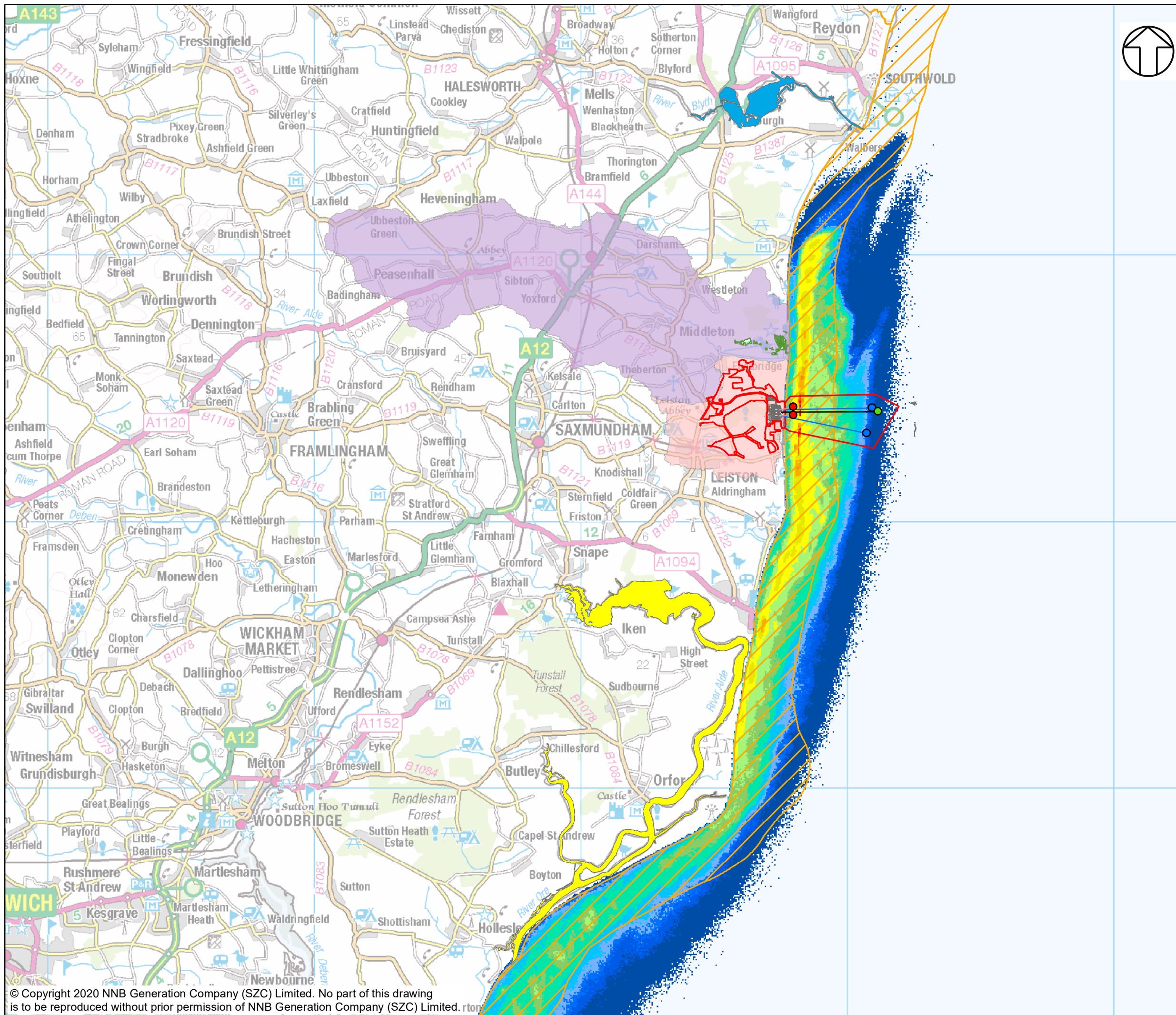
DOCUMENT:
 SIZEWELL C
 WFD COMPLIANCE ASSESSMENT
 PART 2: MAIN DEVELOPMENT SITE
 STAGE 3: FURTHER ASSESSMENT

DRAWING TITLE:
 EXAMPLE OF LOCATION MAXIMUM DEPTH AVERAGE SSC ASSOCIATED WITH DREDGING AT INTAKE ON NEAP TIDES

DRAWING NO:
 FIGURE 2.18

DATE: MARCH 2020 **DRAWN:** J.T. **SCALE:** 1:135,000 @A3





NOTES

KEY

- SIZEWELL C MAIN DEVELOPMENT SITE BOUNDARY
- - - DEMARCATION LINE
- INTAKE TUNNEL
- COOLING WATER OUTFALL TUNNEL
- FISH RECOVERY AND RETURN (FRR)
- COOLING WATER DISCHARGE OUTFALL LOCATION
- COOLING WATER INTAKE LOCATION
- FISH RECOVERY AND RETURN (FRR) OUTFALLS
- SUFFOLK WFD COASTAL WATER BODY
- WALBERSWICK MARSHES WFD COASTAL WATER BODY
- ALDE & ORE WFD TRANSITIONAL WATER BODY
- BLYTH (S) WFD TRANSITIONAL WATER BODY
- LEISTON BECK WFD RIVER WATER BODY CATCHMENT
- MINSMERE OLD RIVER WFD RIVER WATER BODY CATCHMENT

SSC (mg/l)

0 to 1	30 to 50
1 to 2	50 to 100
2 to 3	100 to 200
3 to 5	200 to 300
5 to 10	300 to 500
10 to 20	500 to 750
20 to 30	750 to 10000

NOT PROTECTIVELY MARKED

COPYRIGHT
 Reproduced from Ordnance Survey map with the permission of Ordnance Survey on behalf of the controller of Her Majesty's Stationery Office © Crown Copyright (2019). All Rights reserved. NNB GenCo 0100060408. © Environment Agency, 2019.

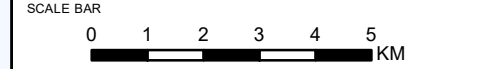


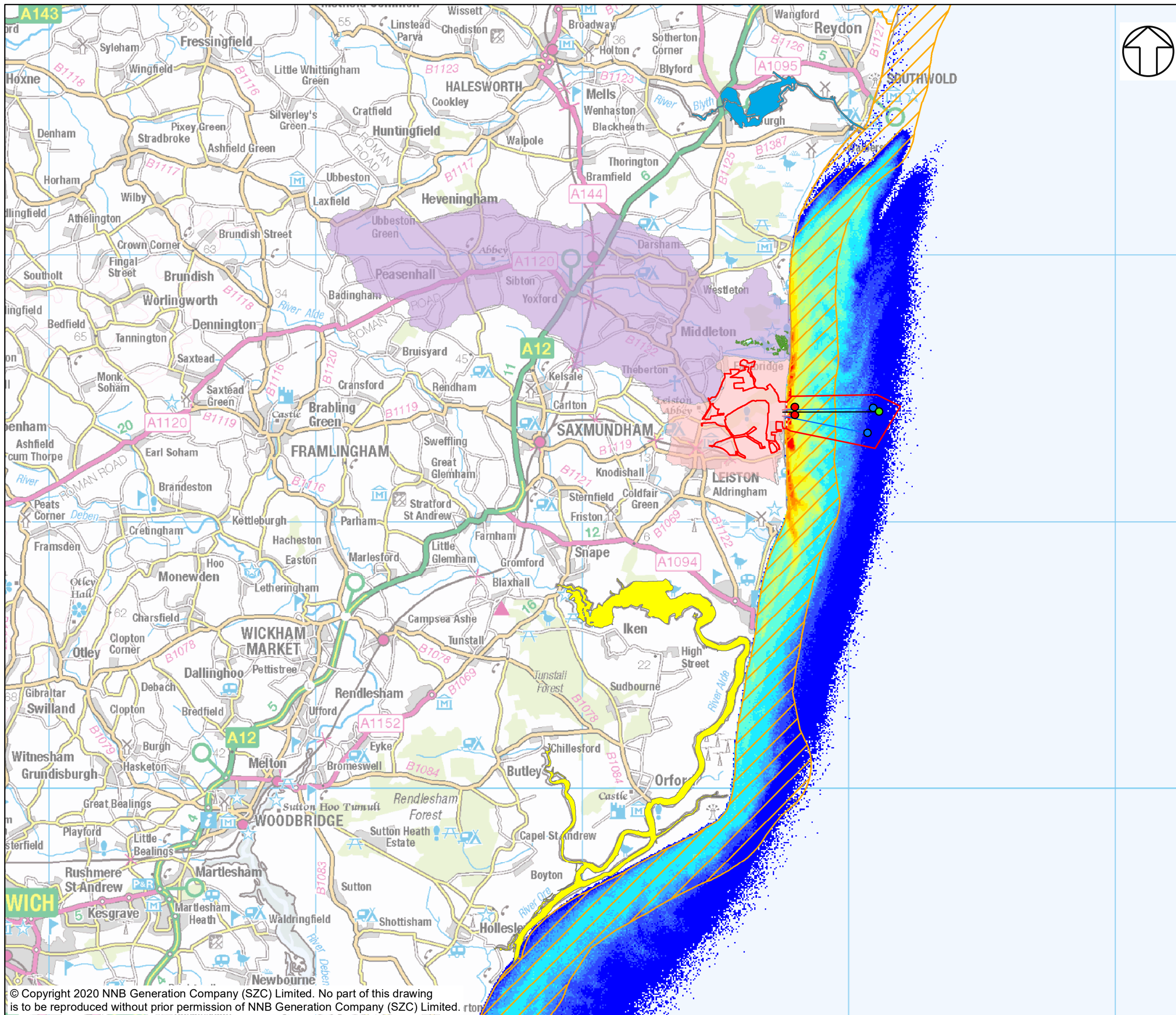
DOCUMENT:
 SIZEWELL C
 WFD COMPLIANCE ASSESSMENT
 PART 2: MAIN DEVELOPMENT SITE
 STAGE 3: FURTHER ASSESSMENT

DRAWING TITLE:
 EXAMPLE OF MAXIMUM AVERAGE DEPTH SSC ASSOCIATED WITH THE FRR AND CDO ON NEAP TIDES

DRAWING NO:
 FIGURE 2.19

DATE: MARCH 2020 **DRAWN:** J.T. **SCALE:** 1:135,000 @A3





NOTES

KEY

- SIZEWELL C MAIN DEVELOPMENT SITE BOUNDARY
- - - DEMARCATION LINE
- INTAKE TUNNEL
- COOLING WATER OUTFALL TUNNEL
- FISH RECOVERY AND RETURN
- COOLING WATER DISCHARGE OUTFALL LOCATION
- COOLING WATER INTAKE LOCATION
- FISH RECOVERY AND RETURN (FRR) OUTFALLS
- SUFFOLK WFD COASTAL WATER BODY
- WALBERSWICK MARSHES WFD COASTAL WATER BODY
- ALDE & ORE WFD TRANSITIONAL WATER BODY
- BLYTH (S) WFD TRANSITIONAL WATER BODY
- LEISTON BECK WFD RIVER WATER BODY CATCHMENT
- MINSMERE OLD RIVER WFD RIVER WATER BODY CATCHMENT

SSC (mg/l)

0 to 1	50 - 100
1 to 2	100 - 200
2 to 3	200 - 300
3 to 5	300 - 500
5 to 10	500 - 750
10 to 20	750 - 10000
20 - 30	

NOT PROTECTIVELY MARKED

COPYRIGHT
 Reproduced from Ordnance Survey map with the permission of Ordnance Survey on behalf of the controller of Her Majesty's Stationery Office © Crown Copyright (2019). All Rights reserved. NNB GenCo 0100060408.
 © Environment Agency, 2019.

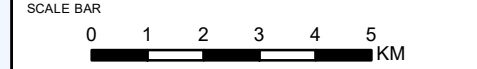


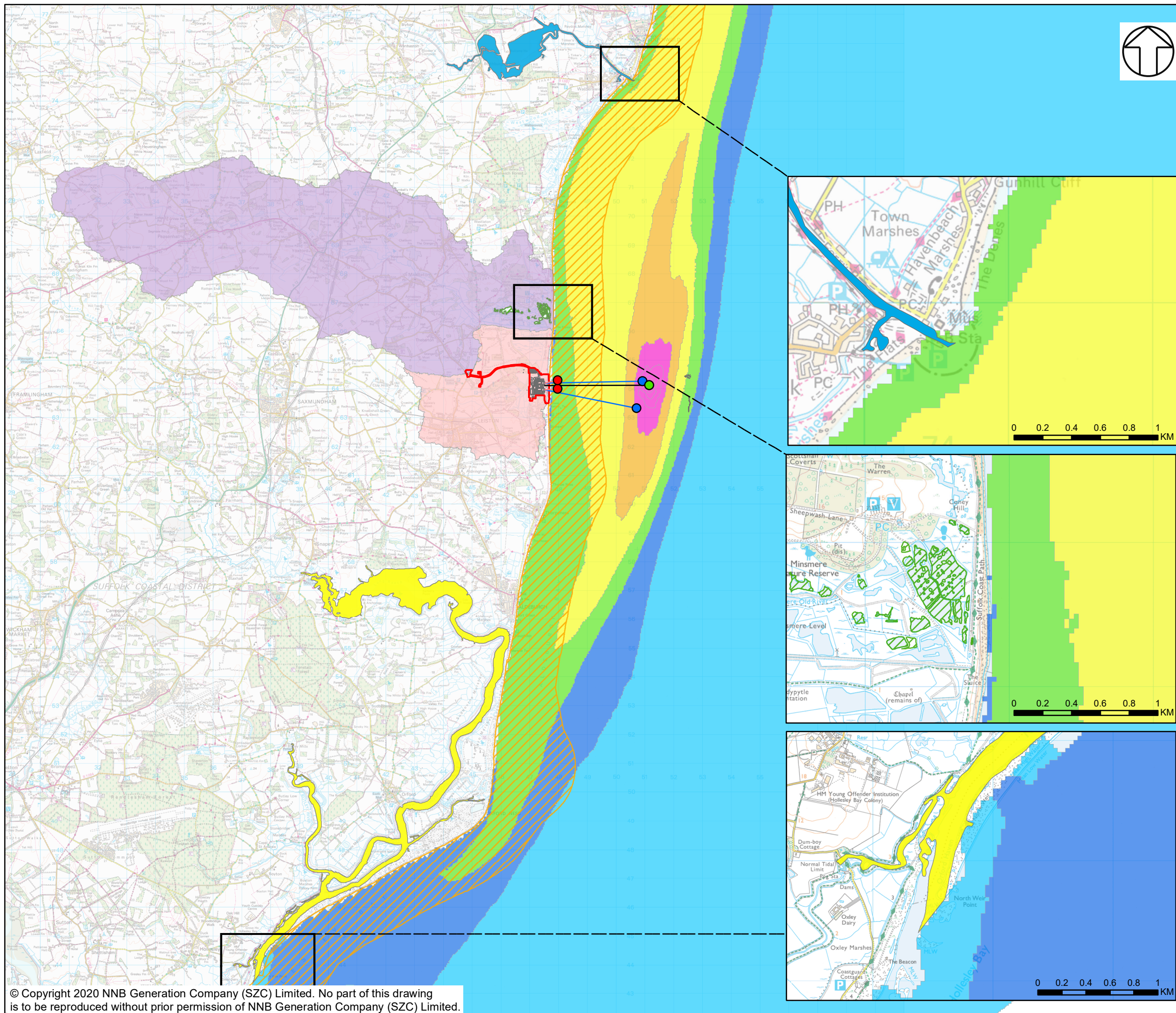
DOCUMENT:
 SIZEWELL C
 WFD COMPLIANCE ASSESSMENT
 PART 2: MAIN DEVELOPMENT SITE
 STAGE 3: FURTHER ASSESSMENT

DRAWING TITLE:
 EXAMPLE OF LOCATION MAXIMUM DEPTH AVERAGE SSC ASSOCIATED WITH CAPITAL DREDGING THE BLF ON NEAP TIDES

DRAWING NO:
 FIGURE 2.20

DATE: MARCH 2020 **DRAWN:** J.T. **SCALE:** 1:135,000 @A3





NOTES

KEY

- OPERATIONAL SITE BOUNDARY
 - INTAKE TUNNEL
 - COOLING WATER OUTFALL TUNNEL
 - FISH RECOVERY AND RETURN (FRR)
 - COOLING WATER DISCHARGE OUTFALL LOCATION
 - COOLING WATER INTAKE LOCATION
 - FISH RECOVERY AND RETURN (FRR) OUTFALLS
 - LEISTON BECK WFD RIVER WATER BODY CATCHMENT
 - MINSMERE OLD RIVER WFD RIVER WATER BODY CATCHMENT
 - SUFFOLK WFD COASTAL WATER BODY
 - WALBERSWICK MARSHES WFD COASTAL WATER BODY
 - ALDE & ORE WFD TRANSITIONAL WATER BODY
 - BLYTH (S) WFD TRANSITIONAL WATER BODY
- ANNUAL SURFACE TEMPERATURE DIFFERENCE 98TH PERCENTILE**
- >3°C
 - >2°C
 - >1.5°C
 - >1°C
 - >0.5°C
 - >0°C

NOT PROTECTIVELY MARKED

COPYRIGHT
 Reproduced from Ordnance Survey map with the permission of Ordnance Survey on behalf of the controller of Her Majesty's Stationary Office © Crown Copyright (2019). All Rights reserved. NNB GenCo 0100060408.
 Source: © 2019, EDF Energy plc. Environment Agency, 2019. © CEFAS, 2019

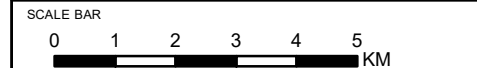


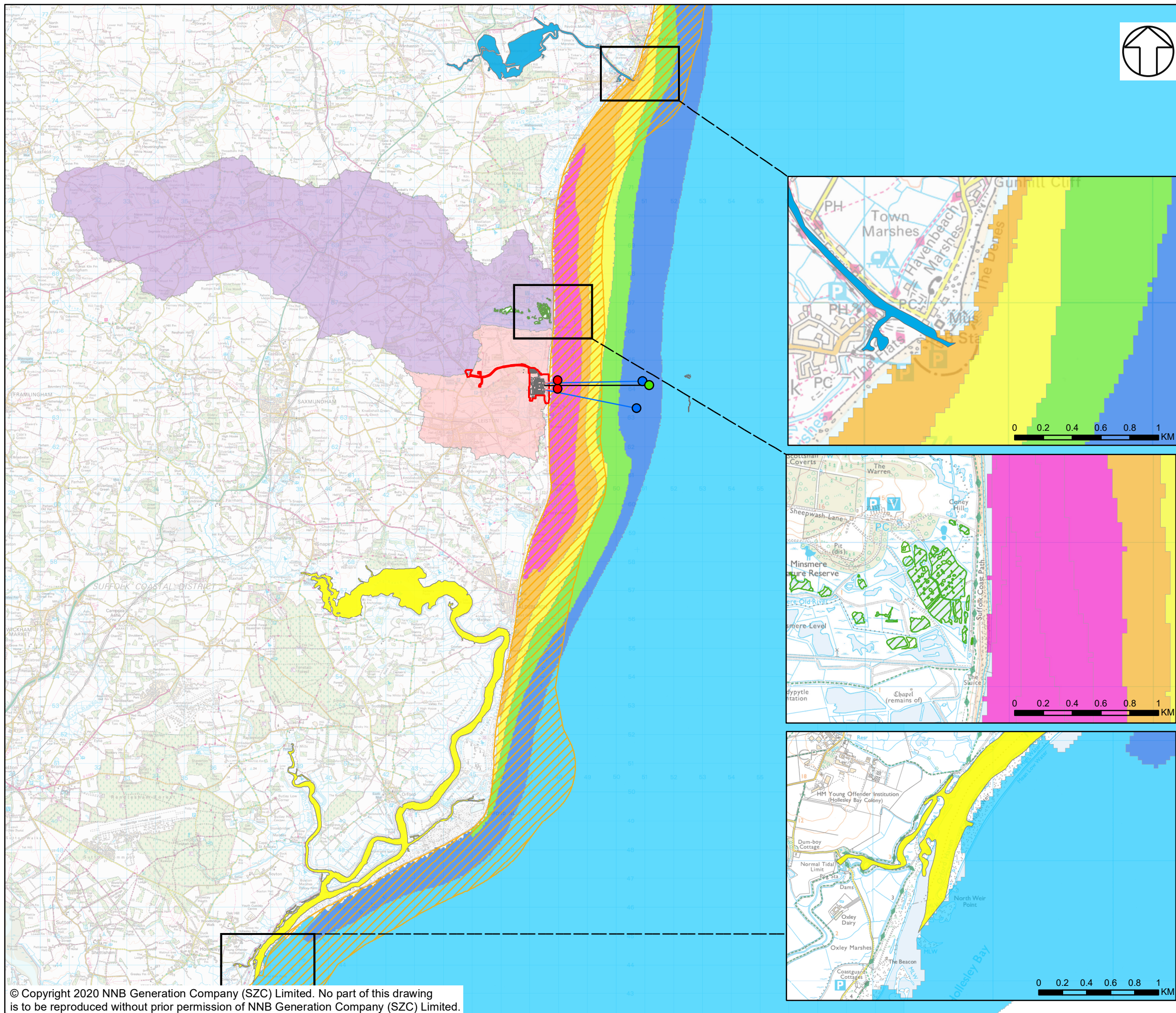
DOCUMENT:
 SIZEWELL C
 WFD COMPLIANCE ASSESSMENT
 PART 2: MAIN DEVELOPMENT SITE
 STAGE 3: FURTHER ASSESSMENT

DRAWING TITLE:
 THERMAL PLUME AREAS AGAINST
 THE SUFFOLK COASTAL WATER BODY
 (UPLIFT, SIZEWELL C ONLY SURFACE)

DRAWING NO:
 FIGURE 2.21

DATE: MARCH 2020 **DRAWN:** J.T. **SCALE:** 1:125,000 @A3





NOTES

KEY

- OPERATIONAL SITE BOUNDARY
 - INTAKE TUNNEL
 - COOLING WATER OUTFALL TUNNEL
 - FISH RECOVERY AND RETURN (FRR)
 - COOLING WATER DISCHARGE OUTFALL LOCATION
 - COOLING WATER INTAKE LOCATION
 - FISH RECOVERY AND RETURN (FRR) OUTFALLS
 - LEISTON BECK WFD RIVER WATER BODY CATCHMENT
 - MINSMERE OLD RIVER WFD RIVER WATER BODY CATCHMENT
 - SUFFOLK WFD COASTAL WATER BODY
 - WALBERSWICK MARSHES WFD COASTAL WATER BODY
 - ALDE & ORE WFD TRANSITIONAL WATER BODY
 - BLYTH (S) WFD TRANSITIONAL WATER BODY
- ANNUAL SURFACE TEMPERATURE DIFFERENCE 98TH PERCENTILE**
- >3°C
 - >2°C
 - >1.5°C
 - >1°C
 - >0.5°C
 - >0°C

NOT PROTECTIVELY MARKED

COPYRIGHT
 Reproduced from Ordnance Survey map with the permission of Ordnance Survey on behalf of the controller of Her Majesty's Stationery Office © Crown Copyright (2019). All Rights reserved. NNB GenCo 0100060408.
 Source: © 2019, EDF Energy plc. Environment Agency, 2019. © CEFAS, 2019

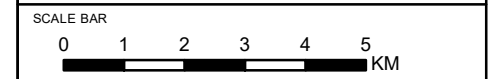


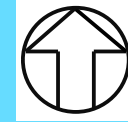
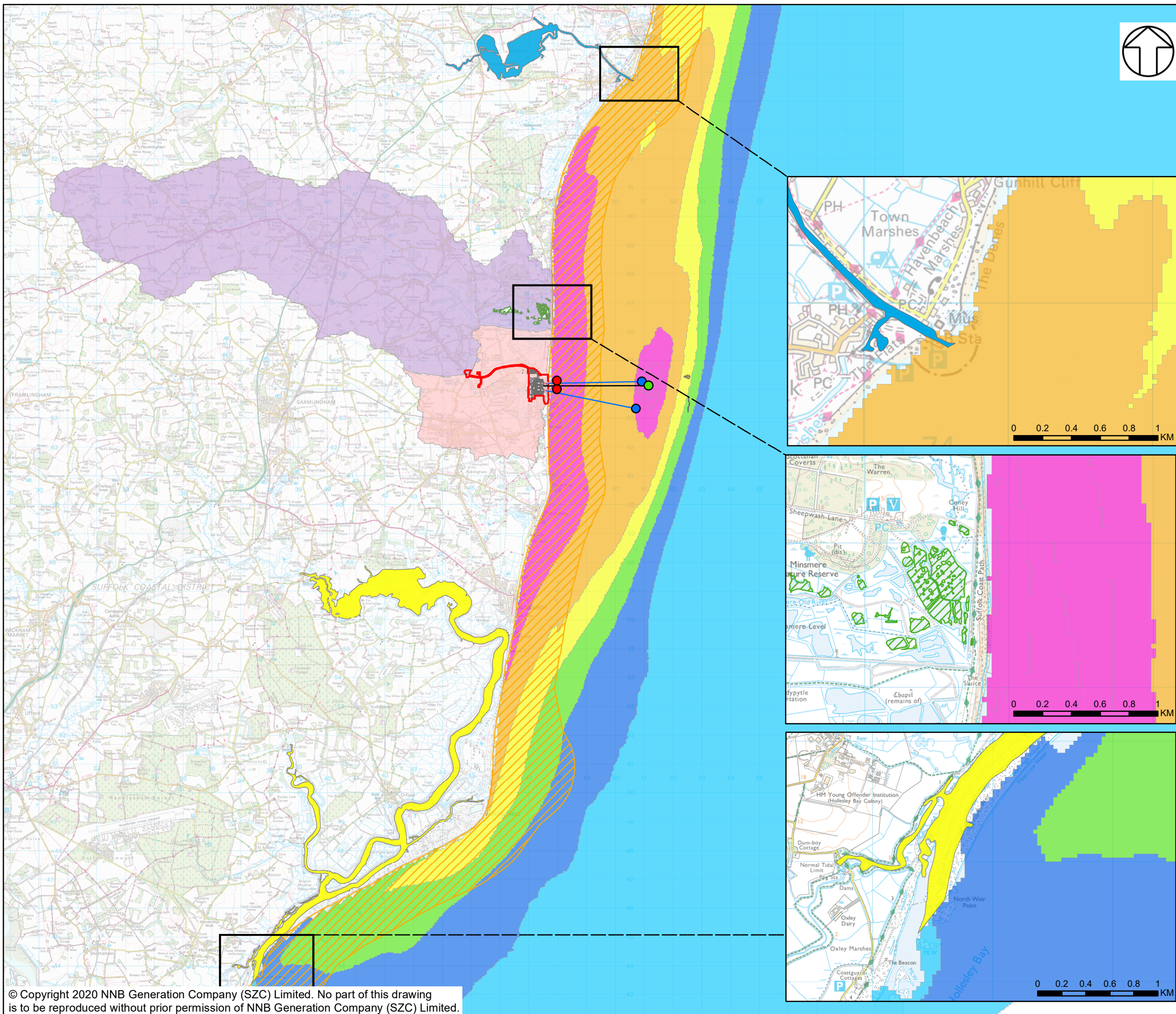
DOCUMENT:
 SIZEWELL C
 WFD COMPLIANCE ASSESSMENT
 PART 2: MAIN DEVELOPMENT SITE
 STAGE 3: FURTHER ASSESSMENT

DRAWING TITLE:
 THERMAL PLUME AREAS AGAINST
 THE SUFFOLK COASTAL WATER BODY
 (UPLIFT, SIZEWELL B ONLY SURFACE)

DRAWING NO:
 FIGURE 2.22

DATE: MARCH 2020 **DRAWN:** J.T. **SCALE:** 1:125,000 @A3





NOTES

KEY

- OPERATIONAL SITE BOUNDARY
- INTAKE TUNNEL
- COOLING WATER OUTFALL TUNNEL
- FISH RECOVERY AND RETURN (FRR)
- COOLING WATER DISCHARGE OUTFALL LOCATION
- COOLING WATER INTAKE LOCATION
- FISH RECOVERY AND RETURN (FRR) OUTFALLS
- LEISTON BECK WFD RIVER WATER BODY CATCHMENT
- MINSMERE OLD RIVER WFD RIVER WATER BODY CATCHMENT
- SUFFOLK WFD COASTAL WATER BODY
- WALBERSWICK MARSHES WFD COASTAL WATER BODY
- ALDE & ORE WFD TRANSITIONAL WATER BODY
- BLYTH (S) WFD TRANSITIONAL WATER BODY

ANNUAL SURFACE TEMPERATURE DIFFERENCE 98TH PERCENTILE

- >3°C
- >2°C
- >1.5°C
- >1°C
- >0.5°C
- >0°C

NOT PROTECTIVELY MARKED

COPYRIGHT

Reproduced from Ordnance Survey map with the permission of Ordnance Survey on behalf of the controller of Her Majesty's Stationery Office © Crown Copyright (2019). All Rights reserved. NNB GenCo 0100060408. Source: © 2019, EDF Energy plc. Environment Agency, 2019. © CEFAS, 2019

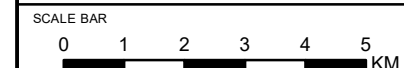


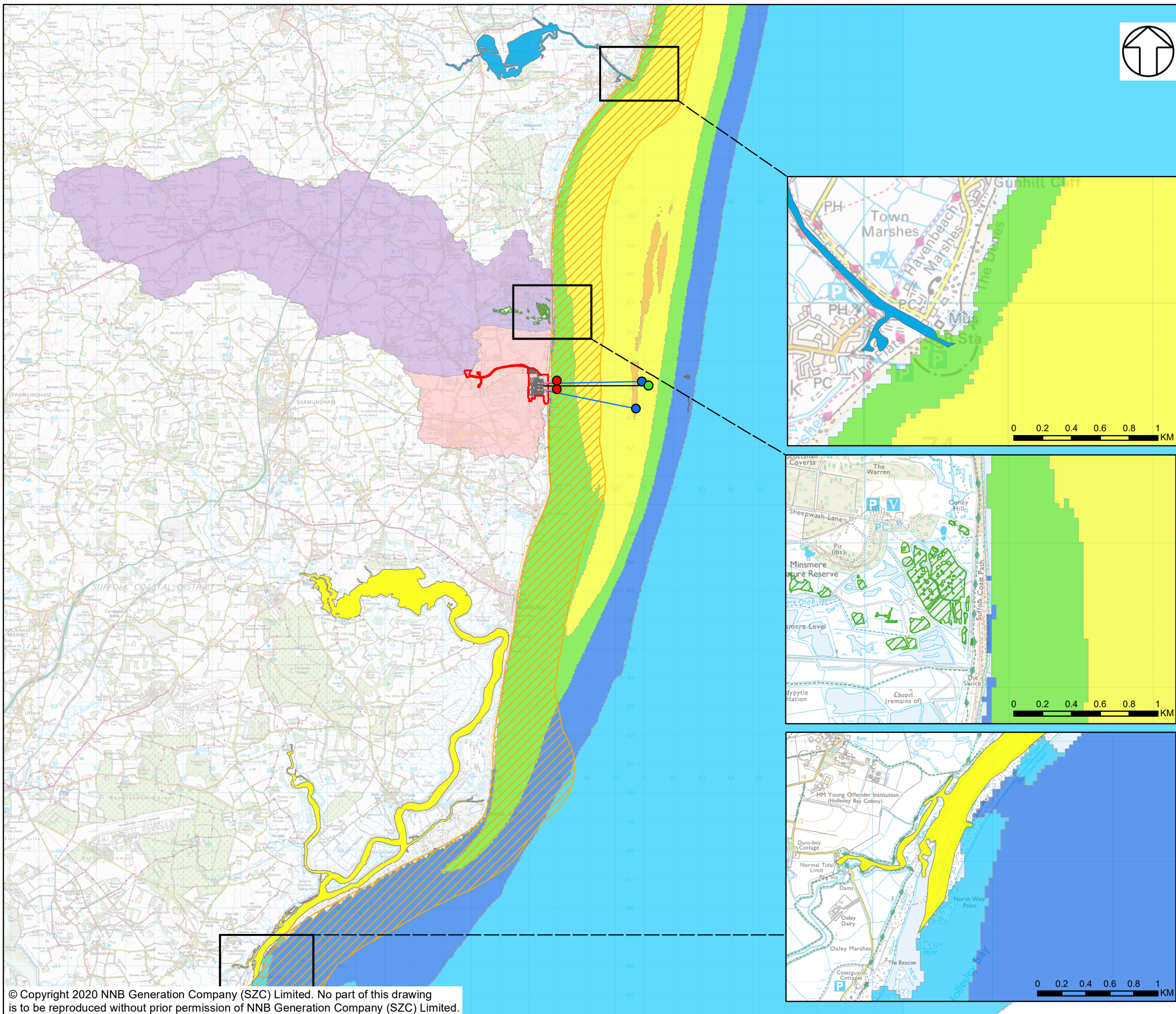
DOCUMENT:
 SIZEWELL C
 WFD COMPLIANCE ASSESSMENT
 PART 2: MAIN DEVELOPMENT SITE
 STAGE 3: FURTHER ASSESSMENT

DRAWING TITLE:
 THERMAL PLUME AREAS AGAINST
 THE SUFFOLK COASTAL WATER BODY
 (UPLIFT SIZEWELL B AND SIZEWELL C,
 SURFACE)

DRAWING NO:
 FIGURE 2.23

DATE: MARCH 2020 DRAWN: J.T. SCALE: 1:125,000 @A3





NOTES

KEY

- OPERATIONAL SITE BOUNDARY
 - INTAKE TUNNEL
 - COOLING WATER OUTFALL TUNNEL
 - FISH RECOVERY AND RETURN (FRR)
 - COOLING WATER DISCHARGE OUTFALL LOCATION
 - COOLING WATER INTAKE LOCATION
 - FISH RECOVERY AND RETURN (FRR) OUTFALLS
 - LEISTON BECK WFD RIVER WATER BODY CATCHMENT
 - MINSMERE OLD RIVER WFD RIVER WATER BODY CATCHMENT
 - SUFFOLK WFD COASTAL WATER BODY
 - WALBERSWICK MARSHES WFD COASTAL WATER BODY
 - ALDE & ORE WFD TRANSITIONAL WATER BODY
 - BLYTH (S) WFD TRANSITIONAL WATER BODY
- ANNUAL SEABED TEMPERATURE DIFFERENCE 98TH PERCENTILE**
- >3°C
 - >2°C
 - >1.5°C
 - >1°C
 - >0.5°C
 - >0°C

NOT PROTECTIVELY MARKED

COPYRIGHT
 Reproduced from Ordnance Survey map with the permission of Ordnance Survey on behalf of the controller of Her Majesty's Stationary Office © Crown Copyright (2019). All Rights reserved. NNB GenCo 0100060408.
 Source: © 2019, EDF Energy plc. Environment Agency, 2019. © CEFAS, 2019



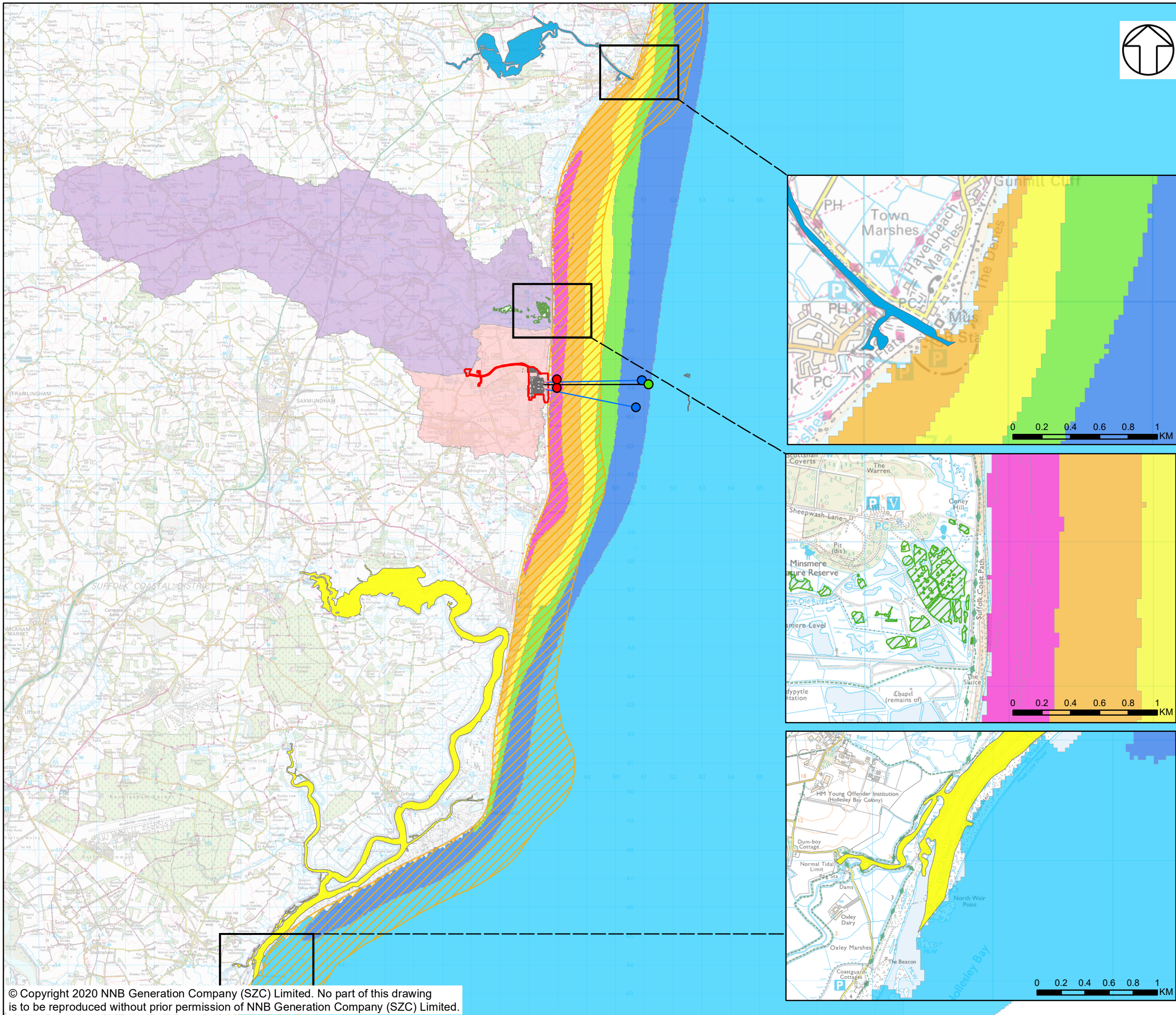
DOCUMENT:
 SIZEWELL C
 WFD COMPLIANCE ASSESSMENT
 PART 2: MAIN DEVELOPMENT SITE
 STAGE 3: FURTHER ASSESSMENT

DRAWING TITLE:
 THERMAL PLUME AREAS AGAINST
 THE SUFFOLK COASTAL WATER BODY
 (UPLIFT, SIZEWELL C ONLY SEABED)

DRAWING NO:
 FIGURE 2.24

DATE: MARCH 2020 **DRAWN:** J.T. **SCALE:** 1:125,000 @A3





NOTES

KEY

- OPERATIONAL SITE BOUNDARY
 - INTAKE TUNNEL
 - COOLING WATER OUTFALL TUNNEL
 - FISH RECOVERY AND RETURN (FRR)
 - COOLING WATER DISCHARGE OUTFALL LOCATION
 - COOLING WATER INTAKE LOCATION
 - FISH RECOVERY AND RETURN (FRR) OUTFALLS
 - LEISTON BECK WFD RIVER WATER BODY CATCHMENT
 - MINSMERE OLD RIVER WFD RIVER WATER BODY CATCHMENT
 - SUFFOLK WFD COASTAL WATER BODY
 - WALBERSWICK MARSHES WFD COASTAL WATER BODY
 - ALDE & ORE WFD TRANSITIONAL WATER BODY
 - BLYTH (S) WFD TRANSITIONAL WATER BODY
- ANNUAL SEABED TEMPERATURE DIFFERENCE 98TH PERCENTILE**
- >3°C
 - >2°C
 - >1.5°C
 - >1°C
 - >0.5°C
 - >0°C

NOT PROTECTIVELY MARKED

COPYRIGHT
 Reproduced from Ordnance Survey map with the permission of Ordnance Survey on behalf of the controller of Her Majesty's Stationary Office © Crown Copyright (2019). All Rights reserved. NNB GenCo 0100060408.
 Source: © 2019, EDF Energy plc. Environment Agency, 2019. © CEFAS, 2019



DOCUMENT:
 SIZEWELL C
 WFD COMPLIANCE ASSESSMENT
 PART 2: MAIN DEVELOPMENT SITE
 STAGE 3: FURTHER ASSESSMENT

DRAWING TITLE:
 THERMAL PLUME AREAS AGAINST
 THE SUFFOLK COASTAL WATER BODY
 (UPLIFT, SIZEWELL B ONLY SEABED)

DRAWING NO:
 FIGURE 2.25

DATE: MARCH 2020 **DRAWN:** J.T. **SCALE:** 1:125,000 @A3

