



# The Sizewell C Project

## 8.14 Water Framework Directive Compliance Assessment Report Part 2 Figures 2.1 to 2.32 - Part 1 of 3

---

Revision: 1.0  
Applicable Regulation: Regulation 5(2)(q)  
PINS Reference Number: EN010012

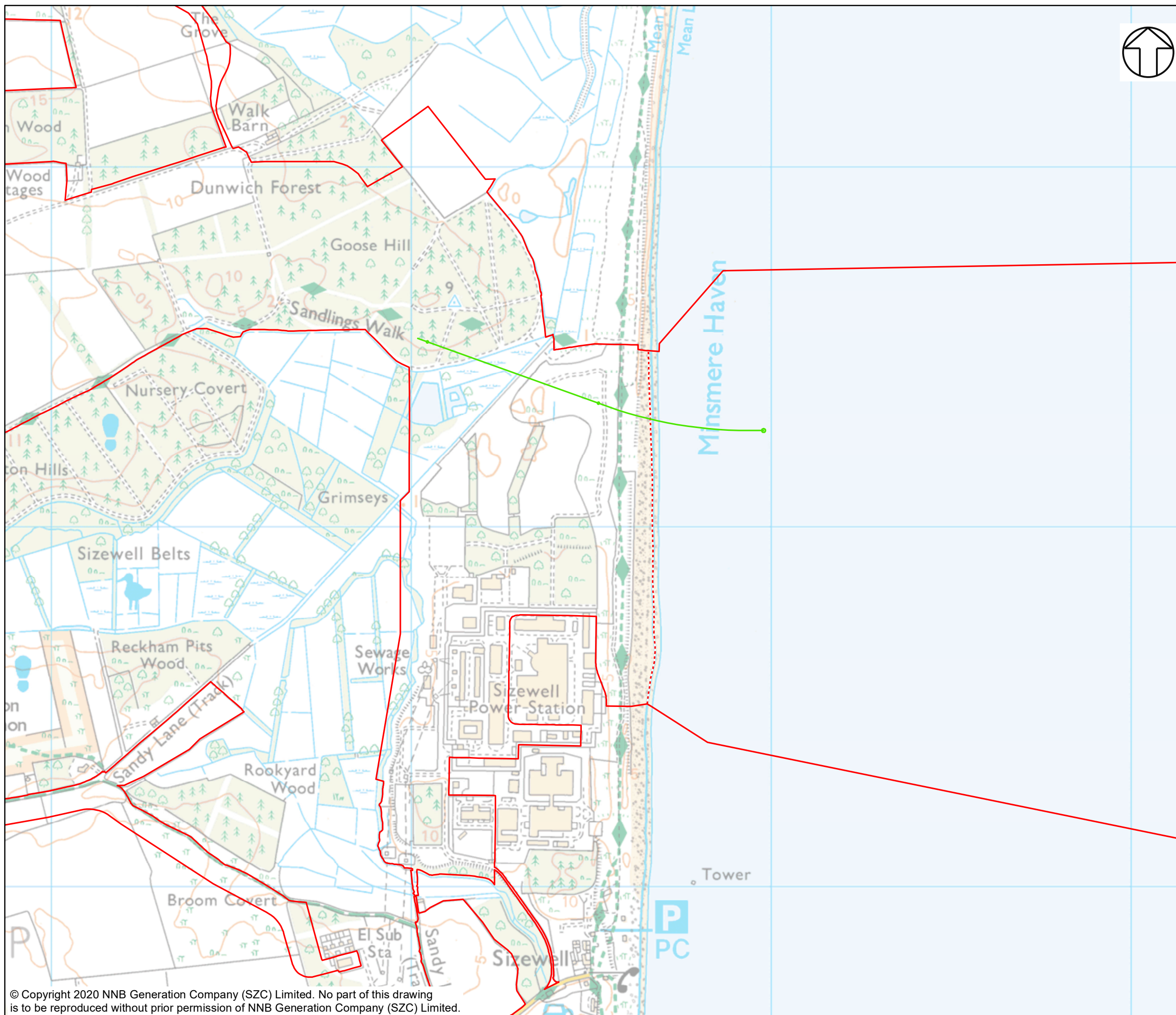
---

May 2020

Planning Act 2008  
Infrastructure Planning (Applications: Prescribed  
Forms and Procedure) Regulations 2009







NOTES

KEY

- SIZEWELL C MAIN DEVELOPMENT SITE BOUNDARY
- - - DEMARCATIION LINE
- COMBINED DRAINAGE OUTFALL LOCATION

NOT PROTECTIVELY MARKED

**COPYRIGHT**  
 Reproduced from Ordnance Survey map with the permission of Ordnance Survey on behalf of the controller of Her Majesty's Stationary Office © Crown Copyright (2019). All Rights reserved. NNB GenCo 0100060408.

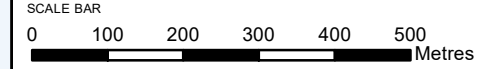


DOCUMENT:  
 SIZEWELL C  
 WFD COMPLIANCE ASSESSMENT  
 PART 2: MAIN DEVELOPMENT SITE  
 PROJECT DESCRIPTION

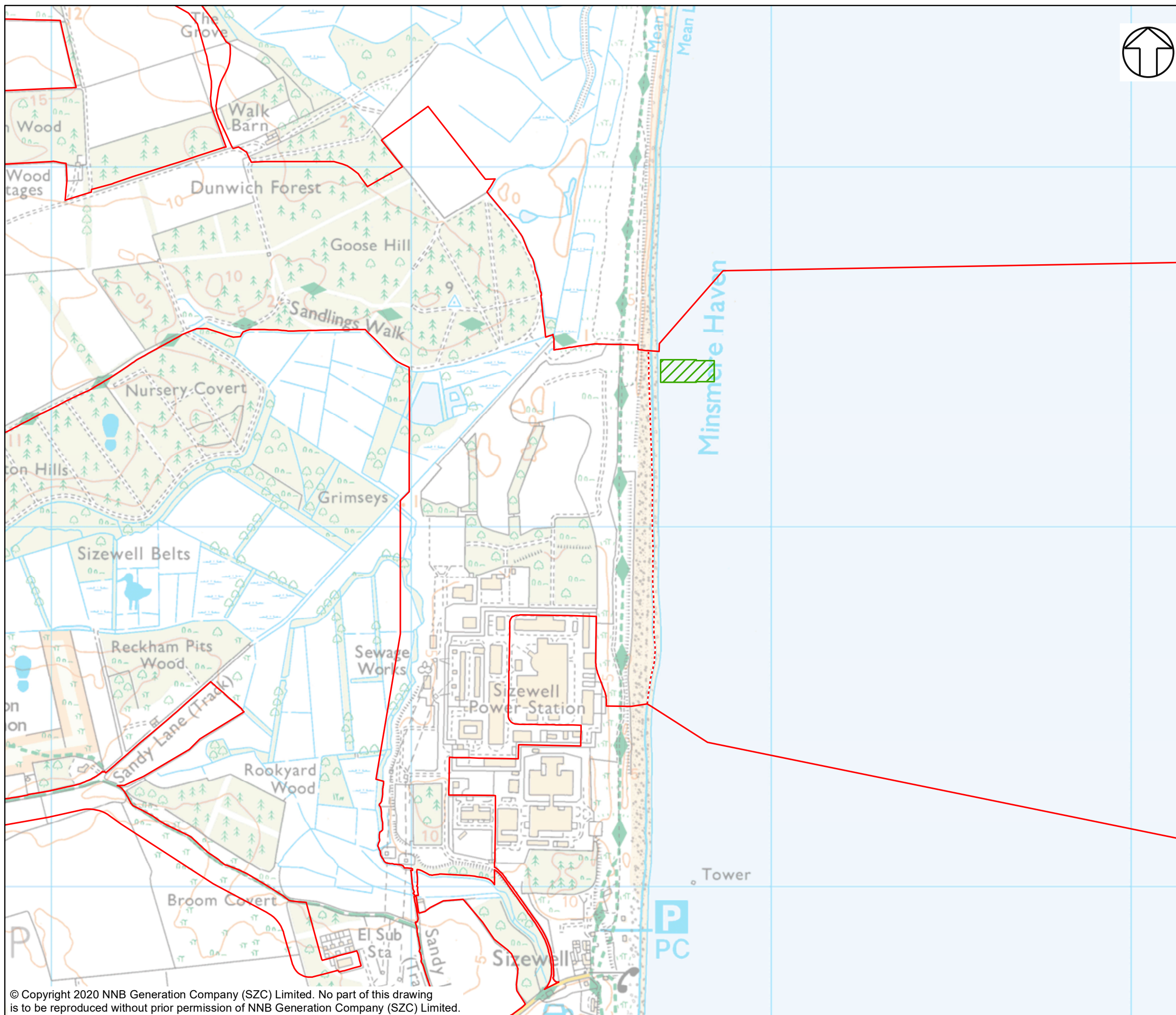
DRAWING TITLE:  
 LOCATION OF THE CDO

DRAWING NO:  
 FIGURE 2.1

DATE: MARCH 2020      DRAWN: J.T.      SCALE: 1:10,000 @A3







**NOTES**

**KEY**

- SIZEWELL C MAIN DEVELOPMENT SITE BOUNDARY
- - - DEMARCATION LINE
- ▨ OPERATIONAL DREDGE AREA

NOT PROTECTIVELY MARKED

**COPYRIGHT**  
 Reproduced from Ordnance Survey map with the permission of Ordnance Survey on behalf of the controller of Her Majesty's Stationary Office © Crown Copyright (2019). All Rights reserved. NNB GenCo 0100060408.

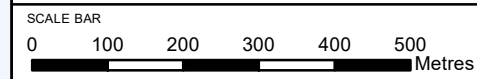


**DOCUMENT:**  
 SIZEWELL C  
 WFD COMPLIANCE ASSESSMENT  
 PART 2: MAIN DEVELOPMENT SITE  
 PROJECT DESCRIPTION

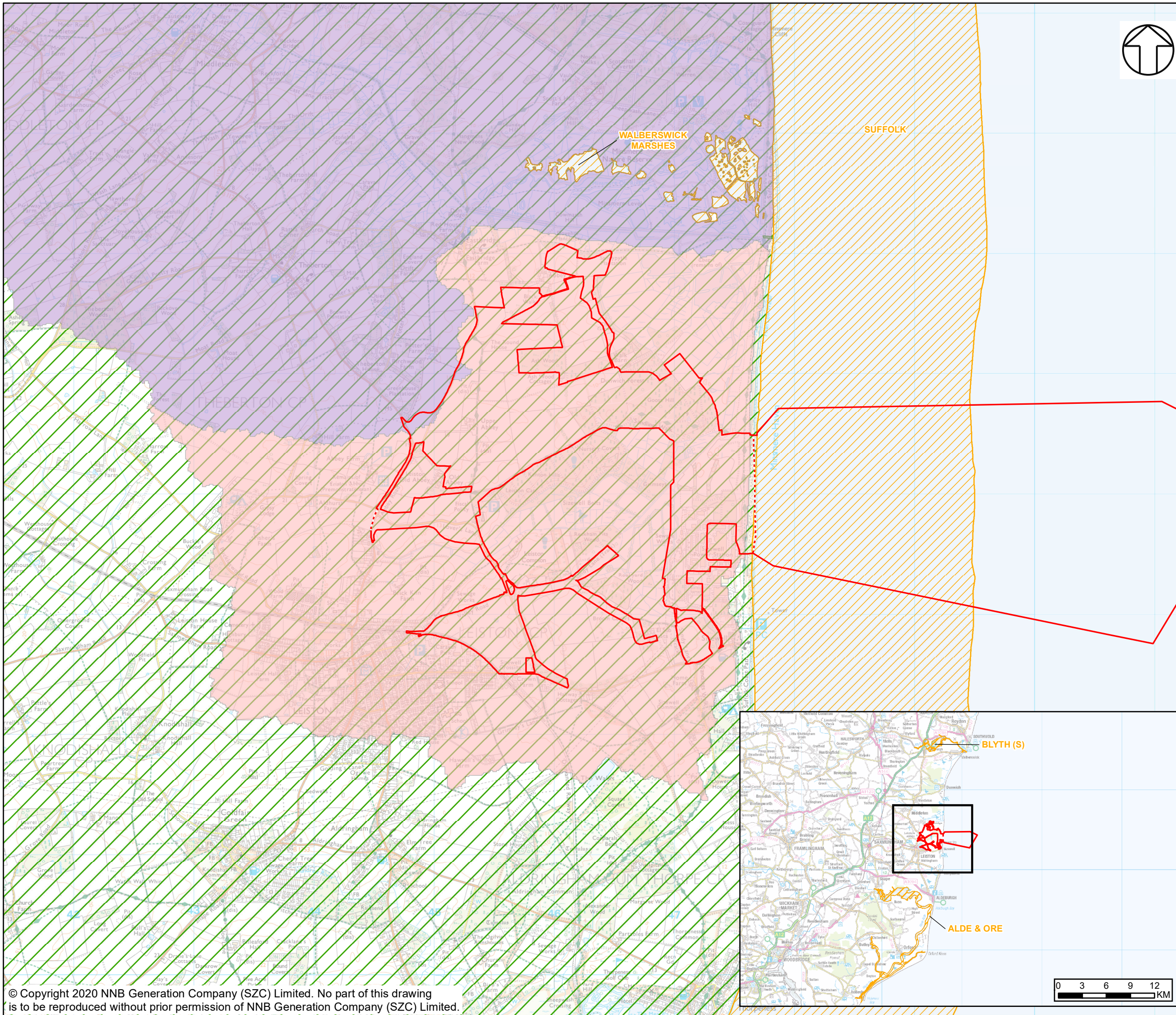
**DRAWING TITLE:**  
 LOCATION OF DREDGE AREA (BEACH  
 LANDING FACILITY)

**DRAWING NO.:**  
 FIGURE 2.2

<b>DATE:</b> MARCH 2020	<b>DRAWN:</b> J.T.	<b>SCALE:</b> 1:10,000 @A3
----------------------------	-----------------------	-------------------------------







**NOTES**

**KEY**

- SIZEWELL C MAIN DEVELOPMENT SITE BOUNDARY
- - - DEMARCATION LINE
- LEISTON BECK WFD RIVER WATER BODY CATCHMENT
- MINSMERE OLD RIVER WFD RIVER WATER BODY CATCHMENT
- WAVENEY AND EAST SUFFOLK CHALK & CRAG WFD GROUND WATER BODY
- WFD TRANSITIONAL AND COASTAL WATER BODIES

NOT PROTECTIVELY MARKED

**COPYRIGHT**  
 Reproduced from Ordnance Survey map with the permission of Ordnance Survey on behalf of the controller of Her Majesty's Stationary Office © Crown Copyright (2019). All Rights reserved. NNB GenCo 0100060408. WFD data: © Environment Agency.

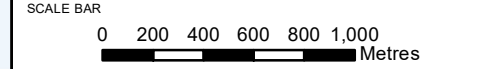


**DOCUMENT:**  
 SIZEWELL C  
 WFD COMPLIANCE ASSESSMENT  
 PART 2: MAIN DEVELOPMENT SITE  
 STAGE 1: SCREENING

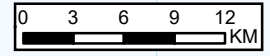
**DRAWING TITLE:**  
 RED LINE BOUNDARY AGAINST  
 WFD WATER BODY OUTLINES

**DRAWING NO.:**  
 FIGURE 2.3

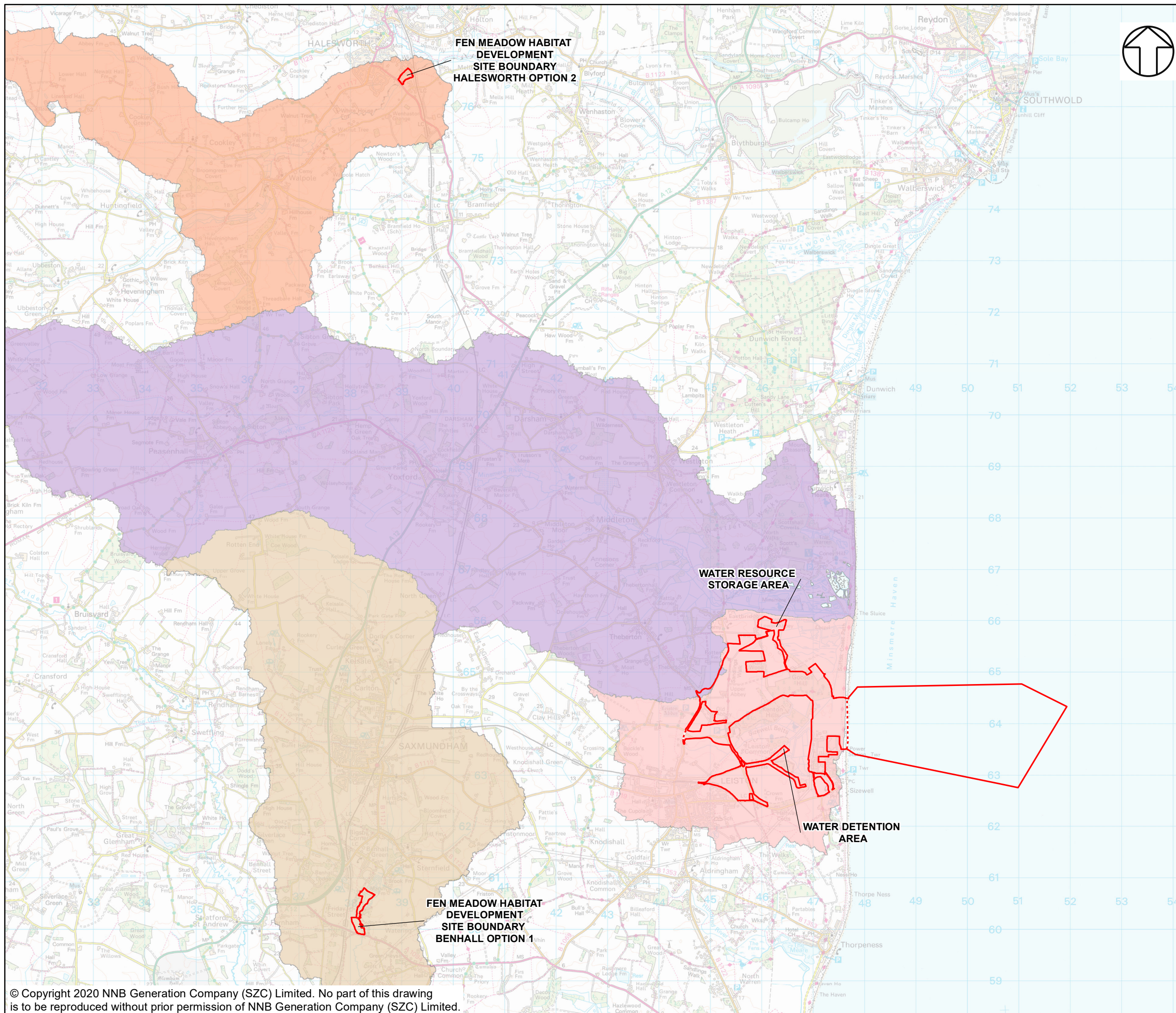
**DATE:** MARCH 2020      **DRAWN:** J.T.      **SCALE:** 1:30,000 @A3



© Copyright 2020 NNB Generation Company (SZC) Limited. No part of this drawing is to be reproduced without prior permission of NNB Generation Company (SZC) Limited.







**NOTES**

**KEY**

- SIZEWELL C AND ASSOCIATED DEVELOPMENT SITE BOUNDARIES
- DEMARCATION LINE
- HALESWORTH WFD RIVER WATER BODY CATCHMENT
- FROMUS WFD RIVER WATER BODY CATCHMENT
- LEISTON BECK WFD RIVER WATER BODY CATCHMENT
- MINSMERE OLD RIVER WFD RIVER WATER BODY CATCHMENT

NOT PROTECTIVELY MARKED

**COPYRIGHT**  
 Reproduced from Ordnance Survey map with the permission of Ordnance Survey on behalf of the controller of Her Majesty's Stationary Office © Crown Copyright (2019). All Rights reserved. NNB GenCo 0100060408. WFD data: © Environment Agency.

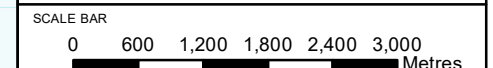


**DOCUMENT:**  
 SIZEWELL C  
 WFD COMPLIANCE ASSESSMENT  
 PART 2: MAIN DEVELOPMENT SITE  
 STAGE 1: SCREENING

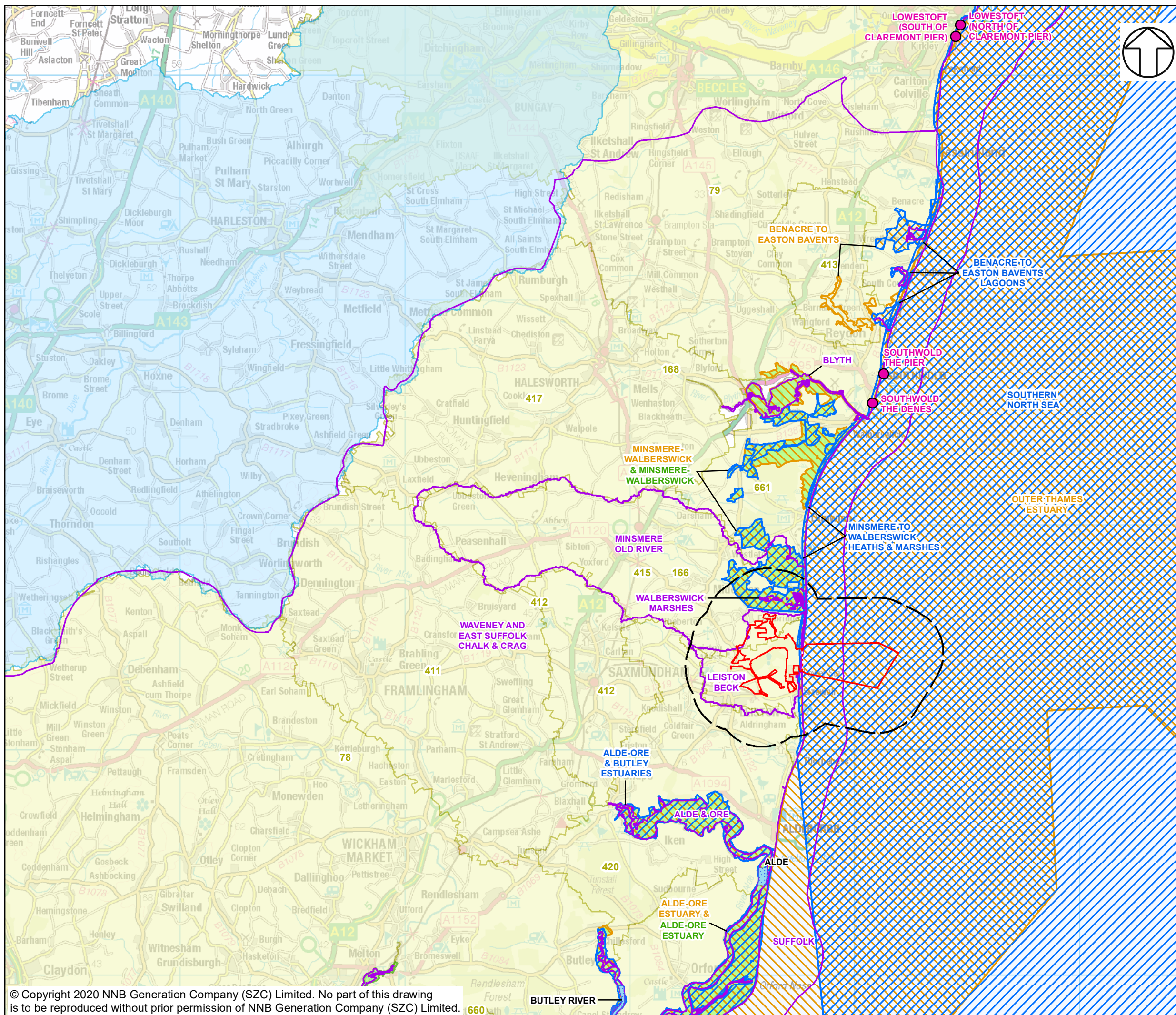
**DRAWING TITLE:**  
 PROPOSED FEN MEADOW HABITAT  
 DEVELOPMENT AREAS AND WATER STORAGE  
 AREAS

**DRAWING NO:**  
 FIGURE 2.4

**DATE:** MARCH 2020      **DRAWN:** J.T.      **SCALE:** 1:70,000 @A3







- NOTES**
- KEY**
- SIZEWELL C MAIN DEVELOPMENT SITE BOUNDARY
  - - - DEMARCATION LINE
  - 2KM BUFFER
  - SHELLFISH WATER
  - DRINKING WATER SAFEGUARD ZONE
  - NITRATE VULNERABLE ZONE
  - WATERBODIES
  - SPECIAL AREA OF CONSERVATION (SAC)
  - SPECIAL PROTECTION AREA (SPA)
  - RAMSAR SITE
  - BATHING WATER MONITORING LOCATIONS

NOT PROTECTIVELY MARKED

**COPYRIGHT**  
 Reproduced from Ordnance Survey map with the permission of Ordnance Survey on behalf of the controller of Her Majesty's Stationery Office © Crown Copyright (2019). All Rights reserved. NNB GenCo 0100060408. WFD data: © Environment Agency. Designation data: Natural England, © Natural England material is reproduced with the permission of Natural England 2019.

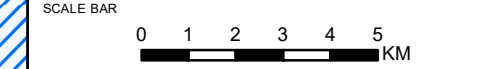


**DOCUMENT:**  
 SIZEWELL C  
 WFD COMPLIANCE ASSESSMENT  
 PART 2: MAIN DEVELOPMENT SITE  
 STAGE 2: SCOPING

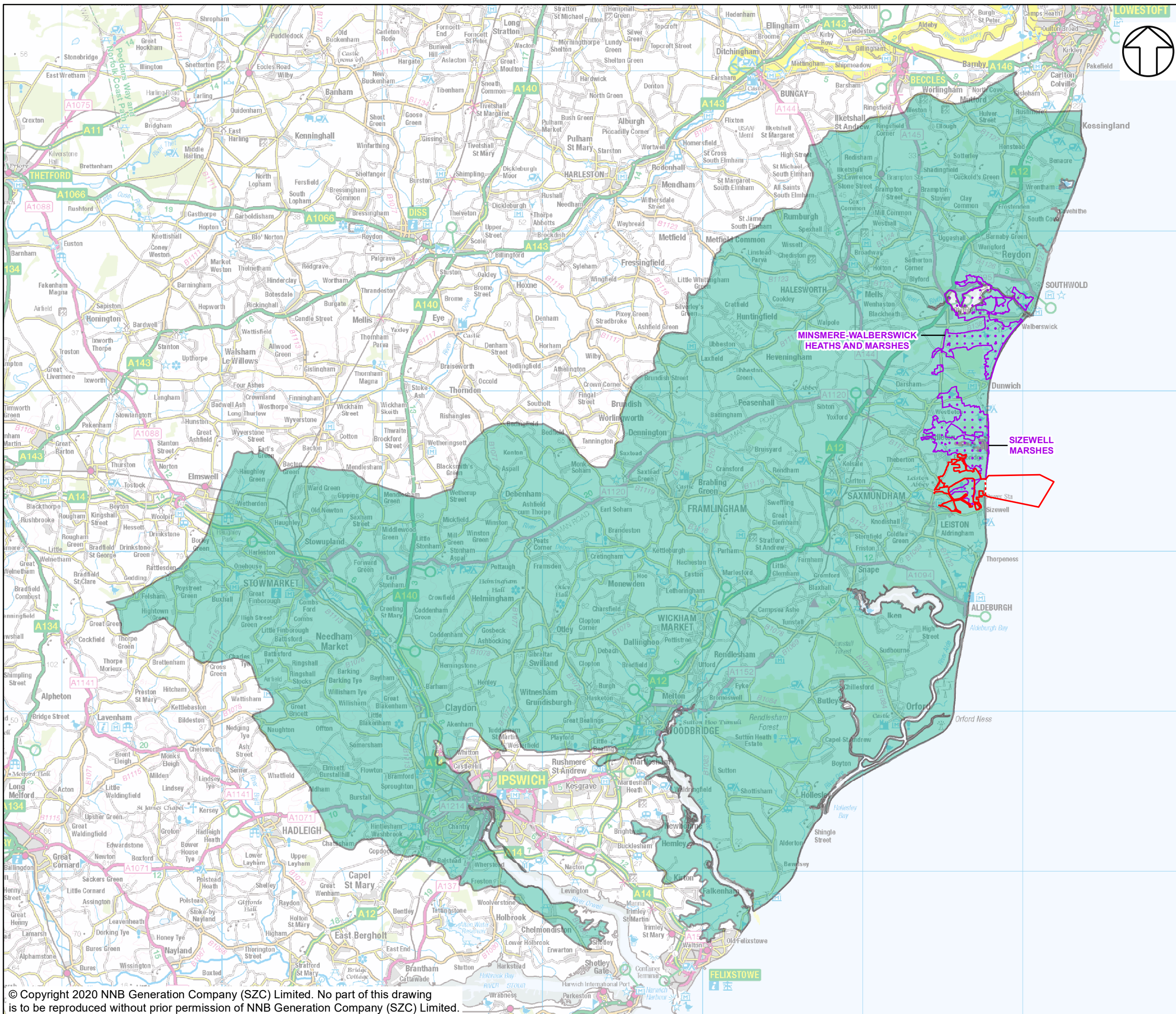
**DRAWING TITLE:**  
 RED LINE BOUNDARY AGAINST  
 WFD PROTECTED AREAS

**DRAWING NO.:**  
 FIGURE 2.5

**DATE:** JAN 2020      **DRAWN:** J.T.      **SCALE:** 1:160,000 @A3







**NOTES**

**KEY**

- **SIZEWELL C MAIN DEVELOPMENT SITE BOUNDARY**
- - - **DEMARICATION LINE**
- WAVENEY AND EAST SUFFOLK CHALK & CRAG WFD GROUND WATER BODY**
- SITE OF SPECIAL SCIENTIFIC INTEREST (SSSI)**

NOT PROTECTIVELY MARKED

**COPYRIGHT**  
 Reproduced from Ordnance Survey map with the permission of Ordnance Survey on behalf of the controller of Her Majesty's Stationery Office © Crown Copyright (2019). All Rights reserved. NNB GenCo 0100060408.  
 © Environment Agency, 2019. Natural England, © Natural England material is reproduced with the permission of Natural England 2019.

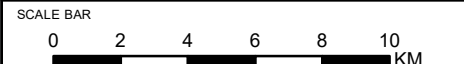


**DOCUMENT:**  
 SIZEWELL C  
 WFD COMPLIANCE ASSESSMENT  
 PART 2: MAIN DEVELOPMENT SITE  
 STAGE 3: FURTHER ASSESSMENT

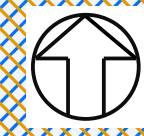
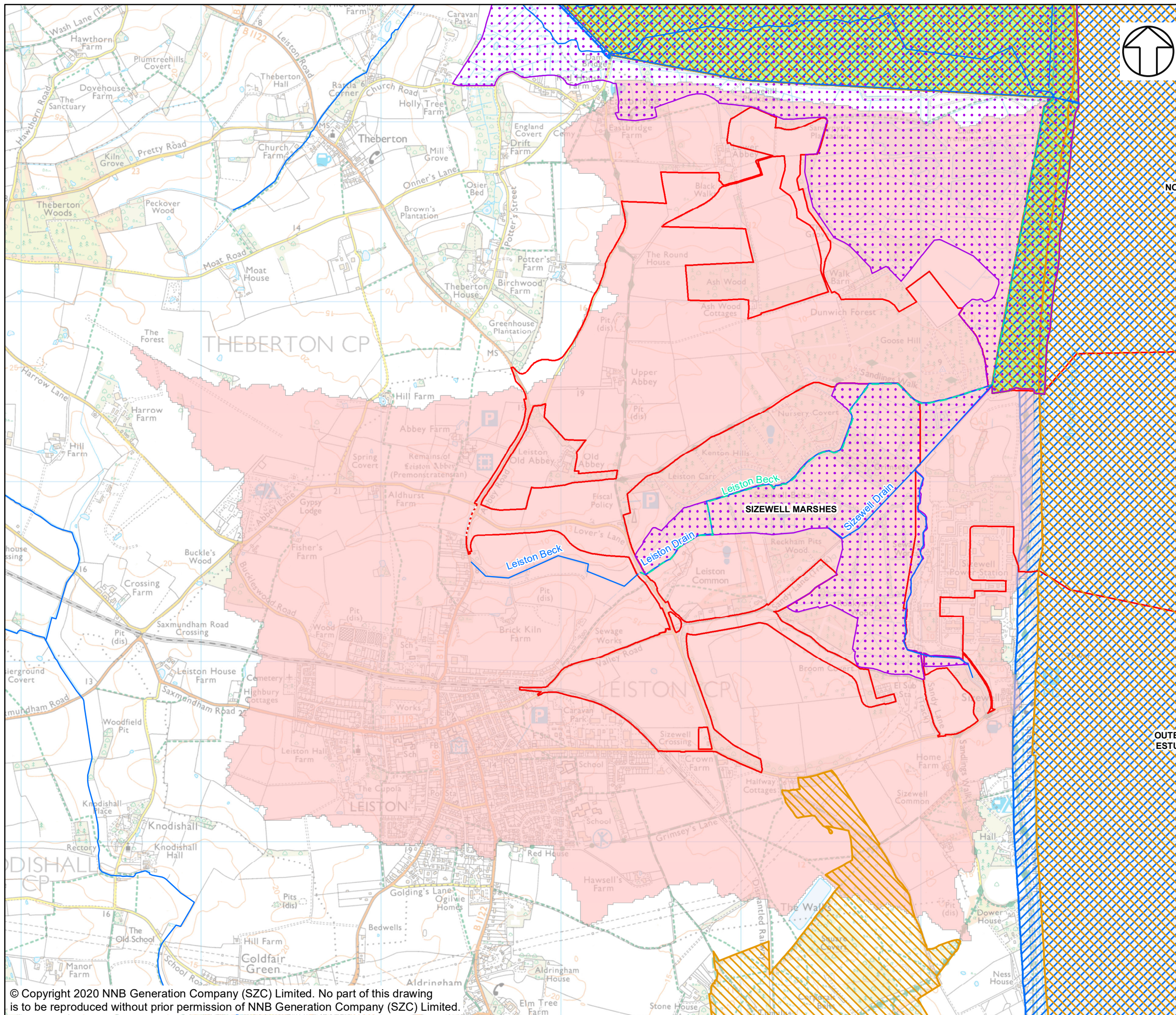
**DRAWING TITLE:**  
 RED LINE BOUNDARY AGAINST  
 GROUNDWATER BODY OUTLINE  
 AND GROUND WATER DEPENDENT  
 TERRESTRIAL ECOSYSTEMS

**DRAWING NO:**  
 FIGURE 2.6

**DATE:** MARCH 2020      **DRAWN:** J.T.      **SCALE:** 1:225,000 @A3







**NOTES**

**KEY**

- SIZEWELL C MAIN DEVELOPMENT SITE BOUNDARY
- DEMARCATION LINE
- DESIGNATIONS**
- SITE OF SPECIAL SCIENTIFIC INTEREST (SSSI)
- SPECIAL AREA OF CONSERVATION (SAC)
- SPECIAL PROTECTION AREA (SPA)
- RAMSAR
- WFD RIVER WATER BODY CATCHMENTS**
- LEISTON BECK WFD RIVER WATER BODY CATCHMENT
- WFD RIVER CANAL AND SURFACE WATER TRANSFER WATER BODY
- MAIN RIVER

NOT PROTECTIVELY MARKED

**COPYRIGHT**  
 Reproduced from Ordnance Survey map with the permission of Ordnance Survey on behalf of the controller of Her Majesty's Stationery Office © Crown Copyright (2019). All Rights reserved. NNB GenCo 0100060408.  
 © Environment Agency, 2019. Natural England, © Natural England material is reproduced with the permission of Natural England 2019.

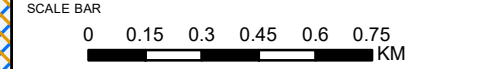


**DOCUMENT:**  
 SIZEWELL C  
 WFD COMPLIANCE ASSESSMENT  
 PART 2: MAIN DEVELOPMENT SITE  
 STAGE 3: FURTHER ASSESSMENT

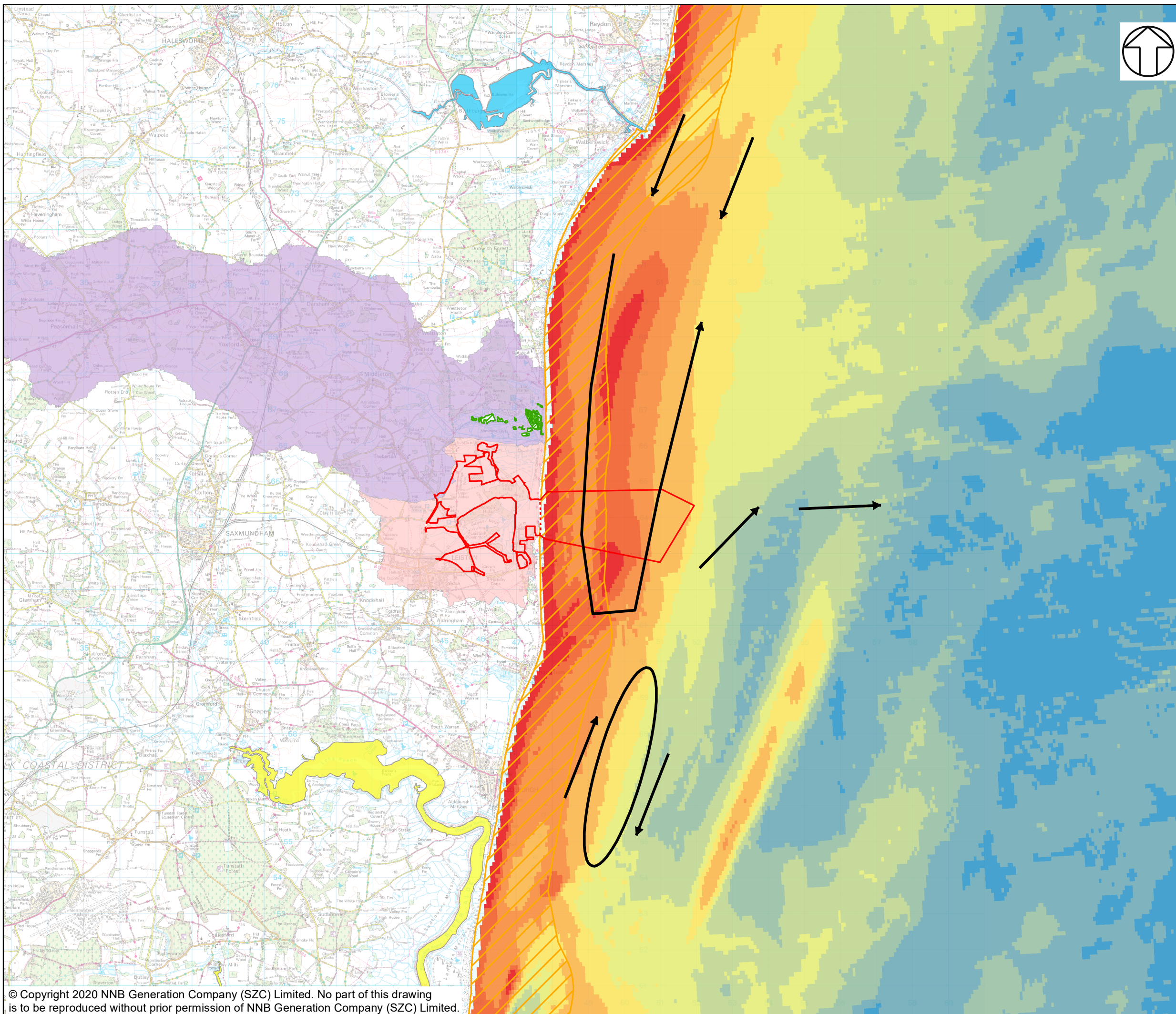
**DRAWING TITLE:**  
 RED LINE BOUNDARY AGAINST  
 LEISTON BECK WATER BODY

**DRAWING NO:**  
 FIGURE 2.7

**DATE:** MARCH 2020      **DRAWN:** J.T.      **SCALE:** 1:20,000 @A3







**NOTES**

**KEY**

- SIZEWELL C MAIN DEVELOPMENT SITE BOUNDARY
- DEMARCATION LINE
- SUFFOLK WFD COASTAL WATER BODY
- WALBERSWICK MARSHES WFD COASTAL WATER BODY
- ALDE & ORE WFD TRANSITIONAL WATER BODY
- BLYTH (S) WFD TRANSITIONAL WATER BODY
- LEISTON BECK WFD RIVER WATER BODY CATCHMENT
- MINSMERE OLD RIVER WFD RIVER WATER BODY CATCHMENT

**BATHYMETRY**

**DEPTH (M)**

- Below -29
- 26 to -29
- 23 to -26
- 20 to -23
- 17 to -20
- 14 to -17
- 11 to -14
- 8 to -11
- 5 to -8
- Above -5

NOT PROTECTIVELY MARKED

**COPYRIGHT**

Reproduced from Ordnance Survey map with the permission of Ordnance Survey on behalf of the controller of Her Majesty's Stationary Office © Crown Copyright (2019). All Rights reserved. NNB GenCo 0100060408. © Environment Agency, 2019.



**DOCUMENT:**

SIZEWELL C  
WFD COMPLIANCE ASSESSMENT  
PART 2: MAIN DEVELOPMENT SITE  
STAGE 3: FURTHER ASSESSMENT

**DRAWING TITLE:**

SCHEMATIC SAND TRANSPORT PATHWAYS  
DEDUCED FROM NUMERICAL MODELLING  
(BEEMS TECHNICAL REPORT TR357)

**DRAWING NO:**

FIGURE 2.10

DATE:  
JAN 2020

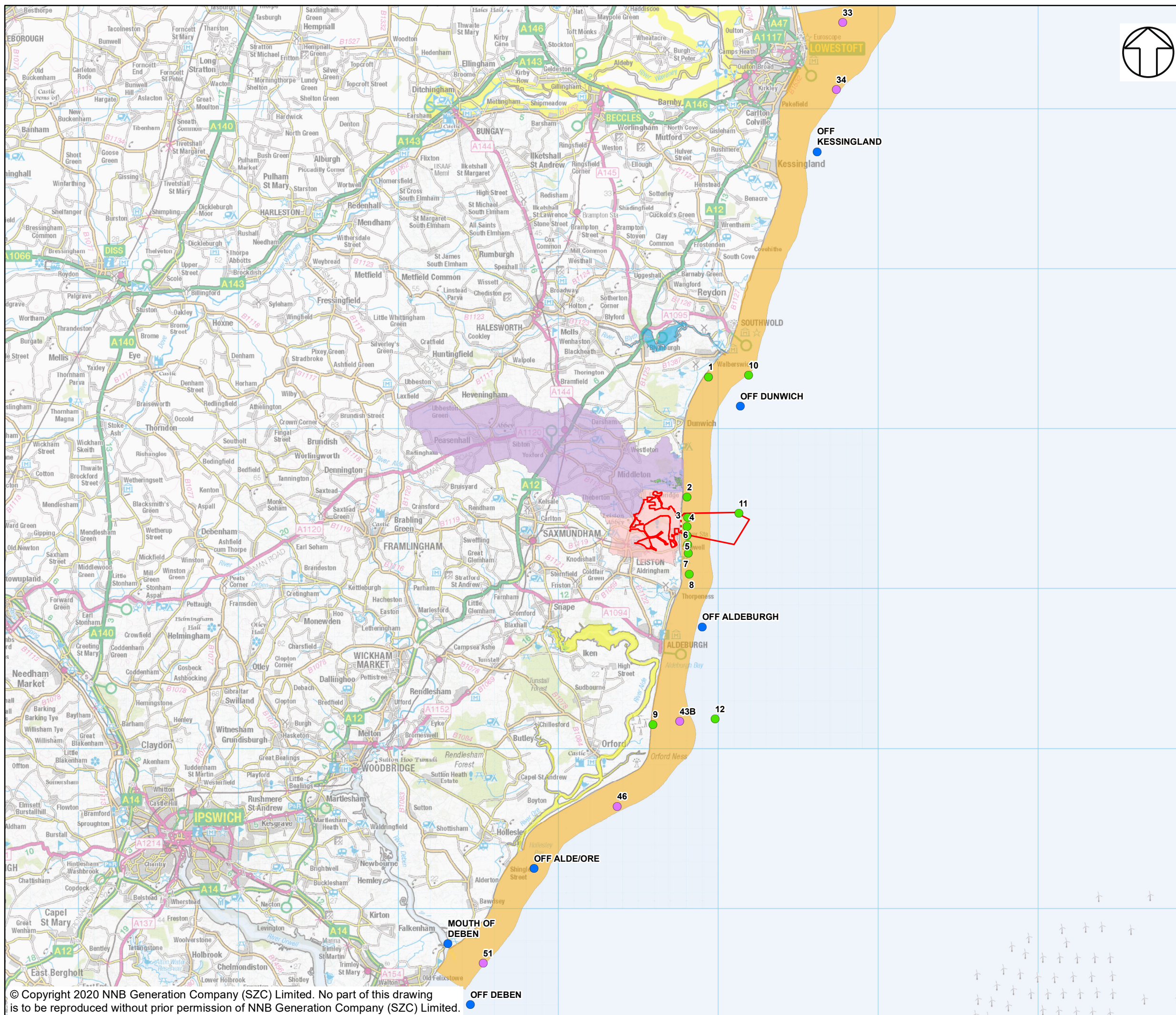
DRAWN:  
J.T.

SCALE:  
1:100,000 @A3

**SCALE BAR**







**NOTES**

**KEY**

- SIZEWELL C MAIN DEVELOPMENT SITE BOUNDARY
- DEMARCATION LINE
- LEISTON BECK WFD RIVER WATER BODY CATCHMENT
- MINSMERE OLD RIVER WFD RIVER WATER BODY CATCHMENT
- SUFFOLK WFD COASTAL WATER BODY
- WALBERSWICK MARSHES WFD COASTAL WATER BODY
- ALDE & ORE WFD TRANSITIONAL WATER BODY
- BLYTH (S) WFD TRANSITIONAL WATER BODY

**SIZEWELL SELECTION OF EA WATER SAMPLING SITES**

- OTHER ENVIRONMENT AGENCY WATER SAMPLING SITES
- ENVIRONMENT AGENCY SUFFOLK COAST SAMPLE STATIONS
- WATER SAMPLING SITES

NOT PROTECTIVELY MARKED

**COPYRIGHT**  
 Reproduced from Ordnance Survey map with the permission of Ordnance Survey on behalf of the controller of Her Majesty's Stationery Office © Crown Copyright (2019). All Rights reserved. NNB GenCo 0100060408.  
 Source: Environment Agency, 2019. © CEFAS, 2019

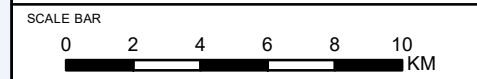


**DOCUMENT:**  
 SIZEWELL C  
 WFD COMPLIANCE ASSESSMENT  
 PART 2: MAIN DEVELOPMENT SITE  
 STAGE 3: FURTHER ASSESSMENT

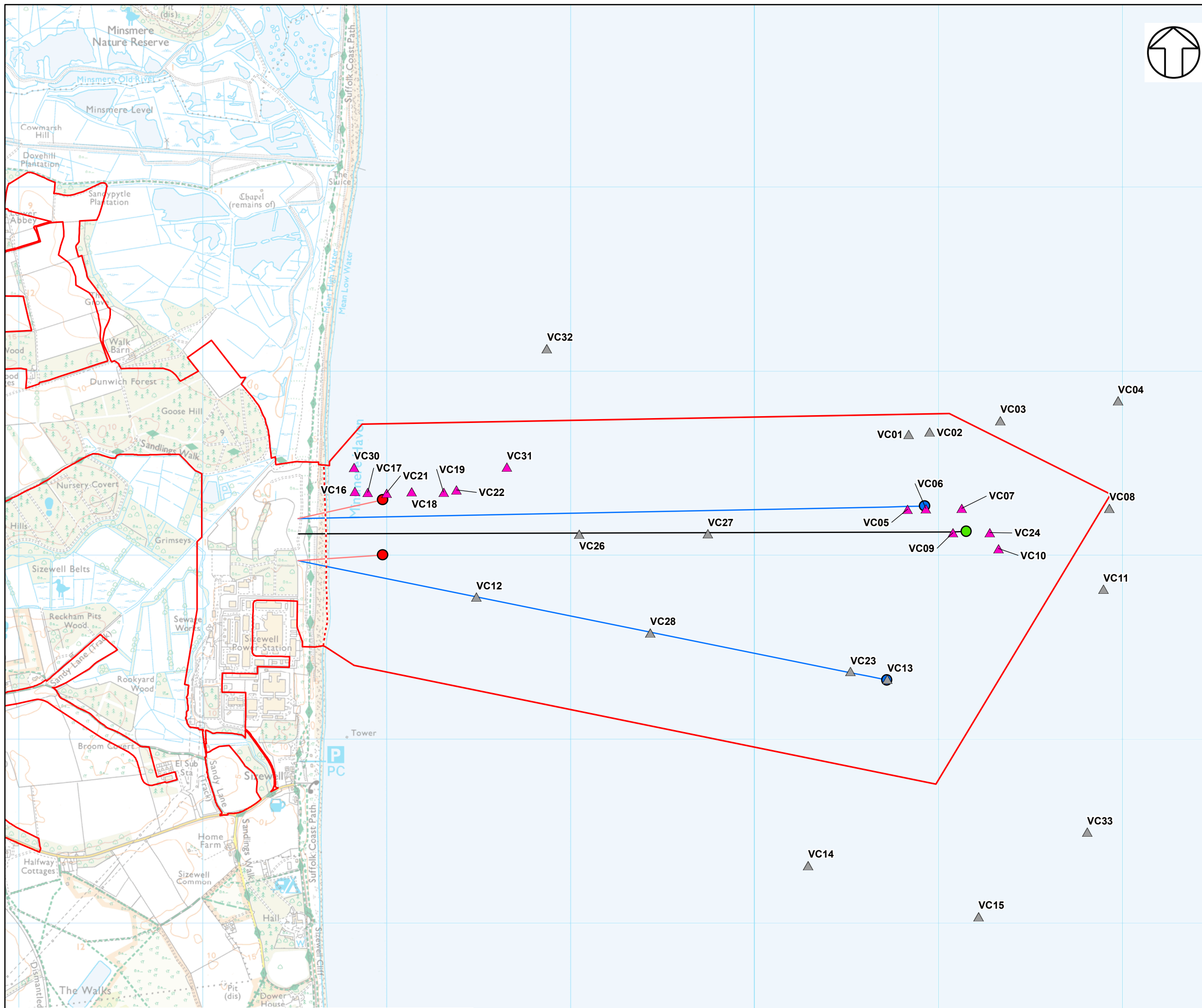
**DRAWING TITLE:**  
 DATA COLLECTION SITES

**DRAWING NO:**  
 FIGURE 2.11

**DATE:** JAN 2020      **DRAWN:** J.T.      **SCALE:** 1:225,000 @A3







**NOTES**

**KEY**

- SIZEWELL C MAIN DEVELOPMENT SITE BOUNDARY
- - - DEMARCATION LINE
- INTAKE TUNNEL
- COOLING WATER OUTFALL TUNNEL
- FISH RECOVERY AND RETURN (FRR)
- COOLING WATER DISCHARGE OUTFALL LOCATION
- COOLING WATER INTAKE LOCATION
- FISH RECOVERY AND RETURN (FRR) OUTFALLS
- ▲ CHEMICAL ANALYSIS
- ▲ NO CHEMICAL ANALYSIS

NOT PROTECTIVELY MARKED

**COPYRIGHT**  
 Reproduced from Ordnance Survey map with the permission of Ordnance Survey on behalf of the controller of Her Majesty's Stationary Office © Crown Copyright (2019). All Rights reserved. NNB GenCo 0100060408. © CEFAS, 2019.

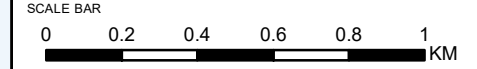


DOCUMENT:  
 SIZEWELL C  
 WFD COMPLIANCE ASSESSMENT  
 PART 2: MAIN DEVELOPMENT SITE  
 STAGE 3: FURTHER ASSESSMENT

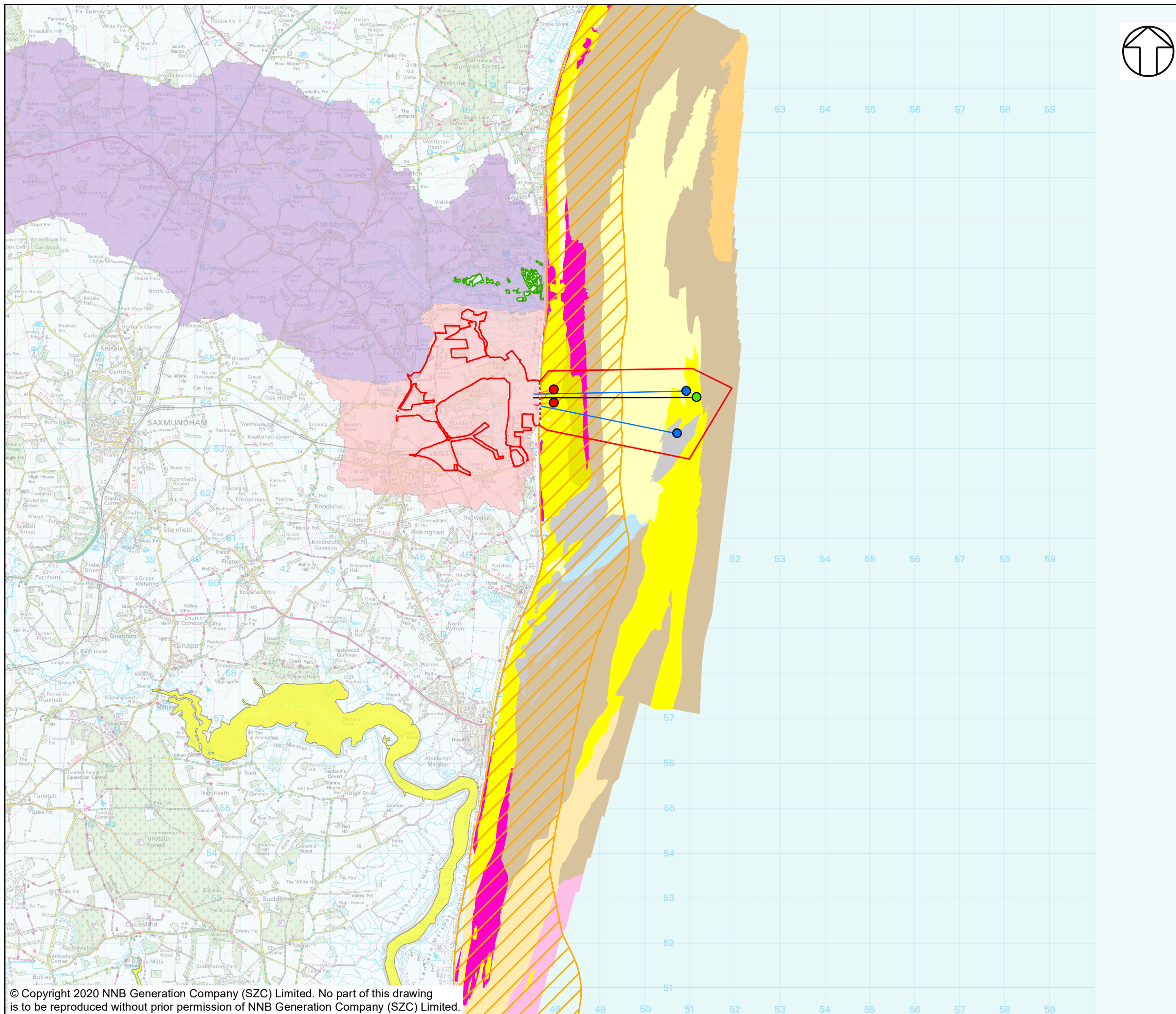
DRAWING TITLE:  
 SEDIMENT SAMPLE LOCATIONS

DRAWING NO:  
 FIGURE 2.12

DATE: JAN 2020      DRAWN: J.T.      SCALE: 1:20,000 @A3







**NOTES**

**KEY**

- SIZEWELL C MAIN DEVELOPMENT SITE BOUNDARY
- - - DEMARCATION LINE
- INTAKE TUNNEL
- COOLING WATER OUTFALL TUNNEL
- FISH RECOVERY AND RETURN (FRR) LOCATION
- COOLING WATER DISCHARGE OUTFALL LOCATION
- COOLING WATER INTAKE LOCATION
- FISH RECOVERY AND RETURN (FRR) OUTFALLS
- SUFFOLK WFD COASTAL WATER BODY
- WALBERSWICK MARSHES WFD COASTAL WATER BODY
- ALDE & ORE WFD TRANSITIONAL WATER BODY
- LEISTON BECK WFD RIVER WATER BODY CATCHMENT
- MINSMERE OLD RIVER WFD RIVER WATER BODY CATCHMENT

**EUNIS HABITAT MAP OF THE GREATER SIZEWELL BAY**

<ul style="list-style-type: none"> <li><span style="background-color: grey; border: 1px solid black; display: inline-block; width: 15px; height: 10px;"></span> A4.138 - MOLGULA MANHATTENSIS</li> <li><span style="background-color: magenta; border: 1px solid black; display: inline-block; width: 15px; height: 10px;"></span> A5.13 - INFRA LITTORAL COARSE SEDIMENT</li> <li><span style="background-color: pink; border: 1px solid black; display: inline-block; width: 15px; height: 10px;"></span> A5.135 - GLYCERA LAPIDUM</li> <li><span style="background-color: yellow; border: 1px solid black; display: inline-block; width: 15px; height: 10px;"></span> A5.23 - INFRA LITTORAL FINE SAND</li> <li><span style="background-color: orange; border: 1px solid black; display: inline-block; width: 15px; height: 10px;"></span> A5.231/A5.233 - INFRA LITTORAL MOBILE CLEAN SAND</li> <li><span style="background-color: lightblue; border: 1px solid black; display: inline-block; width: 15px; height: 10px;"></span> A5.233 - NEPHTYS CIRROSSA AND BATHYPOREIA SPP. IN INFRA LITTORAL SAND</li> </ul>	<ul style="list-style-type: none"> <li><span style="background-color: yellow; border: 1px solid black; display: inline-block; width: 15px; height: 10px;"></span> A5.233/A5.261 - NEPHTYS CIRROSSA AND BATHYPOREIA SPP. IN INFRA LITTORAL SAND</li> <li><span style="background-color: orange; border: 1px solid black; display: inline-block; width: 15px; height: 10px;"></span> A5.261 - ABRA ALBA AND NUCLA NITIDOSA IN CIRCALITTORAL MUDDY SAND OR SLIGHTLY MIXED SEDIMENT</li> <li><span style="background-color: brown; border: 1px solid black; display: inline-block; width: 15px; height: 10px;"></span> A5.331/A5.261 - NEPHTYS HOMBERGII AND MACOMA BALTHICA IN INFRA LITTORAL SANDY MUD</li> <li><span style="background-color: lightblue; border: 1px solid black; display: inline-block; width: 15px; height: 10px;"></span> A5.43 - INFRA LITTORAL MIXED SEDIMENTS</li> </ul>
--	---

NOT PROTECTIVELY MARKED

**COPYRIGHT**  
 Reproduced from Ordnance Survey map with the permission of Ordnance Survey on behalf of the controller of Her Majesty's Stationary Office © Crown Copyright (2019). All Rights reserved. NNB GenCo 0100060408.  
 Source: Environment Agency, 2019. © CEFAS, 2019

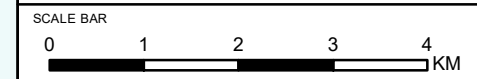


**DOCUMENT:**  
 SIZEWELL C  
 WFD COMPLIANCE ASSESSMENT  
 PART 2: MAIN DEVELOPMENT SITE  
 STAGE 3: FURTHER ASSESSMENT

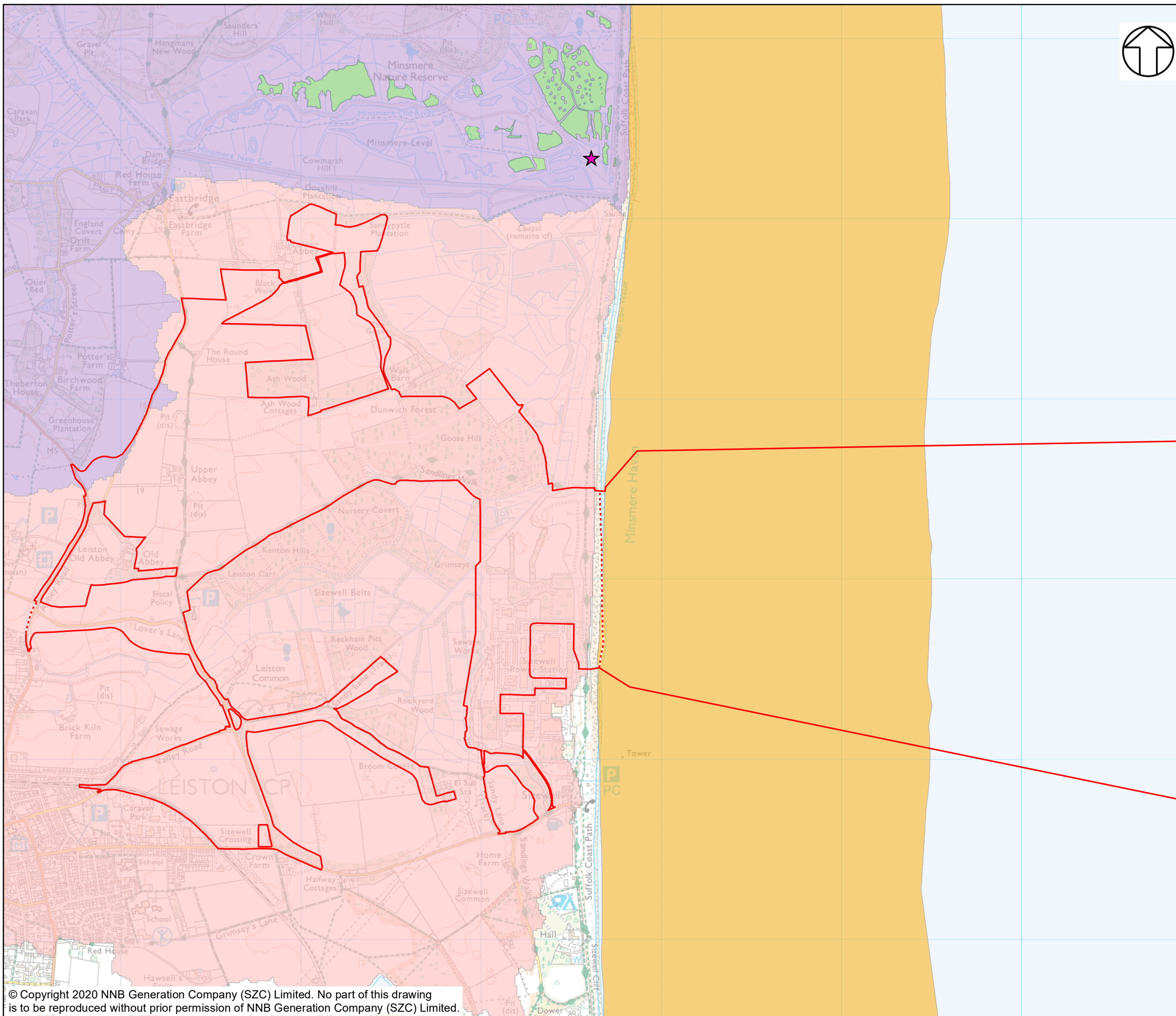
**DRAWING TITLE:**  
 SEABED BIOTOPES

**DRAWING NO.:**  
 FIGURE 2.13

**DATE:** MARCH 2020      **DRAWN:** J.T.      **SCALE:** 1:80,000 @A3







**NOTES**

**KEY**

- SIZEWELL C MAIN DEVELOPMENT SITE BOUNDARY
- DEMARCATION LINE
- LEISTON BECK WFD RIVER WATER BODY CATCHMENT
- MINSMERE OLD RIVER WFD RIVER WATER BODY CATCHMENT
- SUFFOLK WFD COASTAL WATER BODY
- WALBERSWICK MARSHES WFD COASTAL WATER BODY
- ★ TEMPERATURE AND SALINITY LOGGER IN SALINE LAGOON NEAR MINSMERE

NOT PROTECTIVELY MARKED

**COPYRIGHT**  
 Reproduced from Ordnance Survey map with the permission of Ordnance Survey on behalf of the controller of Her Majesty's Stationary Office © Crown Copyright (2019). All Rights reserved. NNB GenCo 0100060408.  
 Source: © Environment Agency, 2019.  
 © CEFAS, 2019

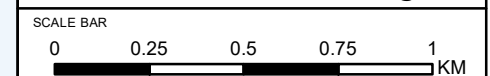


**DOCUMENT:**  
 SIZEWELL C  
 WFD COMPLIANCE ASSESSMENT  
 PART 2: MAIN DEVELOPMENT SITE  
 STAGE 3: FURTHER ASSESSMENT

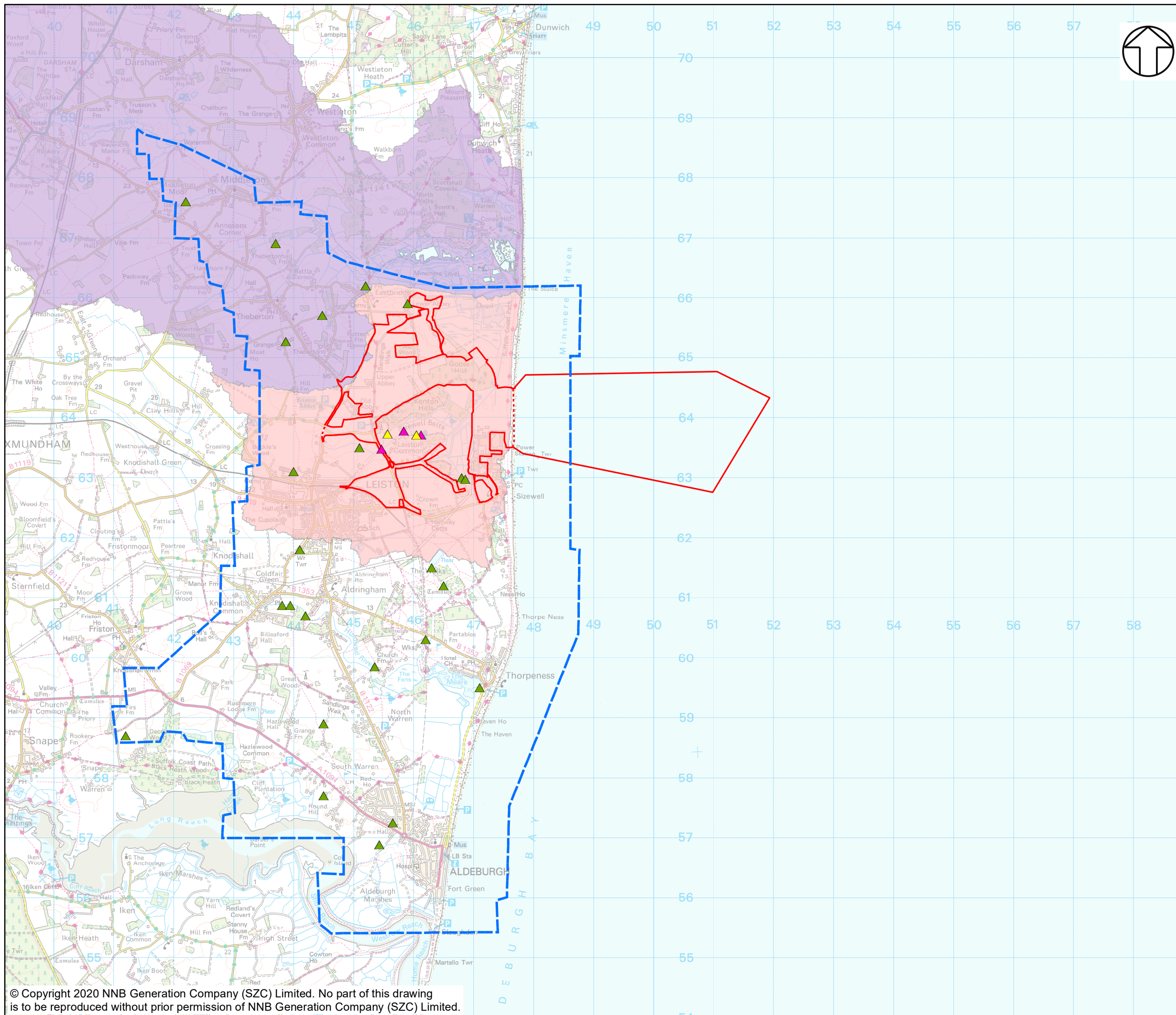
**DRAWING TITLE:**  
 LOCATION OF SALINE MONITORING POINT AGAINST WFD WATER BODIES

**DRAWING NO:**  
 FIGURE 2.14

**DATE:** JAN 2020      **DRAWN:** J.T.      **SCALE:** 1:20,000 @A3







**NOTES**

**KEY**

- SIZEWELL C MAIN DEVELOPMENT SITE BOUNDARY
- - - DEMARCATION LINE
- LEISTON BECK WFD RIVER WATER BODY CATCHMENT
- MINSMERE OLD RIVER WFD RIVER WATER BODY CATCHMENT
- MODEL DOMAIN OUTLINE
- ▲ ABSTRACTIONS
- ▲ CONTROL STRUCTURES
- ▲ GROUNDWATER ABSTRACTIONS

NOT PROTECTIVELY MARKED

**COPYRIGHT**  
 Reproduced from Ordnance Survey map with the permission of Ordnance Survey on behalf of the controller of Her Majesty's Stationery Office © Crown Copyright (2019). All Rights reserved. NNB GenCo 0100060408.  
 Source: © Environment Agency, 2019.  
 © CEFAS, 2019



**DOCUMENT:**  
 SIZEWELL C  
 WFD COMPLIANCE ASSESSMENT  
 PART 2: MAIN DEVELOPMENT SITE  
 STAGE 3: FURTHER ASSESSMENT

**DRAWING TITLE:**  
 MODEL DOMAIN, ABSTRACTIONS  
 AND CONTROL STRUCTURES  
 ACCOUNTED FOR IN THE FEFLOW MODEL

**DRAWING NO:**  
 FIGURE 2.15

**DATE:** JAN 2020      **DRAWN:** J.T.      **SCALE:** 1:60,000 @A3

