



The Sizewell C Project

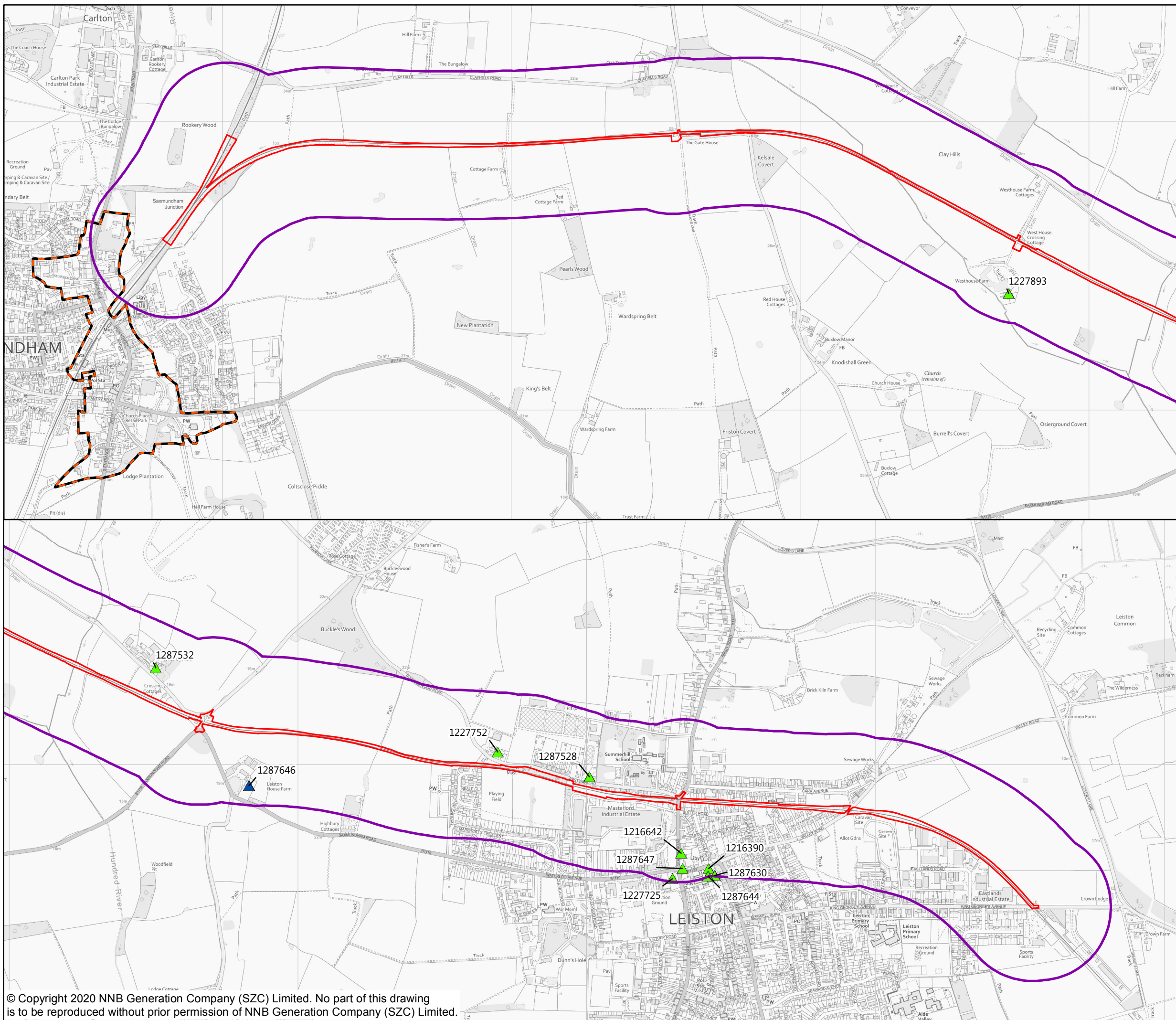
6.10 Volume 9 Rail Chapter 9 Terrestrial Historic Environment Figures 9.1 - 9.4

Revision: 1.0
Applicable Regulation: Regulation 5(2)(a)
PINS Reference Number: EN010012

May 2020

Planning Act 2008
Infrastructure Planning (Applications: Prescribed
Forms and Procedure) Regulations 2009





NOTES

KEY

- SAXMUNDHAM TO LEISTON BRANCH LINE UPGRADES DEVELOPMENT SITE BOUNDARY
- 250M STUDY AREA
- ▲ GRADE II LISTED BUILDING
- ▲ GRADE II* LISTED BUILDING
- SAXMUNDHAM CONSERVATION AREA

NOT PROTECTIVELY MARKED

COPYRIGHT

Reproduced from Ordnance Survey map with the permission of Ordnance Survey on behalf of the controller of Her Majesty's Stationery Office © Crown Copyright (2019). All Rights reserved. NNB GenCo 0100060408.
 The Historic England GIS Data contained in this material was obtained in January 2019. The most publicly available up to date Historic England GIS Data can be obtained from <http://www.historicengland.org.uk> © Historic England 2019. The Conservation Area boundary was digitised from East Suffolk Conservation Area Appraisal dated March 2016.

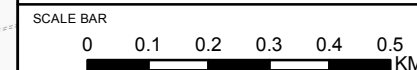


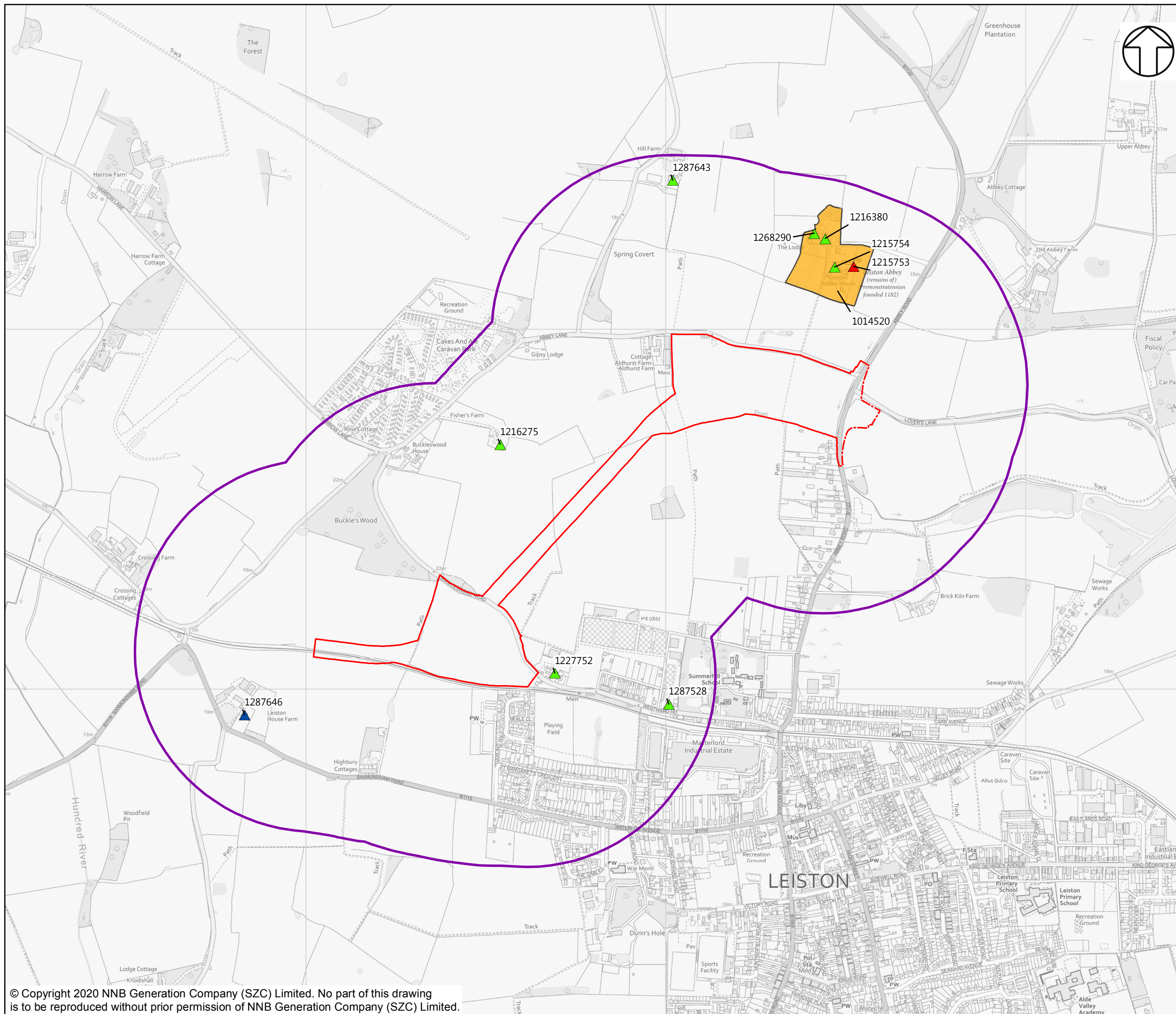
DOCUMENT:
 SIZEWELL C
 ENVIRONMENTAL STATEMENT
 VOLUME 9
 CHAPTER 9
 TERRESTRIAL HISTORIC ENVIRONMENT

DRAWING TITLE:
 RAIL IMPROVEMENTS - LEISTON BRANCH
 DESIGNATED HERITAGE ASSETS

DRAWING NO:
 FIGURE 9.1

DATE: JAN 2020 DRAWN: V.P. SCALE: 1:12,500 @A3





NOTES
SEE GAZETTEER (APPENDIX 9A) FOR DESIGNATED ASSET NUMBERS AND DESCRIPTIONS

KEY

- GREEN RAIL ROUTE DEVELOPMENT SITE BOUNDARY
- - - VOLUME 9 ASSESSMENT AREA
- 500M STUDY AREA
- ▲ GRADE I LISTED BUILDING
- ▲ GRADE II* LISTED BUILDING
- ▲ GRADE II LISTED BUILDING
- SCHEDULED MONUMENT

NOT PROTECTIVELY MARKED

COPYRIGHT
Reproduced from Ordnance Survey map with the permission of Ordnance Survey on behalf of the controller of Her Majesty's Stationary Office © Crown Copyright (2019). All Rights reserved. NNB GenCo 0100060408.
The Historic England GIS Data contained in this material was obtained in January 2019. The most publicly available up to date Historic England GIS Data can be obtained from <http://www.historicengland.org.uk> © Historic England 2019.

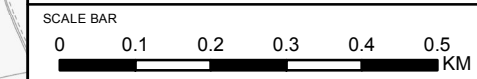


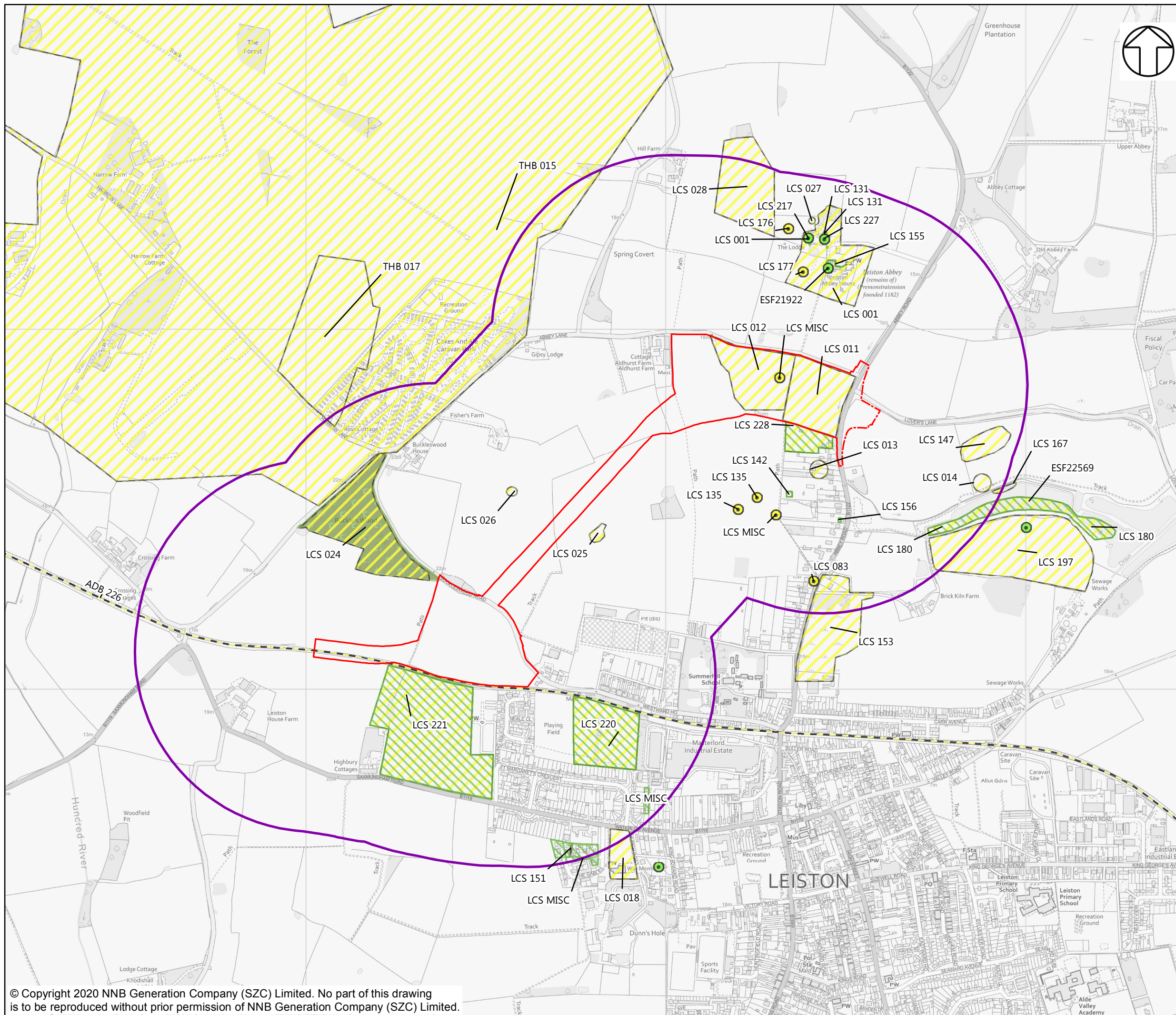
DOCUMENT:
SIZEWELL C
ENVIRONMENTAL STATEMENT
VOLUME 9
CHAPTER 9
TERRESTRIAL HISTORIC ENVIRONMENT

DRAWING TITLE:
DESIGNATED HERITAGE ASSETS

DRAWING NO:
FIGURE 9.2

DATE: JAN 2020 **DRAWN:** V.P. **SCALE:** 1:10,000 @A3





- NOTES**
SEE GAZETTEER (APPENDIX 9A) FOR HERITAGE ASSET NUMBERS AND DESCRIPTIONS
- KEY**
- GREEN RAIL ROUTE DEVELOPMENT SITE BOUNDARY
 - - - VOLUME 9 ASSESSMENT AREA
 - 500M STUDY AREA
 - HER MONUMENT RECORD
 - HER MONUMENT RECORD
 - HER ARCHAEOLOGICAL EVENT
 - HER ARCHAEOLOGICAL EVENT
 - ANCIENT WOODLAND

NOT PROTECTIVELY MARKED

COPYRIGHT
Reproduced from Ordnance Survey map with the permission of Ordnance Survey on behalf of the controller of Her Majesty's Stationary Office © Crown Copyright (2019). All Rights reserved. NNB GenCo 0100060408.
The Suffolk County Council Historic Environment Record Data contained in this material was obtained on 13/08/2018. ©Suffolk County Council 2018.

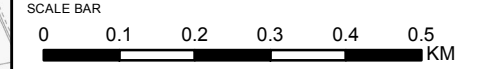


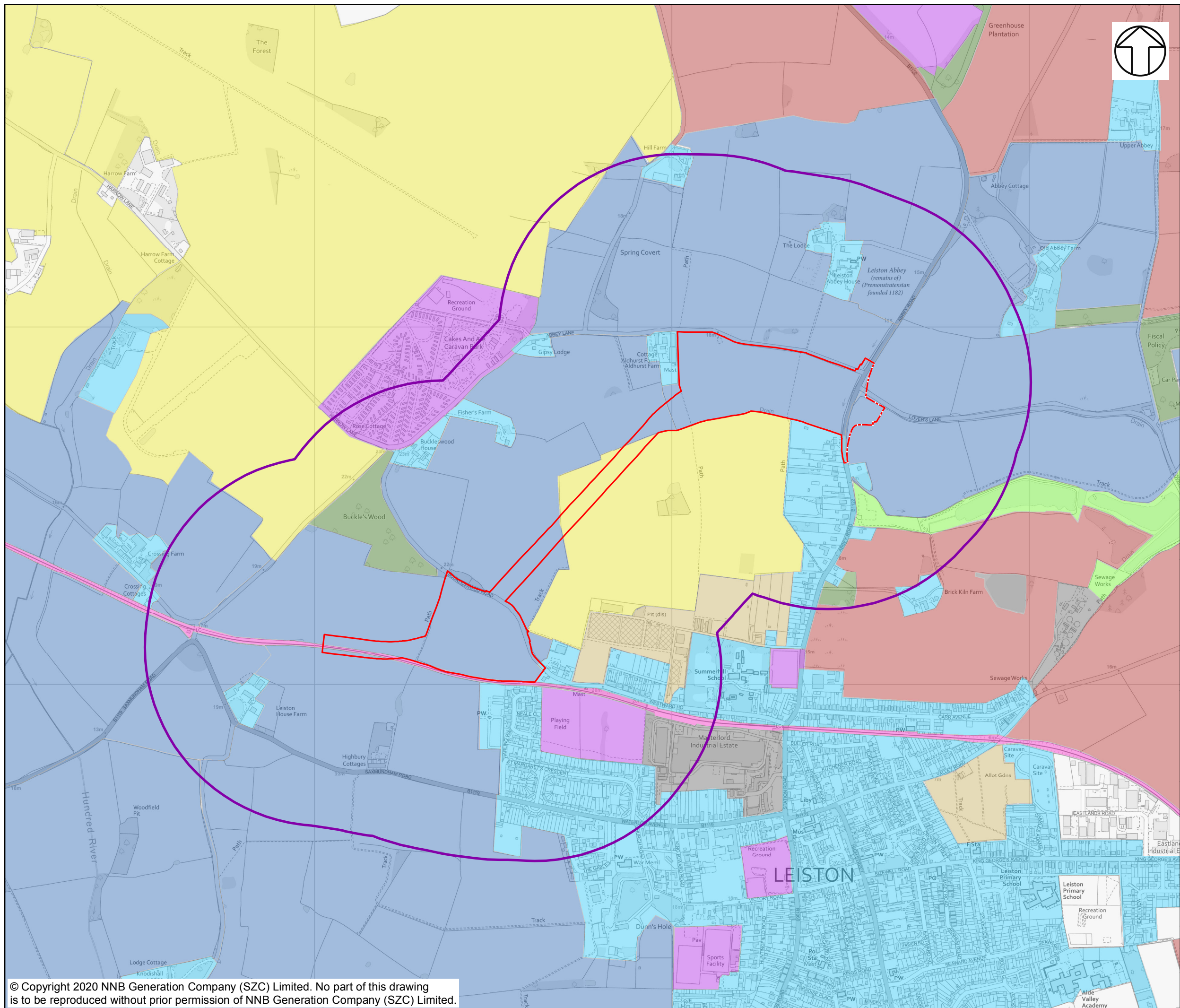
DOCUMENT:
SIZEWELL C
ENVIRONMENTAL STATEMENT
VOLUME 9
CHAPTER 9
TERRESTRIAL HISTORIC ENVIRONMENT

DRAWING TITLE:
NON-DESIGNATED HERITAGE RECORDS

DRAWING NO:
FIGURE 9.3

DATE: JAN 2020 **DRAWN:** V.P. **SCALE:** 1:10,000 @A3





NOTES

KEY

- GREEN RAIL ROUTE DEVELOPMENT
- - - SITE BOUNDARY
- - - VOLUME 9 ASSESSMENT AREA
- 500M STUDY AREA
- HISTORIC LANDSCAPE CHARACTER AREAS**
- 18TH-CENTURY AND LATER ENCLOSURE
- BUILT UP AREA
- COMMUNICATIONS
- HORTICULTURE
- INDUSTRIAL
- MEADOW OR MANAGED WETLAND
- POST-1950 AGRICULTURAL LANDSCAPE
- POST-MEDIEVAL PARK AND LEISURE
- PRE-18TH-CENTURY ENCLOSURE
- WOODLAND

NOT PROTECTIVELY MARKED

COPYRIGHT

Reproduced from Ordnance Survey map with the permission of Ordnance Survey on behalf of the controller of Her Majesty's Stationery Office © Crown Copyright (2019). All Rights reserved. NNB GenCo 0100060408. The Historic Landscape GIS data contained within this material was obtained on 10/08/2018. ©Suffolk County Council 2018.



DOCUMENT:
 SIZEWELL C PROJECT
 ENVIRONMENTAL STATEMENT
 VOLUME 9
 CHAPTER 9
 TERRESTRIAL HISTORIC ENVIRONMENT

DRAWING TITLE:
 HISTORIC LANDSCAPE CHARACTER

DRAWING NO:
 FIGURE 9.4

DATE: JAN 2020 DRAWN: V.P. SCALE: 1:10,000 @A3

