



The Sizewell C Project

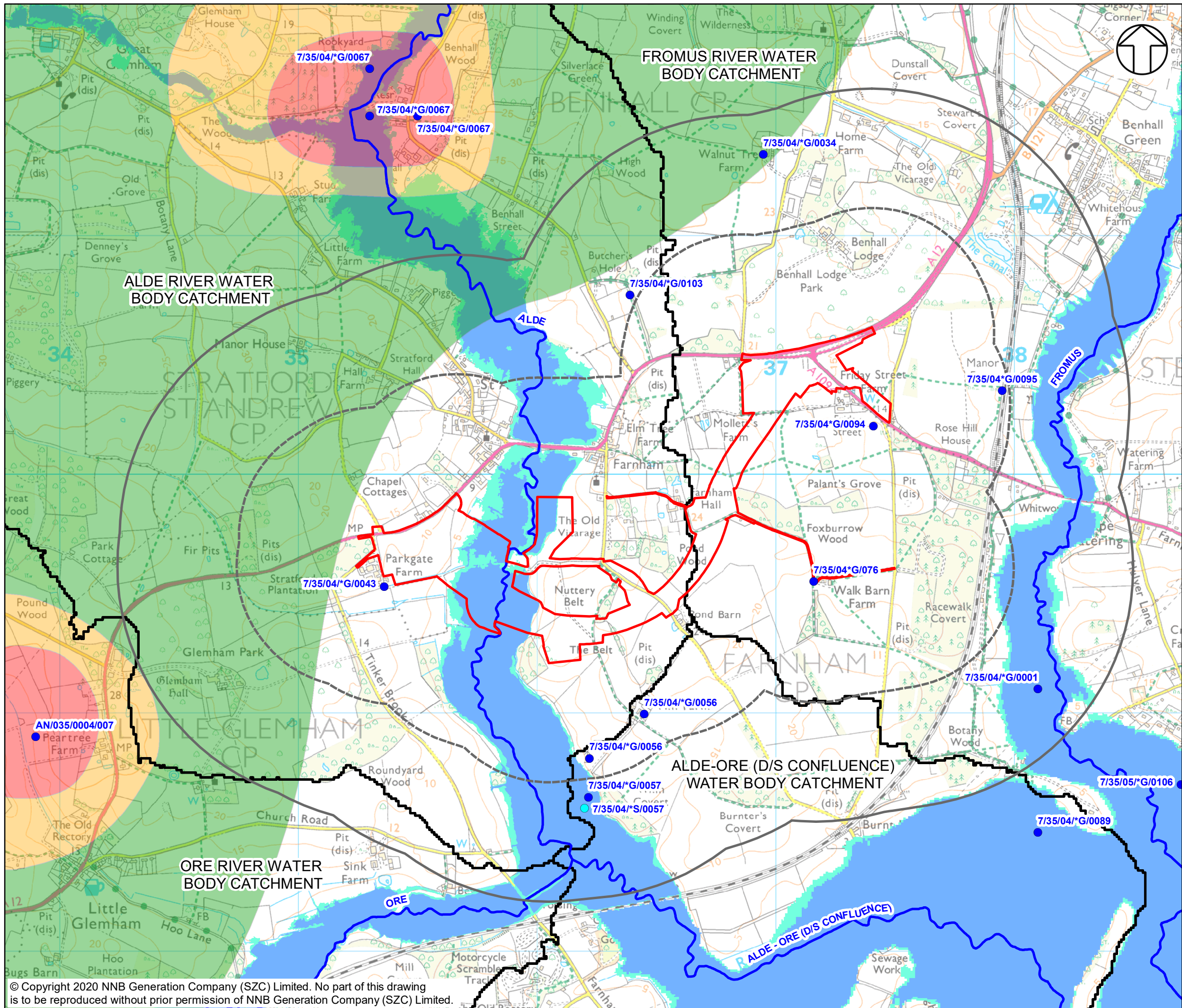
6.6 Volume 5 Two Village Bypass Chapter 12 Groundwater and Surface Water Figure 12.1

Revision: 1.0
Applicable Regulation: Regulation 5(2)(a)
PINS Reference Number: EN010012

May 2020

Planning Act 2008
Infrastructure Planning (Applications: Prescribed
Forms and Procedure) Regulations 2009





NOTES
 THE WAVENEY AND EAST SUFFOLK CHALK AND CRAG GROUNDWATER BODY ENCOMPASSES THE ENTIRE FIGURE.

THE SOURCE PROTECTION ZONES REPRESENT DATA FROM THE ENVIRONMENT AGENCY, THIS DIFFERS TO THE DATA PRESENTED ON THE MAGIC WEBSITE.

- KEY**
- TWO VILLAGE BYPASS DEVELOPMENT SITE BOUNDARY
 - INNER STUDY AREA (500M)
 - OUTER STUDY AREA (1KM)
 - WFD SURFACE WATER BODY CATCHMENT
 - SOURCE PROTECTION ZONE 1
 - SOURCE PROTECTION ZONE 2
 - SOURCE PROTECTION ZONE 3
 - FLOOD ZONE 2
 - FLOOD ZONE 3
 - WFD WATERCOURSE
 - GROUNDWATER ABSTRACTION
 - SURFACE WATER ABSTRACTION

NOT PROTECTIVELY MARKED

COPYRIGHT
 Reproduced from Ordnance Survey map with the permission of Ordnance Survey on behalf of the controller of Her Majesty's Stationary Office © Crown Copyright (2019). All Rights reserved. NNB GenCo 0100060408.

Contains public sector information licensed under the Open Government Licence v3.0.

Contains abstraction information licensed under the Landmark Information Group Limited 2019 Copyright.



DOCUMENT:
 SIZEWELL C
 ENVIRONMENTAL STATEMENT
 VOLUME 5
 CHAPTER 12
 GROUNDWATER AND SURFACE WATER

DRAWING TITLE:
 GROUNDWATER AND SURFACE WATER BASELINE

DRAWING NO:
 FIGURE 12.1

DATE: JAN 2020 **DRAWN:** S.C.H **SCALE:** 1:15,000 @A3

