



The Sizewell C Project

6.5 Volume 4 Southern Park and Ride Chapter 2 Description of the Southern Park and Ride Figures 2.1 - 2.6

Revision: 1.0
Applicable Regulation: Regulation 5(2)(a)
PINS Reference Number: EN010012

May 2020

Planning Act 2008
Infrastructure Planning (Applications: Prescribed
Forms and Procedure) Regulations 2009





NOTES

KEY

- SOUTHERN PARK AND RIDE DEVELOPMENT SITE BOUNDARY
- SECURITY FENCE
- ECOLOGICAL FENCE
- ACCESS ROAD
- PEDESTRIAN WALKWAY / ZONE
- WELFARE/SECURITY BUILDINGS
- SHELTERS (BUS/CYCLE)
- LIGHTING COLUMNS
- GRASSED SPOIL BUNDS
- EXISTING VEGETATION
- PROPOSED PLANTING
- EXISTING DRY POND
- GRASSED AREAS
- SURFACE WATER ATTENUATION
- SWALE
- DITCH
- BUFFER ZONE
- TRAFFIC INCIDENT MANAGEMENT AREA
- EXISTING PUBLIC RIGHT OF WAY

NOT PROTECTIVELY MARKED

COPYRIGHT
 Reproduced from Ordnance Survey map with the permission of Ordnance Survey on behalf of the controller of Her Majesty's Stationery Office © Crown Copyright (2019). All Rights reserved. NNB GenCo 0100060408.
 Esri, DigitalGlobe, GeoEye, Earthstar Geographics, CNES/Airbus DS, USDA, USGS, AeroGRID, IGN, and the GIS User Community.
 PROW data sourced from Suffolk CC on 27/02/2019 under OGL v3.0 are an interpretation of the Definitive Map and Statement, not the Definitive Map itself, and should not be relied on for determining the position or alignment of any public right of way. The data contains Ordnance Survey data © Crown copyright and database right 2019.

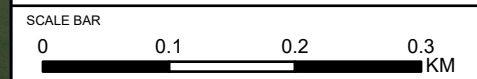


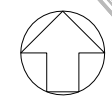
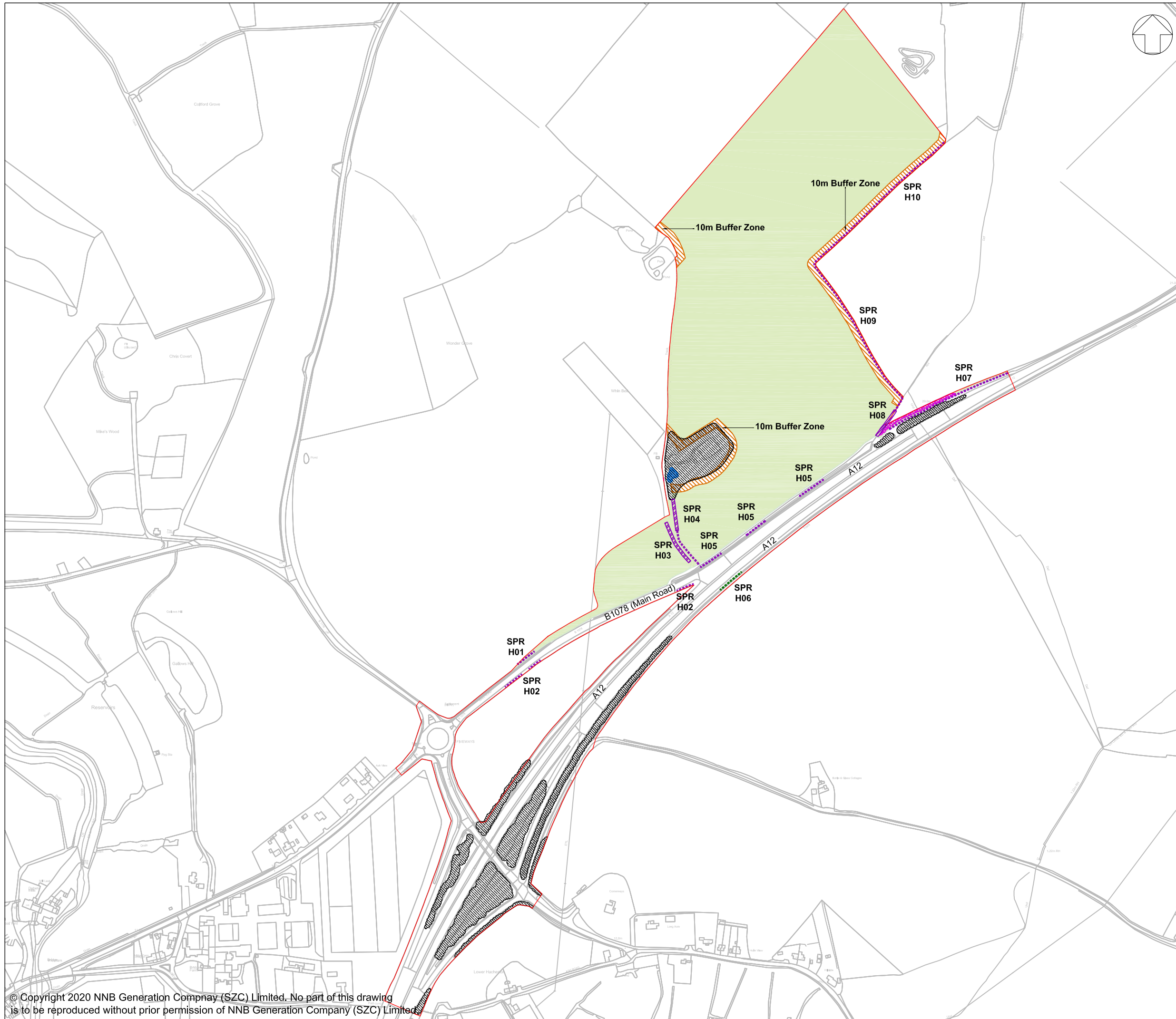
DOCUMENT:
 SIZEWELL C
 ENVIRONMENTAL STATEMENT
 VOLUME 4
 CHAPTER 2
 DESCRIPTION OF THE SOUTHERN PARK AND RIDE

DRAWING TITLE:
 ILLUSTRATIVE MASTERPLAN FOR THE SOUTHERN PARK AND RIDE AT WICKHAM MARKET

DRAWING NO:
 FIGURE 2.1

DATE: JAN 2020 DRAWN: V.W. SCALE: 1:6,000 @A3





NOTES:

1. FOR DETAILS OF PERMANENT AND TEMPORARY POSSESSION WITHIN ORDER LIMITS REFER TO LAND PLANS.
2. THE LOCATIONS OF FEATURES SHOWN ARE INDICATIVE ONLY. EXACT LOCATIONS TO BE CONFIRMED ON SITE.
3. ADDITIONAL FEATURES MAY BE PRESENT ON SITE THAT HAVE NOT BEEN IDENTIFIED.
4. THIS DRAWING IS BASED ON AERIAL PHOTOGRAPHS AND SITE VISITS.
5. FOR HEDGEROW REFERENCES (H01-H10) PLEASE REFER TO SCHEDULE 21 OF DRAFT DCO (DOC REF 3.1)
6. WITHIN THE AREA SHOWN AS 'GENERAL SITE CLEARANCE' NOT EVERYTHING WOULD BE CLEARED. SITE CLEARANCE WOULD BE THE MINIMUM REQUIRED TO UNDERTAKE THE WORKS. GENERAL SITE CLEARANCE CONSISTS OF REMOVAL OF OVERGROWN VEGETATION IN VERGES AND TOPSOIL REMOVAL.

KEY:

- SOUTHERN PARK AND RIDE DEVELOPMENT SITE BOUNDARY
- RETAINED HEDGEROW
- RETAINED IMPORTANT HEDGEROW (HEDGEROW REGULATIONS 1997)
- RETAINED TREES AND SHRUBS
- DRY POND TO BE RETAINED
- BUFFER ZONE
- AREA OF GENERAL SITE CLEARANCE FOR CONSTRUCTION WORKS WITHIN THE SITE
- VEGETATION TO BE REMOVED
- IMPORTANT HEDGEROW (HEDGEROW REGULATIONS 1997) TO BE REMOVED

NOT PROTECTIVELY MARKED

COPYRIGHT:

Reproduced from Ordnance Survey map with the permission of Ordnance Survey on behalf of the controller of Her Majesty's Stationary Office © Crown copyright (2019). All Rights reserved. NNB GenCo Licence: 0100060408



DOCUMENT:

SIZEWELL C ENVIRONMENTAL STATEMENT VOLUME 4, CHAPTER 2 DESCRIPTION OF THE SOUTHERN PARK AND RIDE

DRAWING TITLE:

SITE CLEARANCE PLAN

DRAWING NO:

FIGURE 2.2

DATE:

JAN 2020

DRAWN:

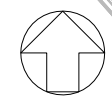
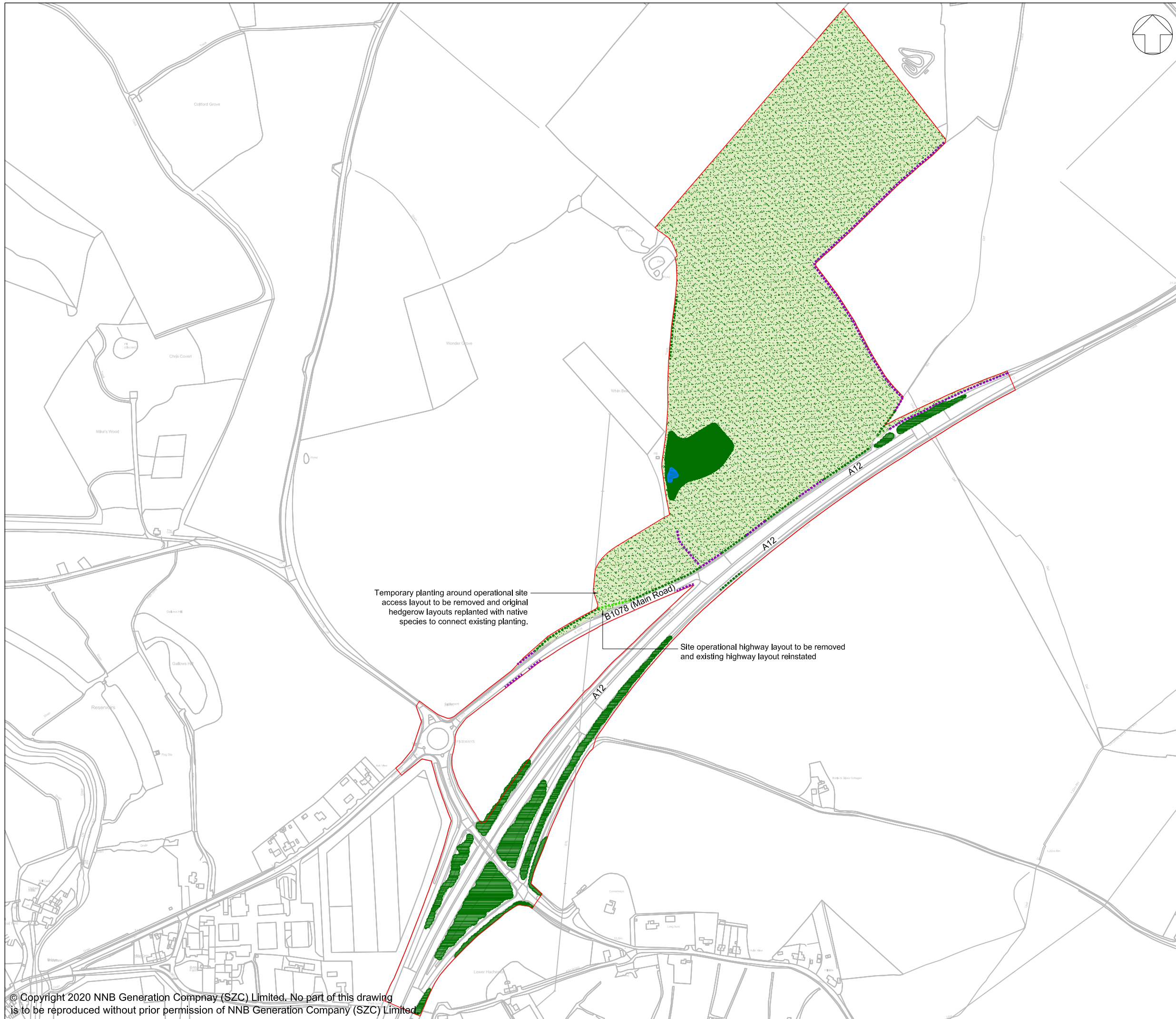
J.B.

SCALE:

1:5000 @ A3

SCALE BAR:





NOTES:

KEY:

- SOUTHERN PARK AND RIDE DEVELOPMENT SITE BOUNDARY
- SOFTWORKS - EXISTING**
- RETAINED HEDGEROW
- RETAINED IMPORTANT HEDGEROW (HEDGEROW REGULATIONS 1997)
- RETAINED AND ENHANCED TREES AND SHRUBS
- DRY POND TO BE RETAINED
- SOFTWORKS - PROPOSED**
- HEDGEROW PLANTING
- AGRICULTURAL LAND REINSTATED

NOT PROTECTIVELY MARKED

COPYRIGHT:
 Reproduced from Ordnance Survey map with the permission of Ordnance Survey on behalf of the controller of Her Majesty's Stationary Office © Crown copyright (2019). All Rights reserved. NNB GenCo Licence: 0100060408



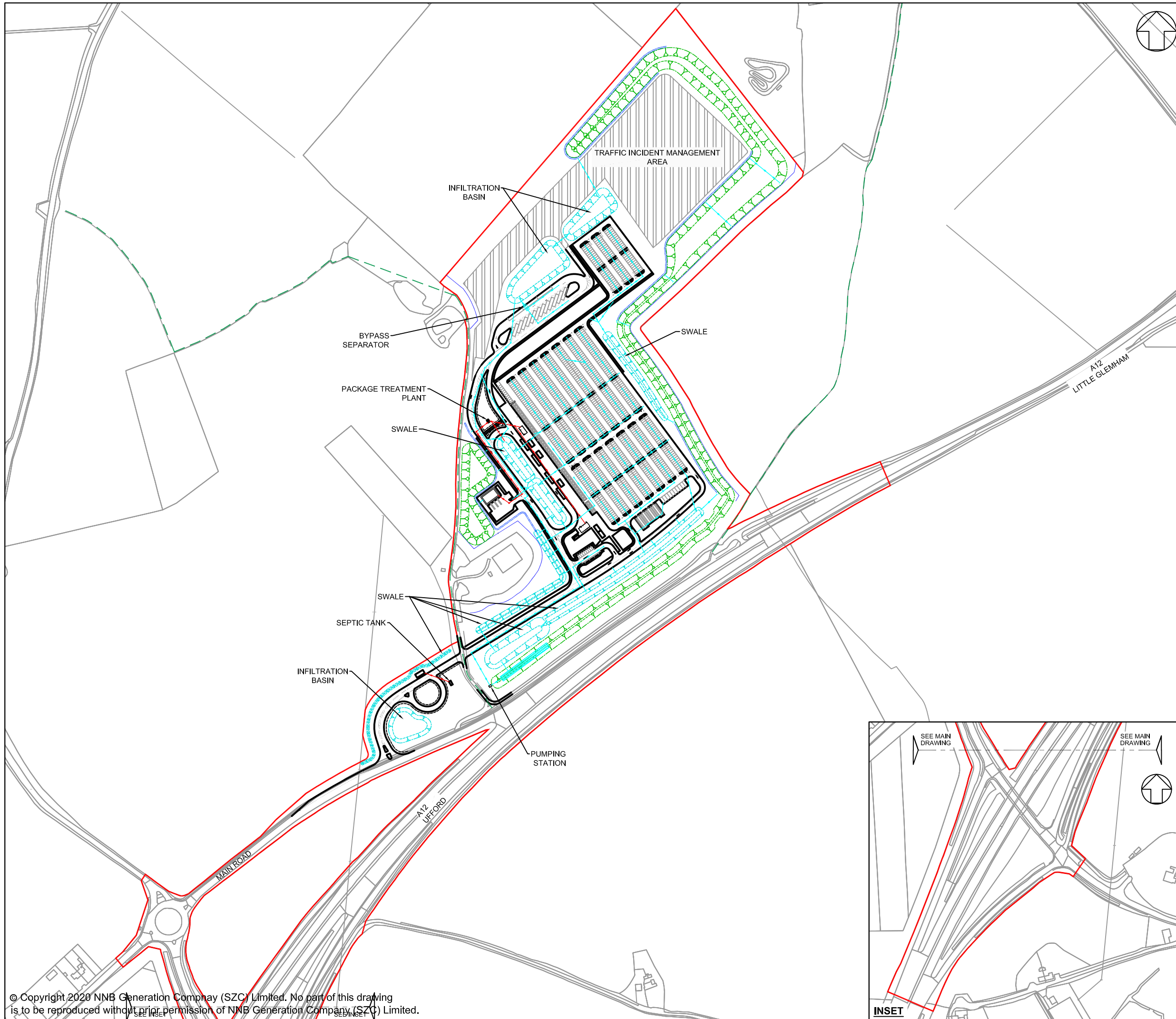
DOCUMENT:
 SIZEWELL C ENVIRONMENTAL STATEMENT
 VOLUME 4, CHAPTER 2
 DESCRIPTION OF THE SOUTHERN PARK AND RIDE

DRAWING TITLE:
 REMOVAL AND REINSTATEMENT PLAN

DRAWING NO:
 FIGURE 2.3

DATE: JAN 2020 **DRAWN:** J.B. **SCALE:** 1:5000 @ A3





NOTES:

1. Do not scale from this drawing. All dimensions are in metres unless noted otherwise.

KEY:

- SOUTHERN PARK AND RIDE DEVELOPMENT SITE BOUNDARY
- BUFFER ZONE
- SWALE / INFILTRATION BASIN (INDICATIVE)
- LANDSCAPE BUND
- PROPOSED SURFACE WATER DRAINAGE (INDICATIVE)
- PROPOSED FOUL WATER DRAINAGE (INDICATIVE)
- PROPOSED GEOCELLULAR UNDERGROUND STORAGE (64M x 6M) (INDICATIVE)
- PROPOSED DITCH (INDICATIVE)
- PROPOSED BYPASS SEPARATOR (INDICATIVE)

NOT PROTECTIVELY MARKED

COPYRIGHT:
 Reproduced from Ordnance Survey map with the permission of Ordnance Survey on behalf of the controller of Her Majesty's Stationery Office © Crown copyright (2019). All Rights reserved. NNB GenCo Licence: 0100060408

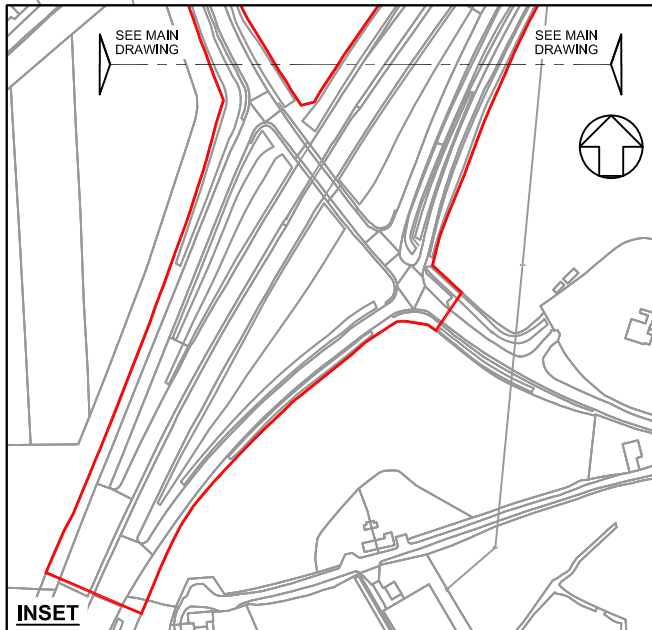
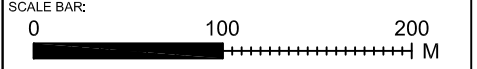


DOCUMENT:
 SIZEWELL C ENVIRONMENTAL STATEMENT
 VOLUME 4
 CHAPTER 2
 DESCRIPTION OF THE SOUTHERN PARK AND RIDE

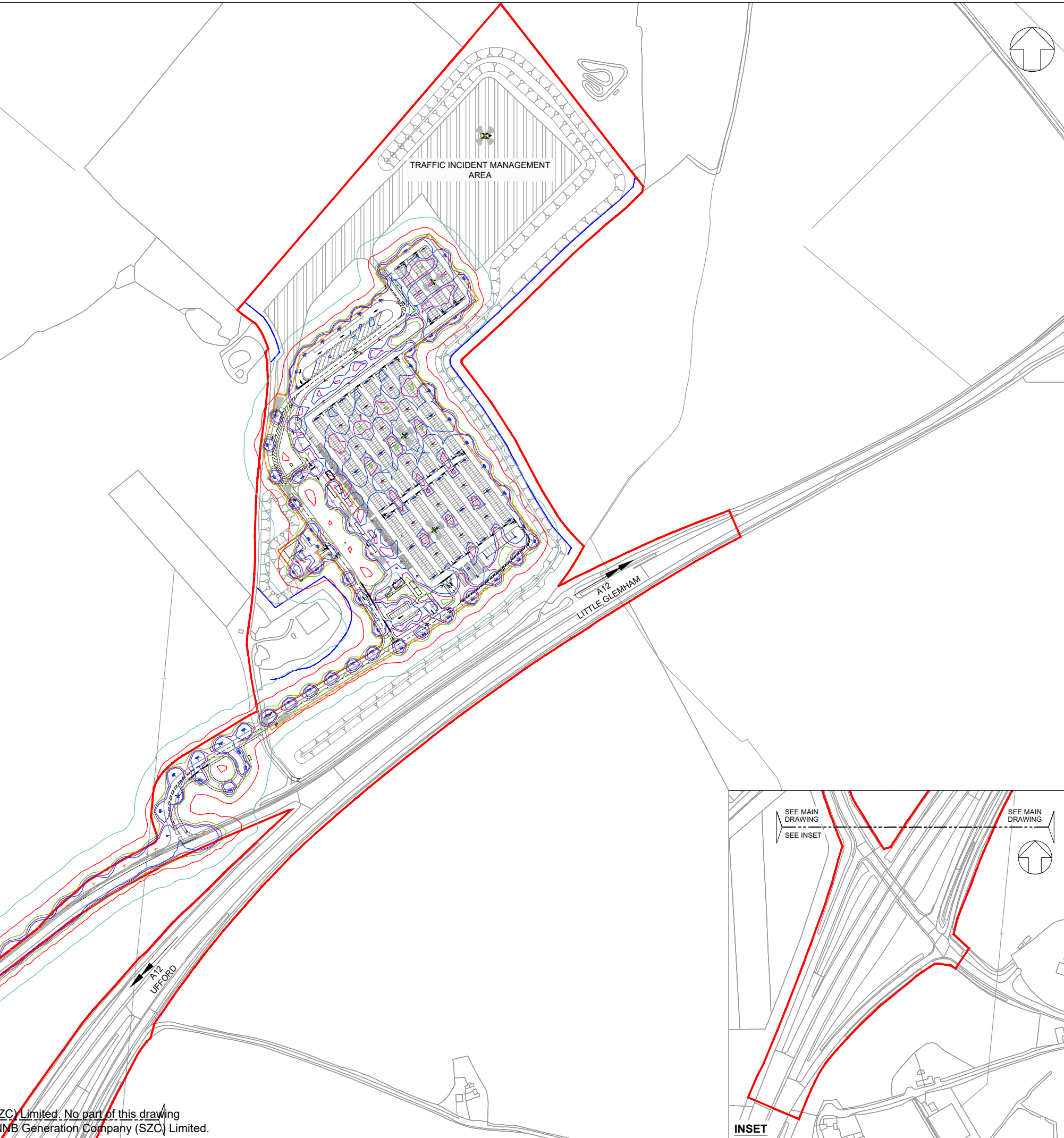
DRAWING TITLE:
 ILLUSTRATIVE DRAINAGE PLAN FOR THE SOUTHERN PARK AND RIDE AT WICKHAM MARKET

DRAWING NO:
 FIGURE 2.4

DATE: JAN 2020 **DRAWN:** N.K.S. **SCALE:** 1:4,000 @A3



LANTERN SPECIFICATION	
LANTERN TYPE	URBIS AMPERA M1 LANTERN
LUMINAIRE REFERENCE	AMPERA/M1/5068/32LED/350mA/3950LUMEN
COMPLETE WITH:	
32 LED'S	
NEMA PHOTOCELL	
TYPE 5068 REFLECTOR	
FLAT GLASS PROTECTOR	
MOUNTING DETAILS	
HEIGHT	6.0 METRES
INCLINATION	0 DEGREE'S (WITH RESPECT TO HORIZONTAL PLANE)
BRACKET LENGTH	0.5 METRE
LAMP OUTPUT	3,950 LUMENS
LANTERN SPECIFICATION	
LANTERN TYPE	URBIS AMPERA M2 LANTERN
LUMINAIRE REFERENCE	AMPERA/M2/5068/16LED/500mA/2570LUMEN
COMPLETE WITH:	
16 LED'S	
NEMA PHOTOCELL	
TYPE 5068 REFLECTOR	
FLAT GLASS PROTECTOR	
MOUNTING DETAILS	
HEIGHT	6.0 METRES
INCLINATION	0 DEGREE'S (WITH RESPECT TO HORIZONTAL PLANE)
BRACKET LENGTH	0.5 METRE
LAMP OUTPUT	2,570 LUMENS
LANTERN SPECIFICATION	
LANTERN TYPE	URBIS AMPERA M3 LANTERN
LUMINAIRE REFERENCE	AMPERA/M3/5119/32LED/350mA/3980LUMEN
COMPLETE WITH:	
32 LED'S	
NEMA PHOTOCELL	
TYPE 5119 REFLECTOR	
FLAT GLASS PROTECTOR	
MOUNTING DETAILS	
HEIGHT	6.0 METRES
INCLINATION	0 DEGREE'S (WITH RESPECT TO HORIZONTAL PLANE)
BRACKET LENGTH	0.5 METRE
LAMP OUTPUT	3,980 LUMENS
LANTERN SPECIFICATION	
LANTERN TYPE	URBIS AMPERA M4 LANTERN
LUMINAIRE REFERENCE	AMPERA/M4/5068/48LED/350mA/5920LUMEN
COMPLETE WITH:	
48 LED'S	
NEMA PHOTOCELL	
TYPE 5068 REFLECTOR	
FLAT GLASS PROTECTOR	
MOUNTING DETAILS	
HEIGHT	6.0 METRES
INCLINATION	0 DEGREE'S (WITH RESPECT TO HORIZONTAL PLANE)
BRACKET LENGTH	0.5 METRE
LAMP OUTPUT	5,920 LUMENS
LANTERN SPECIFICATION	
LANTERN TYPE	URBIS AMPERA M5 LANTERN
LUMINAIRE REFERENCE	AMPERA/M5/5119/48LED/500mA/8000LUMEN
COMPLETE WITH:	
48 LED'S	
NEMA PHOTOCELL	
TYPE 5119 REFLECTOR	
FLAT GLASS PROTECTOR	
MOUNTING DETAILS	
HEIGHT	6.0 METRES
INCLINATION	0 DEGREE'S (WITH RESPECT TO HORIZONTAL PLANE)
BRACKET LENGTH	0.5 METRE
LAMP OUTPUT	8,000 LUMENS
LANTERN SPECIFICATION	
LANTERN TYPE	URBIS AMPERA M6 LANTERN
LUMINAIRE REFERENCE	AMPERA/M6/5117/64LED/700mA/14160LUMEN
COMPLETE WITH:	
64 LED'S	
NEMA PHOTOCELL	
TYPE 5117 REFLECTOR	
FLAT GLASS PROTECTOR	
MOUNTING DETAILS	
HEIGHT	10.0 METRES
INCLINATION	0 DEGREE'S (WITH RESPECT TO HORIZONTAL PLANE)
BRACKET LENGTH	1.5 METRE
LAMP OUTPUT	14,160 LUMENS



NOTES:

- Do not scale from this drawing. All dimensions are in metres unless noted otherwise.
- Luminaires shall be of a type that controls the distribution of light and directs the light downwards onto the roads and footways and that avoids light and glare overspill and sky glow.
- The represented Isolux lighting contours do not take into account the existing luminaires located by the approaching arm of the B1078/B1116 intersection.
- The adoptable road network, associated with the main road, is designed to BS 5489-1. This is based on lighting classifications determined by WSP, being class M4.
- The non adoptable incoming access roads and site roads are designed to BS5489-1, with the road lighting designed to class P3 and P4 respectively.
- The parking area is designed to comply with BS 5489-1, with the main parking areas designed for Medium Traffic classification and lower usage areas for light traffic classification, as per BS 5489-1.
- A maintenance factor of 0.75 has been used in the lighting design simulation.
- Isolux contours indicated on the layout are reflective of a maintenance factor 1.0.
- Lighting columns within parking bay areas to be located on corners of parking bays and shall be provided with red and white reflective bands at 0.3m centres between 0.6m and 1.5m above proposed finished level.
- Light columns shall be located at the rear of footways unless agreed otherwise. In no circumstances shall the setback to light column face be less than 0.45m from the edge of the roadway.
- Isolux contours indicated on the drawing do not factor in the mitigation associated with the fitting of lighting shields to all perimeter light fittings.
- Where lighting columns are positioned at the intersection of parking bays, physical barrier protection shall be provided.
- Isolux contours indicated on the drawing do not factor in the mitigation associated with either ecological fencing, landscaping, topography or plants.
- This drawing has been compiled based upon the following design standards and guidance:
 - A. BS 5489-1: 2013
 - B. BS EN 12464-2: 2014
 - C. BS EN 13201: 2015
 - D. CIBSE Lighting guide 6
 - E. ILE Guidance for the reduction in obtrusive light.
- For illuminance (lux) results for grid and parking areas, please refer to lighting technical note SZC-SZ0204-FP-000-REP-100004

ISOLUX COLOUR KEY

0.1 LUX 1.0 LUX 5.0 LUX 7.5 LUX 10.0 LUX

KEY

- SOUTHERN PARK AND RIDE DEVELOPMENT SITE BOUNDARY
- BUFFER ZONE
- ┌ LIGHTING LANTERN DEMOUNTABLE SHIELD TO REDUCE BACKWARD LIGHT SPILL (NOT TO SCALE)
- FIXED CCTV AND VISION SPY
- SECURITY FENCE (1.8M HIGH)
- GATE
- SWALE / INFILTRATION BASIN (INDICATIVE)
- LANDSCAPE BUND

NOT PROTECTIVELY MARKED

COPYRIGHT:
 Reproduced from Ordnance Survey map with the permission of Ordnance Survey on behalf of the controller of Her Majesty's Stationery Office © Crown copyright (2019). All Rights reserved. NNB GenCo Licence: 0100060408

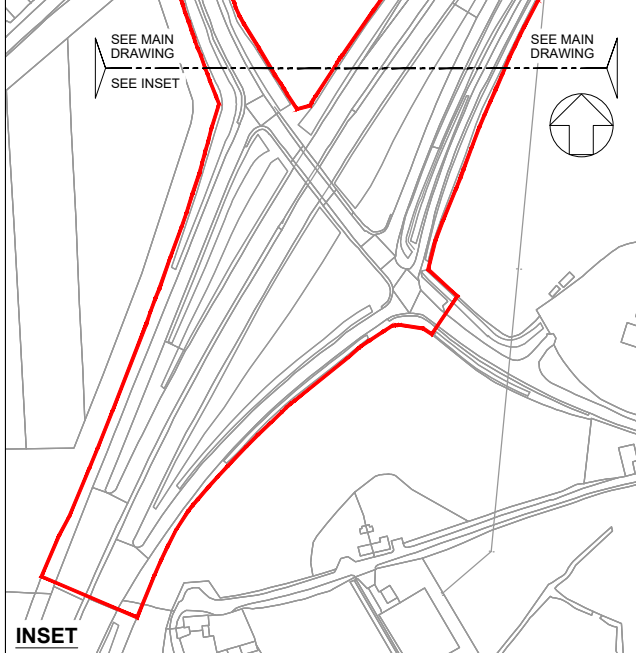
DOCUMENT:
 SIZEWELL C
 ENVIRONMENTAL STATEMENT
 VOLUME 4
 CHAPTER 2
 DESCRIPTION OF THE SOUTHERN PARK AND RIDE

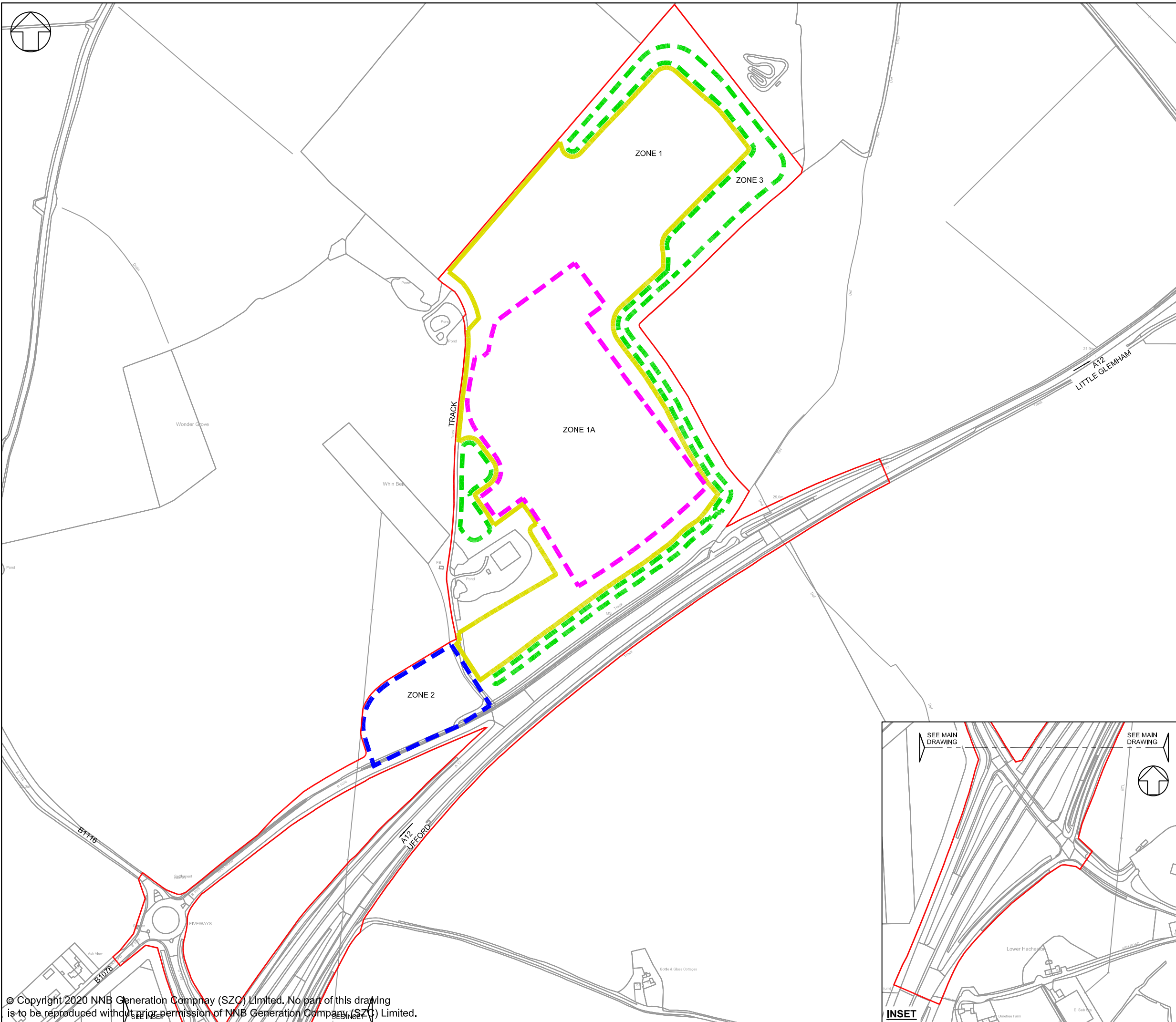
DRAWING TITLE:
 ILLUSTRATIVE LIGHTING PLAN FOR THE SOUTHERN PARK AND RIDE AT WICKHAM MARKET

DRAWING NO:
 FIGURE 2.5

DATE: JAN 2020 **DRAWN:** N.K.S. **SCALE:** 1:4,000 @A3

SCALE BAR:
 0 100 200 M





NOTES:

1. Do not scale from this drawing. All dimensions are in metres unless noted otherwise.

KEY:

- SOUTHERN PARK AND RIDE DEVELOPMENTS SITE BOUNDARY
- ZONE 1**
- TO INCLUDE:
 - OPERATIONAL PARK & RIDE FACILITY INCLUDING TIMA
- ZONE 1A**
- TO INCLUDE:
 - AMENITY WELFARE BUILDING UP TO 4M
 - SECURITY BUILDING UP TO 4M
 - BUS SHELTERS UP TO 3M
 - POSTAL CONSOLIDATION BUILDING UP TO 4M
 - SMOKING SHELTERS (SMOKING/CYCLE)
- ZONE 2**
- TO INCLUDE:
 - ACCESS ROAD
 - SECURITY BOOTH UP TO 4M
 - EXIT LOOP
- ZONE 3**
- TO INCLUDE:
 - INDICATIVE POSITION OF LANDSCAPE BUND UP TO 3M

NOT PROTECTIVELY MARKED

COPYRIGHT:

Reproduced from Ordnance Survey map with the permission of Ordnance Survey on behalf of the controller of Her Majesty's Stationery Office © Crown copyright (2019). All Rights reserved. NNB GenCo Licence: 0100060408



DOCUMENT:
 SIZEWELL C
 ENVIRONMENTAL STATEMENT
 VOLUME 4
 CHAPTER 2
 DESCRIPTION OF THE SOUTHERN PARK AND RIDE

DRAWING TITLE:
 PARAMETER PLAN FOR THE
 SOUTHERN PARK AND RIDE AT WICKHAM MARKET

DRAWING NO:
FIGURE 2.6

DATE: **JAN 2020** DRAWN: **N.K.S.** SCALE: **1:4,000 @A3**

