



# The Sizewell C Project

## 6.4 Volume 3 Northern Park and Ride Chapter 9 Terrestrial Historic Environment Figures 9.1 - 9.3

---

Revision: 1.0  
Applicable Regulation: Regulation 5(2)(a)  
PINS Reference Number: EN010012

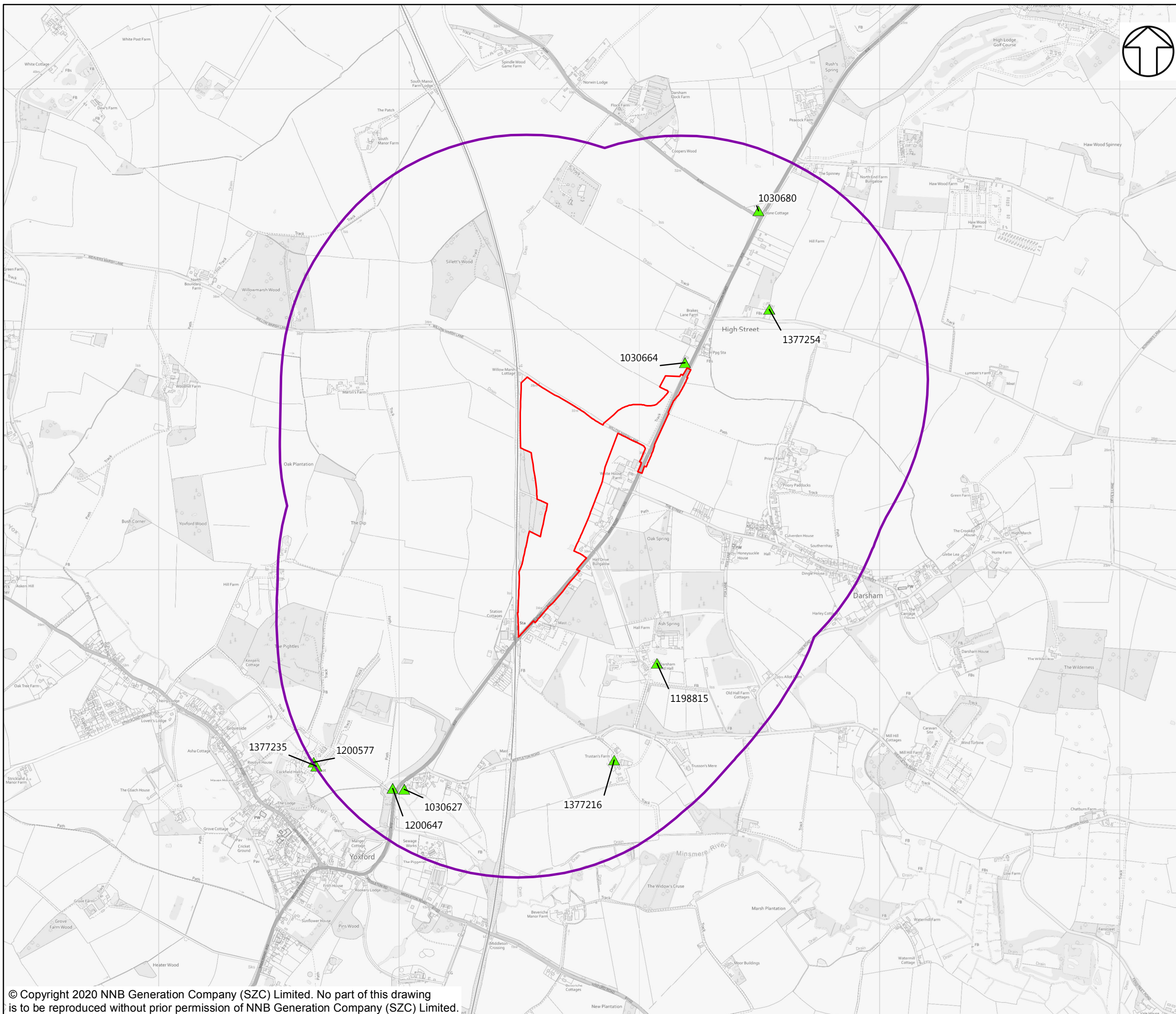
---

May 2020

Planning Act 2008  
Infrastructure Planning (Applications: Prescribed  
Forms and Procedure) Regulations 2009







**NOTES**  
SEE GAZETTEER (APPENDIX 9A) FOR DESIGNATED ASSET NUMBERS AND DESCRIPTIONS

- KEY**
- NORTHERN PARK AND RIDE DEVELOPMENT SITE BOUNDARY
  - 1KM STUDY AREA
  - ▲ GRADE II LISTED BUILDING

NOT PROTECTIVELY MARKED

**COPYRIGHT**  
Reproduced from Ordnance Survey map with the permission of Ordnance Survey on behalf of the controller of Her Majesty's Stationery Office © Crown Copyright (2019). All Rights reserved. NNB GenCo 0100060408.  
The Historic England GIS Data contained in this material was obtained in January 2019. The most publicly available up to date Historic England GIS Data can be obtained from <http://www.historicengland.org.uk> © Historic England 2019.

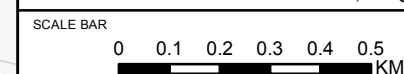


**DOCUMENT:**  
SIZEWELL C  
ENVIRONMENTAL STATEMENT  
VOLUME 3  
CHAPTER 9  
TERRESTRIAL HISTORIC ENVIRONMENT

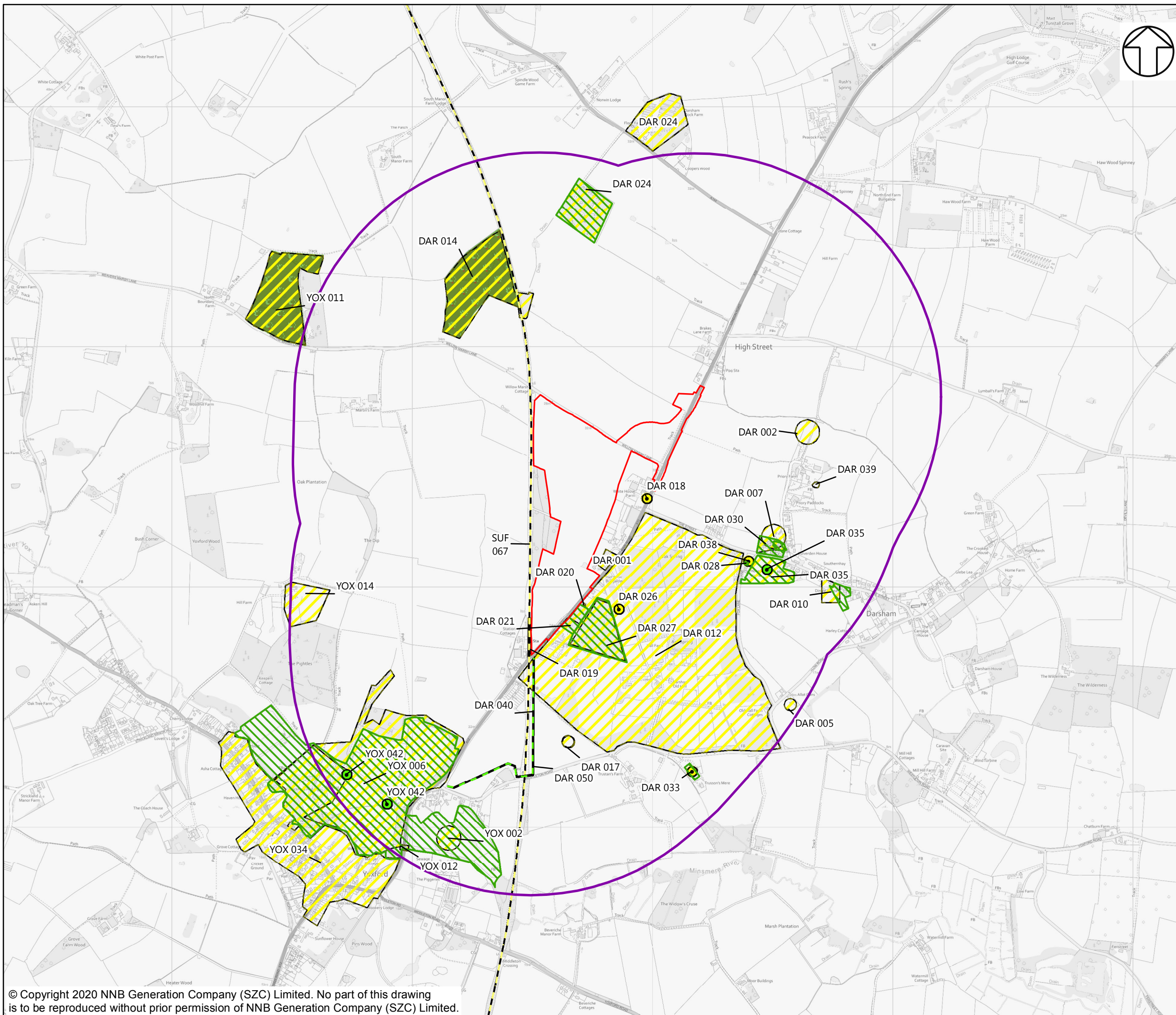
**DRAWING TITLE:**  
DESIGNATED HERITAGE ASSETS

**DRAWING NO:**  
FIGURE 9.1

**DATE:** JAN 2020      **DRAWN:** V.P.      **SCALE:** 1:15,000 @A3







**NOTES**  
SEE GAZETTEER (APPENDIX 9A) FOR HERITAGE ASSET NUMBERS AND DESCRIPTIONS

- KEY**
- NORTHERN PARK AND RIDE DEVELOPMENT SITE BOUNDARY
  - 1KM STUDY AREA
  - HER MONUMENT RECORD
  - HER MONUMENT RECORD
  - HER MONUMENT RECORD
  - HER EVENTS RECORD
  - HER EVENTS RECORD
  - HER EVENTS RECORD
  - ANCIENT WOODLAND

NOT PROTECTIVELY MARKED

**COPYRIGHT**  
Reproduced from Ordnance Survey map with the permission of Ordnance Survey on behalf of the controller of Her Majesty's Stationery Office © Crown Copyright (2019). All Rights reserved. NNB GenCo 0100060408.  
The Suffolk County Council Historic Environment Record Data contained in this material was obtained on 10/08/2018. ©Suffolk County Council 2018.

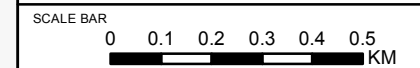


**DOCUMENT:**  
SIZEWELL C  
ENVIRONMENTAL STATEMENT  
VOLUME 3  
CHAPTER 9  
TERRESTRIAL HISTORIC ENVIRONMENT

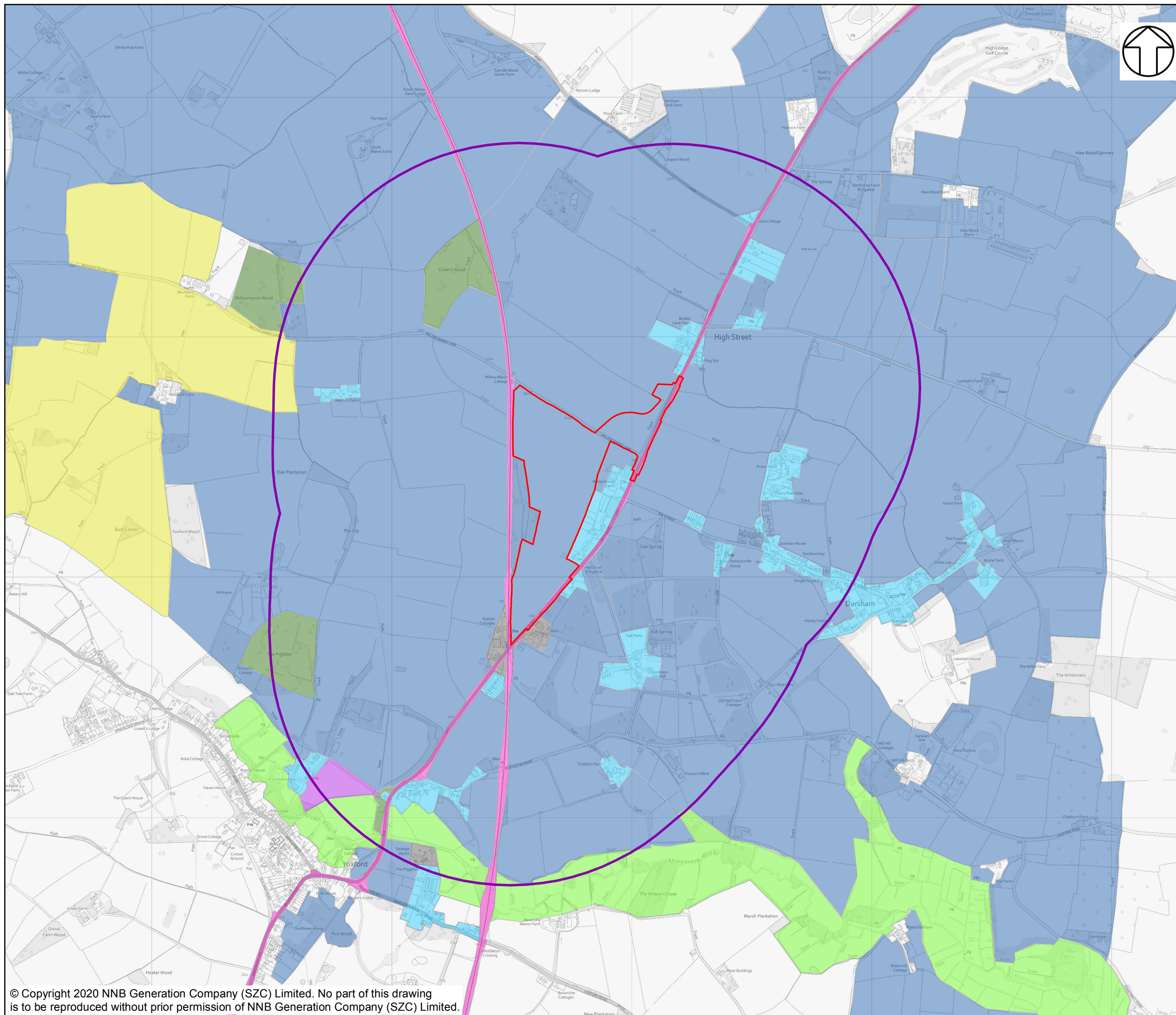
**DRAWING TITLE:**  
NON-DESIGNATED HERITAGE RECORDS

**DRAWING NO:**  
FIGURE 9.2

**DATE:** JAN 2020      **DRAWN:** V.P.      **SCALE:** 1:15,000 @A3







**NOTES**

**KEY**

- NORTHERN PARK AND RIDE DEVELOPMENT SITE BOUNDARY
- 1KM STUDY AREA
- HISTORIC LANDSCAPE CHARACTER**
- BUILT UP AREA
- COMMUNICATIONS
- INDUSTRIAL
- MEADOW OR MANAGED WETLAND
- POST-1950 AGRICULTURAL LANDSCAPE
- POST-MEDIEVAL PARK AND LEISURE
- PRE-18TH-CENTURY ENCLOSURE
- WOODLAND

NOT PROTECTIVELY MARKED

**COPYRIGHT**

Reproduced from Ordnance Survey map with the permission of Ordnance Survey on behalf of the controller of Her Majesty's Stationery Office © Crown Copyright (2019). All Rights reserved. NNB GenCo 0100060408. The Historic Landscape GIS Data contained within this material was obtained on 10/08/2018. ©Suffolk County Council 2018.



DOCUMENT:  
 SIZEWELL C  
 ENVIRONMENTAL STATEMENT  
 VOLUME 3  
 CHAPTER 9  
 TERRESTRIAL HISTORIC ENVIRONMENT

DRAWING TITLE:  
 HISTORIC LANDSCAPE CHARACTER

DRAWING NO:  
 FIGURE 9.3

DATE: JAN 2020      DRAWN: V.P.      SCALE: 1:15,000 @A3

