



The Sizewell C Project

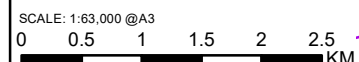
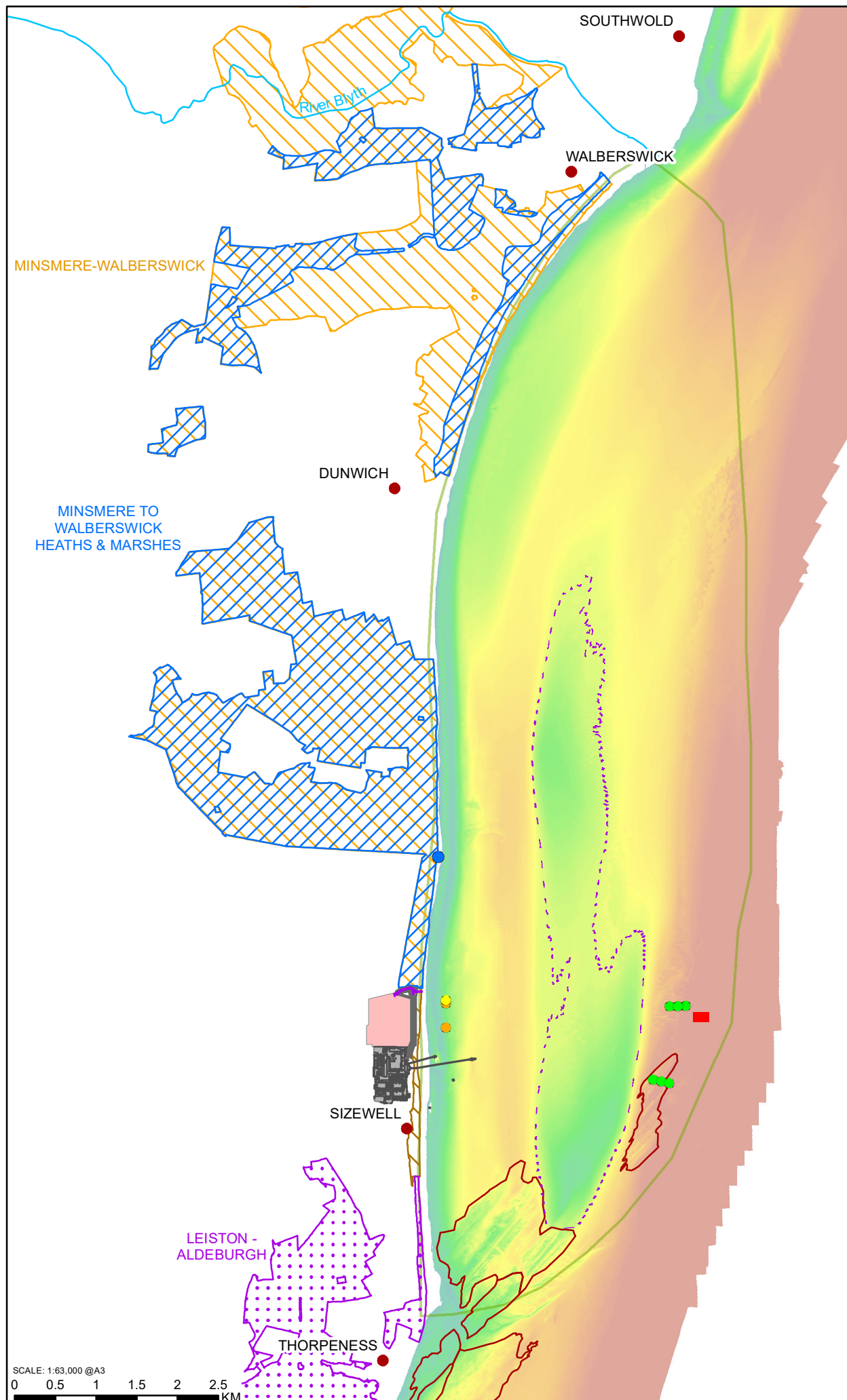
6.3 Volume 2 Main Development Site Chapter 20 Coastal Geomorphology and Hydrodynamics Figure 20.1

Revision: 1.0
Applicable Regulation: Regulation 5(2)(a)
PINS Reference Number: EN010012

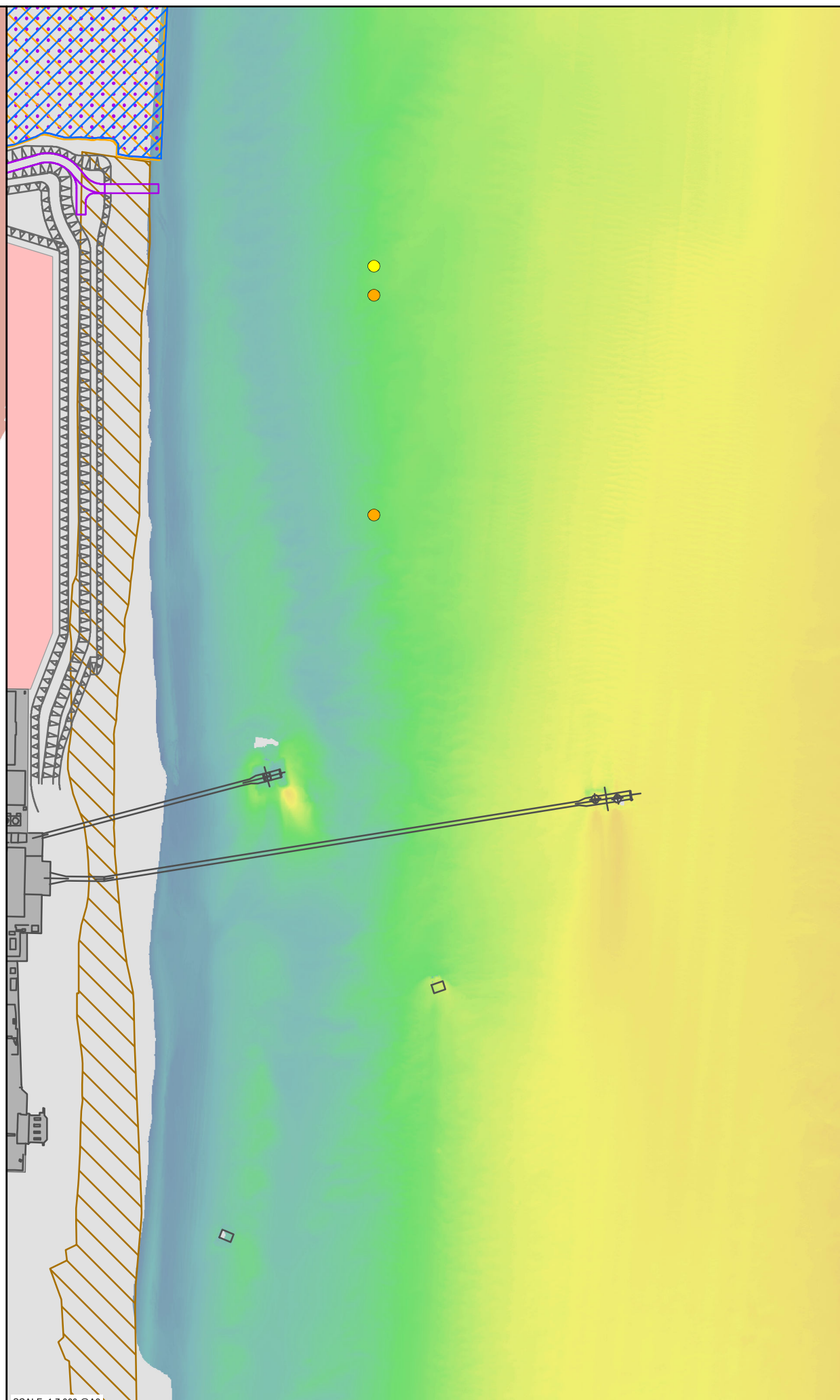
May 2020

Planning Act 2008
Infrastructure Planning (Applications: Prescribed
Forms and Procedure) Regulations 2009





© Copyright 2020 NNB Generation Company (SZC) Limited. No part of this drawing is to be reproduced without prior permission of NNB Generation Company (SZC) Limited.

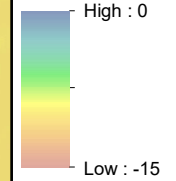


NOTES

KEY

- SIZEWELL C
- SIZEWELL B
- SIZEWELL C INTAKES
- SIZEWELL C OUTFALL
- SIZEWELL A AND SIZEWELL B INFRASTRUCTURE
- COMBINED DRAINAGE OUTFALL (CDO)
- FISH RECOVERY AND RETURN (FRR)
- MINSMERE OUTFALL
- HARD COASTAL DEFENCE FEATURE (HCDF)
- SIZEWELL DUNWICH BANK
- BEACH LANDING FACILITY (BLF)
- GREATER SIZEWELL BAY
- CORALLINE CRAG
- SPECIAL AREA OF CONSERVATION
- COUNTY WILDLIFE SITE
- SPECIAL PROTECTION AREA
- SITE OF SPECIAL SCIENTIFIC INTEREST

DEPTH ODN (M)



NOT PROTECTIVELY MARKED

COPYRIGHT
 Reproduced from Ordnance Survey map with the permission of Ordnance Survey on behalf of the controller of Her Majesty's Stationery Office © Crown Copyright (2019). All Rights reserved. NNB GenCo 0100060408. © British Crown and OceanWise, 2019. All rights reserved. License No. EK001-20170811. Not to be used for Navigation.
 © Natural England material is reproduced with the permission of Natural England 2019.
 Suffolk Biodiversity Information Service 2019. All rights reserved.



DOCUMENT:
 SIZEWELL C
 ENVIRONMENTAL STATEMENT
 VOLUME 2
 CHAPTER 20
 COASTAL GEOMORPHOLOGY
 AND HYDRODYNAMICS

DRAWING TITLE:
 GREATER SIZEWELL BAY, GEOMORPHIC ELEMENTS, SZC MARINE INFRASTRUCTURE AND STATUTORY DESIGNATED SITES (MINSMERE TO WALBERSWICK HEATHS AND MARSHES SAC, MINSMERE TO WALBERSWICK SPA AND LEISTON - ALDEBURGH SSSI).

DRAWING NO:
 FIGURE 20.1

DATE: JAN 2020 **DRAWN:** R.H.