



The Sizewell C Project

6.3 Volume 2 Main Development Site Chapter 19 Groundwater and Surface Water Appendix 19B: Sizewell C Conceptual Site Model of the Hydrogeological Regime Part 4 of 5

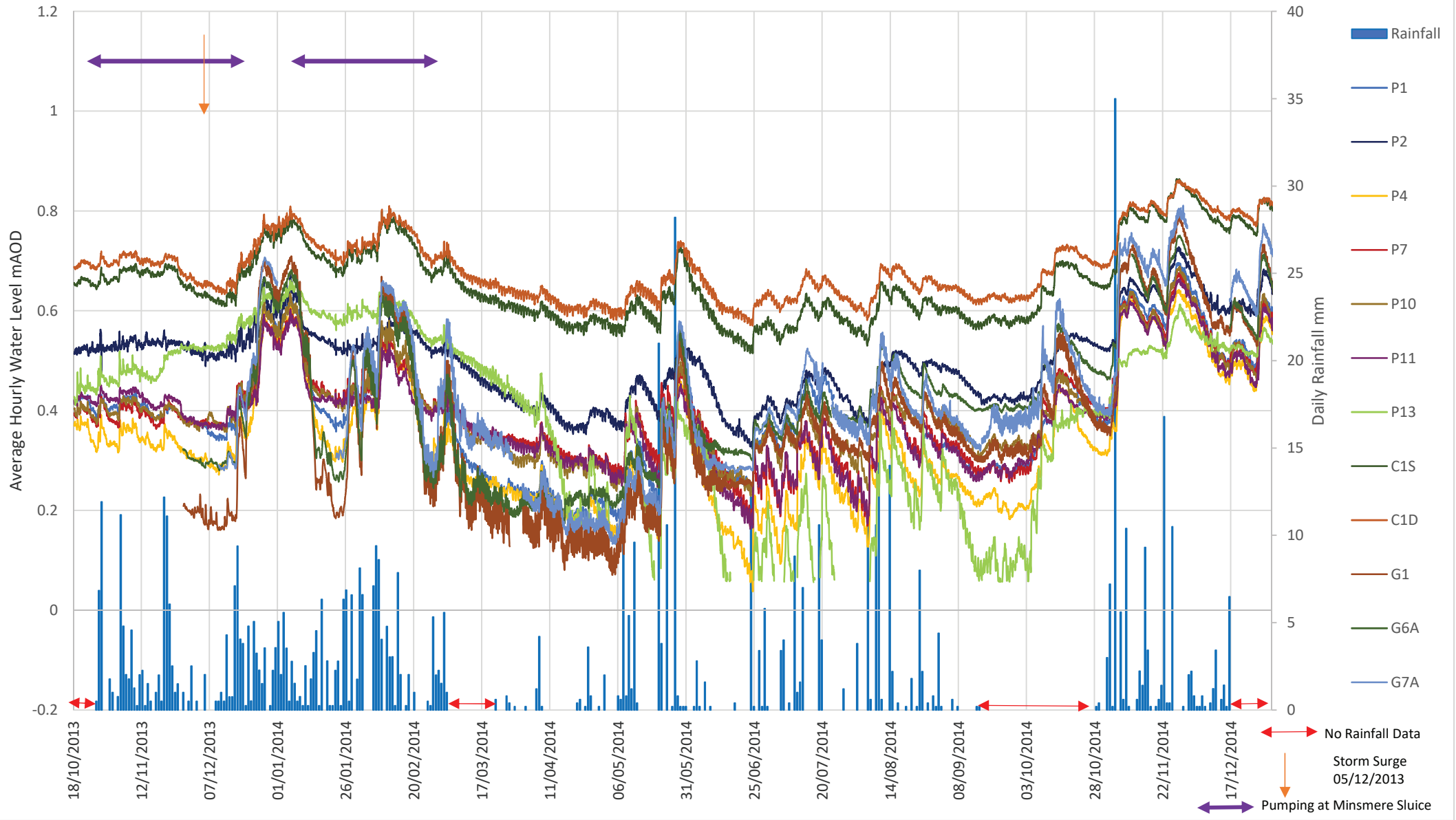
Revision: 1.0
Applicable Regulation: Regulation 5(2)(a)
PINS Reference Number: EN010012

May 2020

Planning Act 2008
Infrastructure Planning (Applications: Prescribed
Forms and Procedure) Regulations 2009



Chart 4: Surface Water and Groundwater Levels in the Vicinity of Sizewell Drain, November 2013 to December 2014



This Chart supersedes Chart 4 in the 2015 CSM Report

Chart 4A: Surface Water and Groundwater Levels in the Vicinity of Sizewell Drain, 2015

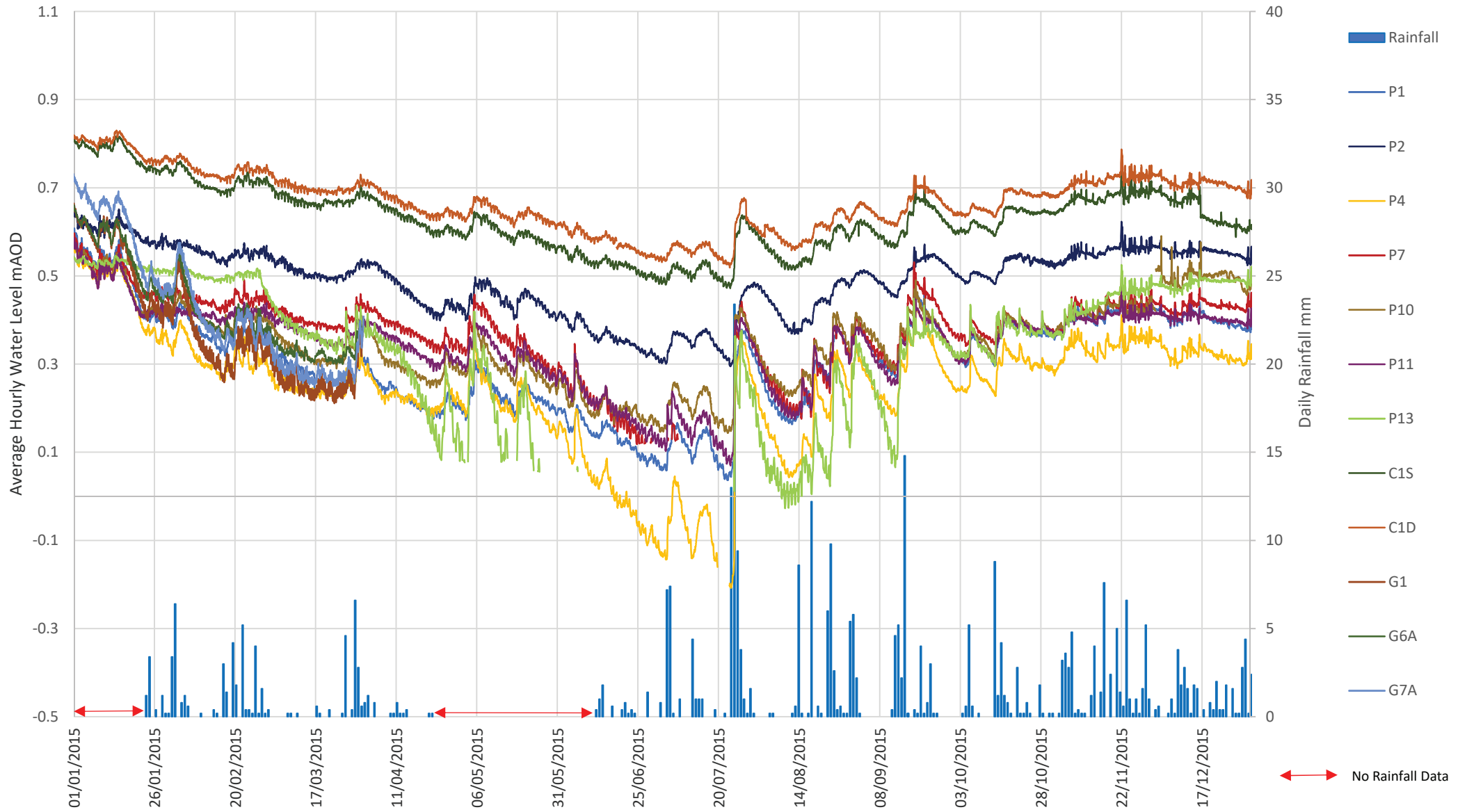


Chart 4B: Surface Water and Groundwater Levels in the Vicinity of Sizewell Drain, 2016

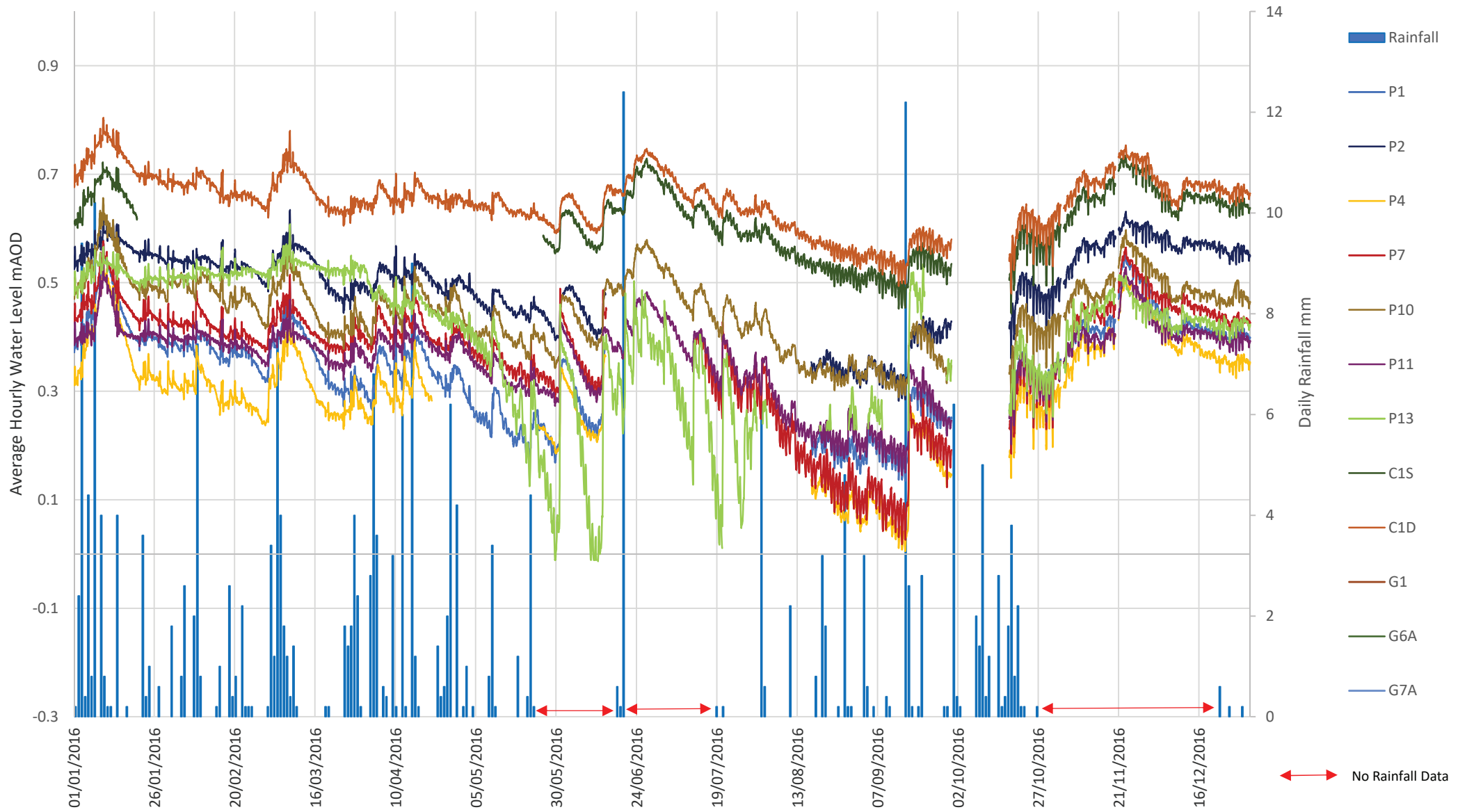


Chart 4C Surface Water and Groundwater Levels in the Vicinity of Sizewell Drain, 2017

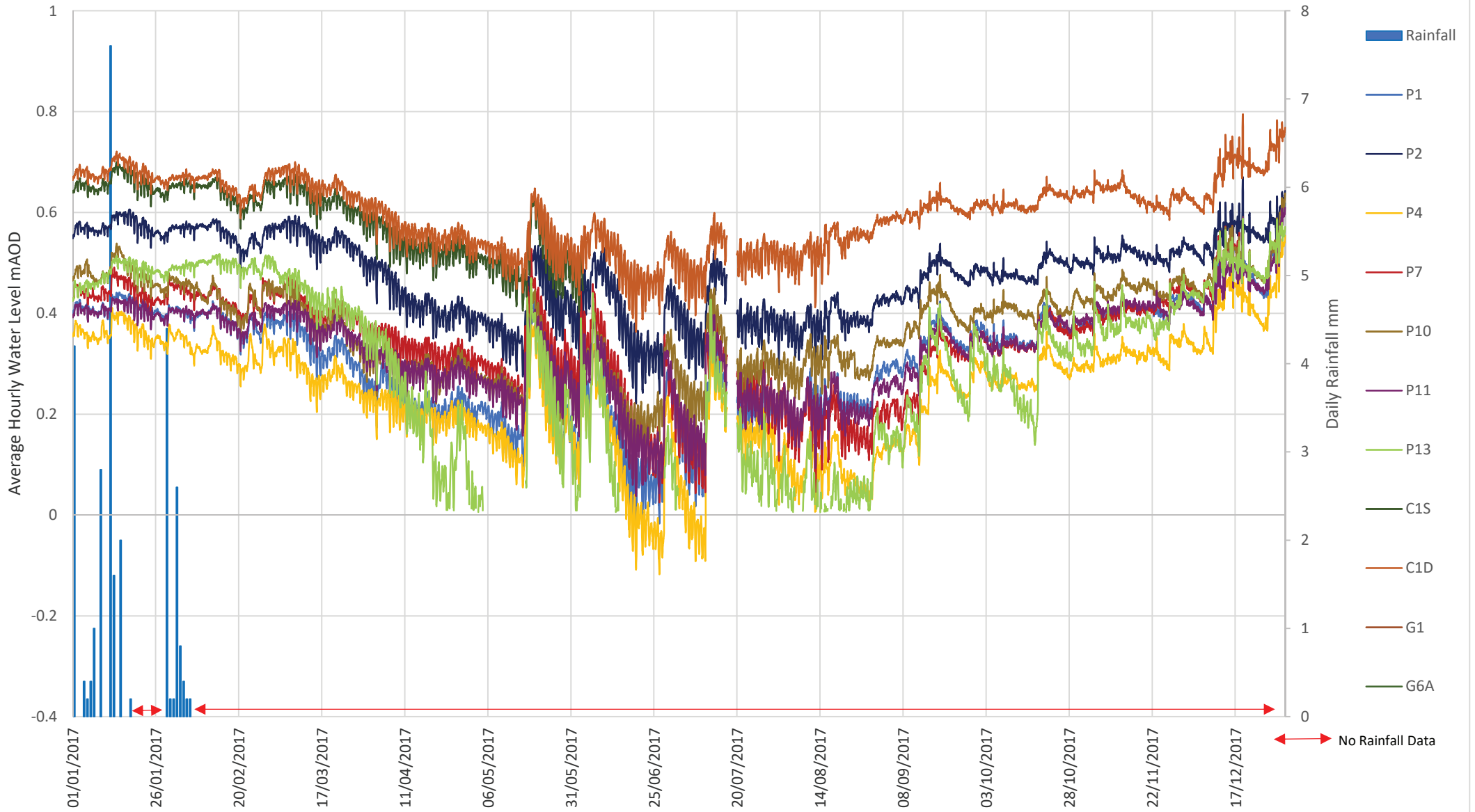


Chart 2D: Surface Water and Groundwater Levels in the Vicinity of Sizewell Drain, 10- 4

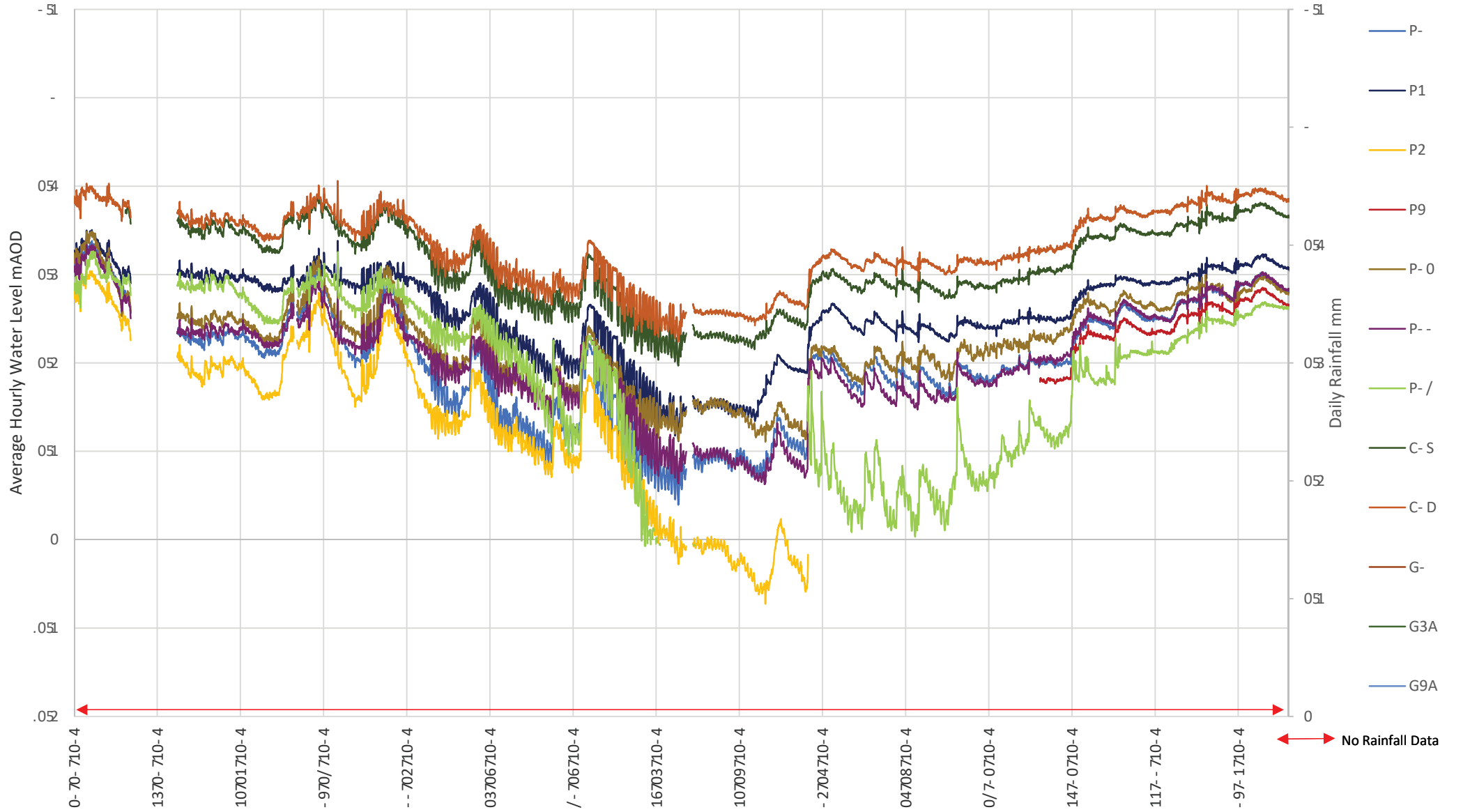


Chart 4E: Surface Water and Groundwater Levels in the Vicinity of Sizewell Drain, 2019

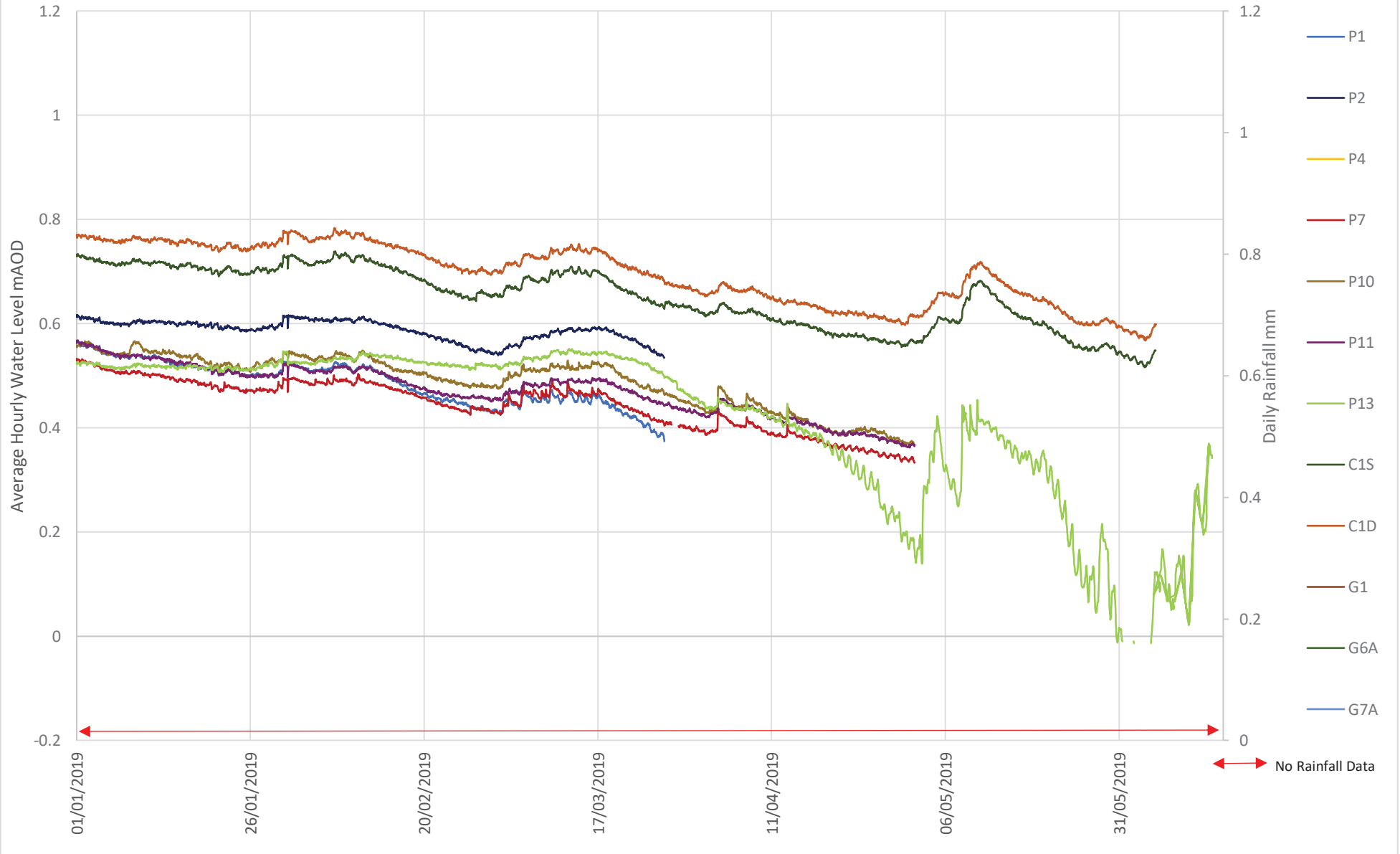
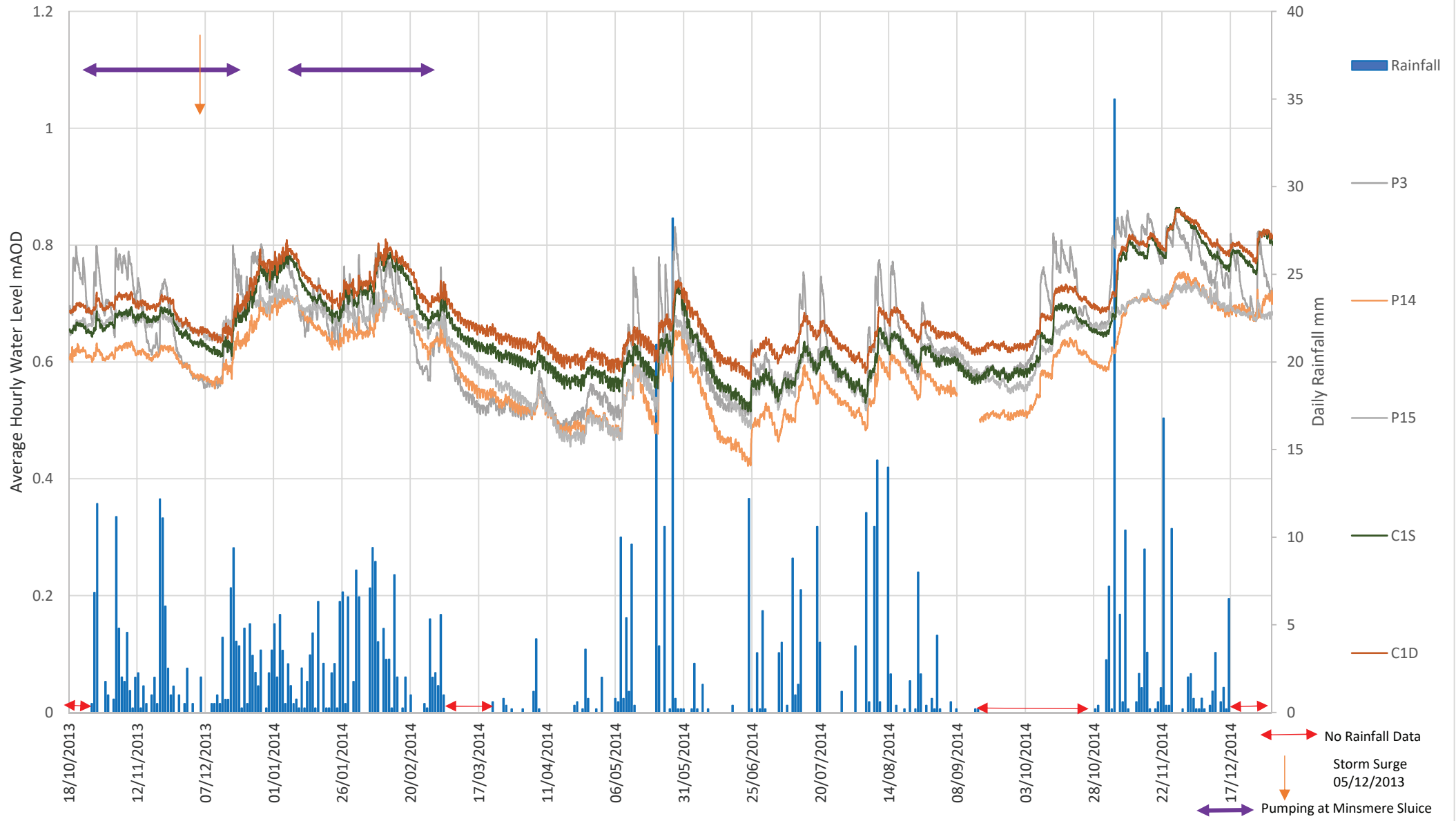


Chart 5: Groundwater Levels Within C1 Boreholes and Neighbouring Peat Piezometers, October 2013 to December 2014



This Chart supersedes Chart 5 in the 2015 CSM Report

Chart 5A: Groundwater Levels Within C1 Boreholes and Neighbouring Peat Piezometers, 2015

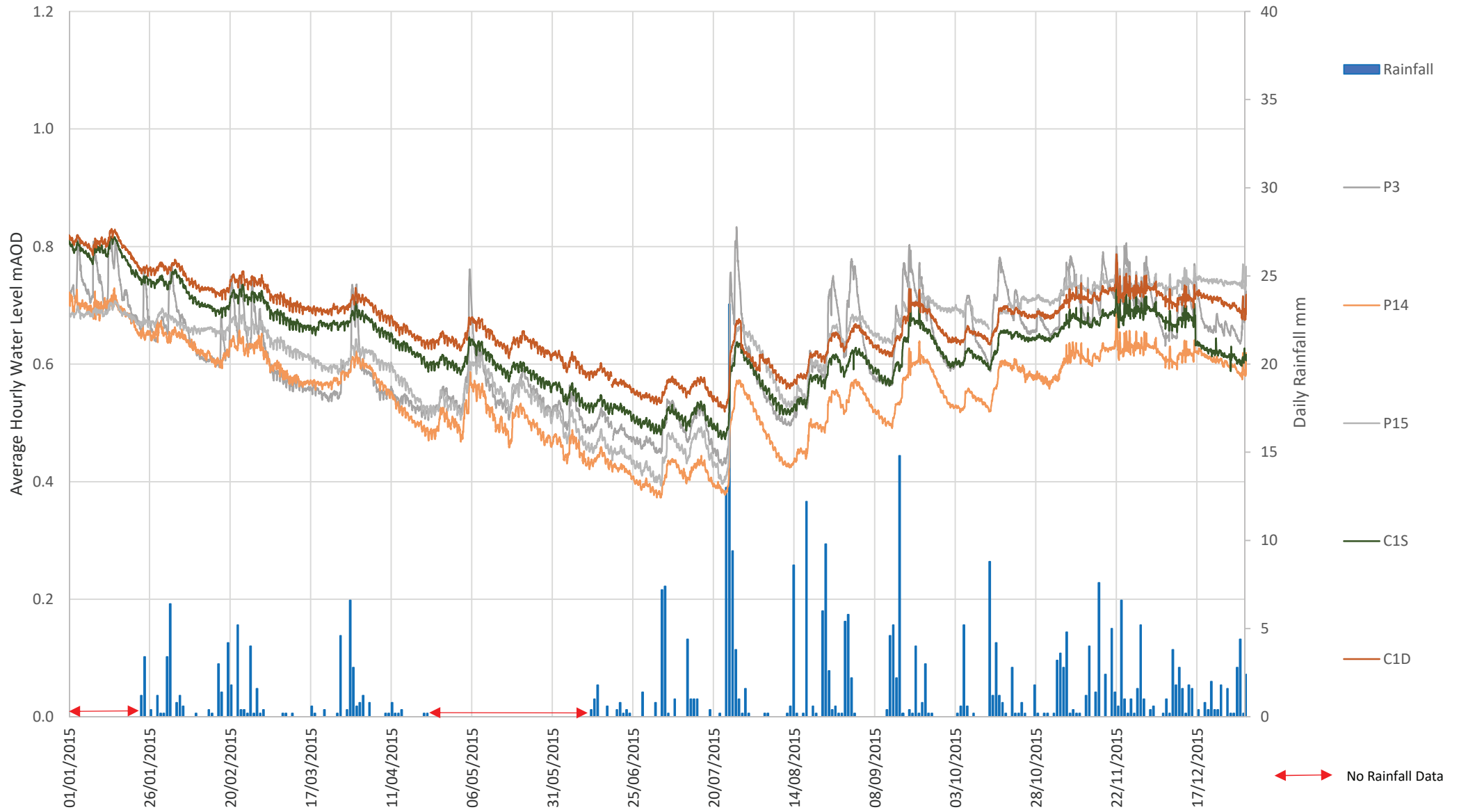


Chart 5B: Groundwater Levels Within C1 Boreholes and Neighbouring Peat Piezometers, 2016

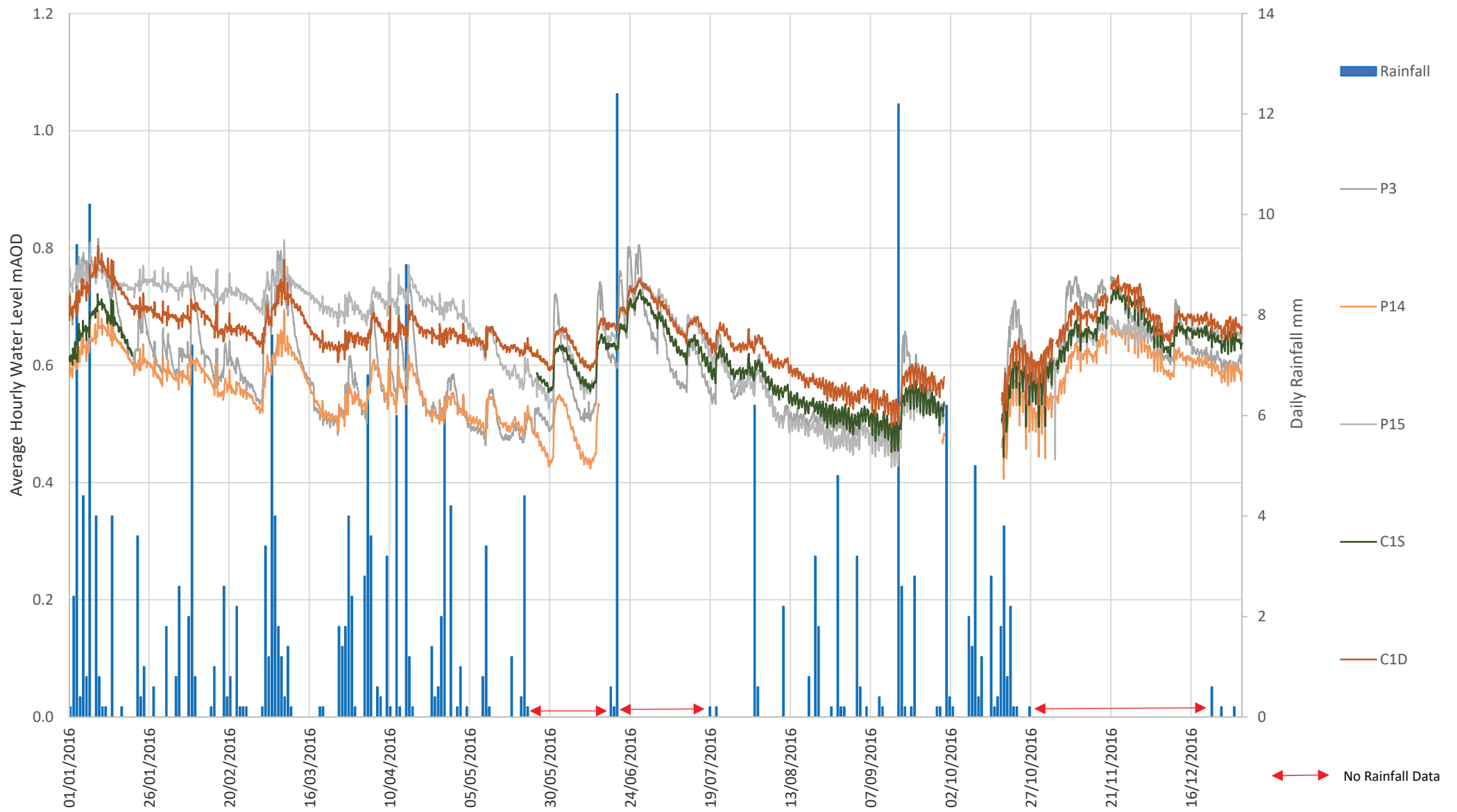


Chart 1CB: roundwater Level Within C2 shoreholewater Neighbouring Peat Piezometer 402/

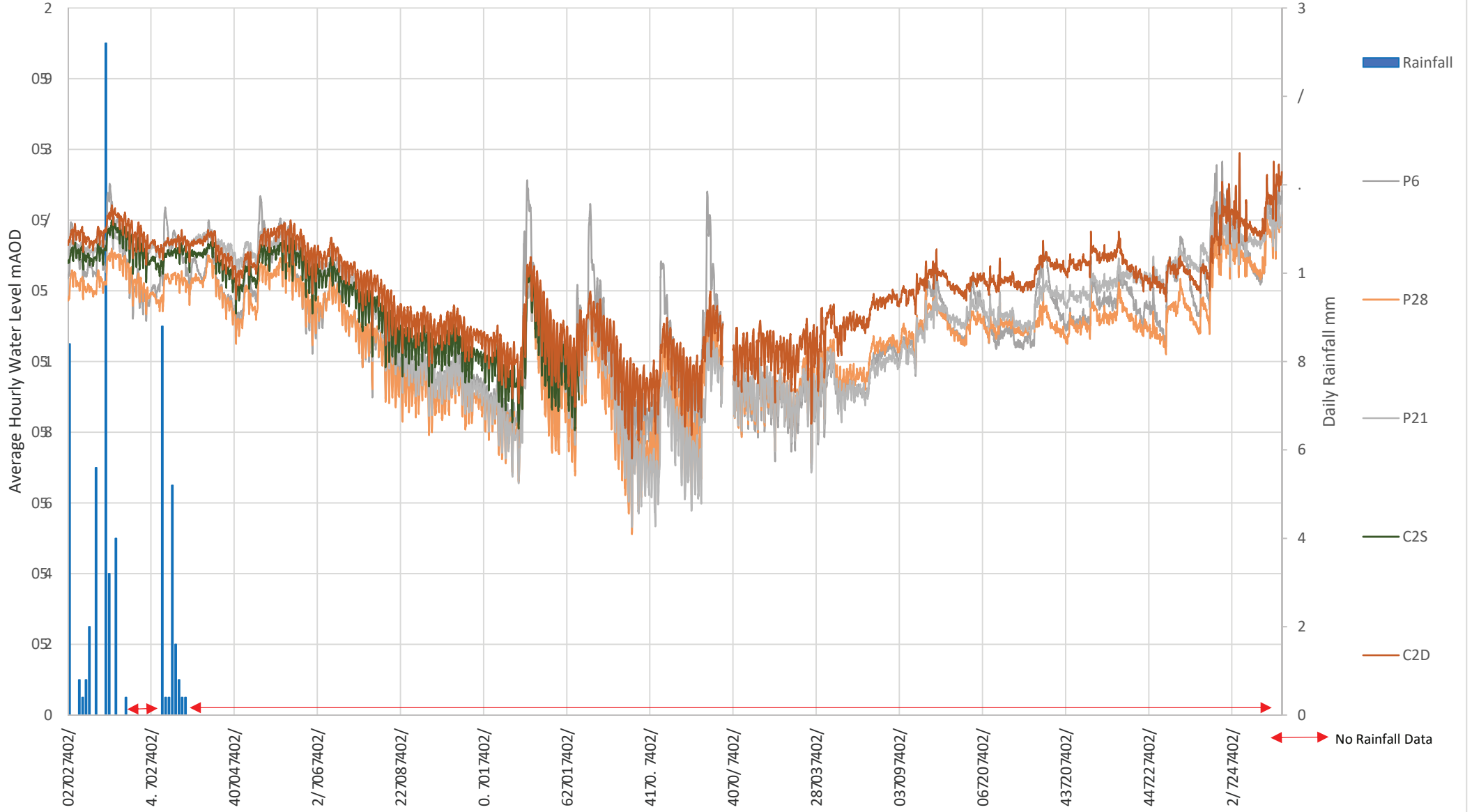


Chart 3DB: rounGd ater LevelWithin C. soreholewanG Neighbouring Peat Piezometerw 40. 1

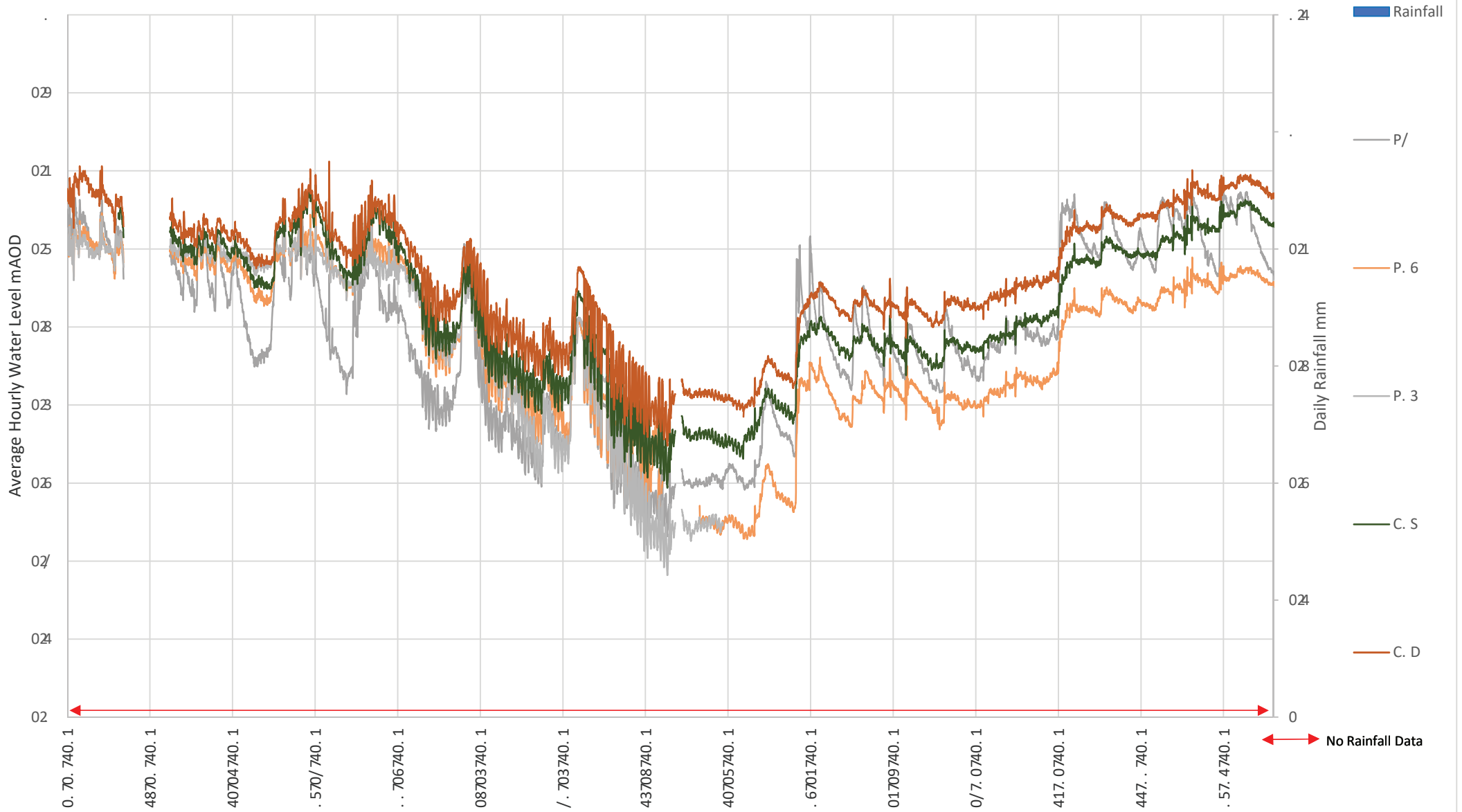


Chart 5E: Groundwater Levels Within C1 Boreholes and Neighbouring Peat Piezometers, 2019

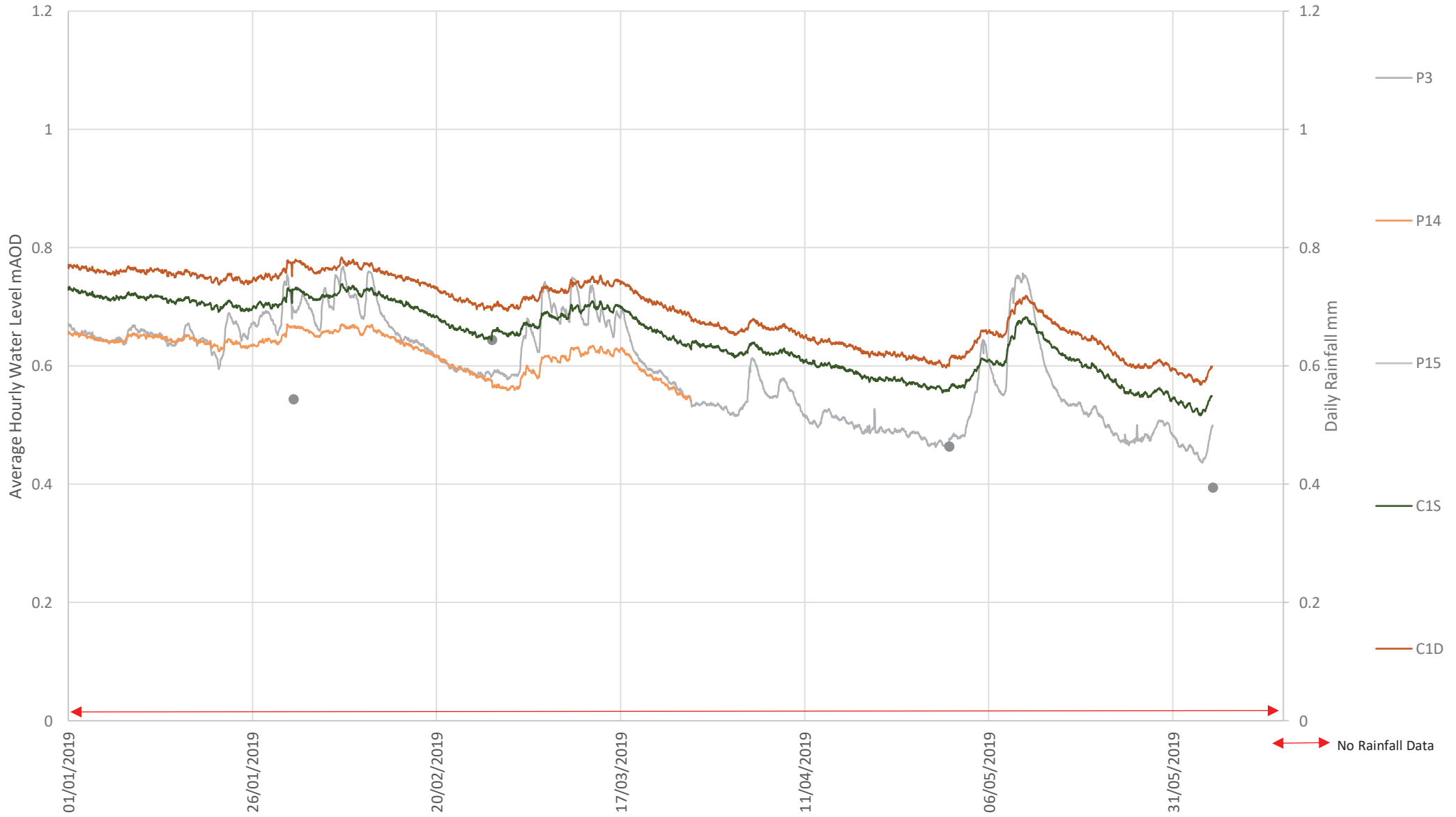
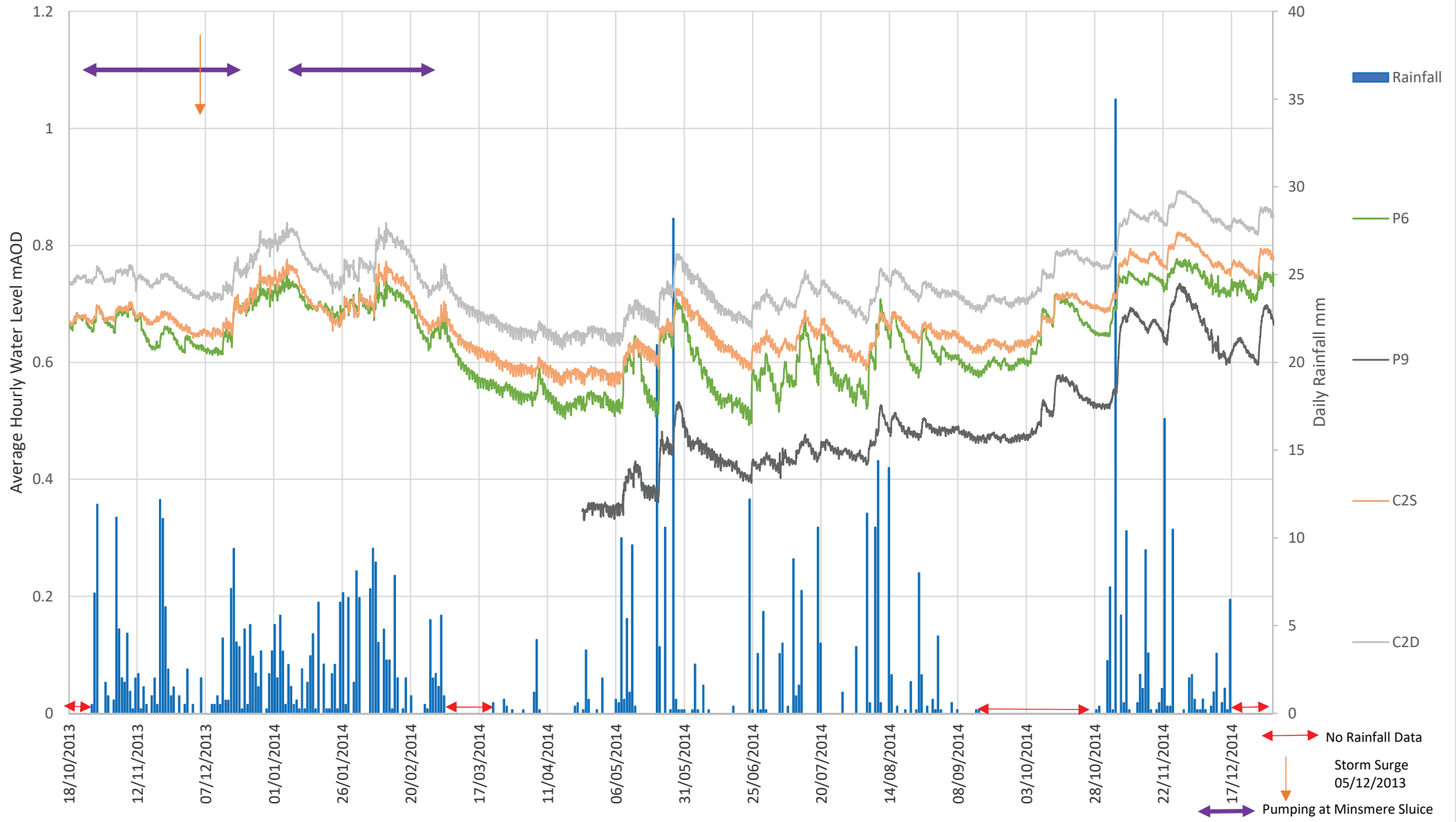


Chart 6: Groundwater Levels Within C2 Boreholes and Neighbouring Peat Piezometers, October 2013 to December 2014



This Chart supersedes Chart 6 in the 2015 CSM Report

Chart 6A: Groundwater Levels Within C2 Boreholes and Neighbouring Peat Piezometers, 2015

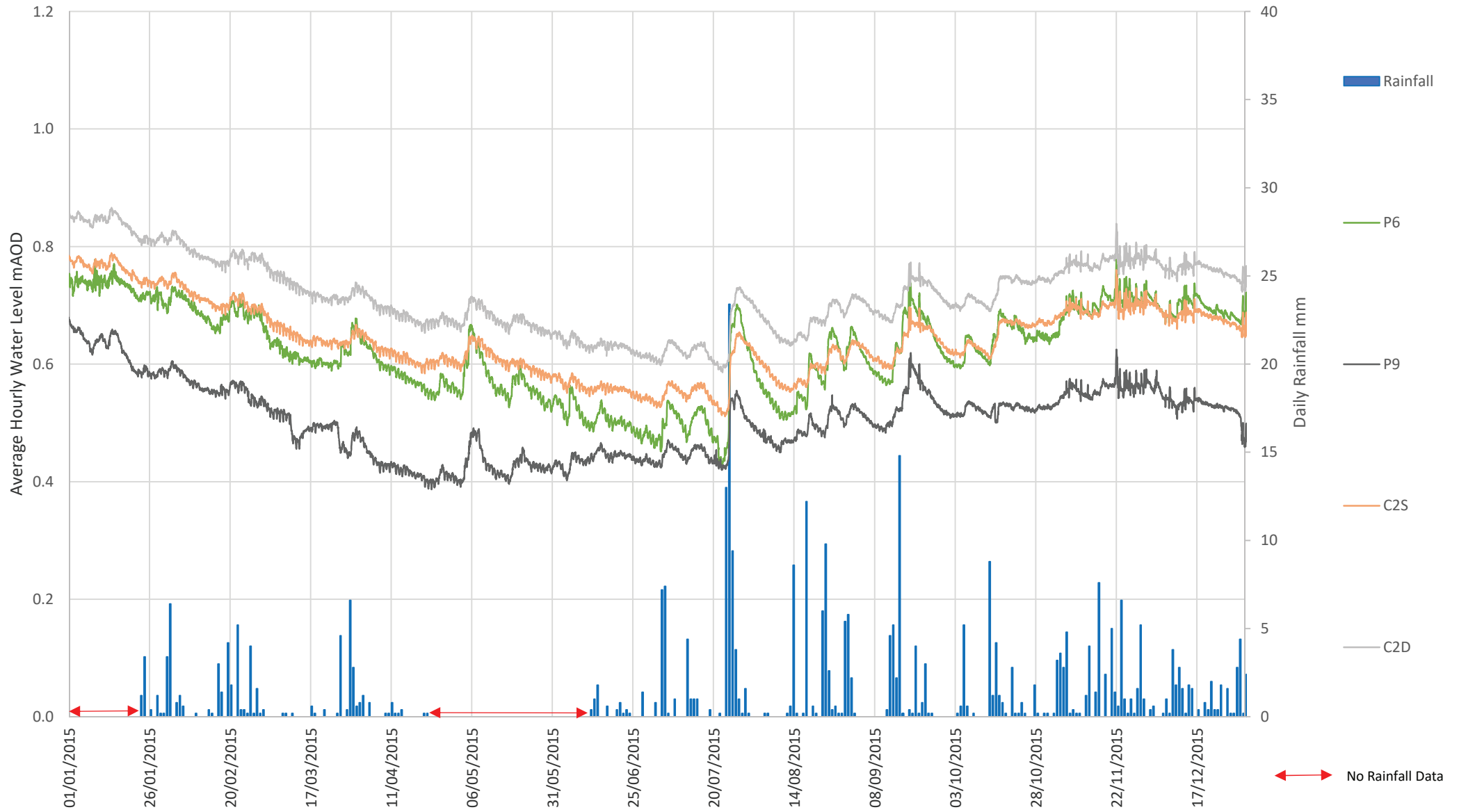


Chart 6B: Groundwater Levels Within C2 Boreholes and Neighbouring Peat Piezometers, 2016

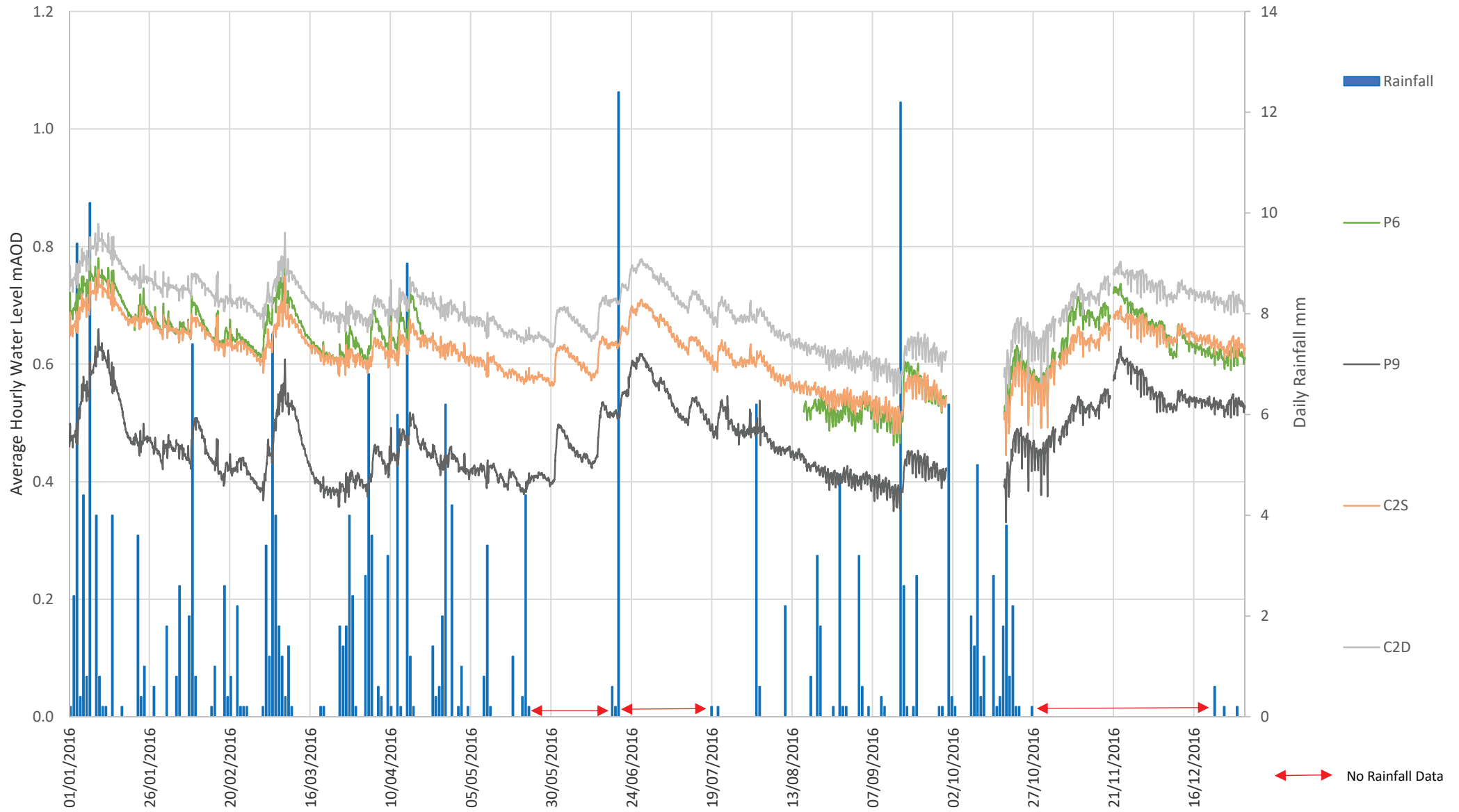


Chart 1CB: roundwater LevelWithin C4 shoreholewanG Neighbouring Peat Piezometerw 402/

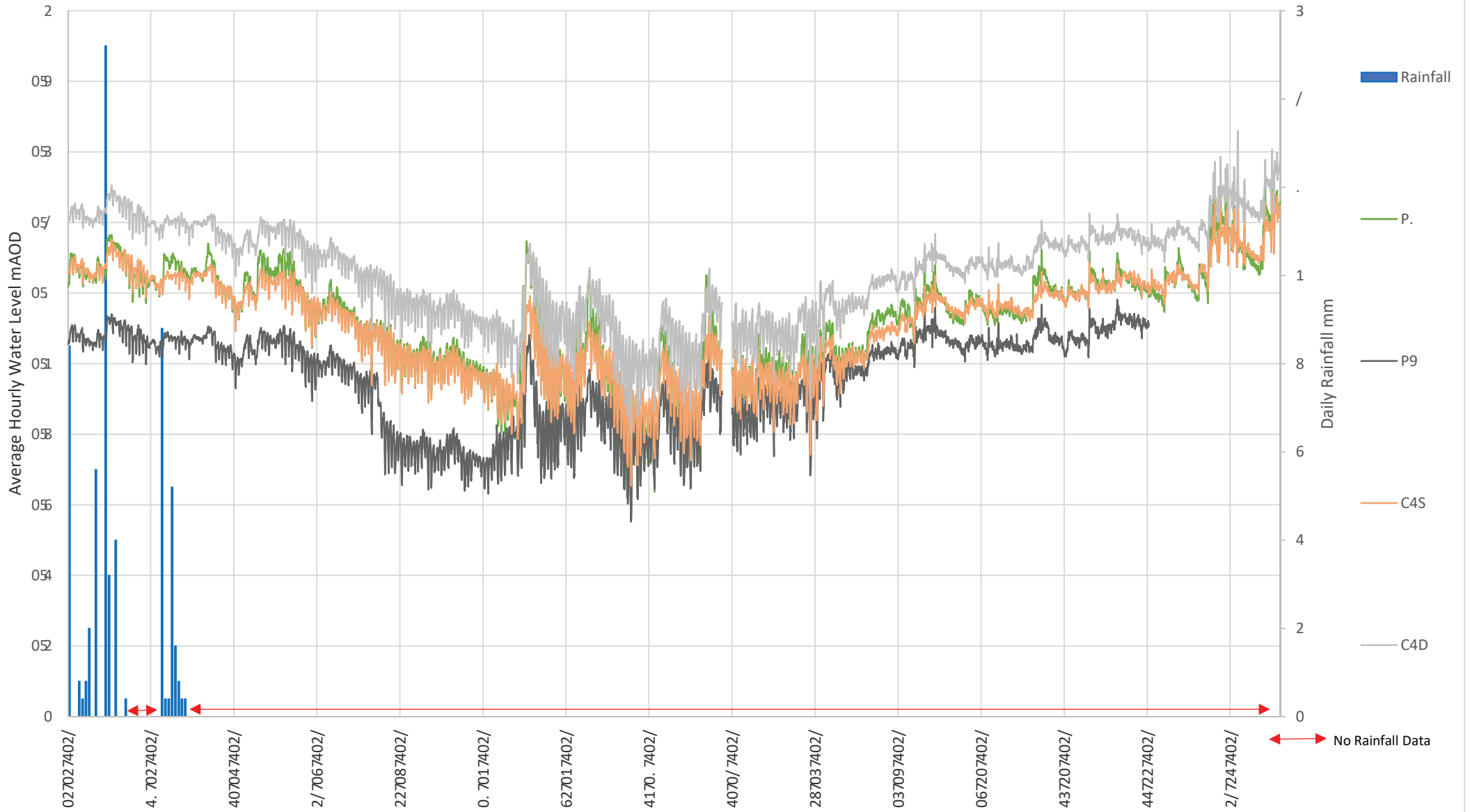


Chart 8DB: rounGd ater LevelWithin C4 s oreholewanG Neighbouring Peat Piezometerw 40. 1

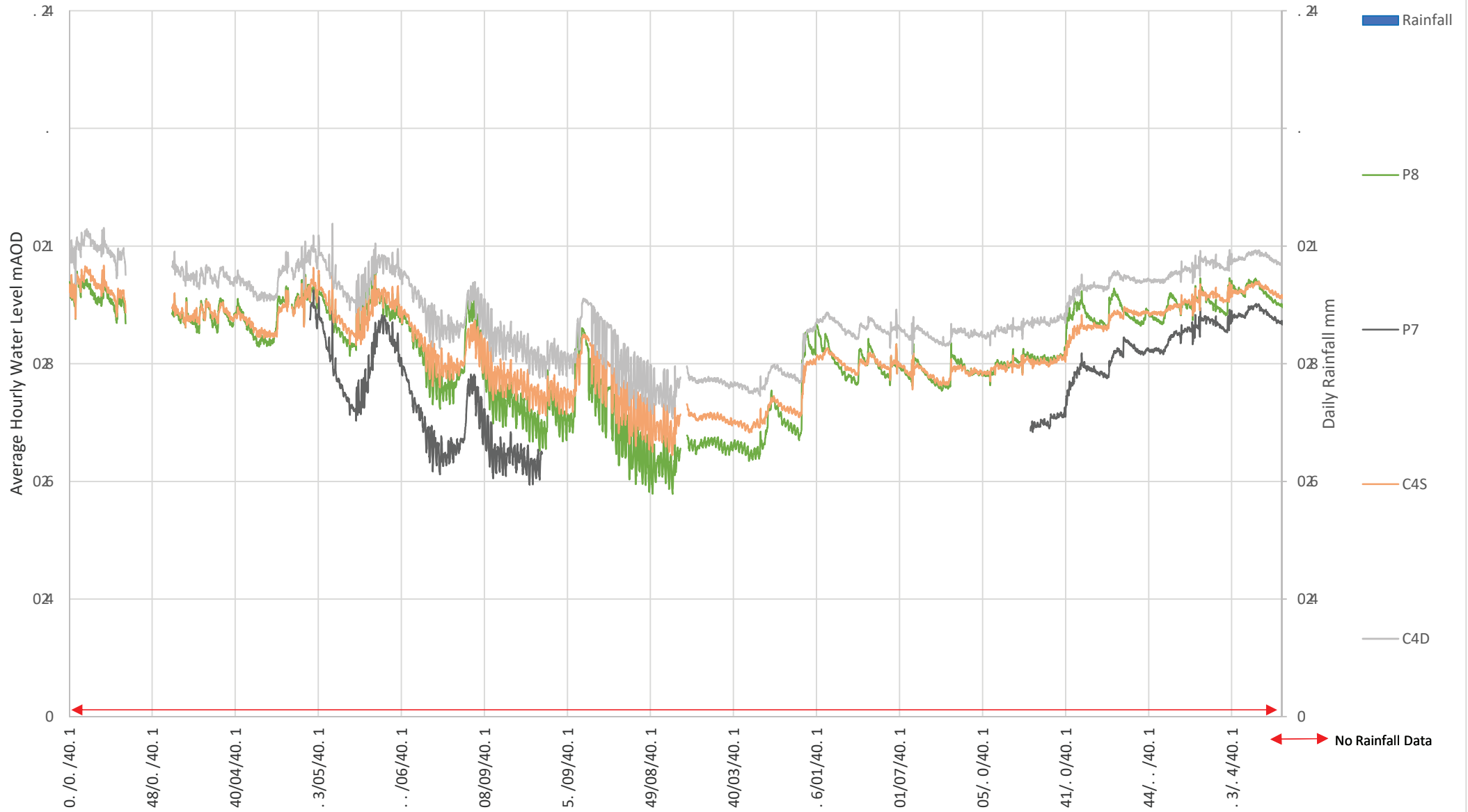


Chart 6E: Groundwater Levels Within C2 Boreholes and Neighbouring Peat Piezometers, 2019

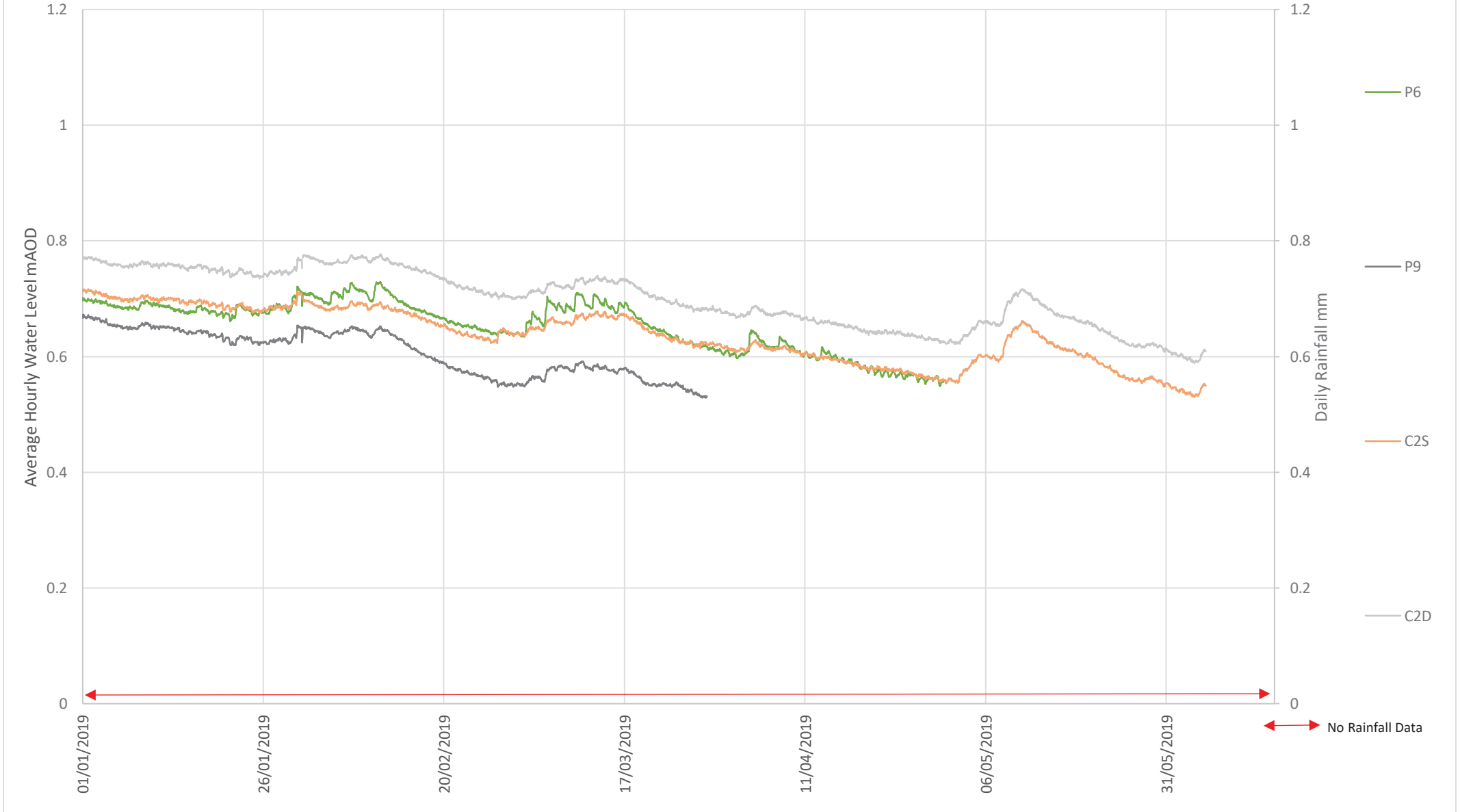
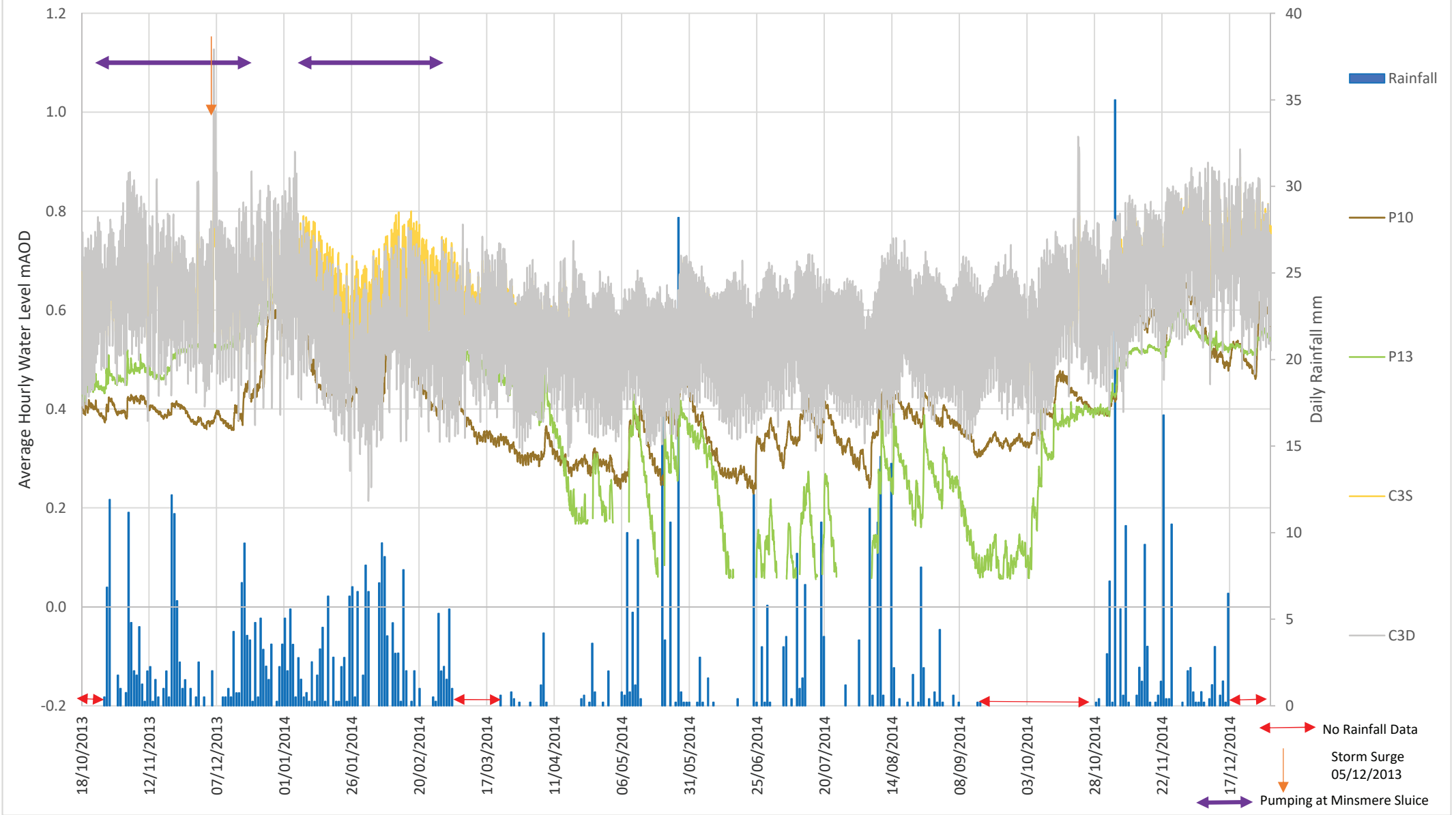


Chart 7: Groundwater Levels Within C3 Boreholes and Neighbouring Peat Piezometers, October 2013 to December 2014



This Chart supersedes Chart 7 in the 2015 CSM Report