



The Sizewell C Project

6.3 Volume 2 Main Development Site Chapter 19 Groundwater and Surface Water Appendix 19B: Sizewell C Conceptual Site Model of the Hydrogeological Regime Part 3 of 5

Revision: 1.0
Applicable Regulation: Regulation 5(2)(a)
PINS Reference Number: EN010012

May 2020

Planning Act 2008
Infrastructure Planning (Applications: Prescribed
Forms and Procedure) Regulations 2009



Chart 1E: Groundwater Levels in Peat Deposits, 2019

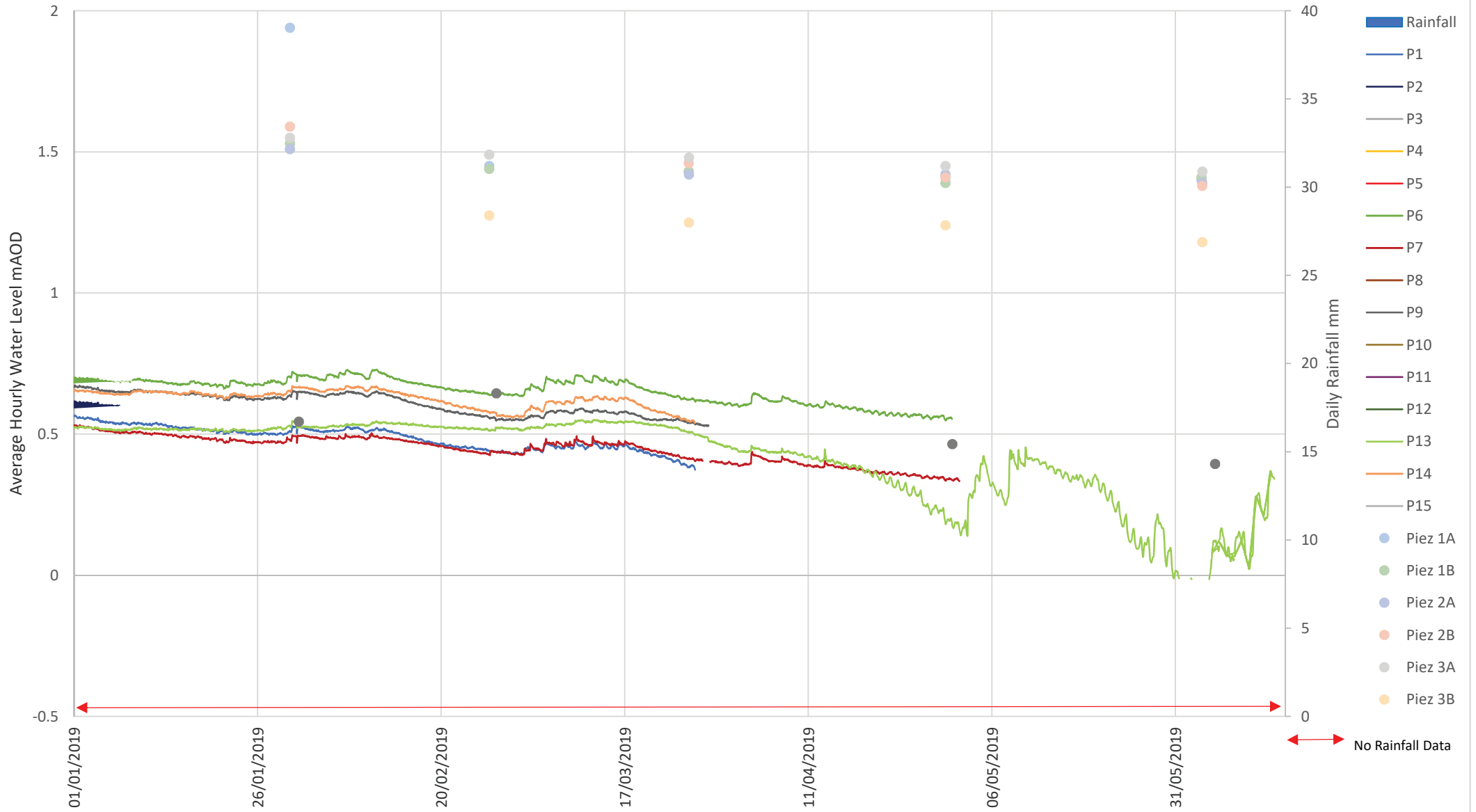
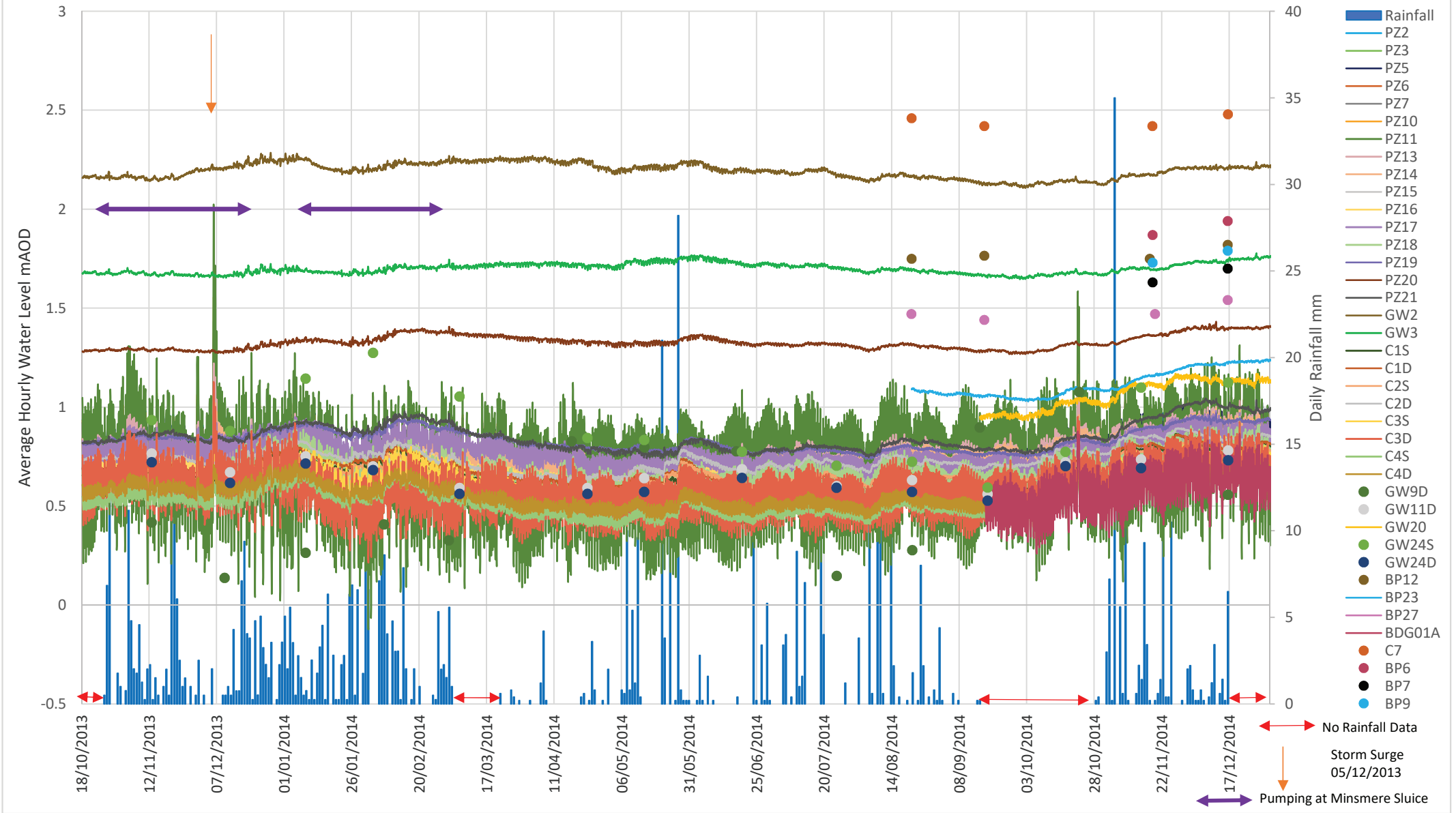


Chart 2: Groundwater Levels in Crag Deposits, October 2013 to December 2014



This Chart supersedes Chart 2 in the 2015 CSM Report

Chart 2A: Groundwater Levels in Crag Deposits, 2015

← No Rainfall Data →

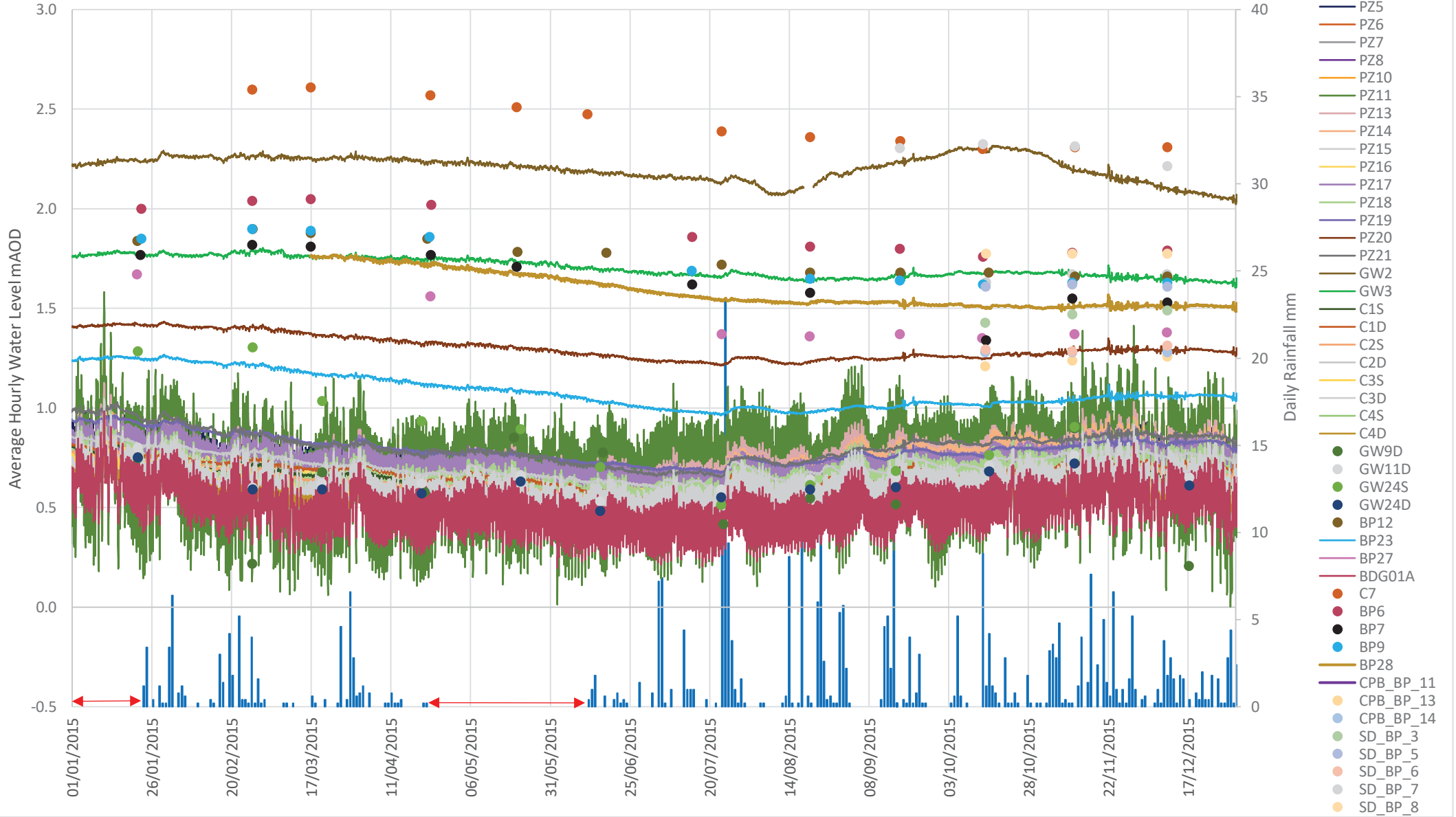


Chart 2B: Groundwater Levels in Crag Deposits, 2016

← No Rainfall Data →

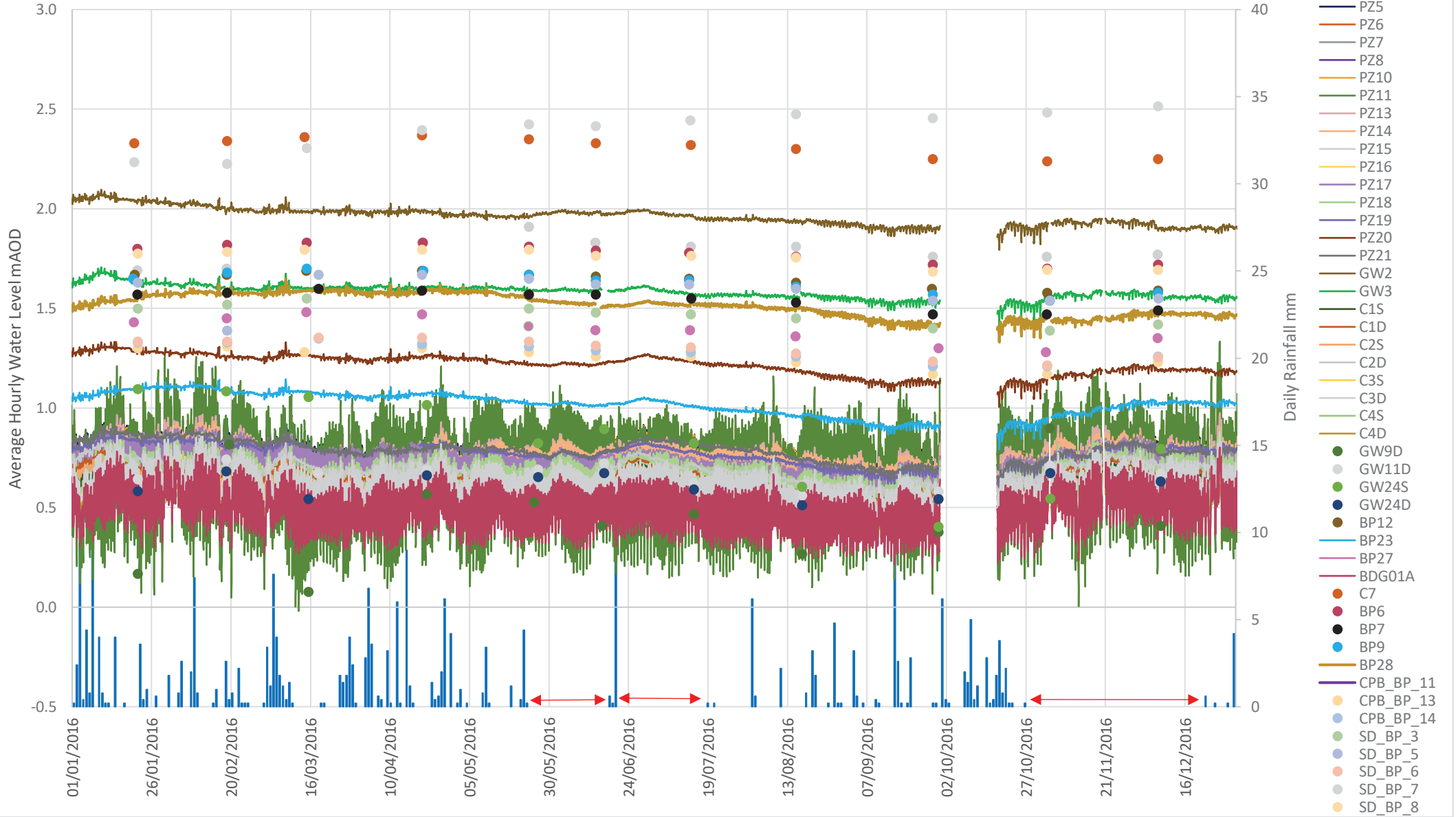


Chart 2C: Groundwater Levels in Crag Deposits, 2017

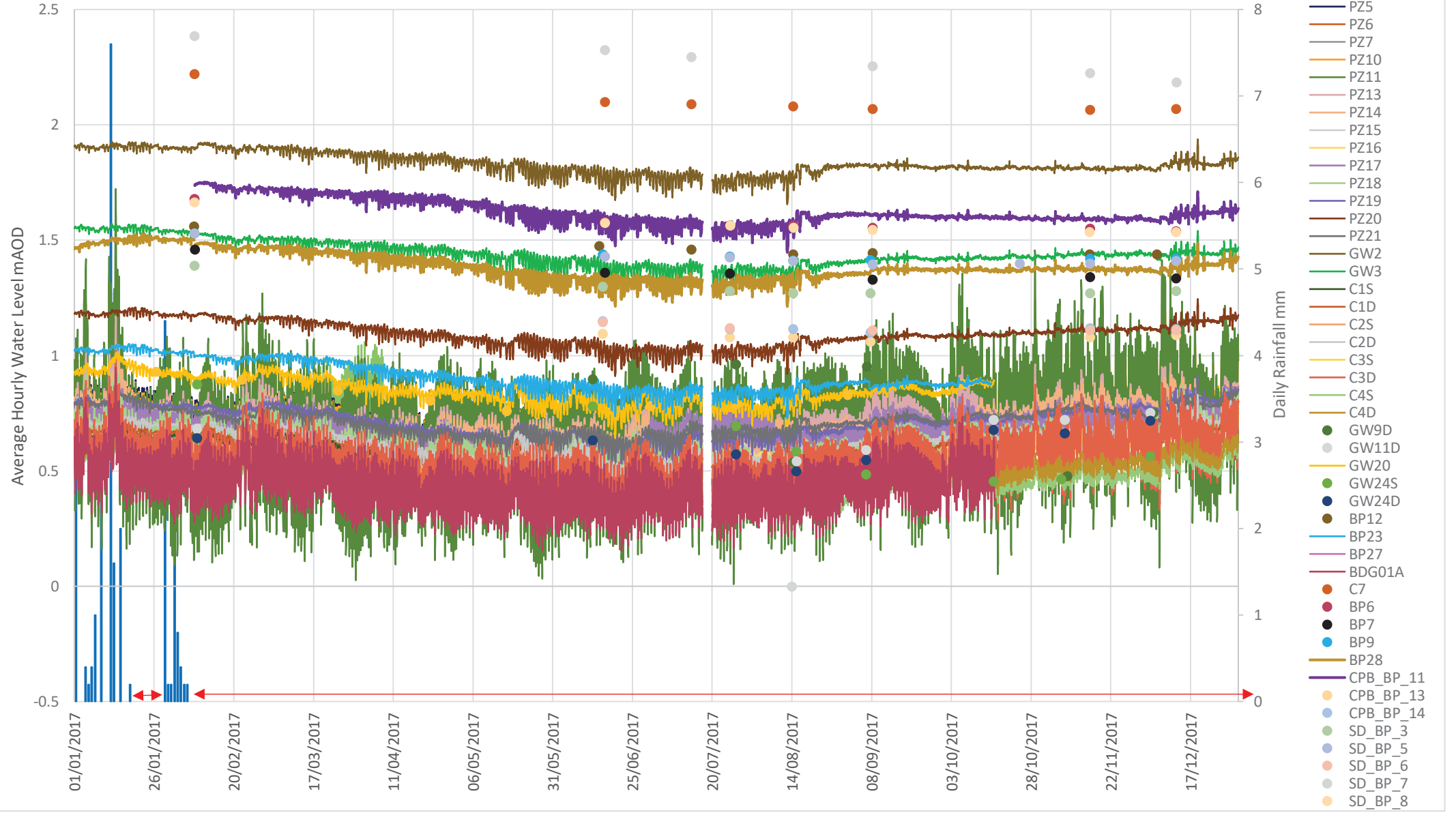




Chart 2D: Groundwater Levels in Crag Deposits, 2018

↔ No Rainfall Data

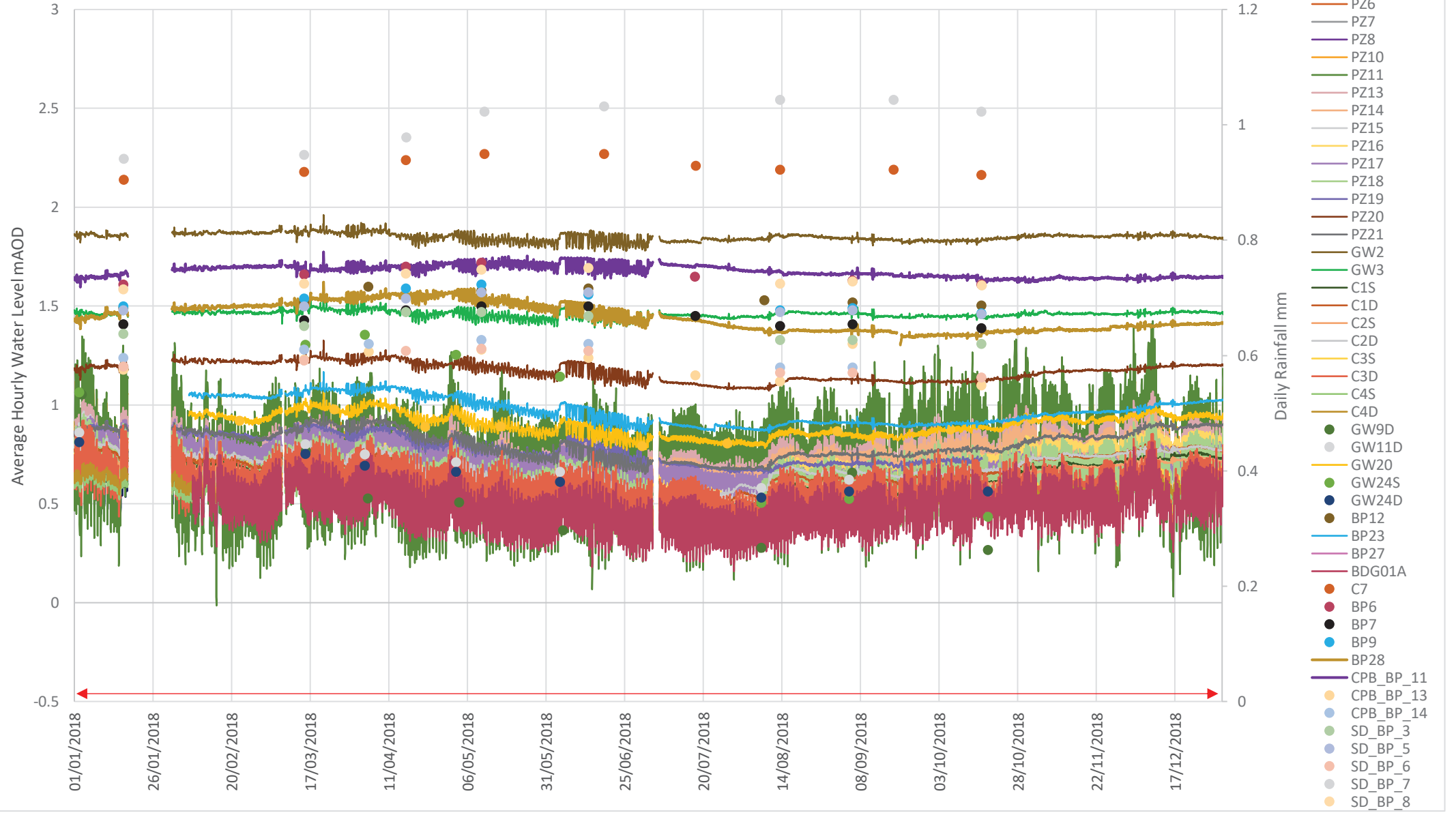


Chart 2E: Groundwater Levels in Crag Deposits, 2019

↔ No Rainfall Data

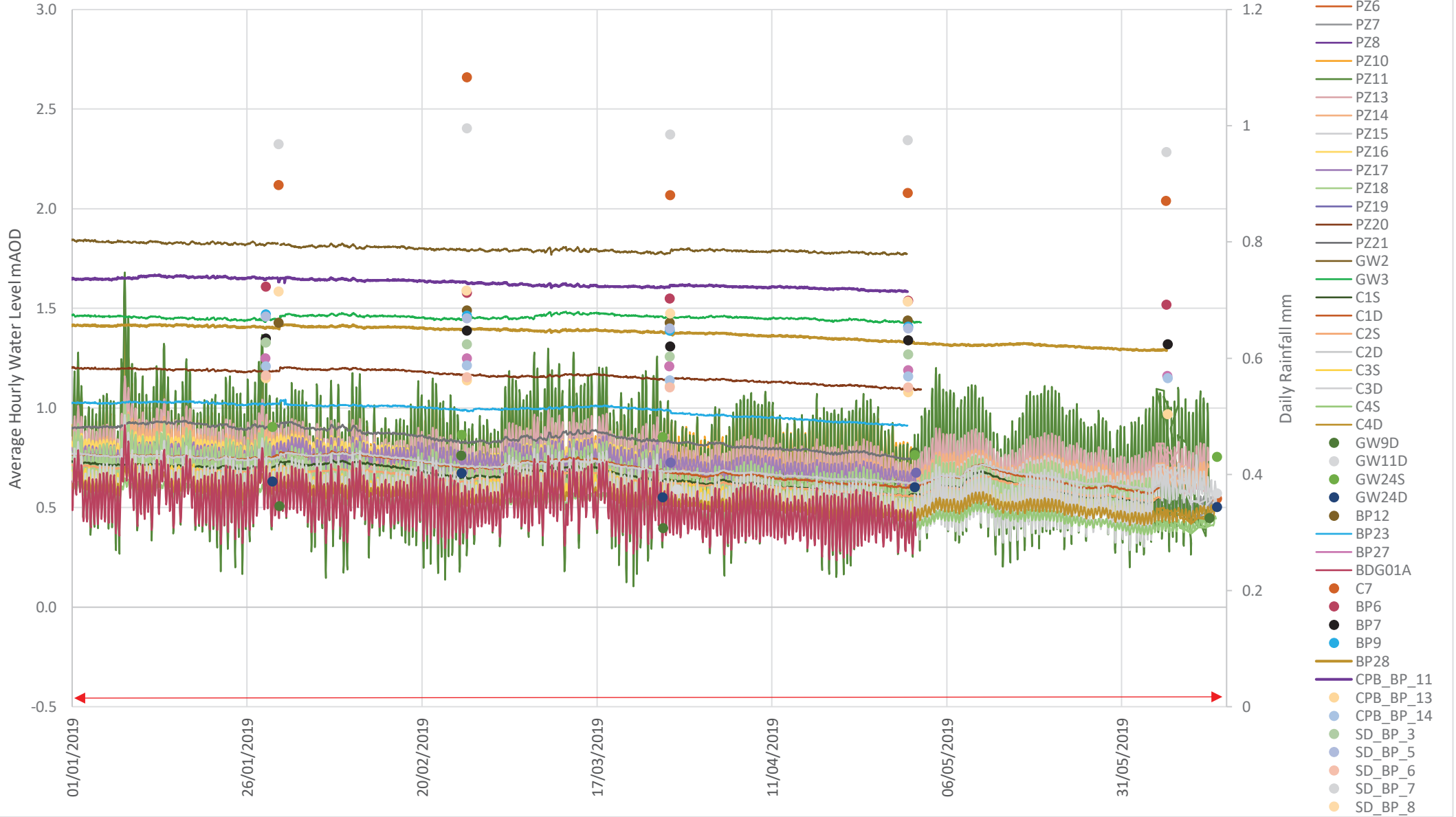
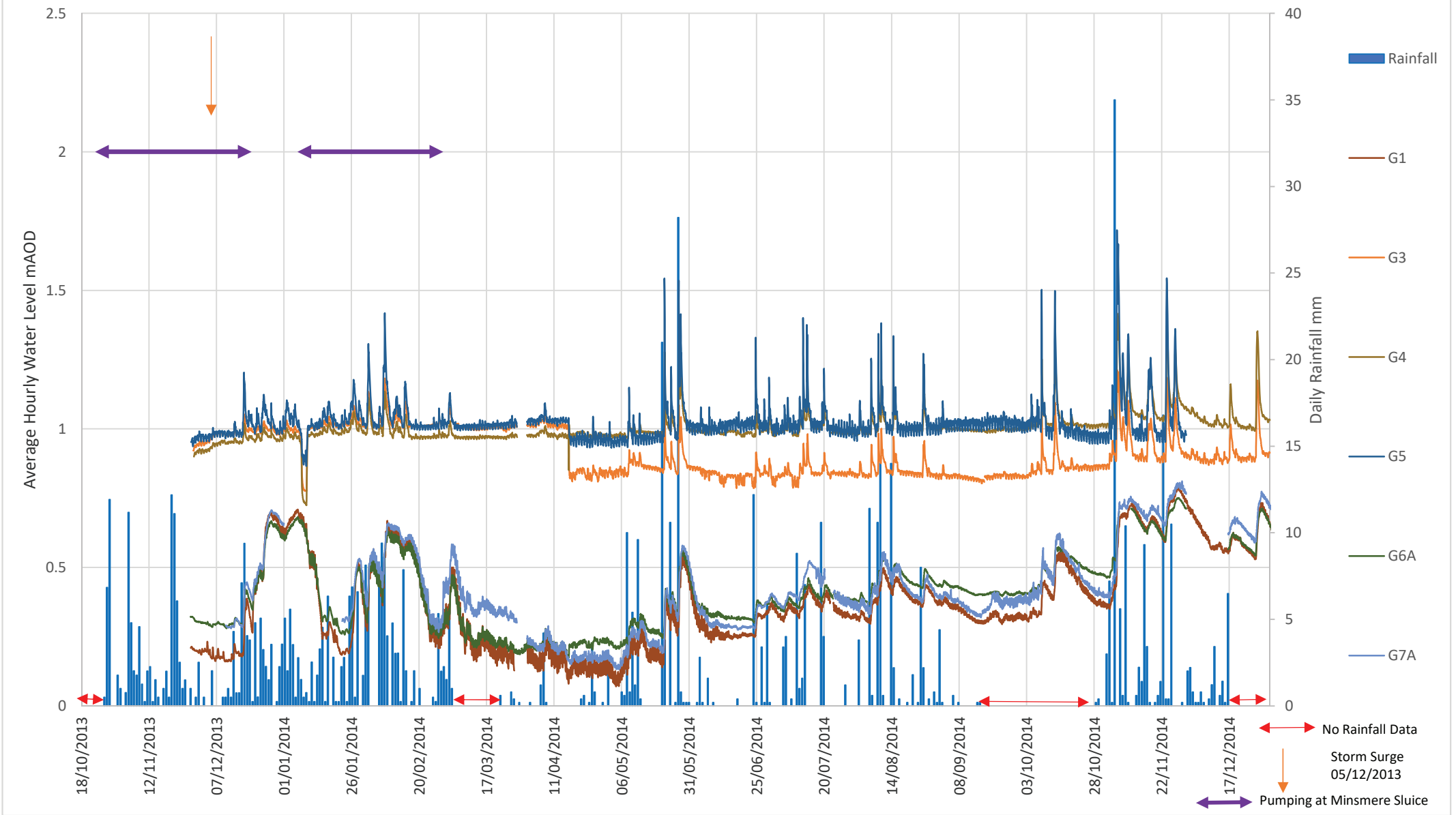


Chart 3: Surface Water Levels, November 2013 to December 2014



This Chart supersedes Chart 3 in the 2015 CSM Report

Chart 3A: Surface Water Levels, 2015

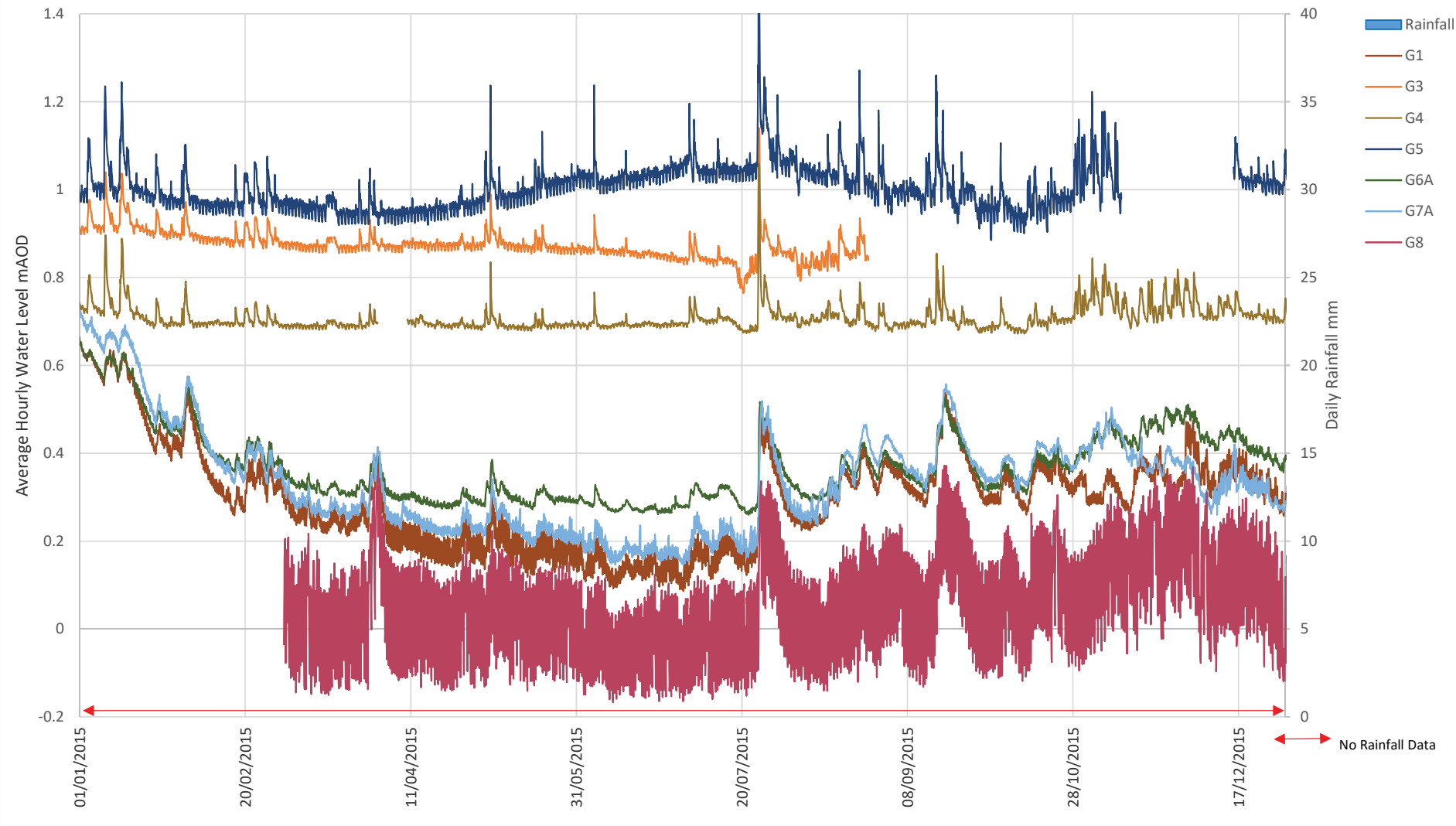


Chart 3B: Surface Water Levels, 2016

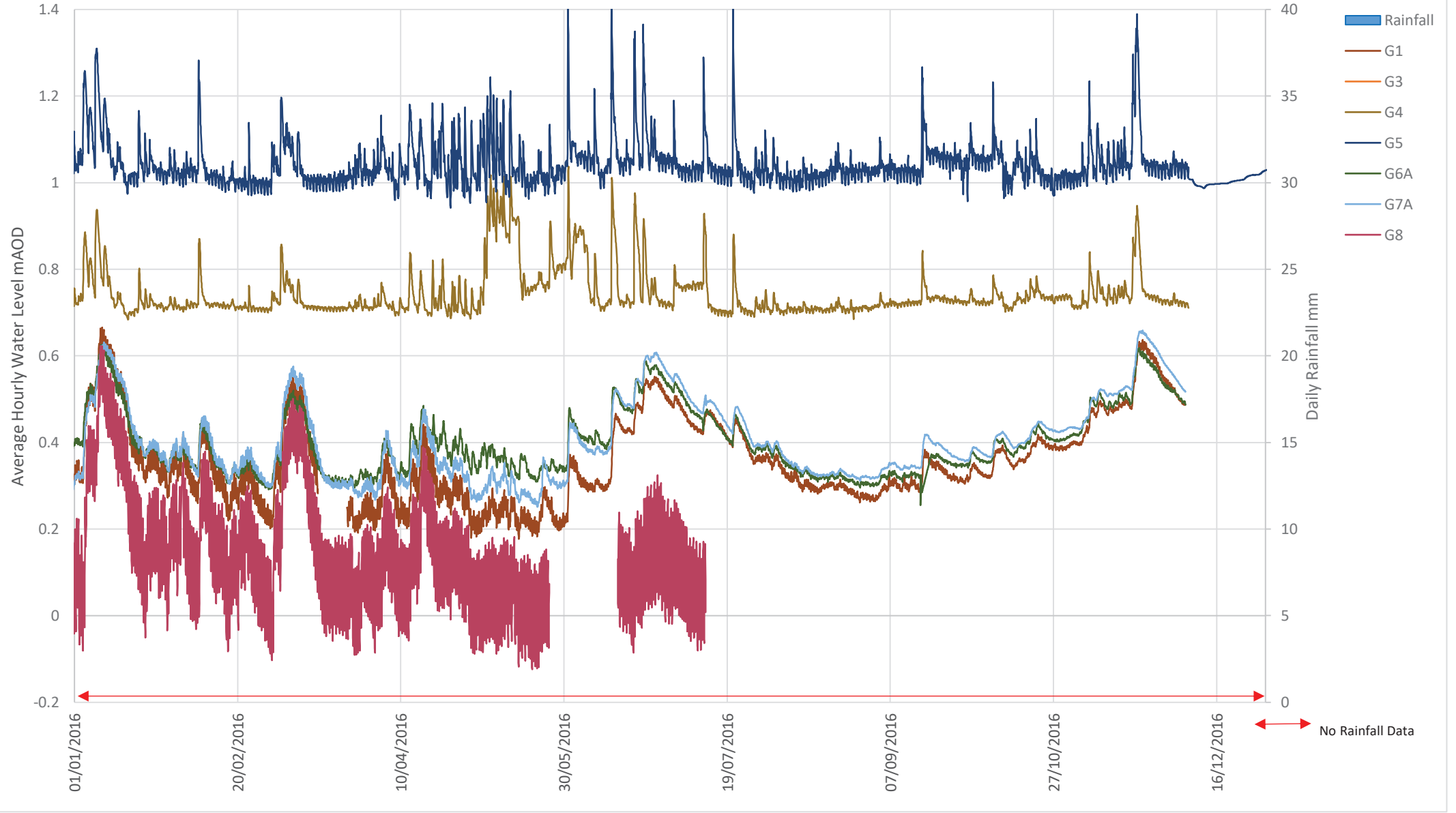


Chart 3C: Surface Water Levels, 2017

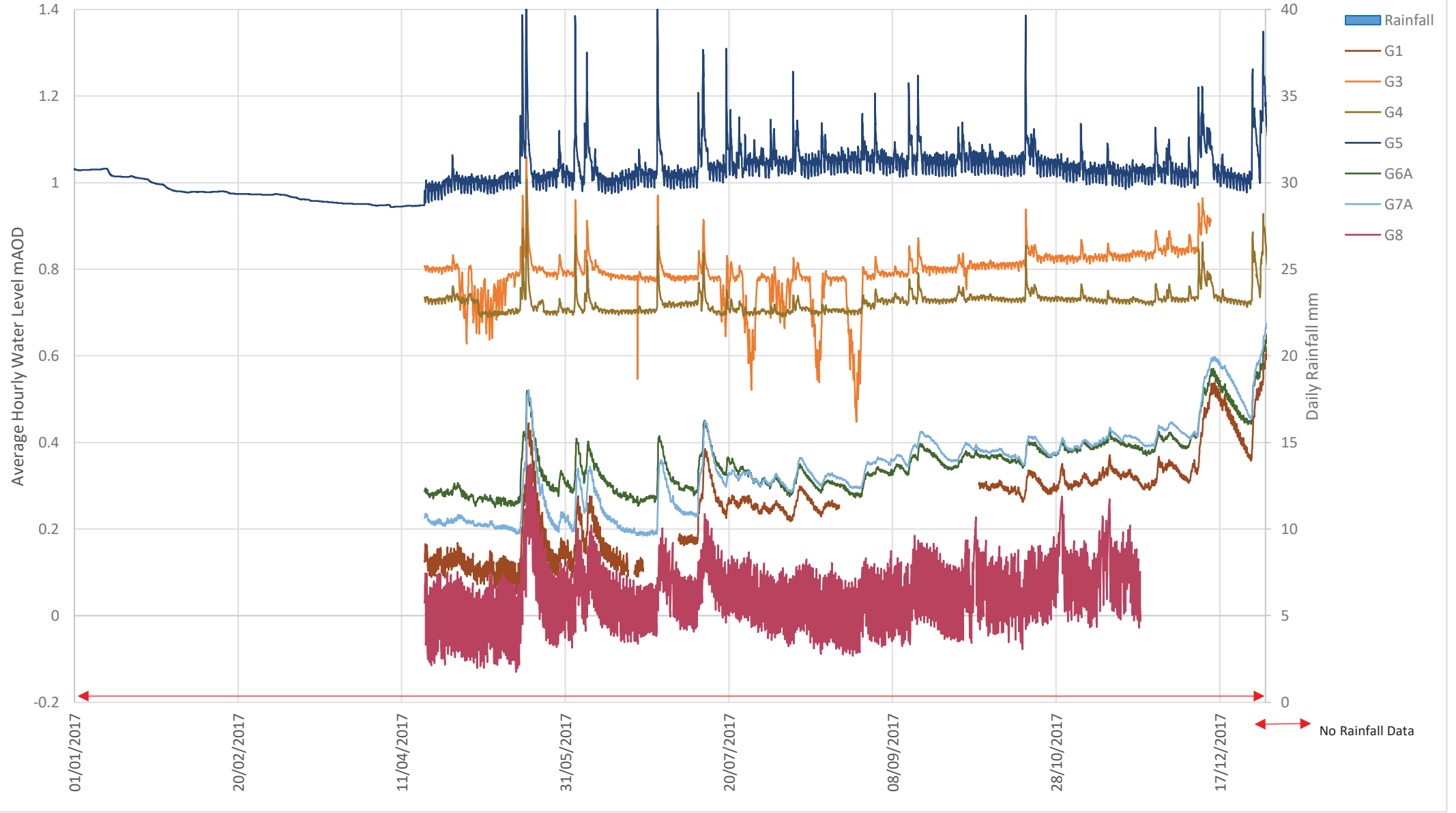


Chart 3D: Surface Water Levels, 2018

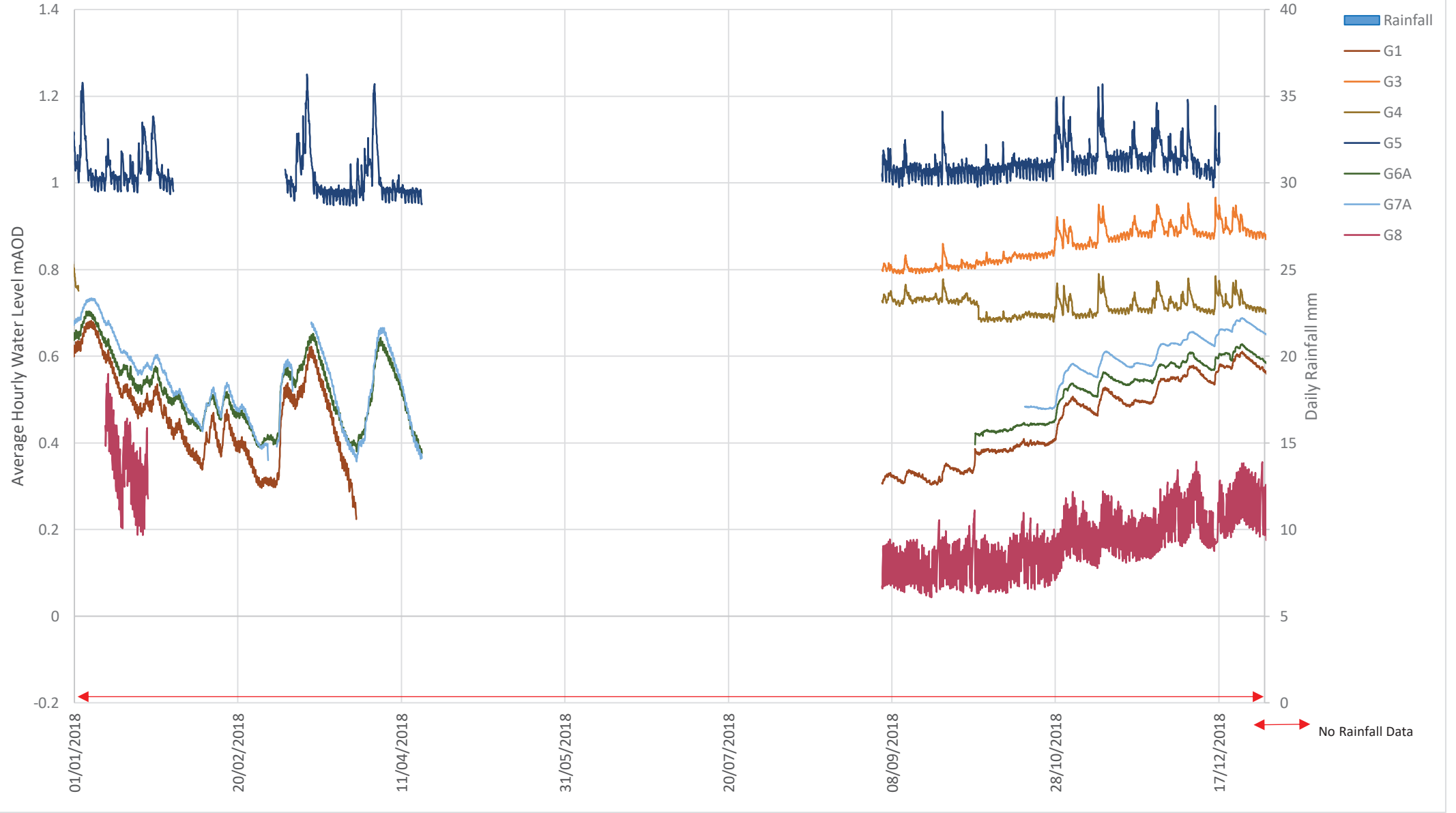


Chart 3E: Surface Water Levels, 2019

