



The Sizewell C Project

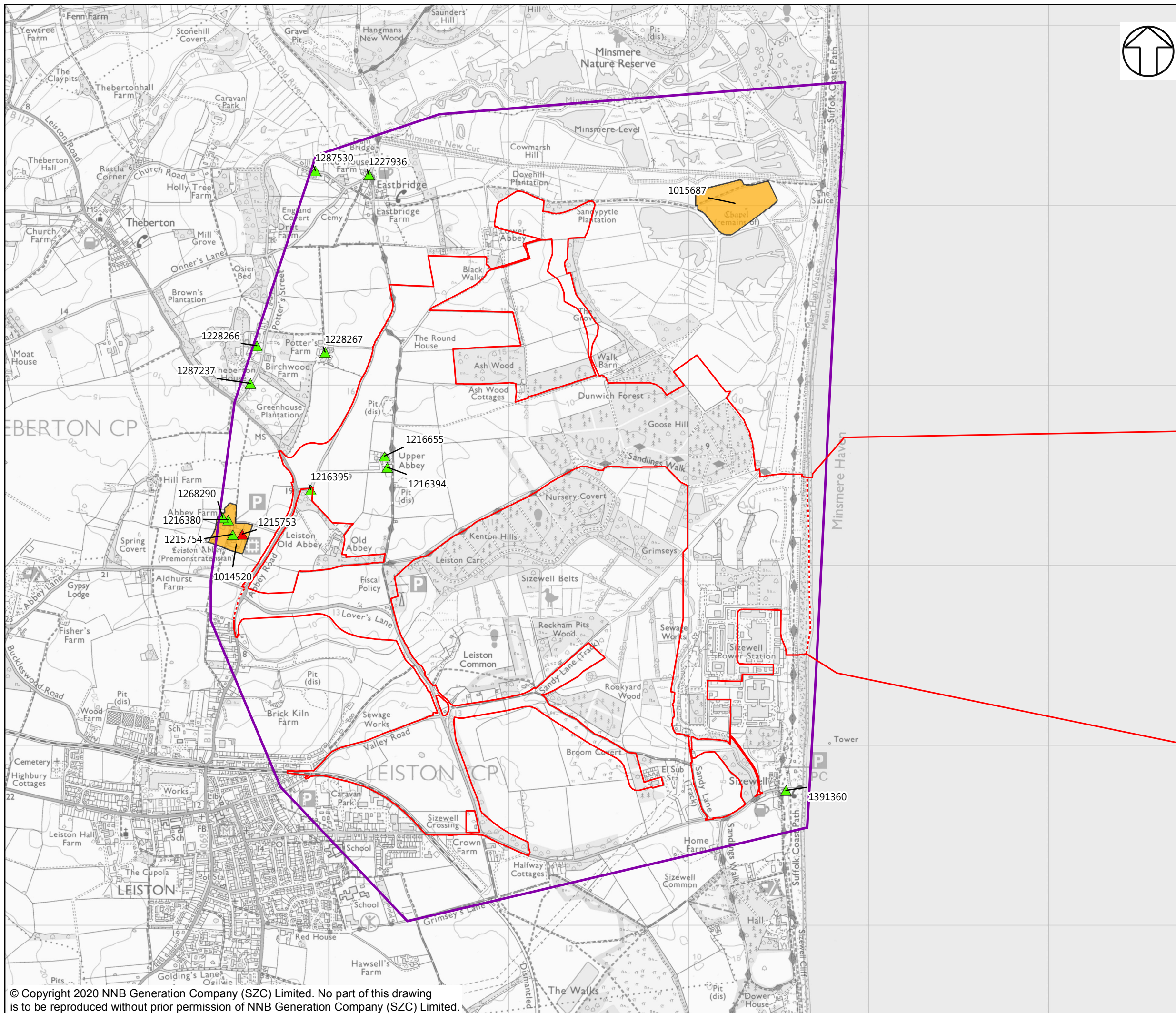
6.3 Volume 2 Main Development Site Chapter 16 Terrestrial Historic Environment Figures 16.1 - 16.6

Revision: 1.0
Applicable Regulation: Regulation 5(2)(a)
PINS Reference Number: EN010012

May 2020

Planning Act 2008
Infrastructure Planning (Applications: Prescribed
Forms and Procedure) Regulations 2009





NOTES
SEE GAZETTEER (APPENDIX 16A) FOR DESIGNATED ASSET NUMBERS AND DESCRIPTIONS

KEY

- SIZEWELL C MAIN DEVELOPMENT SITE BOUNDARY
- - - DEMARCATION LINE
- SCCAS STUDY AREA
- SCHEDULED MONUMENT
- ▲ GRADE I LISTED BUILDING
- ▲ GRADE II LISTED BUILDING

NOT PROTECTIVELY MARKED

COPYRIGHT
Reproduced from Ordnance Survey map with the permission of Ordnance Survey on behalf of the controller of Her Majesty's Stationery Office © Crown Copyright (2019). All Rights reserved. NNB GenCo 0100060408.
The Historic England GIS Data contained in this material was obtained in January 2019. The most publicly available up to date Historic England GIS Data can be obtained from <http://www.historicengland.org.uk> © Historic England 2019.

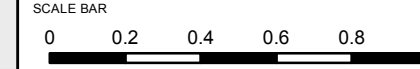


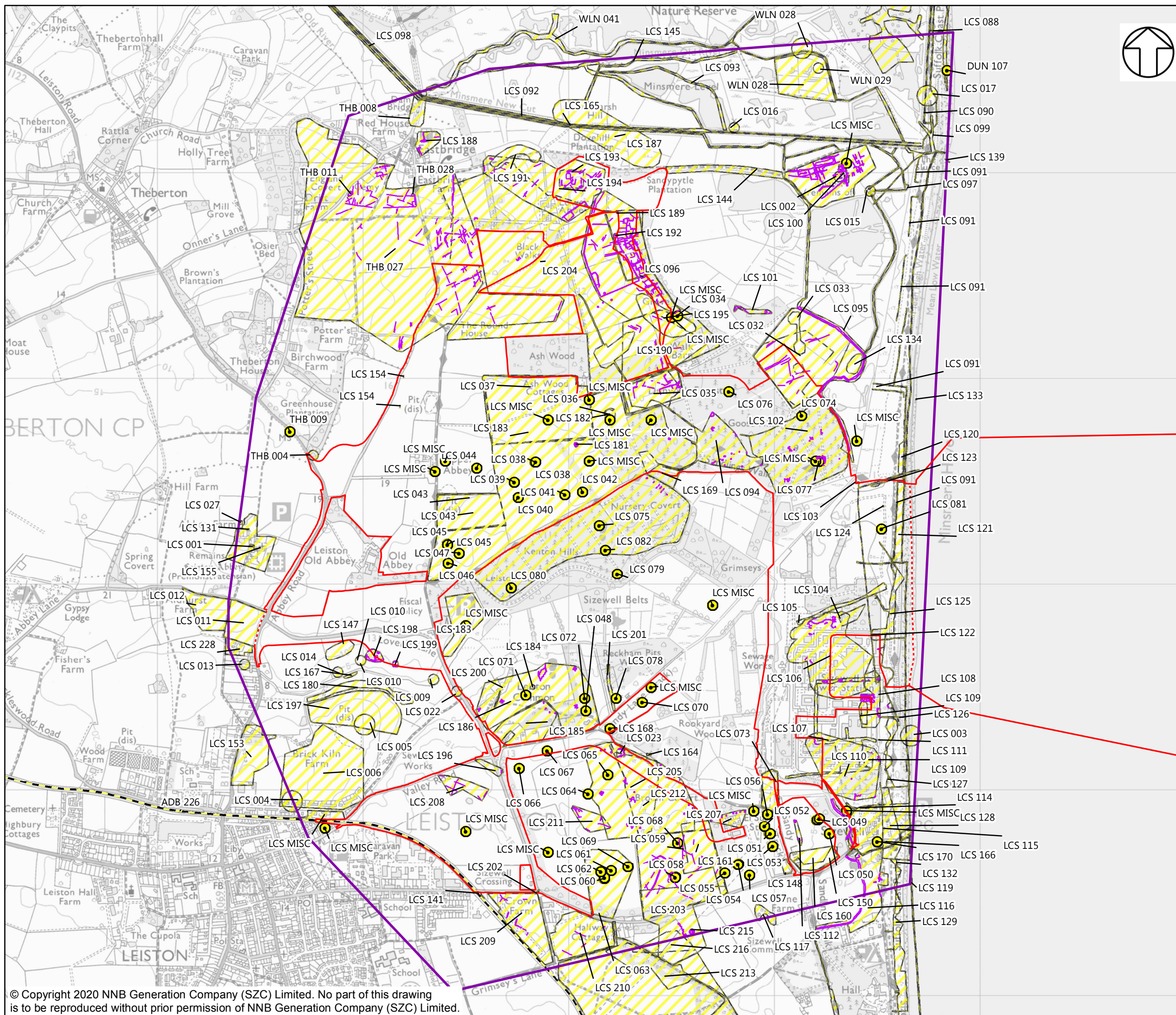
DOCUMENT:
SIZEWELL C
ENVIRONMENTAL STATEMENT
VOLUME 2
CHAPTER 16
TERRESTRIAL HISTORIC ENVIRONMENT

DRAWING TITLE:
DESIGNATED HERITAGE ASSETS

DRAWING NO.:
FIGURE 16.1

DATE: JAN 2020 **DRAWN:** V.P. **SCALE:** 1:20,000 @A3





NOTES

SEE GAZETTEER (APPENDIX 16A) FOR HER RECORD NUMBERS AND DESCRIPTIONS

KEY

- SIZEWELL C MAIN DEVELOPMENT SITE BOUNDARY
- - - DEMARCATION LINE
- SCCAS STUDY AREA
- HER MONUMENT RECORD
- HER MONUMENT RECORD
- NMP DATA

NOT PROTECTIVELY MARKED

COPYRIGHT

Reproduced from Ordnance Survey map with the permission of Ordnance Survey on behalf of the controller of Her Majesty's Stationery Office © Crown Copyright (2019). All Rights reserved. NNB GenCo 0100060408. The Suffolk County Council Historic Environment Record Data contained in this material was obtained on 09/05/2018. © Suffolk County Council 2018.

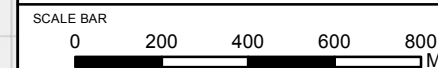


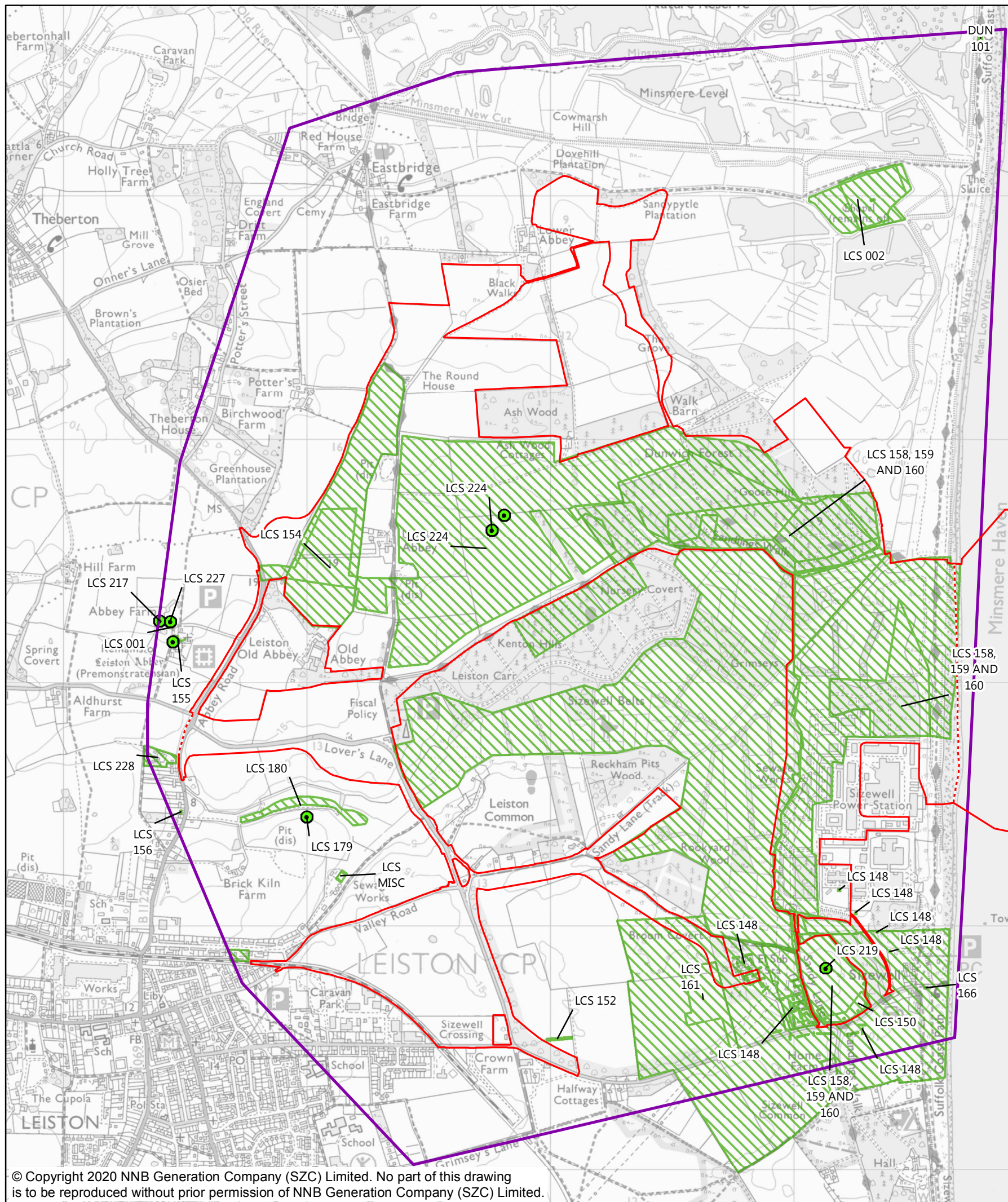
DOCUMENT:
 SIZEWELL C
 ENVIRONMENTAL STATEMENT
 VOLUME 2
 CHAPTER 9
 TERRESTRIAL HISTORIC ENVIRONMENT

DRAWING TITLE:
 NON-DESIGNATED HERITAGE RECORDS

DRAWING NO:
 FIGURE 16.2

DATE: JAN 2020 DRAWN: V.P. SCALE: 1:17,500 @A3





NOTES
SEE GAZETTEER (APPENDIX 16A) FOR HER RECORD NUMBERS AND DESCRIPTIONS

- KEY**
- SIZEWELL C MAIN DEVELOPMENT SITE BOUNDARY
 - DEMARCATION LINE
 - SCCAS STUDY AREA
 - HER EVENTS RECORD
 - HER EVENTS RECORD

NOT PROTECTIVELY MARKED

COPYRIGHT
Reproduced from Ordnance Survey map with the permission of Ordnance Survey on behalf of the controller of Her Majesty's Stationery Office © Crown Copyright (2019). All Rights reserved. NNB GenCo 0100060408.
The Suffolk County Council Historic Environment Record Data contained in this material was obtained on 09/05/2019. ©Suffolk County Council 2018.



DOCUMENT:
SIZEWELL C ENVIRONMENTAL STATEMENT VOLUME 2 CHAPTER 16 TERRESTRIAL HISTORIC ENVIRONMENT

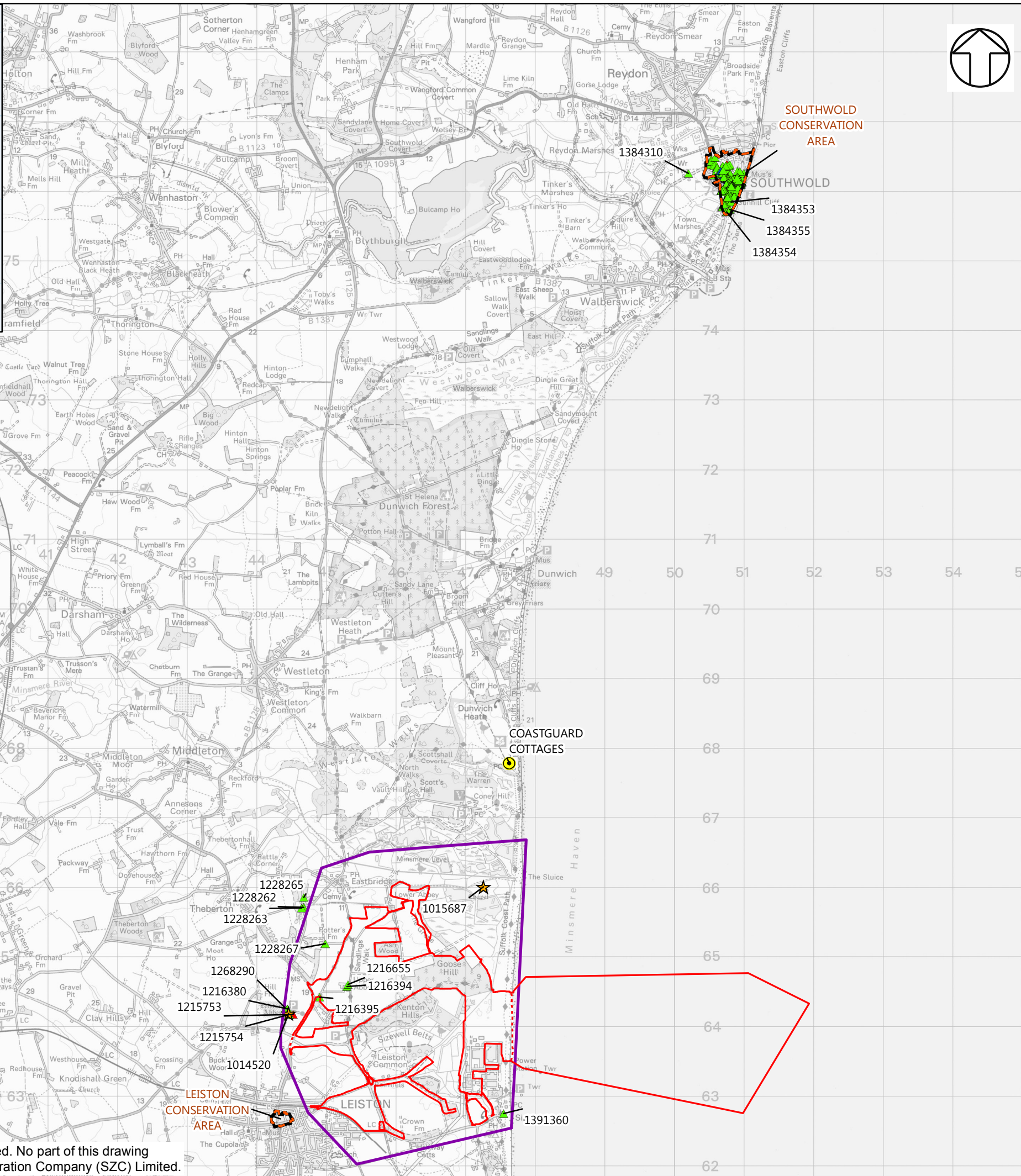
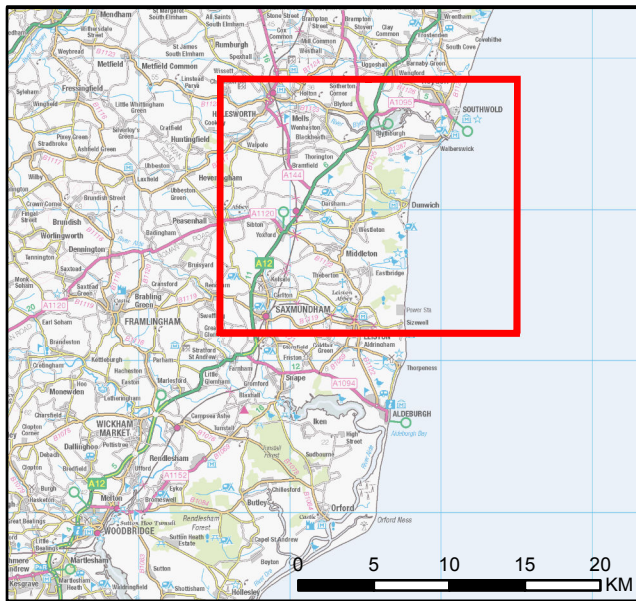
DRAWING TITLE:
PREVIOUS ARCHAEOLOGICAL EVENT RECORDS (HER)

DRAWING NO:
FIGURE 16.3

DATE: JAN 2020 **DRAWN:** V.P. **SCALE:** 1:17,500 @A3



© Copyright 2020 NNB Generation Company (SZC) Limited. No part of this drawing is to be reproduced without prior permission of NNB Generation Company (SZC) Limited.



- NOTES**
SEE GAZETTEER (APPENDIX 16A) FOR HERITAGE ASSET NUMBERS AND DESCRIPTIONS
- KEY**
- SIZEWELL C MAIN DEVELOPMENT SITE BOUNDARY
 - DEMARCATION LINE
 - SCCAS STUDY AREA
 - ★ SCHEDULED MONUMENT
 - CONSERVATION AREA
 - ▲ GRADE I LISTED BUILDING
 - ▲ GRADE II* LISTED BUILDING
 - ▲ GRADE II LISTED BUILDING
 - NON-DESIGNATED HERITAGE ASSET

NOT PROTECTIVELY MARKED

COPYRIGHT
Reproduced from Ordnance Survey map with the permission of Ordnance Survey on behalf of the controller of Her Majesty's Stationery Office © Crown Copyright (2019). All Rights reserved. NNB GenCo 0100060408.
The Historic England GIS Data contained in this material was obtained in January 2019. The most publicly available up to date Historic England GIS Data can be obtained from <http://www.historicengland.org.uk> © Historic England 2018. The Conservation Area boundaries were digitised from East Suffolk Conservation Area Appraisals in January 2019.

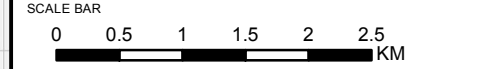


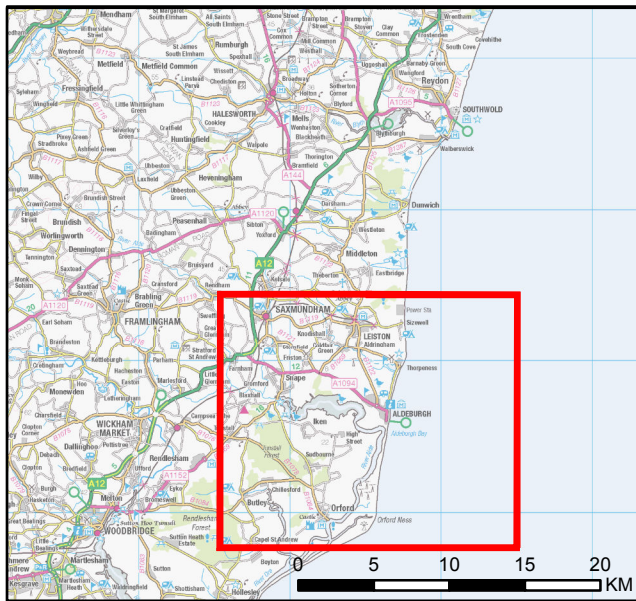
DOCUMENT:
SIZEWELL C
ENVIRONMENTAL STATEMENT
VOLUME 2
CHAPTER 16
TERRESTRIAL HISTORIC ENVIRONMENT

DRAWING TITLE:
HERITAGE ASSETS IN MAIN DEVELOPMENT SITE SETTINGS ASSESSMENT - NORTH

DRAWING NO:
FIGURE 16.4A

DATE: JAN 2020 **DRAWN:** V.P. **SCALE:** 1:60,000 @A3





- NOTES**
SEE GAZETTEER (APPENDIX 16A) FOR HERITAGE ASSET NUMBERS AND DESCRIPTIONS
- KEY**
- SIZEWELL C MAIN DEVELOPMENT SITE BOUNDARY
 - DEMARCATION LINE
 - SCCAS STUDY AREA
 - ★ SCHEDULED MONUMENT
 - CONSERVATION AREA
 - ▲ GRADE I LISTED BUILDING
 - ▲ GRADE II* LISTED BUILDING
 - ▲ GRADE II LISTED BUILDING
 - NON-DESIGNATED HERITAGE ASSET

NOT PROTECTIVELY MARKED

COPYRIGHT
Reproduced from Ordnance Survey map with the permission of Ordnance Survey on behalf of the controller of Her Majesty's Stationary Office © Crown Copyright (2019). All Rights reserved. NNB GenCo 0100060408.
The Historic England GIS Data contained in this material was obtained in January 2019. The most publicly available up to date Historic England GIS Data can be obtained from <http://www.historicengland.org.uk> © Historic England 2018. The Conservation Area boundaries were digitised from East Suffolk Conservation Area Appraisals in January 2019.

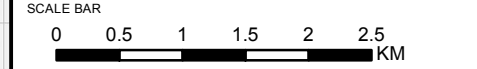


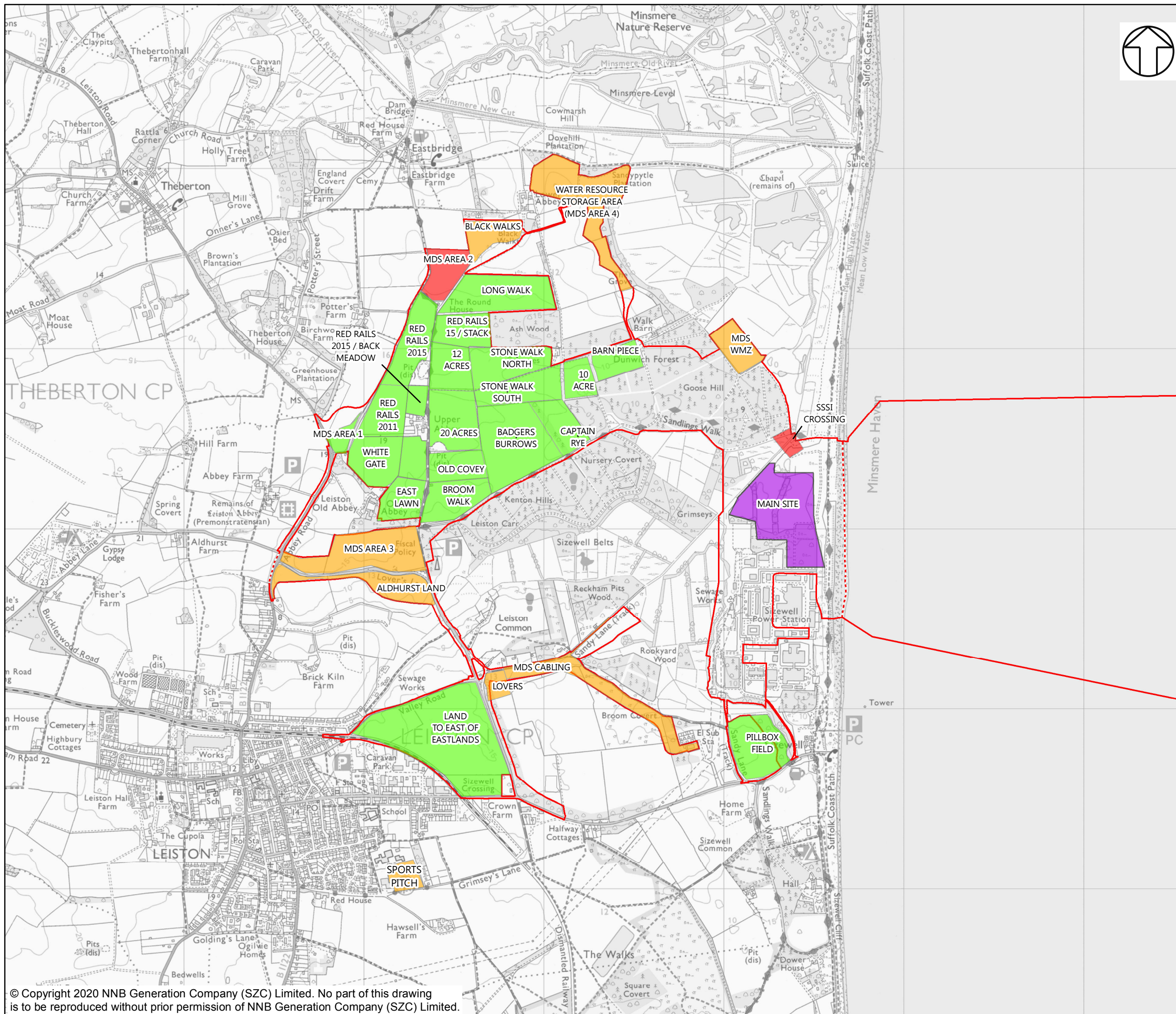
DOCUMENT:
SIZEWELL C
ENVIRONMENTAL STATEMENT
VOLUME 2
CHAPTER 16
TERRESTRIAL HISTORIC ENVIRONMENT

DRAWING TITLE:
HERITAGE ASSETS IN MAIN DEVELOPMENT SITE SETTINGS ASSESSMENT - SOUTH

DRAWING NO:
FIGURE 16.4B

DATE: JAN 2020 **DRAWN:** V.P. **SCALE:** 1:60,000 @A3





- NOTES**
- KEY**
- SIZEWELL C MAIN DEVELOPMENT SITE BOUNDARY
 - DEMARCATION LINE
 - EVALUATION TRENCHING
 - GEOPHYSICAL SURVEY
 - RESISTIVITY/GEOARCHAEOLOGICAL SURVEY
 - NO LAND ACCESS

NOT PROTECTIVELY MARKED

COPYRIGHT
 Reproduced from Ordnance Survey map with the permission of Ordnance Survey on behalf of the controller of Her Majesty's Stationary Office © Crown Copyright (2019). All Rights reserved. NNB GenCo 0100060408.

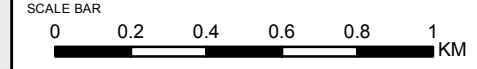


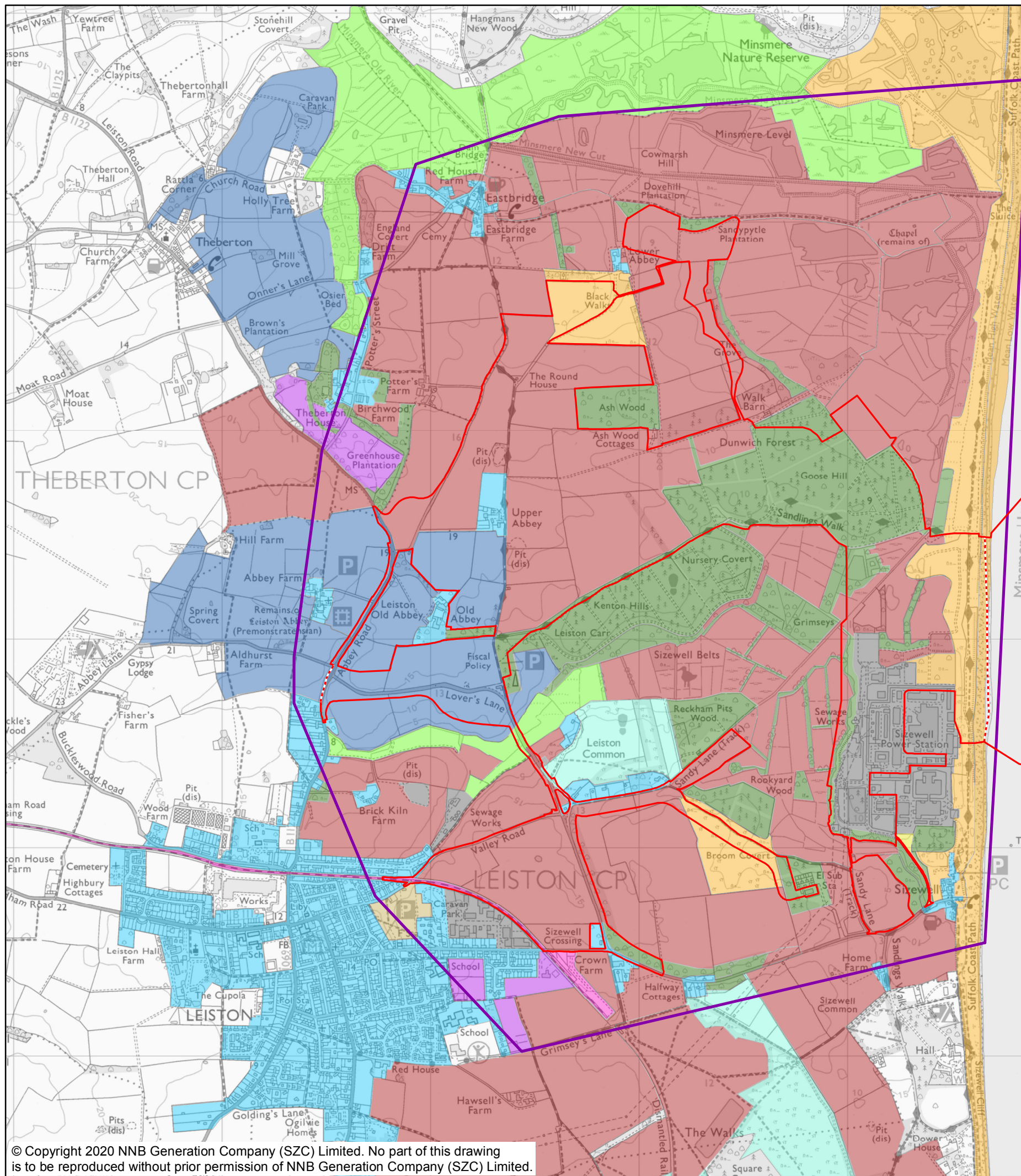
DOCUMENT:
 SIZEWELL C
 ENVIRONMENTAL STATEMENT
 VOLUME 2
 CHAPTER 16
 TERRESTRIAL HISTORIC ENVIRONMENT

DRAWING TITLE:
 FIELD NAMES AND ARCHAEOLOGICAL
 FIELDWORK TO DATE (JAN 2020)

DRAWING NO:
 FIGURE 16.5

DATE: JAN 2020 **DRAWN:** V.P. **SCALE:** 1:20,000 @A3





NOTES

KEY

- SIZEWELL C MAIN DEVELOPMENT SITE BOUNDARY
- DEMARCATION LINE
- SCCAS STUDY AREA
- HISTORIC LANDSCAPE CHARACTER**
- 18TH-CENTURY AND LATER ENCLOSURE
- BUILT UP AREA
- COMMON PASTURE
- COMMUNICATIONS
- HORTICULTURE
- INDUSTRIAL
- MEADOW OR MANAGED WETLAND
- POST-1950 AGRICULTURAL LANDSCAPE
- POST-MEDIEVAL PARK AND LEISURE
- PRE-18TH-CENTURY ENCLOSURE
- UNIMPROVED LAND
- WOODLAND

NOT PROTECTIVELY MARKED

COPYRIGHT
 Reproduced from Ordnance Survey map with the permission of Ordnance Survey on behalf of the controller of Her Majesty's Stationary Office © Crown Copyright (2019). All Rights reserved. NNB GenCo 0100060408.
 The Historic Landscape GIS Data contained within this material was obtained on 09/05/2018. © Suffolk County Council 2018.



DOCUMENT:
 SIZEWELL C ENVIRONMENTAL STATEMENT
 VOLUME 2
 CHAPTER 16
 TERRESTRIAL HISTORIC ENVIRONMENT

DRAWING TITLE:
 HISTORIC LANDSCAPE CHARACTER

DRAWING NO:
 FIGURE 16.6

DATE: JAN 2020 **DRAWN:** V.P. **SCALE:** 1:20,000 @A3

