



The Sizewell C Project

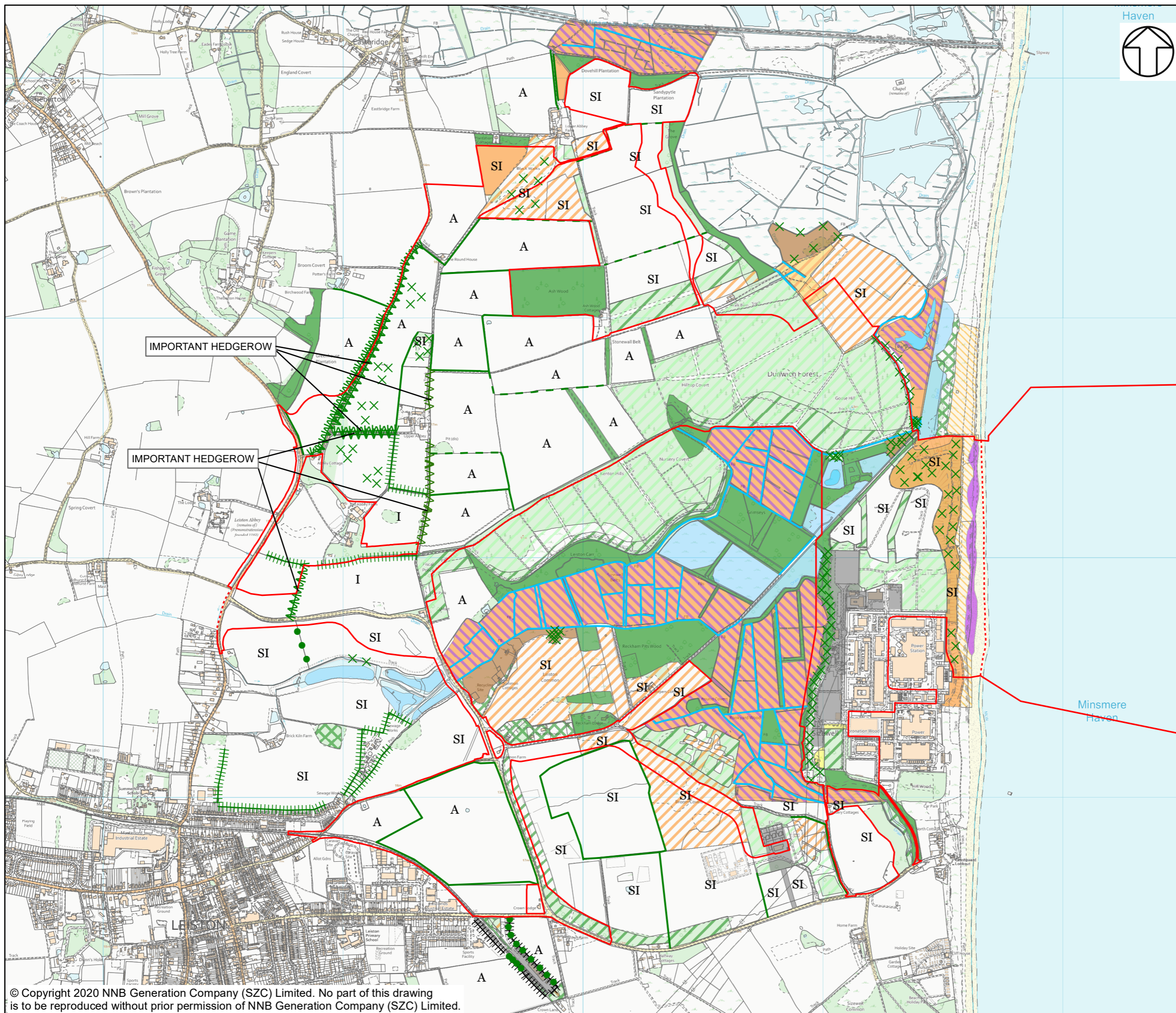
6.3 Volume 2 Main Development Site Chapter 14 Terrestrial Ecology and Ornithology Appendix 14A3 - Plants and Habitats Annex 14A3.1: Figures 14A3.1 - 14A3.2

Revision: 1.0
Applicable Regulation: Regulation 5(2)(a)
PINS Reference Number: EN010012

May 2020

Planning Act 2008
Infrastructure Planning (Applications: Prescribed
Forms and Procedure) Regulations 2009





NOTES

KEY

- SIZEWELL C MAIN DEVELOPMENT SITE BOUNDARY
- - - DEMARCATION LINE
- X SCATTERED SCRUB
- SCATTERED BROADLEAVED TREES
- - - DEFUNCT HEDGE - SPECIES-POOR
- ||||| FENCE
- ||||| HEDGE WITH TREES - SPECIES-POOR
- ||||| INTACT HEDGE - NATIVE SPECIES-RICH
- ||||| INTACT HEDGE - SPECIES-POOR
- ||||| HEDGE WITH TREES - NATIVE SPECIES-RICH
- RUNNING WATER
- HARDSTANDING
- BROADLEAVED WOODLAND - SEMI-NATURAL
- BROADLEAVED WOODLAND - PLANTATION
- CONIFEROUS WOODLAND - PLANTATION
- MIXED WOODLAND - PLANTATION
- SCRUB - DENSE/CONTINUOUS
- ACID GRASSLAND - SEMI-IMPROVED
- SEMI-IMPROVED NEUTRAL GRASSLAND
- IMPROVED GRASSLAND
- MARSH/MARSHY GRASSLAND
- POOR SEMI-IMPROVED GRASSLAND
- BRACKEN - CONTINUOUS
- OTHER TALL HERB AND FERN RUDERAL
- DRY HEATH/ACID GRASSLAND
- SWAMP
- STANDING WATER
- DUNE GRASSLAND
- QUARRY
- A CULTIVATED/DISTURBED LAND - ARABLE
- A CULTIVATED/DISTURBED LAND - AMENITY GRASSLAND
- VEGETATED SHINGLE

NOT PROTECTIVELY MARKED

COPYRIGHT
 Reproduced from Ordnance Survey map with the permission of Ordnance Survey on behalf of the controller of Her Majesty's Stationary Office © Crown Copyright (2019). All Rights reserved. NNB GenCo 0100060408.

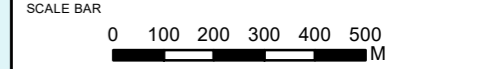


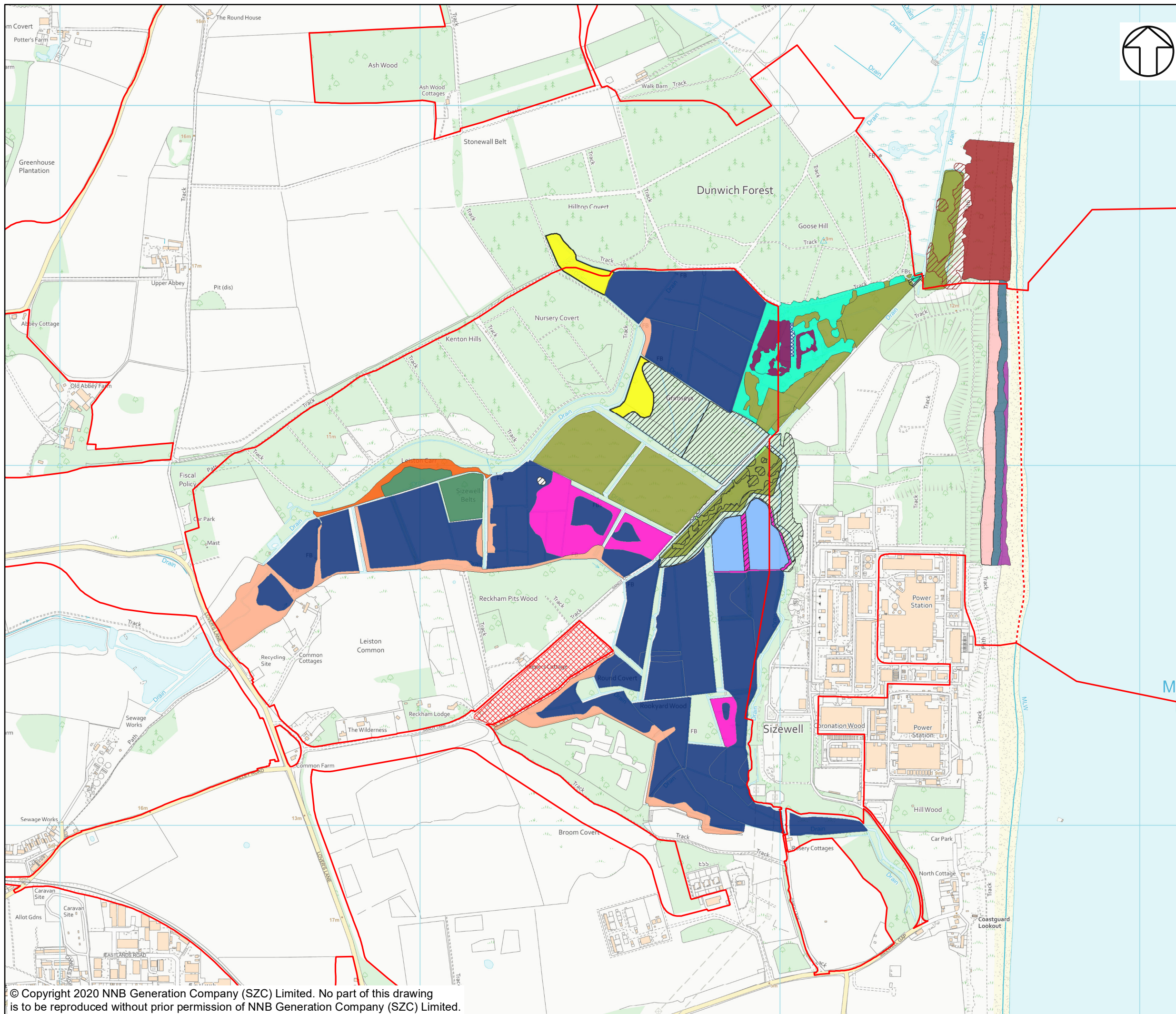
DOCUMENT:
 SIZEWELL C
 ENVIRONMENTAL STATEMENT
 VOLUME 2
 APPENDIX 14A3
 PLANTS AND HABITATS

DRAWING TITLE:
 PHASE 1 HABITAT PLAN

DRAWING NO:
 FIGURE 14A3.1

DATE: JAN 2020 DRAWN: R.G. SCALE: 1:15,000 @A3





NOTES

KEY

— SIZEWELL C MAIN DEVELOPMENT SITE BOUNDARY

- - - DEMARCATION LINE

NATIONAL VEGETATION

- M22 - JUNCUS SUBNODULOSUS-CIRSIIUM PALUSTRE FEN-MEADOW
- M22B - JUNCUS SUBNODULOSUS-CIRSIIUM PALUSTRE FEN-MEADOW, TYPICAL SUB-COMMUNITY
- M22D - JUNCUS SUBNODULOSUS-CIRSIIUM PALUSTRE FEN-MEADOW, IRIS PSEUDACORUS SUB-COMMUNITY
- MG10A - HOLCUS LANATUS-JUNCUS EFFUSUS RUSH-PASTURE, TYPICAL SUB-COMMUNITY
- OV25 - URTICA DIOICA-CIRSIIUM ARVENSE
- S26 - PHRAGMITES AUSTRALIS-URTICA DIOICA TALL-HERB FEN
- S4 - PHRAGMITES AUSTRALIS SWAMP AND REED-
- S4A - PHRAGMITES AUSTRALIS-PEUCEDANUM PALUSTRIS TALL-HERB FEN, CAREX PANICULATA SUB-COMMUNITY
- SD12 - CAREX ARENARIA-FESTUCA OVINA-AGROSTIS CAPILLARIS DUNE GRASSLAND
- SD1A - RUMEX CRISPUS-GLAUCIUM FLAVUM SHINGLE COMMUNITY, TYPICAL SUB-COMMUNITY
- SD7 - AMMOPHILA ARENARIA-FESTUCA RUBRA SEMI-FIXED DUNE COMMUNITY
- SD8 - FESTUCA RUBRA-GALIUM VERUM FIXED DUNE GRASSLAND
- SCRUB
- U1D - FESTUCA OVINA-AGROSTIS CAPILLARIS-RUMEX ACETOSELLA GRASSLAND, ANTHOXANTHUM ODORATUM-LOTUS CORNICULATUS SUB-COMMUNITY
- W10D - QUERCUS ROBUR-PTERIDIUM AQUILINUM-RUBUS FRUTICOSUS WOODLAND, HOLCUS LANATUS SUB-COMMUNITY
- W2A - SALIX CINEREA-BETULA PUBESCENS-PHRAGMITES AUSTRALIS WOODLAND
- W5 - ALNUS GLUTINOSA-CAREX PANICULATA
- W5A - ALNUS GLUTINOSA-CAREX PANICULATA WOODLAND, PHRAGMITES AUSTRALIS SUB-COMMUNITY
- W6A - ALNUS GLUTINOSA-URTICA DIOICA WOODLAND, TYPICAL SUB-COMMUNITY

NOT PROTECTIVELY MARKED

COPYRIGHT
 Reproduced from Ordnance Survey map with the permission of Ordnance Survey on behalf of the controller of Her Majesty's Stationery Office © Crown Copyright (2019). All Rights reserved. NNB GenCo 0100060408.



DOCUMENT:
 SIZEWELL C
 ENVIRONMENTAL STATEMENT
 VOLUME 2
 APPENDIX 14A3
 PLANTS AND HABITATS

DRAWING TITLE:
 DISTRIBUTION OF VEGETATION COMMUNITIES
 WITHIN SIZEWELL MARSHES SSSI FROM
 NVC SURVEY

DRAWING NO:
 FIGURE 14A3.2

DATE: JAN 2020 **DRAWN:** R.G. **SCALE:** 1:10,000 @A3

